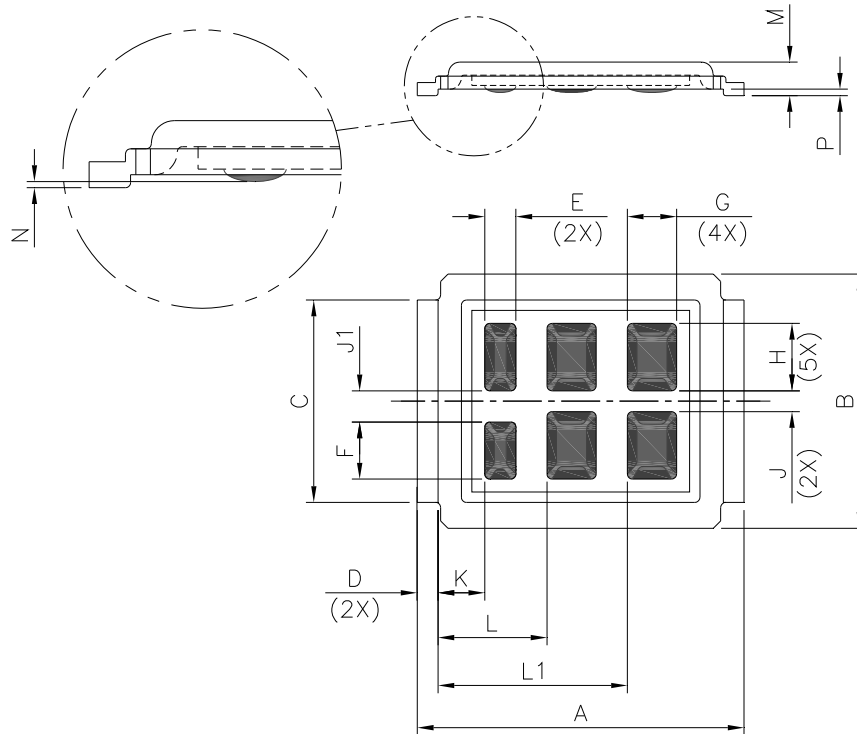


DirectFET® Outline Dimension, ME Outline (Medium Size Can, E-Designation)

Please see DirectFET application note AN-1035 for all details regarding the assembly of DirectFET. This includes all recommendations for stencil and substrate designs.



| CODE | METRIC | | IMPERIAL | |
|------|--------|------|----------|-------|
| | MIN | MAX | MIN | MAX |
| A | 6.25 | 6.35 | 0.246 | 0.250 |
| B | 4.80 | 5.05 | 0.189 | 0.199 |
| C | 3.85 | 3.95 | 0.152 | 0.156 |
| D | 0.35 | 0.45 | 0.014 | 0.018 |
| E | 0.58 | 0.62 | 0.023 | 0.024 |
| F | 1.08 | 1.12 | 0.043 | 0.044 |
| G | 0.93 | 0.97 | 0.037 | 0.038 |
| H | 1.28 | 1.32 | 0.050 | 0.052 |
| J | 0.38 | 0.42 | 0.015 | 0.017 |
| J1 | 0.58 | 0.62 | 0.023 | 0.024 |
| K | 0.88 | 0.92 | 0.035 | 0.036 |
| L | 2.08 | 2.12 | 0.082 | 0.083 |
| L1 | 3.63 | 3.67 | 0.143 | 0.144 |
| M | 0.59 | 0.70 | 0.023 | 0.028 |
| N | 0.02 | 0.08 | 0.0008 | 0.003 |
| P | 0.08 | 0.17 | 0.003 | 0.007 |

Dimensions are shown in
millimeters (inches)