

AP16093

Getting started with XC164CS starterkit using DAvE, Tasking EDE & CrossView Pro Debugger

Microcontrollers



Never stop thinking

Edition 2006-06-13

**Published by
Infineon Technologies AG
81726 München, Germany**

**© Infineon Technologies AG 2006.
All Rights Reserved.**

LEGAL DISCLAIMER

THE INFORMATION GIVEN IN THIS APPLICATION NOTE IS GIVEN AS A HINT FOR THE IMPLEMENTATION OF THE INFINEON TECHNOLOGIES COMPONENT ONLY AND SHALL NOT BE REGARDED AS ANY DESCRIPTION OR WARRANTY OF A CERTAIN FUNCTIONALITY, CONDITION OR QUALITY OF THE INFINEON TECHNOLOGIES COMPONENT. THE RECIPIENT OF THIS APPLICATION NOTE MUST VERIFY ANY FUNCTION DESCRIBED HEREIN IN THE REAL APPLICATION. INFINEON TECHNOLOGIES HEREBY DISCLAIMS ANY AND ALL WARRANTIES AND LIABILITIES OF ANY KIND (INCLUDING WITHOUT LIMITATION WARRANTIES OF NON-INFRINGEMENT OF INTELLECTUAL PROPERTY RIGHTS OF ANY THIRD PARTY) WITH RESPECT TO ANY AND ALL INFORMATION GIVEN IN THIS APPLICATION NOTE.

Information

For further information on technology, delivery terms and conditions and prices please contact your nearest Infineon Technologies Office (www.infineon.com).

Warnings

Due to technical requirements components may contain dangerous substances. For information on the types in question please contact your nearest Infineon Technologies Office.

Infineon Technologies Components may only be used in life-support devices or systems with the express written approval of Infineon Technologies, if a failure of such components can reasonably be expected to cause the failure of that life-support device or system, or to affect the safety or effectiveness of that device or system. Life support devices or systems are intended to be implanted in the human body, or to support and/or maintain and sustain and/or protect human life. If they fail, it is reasonable to assume that the health of the user or other persons may be endangered.

AP16093

Revision History: 2006-06 V1.0

Previous Version: none

Page	Subjects (major changes since last revision)

We Listen to Your Comments

Any information within this document that you feel is wrong, unclear or missing at all?
Your feedback will help us to continuously improve the quality of this document.
Please send your proposal (including a reference to this document) to:

mcdocu.comments@infineon.com



Table of Contents		Page
Introduction.....		5
1	Connect the XC164CS Starterkit	6
2	How to use DAvE	8
2.1	Using DAvE to configure XC164CS.....	9
3	How to use Tasking	19
3.1	Using Tasking to generate code	19
4	How to use CrossView Pro	31
4.1	Using CrossView Pro for debugging.....	31
5	Conclusion	36

Introduction

This application note introduces the Infineon Technologies XC164CS 16bit microcontroller. It aimed to guide users to a quick start to the XC164CS starterkit using DAVe and Tasking EDE.

All the information contained in this application note is retrieved from the XC164CS official documentation (System Units and Peripheral Units) and the XC16xBoard User Manual. References should always be made to these documents.

In this application note, we will be using the following abbreviation:

- “Tasking” for the Altium Tasking Tools for C166-ST10 v8.5r2 (C Compiler, Assembler & Linker).
- “CrossView” for the Altium Tasking CrossView Pro Debugger v8.5r2.
- “EDE” for the Altium Tasking Embedded Development Environment.
- “DAvE” for the Infineon Technologies Digital Application virtual Engineer.
- “Starterkit” for the Infineon Technologies XC164CS Starterkit Board.

The application note will start by

1. How to easily connect the XC164CS starterkit to a computer to start evaluation,
2. How to use DAVe to program the Infineon microcontroller you want to use in your project, by offering intelligent wizards, that help you configure the chip to work the way you need it and automatically generate C-level templates with appropriate driver functions for all of the on-chip peripherals and interrupt controls,
3. Use Tasking for program building, editing and code generation,
4. Finally, use CrossView for simple debugging such as setting of breakpoints & viewing of core/peripherals registers. (Detailed information for Tasking and CrossView at www.tasking.com)

1 Connect the XC164CS Starterkit

The starterkit (Figure 1) is a versatile tool, providing quick access to the capabilities of XC16x's powerful architecture. Applications can be developed easily with the starterkit.

The starterkit is equipped with SRAM memory and peripherals for connection to the environment. There is also an interface for the On Chip Debugging Features (OCDS1).

For connection with the starterkit to a computer, the following configuration and hardware are required:

1. Computer parallel port configured as "EPP" operating mode (for proper CrossView operation),
2. Parallel cable,
3. An external regulated 9 to 12V, 500mA DC power supply for the starterkit (Figure 2),
4. Starterkit DIP switch S106 configured to '0000", all 'OFF' (Standard Internal Start from flash),
5. Starterkit Jumper JP501 (OCDS_EN) connected to 1-2, onboard wiggler enabled.

To have access to all microcontroller pins, user need to use the extension board (Figure 3). The labeling set for the extension board comes together with the starterkit package.

A detailed description of the usage of this board is beyond the scope of this application note, the reader is referred to the XC16xBoard User Manual for detailed information.

Connect up the starterkit to the DC power supply and one end of the parallel cable to the starterkit and the other end to the computer parallel port. Power up the starterkit and press the blue 'Reset' button once.

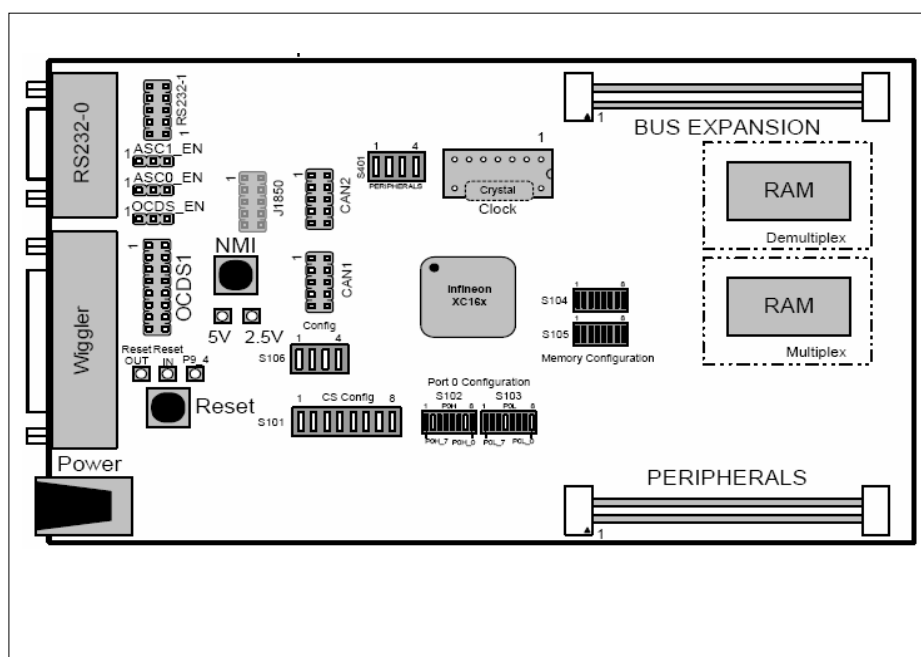


Figure 1 XC164CS starterkit

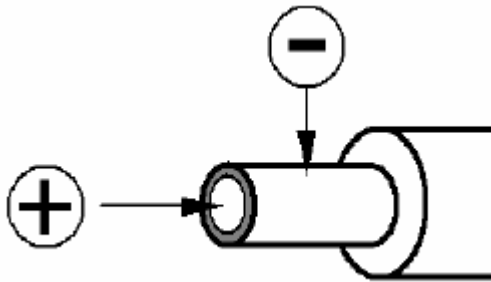


Figure 2 DC Power Supply

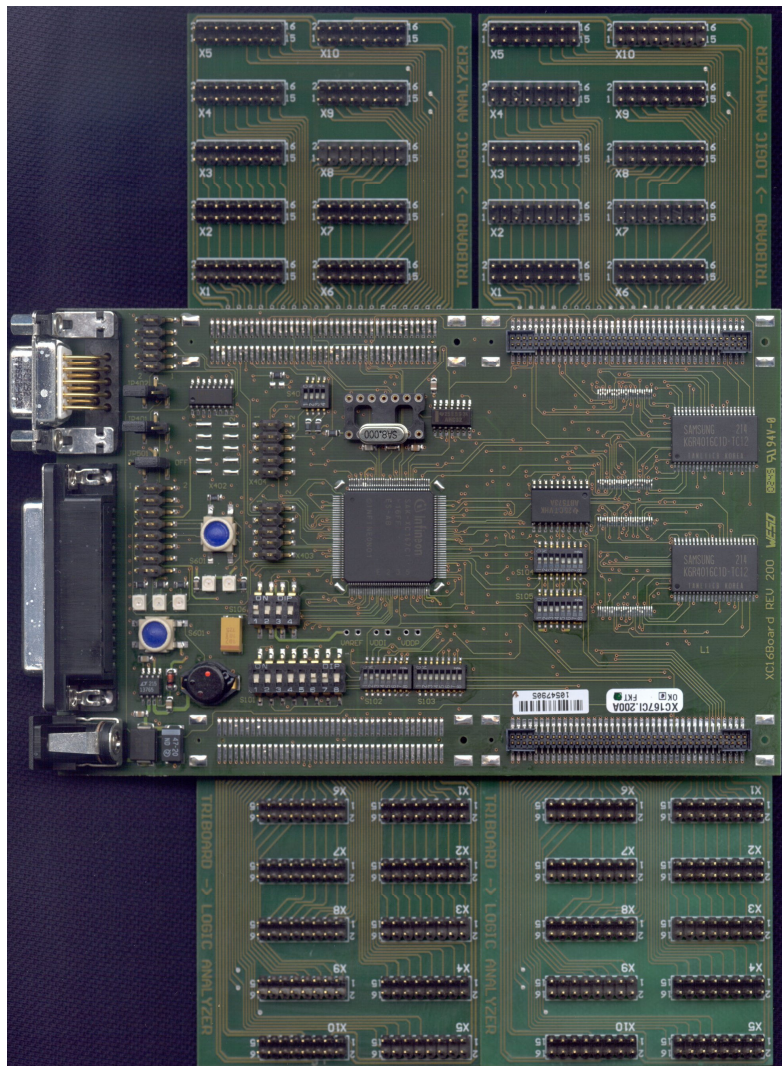


Figure 3 Starterkit with Extension Board

2 How to use DAVe

DAVe stands for Digital Application virtual Engineer and is Infineon Technologies' code generator for their range of 8, 16 and 32 Bit Microcontrollers. It provides initialization, configuration and driver code to ease programming for beginners as well as experts.

To install DAVe, user needs to follow the following steps (Figure 4):

1. Download and install the DAVe Mothersystem from <http://www.infineon.com/dave> (The starterkit package contains a CD for the installation of DAVe),
2. Download the required DIP file for the particular microcontroller you are using (i.e. XC164CS),
3. Install the DIP file.

Users can refer to the application note for DAVe if they encountered any problem.

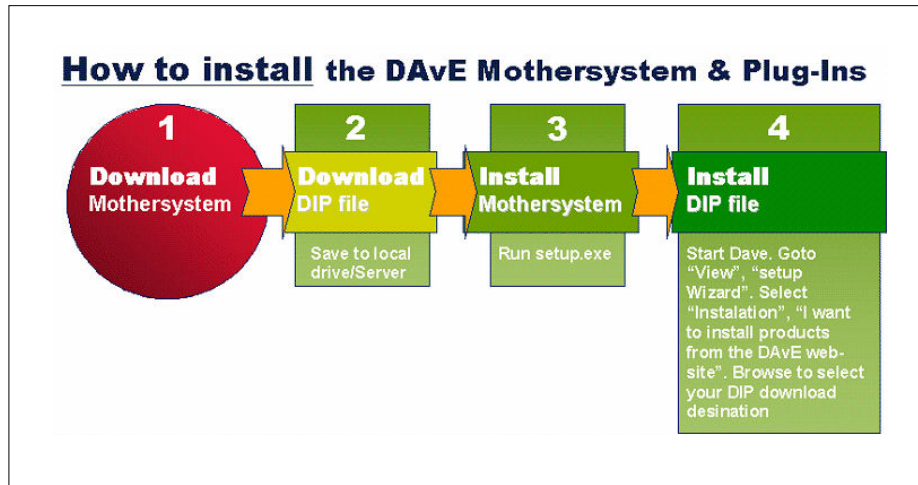


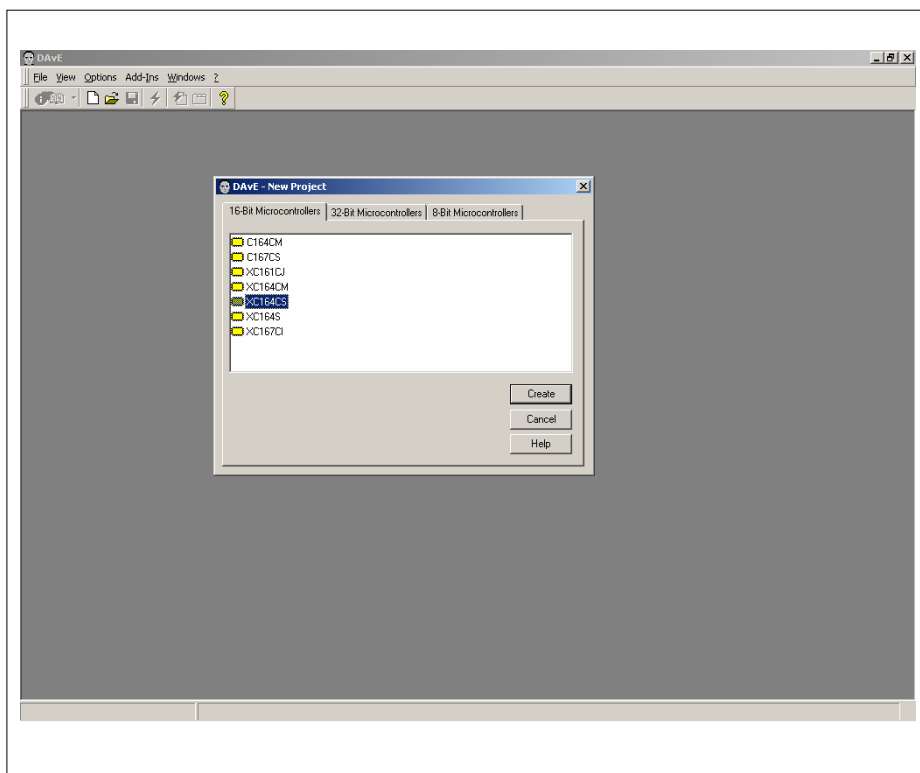
Figure 4 How to install DavE

2.1 Using DAVe to configure XC164CS

We will be using DAVe to configure the XC164CS to toggle a particular port pin. The first step will be to start the program generator DAVe and to create a new project to select the XC164CS microcontroller.



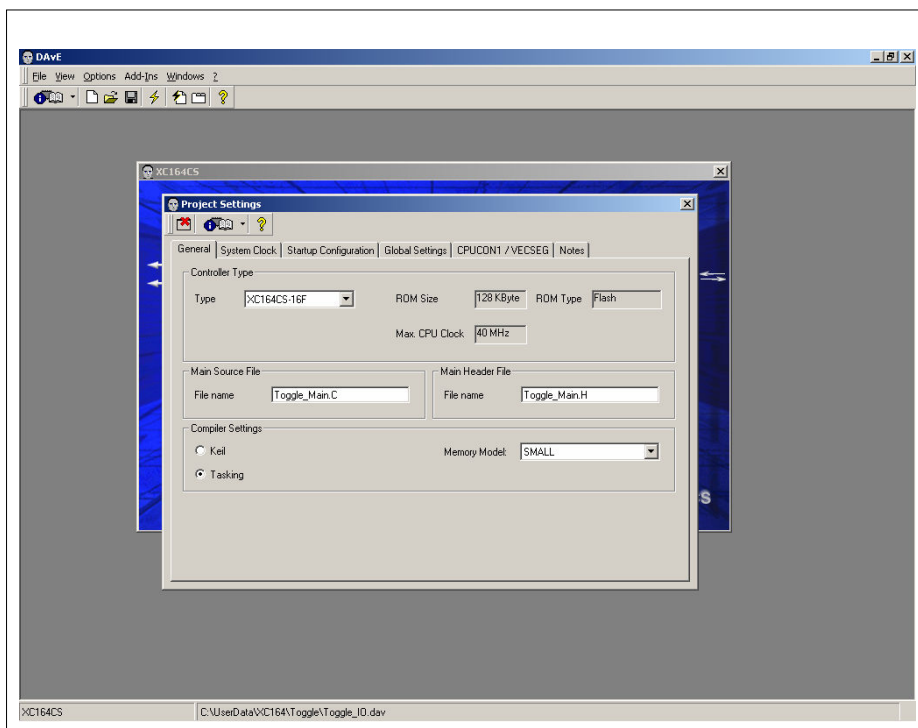
1. File -> New -> 16-Bit Microcontroller -> XC164CS -> Create



Project settings

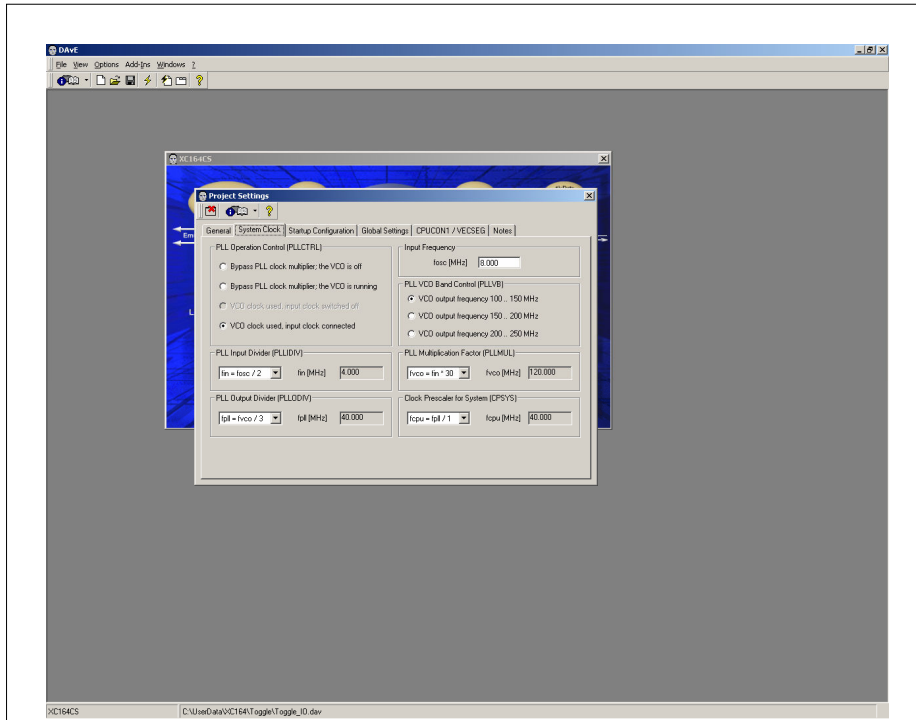
2. General

- Main Source File: Rename Main.c to Toggle_Main.c
- Main Header File: Rename Main.h to Toggle_Main.h
- Compiler Settings: Select Tasking



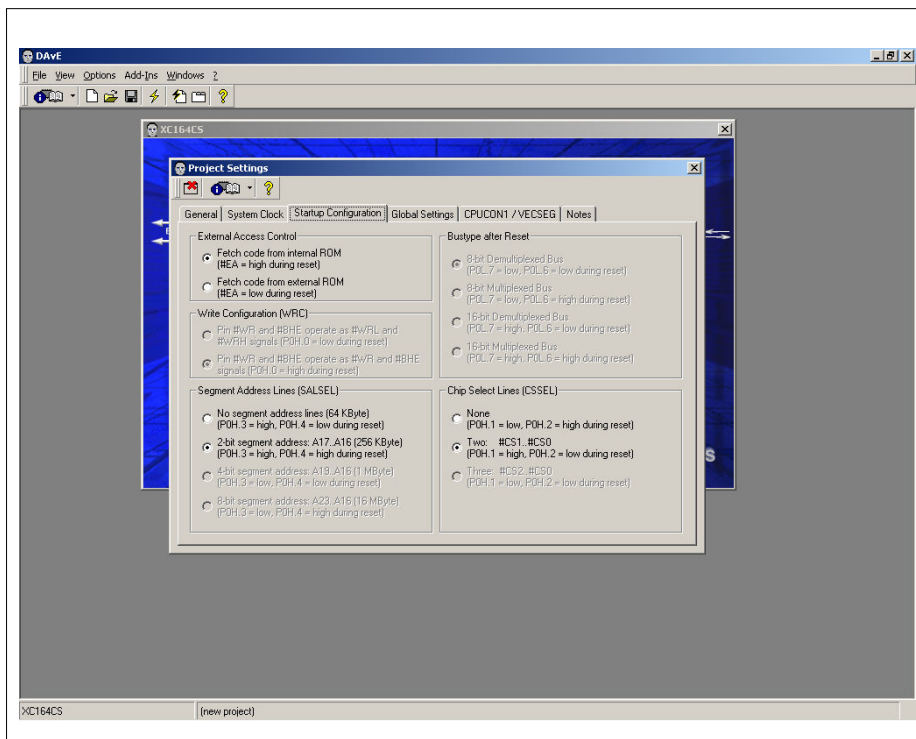
3. System Clock

- Input Frequency: Oscillator Clock: 8MHz
- PLLIDIV = 2, PLLMUL = 30 & PLLDIV = 3
- Clock Prescaler for System: CPU Clock: **40MHz** (Max. CPU Clock up to 40MHz)



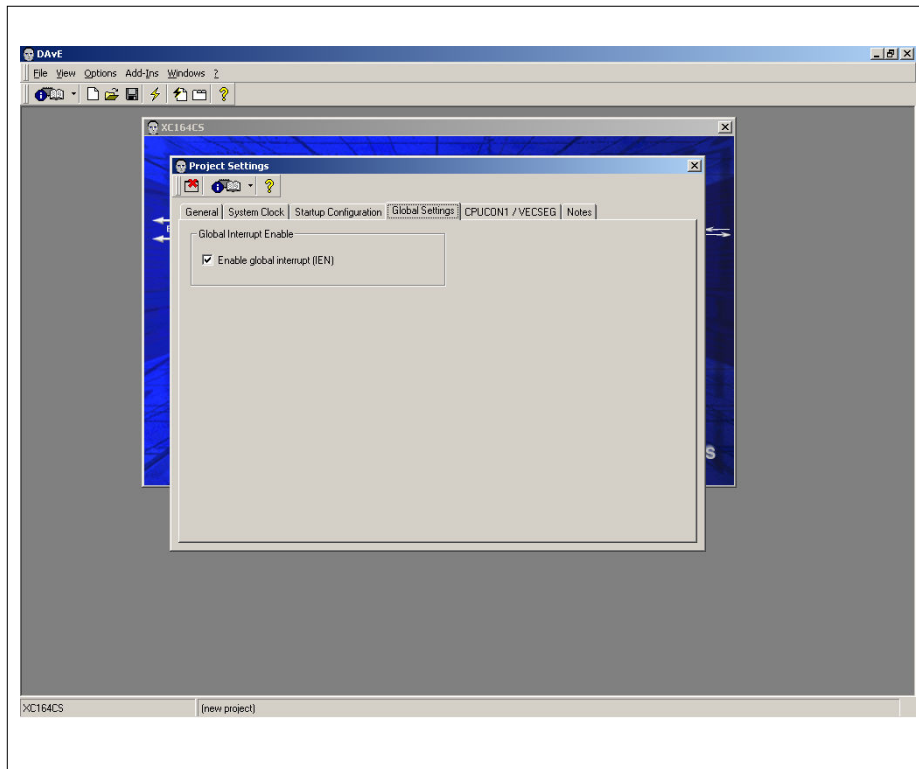
4. Startup Configuration

- External Access Control: Select Fetch code from internal ROM



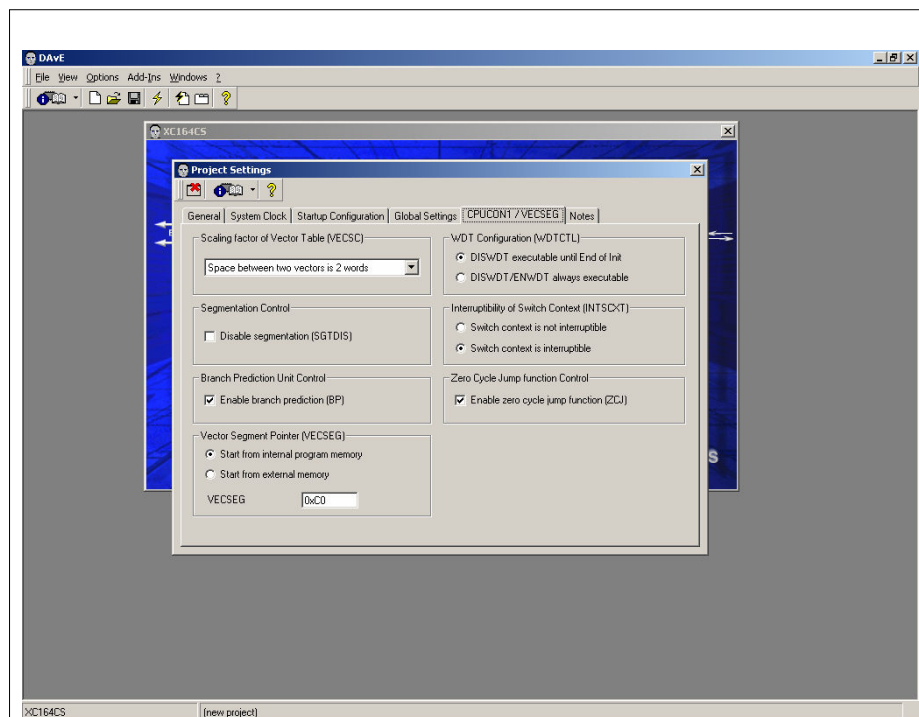
5. Global Settings

- No Change



6. CPUCON1 / VECSEG

- Vector Segment Pointer: Select Start from internal program memory

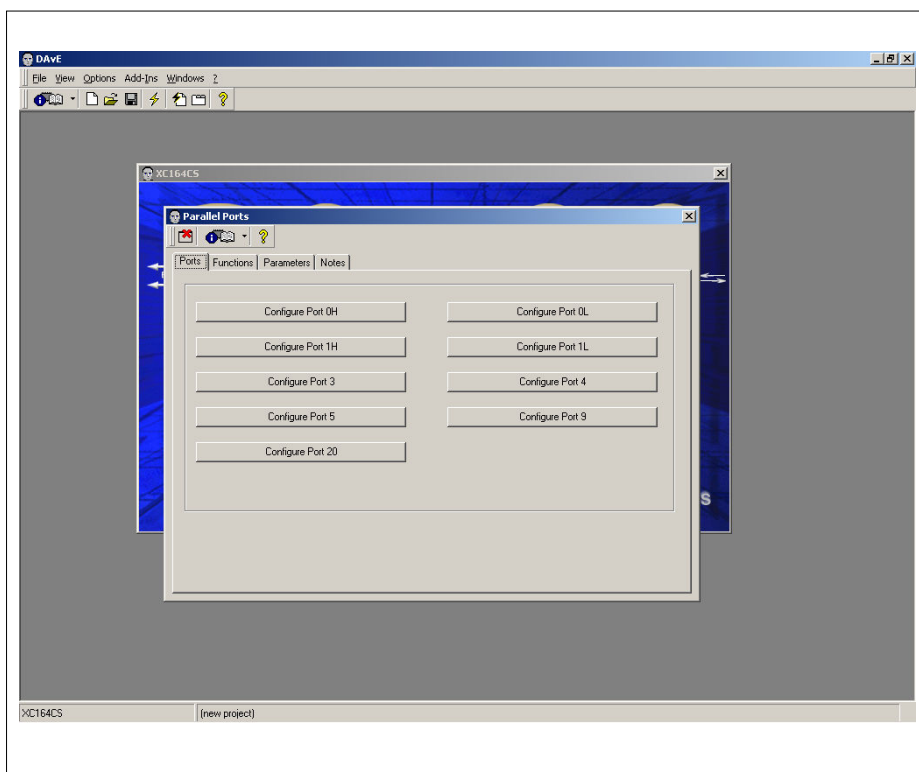


7. Exit by clicking **X** in the close button.



Parallel Ports

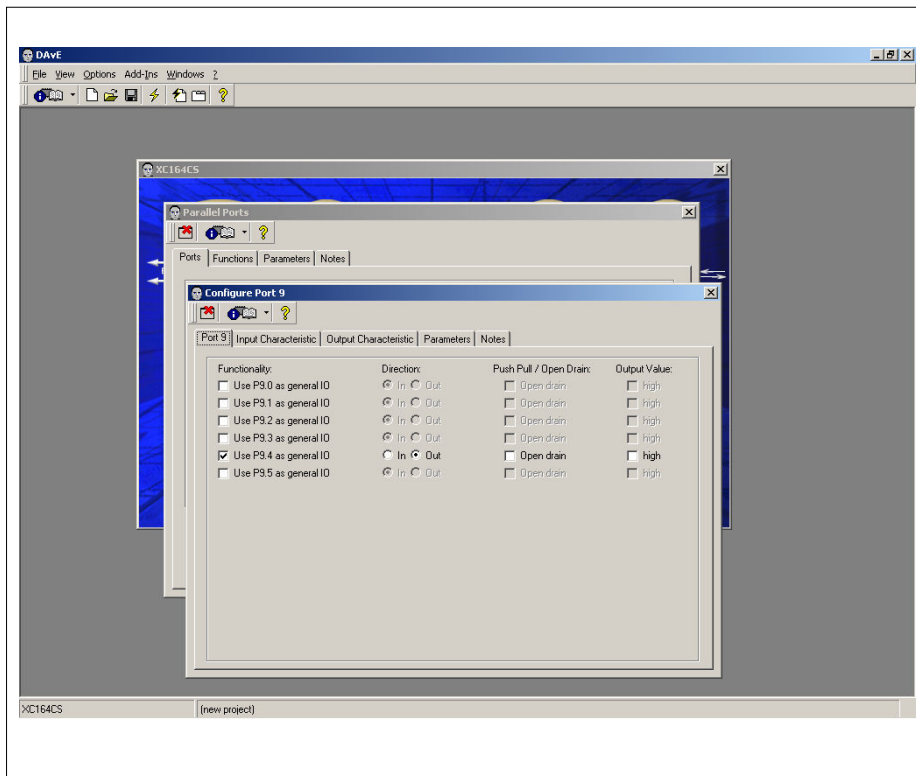
8. Configure Parallel Ports by clicking on Port



Configure Port 9

9. Click on Configure Port 9

- Functionality : Tick Use P9.4 as general IO
- Direction: Tick Out

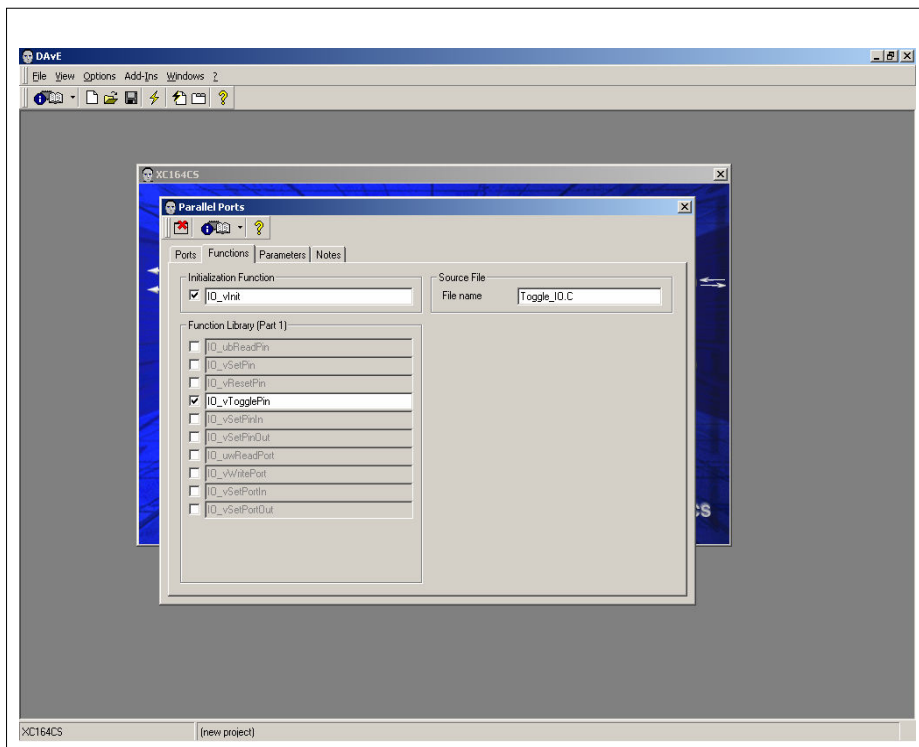


P9.4 corresponds to microcontroller Port 9 Pin 4 which is connected to the starterkit LED.

10. Exit by clicking **X** in the close button.

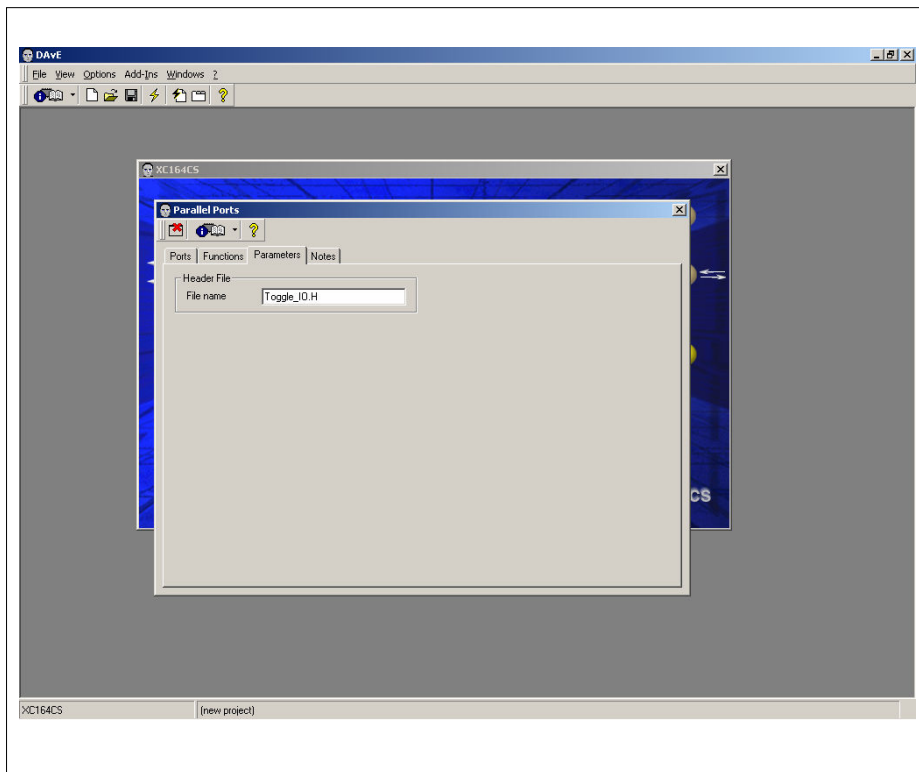
11. Functions

- Initialization Function: Tick IO_vInit
- Function Library: Tick IO_vTogglePin
- Source File: Rename IO.C to Toggle_IO.C



12. Parameters

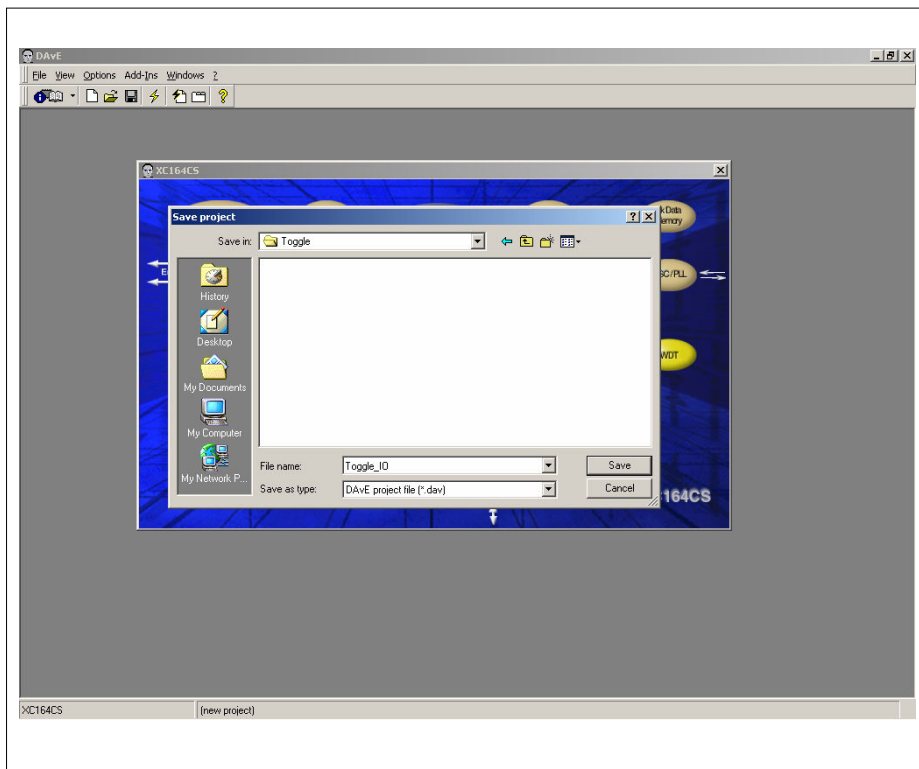
- Header File: Rename IO.H to Toggle_IO.H



- Exit by clicking **X** in the close button.

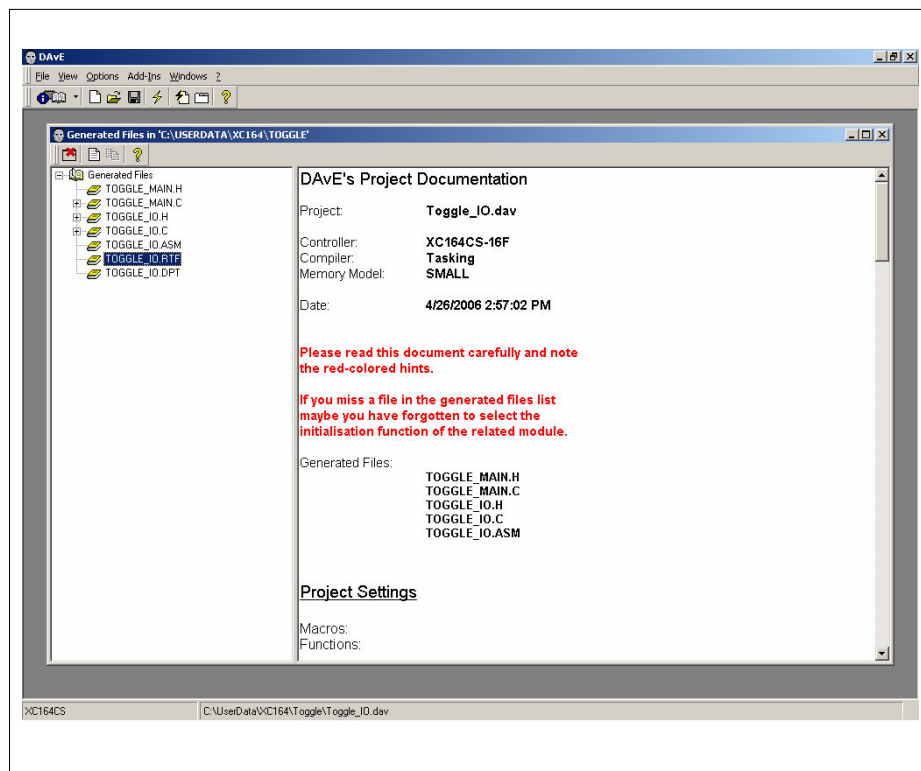
14. Save the Project

- File -> Save
- Choose filename as 'Toggle_IO' and save file in folder of your choice.



15. Generate Code

- File -> Generate Code or



DAVe will show all the files it has generated. File Viewer opens automatically.

16. Close DAVe

- File -> Exit
- Click Yes

3 How to use Tasking

The C166 software development toolset from Altium is a complete programming package for the XC166/C166 family, and includes a C/C++ compiler, assembler/linker and debugger (simulator, ROM monitor and OCDS-L1).

The starterkit package contains a CD for the installation of a demo version for Tasking EDE.

To install Tasking:

1. Run the 'Setup' file inside Tasking CD.

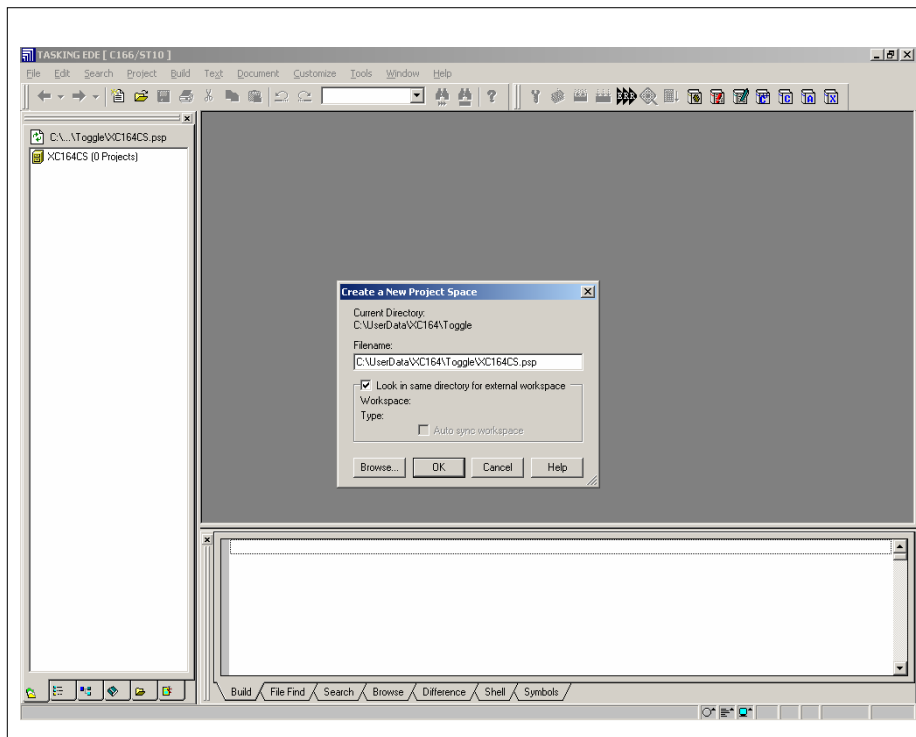
For detailed information on Tasking, please visit www.tasking.com.

3.1 Using Tasking to generate code

First start the program Tasking EDE for C166-ST10. If you see an open project, close it by File -> Close Project Space.

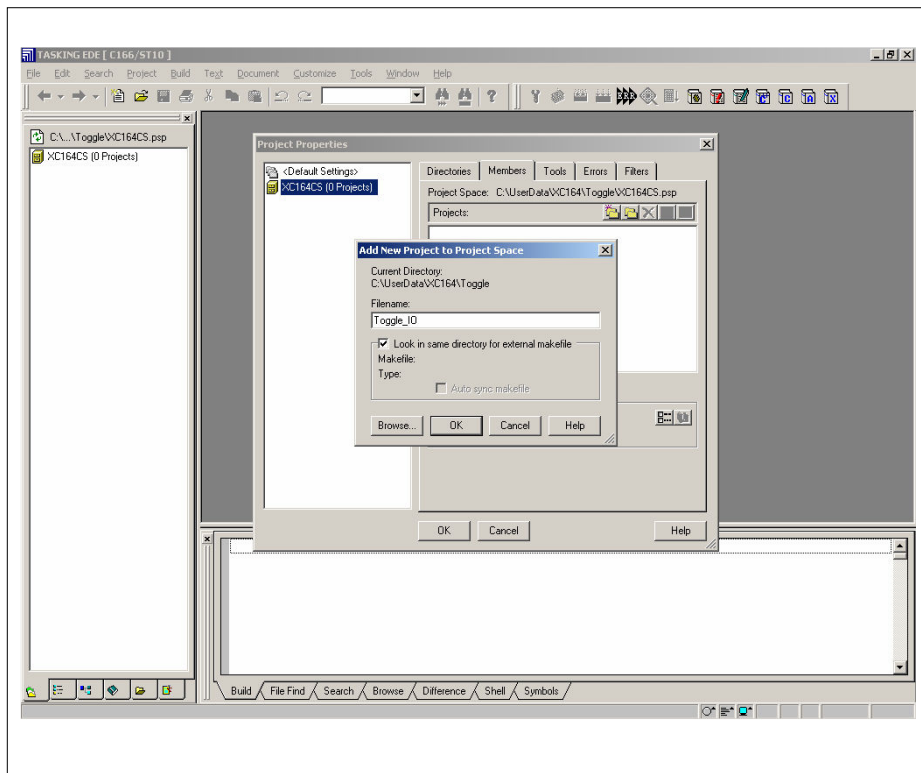
1. Create a new project space

- File -> New Project Space
- Click on Browse to select a folder which you want to save your project. (Choose folder which you have saved DAVE generated files previously)
- Choose project name as 'XC164CS' and click Open -> OK



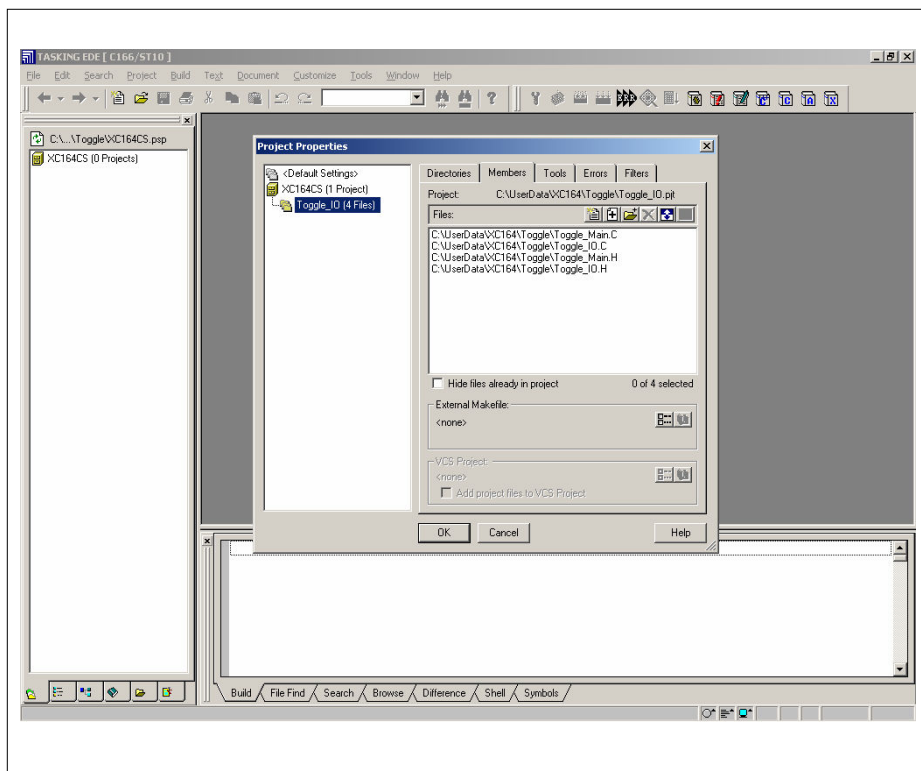
2. Add new project to project space

- Click on icon Add new project to project space
- Enter project name as 'Toggle_IO' and click OK.



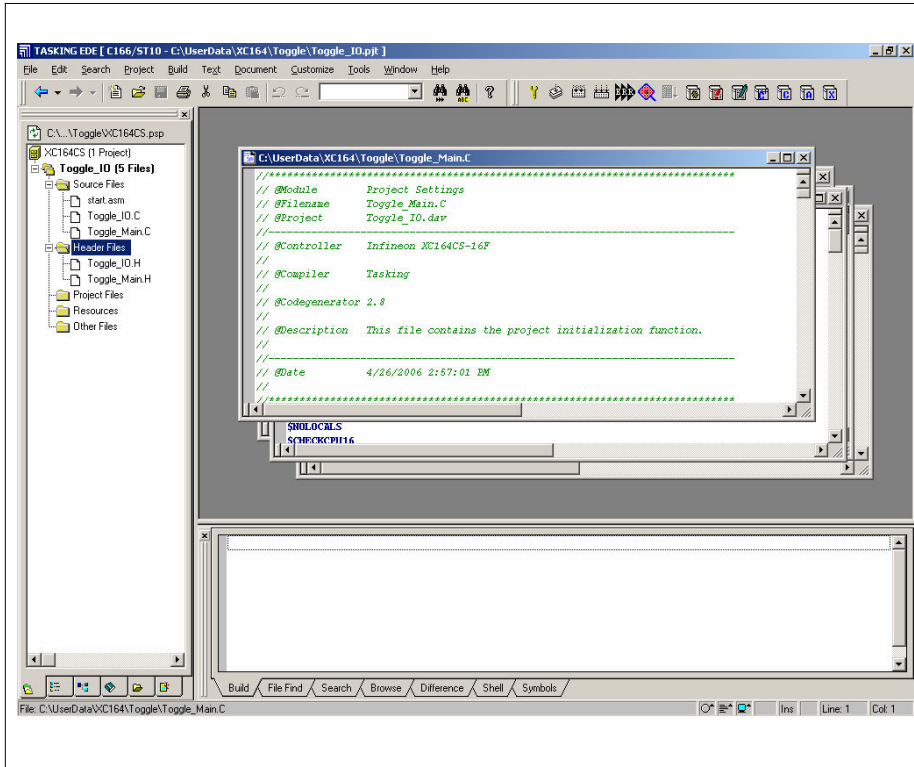
3. Add existing files to project

- Click on icon Add existing files to project
- Add 'Toggle_Main.C', 'Toggle_Main.H', 'Toggle_IO.C' and 'Toggle_IO.H' and click OK. (Remember that these are files generated by DAVE)



4. Load Files

- At the top menu, click Project -> Load Files -> Invert -> OK



5. Edit Toggle_Main.C

- Insert the following code in the main function, between '// USER CODE BEGIN' and '// USER CODE END'

```
// USER CODE BEGIN (Main,2)

void delay(void);

// USER CODE END


// USER CODE BEGIN (Main,4)

while(1)
{
    IO_vTogglePin(P9_P4); //toggle Port9 Pin4
    delay();
}

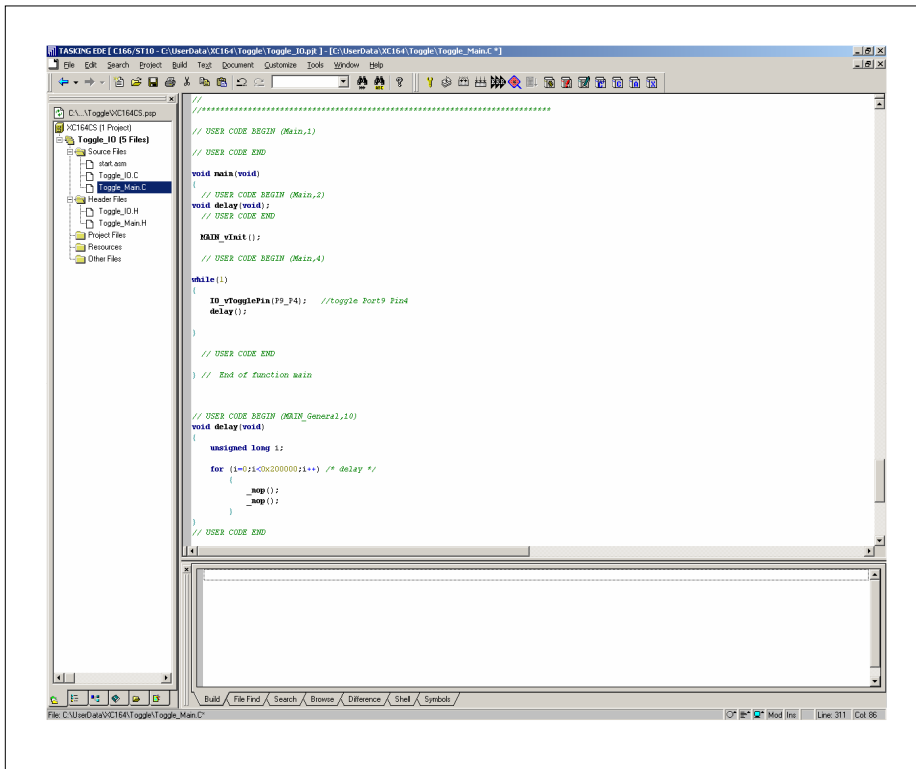
// USER CODE END


// USER CODE BEGIN (MAIN_General,10)

void delay(void)
{
    unsigned long i;

    for (i=0;i<0x200000;i++) /* delay */
    {
        _nop();
        _nop();
    }
}

// USER CODE END
```

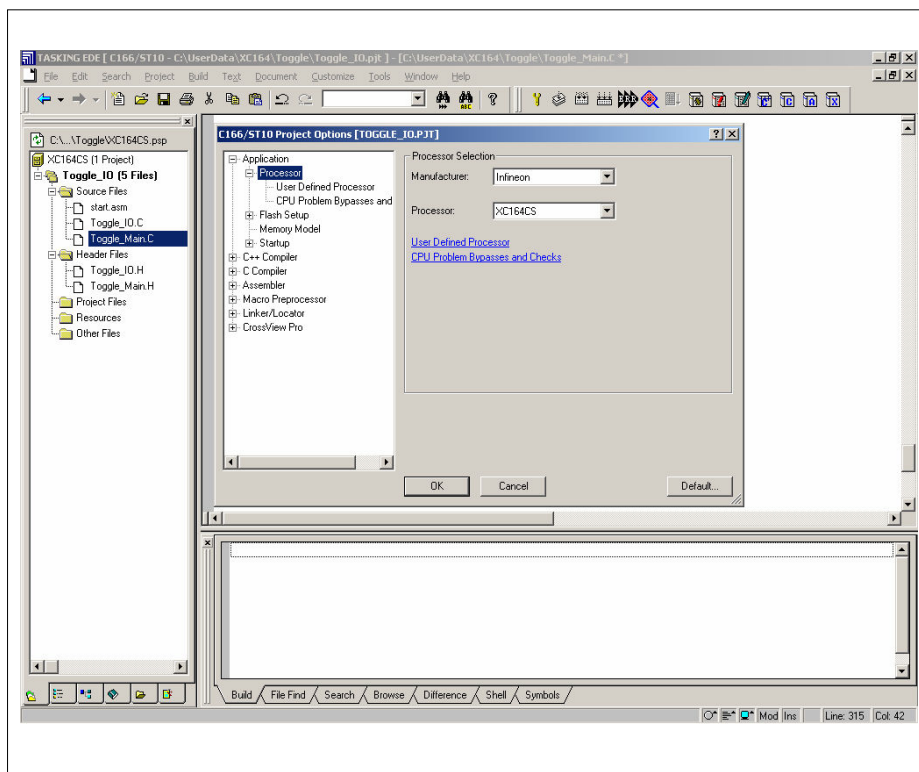


Note:

DAvE doesn't change code which is inserted between 'USER CODE BEGIN' and 'USER CODE END'. Therefore, whenever adding code to DAvE's generated code, write it between 'USER CODE BEGIN' and 'USER CODE END'.

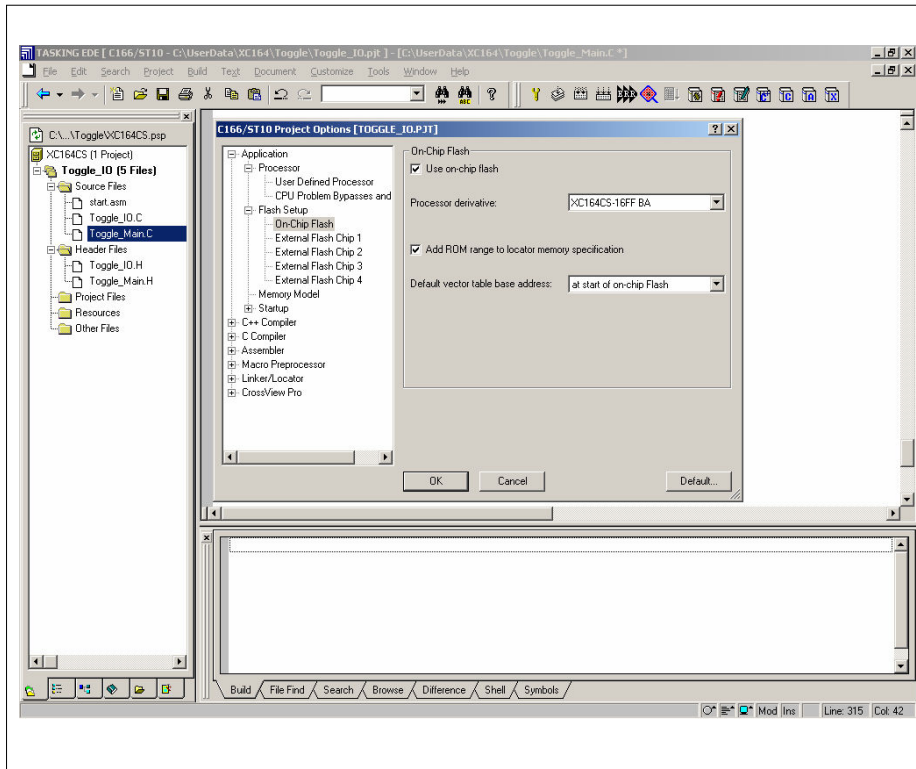
6. Configure application

- At the top menu, click Project -> Project Options
- Under Application -> Processor, change Manufacturer to Infineon and Processor to XC164CS



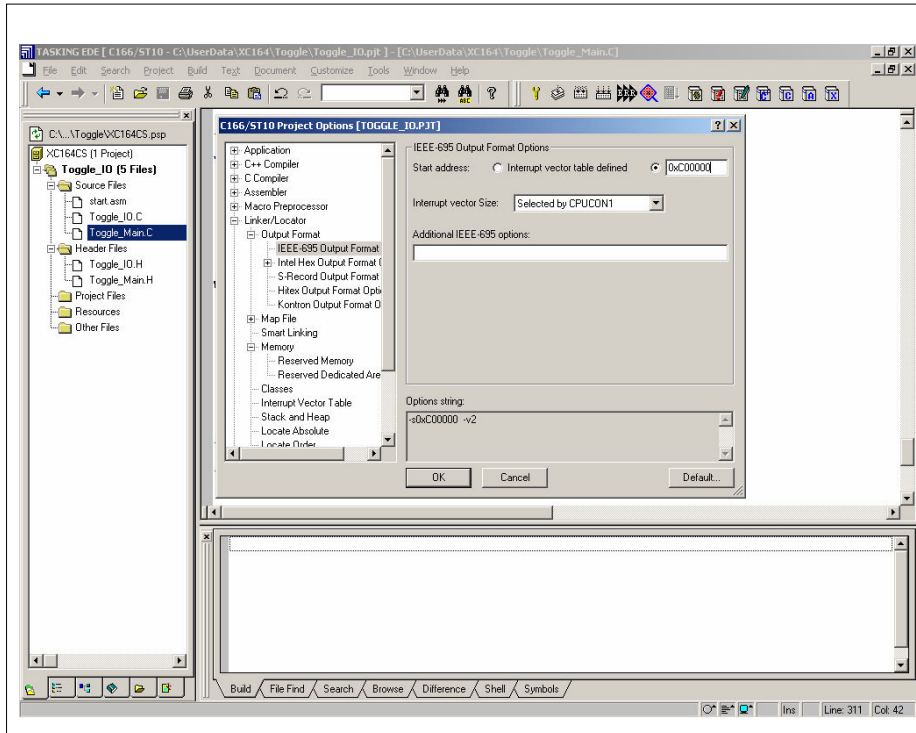
7. Configure Flash Setup

- Under Application -> Flash Setup -> On-Chip Flash, tick Use on-chip flash and select the Processor derivative for the starterkit. (Hint: the processor derivative can be seen on the markings on top of the microcontroller)



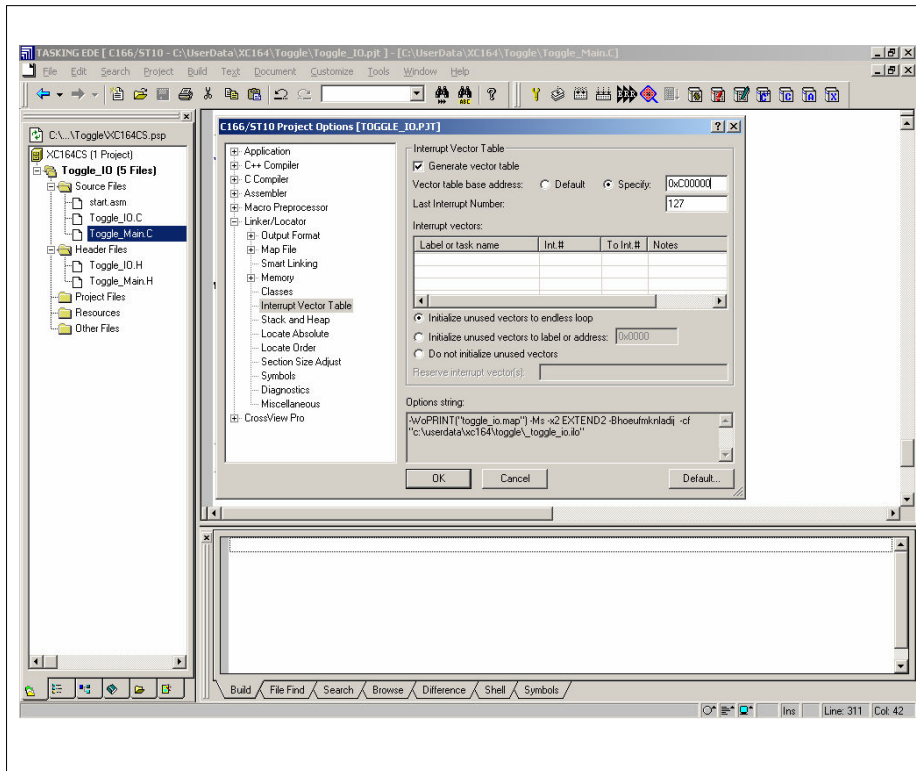
8. Configure Linker/Locator

- Under Linker/Locator -> Output Format -> IEEE695 Output Format Options, enter Start address as '0xC00000'



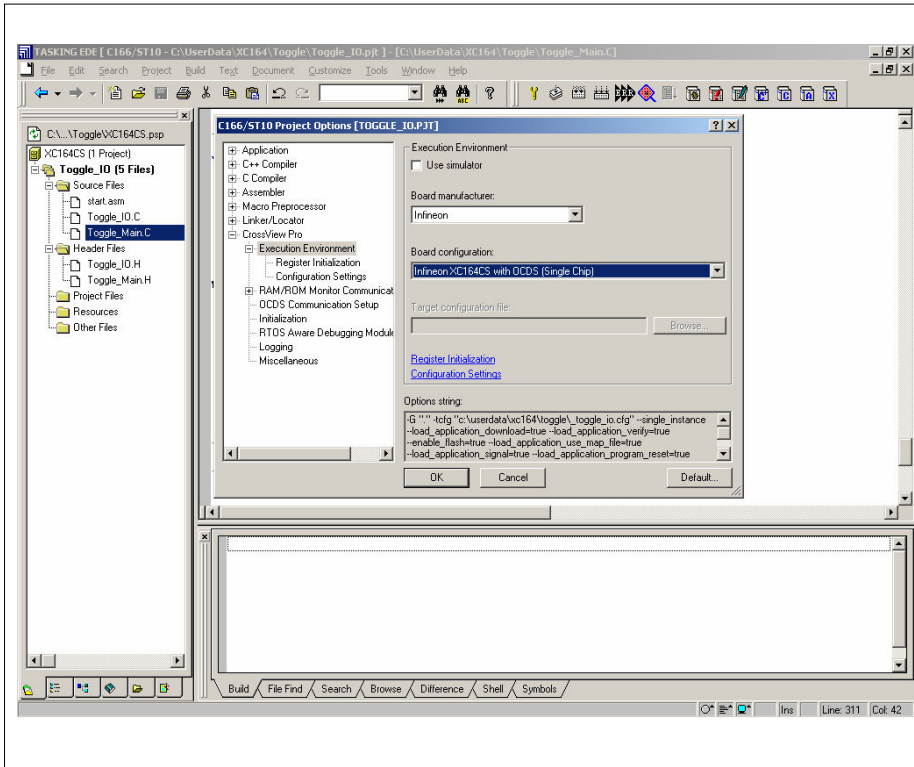
9. Configure Linker/Locator

- Under Linker/Locator -> Interrupt Vector Table, enter Vector table base address as '0xC00000'




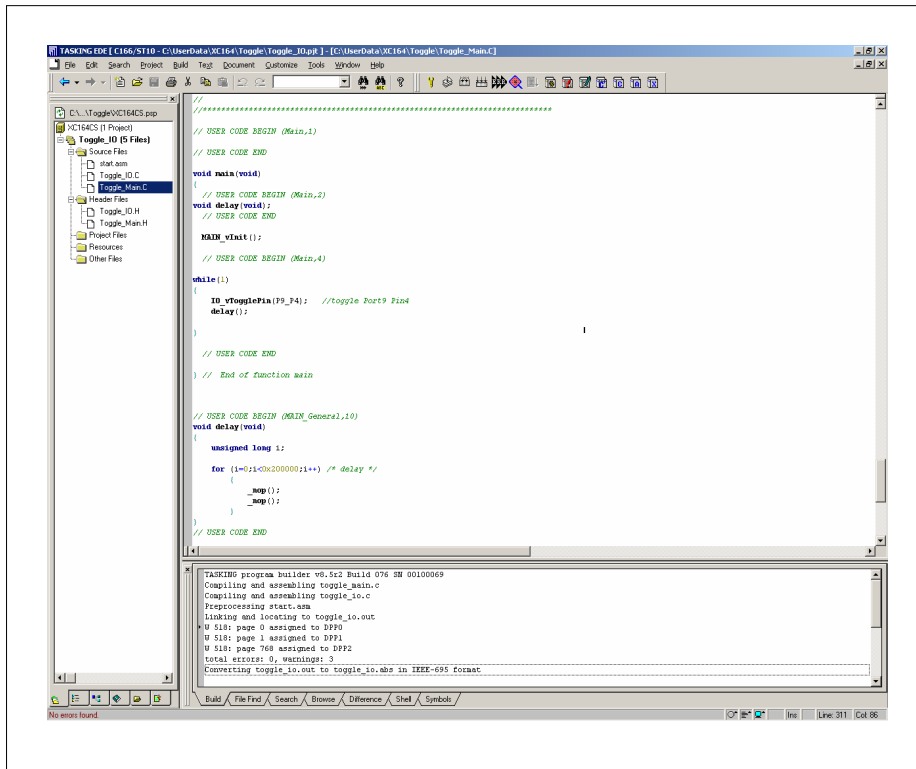
10. Configure CrossView Pro

- Under CrossView Pro -> Execution Environment, remove tick in Use simulator. Change Board manufacturer to Infineon and Board configuration to Infineon XC164CS with OCDS (Single Chip).



11. Generate Application Program

- At the top menu, click Build -> Rebuild or 



4 How to use CrossView Pro


CrossView Pro reduces the time spent during the testing and debugging phases of embedded systems project development. An easy-to-use interface with powerful and extensive debugging features helps you debug your applications faster.

CrossView Pro is integrated together within Tasking EDE environment.

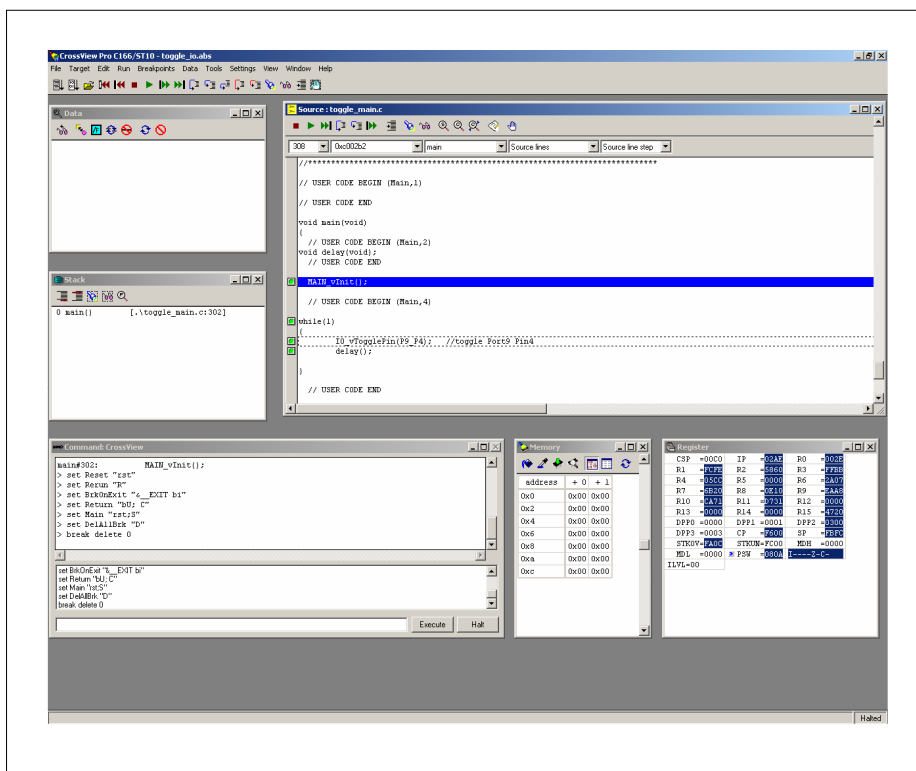
For more information, please visit www.tasking.com.

4.1 Using CrossView Pro for debugging

Ensure that the starterkit is powered up and connected to the computer parallel port as described in chapter 1. With the setting for DIP switch S106 as described in chapter 1, the XC164CS is configured to start from the internal flash.

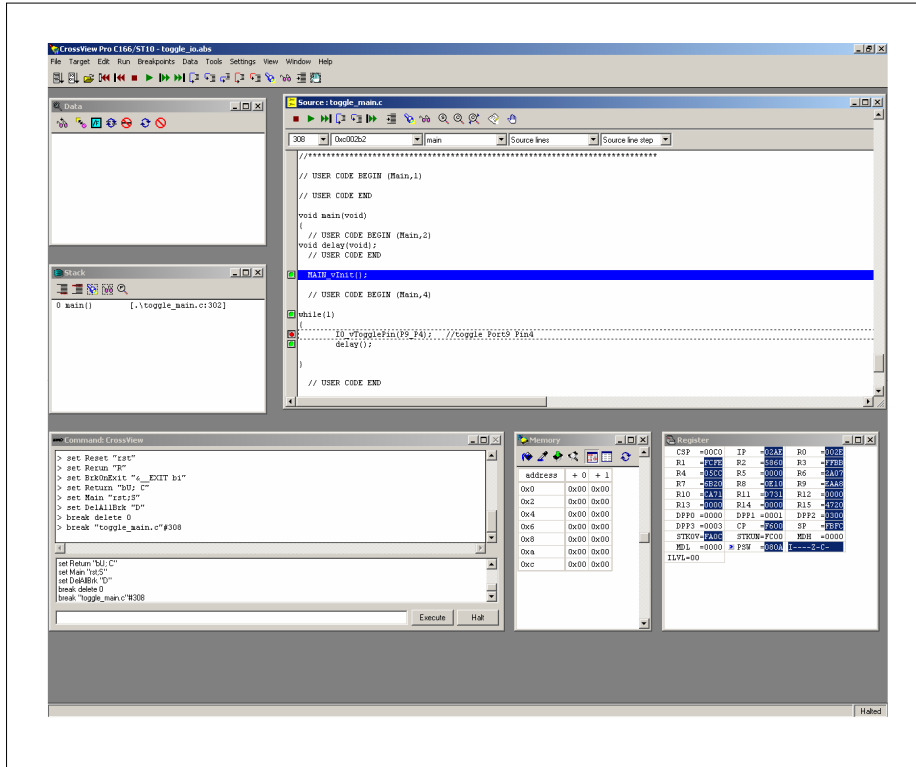
Start CrossView by clicking on 

The following GUI will appear.



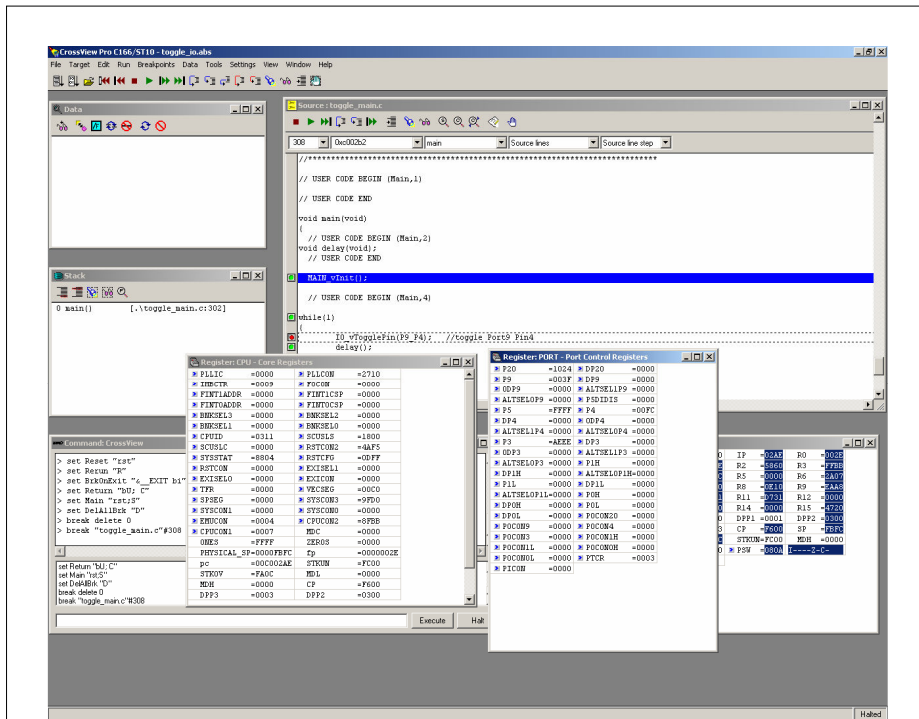
1. Set Breakpoint

- Click on the green LED beside the function `IO_vTogglePin(P9_P4)` in `Toggle_Main.C` which is the code we have inserted. The green LED will turn RED.



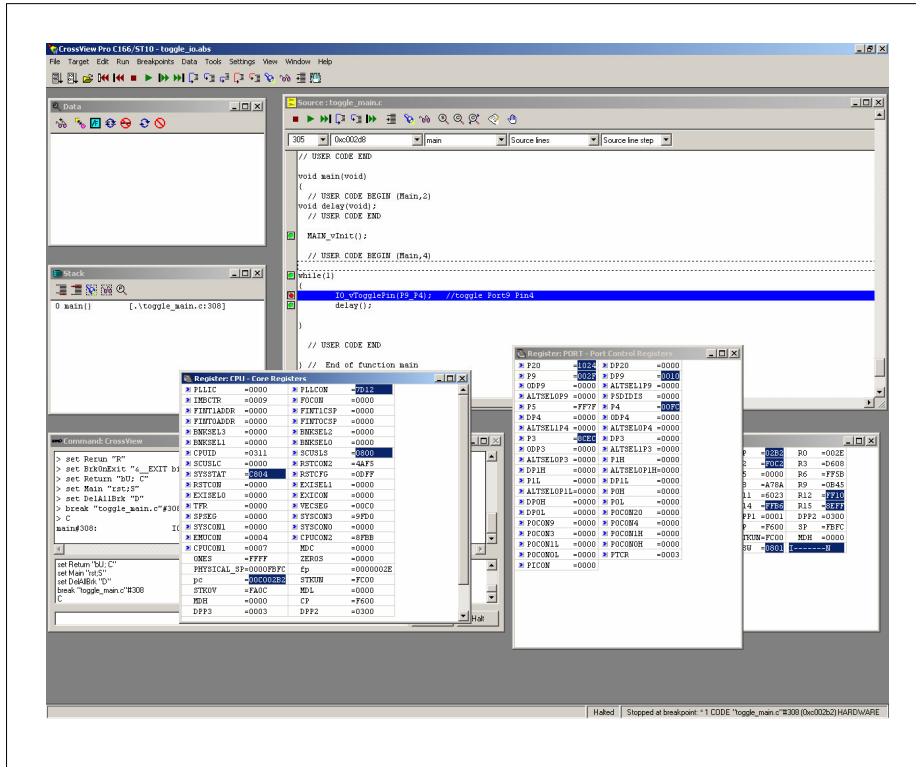
2. View Core/Peripheral Registers

- At the top menu, click View -> Register. User will be able to select from a list of available registers for monitoring. (i.e. CPU & PORT)



3. Execute Program

- At the top menu, click Run -> Run



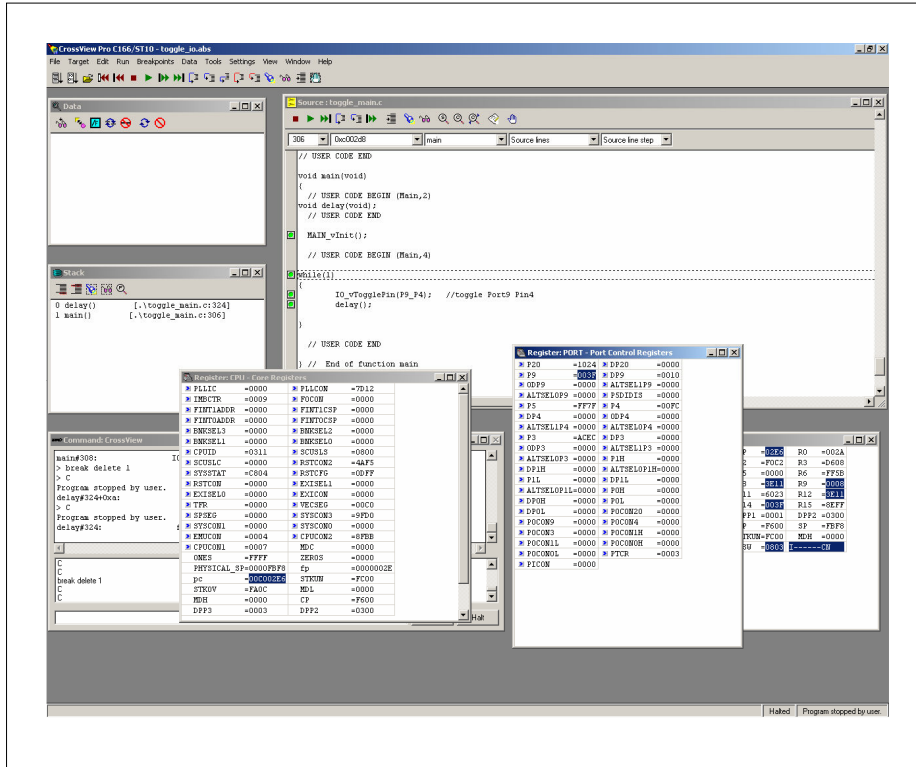
With the breakpoint at function `IO_vTogglePin(P9_P4)`, the program will stop there. User will be able to monitor the current core/peripheral registers status.

For example, as `PLLCON` is set as `0x7D12` in function `MAIN_vInit`. The `PLLCON` core register value can be observed correctly in CrossView.

By pressing function key 'F5' continuously, the LED on the starterkit can be toggled since Port 9 Pin 4 (`P9_P4`) is connected to the starterkit LED. It can also be observed in the PORT register window that `P9_P4` is changed between 0 and 1.

4. Remove Breakpoint

- Click on the red LED beside the function IO_vTogglePin(P9_P4) in Toggle_Main.C which is the code we have inserted. The red LED will turn GREEN.



By pressing the function key 'F5' once, the program will run and the LED on the starterkit can be observed to be toggling periodically.

5 Conclusion

This application note showed users how to quickly started evaluating Infineon Technologies 16bit XC164CS microcontroller. Users can easily download additional DAVe DIP files to generate code for other 16bit derivatives for evaluation purpose. The steps described in tasking are generic so users can easily generate application code by making minimum changes to the project options. Some debugging techniques are also introduced when using CrossView such as setting of breakpoints and viewing of core/peripherals registers status.

Please note that all the code examples given this application note are aimed at demonstration purpose only. Code is neither optimized nor is its reliability guaranteed.

If you need more information, please contact your nearest Infineon sale's office. Contact information is available on Infineon web site: www.infineon.com.

We wish you a lot of success with the XC164CS!

<http://www.infineon.com>