

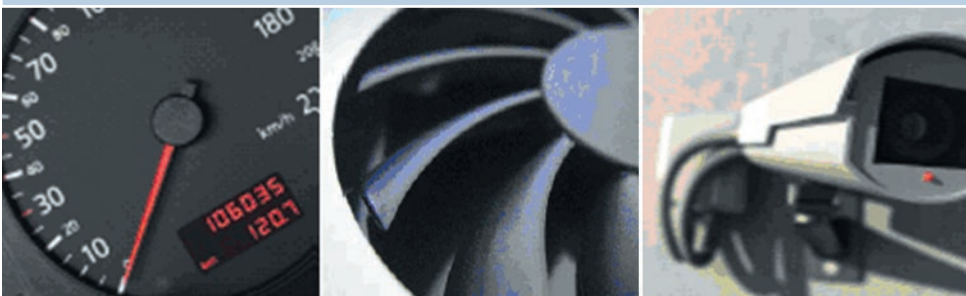
# XC866

## LIN Stepper Motor Application Kit

### Getting a Step Ahead

Miniaturization and increased automation are providing new opportunities for stepper motors in a broad area of industrial applications. With an emphasis on positioning, stepper motors require relatively simple control when compared to servo-systems which require feedback and complex control algorithms. To jump start stepper motor design and provide an introduction to the Local Interconnect Network (LIN) protocol Infineon is pleased to offer the XC866 LIN Stepper Motor Application Kit.

The kit is built around the 8-bit XC866 MCU and comes complete with reference software, development tools and design files that show how the XC866 may be used to control a stepper motor and communicate via the LIN bus. The LIN low level driver software is also included. The kit also features the TLE 6286 LIN Transceiver with integrated voltage regulator, watchdog timer and reset generator. A complete microcontroller development environment with tutorials, schematics and Hands-On-Trainings are also included in the kit to ensure that everyone gets a step ahead on their next stepper motor design.



### Ordering Code

- XC866 LIN Stepper Motor Application Kit

### Key Features

- Hands-On-Trainings to learn about stepper motors and control techniques
- Reference Software to control the stepper motor and deploy your own design
- Complete Schematics and Layout
- Mini-Wiggler for on-board debug via USB interface
- Free Development Tools environment

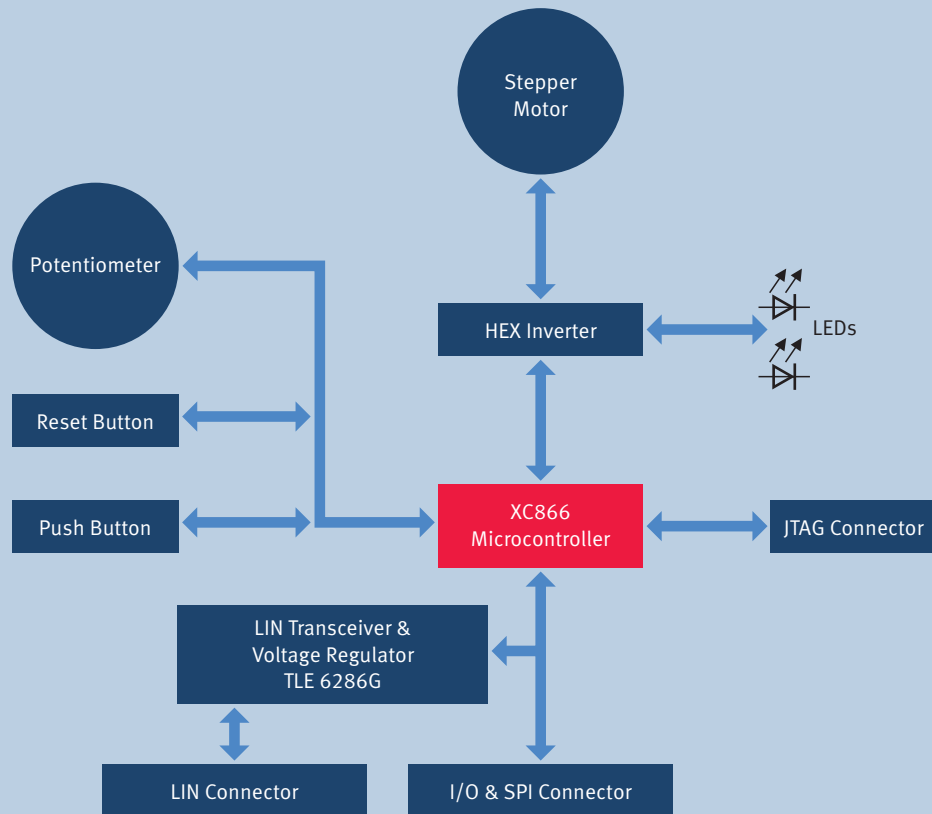
### Applications

- Instrumentation / Gauges
- Multi-Axis Positioning
- Surveillance Equipment
- CNC machining
- Printers
- Business Machines

# XC866

## LIN Stepper Motor Application Kit

Schematic Diagram of the Application Board



### 8-bit MCU XC866

- Cost effective 8051 based
- On-board Flash memory with 4K, 8K or 16K sizes
- Support for LIN (Local Interconnected Network)
- CAPCOM6E unit for flexible PWM generation
- 10-Bit ADC with extended functionality (e.g. comparator mode)
- Also available in HOT version for applications up to 140° C

### TLE 6286 LIN Transceiver

- LIN Transceiver (LIN1.3 and 2.1 compliant)
- Voltage regulator (5V/100mA)
- Watchdog (TLE 6286G)
- Adjustable under-voltage reset (TLE 6286G)
- DSO-16 Package

How to reach us:  
<http://www.infineon.com>

Published by  
 Infineon Technologies AG  
 81726 Munich, Germany

© 2008 Infineon Technologies AG  
 All Rights Reserved.

**Legal Disclaimer** The information given in this Product Brief shall in no event be regarded as a guarantee of conditions or characteristics. With respect to any examples or hints given herein, any typical values stated herein and/or any information regarding the application of the device, Infineon Technologies hereby disclaims any and all warranties and liabilities of any kind, including without limitation, warranties of non-infringement of intellectual property rights of any third party.

**Information** For further information on technology, delivery terms and conditions and prices, please contact the nearest Infineon Technologies Office ([www.infineon.com](http://www.infineon.com)).

**Warnings** Due to technical requirements, components may contain dangerous substances. For information on the types in question, please contact the nearest Infineon Technologies Office. Infineon Technologies components may be used in life-support devices or systems only with the express written approval of Infineon Technologies, if a failure of such components can reasonably be expected to cause the failure of that life-support device or system or to affect the safety or effectiveness of that device or system. Life support devices or systems are intended to be implanted in the human body or to support and/or maintain and sustain and/or protect human life. If they fail, it is reasonable to assume that the health of the user or other persons may be endangered.