

UWLink[®] Mainboard

Universal Wireless Link Mainboard for SmartLEWIS[™]
based on Infineon XC800 USCALE

Dear Customer,

Thank you for working with Infineon Wireless Control products!

This UWLink Mainboard will support you in testing the variety of Infineon's SmartLEWIS Wireless Control products, also to develop and debug your Wireless Control applications. Before you can experience the full capabilities of UWLink you have to download the latest package of complementary software and documentation from the Infineon Technologies www pages:

www.infineon.com/UWLink

The UWLink Mainboard may be used in two alternative scenarios:

- UWLink as a pre-programmed interface between a MS-Windows PC-Evaluation-Software, like the TDA5150-Teseus or the TDA5240-Explorer: The related UWLink firmware is either pre-programmed upon shipment of the UWLink-Combo-Kit or may be updated using the XC800_FLOAD Flash Loader software.
- UWLink as an open programmable XC886 microcontroller board: You can implement your own SmartLEWIS demonstration or application software using Keil's μ Vision 4 programming environment. Specific libraries and SW-frameworks for each of the SmartLEWIS products simplify your work.

On the next page you will find a short step-by-step guideline to start up this UWLink Mainboard and how to use the XC800_FLOAD Flash Loader software. We strongly recommend reading the UWLink Mainboard User Guide before you start operating UWLink for the first time.

For further support please contact your local Infineon Distributor, your responsible Infineon Sales Office, contact us directly at wirelesscontrol@infineon.com or call us at 0(0)800 951 951 951.

This is an international toll free phone number.

In case this service is not supported in your country, you can find a complete list of Infineon service phone numbers at www.infineon.com/customercaarecenter.

Please, don't forget to take notice of the legal disclaimer sheet.

We wish your development work using the SmartLEWIS product family will be successful.

Your Infineon Wireless Control Team

Kit Content

- UWLink Mainboard with USB connector compatible with SmartLEWIS UWLink Extension Boards (RF-Boards)
- Legal disclaimer sheet
- UWLink Extension-Board (depending on ordered kit)

Software and documentation available for download at

www.infineon.com/UWLink

- UWLink Mainboard User Guide
- SILink System Interface Link SW
- UWLink Mainboard test SW

Available UWLink extension boards

- TDA5150 UWLink RF-board
- TDA5230 UWLink RF-board
- TDA5225 UWLink RF-board
- TDA5235 UWLink RF-board
- TDA5240 UWLink RF-board
- TDA7255V UWLink RF-board
- TDA5255 UWLink adapter-board for use with the original TDA5255 evaluation board

Order number of the UWLink Mainboard:

- UWLink Mainboards are shipped as part of UWLink combinations together with UWLink Extension-Boards

UWLink[®] Mainboard

Step-by-Step Quick Start Guide

Please follow this step-by-step approach when you start up your UWLink Mainboard for the first time:

Note: The DAS Software package must be installed BEFORE the UWLink Mainboard is connected to the PC!

Step 1 – Download and install DAS Device Access Server:

- Go to www.infineon.com/DAS and download the latest DAS package, e.g. **DAS Edition v3.0.0**
- Extract the **das_edition_vx.y.z** ZIP-archive to a temporary directory on your PC
- Execute **DAS_vxyz_setup.exe** and follow the on-screen instructions
- Connect the UWLink Mainboard via USB to your PC.
After a view moments all drivers should be installed automatically.
- Now, start the **DAS Device Scanner** PC application
- Click **Start DAS Server**, click **Installed Servers**, start the **UDAS** server by clicking the related **Start** button and the **XC800-Family** entry will show up in the Device Select list

Step 2 – Download and install XC800_FLOAD Flash Loader Software:

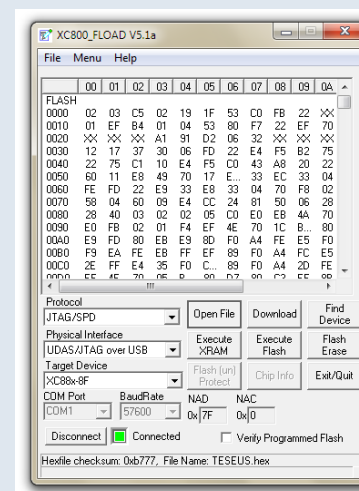
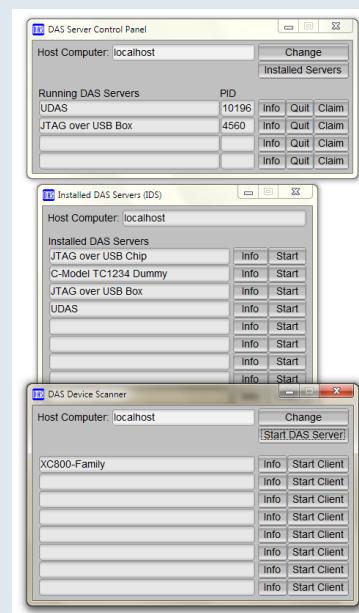
- Go to www.infineon.com/XC800, click on **XC800 Development Tools**, click on **Software Downloads** and download the latest FLOAD package, e.g. **FLOAD5.1a (setup_v5.1a.zip)**
- Extract the **setup_vx.y** ZIP-archive to a temporary directory on your PC
- Execute **setup.exe** and follow the on-screen instructions
- Now, start the **XC800_FLOAD** application
- Adjust the settings as follows:
 - Protocol: JTAG/SPD
 - Physical Interface: UDAS/JTAG over USB
 - Target Device: XC88x-8F
- Select hex-file via file menu, e.g. **TESEUS.hex**
- Connect to the target (press **Connect** button). After successful connection the light should be green.
- Now the Software is ready to download the hex-file to the target XC886. Press **Download** button.

Next Steps:

Installation of the Keil C51 μ VISION4 Tool Chain is described in the **UWLink Mainboard User Guide** to be downloaded from www.infineon.com/UWLink.

There you can find further information about product specific UWLink extensions boards and related SiLink hex-files.

Afterwards, follow the Quick Start Guide of your respective UWLink Extension-Board.



Antenna Colour Coding

- Green: 315 MHz
- Red: 434MHz
- White: 868 MHz
- Yellow: 915 MHz

How to reach us:
<http://www.infineon.com>

Published by
Infineon Technologies AG
81726 Munich, Germany

© 2009 Infineon Technologies AG
All Rights Reserved.

Legal Disclaimer The information given in this Product Brief shall in no event be regarded as a guarantee of conditions or characteristics. With respect to any examples or hints given herein, any typical values stated herein and/or any information regarding the application of the device, Infineon Technologies hereby disclaims any and all warranties and liabilities of any kind, including without limitation, warranties of non-infringement of intellectual property rights of any third party.

Information For further information on technology, delivery terms and conditions and prices, please contact the nearest Infineon Technologies Office (www.infineon.com).

Warnings Due to technical requirements, components may contain dangerous substances. For information on the types in question, please contact the nearest Infineon Technologies Office. Infineon Technologies components may be used in life-support devices or systems only with the express written approval of Infineon Technologies, if a failure of such components can reasonably be expected to cause the failure of that life-support device or system or to affect the safety or effectiveness of that device or system. Life support devices or systems are intended to be implanted in the human body or to support and/or maintain and sustain and/or protect human life. If they fail, it is reasonable to assume that the health of the user or other persons may be endangered.