

Automotive BLDC Motor Drive Kit

Getting Started

Field Oriented Control (FOC) Sensorless

Device: XC2236N or XC886



Never stop thinking

Getting Started

Overview 16 Bit Motor Drive Kit



■ Included

- TLE 7184F Power Board(12V...24V/20A)
- BLDC/PMSM Motor
- AC/DC power-supply(12V/2A)
- XC2236N/XC886 drive card, capable of running FOC code
- USB drive-monitor
- CD-Rom with software & documentation
- Cables and connectors

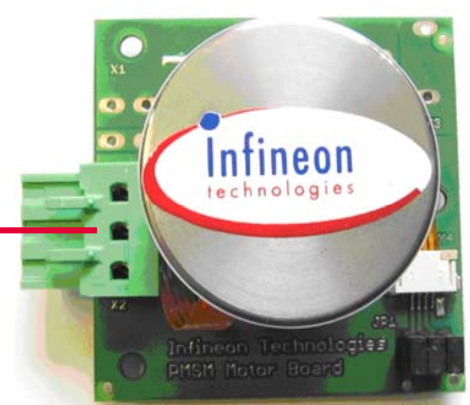
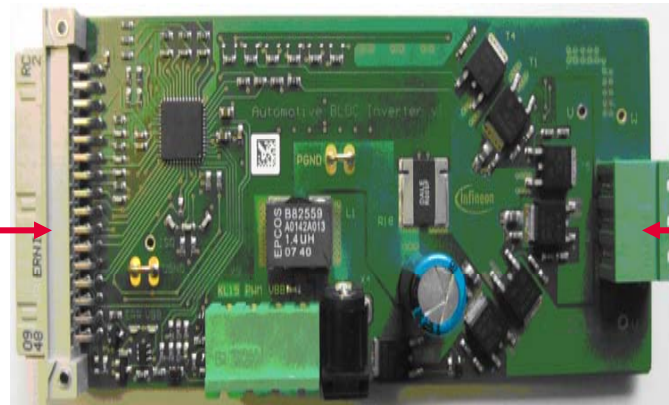
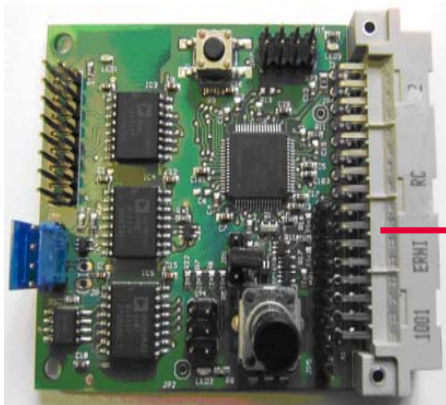
Getting Started Quick Start 1

- Connect the PMSM Motor Board with the Automotive BLDC Inverter v1.1 and this with the XC2236N/XC866 Drive Card

XC2236N/XC886

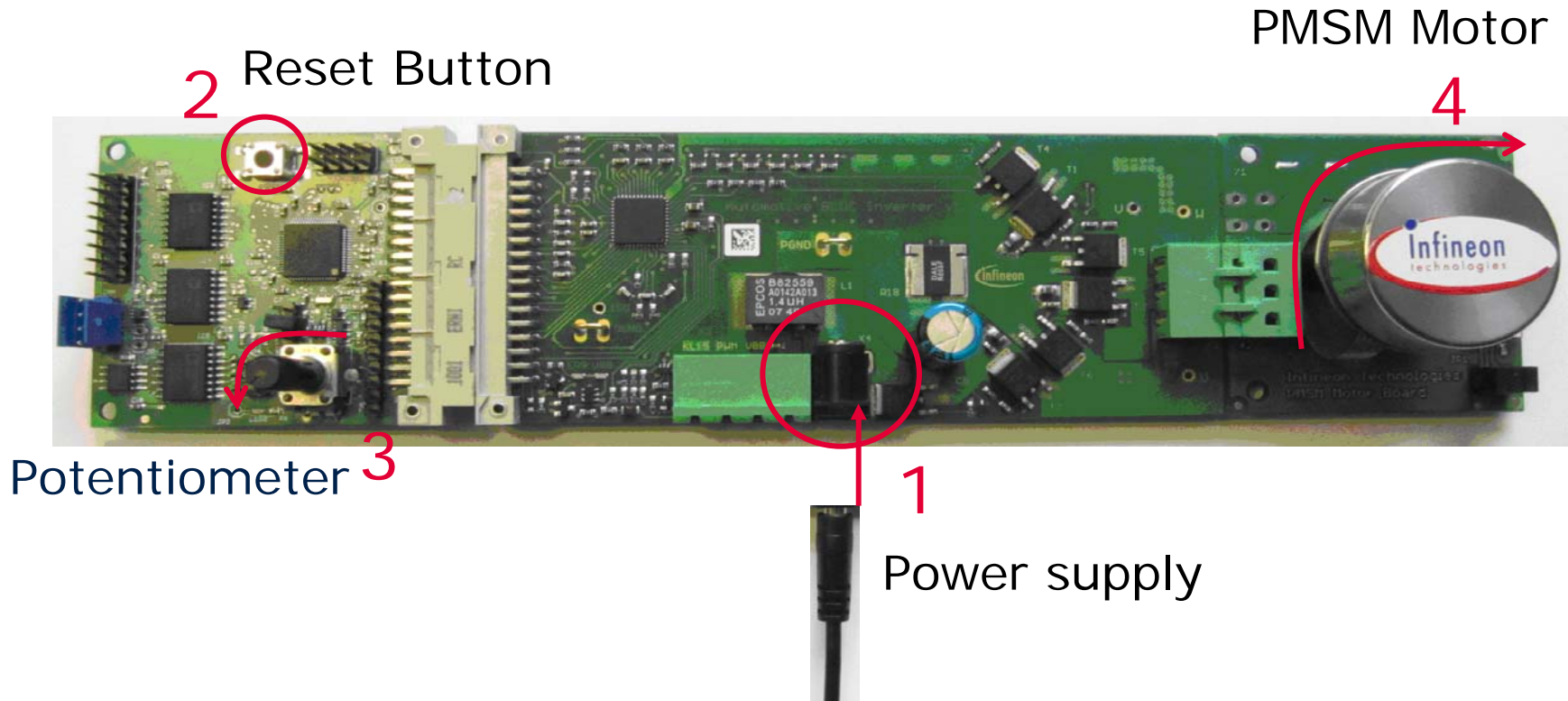
Automotive BLDC Inverter

PMSM Motor Board



- ❑ Connect the Automotive BLDC Motor Drive Kit with power
- ❑ Press the Reset Button
- ❑ Turn the Potentiometer to the Left until stop
- ❑ The PMSM Motor will start
- ❑ Turn the Potentiometer to the right, to increase speed of the PMSM Motor
- ❑ Press the Reset Button to stop the PMSM Motor

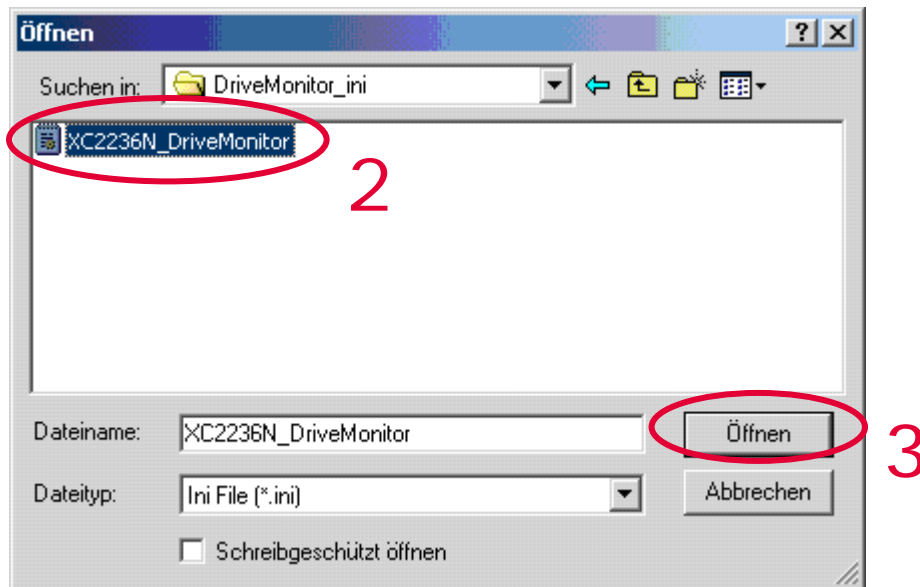
Getting Started Quick Start 1



Getting Started

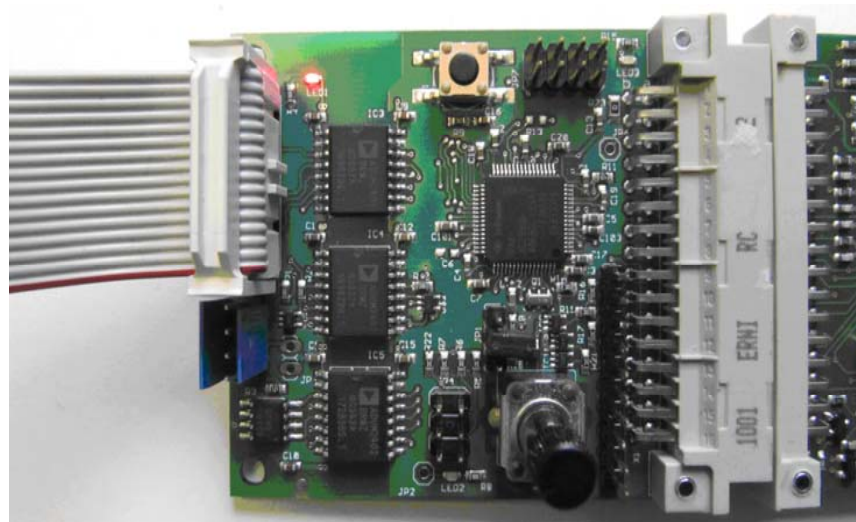
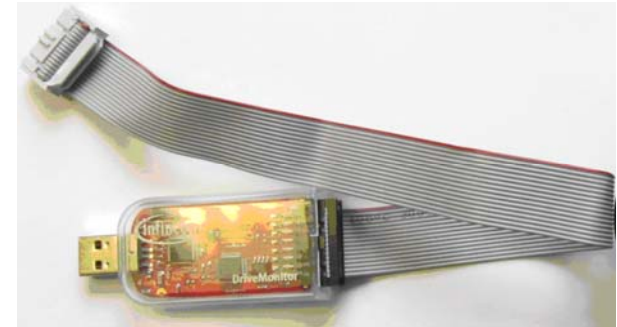
Overview Drive Monitor with USB-drive Kit

- ❑ Install the Drive Monitor V6.0
- ❑ Start the Drive Monitor and click open setting
- ❑ Open the DriveMonitor_ini File
- ❑ Click on XC2236N/XC886_DriveMonitor



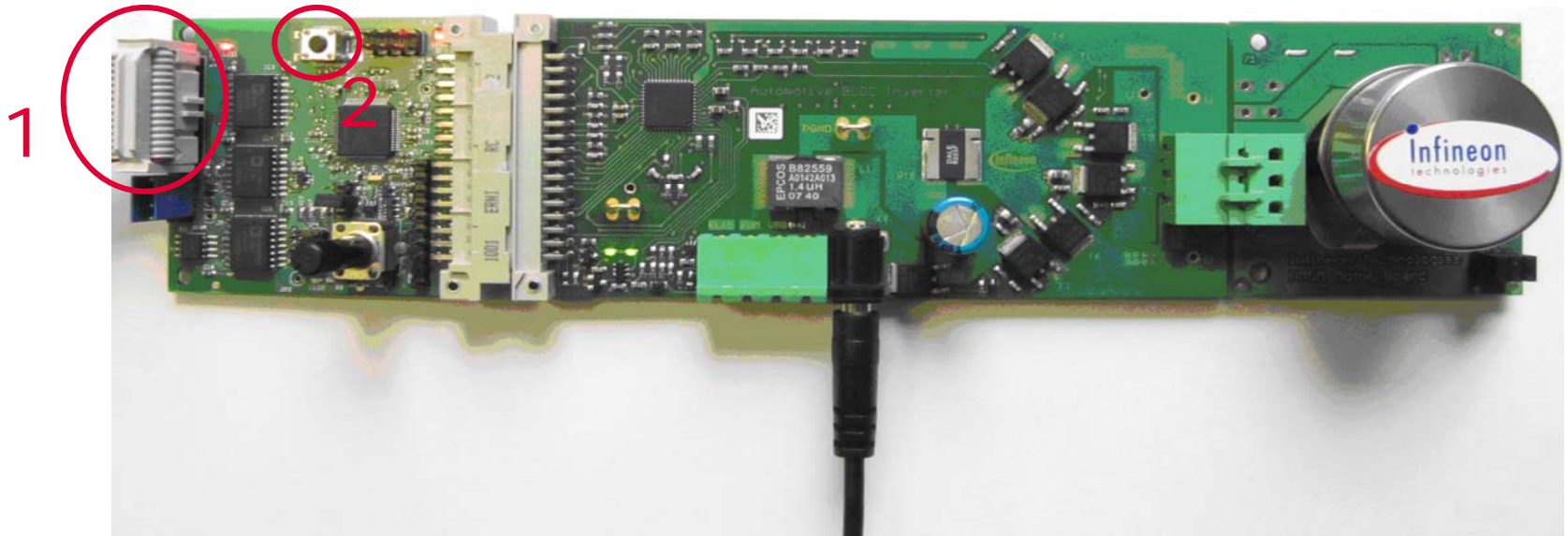
Getting Started – USB drive monitor Quick Start 2

- ❑ Connect the XC2236N/XC886 Drive Card with the USB drive-monitor
- ❑ Press the Reset Button



Getting Started – USB drive monitor Quick Start 2

USB drive-monitor Reset Button

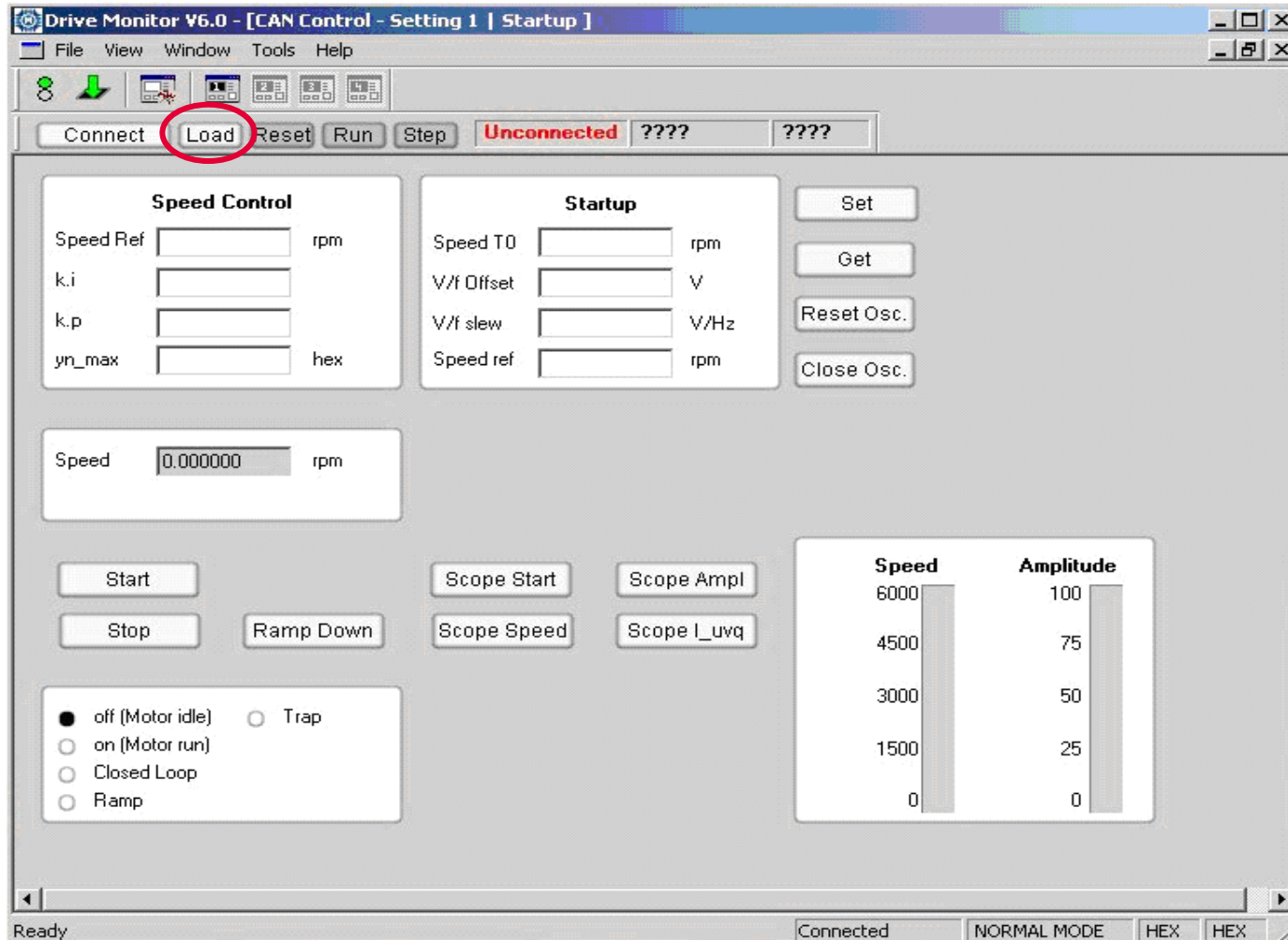


□ Click on Connect Button in Drive Monitor V6.0



Getting Started – Drive Monitor V6.0 Quick Start 2

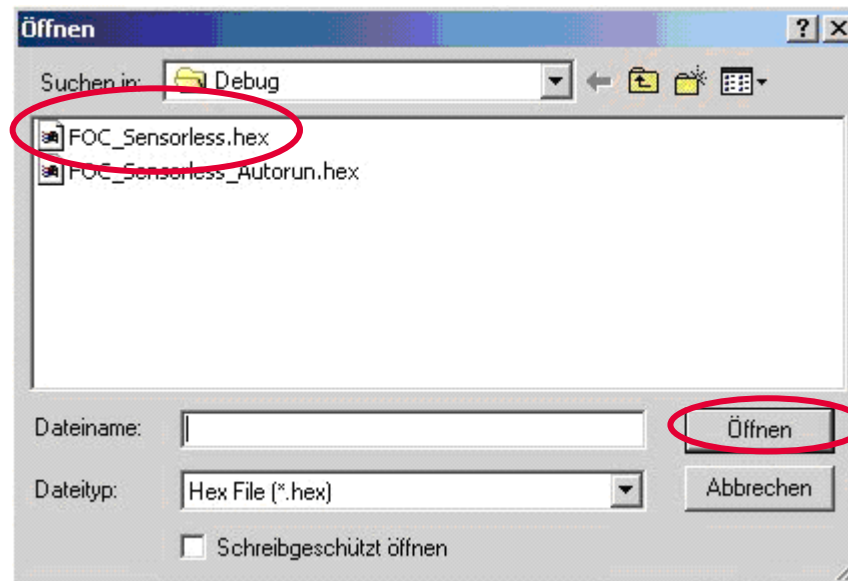
- Click on 'Load' to load the Hex File



Getting Started – Drive Monitor V6.0

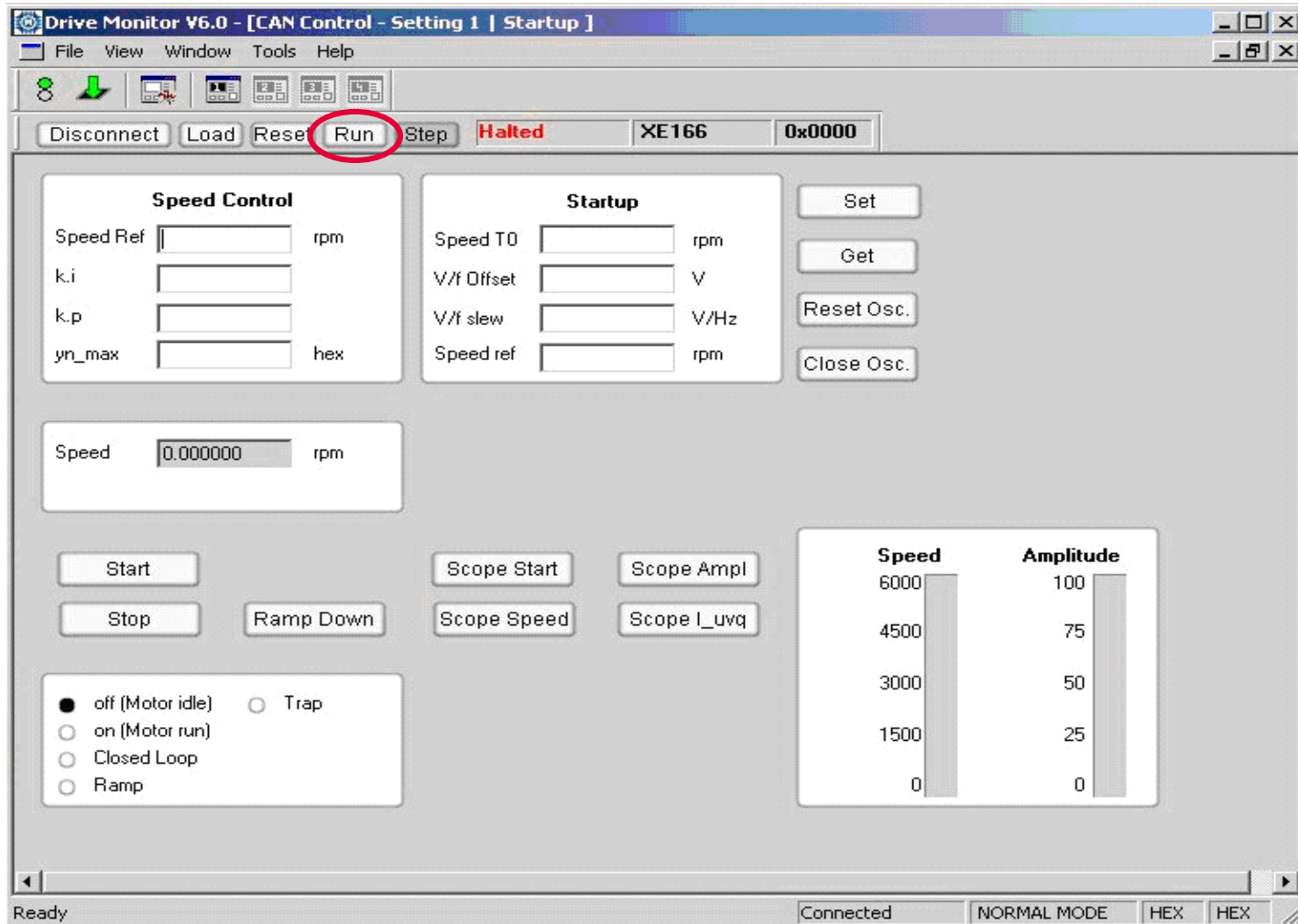
Quick Start 2

- Click on 'FOC_Sensorless.hex' to open the Hex file



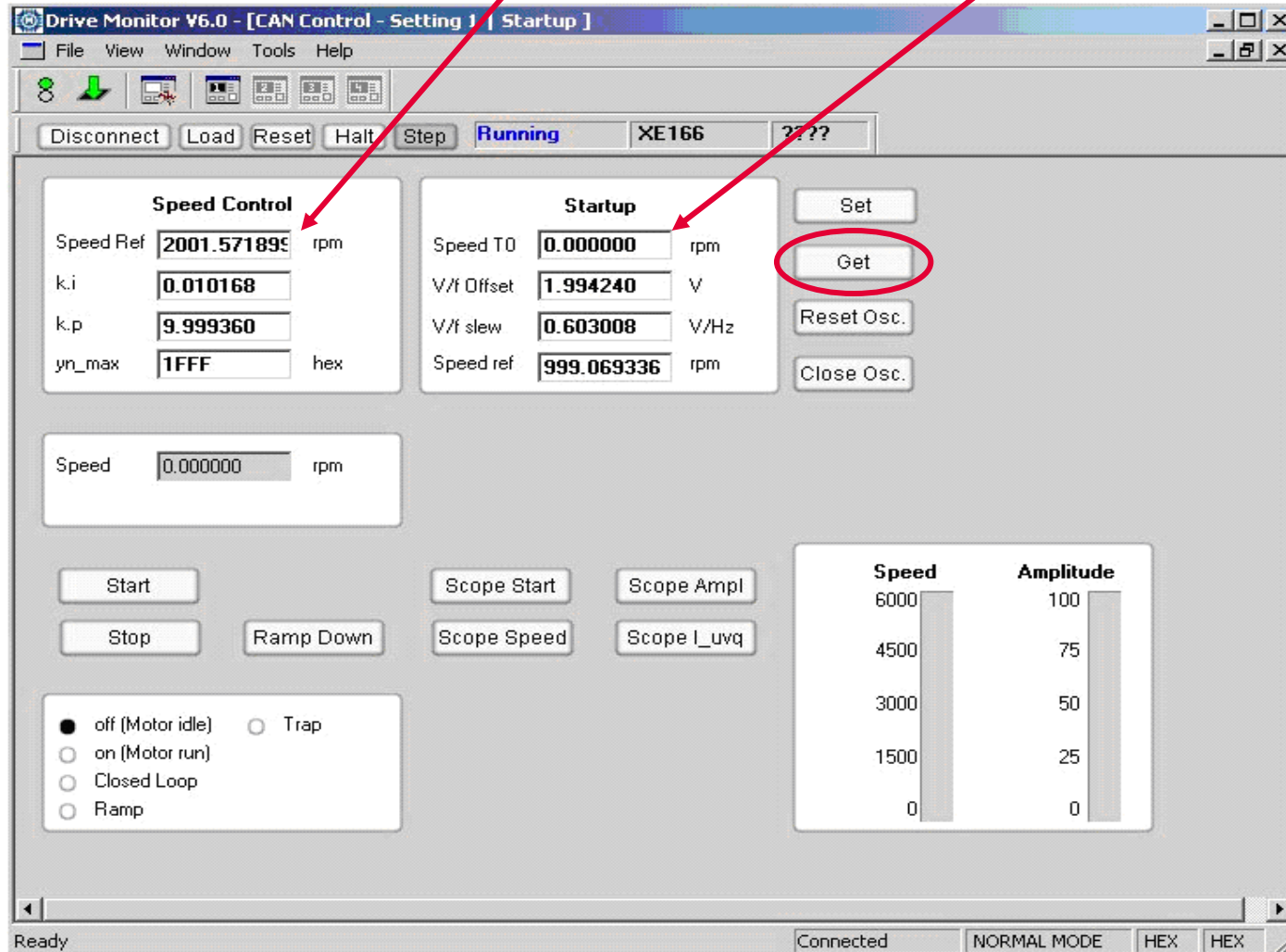
Getting Started – Drive Monitor V6.0 Quick Start 2

- Click on 'Run' to start the communication from PC to Drive Kit



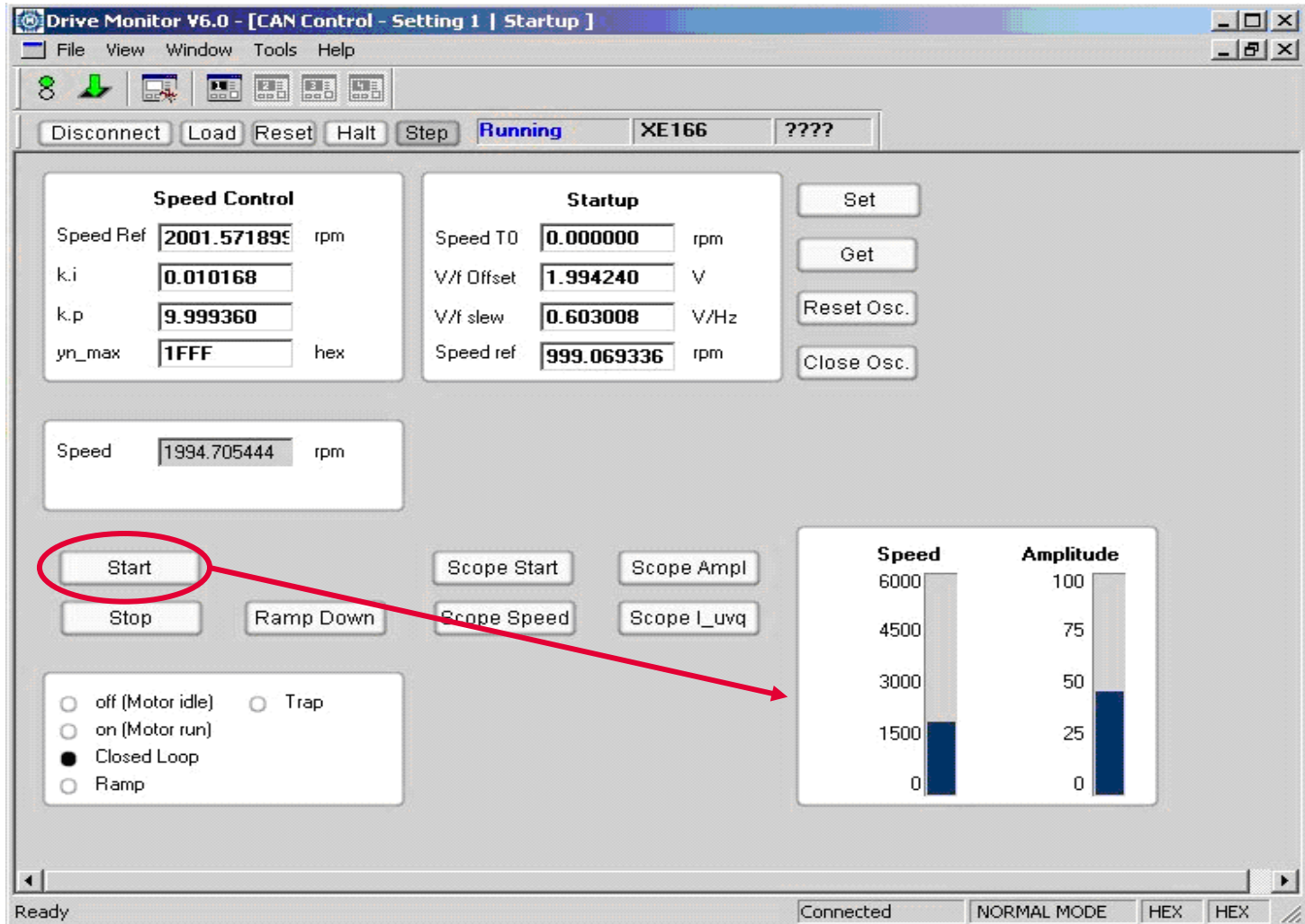
Getting Started – Drive Monitor V6.0 Quick Start 2

- Click on 'Get' to see Speed Control and Startup Information



Getting Started – Drive Monitor V6.0 Quick Start 2

- Click on 'Start' to start the Motor





We commit.
We innovate.
We partner.
We create value.



Never stop thinking