



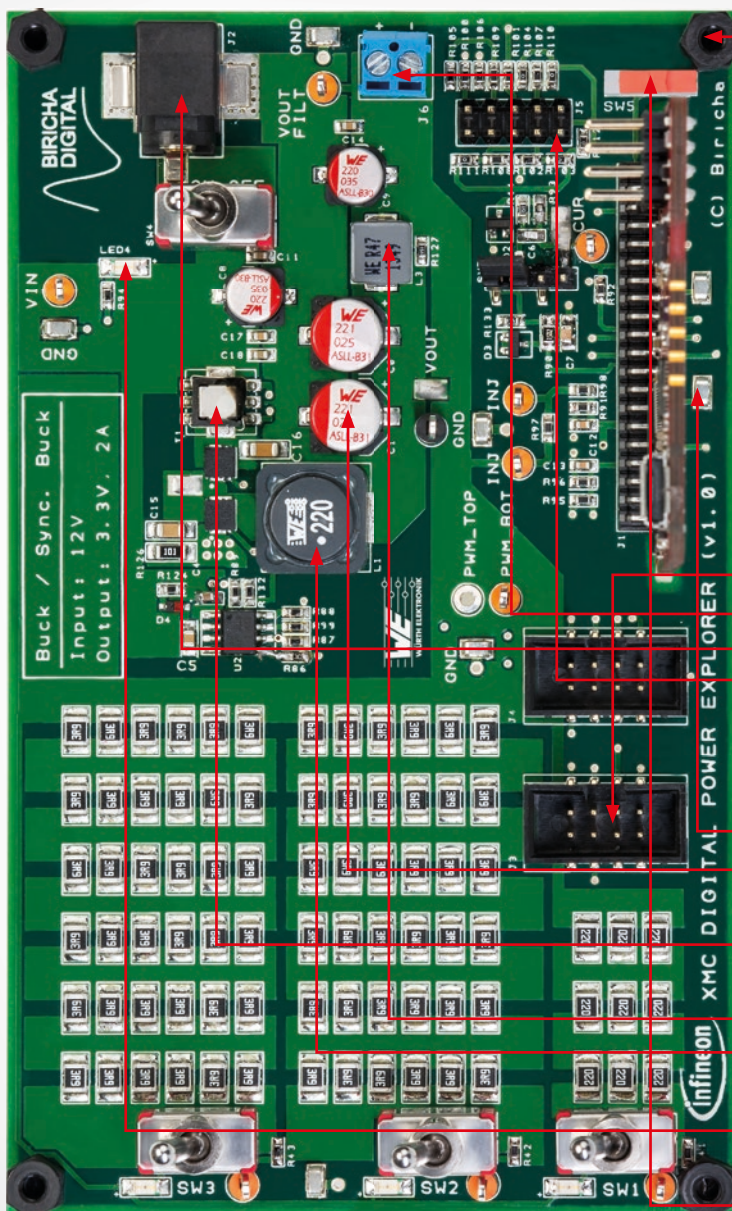
# Digital Power is calling

## XMC Digital Power Explorer Kit

### Two technical live demos per day

With Dr. Ali Shirsavar,  
Director of Biricha Digital Ltd.  
Booth 7-219 (Würth Elektronik)

Everyday during PCIM  
10:30 am & 1:30 pm  
No registration needed



#### Connectors

WR-BHD  
WR-TBL  
WR-DC  
WR-PHD

#### Assembly Products

WA-SNTI

#### Capacitors

WCAP-CSGP  
WCAP-ASLL

#### Transformers

WE-CST

#### Power Inductors

WE-LHMI  
WE-PD

#### LED

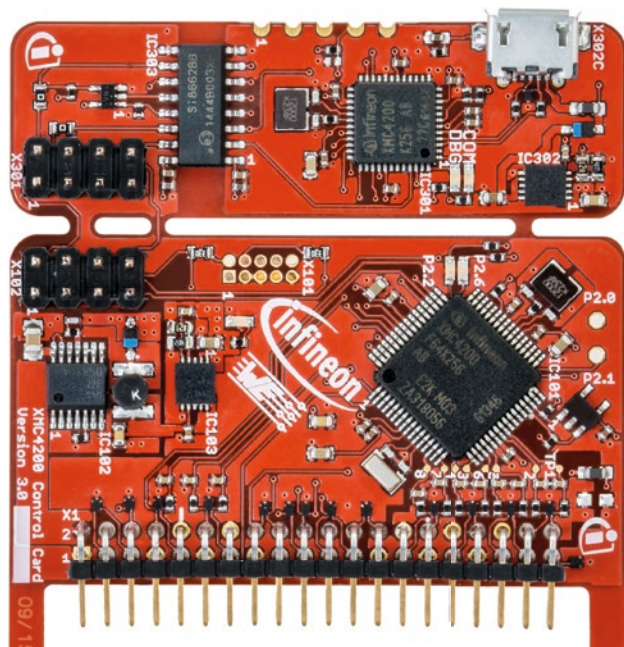
WL-SMCW

#### Switches

WS-SLTV

# Simplify digital power

With the new XMC Digital Power Explorer Kit



- Start on digital power with a complete out of the box **Infineon** solution (hardware, software & load)
- Your high-performance designs married with top-class **Würth Elektronik** components
- Professional hands-on training on digital power by **Biricha Digital** and **Infineon** coming soon

## Pre-order your kit:

[digital-power-is-calling@we-online.com](mailto:digital-power-is-calling@we-online.com)

[digital-power-is-calling@infineon.com](mailto:digital-power-is-calling@infineon.com)

## For more information please visit:

[www.we-online.com/digital-power-is-calling](http://www.we-online.com/digital-power-is-calling)

[www.infineon.com/digital-power-is-calling](http://www.infineon.com/digital-power-is-calling)

## Synchronous buck power board containing:

- BSC0924NDI Dual N-Channel OptiMOS™ MOSFETs
- IRS2011S High and Low Side Gate Driver

## 2 different Control Card options:

- XMC1300 - ARM® Cortex®-M0 MCU
- XMC4200 - ARM® Cortex®-M4F MCU



**Less carbon emissions,  
less nuclear and fossil  
energy use thanks to  
higher achievable  
efficiencies.**

## Two technical live demos per day

With Dr. Ali Shirsavar,  
Director of Biricha Digital Ltd.  
Booth 7-219 (Würth Elektronik)

**Everyday during PCIM**

**10:30 am & 1:30 pm**

**No registration needed**