

EVAL-M7-HVIGBT-PFCINV user guide

Evaluation power board with M7 connector

About this document

This user guide provides an overview of the evaluation board EVAL-M7-HVIGBT-PFCINV, including its main features, key-technical data, pin assignments, and mechanical dimensions.

The board name, EVAL-M7-HVIGBT-PFCINV, contains two different boards — EVAL-M7-HVIGBT-PFCINV1 and EVAL-M7-HVIGBT-PFCINV4. The last number 1 in the board name represents a power factor control (PFC) frequency of 100 kHz, and the number 4 represents a PFC frequency of 40 kHz. Every mention of EVAL-M7-HVIGBT-PFCINV includes both EVAL-M7-HVIGBT-PFCINV1 and EVAL-M7-HVIGBT-PFCINV4 boards unless specified otherwise.

Scope and purpose

EVAL-M7-HVIGBT-PFCINV includes Infineon's TRENCHSTOP™ IGBTs. It features and demonstrates Infineon's TRENCHSTOP™ IGBT technology for PFC and inverter circuitry in hard-switching conditions. The TRENCHSTOP™ IGBT optimizes switching and conduction losses to reach a high efficiency. The IGBTs used on this board are in D²PAK packages.

The evaluation board EVAL-M7-HVIGBT-PFCINV was developed to support users during their first steps in designing applications with running any permanent magnet motor via sensor-less sinusoidal field-oriented control.

Intended audience

This evaluation board is intended for all technical specialists who are familiar with motor control and power electronics converter systems.

Evaluation board

EVAL-M7-HVIGBT-PFCINV is meant to be used during the design-in process for evaluating and measuring the board characteristic curves, and checking datasheet specifications. It is intended only to be used under laboratory conditions.

Note: The printed circuit board (PCB) and auxiliary circuits are NOT optimized for final customer design.

Important notice

Important notice

“Evaluation Boards and Reference Boards” shall mean products embedded on a printed circuit board (PCB) for demonstration and/or evaluation purposes, which include, without limitation, demonstration, reference and evaluation boards, kits and design (collectively referred to as “Reference Board”).

Environmental conditions have been considered in the design of the Evaluation Boards and Reference Boards provided by Infineon Technologies. The design of the Evaluation Boards and Reference Boards has been tested by Infineon Technologies only as described in this document. The design is not qualified in terms of safety requirements, manufacturing and operation over the entire operating temperature range or lifetime.

The Evaluation Boards and Reference Boards provided by Infineon Technologies are subject to functional testing only under typical load conditions. Evaluation Boards and Reference Boards are not subject to the same procedures as regular products regarding returned material analysis (RMA), process change notification (PCN) and product discontinuation (PD).

Evaluation Boards and Reference Boards are not commercialized products, and are solely intended for evaluation and testing purposes. In particular, they shall not be used for reliability testing or production. The Evaluation Boards and Reference Boards may therefore not comply with CE or similar standards (including but not limited to the EMC Directive 2004/EC/108 and the EMC Act) and may not fulfill other requirements of the country in which they are operated by the customer. The customer shall ensure that all Evaluation Boards and Reference Boards will be handled in a way which is compliant with the relevant requirements and standards of the country in which they are operated.

The Evaluation Boards and Reference Boards as well as the information provided in this document are addressed only to qualified and skilled technical staff, for laboratory usage, and shall be used and managed according to the terms and conditions set forth in this document and in other related documentation supplied with the respective Evaluation Board or Reference Board.

It is the responsibility of the customer’s technical departments to evaluate the suitability of the Evaluation Boards and Reference Boards for the intended application, and to evaluate the completeness and correctness of the information provided in this document with respect to such application.

The customer is obliged to ensure that the use of the Evaluation Boards and Reference Boards does not cause any harm to persons or third party property.

The Evaluation Boards and Reference Boards and any information in this document is provided "as is" and Infineon Technologies disclaims any warranties, express or implied, including but not limited to warranties of non-infringement of third party rights and implied warranties of fitness for any purpose, or for merchantability.

Infineon Technologies shall not be responsible for any damages resulting from the use of the Evaluation Boards and Reference Boards and/or from any information provided in this document. The customer is obliged to defend, indemnify and hold Infineon Technologies harmless from and against any claims or damages arising out of or resulting from any use thereof.

Infineon Technologies reserves the right to modify this document and/or any information provided herein at any time without further notice.

Safety precautions

Safety precautions

Note: Please note the following warnings regarding the hazards associated with development systems.

Table 1 **Safety precautions**

| | |
|---|---|
|  | Warning: The DC link potential of this board is up to 1000 VDC. When measuring voltage waveforms by oscilloscope, high voltage differential probes must be used. Failure to do so may result in personal injury or death. |
|  | Warning: The evaluation or reference board contains DC bus capacitors which take time to discharge after removal of the main supply. Before working on the drive system, wait five minutes for capacitors to discharge to safe voltage levels. Failure to do so may result in personal injury or death. Darkened display LEDs are not an indication that capacitors have discharged to safe voltage levels. |
|  | Warning: The evaluation or reference board is connected to the grid input during testing. Hence, high-voltage differential probes must be used when measuring voltage waveforms by oscilloscope. Failure to do so may result in personal injury or death. Darkened display LEDs are not an indication that capacitors have discharged to safe voltage levels. |
|  | Warning: Remove or disconnect power from the drive before you disconnect or reconnect wires, or perform maintenance work. Wait five minutes after removing power to discharge the bus capacitors. Do not attempt to service the drive until the bus capacitors have discharged to zero. Failure to do so may result in personal injury or death. |
|  | Caution: The heat sink and device surfaces of the evaluation or reference board may become hot during testing. Hence, necessary precautions are required while handling the board. Failure to comply may cause injury. |
|  | Caution: Only personnel familiar with the drive, power electronics and associated machinery should plan, install, commission and subsequently service the system. Failure to comply may result in personal injury and/or equipment damage. |
|  | Caution: The evaluation or reference board contains parts and assemblies sensitive to electrostatic discharge (ESD). Electrostatic control precautions are required when installing, testing, servicing or repairing the assembly. Component damage may result if ESD control procedures are not followed. If you are not familiar with electrostatic control procedures, refer to the applicable ESD protection handbooks and guidelines. |
|  | Caution: A drive that is incorrectly applied or installed can lead to component damage or reduction in product lifetime. Wiring or application errors such as undersizing the motor, supplying an incorrect or inadequate AC supply, or excessive ambient temperatures may result in system malfunction. |
|  | Caution: The evaluation or reference board is shipped with packing materials that need to be removed prior to installation. Failure to remove all packing materials that are unnecessary for system installation may result in overheating or abnormal operating conditions. |

Table of contents

| | |
|---|-----------|
| About this document..... | 1 |
| Important notice | 2 |
| Safety precautions..... | 3 |
| Table of contents..... | 4 |
| 1 The board at a glance..... | 5 |
| 1.1 Scope of supply | 6 |
| 1.2 Block diagram..... | 7 |
| 1.3 Main features | 8 |
| 1.4 Board parameters and technical data..... | 9 |
| 2 System and functional description | 10 |
| 2.1 Getting started..... | 10 |
| 2.2 Description of the functional blocks..... | 10 |
| 2.2.1 Functional groups of EVAL-M7-HVIGBT-PFCINV..... | 10 |
| 2.2.2 Voltage feedback..... | 13 |
| 2.2.3 Temperature measured with NTC on board | 14 |
| 2.2.4 Protection function | 15 |
| 3 System design..... | 16 |
| 3.1 Schematics | 16 |
| 3.2 Layout | 18 |
| 3.3 Bill of material | 19 |
| 4 System performance | 24 |
| 4.1 dv/dt test | 24 |
| 4.2 Thermal performance test | 24 |
| 4.3 PFC test results..... | 26 |
| 4.4 Test results | 26 |
| 5 Appendices..... | 30 |
| 5.1 Abbreviations and definitions..... | 30 |
| References..... | 31 |
| Revision history..... | 32 |
| Disclaimer..... | 33 |

1 The board at a glance

The evaluation power board described in this user guide includes two boards — EVAL-M7-HVIGBT-PFCINV1 and EVAL-M7-HVIGBT-PFCINV4. The EVAL-M7-HVIGBT-PFCINV1 has a 100 kHz PFC and EVAL-M7-HVIGBT-PFCINV4 has a 40 kHz PFC. These two evaluation power boards are designed with an M7 connector and can be driven only by control boards compatible with M7 connectors. Please refer to Chapter 2.2.1 for the details of the M7 connector pinout assignment. One such control board is the EVAL-M7-D112T smart-driver board. However, other M7 connector-compatible control boards can be used as well. The two power boards use the boost PFC topology and can handle up to 400 W of output power when the inverter carrier frequency is 10 kHz with fan cooling.

The high speed TRENCHSTOP™ 5 IGBT is used on the board as the PFC switch. TRENCHSTOP™ 5 is the highest efficiency discrete 650 V IGBT technology and is outstanding in terms of efficiency and power density. It trades off between switching losses and conduction losses to achieve better system performance. The part number of the PFC IGBT used on the board is IKB15N65ETH5. It can support a frequency of up to 100 kHz with lower switching losses. The inverter IGBT used on the board is IKB06N60T which is a 600 V TRENCHSTOP™ IGBT with a soft recovery, anti-paralleled diode to minimize turn-on losses. The compromised switching losses and conduction losses can achieve higher system efficiency. The key features and functionality of this board are described in Section 1.3 of this user guide. The other chapters provide information on how to set up and use this evaluation board, and how to copy and/or modify the design according to specific user requirements.

Figure 1 shows the EVAL-M7-HVIGBT-PFCINV4 evaluation board and Figure 2 shows the EVAL-M7-HVIGBT-PFCINV1 evaluation board.

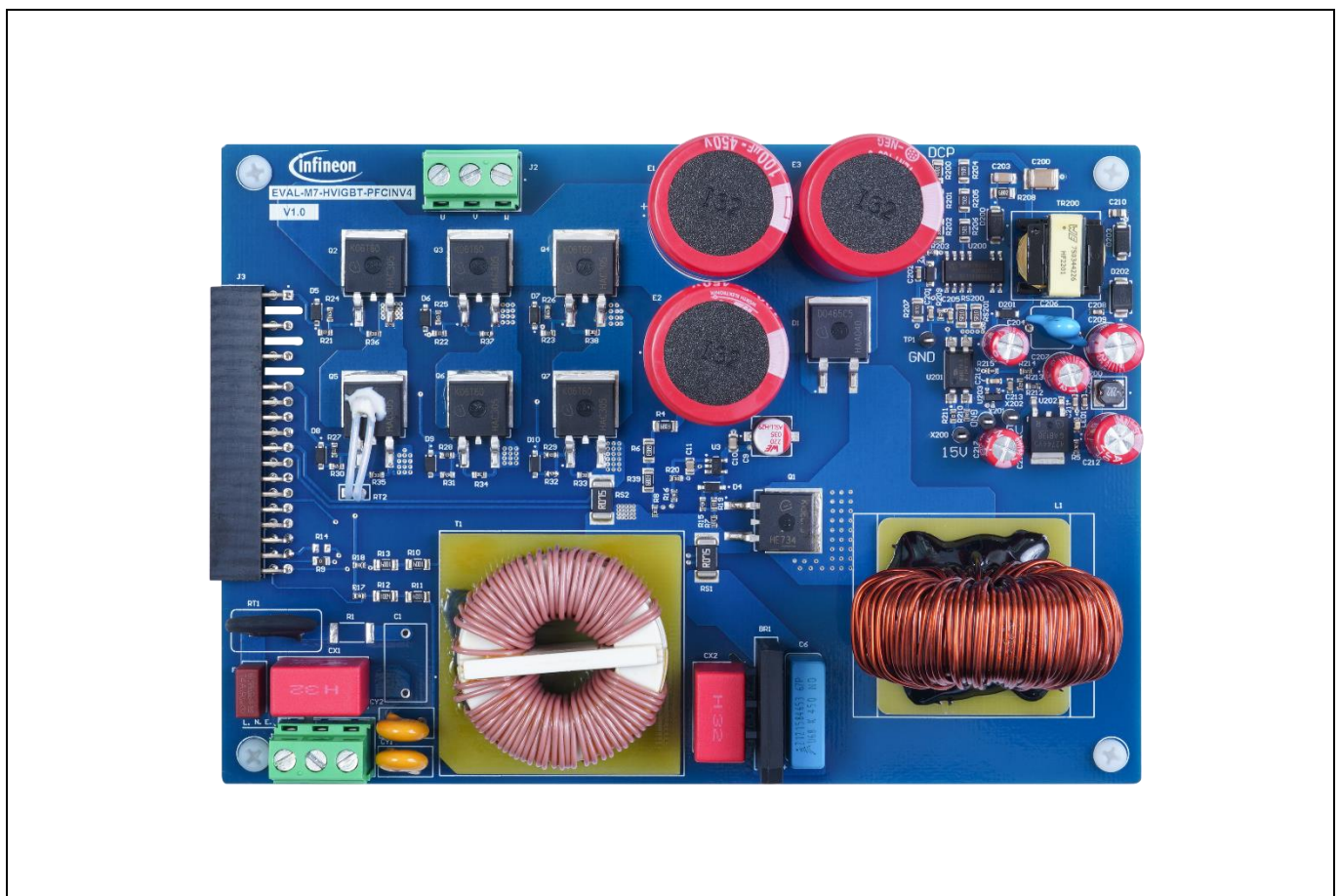


Figure 1 EVAL-M7-HVIGBT-PFCINV4 evaluation board

EVAL-M7-HVIGBT-PFCINV user guide

Evaluation power board with M7 connector

The board at a glance

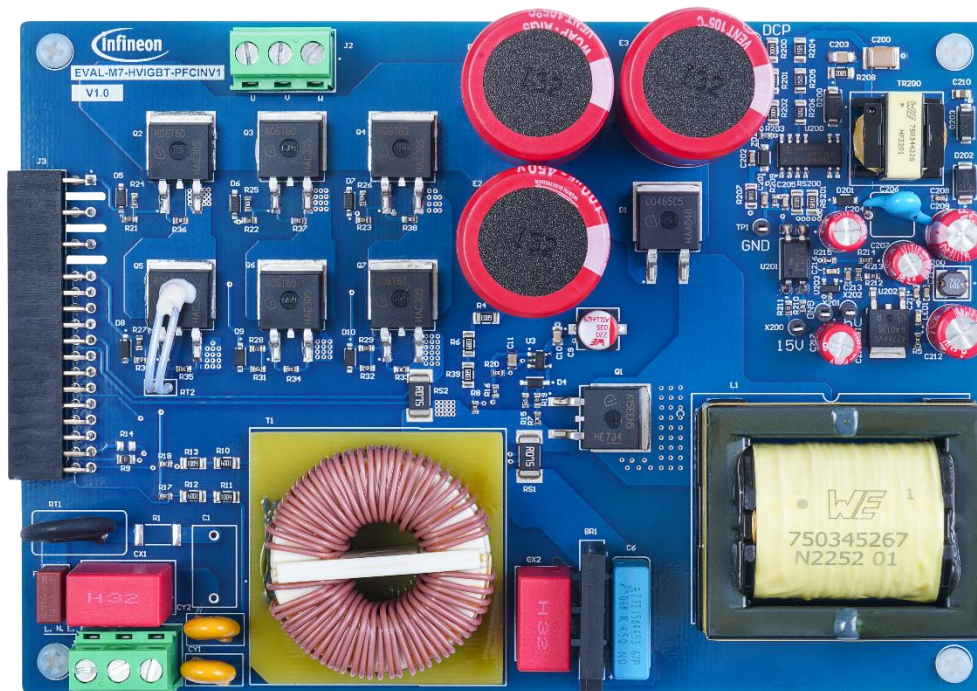


Figure 2 EVAL-M7-HVIGBT-PFCINV1 evaluation board

1.1 Scope of supply

The delivery box only contains the board as shown in Figure 1 (40 kHz PFC) or Figure 2 (100 kHz PFC). The detailed ordering information is listed in Table 1. Please select the right ordering part number based on the PFC frequency that is to be tested and verified.

The USB cable shown in Figure 4 is mandatory for tuning, but is not included with the delivery content. The iMOTION™ link connector on board is an optional tuning method in case users want to tune the board through the iMOTION™ link isolated debug probe. Please order it if you do not have it; the ordering information can be found [here](#).

Table 1 Delivery content

| Base part number | Package | Standard pack | | Orderable part number |
|--|---------|---------------|----------|-----------------------|
| | | Form | Quantity | |
| EVAL-M7-HVIGBT-PFCINV4 | | Boxed | 1 | SP005555670 |
| EVAL-M7-HVIGBT-PFCINV1 | | Boxed | 1 | SP005935281 |

The board at a glance

1.2 Block diagram

Figure 3 shows the block diagram of the EVAL-M7-HVIGBT-PFCINV power board and the connections with the example control board, EVAL-M7-D112T. IMD112T has an output capability of 5 V with a maximum output current of 10 mA. The 5 V power supply on the EVAL-M7-HVIGBT-PFCINV board is optional depending on the application's needs for more current output capability, or if the control board used by the user is without a 5 V output power supply.

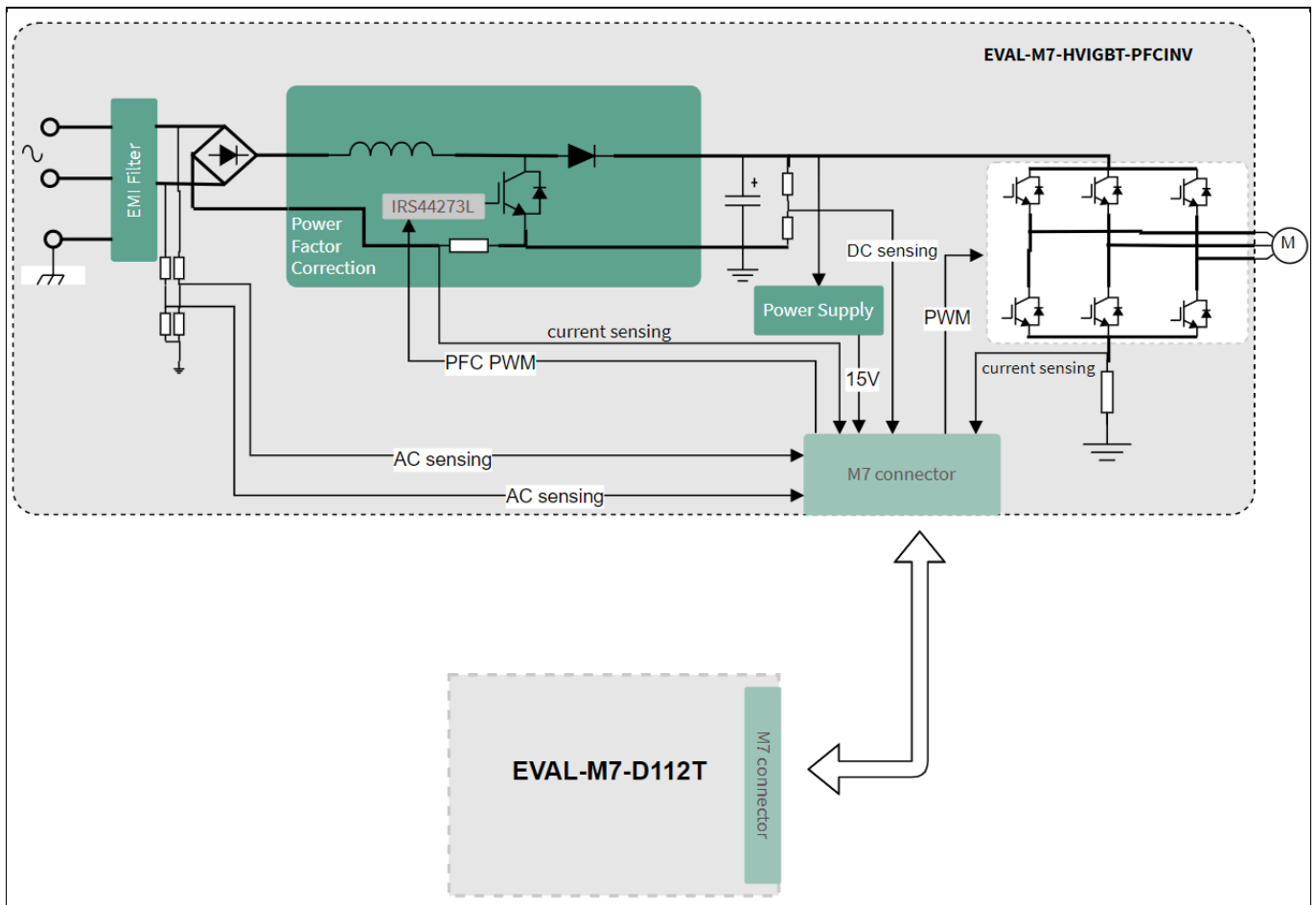


Figure 3 Block diagram of EVAL-M7-HVIGBT-PFCINV

The board at a glance

1.3 Main features

EVAL-M7-HVIGBT-PFCINV uses Infineon's TRENCHSTOP™ IGBT. This board is suitable for both permanent magnet synchronous motor (PMSM) and brushless direct current motor (BLDC) control for applications such as refrigerators, pumps, fans, and smaller general purpose motors of up to 400 W output power.

The main features of the IGBTs used on the board include:

PFC IGBT

- Best-in-class efficiency in hard switching and resonant topologies
- 650 V breakdown voltage
- Low gate charge Q_g
- The IGBT is co-packed with a full rated current RAPID 1 fast anti-parallel diode
- Maximum junction temperature of 175°C
- RoHS compliant, Pb-free plating

Inverter IGBT

- Very low $V_{CE(sat)}$ 1.5 V (typical)
- Maximum junction temperature of 175°C
- Short circuit withstand time of 5 μ s
- TRENCHSTOP™ and FieldStop technologies for 600 V applications offer:
 - Very tight parameter distribution
 - High ruggedness, temperature stable behavior
 - Very high switching speed
- Low EMI
- Pb-free plating

Main features of the EVAL-M7-HVIGBT-PFCINV evaluation power board are:

- Boost PFC topology
- Supports 40 kHz and 100 kHz PFC depending on the power board
- Direct current feedback for the both PFC and inverter
- Single-shunt current feedback configuration for the inverter
- 5 V and 15 V output power supply on the board. 5 V output is optional depending on the application's need
- PCB size of 153 mm x 107 mm, two layers, 1 oz copper

The board at a glance

1.4 Board parameters and technical data

Table 2 lists the evaluation board's parameters and technical details.

Table 2 Parameter

| Parameter | Symbol | Conditions | Value | Unit |
|-----------------------------------|------------------|--|---------|-----------------|
| Input AC voltage | V_{IN} | 220 V _{AC} input typical (50 Hz default in test iSD) | 165~260 | V _{AC} |
| 15 V output voltage | +15V | Maximum 100 mA output current | 15 ±5% | V |
| 5 V output voltage | +5V | Maximum 150 mA output current | 5 ±2% | V |
| Maximum input power | P_{IN} | 10 kHz inverter carrier frequency without any external heat sink, up to 100 kHz PFC | 200 | W |
| | | 10 kHz inverter carrier frequency with force cooling, up to 100 kHz PFC | 400 | |
| Low line maximum input power | $V_{IN(Low)}$ | 40 kHz PFC (PFC IGBT $T_{ca} = 100^{\circ}C$) | 170 | V _{AC} |
| | | 100 kHz PFC (PFC IGBT $T_{ca} = 100^{\circ}C$) | 180 | |
| Max. output phase current | I_{phase_rms} | $T_A = 20^{\circ}C$, $T_C = 100^{\circ}C$, force cooling | 2.3 | A |
| DC bus voltage | V_{DC} | DC bus capacitor has 450 V rated voltage | 380 | V |
| PFC frequency | f_{PFC} | EVAL-M7-HVIGBT-PFCINV4 | 40 | kHz |
| | | EVAL-M7-HVIGBT-PFCINV1 | 100 | |
| Max. switching inverter frequency | f_{SW} | $V_{CC} = 15 V$, the maximum switching frequency is limited by the inverter IGBT's junction temperature | 20 | kHz |

PCB characteristics

| | | | | |
|------------|--|---|----------------|----|
| Material | | 1.6 mm thickness, 1 oz copper, 2 layers | FR4 | |
| Dimensions | | Length × width × height | 153 × 107 × 45 | mm |

2 System and functional description

2.1 Getting started

The EVAL-M7-HVIGBT-PFCINV evaluation board is only a power board with boost PFC and has no control function. Therefore, it should be used with an M7 connector-compatible control board. Figure 4 is an example of the system setup with Infineon iMOTION™ smart driver IMD112T control board EVAL-M7-D112T. IMD112T is a motion control engine (MCE) with PFC control that can be implemented as a ready-to-use solution for variable speed drives. Users who would like to drive the power board with the EVAL-M7-D112T control board can find more details in Infineon user guide, UG-2023-04 [4].

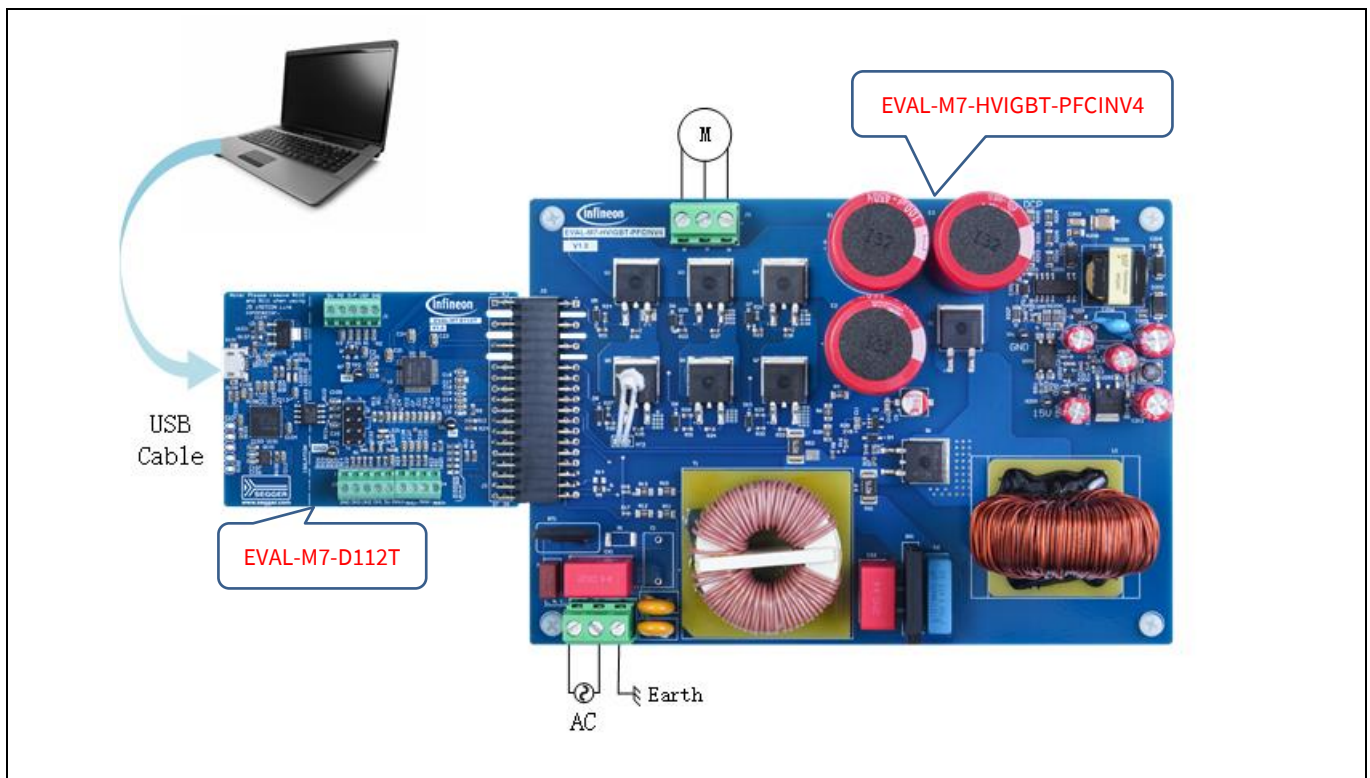


Figure 4 System setup example

2.2 Description of the functional blocks

This chapter covers the hardware design of EVAL-M7-HVIGBT-PFCINV in more detail to help users understand the functional groups of this power board and use it to easily evaluate the board performance. It also helps users develop their solutions based on the evaluation board's design.

2.2.1 Functional groups of EVAL-M7-HVIGBT-PFCINV

The functional groups of EVAL-M7-HVIGBT-PFCINV1 are shown in Figure 5. The design of EVAL-M7-HVIGBT-PFCINV4 is very similar to that of EVAL-M7-HVIGBT-PFCINV1.

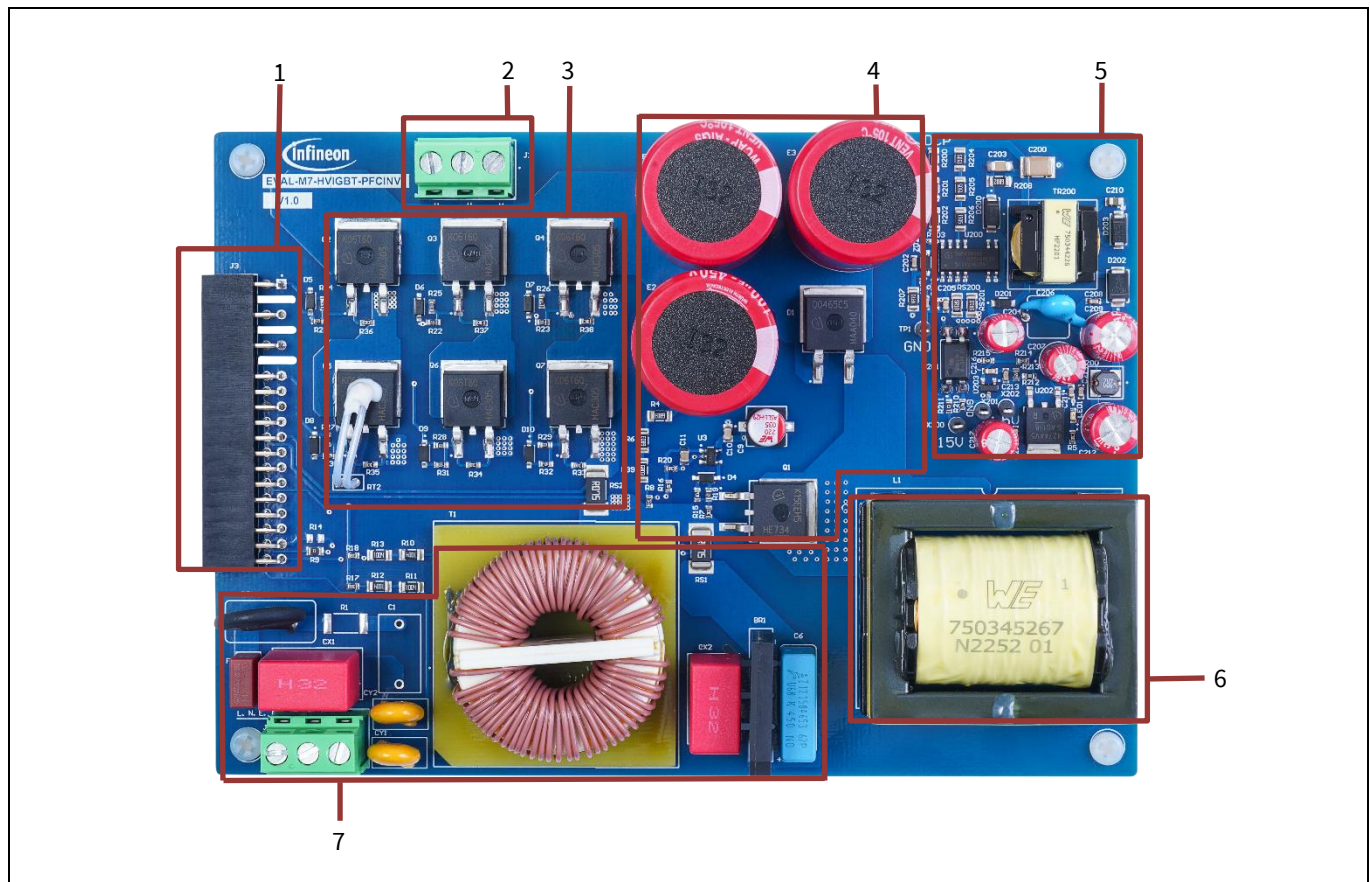


Figure 5 Functional groups

1. M7 connector
2. Inverter output
3. Inverter switches
4. PFC IGBT switch, driver, diode, and bus capacitors
5. Auxiliary power supply
6. PFC inductor
7. AC input connector, EMI filter, and rectifier bridge

There are three connectors on the EVAL-M7-HVIGBT-PFCINV board. All connector pin assignments are listed in Table 3 to Table 5.

Table 3 220 VAC input connector-J1

| Pin number | Symbol | Assignment |
|------------|--------|------------|
| 1 | L | Line |
| 2 | N | Neutral |
| 3 | E | Earth |

Table 4 Inverter output connector-J2

| Pin number | Symbol | Assignment |
|------------|--------|----------------|
| 1 | W | W phase output |
| 2 | V | V phase output |
| 3 | U | U phase output |

Table 5 M7 connector -J3

| Pin number | Symbol | Assignment |
|--------------------|--------|--|
| 1 | GUH | U phase, high-side gate PWM |
| 2 | VSV | U phase, high-side floating return |
| 3, 4, 7, 8, 11, 12 | - | Not used |
| 5 | GVH | V phase, high-side gate PWM |
| 6 | VSV | V phase, high-side floating return |
| 9 | GWH | W phase, high-side gate PWM |
| 10 | VSW | W phase, high-side floating return |
| 13 | GUL | U phase, low-side gate PWM |
| 14 | GVL | V phase, low-side gate PWM |
| 15 | GWL | W phase, low-side gate PWM |
| 16 | COM | Gate driver, low-side return |
| 17, 18, 32 | GND | Ground |
| 19 | VDD | Internal low dropout regulator (LDO) output |
| 20 | VDD1 | External VDD supply voltage |
| 21 | IU+ | U phase, current-sensing signal positive |
| 22 | IU- | U phase, current-sensing signal negative |
| 23 | IV+ | V phase, current-sensing signal positive |
| 24 | IV- | V phase, current-sensing signal negative |
| 25 | IW+ | W phase, current-sensing signal positive |
| 26 | IW- | W phase, current-sensing signal negative |
| 27 | VTH | Negative temperature coefficient (NTC) resistor output voltage |
| 28 | VDC | V _{bus} voltage sensing |
| 29 | GK | Inverter gate kill signal |
| 30 | VCC | Gate driver supply voltage |

System and functional description

| | | |
|----|-------|--|
| 31 | PFCG0 | PFC gate driving PWM 0 (not used for this board) |
| 33 | PFCG1 | PFC gate driving PWM 1 (not used for this board) |
| 34 | PFCGK | PFC gate kill signal (not used for this board) |
| 35 | IPFC+ | PFC current-sensing positive (not used for this board) |
| 36 | IPFC- | PFC current-sensing negative (not used for this board) |
| 37 | VAC1 | AC voltage-sensing input 1 (not used for this board) |
| 38 | VAC2 | AC voltage-sensing input 2 (not used for this board) |

2.2.2 Voltage feedback

The EVAL-M7-HVIGBT-PFCINV evaluation board includes AC line voltage and DC bus voltage feedback circuits. They both are voltage dividers. The DC bus voltage feedback high-side resistor is composed of three 680 k Ω resistors (R4, R6, R39) in series, and the low-side resistor (R8) is a single 13.3 k Ω resistor. AC line voltage feedback is composed of two high-side resistors (1 M Ω) and one low-side resistor (15 k Ω). Figure 6 shows the AC line and DC bus voltage feedback on the board. Please ensure that a the low-side resistor is available on this power board because unlike some other boards that have the low-side resistor on the control board, the tested control board, EVAL-M7-D112T, has no low-side resistor but only a decoupling capacitor that is located near the input pin of the IMD112T voltage feedback. Users using a different control board should remember the location of the low-side resistor and make sure they get the correct feedback voltage gain.

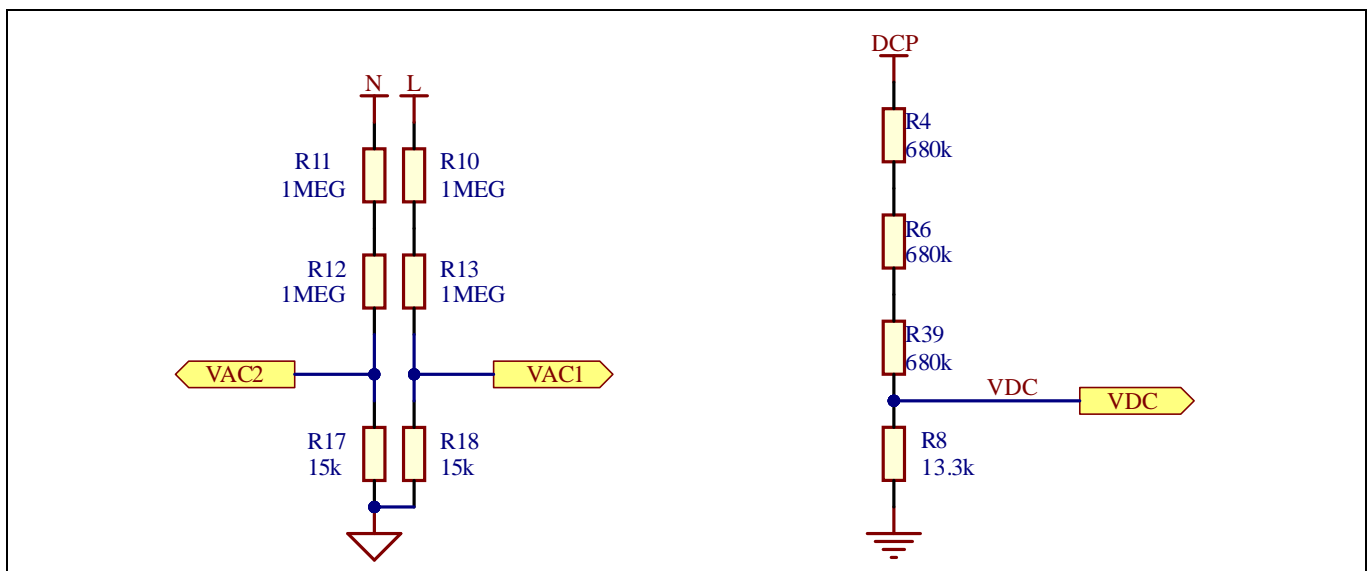


Figure 6 Voltage feedback circuitry

2.2.3 Temperature measured with NTC on board

To measure the case temperature of the IGBT switch, a negative temperature coefficient (NTC) resistor is located on the surface of the U phase, low-side IGBT on the board. NTC's placement on the board is as shown in Figure 7. The highest inverter IGBT case temperature versus the voltage output on the NTC resistor curve is shown in Figure 8. This case temperature is probably not the highest case temperature of all six inverter IGBTs, but it shows the relationship between NTC voltage and the highest case temperature. This can help users set the over-temperature threshold required to protect the system.

The pull-up resistor on the EVAL-M7-D112T control board is 4.87 k Ω . The connection between the NTC and control board is shown in Figure 7. Based on the NTC datasheet, Table 6 lists the NTC resistance values at intermediate temperatures. This will help users calculate the divider voltage (if required).

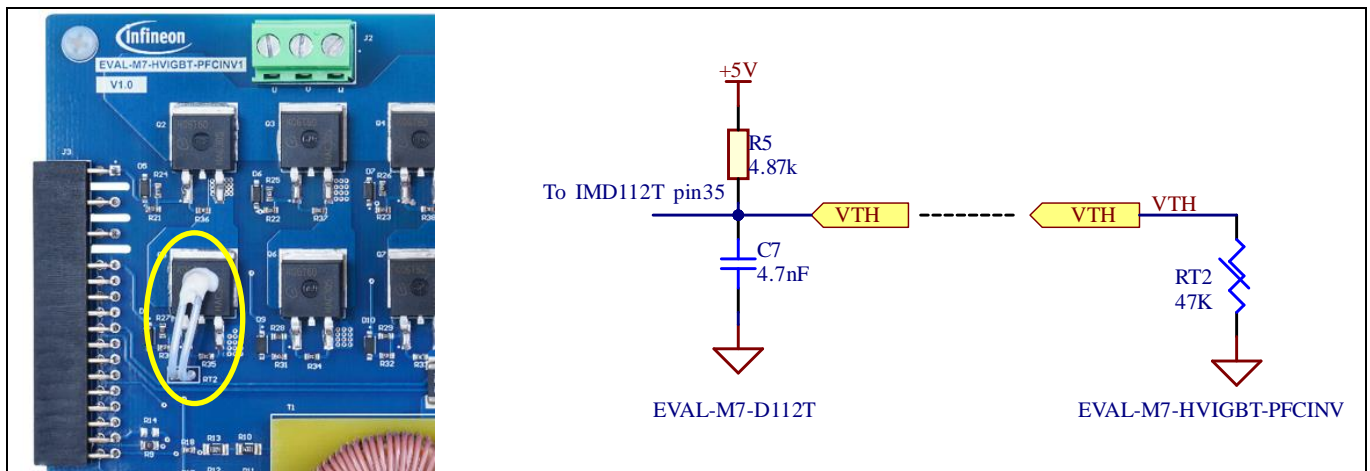


Figure 7 NTC location and voltage divider circuitry

Table 6 NTC resistance values at intermediate temperatures

| T _{OPER} (°C) | 15 | 20 | 25 | 30 | 35 | 40 | 45 | 50 | 55 | 60 |
|------------------------------|-------|-------|-------|-------|-------|-------|-------|-------|-------|-------|
| R _T (k Ω) | 74.4 | 58.95 | 47.00 | 37.71 | 30.43 | 24.70 | 20.15 | 16.53 | 13.63 | 11.30 |
| T _{OPER} (°C) | 65 | 70 | 75 | 80 | 85 | 90 | 95 | 100 | 105 | 110 |
| R _T (k Ω) | 9.404 | 7.865 | 6.607 | 5.573 | 4.721 | 4.015 | 3.427 | 2.936 | 2.525 | 2.179 |

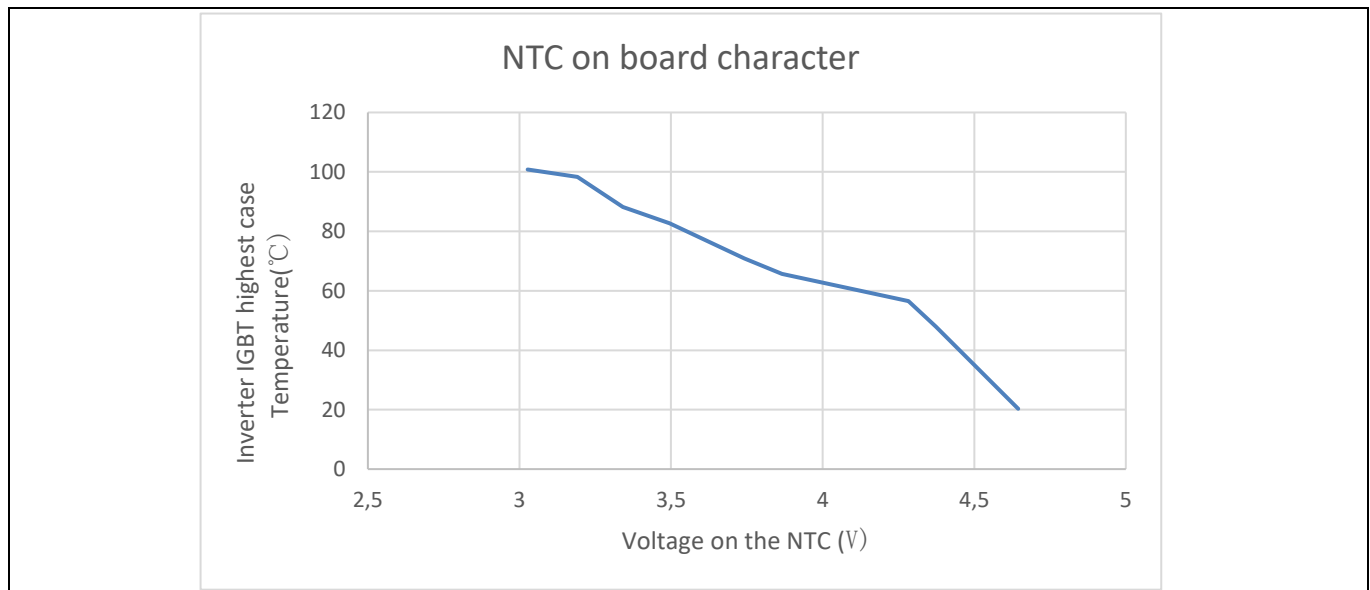


Figure 8 NTC character test on the board

2.2.4 Protection function

There is no external hardware protection function onboard for EVAL-M7-HVIGBT-PFCINV. Protection functions such as overcurrent, over and undervoltage, phase loss, and rotor lock are all carried out by the control board when EVAL-M7-D112T control board is used for evaluation. Overcurrent and overvoltage/undervoltage protection thresholds can be set using a wizard. Users can also enable or disable the protection functions such as phase loss, rotor lock, etc. All protection functions that are included in IMD112T can be set in the configuration wizard of the iSD tool. For details, please refer to the EVAL-M7-D112T control board user guide (UG-2023-04) [4] and the Getting Started with iMOTION™ Solution Designer guide [3].

3 System design

3.1 Schematics

The schematics of EVAL-M7-HVIGBT-PFCINV power board include an EMI filter, a rectifier bridge, boost PFC, inverter section, and an auxiliary power supply. Figure 9 shows the boost PFC schematics of EVAL-M7-HVIGBT-PFCINV4. Figure 10 shows the inverter section schematics and Figure 11 shows the auxiliary power supply schematics. The power supply has two outputs — 15 V and 5 V. 5 V output is optional depending on the application's need.

In the EVAL-M7-HVIGBT-PFCINV1 evaluation board schematics, the PFC inductor value is 1.5 mH with ferrite core and R19 resistor value is 120 Ω . These are the only two differences between EVAL-M7-HVIGBT-PFCINV1 and EVAL-M7-HVIGBT-PFCINV4.

The complete schematic diagrams are available on Infineon's website in the download section. Login credentials are required to download this material.

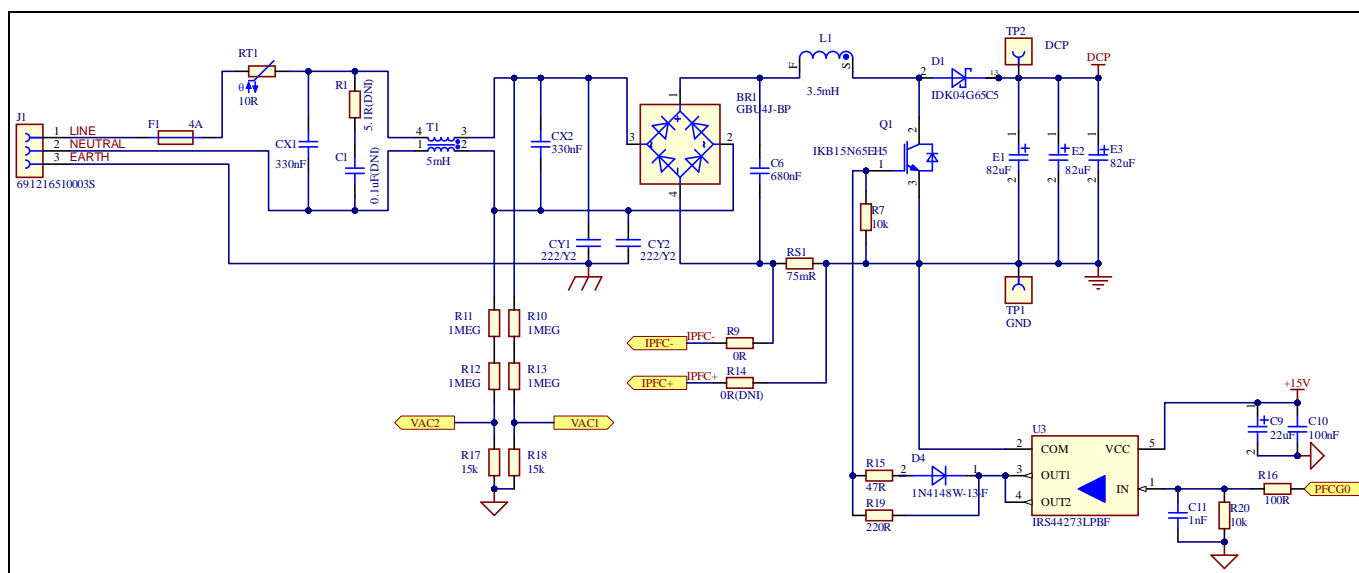


Figure 9 **Boost PFC schematics of EVAL-M7-HVIGBT-PFCINV4**

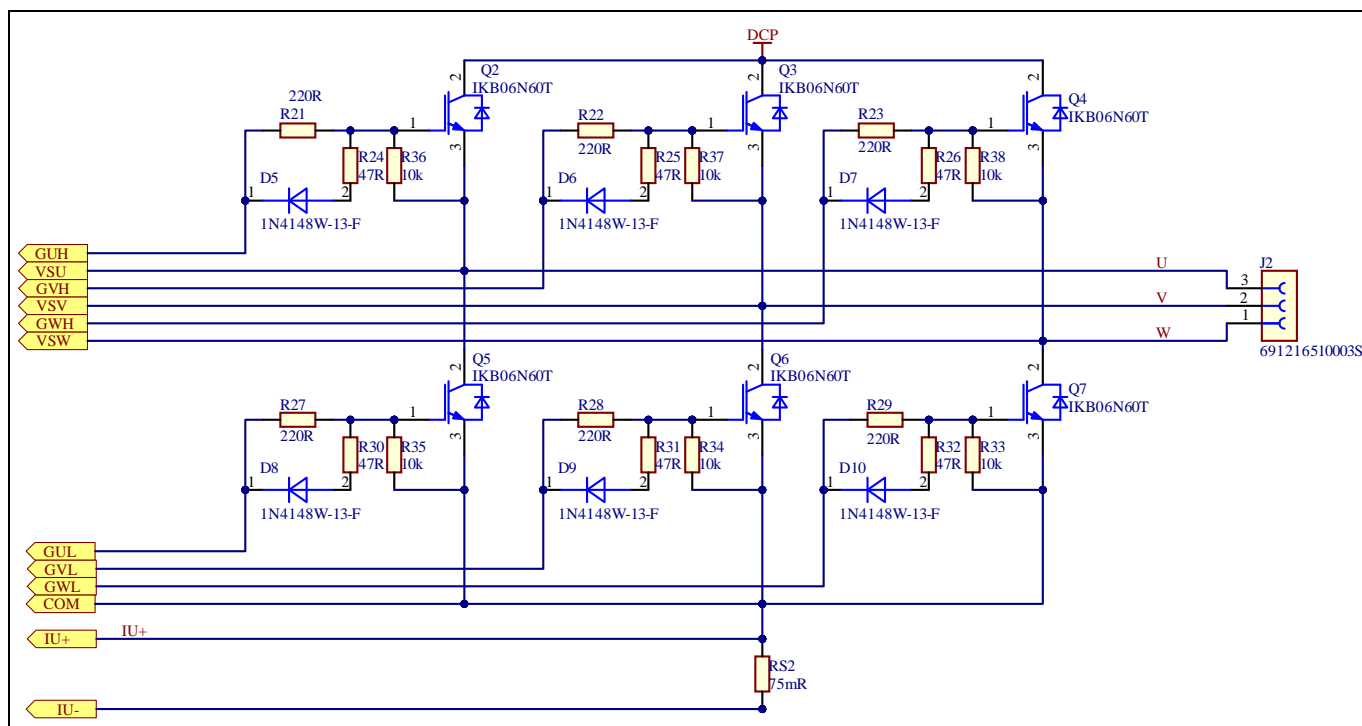


Figure 10 Inverter schematics of EVAL-M7-HVIGBT-PFCINV4

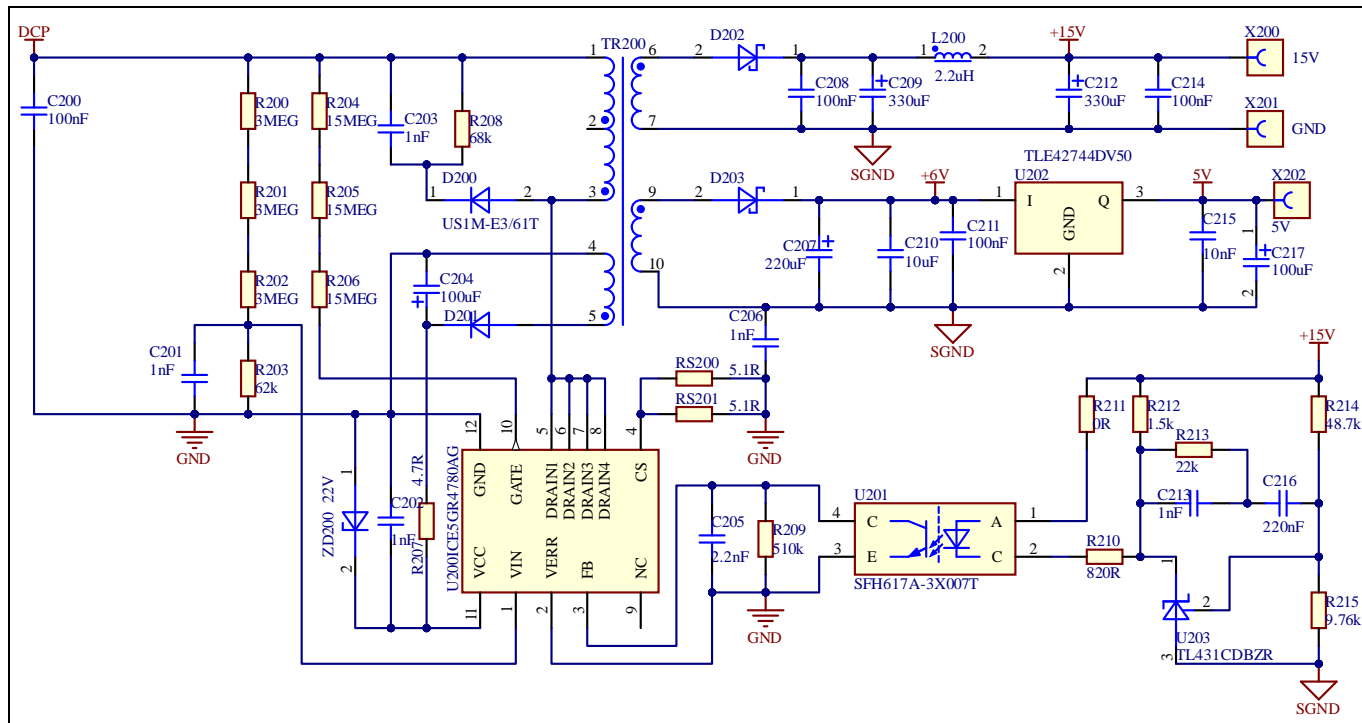


Figure 11 Auxiliary supply schematics

System design**3.2 Layout**

The EVAL-M7-HVIGBT-PFCINV board consists of two copper PCB layers. The copper thickness is 35 μm and the board size is 153 mm x 107 mm. The board material is of FR4 grade with 1.6 mm thickness. Check Infineon's website or contact Infineon's technical support team for detailed information. Gerber files are available on Infineon's website in the download section. Login credentials are required to download these files.

The layout of the top and bottom layers of the PCB are shown in Figure 12 and Figure 13. For the power board's PCB layout, users should connect the signal ground and power ground at a single common point to keep the noise low for current-feedback sensing. The PFC and inverter shunt resistor ground terminals should be connected to the common ground point, as close as possible. The current-feedback trace should be short and close to ground copper. This will ensure that less noise is introduced into the current feedback loop. Lower current-feedback noise is beneficial for PFC and motor control performance, especially for direct current-sensing control.

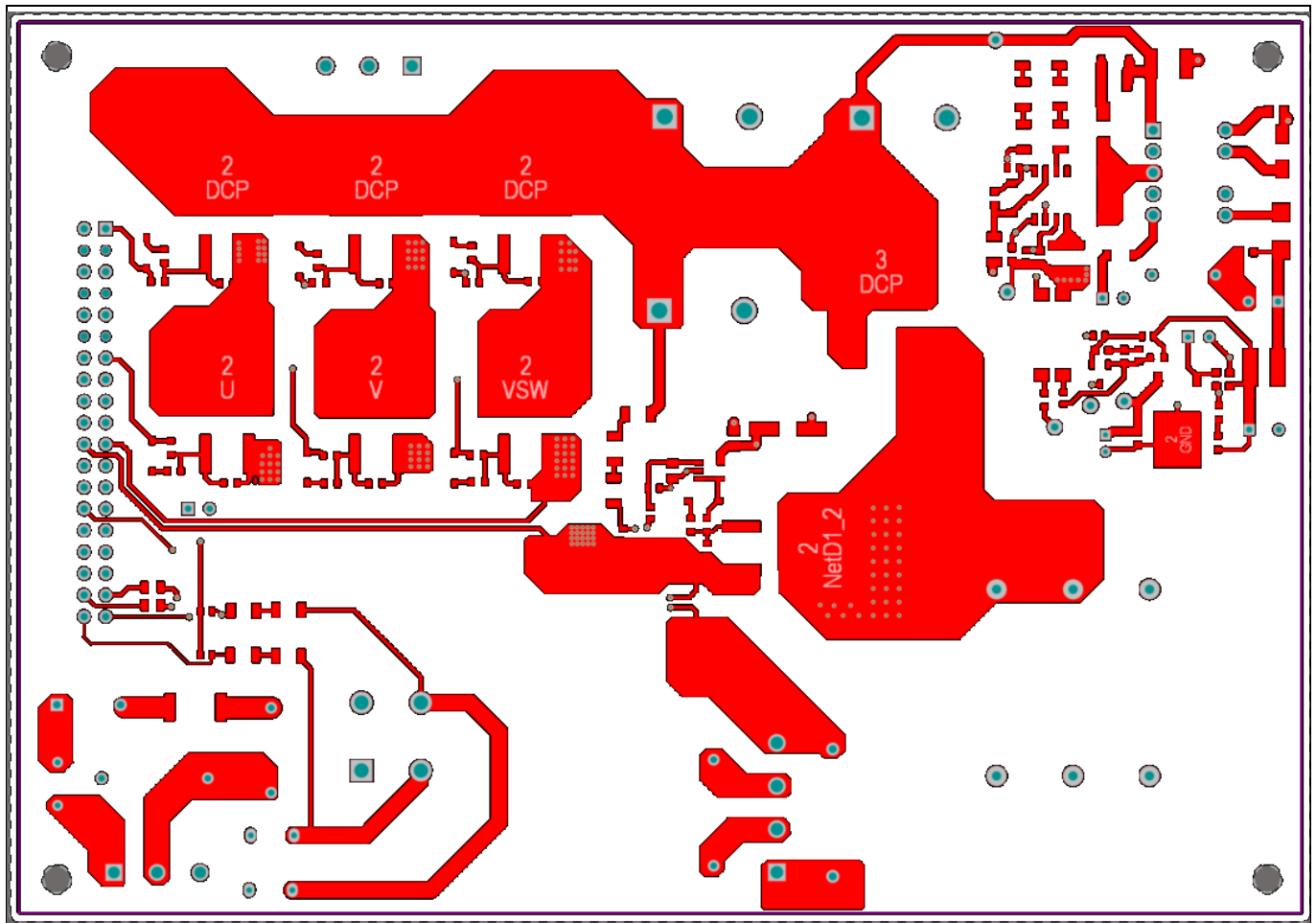


Figure 12 **Top layer**

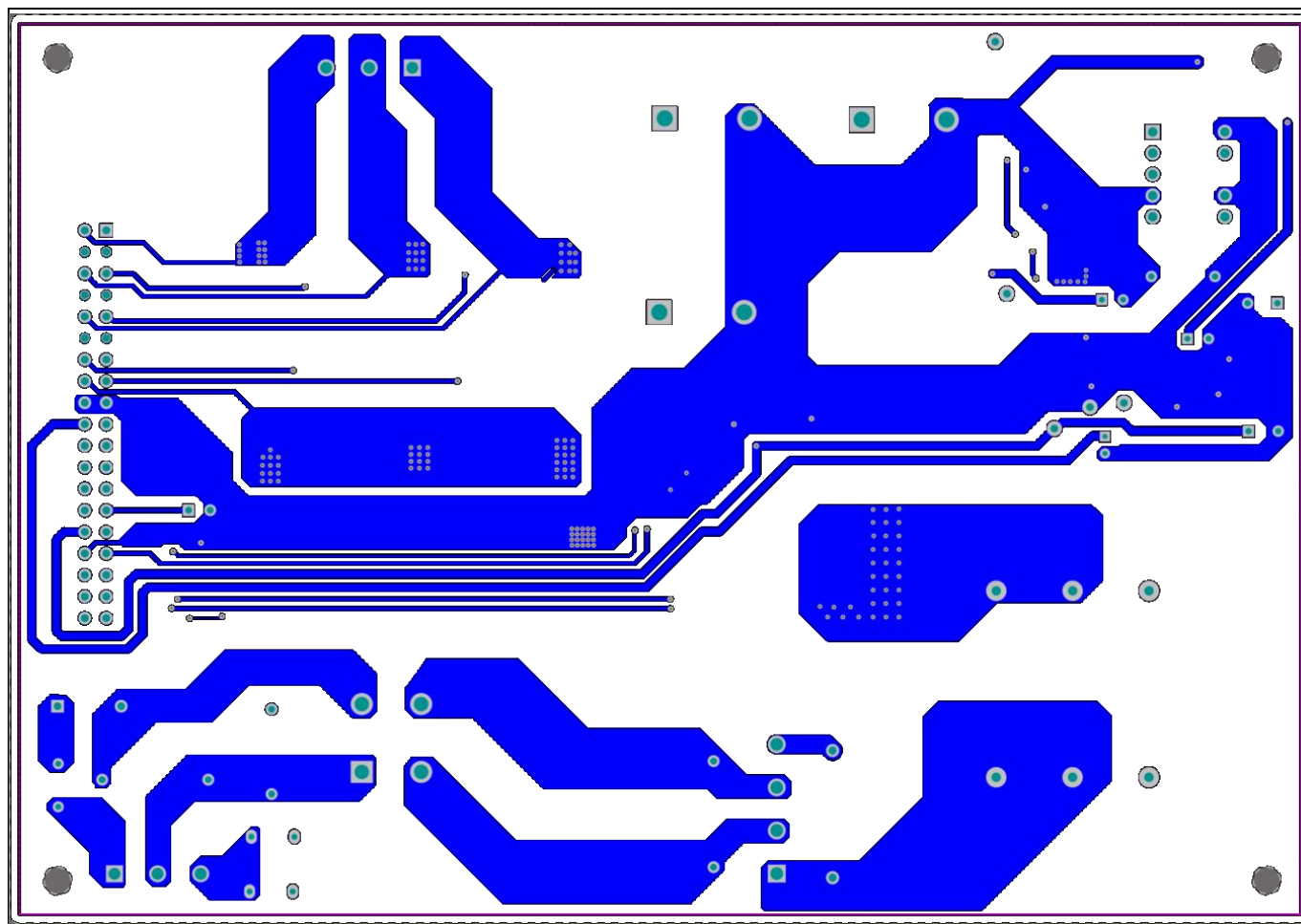


Figure 13 **Bottom layer**

3.3 Bill of material

The bill of material is available on Infineon's website in the download section. Login credentials are required to download this material. Table 7 lists the combined BOMs of the two power boards. The differences are listed in line items 34 and 51.

Table 7 **BOM of the EVAL-M7-HVIGBT-PFCINV evaluation board**

| S. No. | Ref Designator | Description | Manufacturer | Manufacturer P/N |
|--------|----------------|--|-----------------------------|------------------|
| 1 | BR1 | 4 Amp Single Phase Glass Passivated Bridge Rectifier, 600V | Micro Commercial Components | GBU4J-BP |
| 2 | C1 | CAP / FILM / 100nF / 630V / 10% / - / -40°C to 105°C / 10.00mm C X 0.60mm W 13.00mm L X 7.00mm T X 13.50mm H / THT / - | Würth Elektronik | 890334023023CS |
| 3 | C6 | CAP / FILM / 680nF / 450V / 10% / - / -55°C to 125°C / 15.00mm C X 0.80mm W 18.00mm L X 6.00mm T X 12.00mm H / THT / - | TDK Corporation | B32672P4684K000 |
| 4 | C9 | CAP / ELCO / 22uF / 35V / 20% / Aluminum electrolytic / -55°C to 105°C / 6.60mm L X 6.60mm W X 5.50mm H body / SMD / - | Würth Elektronik | 865060543003 |

EVAL-M7-HVIGBT-PFCINV user guide

Evaluation power board with M7 connector



System design

| S. No. | Ref Designator | Description | Manufacturer | Manufacturer P/N |
|--------|----------------|---|------------------|----------------------|
| 5 | C10 | CAP / CERA / 100nF / 50V / 10% / X7R (EIA) / -55 °C to 125°C / 0805(2012) / SMD / - | TDK Corporation | C2012X7R1H104K085A A |
| 6 | C11 | CAP / CERA / 1nF / 50V / 5% / X7R (EIA) / -55°C to 125°C / 0805(2012) / SMD / - | MuRata | GRM216R71H102JA01 |
| 7 | C200 | CAP / CERA / 100nF / 630V / 10% / X7R (EIA) / -55 °C to 125°C / 1812 / SMD / - | Würth Elektronik | 885342211006 |
| 8 | C201 | CAP / CERA / 1nF / 16V / 10% / X7R (EIA) / -55°C to 125°C / 0603(1608) / SMD / - | Kemet | C0603C102K4RACTU |
| 9 | C202, C213 | CAP / CERA / 1nF / 25V / 5% / C0G (EIA) / NP0 / -55°C to 125°C / 0603(1608) / SMD / -, CAP / CERA / 1nF / 25V / 5% / C0G (EIA) / NP0 / -55°C to 125 °C / 0603(1608) / SMD / - | MuRata | GRM1885C1E102JA01 |
| 10 | C203 | CAP / CERA / 1nF / 630V / 10% / X7R (EIA) / -55°C to 125°C / 1206(3216) / SMD / - | MuRata | GRM31BR72J102KW01 |
| 11 | C204 | CAP / ELCO / 100uF / 35V / 20% / Aluminum electrolytic / -40°C to 85°C / 2.50mm C X 0.50mm W 6.30mm Dia X 12.50mm H / - / - | Würth Elektronik | 860010573007 |
| 12 | C205 | CAP / CERA / 2.2nF / 50V / 10% / X5R (EIA) / -55 °C to 85°C / 0603(1608) / SMD / - | MuRata | GRM188R61H222KA01 |
| 13 | C206 | CAP / CERA / 1nF / / 20% / E (JIS) / -40°C to 125 °C / 7.50mm C X 0.60mm W 7.00mm L X 7.00mm T X 10.00mm H / THT / - | MuRata | DE6E3KJ102MN3A |
| 14 | C207 | CAP / ELCO / 220uF / 16V / 20% / Aluminum electrolytic / -40°C to 85°C / 2.50mm C X 0.50mm W 6.30mm Dia X 12.50mm H / THT / - | Würth Elektronik | 860010373010 |
| 15 | C208, C214 | CAP / CERA / 100nF / 50V / 10% / X7R (EIA) / -55 °C to 125°C / 603(1608) / SMD / - | AVX | 06035C104K4Z2A |
| 16 | C209, C212 | CAP / ELCO / 330uF / 25V / 20% / Aluminum electrolytic / -40°C to 85°C / 3.50mm C X 0.60mm W 8.00mm Dia X 13.00mm H / THT / - | Würth Elektronik | 860010474012 |
| 17 | C210 | CAP / CERA / 10uF / 16V / 10% / X5R (EIA) / -55°C to 85°C / 0805(2012) / SMD / - | MuRata | GRM219R61C106KA73 |
| 18 | C211 | CAP / CERA / 100nF / 50V / 10% / X7R (EIA) / -55 °C to 125°C / 0603 / SMD / - | AVX | 06035C104KAT2A |
| 19 | C215 | CAP / CERA / 10nF / 50V / 10% / X7R (EIA) / -55°C to 125°C / 0603 / SMD / - | AVX | 06035C103K4Z2A |
| 20 | C216 | CAP / CERA / 220nF / 25V / 10% / X5R (EIA) / -55 °C to 85°C / 0603(1608) / SMD / - | MuRata | GRM188R61E224KA88 |
| 21 | C217 | CAP / ELCO / 100uF / 16V / 20% / Aluminum electrolytic / -40°C to 85°C / 2.00mm C X 0.50mm W 5.00mm Dia X 12.50mm H / THT / - | Würth Elektronik | 860010473007 |
| 22 | CX1, CX2 | CAP / FILM / 330nF / 630V / 10% / MKT (Metallized Polyester) / -40°C to 105°C / 12.50mm C X 0.60mm W 15.00mm L X 8.50mm T X 14.50mm H / THT / - | Würth Elektronik | 890324024003CS |
| 23 | CY1, CY2 | CAP CER 2.2nF 300VAC Y2 RADIAL | Vishay | VY2222M35Y5US6TV5 |

EVAL-M7-HVIGBT-PFCINV user guide

Evaluation power board with M7 connector



System design

| S. No. | Ref Designator | Description | Manufacturer | Manufacturer P/N |
|--------|-----------------------------|--|---|------------------|
| 24 | D1 | Schottky Diode, 5th Generation ThinQ SiC | Infineon Technologies | IDK04G65C5 |
| 25 | D4, D5, D6, D7, D8, D9, D10 | Surface Mount Fast Switching Diode | Diodes Incorporated | 1N4148W-13-F |
| 26 | D200 | Surface Mount Ultrafast Rectifier 1.0A/1000V | Vishay | US1M-E3/61T |
| 27 | D201 | Super-fast Recovery Diode, VR 200 V, IF 1 A | ROHM Semiconductors | RF071MM2STR |
| 28 | D202 | High Voltage Surface-Mount Schottky Rectifier, VRRM 100V | Vishay | SS2H10-E3/52T |
| 29 | D203 | Surface-Mount Schottky Barrier Rectifier, VRRM 45V | Vishay | BYS10-45-E3/TR3 |
| 30 | E1, E2, E3 | CAP / ELCO / 82uF / 450V / 20% / - / -25°C to 105°C / 10.00mm C X 1.50mm W 22.00mm Dia X 38.00mm H body / THT / - | Würth Elektronik | 861021483005 |
| 31 | F1 | RES / STD / - / - / - / -55°C to 125°C / 5.08mm C X 0.60mm W 8.50mm L X 4.00mm T X 7.90mm H / - / - | Hollyland (China) Electronics Technology Corp., Ltd | 5EF-040H |
| 32 | J1, J2 | Horizontal Cable Entry with Rising Cage Clamp - WR-TBL, 3Pins | Würth Elektronik | 691216510003S |
| 33 | J3 | The part can be named as M7-38-F, Connector, 38 pins, 2.54 mm pitch, Board to Board, Right Angle | Sullins | PPTC192LJBN-RC |
| 34 | L1 | IND / STD / 3.5m mH / 4 A, (40 kHz PFC) | Poco | PI221435V1 |
| | | IND/STD/1.5 mH/4 A, (100 kHz PFC) | Würth Elektronik | 750345267 |
| 35 | L200 | IND / STD / 2.2uH / 2.5A / 20% / -40°C to 125°C / 71mR / SMD / Inductor, SMD; 2-Leads, 4.50 mm L X 4 mm W X 3.50 mm H body / SMD / - | Würth Elektronik | 744773022 |
| 36 | LED1 | Standard 0603 SMD LED, 2.1V Red, Luminous Intensity 63 mcd | Vishay | TLMS1100-GS08 |
| 37 | Q1 | TRENCHSTOP 5highspeedswitchingIGBTcopackedwithfullrated currentRAPID1antiparalleldiode | Infineon Technologies | IKB15N65EH5 |
| 38 | Q2, Q3, Q4, Q5, Q6, Q7 | Low Loss DuoPack: IGBT in TRENCHSTOP™ and FieldStop technology with soft, fast recovery anti-parallel Emitter Controlled HE diode | Infineon Technologies | IKB06N60T |
| 39 | R1 | RES / STD / 5.1R / 1W / 1% / 100ppm/K / -55°C to 155°C / 2512(6332) / SMD / - | Vishay | CRCW25125R10FK |
| 40 | R4, R6, R39 | RES / STD / 680k / 250mW / 1% / 100ppm/K / -55°C to 155°C / 1206(3216) / SMD / - | Vishay | CRCW1206680KFK |
| 41 | R5, R33, R34, R35, | RES / STD / 10k / 100mW / 1% / 100ppm/K / -55°C to 155°C / 0603 / SMD / - | Yageo | RC0603FR-0710KL |

EVAL-M7-HVIGBT-PFCINV user guide

Evaluation power board with M7 connector



System design

| S. No. | Ref Designator | Description | Manufacturer | Manufacturer P/N |
|--------|-----------------------------------|---|--------------|------------------|
| | R36, R37, R38 | | | |
| 42 | R7, R20 | RES / STD / 10k / 100mW / 1% / 100ppm/K / -55 °C to 155°C / 0603 / SMD / - | Vishay | CRCW060310K0FK |
| 43 | R8 | RES / STD / 13.3k / 100mW / 1% / 100ppm/K / -55°C to 155°C / 0603(1608) / SMD / - | Vishay | CRCW060313K3FK |
| 44 | R9 | RES / STD / 0R / 125mW / 0R / 0ppm/K / -55°C to 155°C / 0805 / SMD / - | Yageo | RC0805JR-070RL |
| 45 | R14 | RES / STD / 0R / 125mW / 0R / 0ppm/K / -55°C to 155°C / 0805 / SMD / - | Yageo | RC0805JR-070RL |
| 46 | R10, R11, R12, R13 | RES / STD / 1MEG / 250mW / 1% / 100ppm/K / -55°C to 155°C / 1206 / SMD / - | Vishay | CRCW12061M00FK |
| 47 | R15, R24, R25, R26, R30, R31, R32 | RES / STD / 47R / 100mW / 1% / 100ppm/K / -55 °C to 155°C / 0603 / SMD / - | Yageo | RC0603FR-0747RL |
| 48 | R16 | RES / STD / 100R / 100mW / 1% / 100ppm/K / -55 °C to 155°C / 0603 / SMD / - | Vishay | CRCW0603100RFK |
| 49 | R17, R18 | RES / STD / 15k / 100mW / 1% / 100ppm/K / -55 °C to 155°C / 0603(1608) / SMD / - | Vishay | CRCW060315K0FK |
| 50 | R21, R22, R23, R27, R28, R29 | RES / STD / 220R / 100mW / 1% / 100ppm/K / -55 °C to 155°C / 0603 / SMD / - | Yageo | RC0603FR-07220RL |
| 51 | R19 | RES / STD / 220R / 100mW / 1% / 100ppm/K / -55 °C to 155°C / 0603 / SMD / - (40 kHz PFC only) | Yageo | RC0603FR-07220RL |
| | | RES / STD / 120R / 100mW / 1% / 100ppm/K / -55 °C to 155°C / 0603(1608) / SMD / - (100 kHz PFC only) | Yageo | RC0603FR-07120RL |
| 52 | R200, R201, R202 | RES / STD / 3MEG / 250mW / 1% / 100ppm/K / -55°C to 155°C / 1206 / SMD / - | Vishay | CRCW12063M00FK |
| 53 | R203 | RES / STD / 62k / 100mW / 1% / 100ppm/K / -55 °C to 155°C / 0603 / SMD / - | Vishay | CRCW060362K0FK |
| 54 | R204, R205, R206 | RES / STD / 15MEG / 250mW / 5% / 200ppm/K / -55°C to 155°C / 1206 / SMD / - | Yageo | RC1206JR-0715ML |
| 55 | R207 | RES / STD / 4.7R / 250mW / 1% / 100ppm/K / -55 °C to 155°C / 1206 / SMD / - | Vishay | CRCW12064R70FK |
| 56 | R208 | RES / STD / 68k / 250mW / 1% / 100ppm/K / -55 °C to 155°C / 1206 / SMD / - | Vishay | CRCW120668K0FK |
| 57 | R209 | RES / STD / 510k / 100mW / 1% / 100ppm/K / -55 °C to 155°C / 0603 / SMD / - | Vishay | CRCW0603510KFK |
| 58 | R210 | RES / STD / 820R / 100mW / 1% / 100ppm/K / -55 °C to 155°C / 0603 / SMD / - | Vishay | CRCW0603820RFK |
| 59 | R211 | RES / STD / 0R / 100mW / 0R / 0ppm/K / -55°C to 155°C / 0603 / SMD / - | Yageo | RC0603JR-070RL |
| 60 | R212 | RES / STD / 1.5k / 100mW / 1% / 100ppm/K / -55 °C to 155°C / 0603 / SMD / - | Yageo | RC0603FR-071K5L |

System design

| S. No. | Ref Designator | Description | Manufacturer | Manufacturer P/N |
|--------|----------------------------|--|----------------------------|--------------------|
| 61 | R213 | RES / STD / 22k / 100mW / 1% / 100ppm/K / -55 °C to 155 °C / 0603 / SMD / - | Vishay | CRCW060322K0FK |
| 62 | R214 | RES / STD / 48.7k / 100mW / 1% / 100ppm/K / -55 °C to 155 °C / 0603 / SMD / - | Vishay | CRCW060348K7FK |
| 63 | R215 | RES / STD / 9.76k / 100mW / 1% / 100ppm/K / -55 °C to 155 °C / 0603 / SMD / - | Vishay | CRCW06039K76FK |
| 64 | RS1, RS2 | RES / STD / 75mR / 3W / 1% / 50ppm/K / -55 °C to 170 °C / 2512 / SMD / - | Bourns | CRA2512-FZ-R075ELF |
| 65 | RS200, RS201 | RES / STD / 5.1R / 250mW / 1% / 100ppm/K / -55 °C to 155 °C / 1206 / SMD / - | Vishay | CRCW12065R10FK |
| 66 | RT1 | RES / NTC / 10R / 3.1W / 20% / - / - / - / THT / - | Epcos | B57237S0100M000 |
| 67 | RT2 | NTC Thermistors, Radial Leaded, Standard Precision | Vishay | NTCLE100E3 |
| 68 | T1 | IND / STD / 5mH / - / - / -40 °C to 125 °C / 100mR / T40 / Inductor, THT, 7.00 mm pitch, 4 pin, 40.64 mm L X 40.64 mm W X 25 mm H body / - / - | Würth Elektronik | 750345266 |
| 69 | TP1, TP2, X200, X201, X202 | Test Point THT, Black | Keystone Electronics Corp. | 5001 |
| 70 | TR200 | Flyback Transformer, Offline aux SMPS for server, PC power applications | Würth Elektronik | 750344226 |
| 71 | U3 | Single Low-Side Driver IC, Application General Purpose Gate Driver, DC-DC converters, Plasma display panel (PDP) applications | Infineon Technologies | IRS44273LPBF |
| 72 | U200 | Fixed Frequency 700 V/800 V CoolSET, lowest standby power <100 mW | Infineon Technologies | ICE5GR4780AG |
| 73 | U201 | Optocoupler, Phototransistor Output, High Reliability, 5300 VRMS, 110 °C Rated | Vishay | SFH617A-3X007T |
| 74 | U202 | Low Dropout Linear Voltage Regulator, 5.0 V Output | Infineon Technologies | TLE42744DV50 |
| 75 | U203 | Precision Programmable Reference | Texas Instruments | TL431CDBZR |
| 76 | ZD200 | Zener Diode with Surge Current Specification | Vishay | BZD27C22P-HE3-08 |

4 System performance

4.1 dv/dt test

For motor control systems, dv/dt is important. The motor application requires the switching dv/dt to be below 5 V/ns. This can improve motor-control reliability, but lower dv/dt will also increase the IGBT's switching losses. This is a trade-off between switching losses and dv/dt. For the PFC turn-on dv/dt, there is a different gate resistor to balance the dv/dt and switching losses for EVAL-M7-HVIGBT-PFCONV4 and EVAL-M7-HVIGBT-PFCINV1. The inverter turn-on dv/dt of the EVAL-M7-HVIGBT-PFCINV board is measured at 1.58 V/ns. Figure 14 shows the inverter dv/dt test waveform.

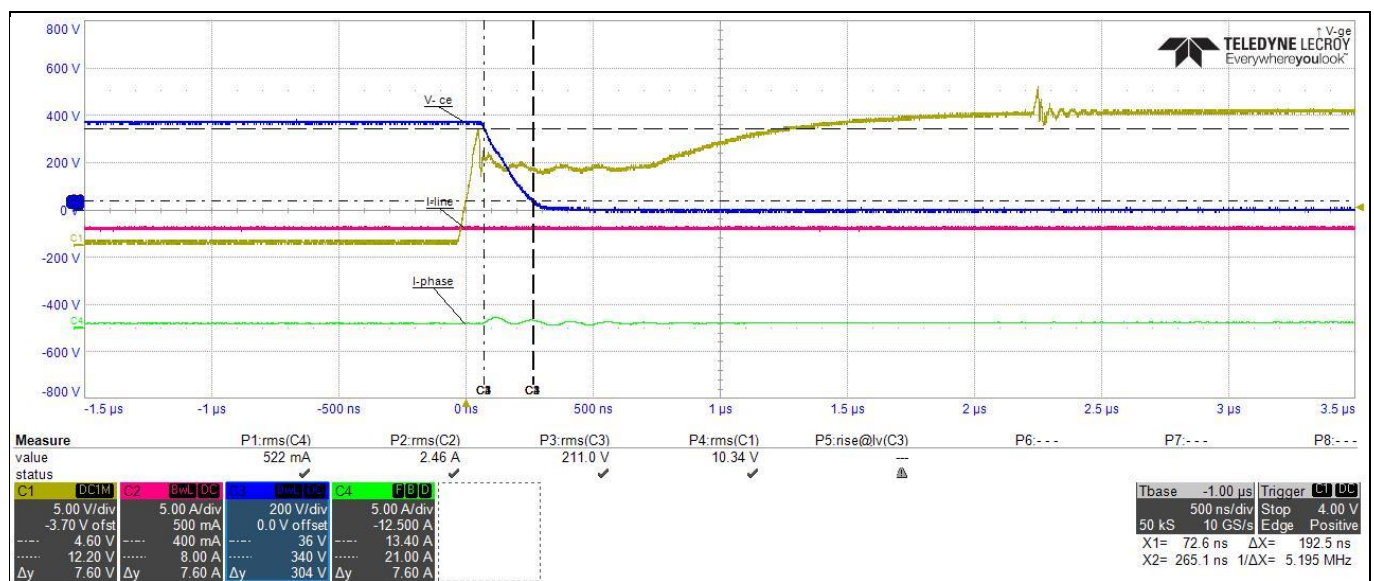


Figure 14 Inverter turn-on dv/dt

4.2 Thermal performance test

For thermal performance test of the EVAL-M7-HVIGBT-PFCINV power board, the input power and motor-phase current were measured when the IGBT case temperature of either PFC IGBT or Inverter IGBT reached 100°C. The power board was tested at different carrier frequencies. The inverter PWM's frequency range was from 6 kHz to 15 kHz under testing conditions. Note that this power board can be run for up to 20 kHz, but the output power capability will drop down accordingly. Figure 16 shows a thermal test snapshot at 220 VAC input, 6 kHz carrier frequency of inverter, and 400 W input power with force cooling. At this test condition, the hot point of the IGBT on the power board was 72.5°C for 40 kHz PFC and 87.3°C for 100 kHz PFC at 23°C room temperature.

The force cooling fan, SJ4020HD2, with 24 VDC input and 0.18 A current was placed as shown in Figure 15. The wind speed over the PFC IGBT was about 1.00 m/s.

EVAL-M7-HVIGBT-PFCINV user guide

Evaluation power board with M7 connector

System performance

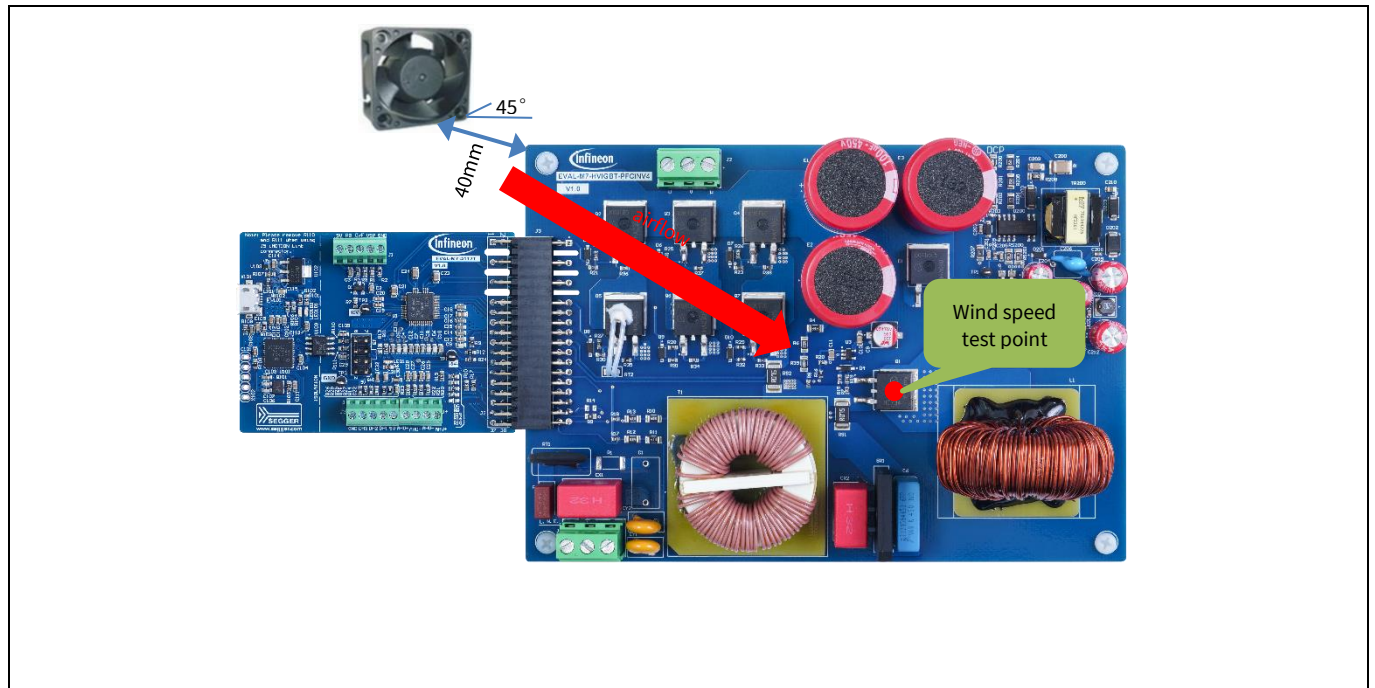


Figure 15 Cooling fan location for the test

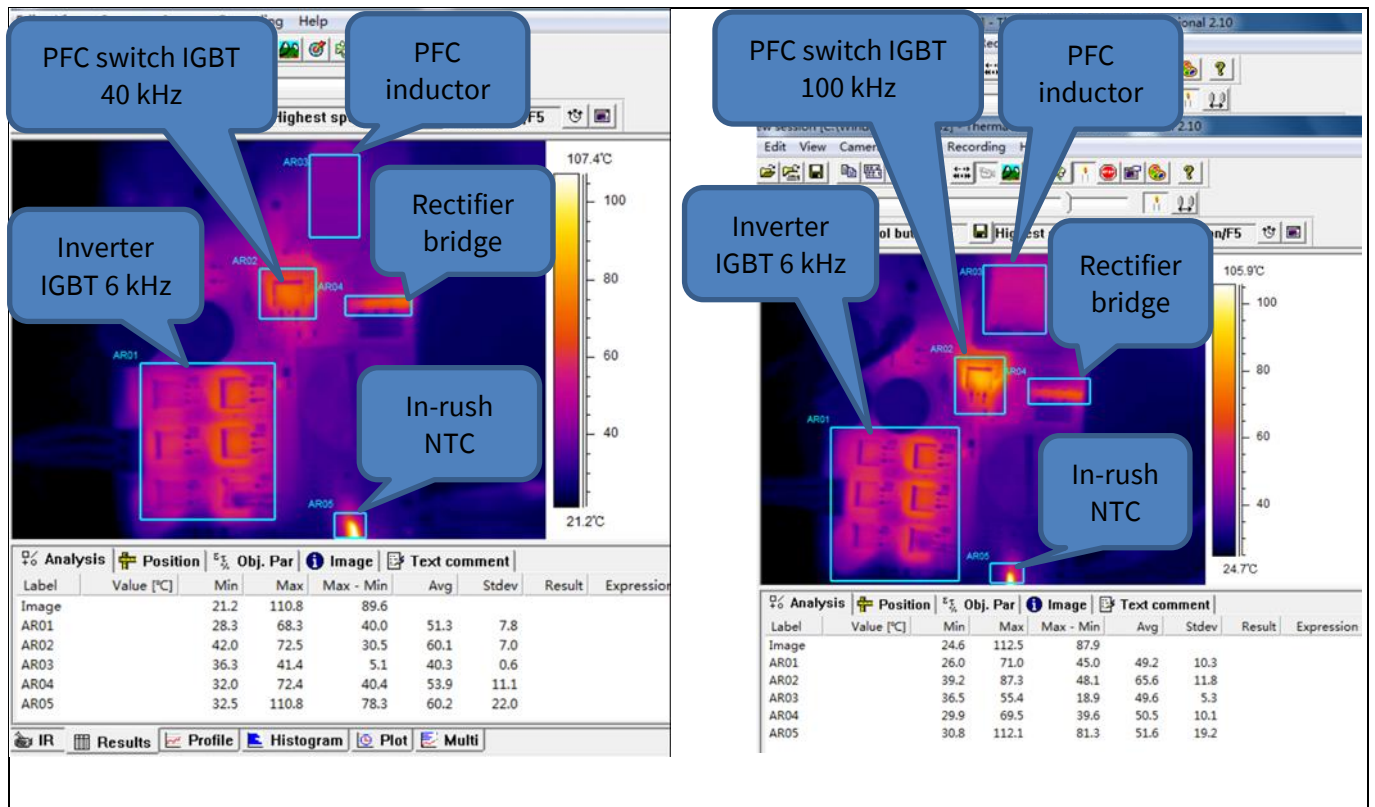


Figure 16 Thermal test snapshot with cooling fan at 220 Vac input, 40 kHz & 100 kHz PFC, and 400 W output

4.3 PFC test results

The two power boards, EVAL-M7-HVIGBT-PFCINV4 and EVAL-M7-HVIGBT-PFCINV1, were tested with the IMD112T control board, EVAL-M7-D112T. Please refer to the EVAL-M7-D112T control board's user guide, UG-2023-04, for more details [4]. The EVAL-M7-HVIGBT-PFCINV power board can support up to 200 W output power with natural cooling and 400 W output power with force cooling (24 V_{DC}/0.18 A cooling fan). The EVAL-M7-D112T can, of course, drive higher power output when matched with a higher rated power board compatible with M7 connector.

Table 8 lists the PFC test results with 40 kHz and 100 kHz PWM frequency. The line current total harmonic distortion (THD) is as low as 1.031% at 220 Vac input, 40 kHz PFC, and 400 W load.

Table 8 PFC test results

| Test conditions PFC inductor: 3.5 mH for 40 kHz; 1.5 mH for 100 kHz PFC frequency: 40 kHz; 100 kHz DC Bus voltage: 380 V AC input: AC power source (50 Hz selected for test) | | | | | |
|---|-----------------|--------|----------------------|---------------------|-----------------|
| Input voltage (Vac) | Input power (W) | PF | I _{THD} (%) | PFC frequency (kHz) | Condition |
| 170 | 205 | 0.9974 | 1.352 | 40 | Natural cooling |
| | 405 | 0.9996 | 1.175 | 40 | Fan cooling |
| 220 | 202 | 0.9932 | 1.821 | 40 | Natural cooling |
| | 411 | 0.9986 | 1.031 | 40 | Fan cooling |
| 260 | 207 | 0.9853 | 3.817 | 40 | Natural cooling |
| | 409 | 0.9966 | 1.972 | 40 | Fan cooling |
| 170 | 201 | 0.9962 | 3.642 | 100 | Natural cooling |
| | 373 | 0.9994 | 2.166 | 100 | Fan cooling |
| 220 | 207 | 0.9896 | 4.330 | 100 | Natural cooling |
| | 404 | 0.9971 | 2.656 | 100 | Fan cooling |
| 260 | 203 | 0.9773 | 6.777 | 100 | Natural cooling |
| | 405 | 0.9949 | 1.988 | 100 | Fan cooling |

4.4 Test results

The output power capability of the EVAL-M7-HVIGBT-PFCINV power board was tested at different carrier frequencies. The IGBT case temperature of both boards was tested for up to 100°C under test conditions. All the tests were conducted at room temperature. The tests began with natural cooling; the cooling fan was started when the case temperature of either the PFC IGBT or the inverter IGBT reached 100°C. The test was stopped when the input power reached 400 W.

Typically, I_{THD} is as low as 1.031% at 220 Vac input voltage and 410 W input power for 40 kHz PFC PWM and I_{THD} is 2.656% for 100 kHz PFC PWM under same conditions: 220 Vac input voltage, 410 W input power.

Figure 17 and Figure 18 show the increment in PFC IGBT case temperature in relation to input power for 40 kHz and 100 kHz PFC frequency. Figure 19 shows the inverter IGBT's highest case temperature increment versus the motor-phase current at different PWM frequencies. Figure 20, Figure 21, and Figure 22 depicts the scope

waveforms for input line voltage and current, DC bus voltage, PFC inductor current, and inverter phase current at 400 W input power.

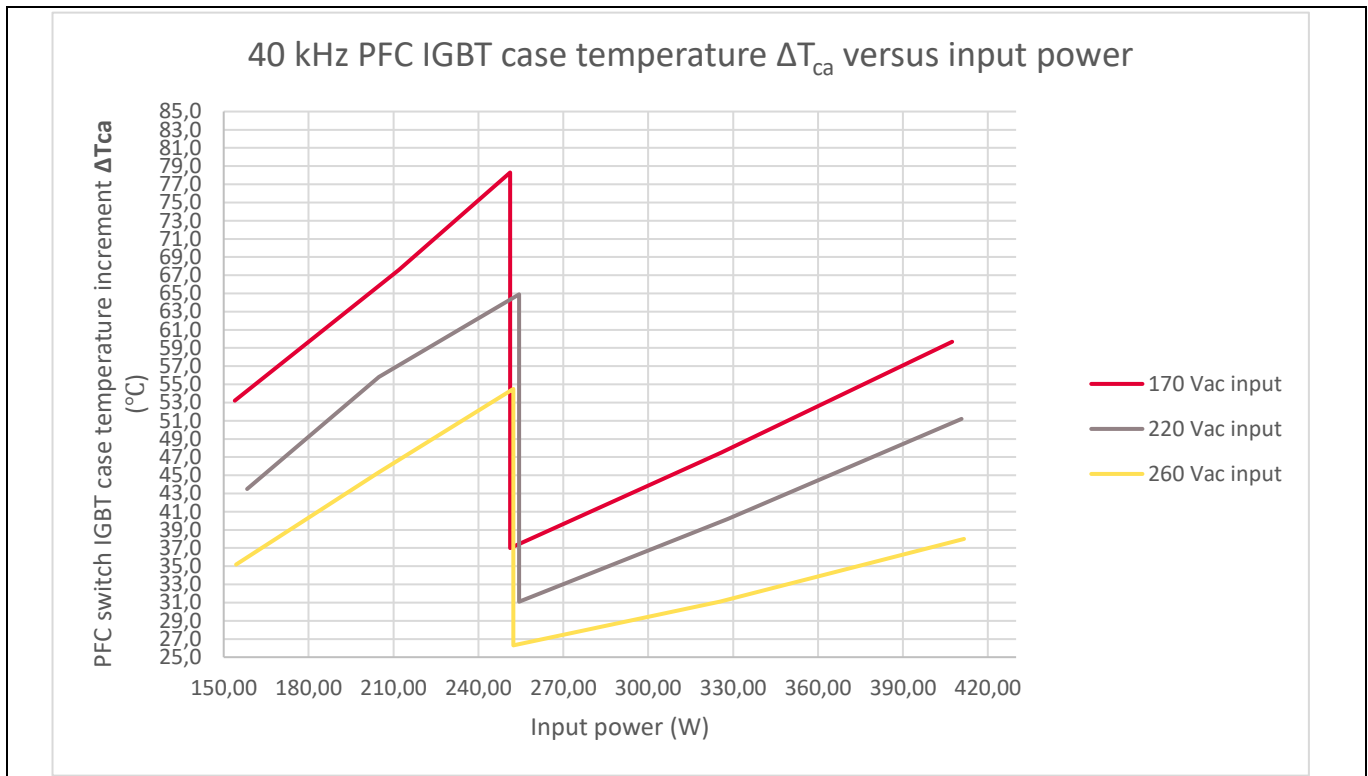


Figure 17 PFC switch IGBT ΔT_{ca} versus input power at 40 kHz PFC frequency

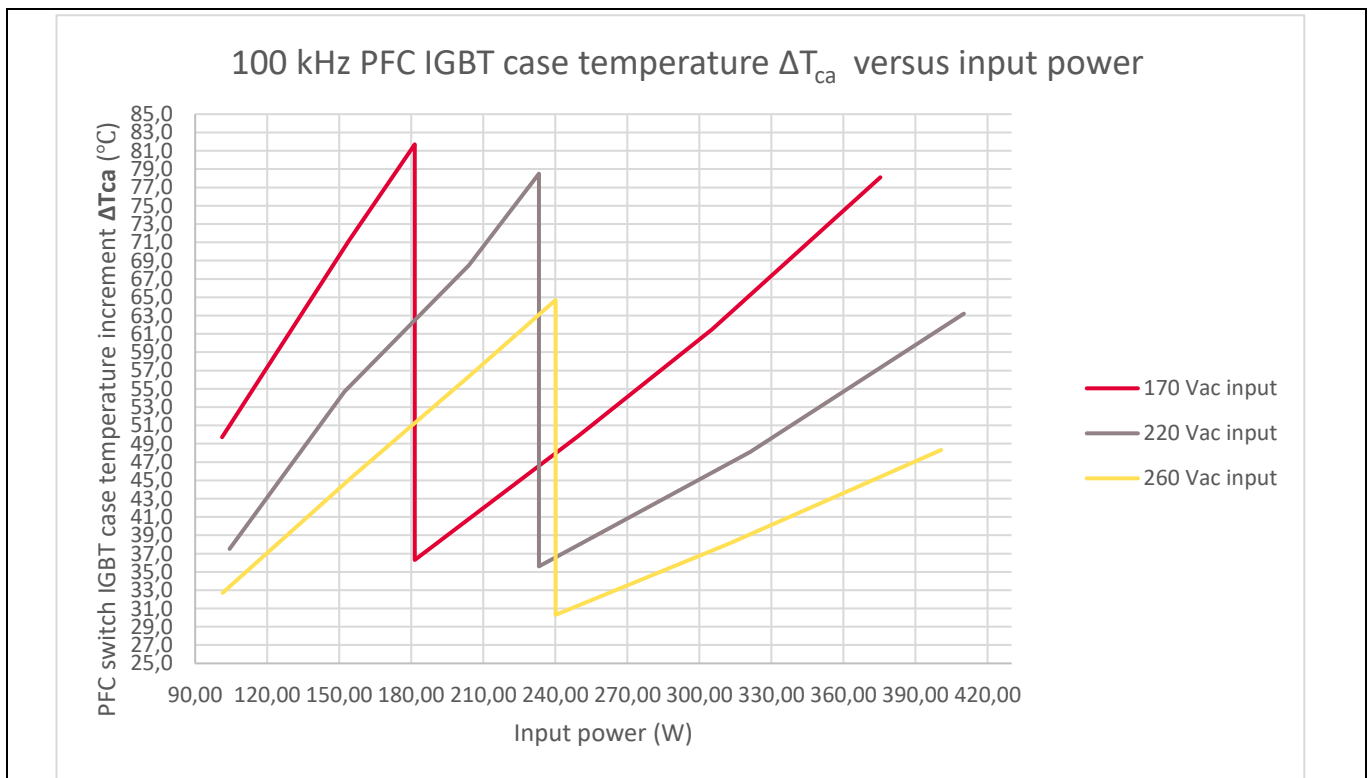


Figure 18 PFC switch IGBT ΔT_{ca} versus input power at 100 kHz PFC frequency

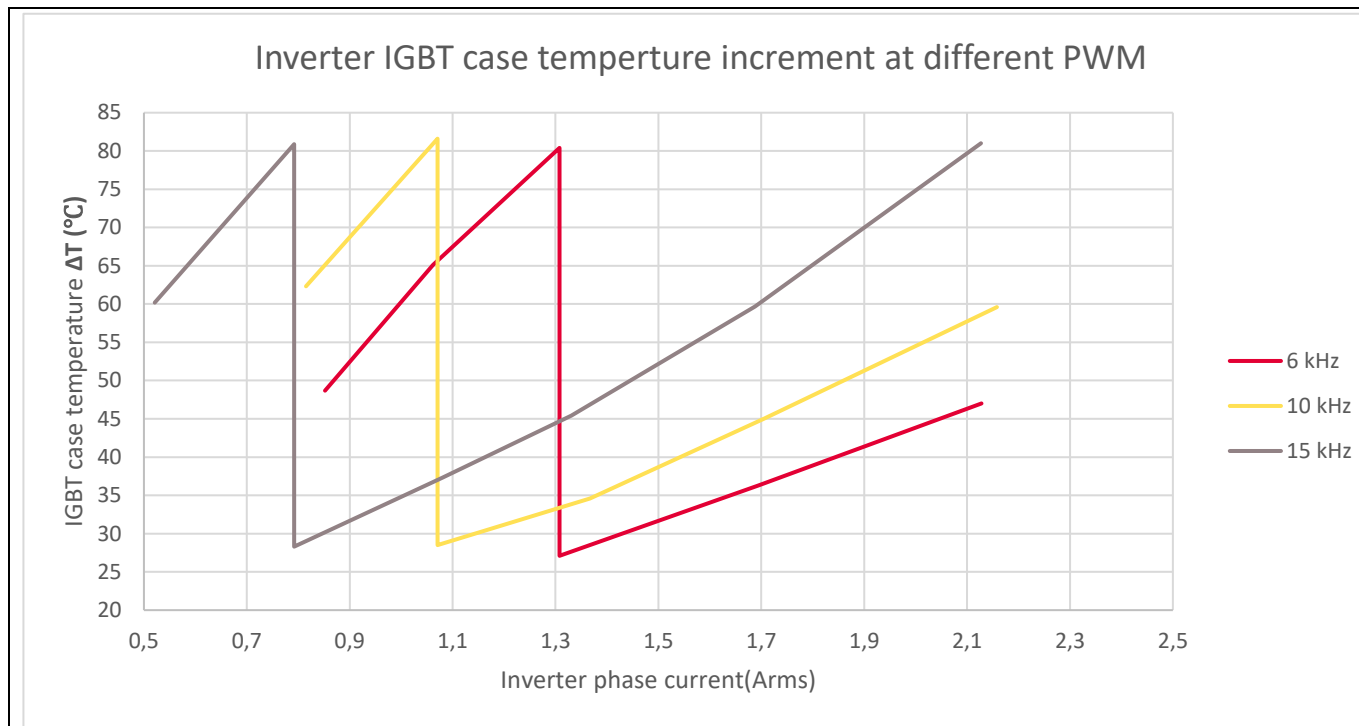


Figure 19 Inverter IGBT case temperature ΔT_{ca} versus output phase current at different carrier frequencies

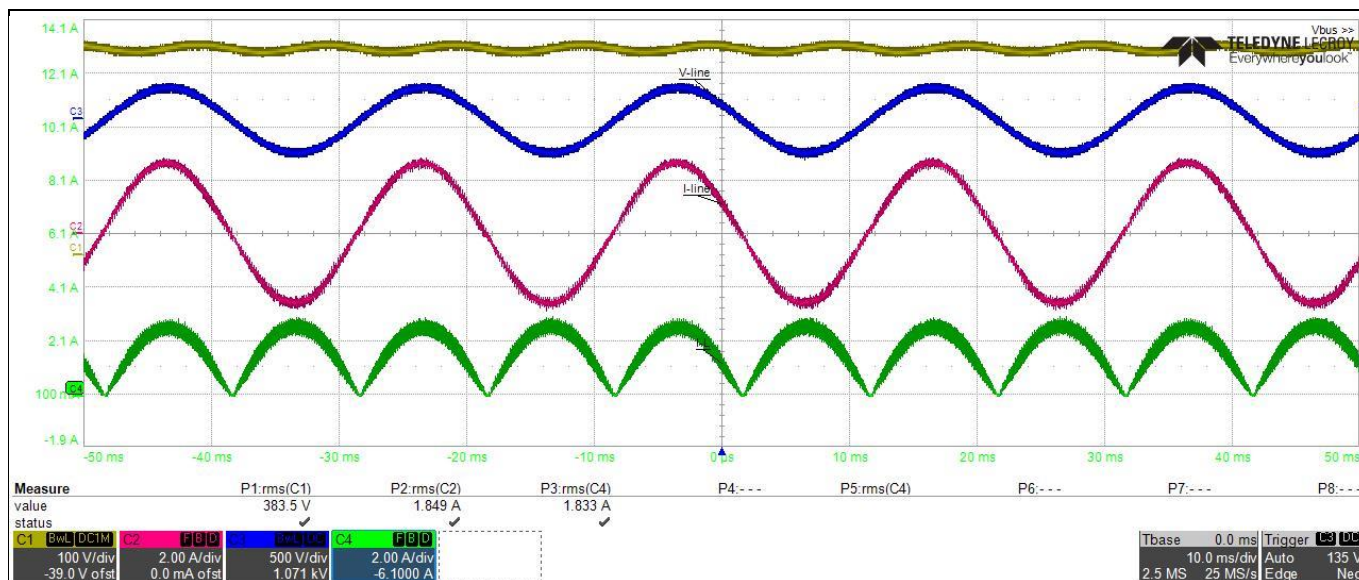
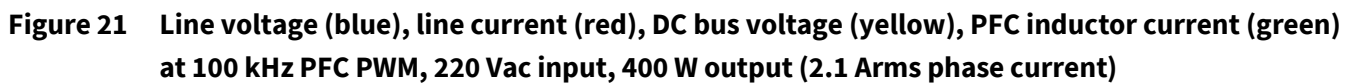


Figure 20 Line voltage (blue), line current (red), DC bus voltage (yellow), PFC inductor current (green) at 40 kHz PFC PWM, 220 Vac input, 400 W output (2.1 Arms phase current)



5 Appendices

5.1 Abbreviations and definitions

Table 9 Abbreviations

| Abbreviation | Meaning |
|---------------------|------------------------------|
| THD | Total harmonic distortion |
| EMI | Electromagnetic interference |
| PFC | Power factor correction |
| PF | Power factor |
| iSD | iMOTION™ Solution Designer |
| FOC | Field oriented control |

References

- [1] Infineon Technologies AG. Datasheet (2018): IKB15N65EH5 – TRENCHSTOP™ 5 high speed switching IGBT with full rated current RAPID 1 anti parallel diode. V2.1 www.infineon.com
- [2] Infineon Technologies AG. Datasheet (2013): IKB06N60T – TRENCHSTOP™ and FieldStop technology with soft, fast recovery anti-parallel Emitter Controlled HE diode. V2.5 www.infineon.com
- [3] Infineon Technologies AG. User manual (2022): Getting Started with iMOTION™ Solution Designer. www.infineon.com
- [4] Infineon Technologies AG. User guide (2023): EVAL-M7-D112T user guide. www.infineon.com

Revision history

Revision history

| Document version | Date | Description of changes |
|------------------|-----------|------------------------|
| V1.0 | 2023-6-30 | First version |
| | | |
| | | |

Trademarks

All referenced product or service names and trademarks are the property of their respective owners.

Edition 2023-6-30

Published by

Infineon Technologies AG

81726 Munich, Germany

© 2023 Infineon Technologies AG.

All Rights Reserved.

Do you have a question about this document?

Email: erratum@infineon.com

Document reference

UG-2023-05

WARNINGS

Due to technical requirements products may contain dangerous substances. For information on the types in question please contact your nearest Infineon Technologies office.

Except as otherwise explicitly approved by Infineon Technologies in a written document signed by authorized representatives of Infineon Technologies, Infineon Technologies' products may not be used in any applications where a failure of the product or any consequences of the use thereof can reasonably be expected to result in personal injury.