

# REF-MHA1KIM5PSOC4 user guide

## Washing machine motor control reference design

### About this document

#### Scope and purpose

This user manual provides an overview of the REF-MHA1KIM5PSOC4 home appliance board including its main features, key data, pin assignments and mechanical dimensions.

REF-MHA1KIM5PSOC4 reference board is based on PSoC 4100S Plus and IKCM10H60GA IPM (CIPOS™ Mini 600 V, 10 A three-phase intelligent power module), which was developed to support customers in designing their own projects, such as drum or top-loading washing machines.

#### Intended audience

This user manual is intended for all technical specialists who are familiar with motor control and high-power electronics converters, and also have some experience in the development of washing machines. This board is intended to be used under laboratory conditions.

#### Reference Board/Kit

Product(s) embedded on a PCB with a focus on specific applications and defined use cases that may include software. PCB and auxiliary circuits are optimized for the requirements of the target application.

*Note: Boards do not necessarily meet safety, EMI, quality standards (for example UL, CE) requirements.*

**Important notice****Important notice**

**“Evaluation Boards and Reference Boards” shall mean products embedded on a printed circuit board (PCB) for demonstration and/or evaluation purposes, which include, without limitation, demonstration, reference and evaluation boards, kits and design (collectively referred to as “Reference Board”).**

**Environmental conditions have been considered in the design of the Evaluation Boards and Reference Boards provided by Infineon Technologies. The design of the Evaluation Boards and Reference Boards has been tested by Infineon Technologies only as described in this document. The design is not qualified in terms of safety requirements, manufacturing and operation over the entire operating temperature range or lifetime.**

**The Evaluation Boards and Reference Boards provided by Infineon Technologies are subject to functional testing only under typical load conditions. Evaluation Boards and Reference Boards are not subject to the same procedures as regular products regarding returned material analysis (RMA), process change notification (PCN) and product discontinuation (PD).**

**Evaluation Boards and Reference Boards are not commercialized products, and are solely intended for evaluation and testing purposes. In particular, they shall not be used for reliability testing or production. The Evaluation Boards and Reference Boards may therefore not comply with CE or similar standards (including but not limited to the EMC Directive 2004/EC/108 and the EMC Act) and may not fulfill other requirements of the country in which they are operated by the customer. The customer shall ensure that all Evaluation Boards and Reference Boards will be handled in a way which is compliant with the relevant requirements and standards of the country in which they are operated.**

**The Evaluation Boards and Reference Boards as well as the information provided in this document are addressed only to qualified and skilled technical staff, for laboratory usage, and shall be used and managed according to the terms and conditions set forth in this document and in other related documentation supplied with the respective Evaluation Board or Reference Board.**

**It is the responsibility of the customer’s technical departments to evaluate the suitability of the Evaluation Boards and Reference Boards for the intended application, and to evaluate the completeness and correctness of the information provided in this document with respect to such application.**

**The customer is obliged to ensure that the use of the Evaluation Boards and Reference Boards does not cause any harm to persons or third party property.**

**The Evaluation Boards and Reference Boards and any information in this document is provided "as is" and Infineon Technologies disclaims any warranties, express or implied, including but not limited to warranties of non-infringement of third party rights and implied warranties of fitness for any purpose, or for merchantability.**

**Infineon Technologies shall not be responsible for any damages resulting from the use of the Evaluation Boards and Reference Boards and/or from any information provided in this document. The customer is obliged to defend, indemnify and hold Infineon Technologies harmless from and against any claims or damages arising out of or resulting from any use thereof.**

**Infineon Technologies reserves the right to modify this document and/or any information provided herein at any time without further notice.**

## Safety precautions

### Safety precautions

Note: Please note the following warnings regarding the hazards associated with development systems.

Table 1 Safety precautions

	<b>Warning:</b> The DC link potential of this board is up to 1000 VDC. When measuring voltage waveforms by oscilloscope, high voltage differential probes must be used. Failure to do so may result in personal injury or death.
	<b>Warning:</b> The evaluation or reference board contains DC bus capacitors which take time to discharge after removal of the main supply. Before working on the drive system, wait five minutes for capacitors to discharge to safe voltage levels. Failure to do so may result in personal injury or death. Darkened display LEDs are not an indication that capacitors have discharged to safe voltage levels.
	<b>Warning:</b> The evaluation or reference board is connected to the grid input during testing. Hence, high-voltage differential probes must be used when measuring voltage waveforms by oscilloscope. Failure to do so may result in personal injury or death. Darkened display LEDs are not an indication that capacitors have discharged to safe voltage levels.
	<b>Warning:</b> Remove or disconnect power from the drive before you disconnect or reconnect wires, or perform maintenance work. Wait five minutes after removing power to discharge the bus capacitors. Do not attempt to service the drive until the bus capacitors have discharged to zero. Failure to do so may result in personal injury or death.
	<b>Caution:</b> The heat sink and device surfaces of the evaluation or reference board may become hot during testing. Hence, necessary precautions are required while handling the board. Failure to comply may cause injury.
	<b>Caution:</b> Only personnel familiar with the drive, power electronics and associated machinery should plan, install, commission and subsequently service the system. Failure to comply may result in personal injury and/or equipment damage.
	<b>Caution:</b> The evaluation or reference board contains parts and assemblies sensitive to electrostatic discharge (ESD). Electrostatic control precautions are required when installing, testing, servicing or repairing the assembly. Component damage may result if ESD control procedures are not followed. If you are not familiar with electrostatic control procedures, refer to the applicable ESD protection handbooks and guidelines.
	<b>Caution:</b> A drive that is incorrectly applied or installed can lead to component damage or reduction in product lifetime. Wiring or application errors such as undersizing the motor, supplying an incorrect or inadequate AC supply, or excessive ambient temperatures may result in system malfunction.
	<b>Caution:</b> The evaluation or reference board is shipped with packing materials that need to be removed prior to installation. Failure to remove all packing materials that are unnecessary for system installation may result in overheating or abnormal operating conditions.

## Table of contents

<b>About this document.....</b>	<b>1</b>
<b>Important notice .....</b>	<b>2</b>
<b>Safety precautions.....</b>	<b>3</b>
<b>Table of contents.....</b>	<b>4</b>
<b>1 The board at a glance.....</b>	<b>5</b>
1.1 Block diagram.....	5
1.2 Main features .....	5
1.3 Board parameter and technical data .....	7
1.4 Pin assignment of PSoC 4100S Plus.....	9
<b>2 System and functional description .....</b>	<b>11</b>
2.1 Getting started.....	12
2.2 FOC introduction .....	12
2.3 Main features .....	13
<b>3 System design.....</b>	<b>15</b>
3.1 Schematics .....	15
3.1.1 MCU section using PSoC 4100S Plus .....	15
3.1.2 Inverter section using IKCM10H60GA .....	16
3.1.3 DC bus voltage sampling section.....	16
3.1.4 Motor-phase current sampling with internal OP AMPs .....	17
3.1.5 Inverter overcurrent protection section with internal comparator .....	18
3.1.6 Over-temperature and VFO circuit .....	18
3.1.7 EMI filter and AC-DC conversion .....	19
3.1.8 Auxiliary power supply.....	20
3.2 PCB layout .....	21
3.3 Bill of material (BOM) .....	23
<b>4 System performance .....</b>	<b>25</b>
<b>5 Appendices.....</b>	<b>26</b>
5.1 Abbreviations and definitions.....	26
<b>Revision history.....</b>	<b>26</b>

**The board at a glance**

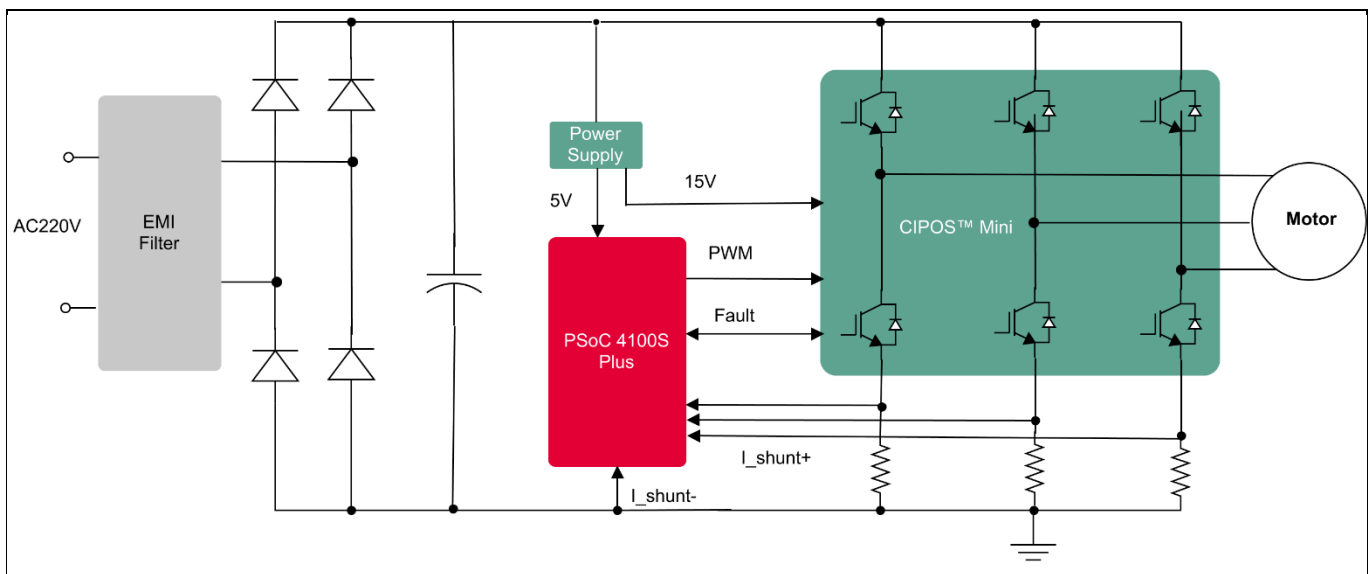
## 1 The board at a glance

REF-MHA1KIM5PSOC4 is a reference board based on the PSoC 4100S Plus and CIPOS™ Mini 600 V, 10 A three-phase intelligent power module (IPM).

The REF-MHA1KIM5PSOC4 board was designed for customers interested in washer solutions. The features of this board are described in the main features' chapter of this document (UG-2021-36), whereas the remaining paragraphs provide information enabling customers to copy, modify and qualify the design for production according to their own specific requirements.

### 1.1 Block diagram

The block diagram of the REF-MHA1KIM5PSOC4 is depicted in [Figure 1](#). This evaluation board includes an electromagnetic induction (EMI) filter, soft power-up circuit, auxiliary power supply to provide 15 V and 5 V, and the CIPOS™ Mini IPM.



**Figure 1. The block diagram of the REF-MHA1KIM5PSOC4**

The power supply of this board is 220 VAC, and the MCU is a 5 V system. The hardware circuit for overtemperature and overcurrent protection is also included in this reference board. And the current sampling circuit is leg shunt that connects to the PSoC 4100S Plus.

### 1.2 Main features

REF-MHA1KIM5PSOC4 is a reference board for washing-machine motor drive applications. It demonstrates Infineon's PSoC 4100S Plus control IC along with CIPOS™ Mini IPM.

**Main features of REF-MHA1KIM5PSOC4 include:**

- Input voltage 160~265 VAC
- Maximum 800 W motor power output
- Onboard EMI filter
- 3-shunt current sensing
- Auxiliary power supply on-board with 15 V, 5 V

**The board at a glance**

- Overcurrent protection
- Overtemperature hardware protection
- Sensing of DC-link voltage
- Fault diagnostic output
- Measurement test points compatible to standard oscilloscope probes

**The specific IC number of this board is CY8C4146AZI-S443, which is a part of the PSoC 4100S Plus family. Its main features include:**

- **32-bit MCU subsystem**

48 MHz Arm® Cortex®-M0+ CPU with a DMA controller

64 KB flash and 8 KB SRAM

External 4 to 33 MHz oscillator (ECO) with PLL and 32 kHz watch crystal oscillator (WCO)

- **Programmable analog blocks**

Two op amps with reconfigurable high-drive, external and high-bandwidth internal drive, and comparator modes and ADC input buffering capability. Op amps can operate in deep sleep low-power mode.

12-bit 1-Msps SAR ADC with differential and single-ended modes, and channel sequencer with signal averaging

Single-slope 10-bit ADC function provided by a capacitance sensing block

Two current DACs (IDACs) for general-purpose or capacitive sensing applications on any pin

Two low-power comparators that operate in deep sleep low-power mode

- **Programmable digital blocks**

Programmable logic blocks allowing Boolean operations to be performed on port inputs and outputs

- **Low-power 1.71 V to 5.5 V operation**

Deep sleep mode with operational analog and 2.5 µA digital system current

- **Serial communication**

Four independent, run-time reconfigurable serial communication blocks (SCBs) with re-configurable I2C, SPI, or UART functionality

- **Timing and pulse-width modulation**

Eight 16-bit timer/counter/pulse-width modulator (TCPWM) blocks

Center-aligned, edge, and pseudo-random modes

Comparator-based triggering of Kill signals for motor drive and other high-reliability digital logic applications

Quadrature decoder

- **Clock sources**

4 to 33 MHz external crystal oscillator (ECO)

PLL to generate 48 MHz frequency

32 kHz watch crystal oscillator (WCO)

**The board at a glance**

±2% internal main oscillator (IMO)

32 kHz internal low-power oscillator (ILO)

- **Packages**

48 TQFP

- **I/O subsystem**

Up to 38 GPIOs

**Main features of CIPOS™ Mini IPM IKCM10H60GA include:**

- Concept based on TRENCHSTOP™ IGBT
- 10 A of inverter current rating
- Rugged SOI gate driver technology
- Integrated bootstrap function
- Overcurrent shutdown
- All 6 switches turn off during protection
- Undervoltage lockout at all channels
- Cross-conduction prevention
- Built-in temperature monitoring
- Motor power rating up to 1000 W at 10 kHz
- UL certified

### **1.3 Board parameter and technical data**

[Table 2](#) depicts the important specifications of REF-MHA1KIM5PSOC4.

**Table 2 REF-MHA1KIM5PSOC4 board specifications**

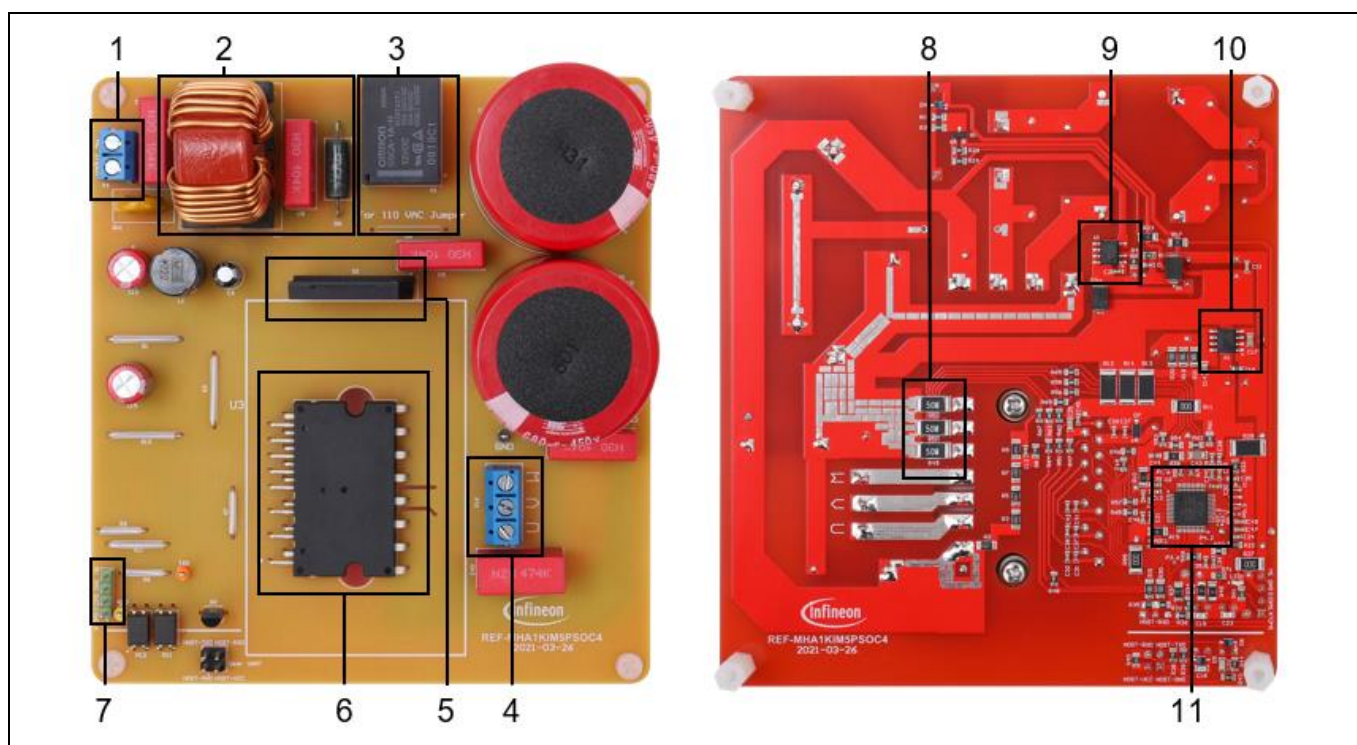
Parameters	Values	Conditions / comments
<b>Input</b>		
Voltage	160 V~265 VAC	Lower AC input, less motor power output
Input current	3.2 A	Input 220 VAC, Ta=25°C
<b>Output</b>		
Power (3 phases)	800 W	Input 220 VAC, fPWM=16 KHz, Ta=25°C, Th=70°C
Current per leg	5.1 Arms	Input 220 VAC , fPWM=16 KHz, Ta=25°C, Th=70°C
<b>DC bus voltage</b>		
Maximum DC bus voltage	420 V	
Minimum DC bus voltage	120 V	
<b>Switching frequency</b>		

**The board at a glance**

Parameters	Values	Conditions / comments
Inverter switching frequency fPWM	20 KHz	
<b>Current feedback</b>		
Inverter current sensing resistor	50 mΩ	
<b>Protections</b>		
Output current trip level	7.459 A	Configure by resistor R58,R59
Temperature trip level	100 °C	For controller board REF-MHA1KIM5PSOC4
<b>Onboard power supply</b>		
15 V	15 V ± 2 %, max. 500 mA	Used for CIPOS™ IPM gate driver and LDO
5 V	5 V ± 1 %, max. 300 mA	Supplying the 5 V to the MCU and protection circuits
<b>PCB characteristics</b>		
Material	FR4, 1.6 mm thickness, 2 layers. 35 μm copper thickness	
Dimensions	115 mm x 125 mm	
<b>System environment</b>		
Ambient temperature	From 0 to 50 °C	Non-condensing, maximum RH of 95 %



**The board at a glance**



**Figure 2. Functional groups of the REF-MHA1KIM5PSOC4 reference board (without heatsink)**

1. AC input connector
2. FUSE and EMI filter
3. Relay
4. Motor phase connector
5. Rectifier bridge
6. CIPOST™ Mini IPM
7. J-LINK debugger connector
8. Current sensing resistors
9. LNK305DG: 15 V auxiliary supply
10. TLS205B0EJ V50: 5 V auxiliary supply
11. PSoC 4100S Plus

## 1.4 Pin assignment of PSoC 4100S Plus

**Table 3 MCU Pins assignment**

Pin	Name	Label Name	Description
1	P1.7/VREF	NA	ADC bypass pin
2	P2.0	DC_Sample	VDC bus voltage sampling input
3	P2.1	Current_IU	U phase current sampling input
4	P2.2	Current_IV	V phase current sampling input
5	P2.3	IPM_TEMP	IPM temperature sampling input
6	P2.4	USER_ADC1	Reserved ADC input pin
7	P2.5	USER_ADC2	Reserved ADC input pin
8	P2.6	PWMWH	5 V compatible logic input for high side gate driver, phase W
9	P2.7	PWMWL	5 V compatible logic input for low side gate driver, phase W

# REF-MHA1KIM5PSOC4 user guide

## PSoC® 4 home appliance board for washing machine



### The board at a glance

Pin	Name	Label Name	Description
10	VSSD	NA	Digital ground
11	NC	NA	No connect
12	P3.0	PWMUH	5 V compatible logic input for high side gate driver, phase U
13	P3.1	PWMUL	5 V compatible logic input for low side gate driver, phase U
14	P3.2	SWDIO	SWD data
15	NC	NA	No connect
16	P3.3	SWCLK	SWD clock
17	P3.4	PWMVH	5 V compatible logic input for high side gate driver, phase V
18	P3.5	PWMVL	5 V compatible logic input for low side gate driver, phase W
19	P3.6	GPIO_P3_6	Reserved GPIO
20	P3.7	Comparator_OUT	Internal comparator output
21	VDDD	NA	VDD
22	P4.0	UART_RXD	RX pin for UART
23	P4.1	UART_TXD	TX pin for UART
24	P4.2	GPOIO_P4_2	Reserved GPIO
25	P4.3	RED_LED	Pin for LED control, digital output
26	P7.0	GPOIO_P7_0	Reserved GPIO
27	P7.1	GPOIO_P7_1	Reserved GPIO
28	P0.0	RELAY	Pin for relay control, digital output
29	P0.1	FAULT	IPM fault signal for hardware overcurrent check, digital input
30	P0.2	Comparator_IN+	Internal comparator input +
31	P0.3	Comparator_IN-	Internal comparator input -
32	P0.4	GPOIO_P0_4	Reserved GPIO
33	P0.5	GPOIO_P0_5	Reserved GPIO
34	P0.6	NA	Pin for external crystal
35	P0.7	NA	Pin for external crystal
36	XRES	RESET	Reset pin
37	VCCD	NA	Regulate digital supply (1.8V $\pm$ 5%)
38	VSSD	NA	Digital ground
39	VDDD	NA	Digital power
40	VDDA	NA	Analog power
41	VSSA	NA	Analog ground
42	P1.0	OPAMP_V+	Internal OP AMP input pin for V phase current sampling
43	P1.1	OPAMP_V-	Internal OP AMP input pin for V phase current sampling
44	P1.2	OPAMP_V_OUT	Internal OP AMP input pin for V phase current sampling
45	P1.3	OPAMP_U_OUT	Internal OP AMP input pin for U phase current sampling
46	P1.4	OPAMP_U-	Internal OP AMP input pin for U phase current sampling
47	P1.5	OPAMP_U+	Internal OP AMP input pin for U phase current sampling
48	P1.6	GPOIO_P1_6	Reserved GPIO

## 2 System and functional description

This chapter describes the development environment. Please note that the firmware for getting started is available on request through an Infineon sales representative.

**Table 4 Hardware environment**

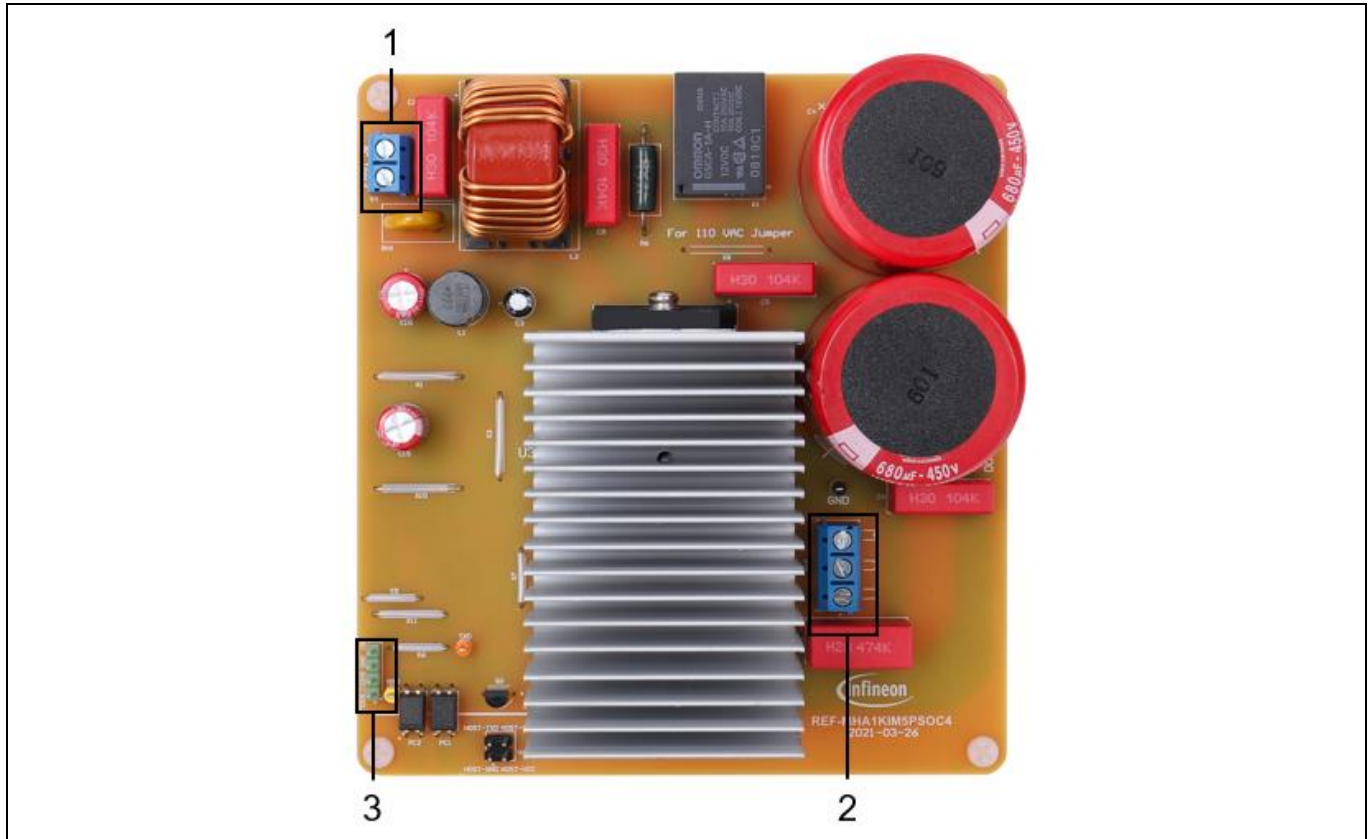
System	Description
MCU	CY8C4146AZI-S443
Hardware	REF-MHA1KIM5PSOC4
Emulator	<a href="#">J-Link</a> debugger with isolator

**Table 5 Software environment**

System	Description
PC System	Windows 7 (64-bit) or later
Software developing IDE	<a href="#">PSoC creator</a>
	<a href="#">IAR workbench</a>

## 2.1 Getting started

[Figure 3](#) shows the system connection of REF-MHA1KIM5PSOC4.



**Figure 3. The connection of the REF-MHA1KIM5PSOC4 reference board**

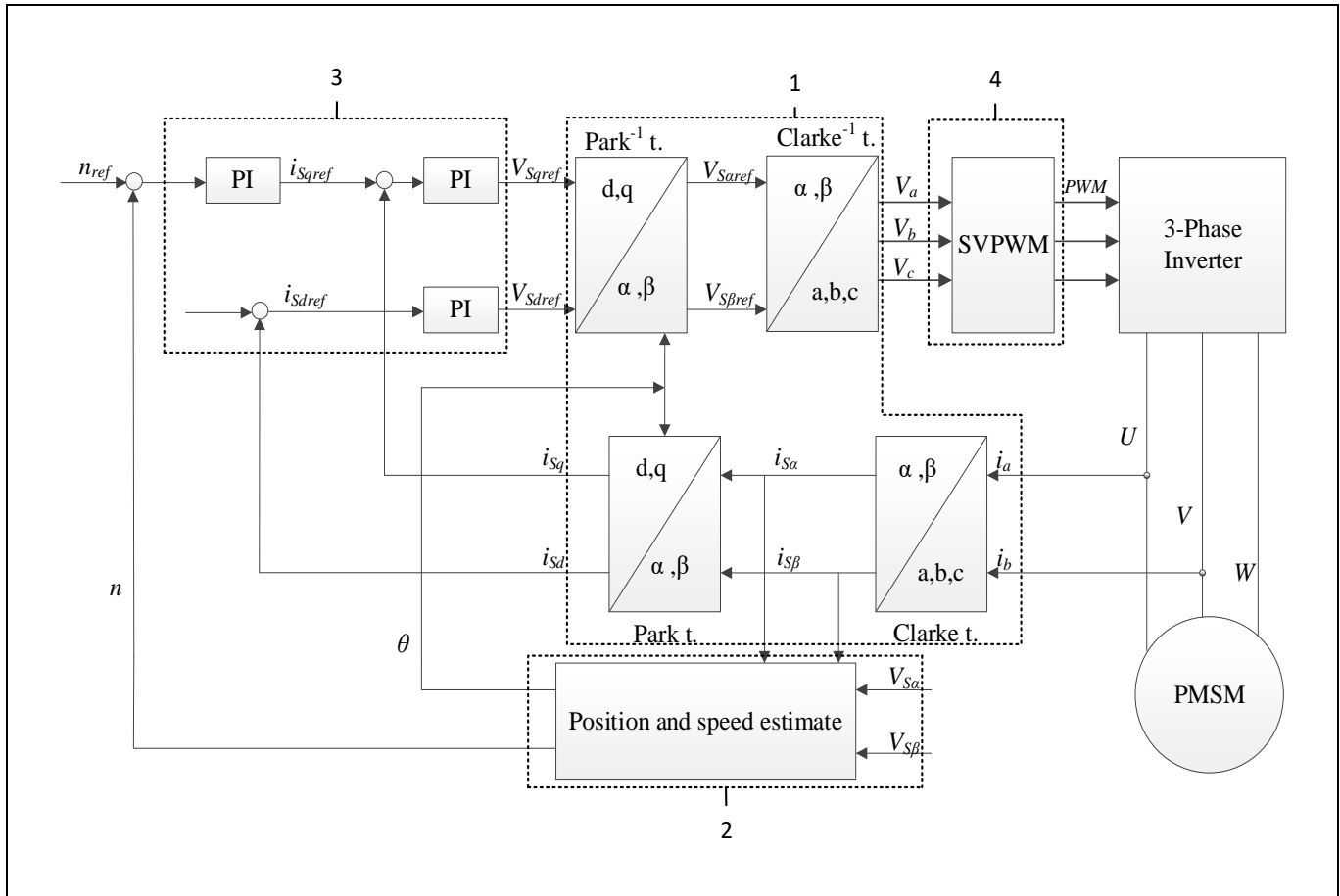
1. Connect the AC power-to-power input connector and power-on the system
2. Connect the motor phase outputs to the motor
3. Connect the debug connector on the board

## 2.2 FOC introduction

[Figure 4](#) shows the basic FOC control block diagram. The FOC control system includes:

1. Coordination of transformation, which includes Clarke/Park transforms and inv-Clarke/inv-Park transforms.
2. Algorithm estimate for position and speed.
3. PI control, which includes two currents (d/q axis current) PI loop and one speed PI loop.
4. SVPWM block.

The algorithm controls either the motor speed or motor torque using a proportional-integral (PI) controller based on a mathematical model of the PMSM. The control result is sent to a space vector pulse width modulation (SVPWM) block. The SVPWM block generates three-phase voltages that change the stator currents.



**Figure 4 FOC control block diagram**

## 2.3 Main features

- Wave frequency 16 KHz
- 3-shunt current sample
- High-performance PSoC4 MCU: Integrated 2 unit inner OP AMP and 1 unit comparator
- PLL & direct EMF back calculation of rotor position; precision can reach 1%
- High-frequency injection estimates the rotor's initial position to avoid startup vibration
- Direct closed-loop startup function to decrease startup power cost
- Voltage feedback speed brake for BLDC motor
- Energy consumption speed brake on DD motor
- Support high-speed, field-weakening control
- Enable CCW & CW direction reversal without motor stop
- Motor resistor check & motor temperature protection
- Catch spin function
- Motor lock recovery function

**System and functional description**

- Support position angle control
- OOB function; precision at 100 g
- Weight function precision less than 1 kg
- Wide range speed adjustment: 1 Hz to 350 Hz
- Class B and UL certification
- Full protection
- Stop protect function

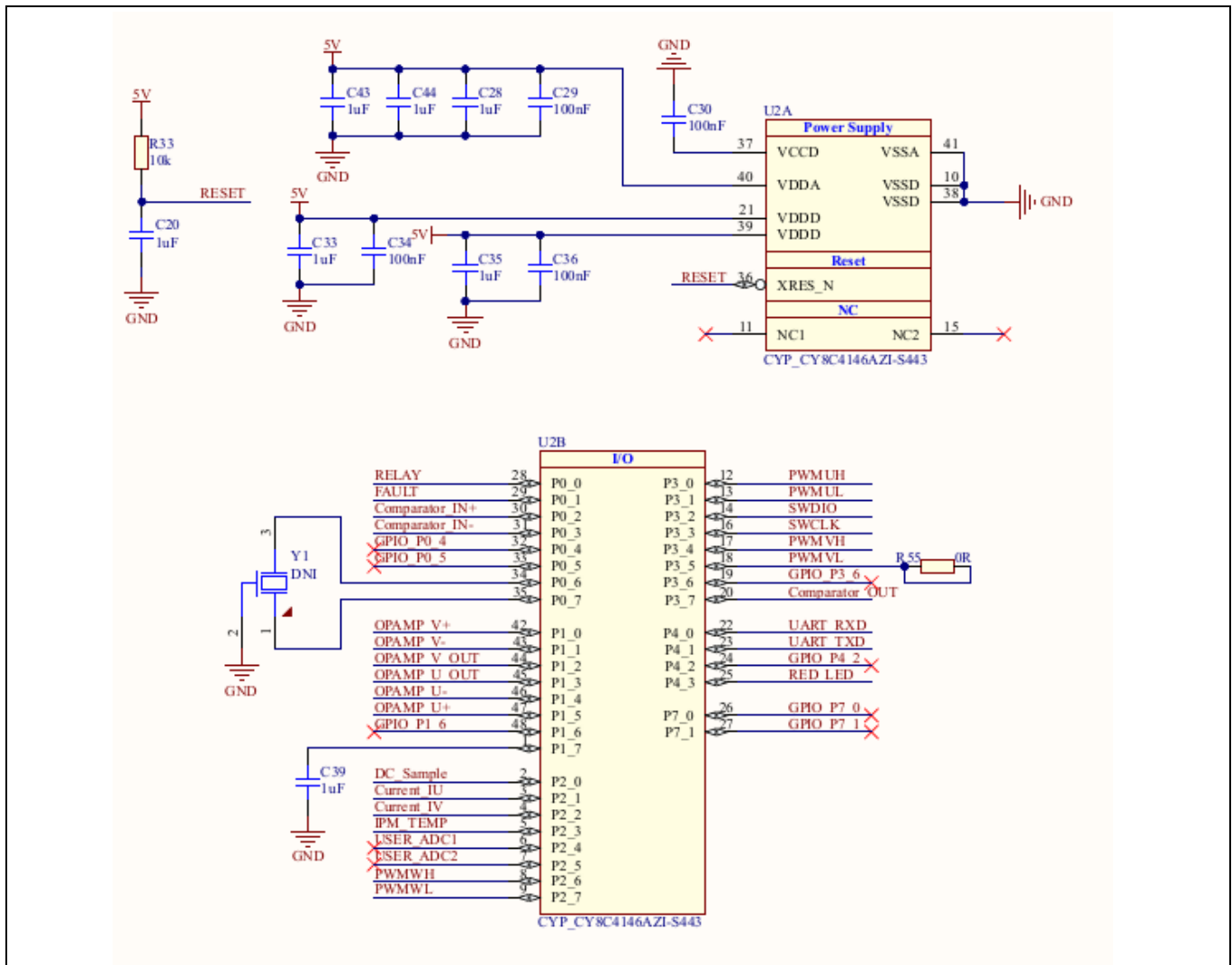
## System design

### 3 System design

#### 3.1 Schematics

##### 3.1.1 MCU section using PSoC 4100S Plus

Figure 5 shows the schematic of this chip.



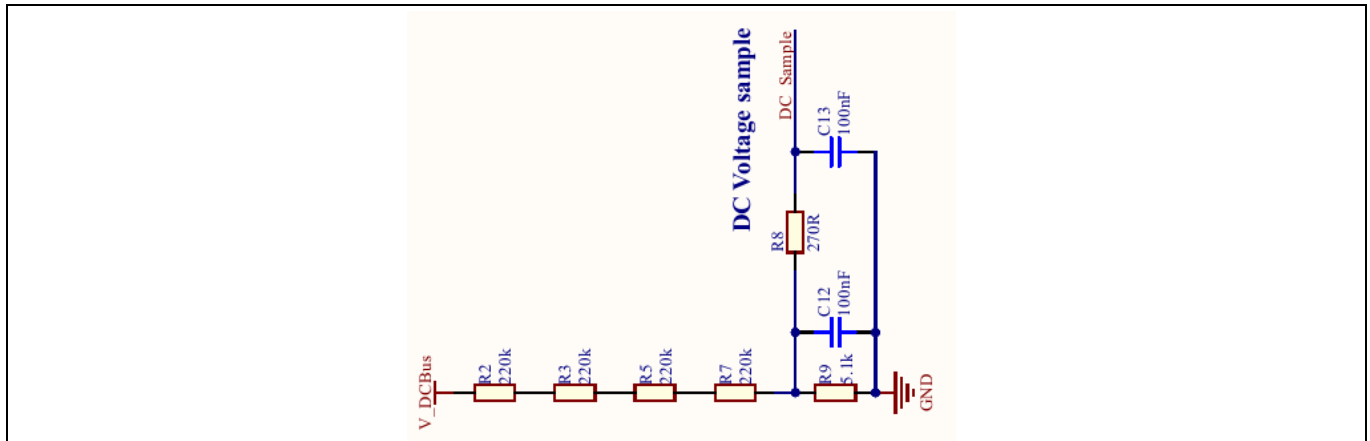
**Figure 5. Schematic of PSoC4 MCU**

Several points must be considered:

1. Pin 1 (P1.7) is the ADC bypass pin for ADC sampling and is connected with a 1 uF capacitor to avoid noise.
2. Pin 37 (VCCD) should be connected with a 100 nF capacitor.
3. For the minimum system, please refer to the schematic diagram in [Figure 5](#).
4. External crystal is a reserved component; our project uses IMO as the main clock.
5. It is recommended to keep the PWM signal pins as in the schematic. High-side and low-side signals must not be exchanged.







**Figure 7. Schematic of DC\_bus voltage sampling**

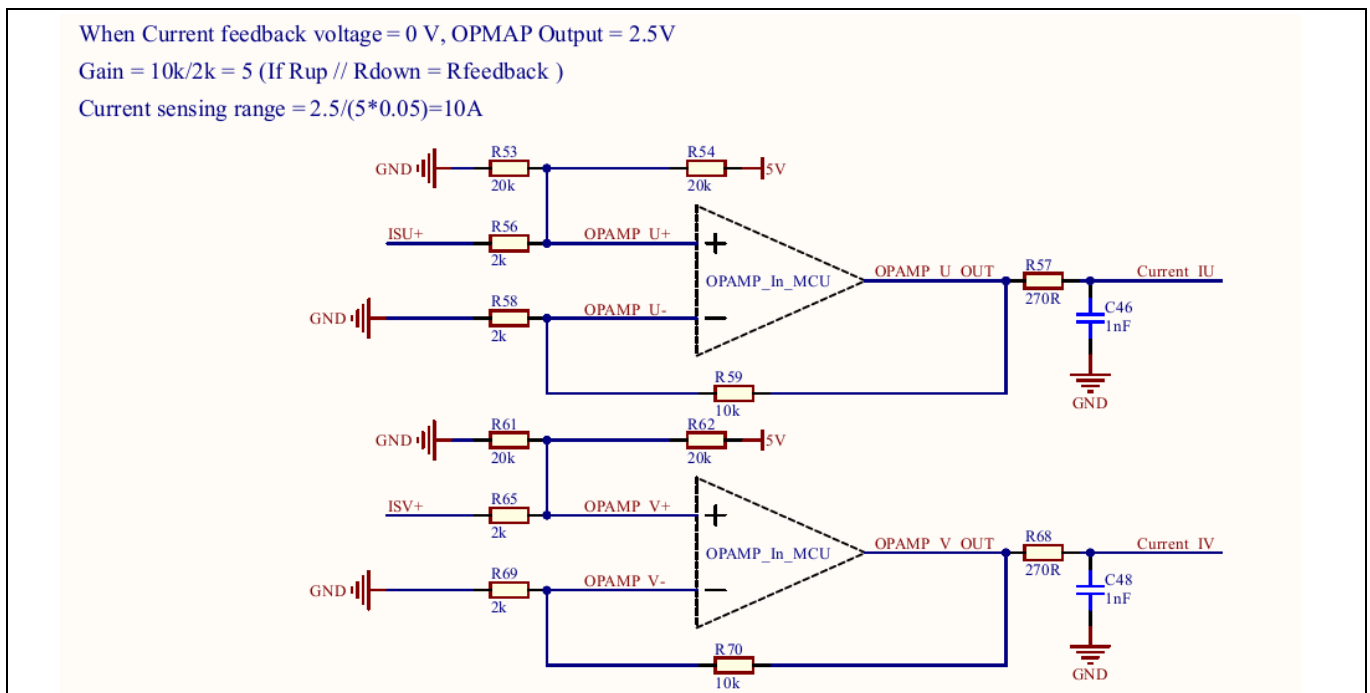
The value of VDC\_bus and VDC\_factor can be calculated using the following equations:

$$V_{DC\_BUS} = VDC_{Factor} * V_{DC\_Sample}$$

$$V_{DC\_Factor} = \frac{R2+R3+R5+R7+R9}{R9}$$

### 3.1.4 Motor-phase current sampling with internal OP AMPs

[Figure 8](#) depicts the schematic diagram of the motor-phase current sampling circuit, which consists of two internal OP AMPs of PSoC 4100S Plus and resistor circuit. This circuit is magnified by 5 and the offset voltage of this circuit is 2.5 V (when input voltage is 0 V).

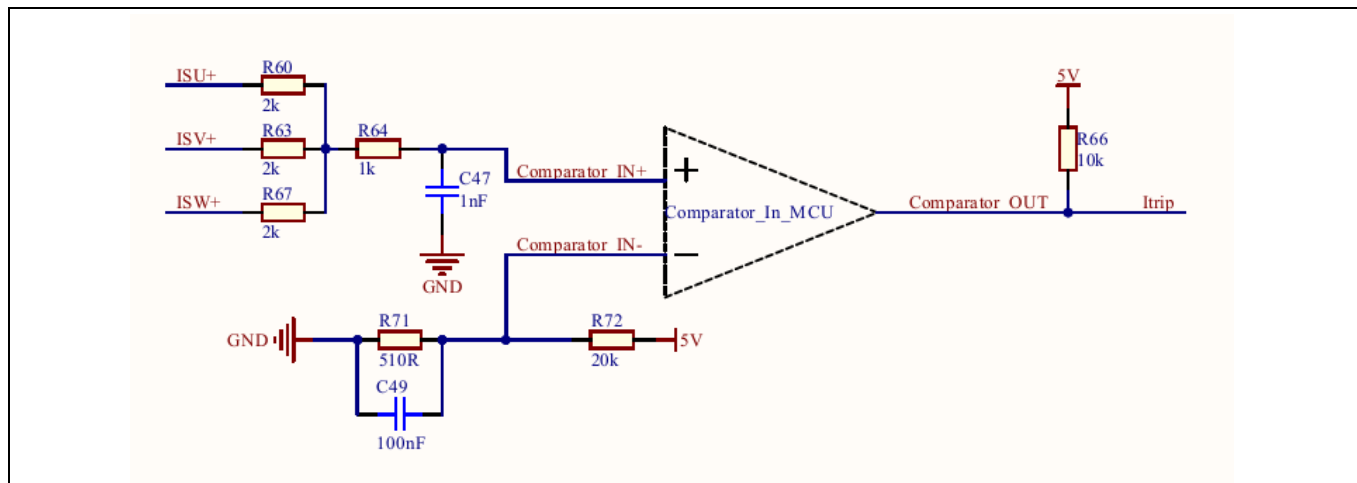


**Figure 8. Current sampling circuit with internal OP AMPs**

## System design

### 3.1.5 Inverter overcurrent protection section with internal comparator

Figure 9 depicts the schematic diagram of the inverter overcurrent protection circuit using an internal comparator.



**Figure 9. Hardware overcurrent protection circuit with internal comparator**

The typical value of ITRIP positive-going threshold  $V_{IT, TH+}$  is 470 mV. The following equation calculates the peak current of the inverter output.

$$I_{trip} = ((5 * R71)/(R71 + R72)) * 3/R_{49} = 7.459(A)$$

### 3.1.6 Over-temperature and VFO circuit

#### Over-temperature circuit introduction

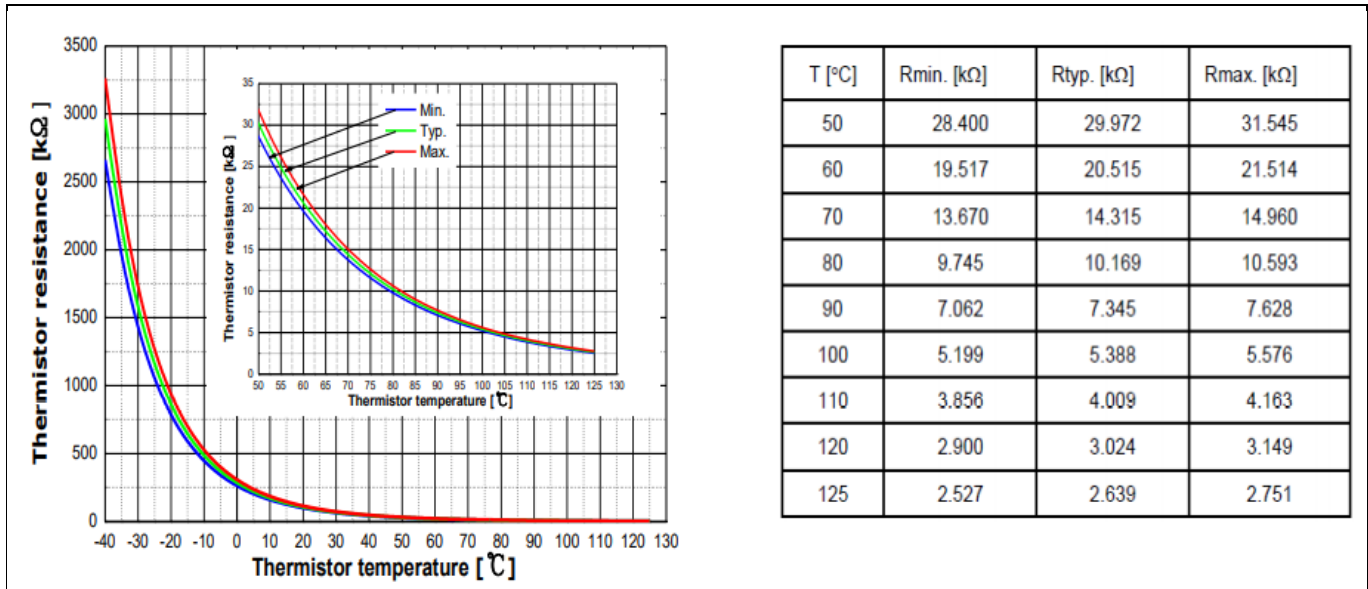
The thermistor characteristics of the CIPOS™ Mini IPM with built-in NTC are summarized in Table 6.

**Table 6 Thermistor characteristics**

Description	Condition	Symbol	Value			Unit
			min	typ	max	
Resistor	$T_{NTC}$	$R_{NTC}$	-	85	-	$K\Omega$
B-constant of NTC (negative temperature coefficient)		B (25/100)	-	4092	-	K

Figure 10 depicts the thermistor readout vs. temperature, and typical thermistor resistance values vs. temperature table.

## System design



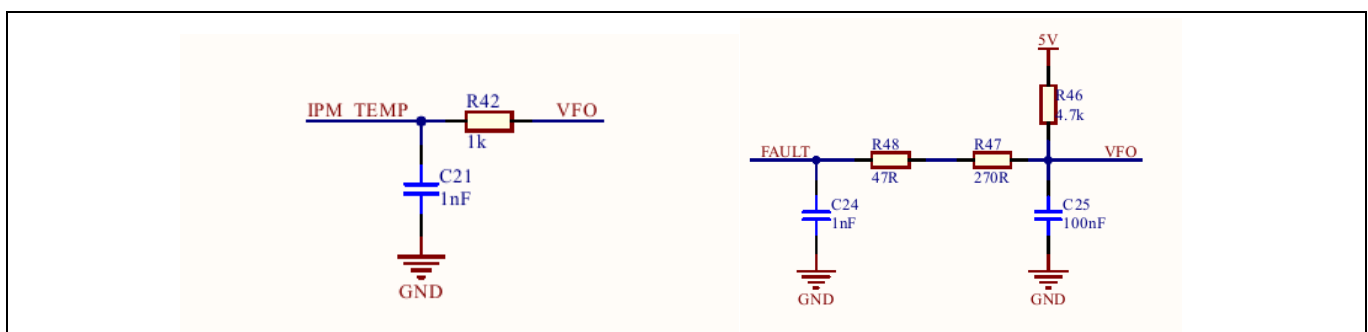
**Figure 10. Thermistor readout vs. temperature (with 4.7 kohm pull-down resistor) and typical thermistor resistance values vs. temperature table**

The VFO pin of CIPOS™ modules provides direct access to the NTC, which is referenced to VSS. An external pull-up resistor connected to 5 V ensures that the resulting voltage can be directly connected to the microcontroller.

[Figure 11](#) depicts the hardware overcurrent circuit at pin VFO. An external pull-up resistor R46 is required to bias the NTC.

### VFO circuit introduction

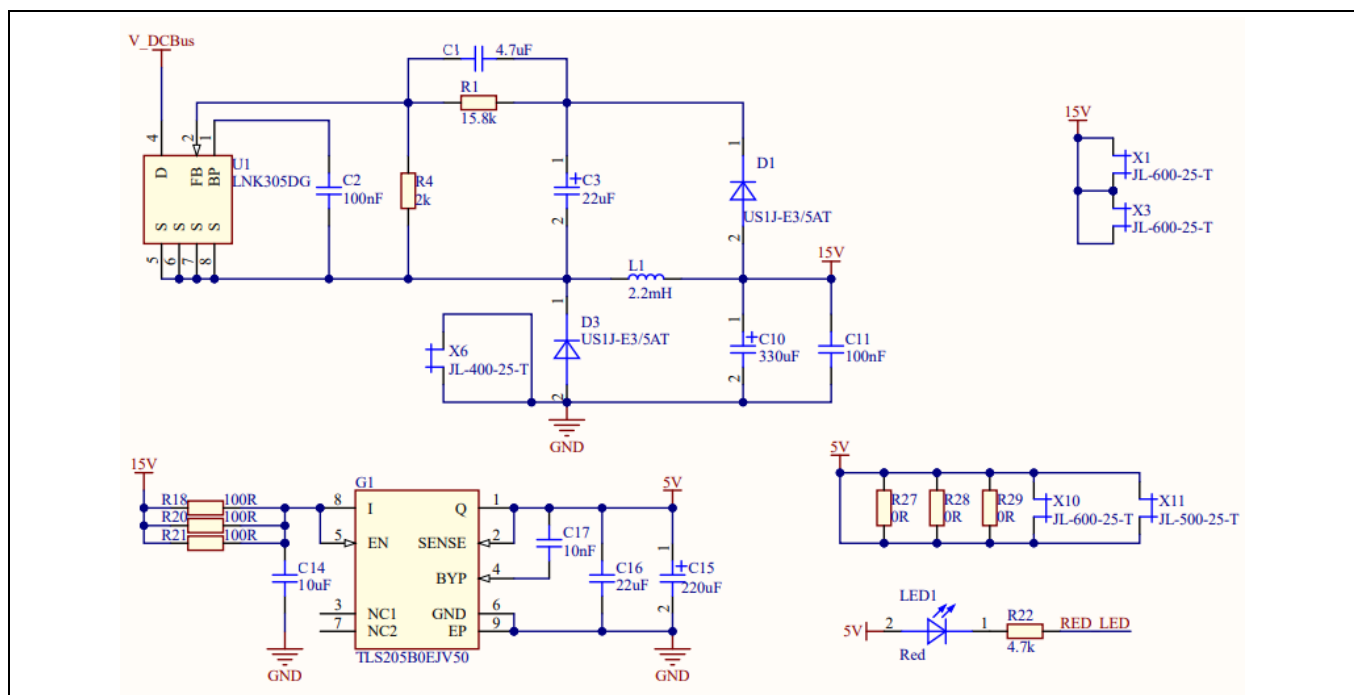
The VFO pin not only provides direct access to the NTC, but also indicates a module failure in case of undervoltage at pin VDD or in case of triggered overcurrent detection at ITRIP. [Figure 11](#) also depicts the VFO circuit of this IKCM10H60GA IPM.



**Figure 11. Hardware overcurrent circuit at pin VFO**

### 3.1.7 EMI filter and AC-DC conversion

[Figure 12](#) depicts the schematic diagram of the AC input connector to the rectified DC bus voltage. This circuit includes a passive EMI filter consisting of elements C7,C8,L2, a rectifier bridge D2, a NTC resistor RV1 and a relay K1 for soft powering-up and reducing conduction losses in steady state.



## System design

### 3.2 PCB layout

The layout of this board can be used for different voltages or power classes. The PCB has two electrical layers with 35 µm copper by default, and its size is 115 mm × 125 mm. The PCB board thickness is 1.6 mm. Contact our technical support team for more detailed information and the latest Gerber files.

[Figure 14](#) illustrates the top assembly print of the evaluation board.

[Figure 15](#) illustrates the bottom assembly print of the evaluation board.

[Figure 16](#) illustrates the bottom layer routing of the PCB.

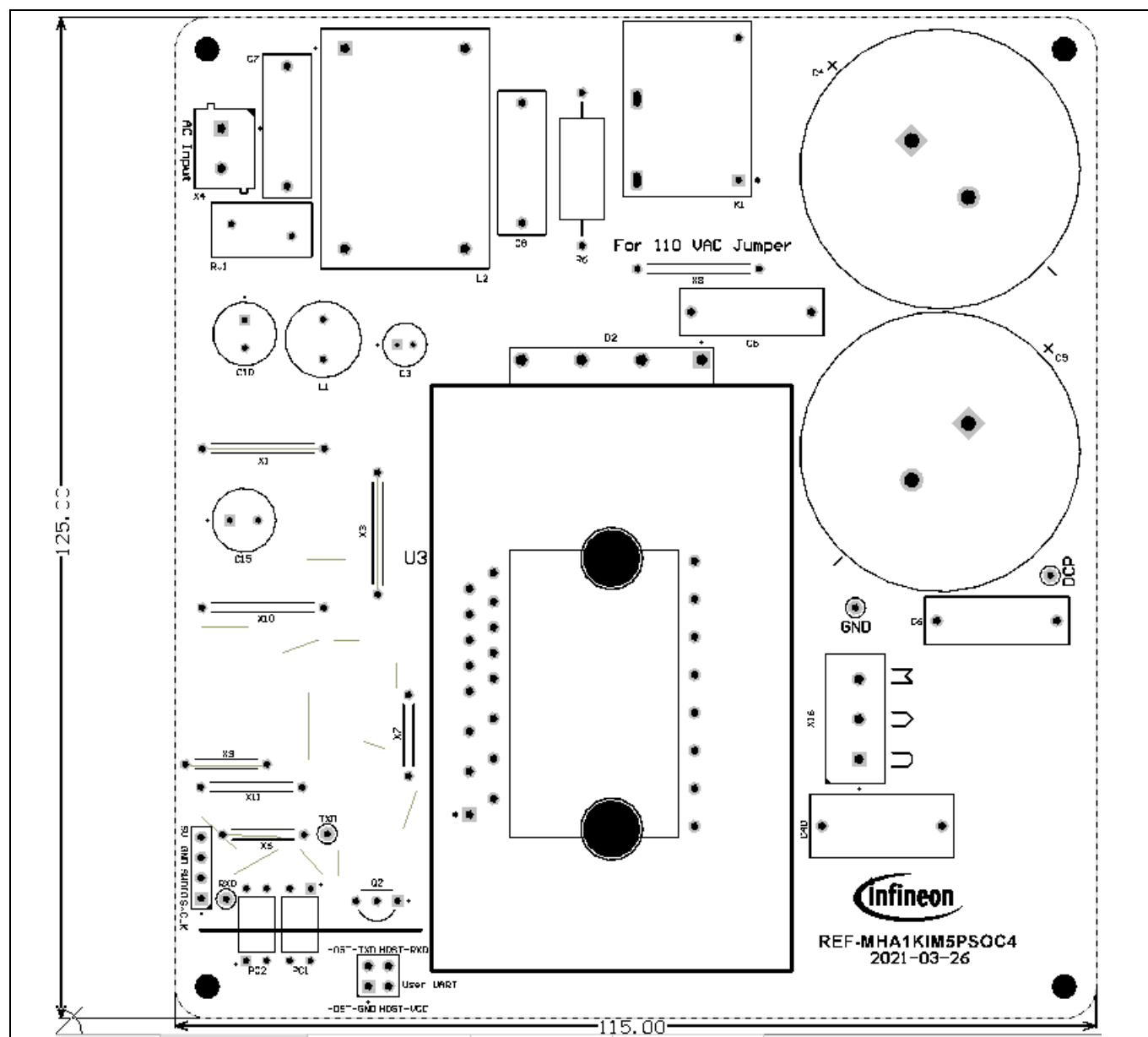


Figure 14. The top assembly print of the evaluation board

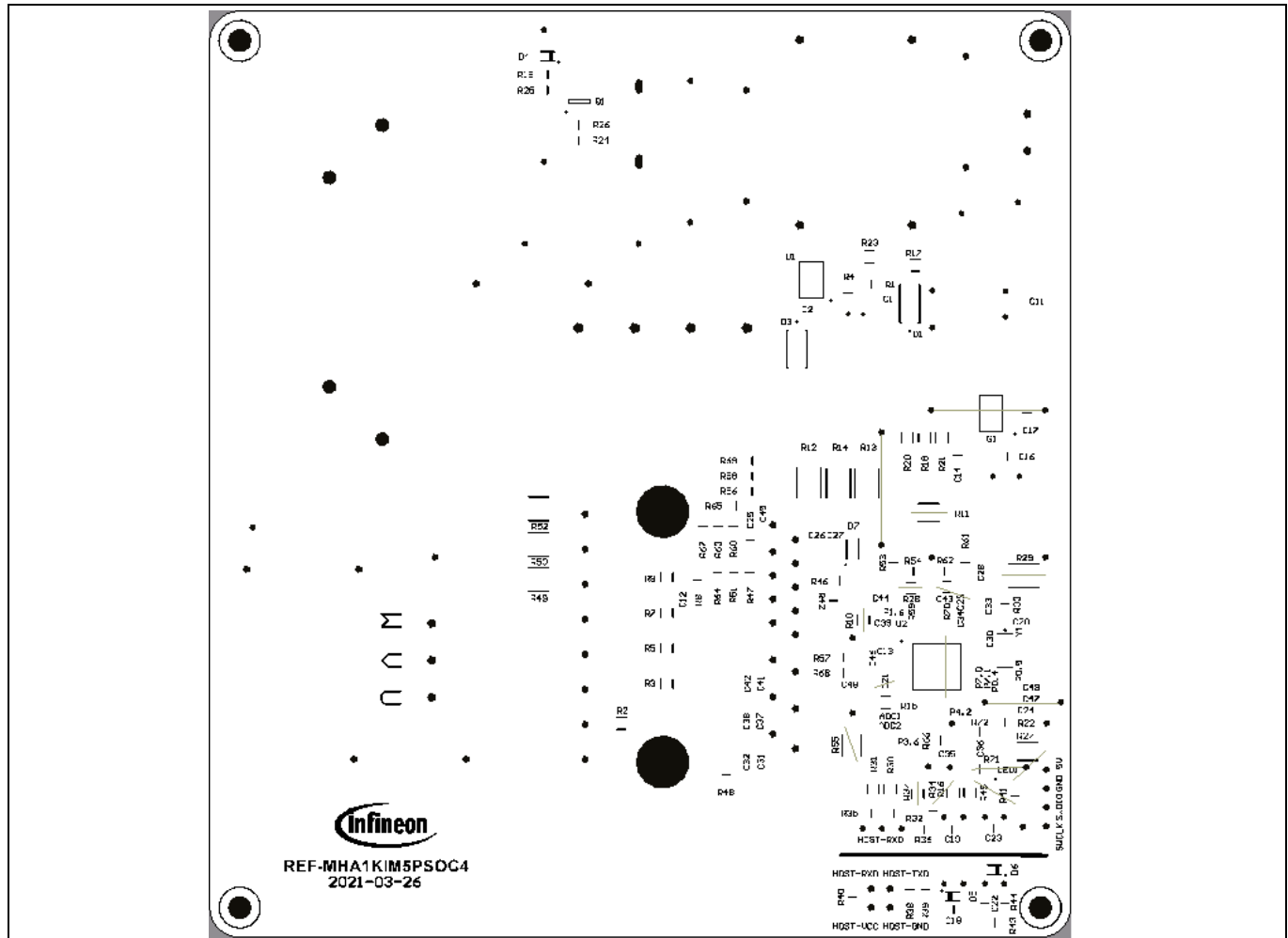


Figure 15. The bottom assembly print of the evaluation board

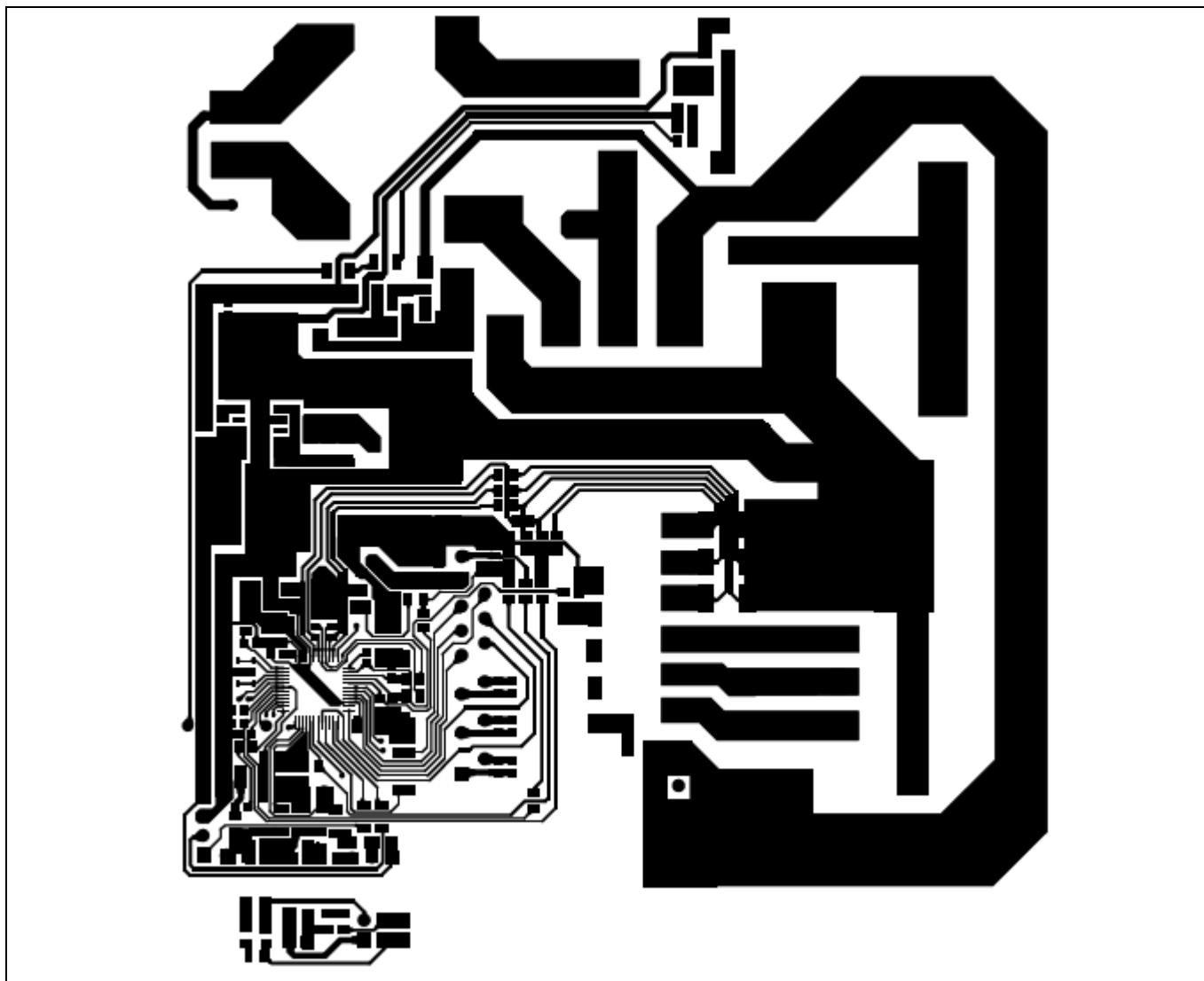


Figure 16. The bottom layer routing of the PCB

### 3.3 Bill of material (BOM)

[Table 7](#) provides the key components for the REF-MHA1KIM5PSOC4. The complete bill of material is available on the download section of the Infineon homepage. A log-in is required to download this material.

Table 7 Key components of REF-MHA1KIM5PSOC4

No.	Ref designator	Description	Manufacturer	Manufacturer P/N
1	U2	Programmable system-on-chip (PSoC)	Infineon Technologies	CY8C4146AZI-S443
2	U3	Control integrated power system (CIPOS)	Infineon Technologies	IKCM10H60GA
3	G1	Wide input range low noise 500 mA 5 V LDO	Infineon Technologies	TLS205B0EJV50
4	D4, D5, D6	Medium-power AF Schottky diode	Infineon Technologies	BAS3010A-03W

# REF-MHA1KIM5PSOC4 user guide

## PSoC® 4 home appliance board for washing machine



### System design

No.	Ref designator	Description	Manufacturer	Manufacturer P/N
5	L2	IND / STD / 2.2mH / 8A / 30% / -40 °C to 125 °C / 14mR / THT / common mode choke	Würth Elektronik	7448258022
6	C5, C6, C7, C8	CAP / FILM / 100nF / 630V / 10% / MKP (Metallized Polypropylene) / -40 °C to 105 °C	Würth Elektronik	890324025017CS
7	C4, C9	CAP / ELCO / 680uF / 450V / 20% / Aluminium electrolytic / -25 °C to 105 °C	Würth Elektronik	861141486026
8	C15	CAP / ELCO / 220uF / 35V / 20% / aluminium electrolytic / -40 °C to 105 °C	Würth Elektronik	860020574012
9	X16	Terminal block, 3Pins, 5.00mm pitch, board to cable	Würth Elektronik	691102710003



## 4 System performance

Figure 17 shows the start-up wave form of a BLDC motor in a drum washing machine system, which shows the start-up characteristics of our washing machine solution:

- The initial position of rotor is detected by a high-frequency injection method to start up at zero speed.
- Direct closed-loop start-up: no open-loop positioning and driving process, no clamping current when motor stops, shorter start-up time, and lower start-up current.

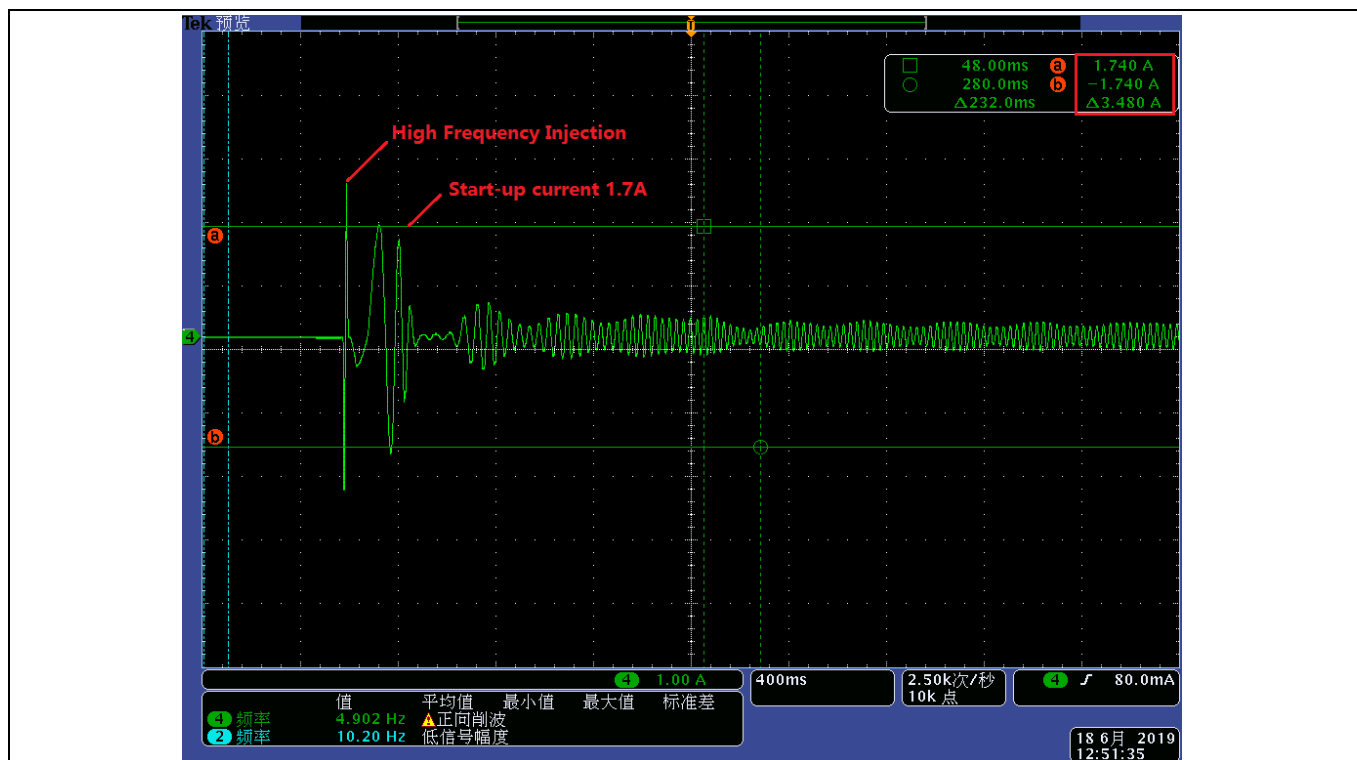


Figure 17. Start-up waveform of BLDC drum washing machine

## 5 Appendices

### 5.1 Abbreviations and definitions

Table 8 Abbreviations

Abbreviation	Meaning
BLDC drum	Brushless DC drum
DD drum	Direct drive drum
FOC	Field oriented control
SVPWM	Space vector pulse width modulation
HVIC	High voltage IC
CW	Clockwise
CCW	Counterclockwise
OOB	Out of balance
PMSM	Permanent magnet synchronous motor

### Revision history

Document version	Date of release	Description of changes
Revision 1.0	14/09/2021	Initial version

**Trademarks**

All referenced product or service names and trademarks are the property of their respective owners.

**Edition 2021-09-14**

**Published by**

**Infineon Technologies AG**

**81726 Munich, Germany**

**© 2021 Infineon Technologies AG.**

**All Rights Reserved.**

**Do you have a question about this document?**

**Email:** [erratum@infineon.com](mailto:erratum@infineon.com)

**Document reference**

**UG-2021-36**

For further information on the product, technology, delivery terms and conditions and prices please contact your nearest Infineon Technologies office ([www.infineon.com](http://www.infineon.com)).

**WARNINGS**

Due to technical requirements products may contain dangerous substances. For information on the types in question please contact your nearest Infineon Technologies office.

Except as otherwise explicitly approved by Infineon Technologies in a written document signed by authorized representatives of Infineon Technologies, Infineon Technologies' products may not be used in any applications where a failure of the product or any consequences of the use thereof can reasonably be expected to result in personal injury.