

Infiniteon Toolbox Getting Started guide

<https://www.infineon.com/infineontoolbox>



Infiniteon
Toolbox



Infineon Toolbox First steps



The screenshot shows the Infineon Toolbox landing page. At the top is the Infineon logo and navigation links: Newsletter, Kontakt, Bezugsquellen, Deutsch, myInfineon, and Warenkorb. Below this is a search bar and a list of categories: Produkte, Applikationen, Tools (highlighted), Über Infineon, Einblicke, and Karriere. The main content area features a large banner image with a person working on a circuit board, a city skyline, and a circuit board. A 'Download now' button is overlaid on the banner. To the right of the banner is a link to 'Download Getting Started Infineon Toolbox Guide' (01_00 | Dec 18, 2018 | PDF | 874 kb). Below the banner, the text 'Welcome to Infineon Toolbox' is followed by a list of features: 'Quickly install tools by name or QR code.', 'View and start installed tools from built-in launcher.', and 'Receive update notifications and updates in place.' Below this is a section 'Get started by following these easy steps:' with three steps: 'Step 1: Download', 'Step 2: Install', and 'Step 3: Launch'. Each step is accompanied by a small image showing the respective action. Callout 1 points to the 'Download now' button, callout 2 points to the 'Step 2: Install' button, and callout 3 points to the 'Download Getting Started Infineon Toolbox Guide' link.

1. Download now

2. Step 2: Install

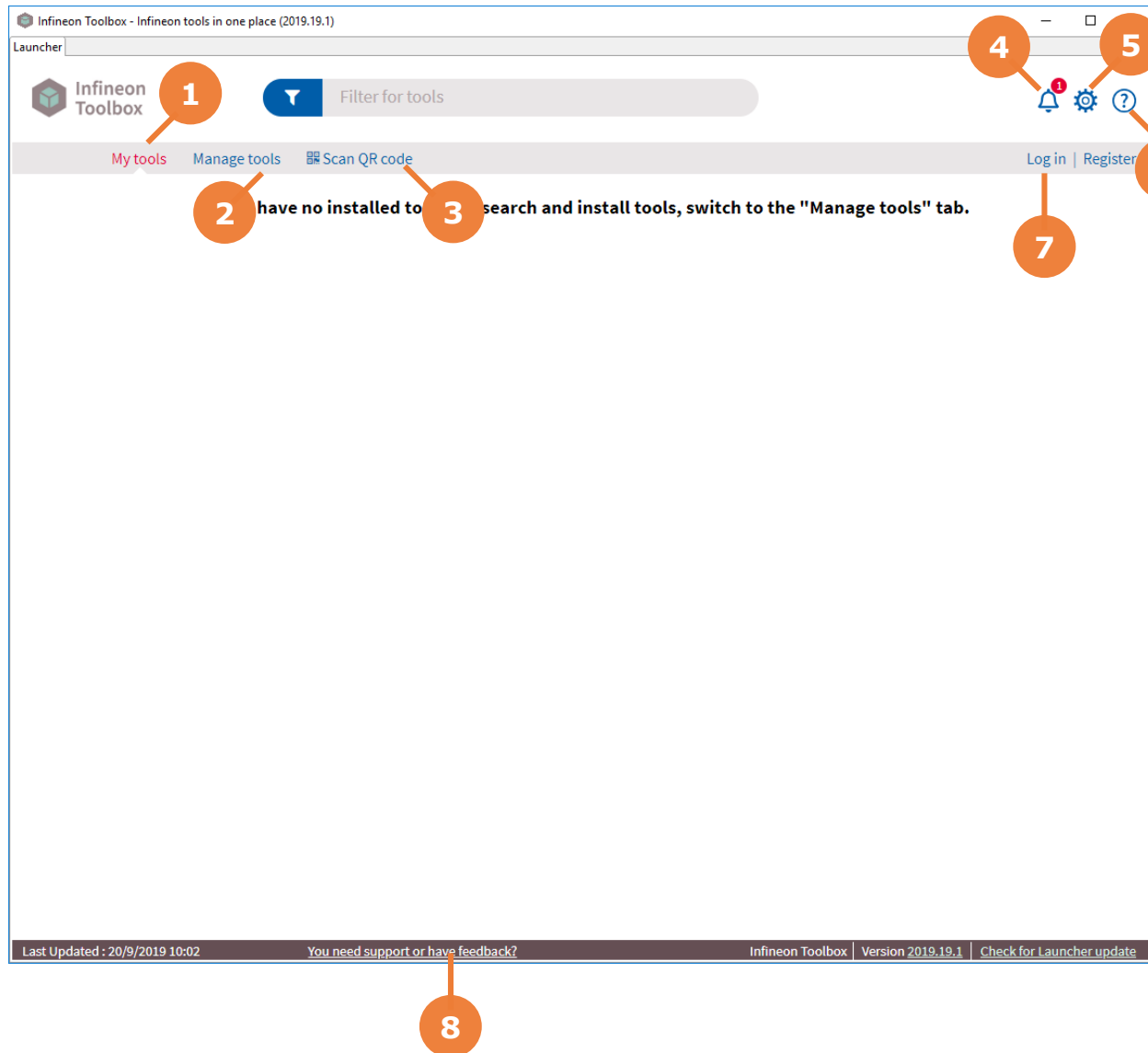
3. Download Getting Started Infineon Toolbox Guide

To get started visit

<https://www.infineon.com/infineontoolbox>

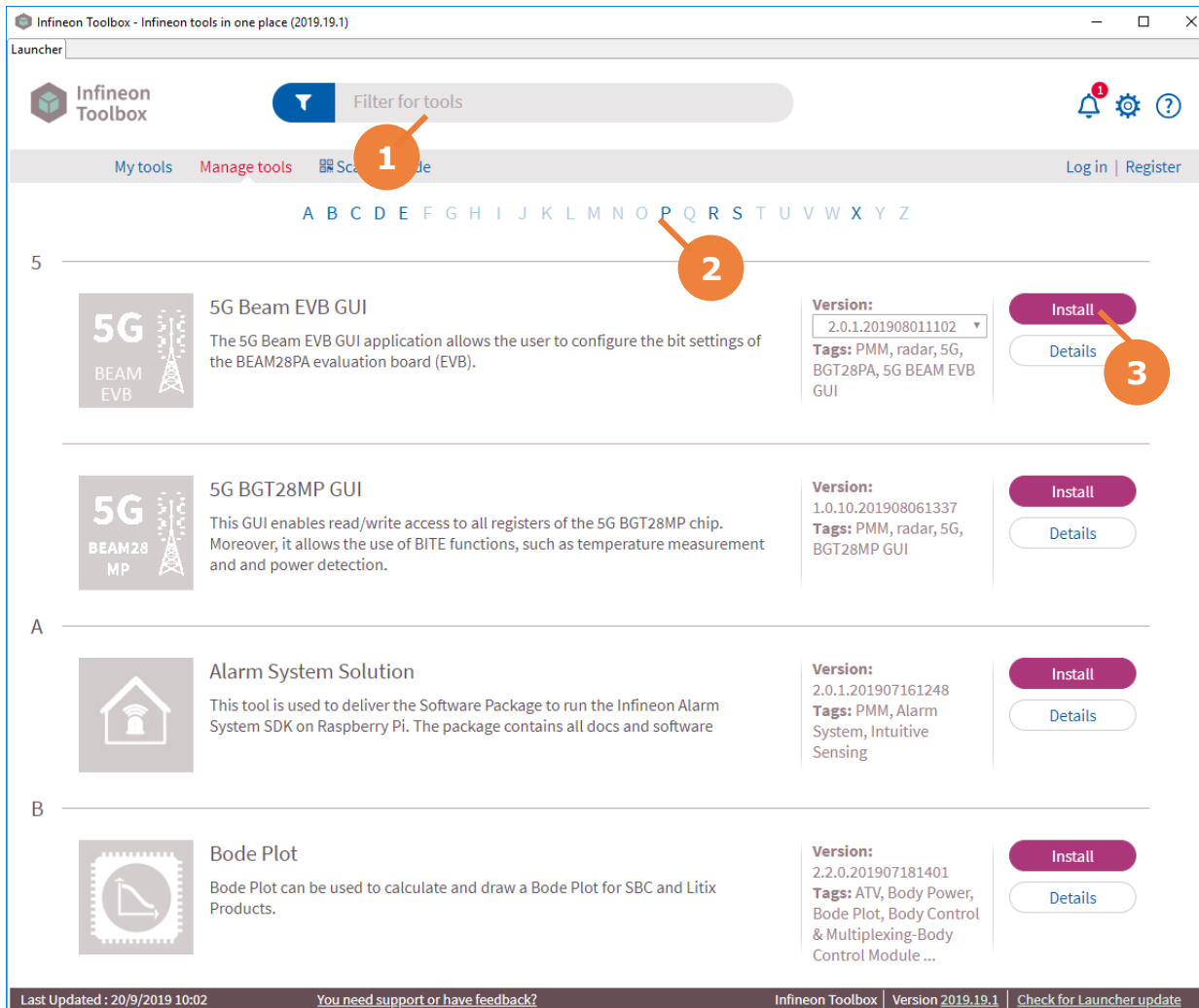
1. Download Infineon Toolbox
2. Follow step-by-step instructions
3. Download *Getting Started Guide* (this document in latest version)

Infineon Toolbox Launch screen



1. Display all installed tools
2. Search for and install tools
3. Scan Toolbox QR code or enter QR code ID manually
4. Displays important notifications for Toolbox
5. Settings menu
6. Help and support information for Toolbox and installed tools
7. Log in to access protected tools
8. Contact Infineon support

Infineon Toolbox Manage tools

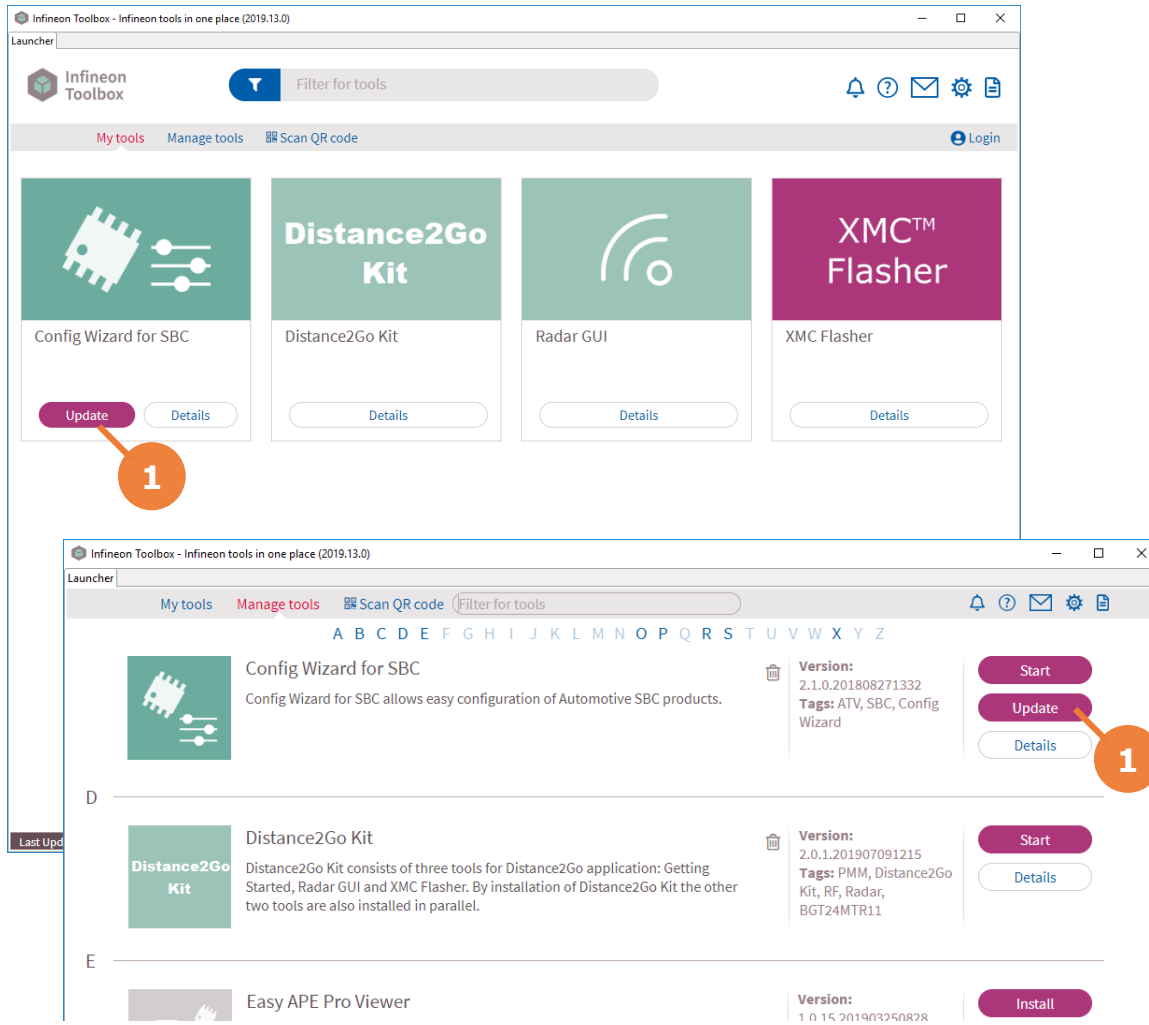


1. Filter displayed tools by name
2. Scroll list to tools with matching starting letter
3. Click to install tool

Upon installation a reload of Toolbox is required to activate the tool.

Additional, required, tools may be installed automatically.

Infineon Toolbox Updating tools



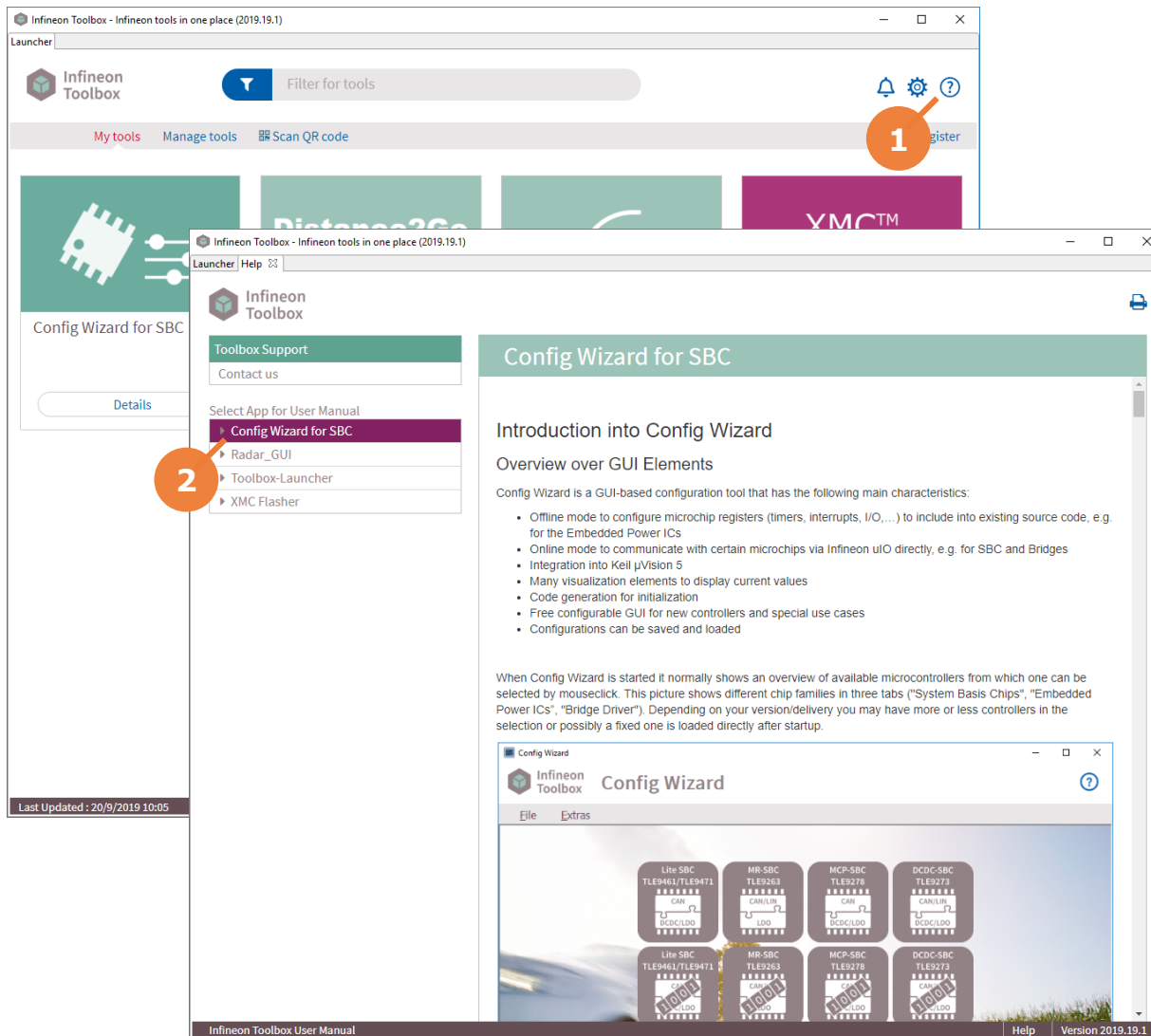
1. If a newer version of a tool is available an "Update" button will be displayed.

Updates will also update any dependent other tools that were installed automatically.

The Toolbox must be reloaded to activate updated tools.

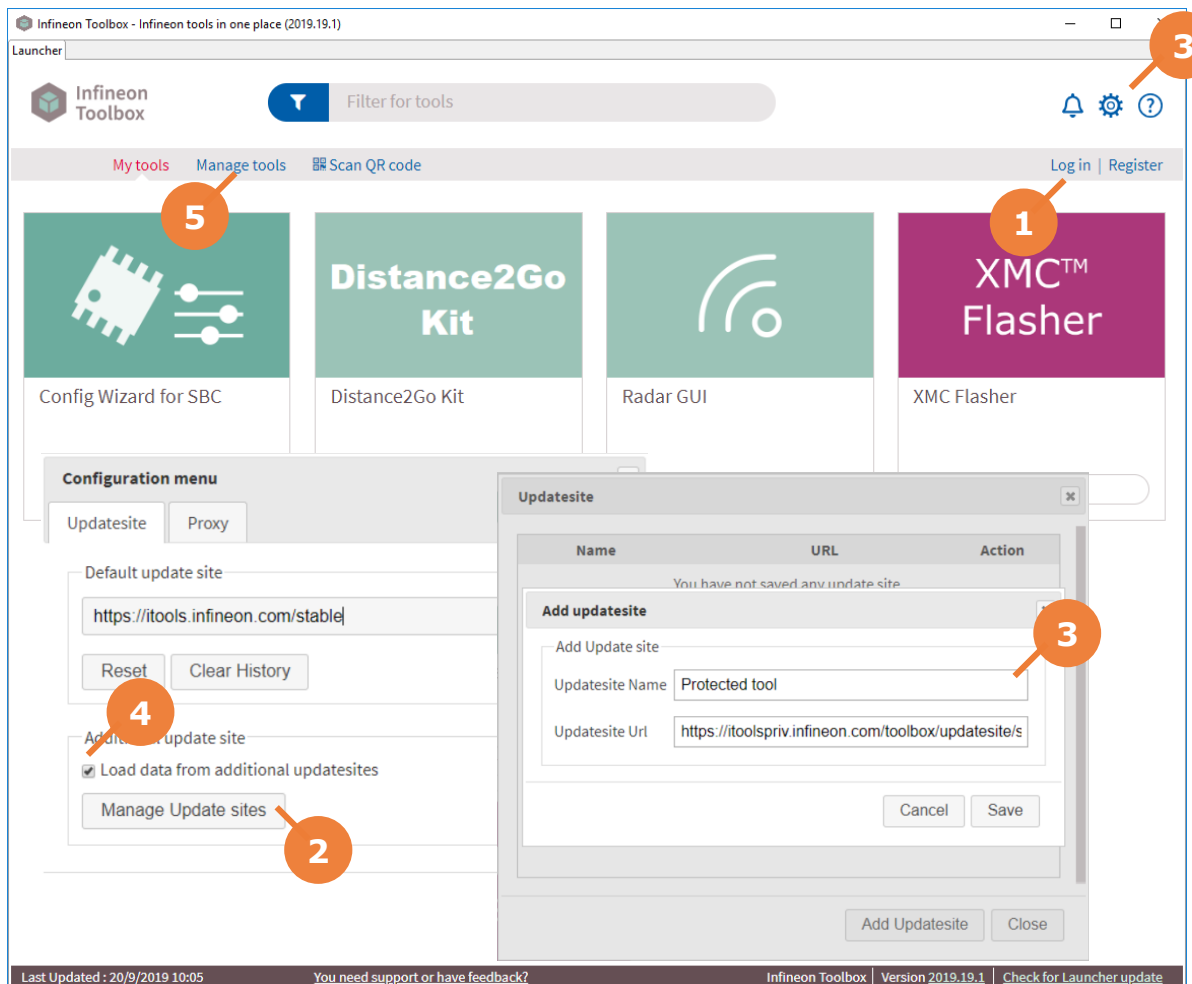
If multiple tools need updating you can perform only a single reload after all tool updates are done.

Infineon Toolbox Help and further information



1. The most recent and up-to-help information is available in the Toolbox Help Menu. The help menu contains help on the main Infineon Toolbox application ("Launcher") and installed tools.
2. Consult tool help pages for tool-specific requirements and information.

Accessing restricted tools



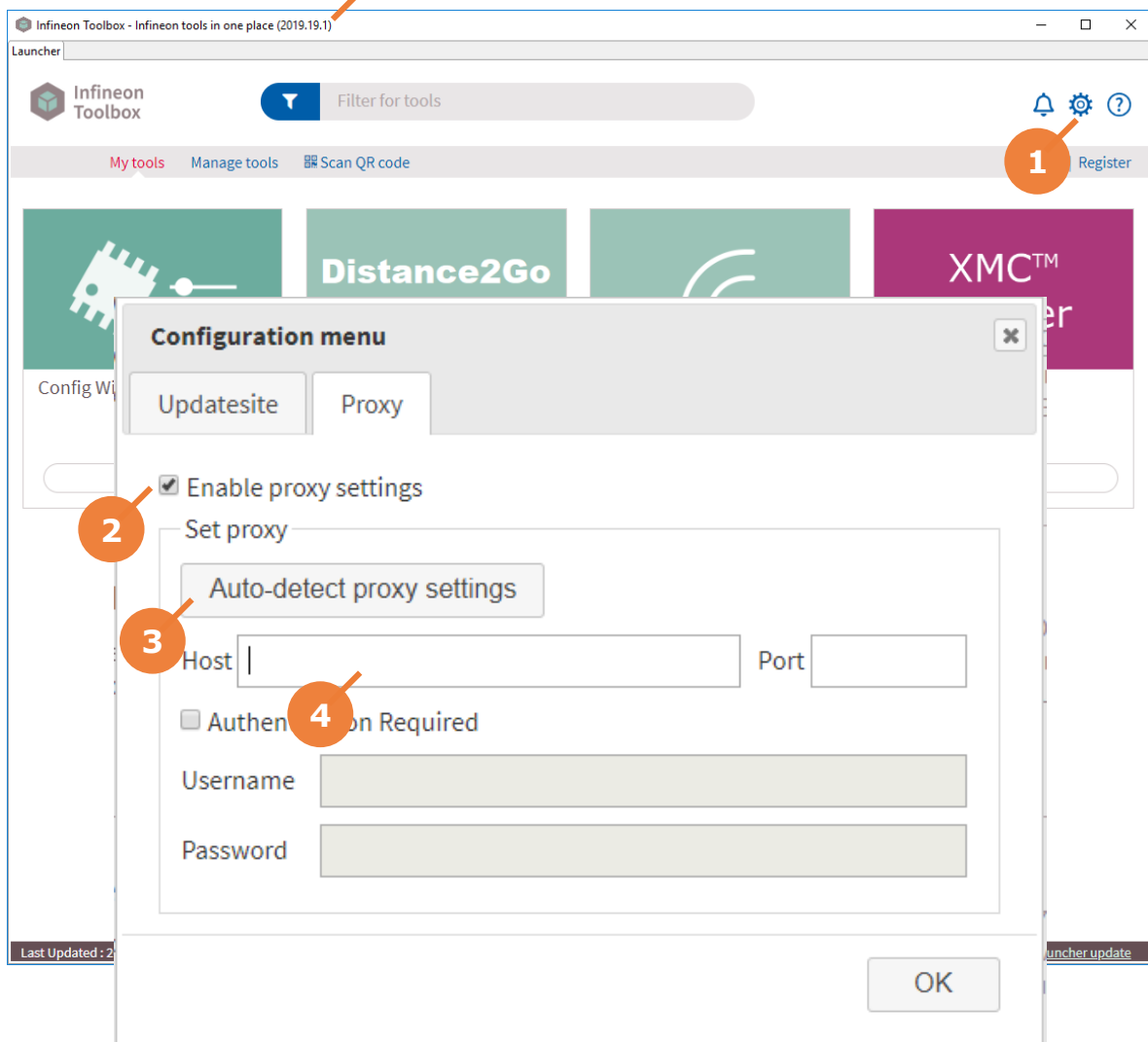
Infineon will provide you the custom URL required to access the restricted tool.

Follow these steps to install:

1. Log in with your myinfineon.com account
2. Open settings and select "Manage Update sites"
3. Enter provided URL as additional update site, save and close
4. Enable checkbox and close settings dialog.
5. Switch to "Manage tools" and proceed with install as usual.

Requires Toolbox launcher version 2019.13.0 or later.

Proxy configuration



1. Depending on network configuration it may be necessary to configure proxy settings in the settings dialog.
2. On Proxy tab enable proxy settings
3. Auto-detect settings
4. Settings can also be manually provided or modified
5. Clicking OK will apply and test settings. If connection errors persist please contact your IT group for further support.

Requesting Support

The screenshot shows the Infineon Toolbox interface. At the top, there's a 'Launcher' section with a search bar and a 'Filter for tools' button. Below this, there are tabs for 'My tools', 'Manage tools', and 'Scan QR code'. The main area displays four tool cards: 'Config Wizard for SBC', 'Distance2Go Kit', 'Radar GUI', and 'XMC™ Flasher'. The 'Radar GUI' card is highlighted with a callout '2'. Below the cards, there's a 'Details' button for each tool. The 'Details' button for the 'Radar GUI' is highlighted with a callout '3'. On the right side, there's a 'Contact us' section with a 'Generate Support Document' button highlighted with a callout '5'. At the bottom left, there's a 'Last Updated' date and a 'You need support or have feedback' link highlighted with a callout '4'. At the bottom right, there's a 'Register' button highlighted with a callout '1'.

1. Support is available from the support link in Infineon Toolbox or by visiting www.infineon.com/support

Please provide

2. Tool name
3. Tool version
4. Toolbox version
5. Alternatively, or when requested, you can also generate a Support Document containing additional logging information



Part of your life. Part of tomorrow.

