



Please note that Cypress is an Infineon Technologies Company.

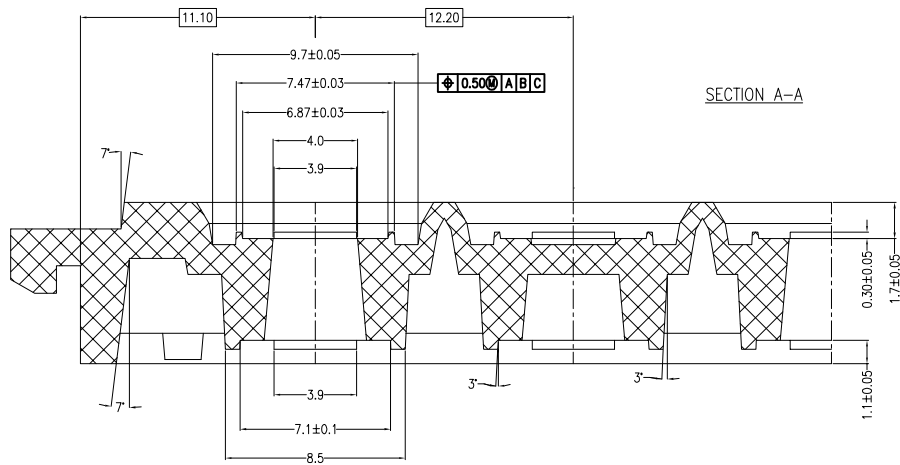
The document following this cover page is marked as “Cypress” document as this is the company that originally developed the product. Please note that Infineon will continue to offer the product to new and existing customers as part of the Infineon product portfolio.

Continuity of document content

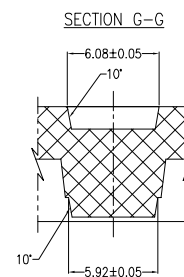
The fact that Infineon offers the following product as part of the Infineon product portfolio does not lead to any changes to this document. Future revisions will occur when appropriate, and any changes will be set out on the document history page.

Continuity of ordering part numbers

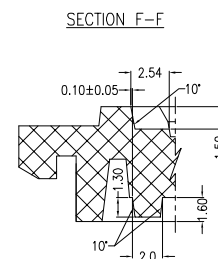
Infineon continues to support existing part numbers. Please continue to use the ordering part numbers listed in the datasheet for ordering.



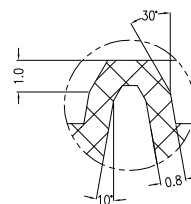
SECTION A-A



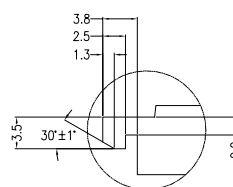
SECTION G-G



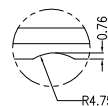
SECTION F-F



DETAIL E

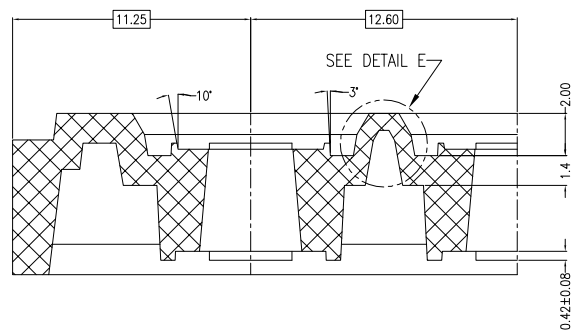


DETAIL D

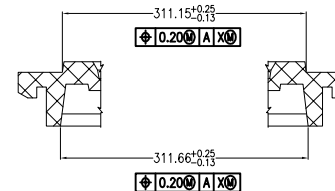


DETAIL C

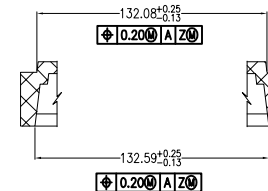
NOTE:
SCALLOP IS CENTERED
ON SIDE OF TRAY




SECTION B-B



SECTION H-H



SECTION J-J

UNLESS OTHERWISE SPECIFIED		DESIGNED BY	DATE		
ALL DIMENSIONS ARE IN MILLIMETERS		DRAWN	DATE		
STANDARD TOLERANCES ON:		XVC	10/08/12	TITLE	
DECIMALS	ANGLES	CHK BY	DATE	TRAY, TQFP 7X7X1.4 (PEAK)	
XX ± 0.25	± 0.5°	ZJL	10/08/12	SIZE	PART NO.
XXX ± 0.13		APPROVED BY	DATE	TA7714A-x	DWG NO.
XXXX		QAD	10/08/12	51-52030	REV
MATERIAL	SEE NOTES	APPROVED BY	DATE		xB
		KGL	10/08/12		
FINISH				SCALE	SHEET
				FIT TO SCALE	2 OF 2