

Please note that Cypress is an Infineon Technologies Company.

The document following this cover page is marked as “Cypress” document as this is the company that originally developed the product. Please note that Infineon will continue to offer the product to new and existing customers as part of the Infineon product portfolio.

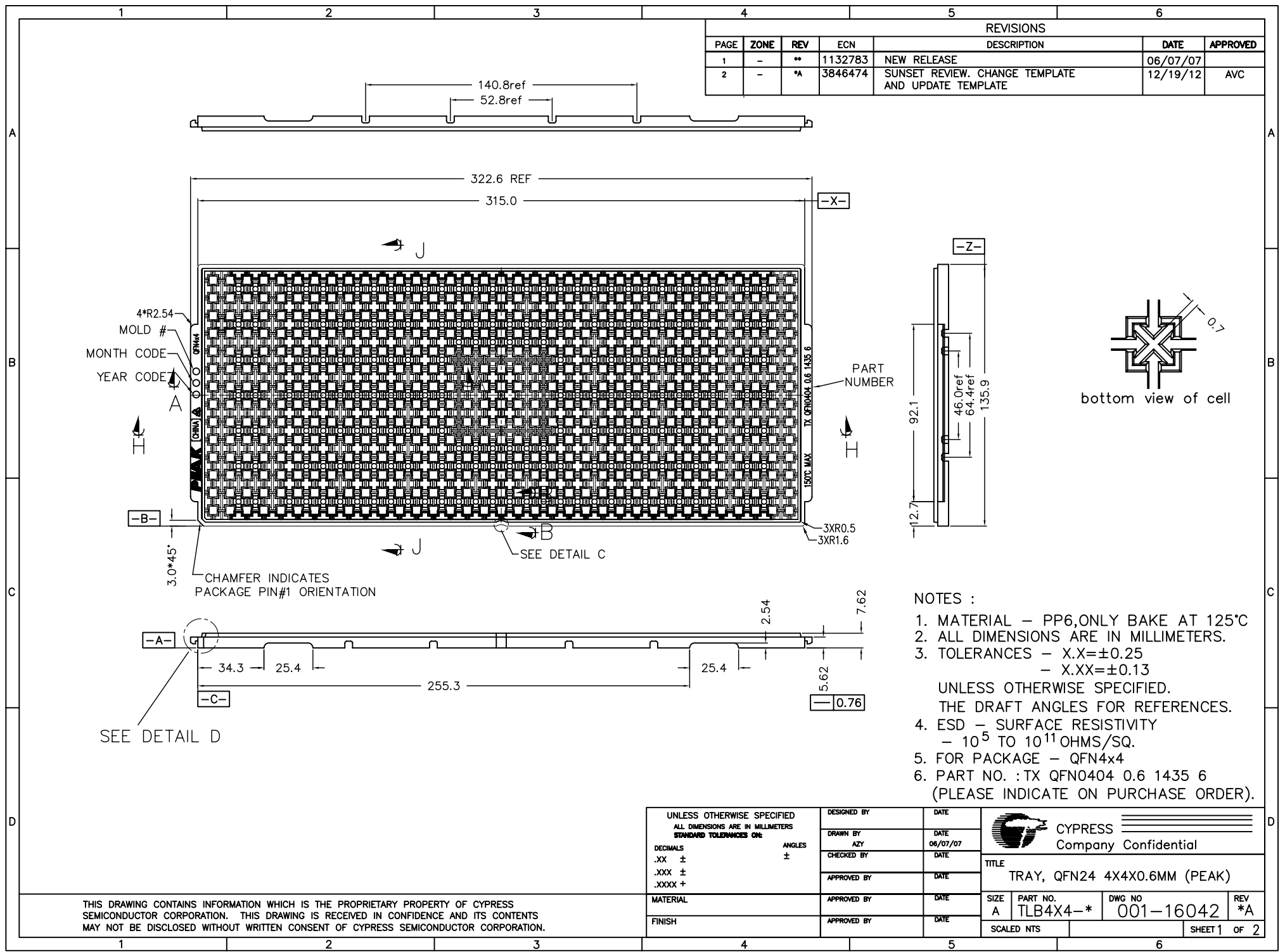
Continuity of document content

The fact that Infineon offers the following product as part of the Infineon product portfolio does not lead to any changes to this document. Future revisions will occur when appropriate, and any changes will be set out on the document history page.


Continuity of ordering part numbers

Infineon continues to support existing part numbers. Please continue to use the ordering part numbers listed in the datasheet for ordering.


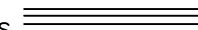
REVISIONS					
PAGE	ZONE	REV	ECN	DESCRIPTION	DATE
1	-	**	1132783	NEW RELEASE	06/07/07
2	-	*A	3846474	SUNSET REVIEW. CHANGE TEMPLATE AND UPDATE TEMPLATE	12/19/12
					APPROVED
					AVC



THIS DRAWING CONTAINS INFORMATION WHICH IS THE PROPRIETARY PROPERTY OF CYPRESS SEMICONDUCTOR CORPORATION. THIS DRAWING IS RECEIVED IN CONFIDENCE AND ITS CONTENTS MAY NOT BE DISCLOSED WITHOUT WRITTEN CONSENT OF CYPRESS SEMICONDUCTOR CORPORATION.

UNLESS OTHERWISE SPECIFIED ALL DIMENSIONS ARE IN MILLIMETERS STANDARD TOLERANCES ON:		DESIGNED BY	DATE	 CYPRESS Company Confidential	
DECIMALS	ANGLES	DRAWN BY	DATE		
.XX ±	±	AZY	06/07/07	TITLE TRAY, QFN24 4X4X0.6MM (PEAK)	
.XXX ±		CHECKED BY	DATE		
.XXXX ±		APPROVED BY	DATE	SIZE PART NO. DWG NO. REV A TLB4X4-* 001-16042 *A	
MATERIAL		APPROVED BY	DATE		
FINISH		APPROVED BY	DATE	SCALED NTS SHEET 1 OF 2	

Technical drawing showing two cross-sectional views of a mechanical part. The left view is a full cross-section with dimensions: 7.90, 8.80, 4.20 ± 0.08, 0.78, 1.2 REF, 1.59, 7°, 4.10 ± 0.08. The right view is a partial cross-section with dimensions: 5°, 0.50, 1.4, 2.10, 1.2, 3.67 ± 0.10.

		CYPRESS Company Confidential			
TITLE TRAY, QFN24 4X4X0.6MM (PEAK)					
SIZE	PART NO.	DWG NO	REV		
A	TLB4X4-*	001-16042	*A		
SCALED NTS			SHEET 2 OF 2		