



Please note that Cypress is an Infineon Technologies Company.

The document following this cover page is marked as “Cypress” document as this is the company that originally developed the product. Please note that Infineon will continue to offer the product to new and existing customers as part of the Infineon product portfolio.

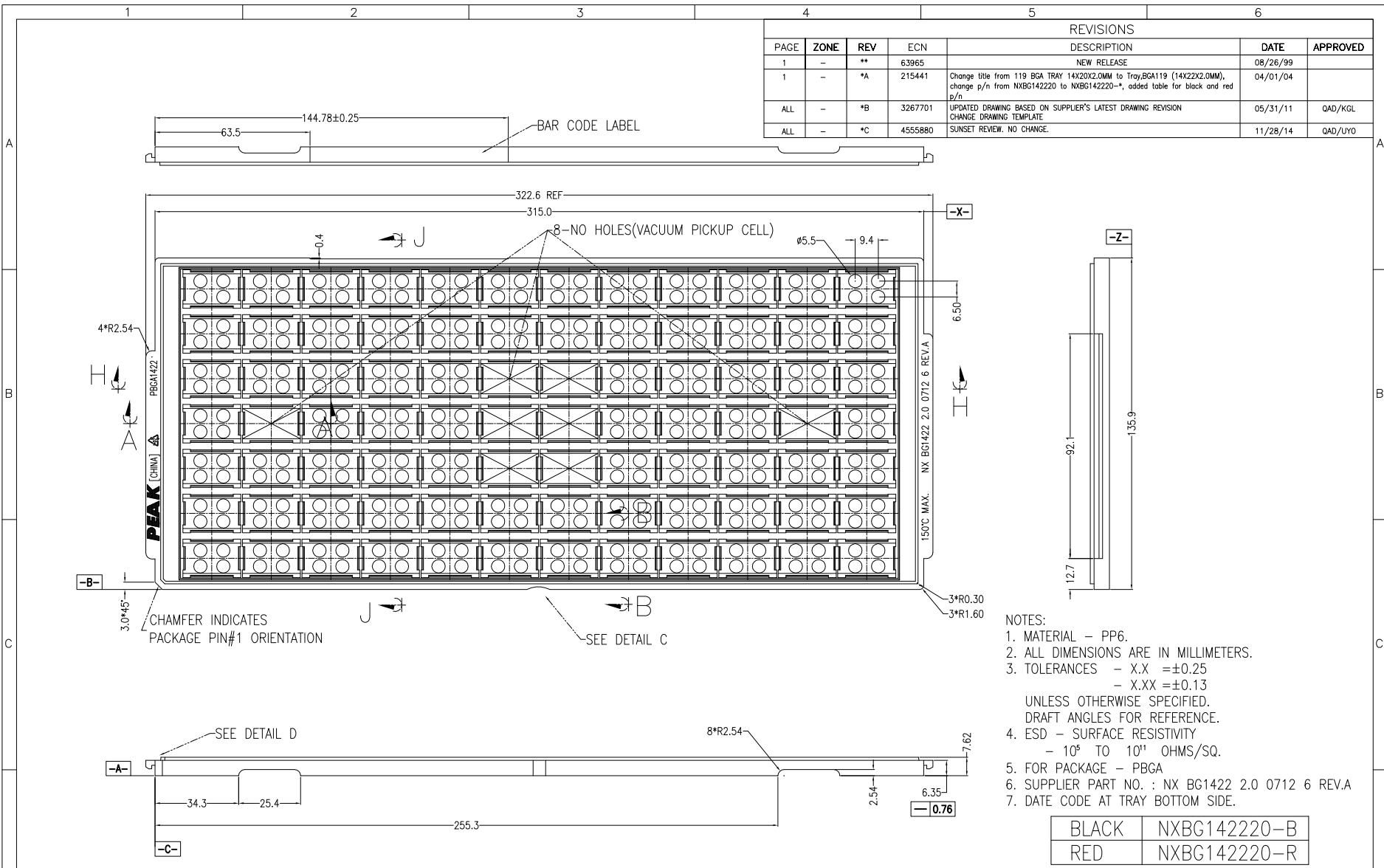
Continuity of document content

The fact that Infineon offers the following product as part of the Infineon product portfolio does not lead to any changes to this document. Future revisions will occur when appropriate, and any changes will be set out on the document history page.

Continuity of ordering part numbers

Infineon continues to support existing part numbers. Please continue to use the ordering part numbers listed in the datasheet for ordering.

REVISIONS						
PAGE	ZONE	REV	ECN	DESCRIPTION	DATE	APPROVED
1	-	**	63965	NEW RELEASE	08/26/99	
1	-	*A	215441	Change title from 119 BGA TRAY 14X20X2.0MM to Tray,BGA119 (14X22X2.0MM), change p/n from NXBG142220 to NXBG142220-*, added table for black and red p/n	04/01/04	
ALL	-	*B	3267701	UPDATED DRAWING BASED ON SUPPLIER'S LATEST DRAWING REVISION CHANGE DRAWING TEMPLATE	05/31/11	QAD/KGL
ALL	-	*C	4555880	SUNSET REVIEW. NO CHANGE.	11/28/14	QAD/UYO

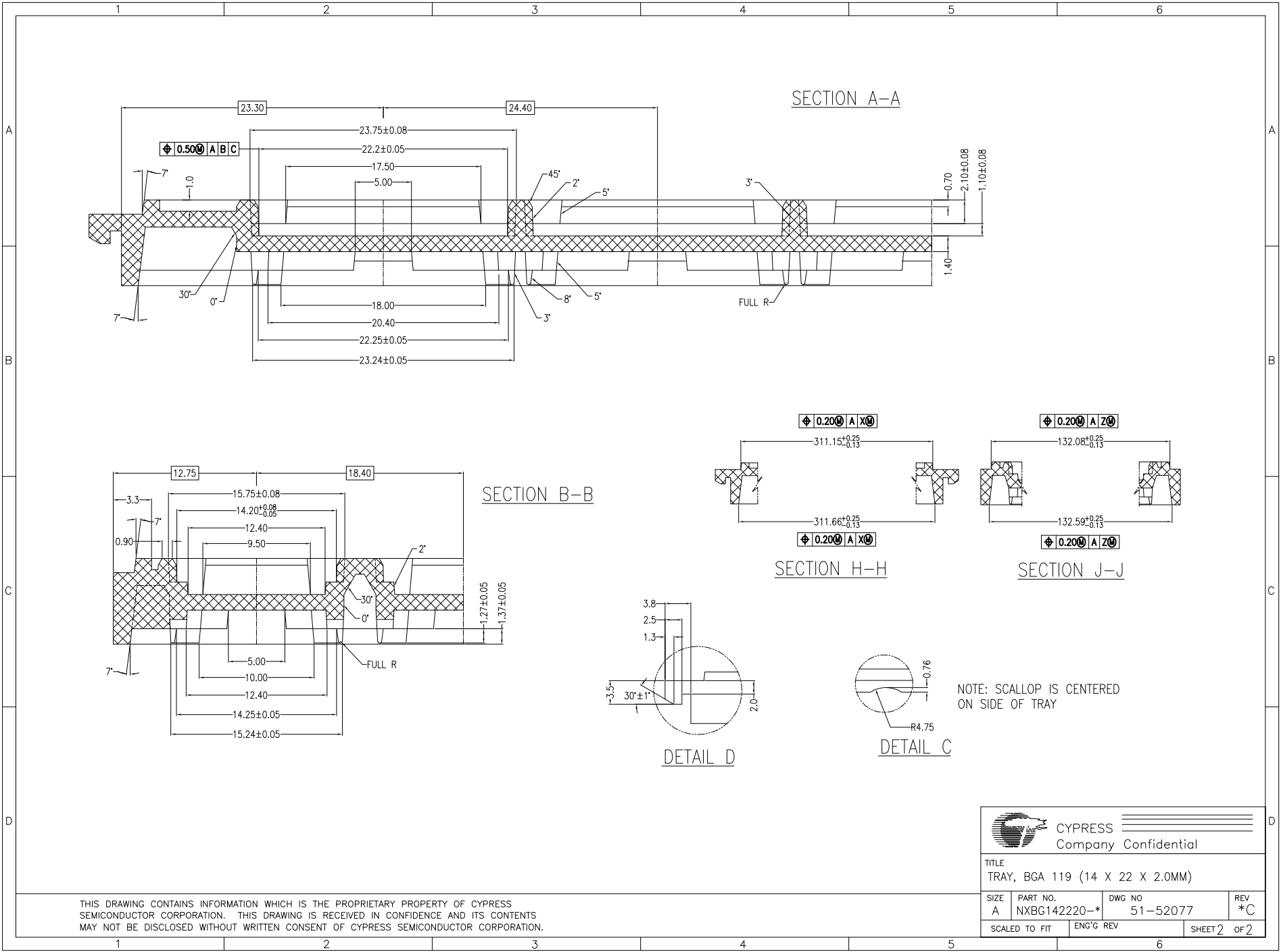


- NOTES:
1. MATERIAL - PP6.
 2. ALL DIMENSIONS ARE IN MILLIMETERS.
 3. TOLERANCES - X.X = ±0.25
- X.XX = ±0.13
UNLESS OTHERWISE SPECIFIED.
DRAFT ANGLES FOR REFERENCE.
 4. ESD - SURFACE RESISTIVITY
- 10⁹ TO 10¹¹ OHMS/SQ.
 5. FOR PACKAGE - PBGA
 6. SUPPLIER PART NO. : NX BG1422 2.0 0712 6 REV.A
 7. DATE CODE AT TRAY BOTTOM SIDE.


BLACK	NXBG142220-B
RED	NXBG142220-R

UNLESS OTHERWISE SPECIFIED ALL DIMENSIONS ARE IN MILLIMETERS STANDARD TOLERANCES ON:		DESIGNED BY	DATE	CYPRESS Company Confidential
DECIMALS	ANGLES	DRAWN BY	DATE	
.X ± 0.25	± 0.5°	ADO	05/31/11	
.XX ± 0.13		CHECKED BY	DATE	
.XXX ± 0.13		AEL	05/31/11	TITLE
		APPROVED BY	DATE	TRAY, BGA 119 (14 X 22 X 2.0MM)
		QAD	11/28/14	SIZE
MATERIAL	SEE NOTES	APPROVED BY	DATE	A
FINISH		UYO	11/28/14	PART NO.
		APPROVED BY	DATE	NXBG142220-*
				DWG NO
				51-52077
				REV
				*C
				SCALED TO FIT
				ENG'G REV
				SHEET 1 OF 2

THIS DRAWING CONTAINS INFORMATION WHICH IS THE PROPRIETARY PROPERTY OF CYPRESS SEMICONDUCTOR CORPORATION. THIS DRAWING IS RECEIVED IN CONFIDENCE AND ITS CONTENTS MAY NOT BE DISCLOSED WITHOUT WRITTEN CONSENT OF CYPRESS SEMICONDUCTOR CORPORATION.



THIS DRAWING CONTAINS INFORMATION WHICH IS THE PROPRIETARY PROPERTY OF CYPRESS SEMICONDUCTOR CORPORATION. THIS DRAWING IS RECEIVED IN CONFIDENCE AND ITS CONTENTS MAY NOT BE DISCLOSED WITHOUT WRITTEN CONSENT OF CYPRESS SEMICONDUCTOR CORPORATION.

 CYPRESS Company Confidential			
TITLE TRAY, BGA 119 (14 X 22 X 2.0MM)			
SIZE A	PART NO. NXBG142220-*	DWG NO 51-52077	REV *C
SCALED TO FIT		ENG'G REV	SHEET 2 OF 2