



Please note that Cypress is an Infineon Technologies Company.

The document following this cover page is marked as “Cypress” document as this is the company that originally developed the product. Please note that Infineon will continue to offer the product to new and existing customers as part of the Infineon product portfolio.

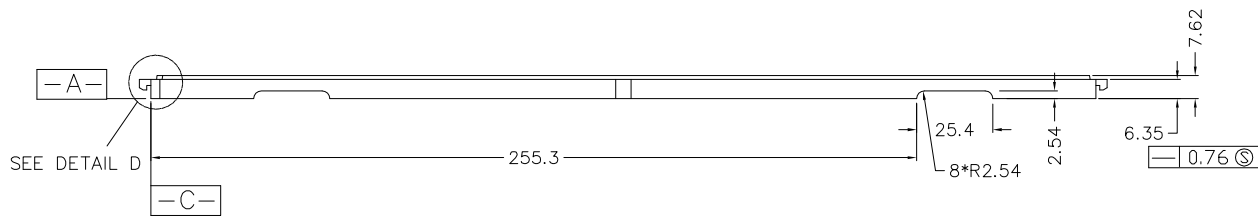
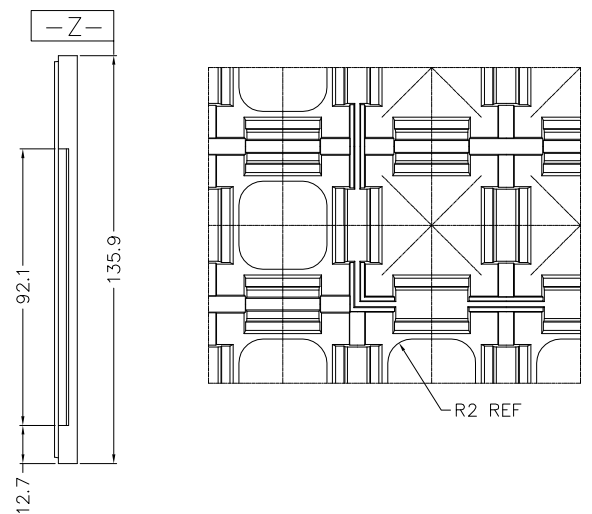
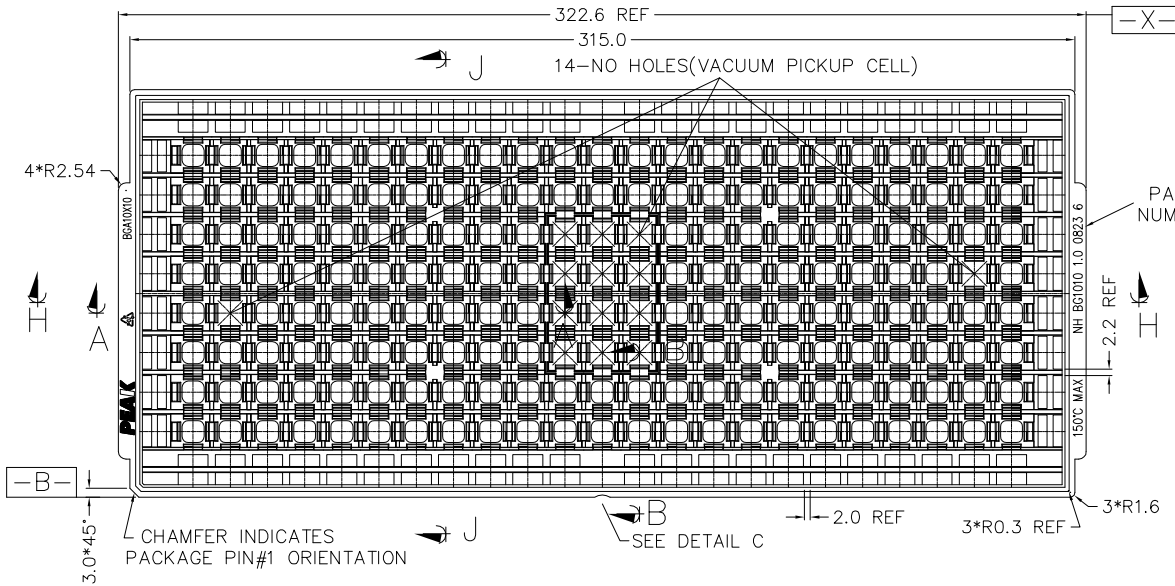
Continuity of document content

The fact that Infineon offers the following product as part of the Infineon product portfolio does not lead to any changes to this document. Future revisions will occur when appropriate, and any changes will be set out on the document history page.

Continuity of ordering part numbers


Infineon continues to support existing part numbers. Please continue to use the ordering part numbers listed in the datasheet for ordering.

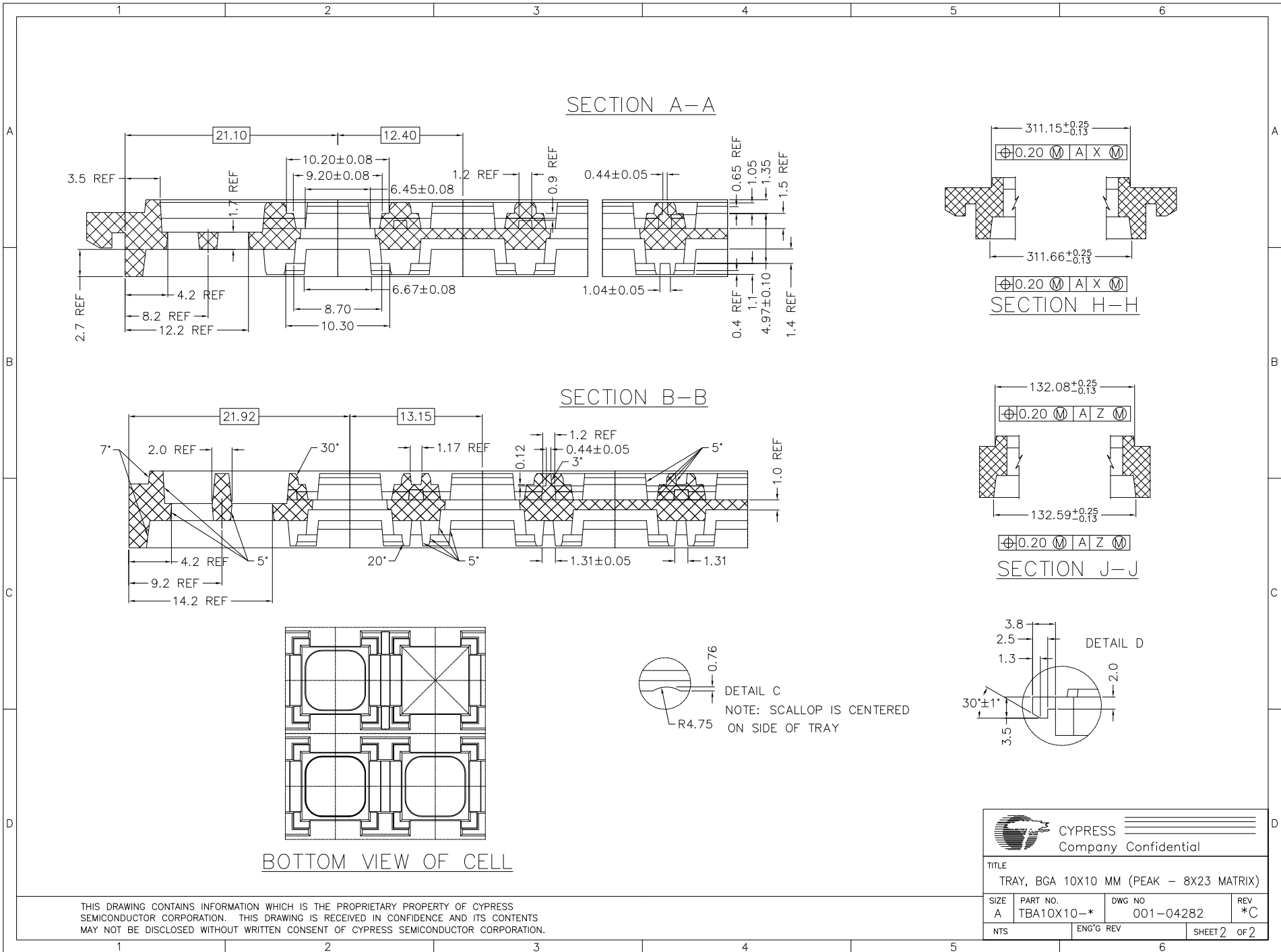
REVISIONS						
PAGE	ZONE	REV	ECN	DESCRIPTION	DATE	APPROVED
1	-	**	392120	NEW RELEASE	08/16/05	
ALL	-	*A	3029508	CHANGE DRAWING TEMPLATE	09/15/10	QAD/UYO
ALL	-	*B	3542986	CHANGE TITLE FROM TRAY, BGA 10 X 10 MM TO TRAY, BGA 10X10 MM (PEAK - 8X23 MATRIX) CORRECT PART NO. FROM TLF10X10 TO TBA10X10-* REMOVE RECYCLE WITH SEMICYCLE VIEW ADDED STANDARD TOLERANCE	03/06/12	QAD/AZY
ALL	-	*C	4538791	SUNSET REVIEW. NO CHANGE.	10/17/14	QAD/UYO




- NOTES :
1. MATERIAL - PP6.
 2. ALL DIMENSIONS ARE IN MILLIMETERS.
 3. TOLERANCES - X.X=±0.25
- X.XX=±0.13
- DRAFT ANGLE FOR REFERENCE, UNLESS OTHERWISE SPECIFIED.
4. ESD - SURFACE RESISTIVITY
- 10⁴ TO 10¹¹ OHMS/SQ.
 5. FOR PACKAGE - BGA10X10 / QFN10x10
 6. PART NO. : NH BG1010 1.0 0823 6
(PLEASE INDICATE ON PURCHASE ORDER).

THIS DRAWING CONTAINS INFORMATION WHICH IS THE PROPRIETARY PROPERTY OF CYPRESS SEMICONDUCTOR CORPORATION. THIS DRAWING IS RECEIVED IN CONFIDENCE AND ITS CONTENTS MAY NOT BE DISCLOSED WITHOUT WRITTEN CONSENT OF CYPRESS SEMICONDUCTOR CORPORATION.

UNLESS OTHERWISE SPECIFIED ALL DIMENSIONS ARE IN MILLIMETERS STANDARD TOLERANCES ON:		DESIGNED BY	DATE	 CYPRESS Company Confidential
DECIMALS	ANGLES	DRAWN BY	DATE	
.X ±0.25	±	AQO	03/06/12	
.XX ±0.13		CHECKED BY	DATE	
.XXX ±0.13		AVC	10/17/14	
MATERIAL	SEE NOTE	APPROVED BY	DATE	TITLE
FINISH		AZY	10/17/14	TRAY, BGA 10X10 MM (PEAK - 8X23 MATRIX)
		APPROVED BY	DATE	SIZE
		AZY	10/17/14	A
				PART NO.
				TBA10X10-*
				DWG NO
				001-04282
				REV
				*C
				ENG'G REV
				SHEET 1 OF 2



THIS DRAWING CONTAINS INFORMATION WHICH IS THE PROPRIETARY PROPERTY OF CYPRESS SEMICONDUCTOR CORPORATION. THIS DRAWING IS RECEIVED IN CONFIDENCE AND ITS CONTENTS MAY NOT BE DISCLOSED WITHOUT WRITTEN CONSENT OF CYPRESS SEMICONDUCTOR CORPORATION.

 CYPRESS Company Confidential			
TITLE TRAY, BGA 10X10 MM (PEAK - 8X23 MATRIX)			
SIZE A	PART NO. TBA10X10-*	DWG NO 001-04282	REV *C
NTS	ENG'G REV	SHEET 2 of 2	