

Please note that Cypress is an Infineon Technologies Company.

The document following this cover page is marked as “Cypress” document as this is the company that originally developed the product. Please note that Infineon will continue to offer the product to new and existing customers as part of the Infineon product portfolio.

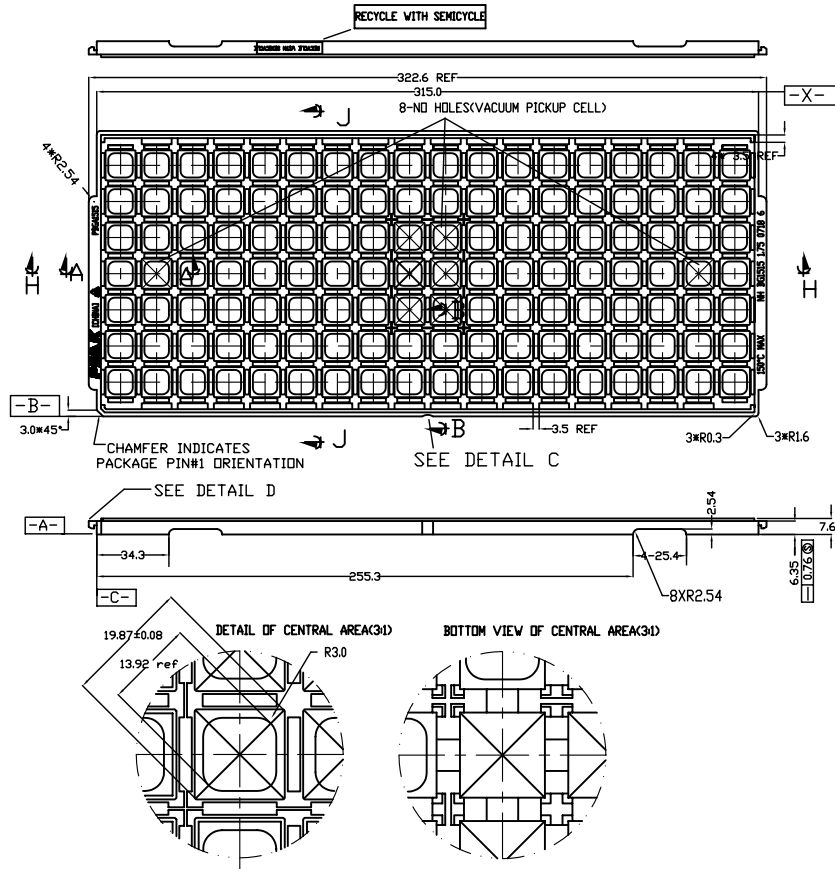
Continuity of document content

The fact that Infineon offers the following product as part of the Infineon product portfolio does not lead to any changes to this document. Future revisions will occur when appropriate, and any changes will be set out on the document history page.

Continuity of ordering part numbers


Infineon continues to support existing part numbers. Please continue to use the ordering part numbers listed in the datasheet for ordering.

REVISIONS						
PAGE	ZONE	REV	ECN	DESCRIPTION	DATE	APPROVED
		**	250129	NEW RELEASE	08/10/04	
		*A	492867	CHANGED PART NUMBER. ADDED SUPPLIER NAME ON TITLE.	08/15/06	
		*B	606596	CHANGE TITLE TO ADD 208 PKG	12/13/06	
ALL	—	*C	3793404	SUNSET REVIEW. CHANGE DRAWING TEMPLATE ALIGNMENT TO 001-49215 SPEC.	10/30/12	EDCA

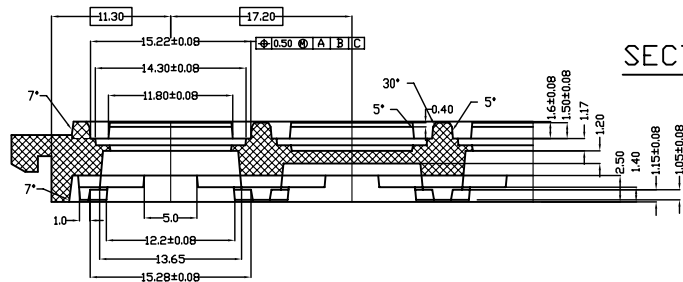


NOTES :

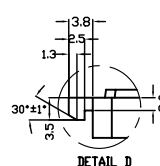
1. MATERIAL - PP6
2. ALL DIMENSIONS ARE IN MILLIMETERS.
3. TOLERANCES - X.X=±0.25
- X.XX=±0.13
- UNLESS OTHERWISE SPECIFIED.
4. ESD - SURFACE RESISTIVITY
- 10^5 TO 10^{11} OHMS/SQ.
5. FOR PACKAGE - PBGA
6. PART NO. : NH BG1515 1.75 0718 6
(PLEASE INDICATE ON PURCHASE ORDER).
7. DATECODE AT TRAY BOTTOM SIDE.

UNLESS OTHERWISE SPECIFIED ALL DIMENSIONS ARE IN MILLIMETERS STANDARD TOLERANCES ON: DECIMALS ANGLES .X ± 0.25 ± 0.5° .XX ± 0.13 .XXX ± 0.13		DESIGNED BY	DATE	 CYPRESS Company Confidential		
		DRAWN BY	DATE			
		CHECKED BY	DATE			
		APPROVED BY	DATE			
MATERIAL SEE NOTES		APPROVED BY	DATE	TITLE		
FINISH		APPROVED BY	DATE	TRAY, BGA172/196/208 15X15MM (PEAK)		
				SIZE	PART NO.	DWG NO
				D	NHBG15151.75-*	51-52080
				SCALE	N/A	
						REV *C
						SHEET 1 OF 2

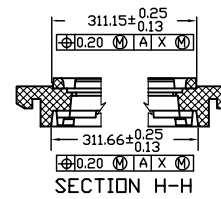
THIS DRAWING CONTAINS INFORMATION WHICH IS THE PROPRIETARY PROPERTY OF CYPRESS SEMICONDUCTOR CORPORATION. THIS DRAWING IS RECEIVED IN CONFIDENCE AND ITS CONTENTS MAY NOT BE DISCLOSED WITHOUT WRITTEN CONSENT OF CYPRESS SEMICONDUCTOR CORPORATION.



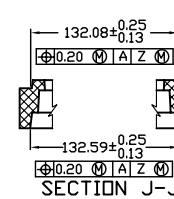
SECTION A-A



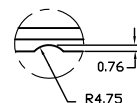
DETAIL D



SECTION H-H

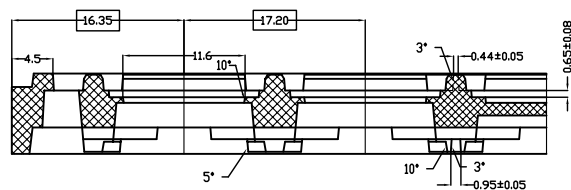


SECTION J-J



DETAIL C

NOTE: SCALLOP IS CENTERED
ON SIDE OF TRAY



SECTION B-B



CYPRESS
Company Confidential

TITLE
TRAY, BGA172/196/208 15X15MM (PEAK)

SIZE	PART NO.	DWG NO	REV
D	NHBG15151.75-*	51-52080	*C
SCALE N/A		SHEET 2 OF 2	

THIS DRAWING CONTAINS INFORMATION WHICH IS THE PROPRIETARY PROPERTY OF CYPRESS SEMICONDUCTOR CORPORATION. THIS DRAWING IS RECEIVED IN CONFIDENCE AND ITS CONTENTS MAY NOT BE DISCLOSED WITHOUT WRITTEN CONSENT OF CYPRESS SEMICONDUCTOR CORPORATION.