



Please note that Cypress is an Infineon Technologies Company.

The document following this cover page is marked as “Cypress” document as this is the company that originally developed the product. Please note that Infineon will continue to offer the product to new and existing customers as part of the Infineon product portfolio.

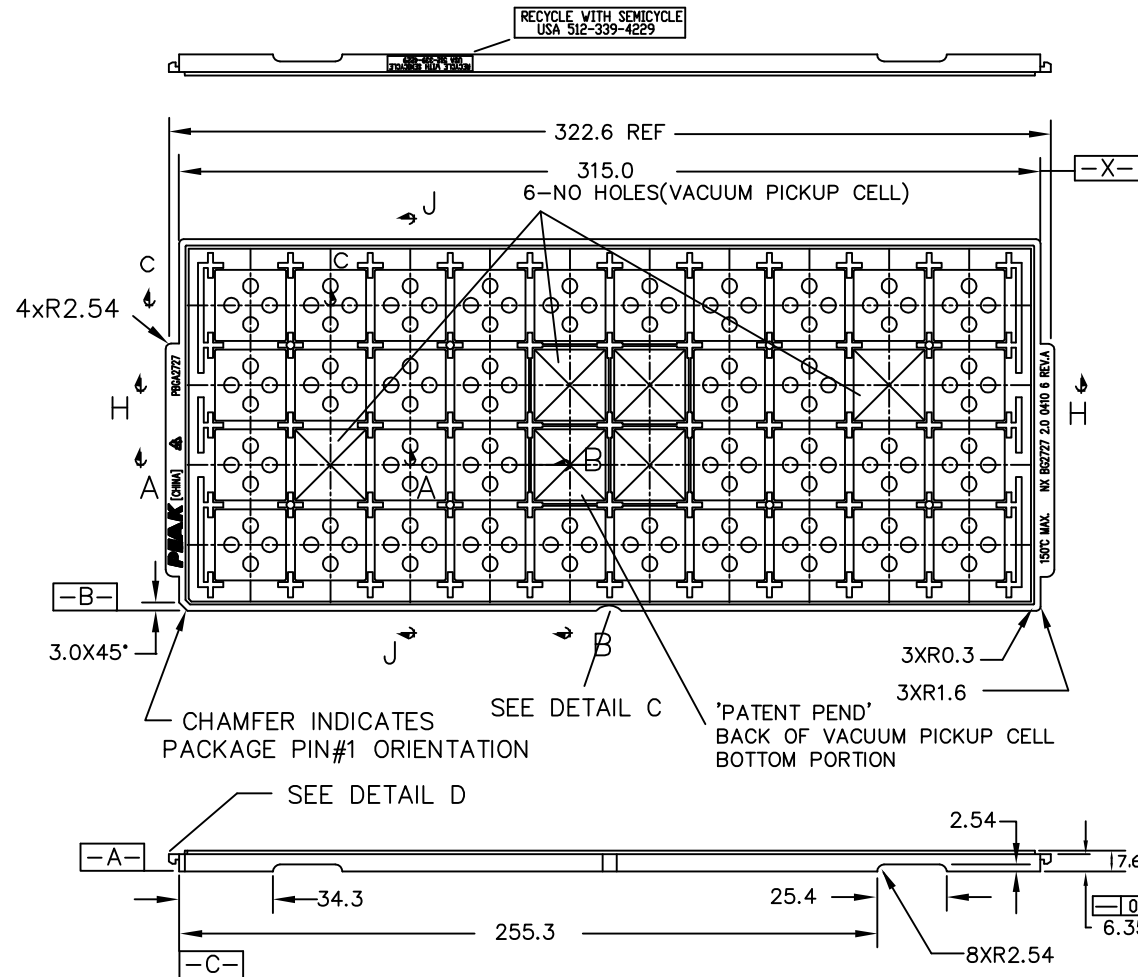
Continuity of document content

The fact that Infineon offers the following product as part of the Infineon product portfolio does not lead to any changes to this document. Future revisions will occur when appropriate, and any changes will be set out on the document history page.

Continuity of ordering part numbers


Infineon continues to support existing part numbers. Please continue to use the ordering part numbers listed in the datasheet for ordering.

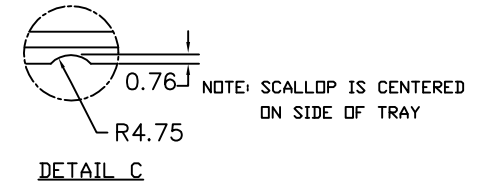
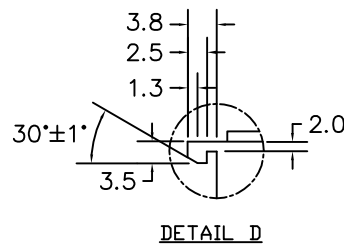
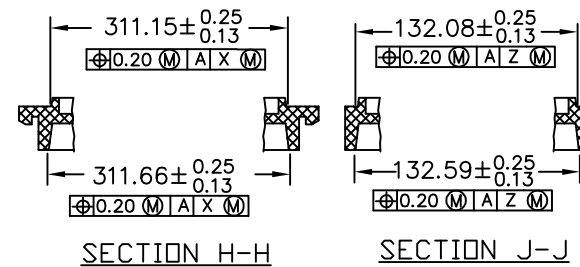
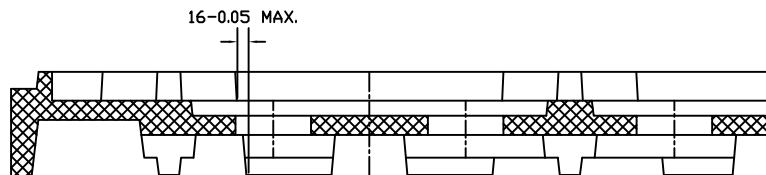
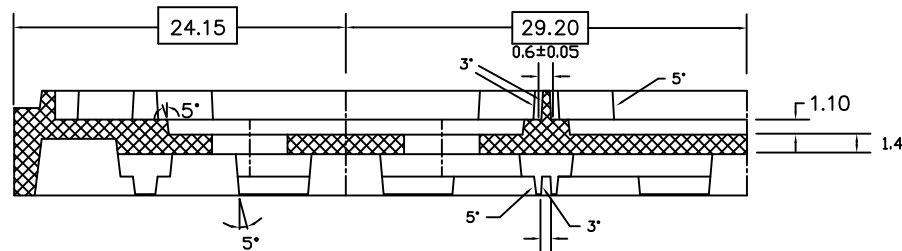
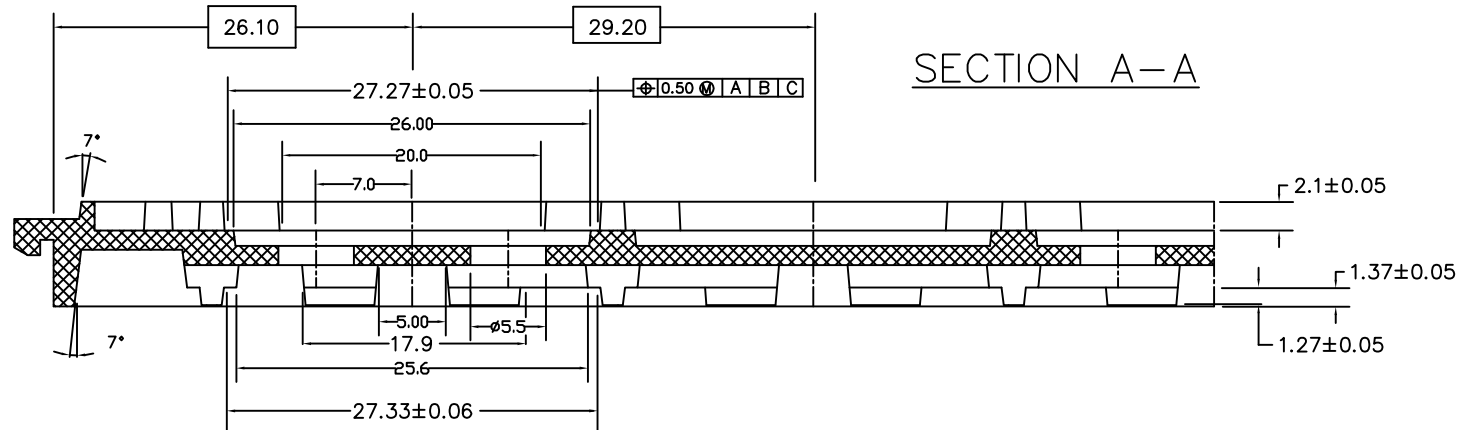
| REVISIONS | | | | | | |
|-----------|------|-----|---------|--|----------|----------|
| PAGE | ZONE | REV | ECN | DESCRIPTION | DATE | APPROVED |
| 1 | - | ** | 103608 | NEW RELEASE | 10/27/00 | |
| 1 | - | *A | 127145 | Change title from 256 L2BGA tray 27x27x1.52MM to Tray, 256 L2BGA (27x27x1.52mm), change P/N from TBG256L2 to TBG256L2-*, added Note 7 for black and red tray P/N | 05/20/03 | |
| ALL | - | *B | 3296168 | CHANGE DRAWING TEMPLATE | 06/29/11 | QAD/KGL |
| ALL | - | *C | 4431977 | SUNSET REVIEW. NO CHANGE. | 07/07/14 | QAD |




- NOTES:
1. MATERIAL - PP6.
 2. ALL DIMENSIONS ARE IN MILLIMETERS.
 3. TOLERANCES - X.X = ± 0.25
- X.XX = ± 0.13
 - UNLESS OTHERWISE SPECIFIED.
 4. ESD - SURFACE RESISTIVITY - 10^6 TO 10^{10} OHMS/SQ.
 5. FOR PACKAGE - PBGA
 6. PART NO. : NX BG2727 2.0 0410 6 REV.A
 7. P/N FOR BLACK TRAY : TBG256L2-B
P/N FOR RED TRAY : TBG256L2-R

THIS DRAWING CONTAINS INFORMATION WHICH IS THE PROPRIETARY PROPERTY OF CYPRESS SEMICONDUCTOR CORPORATION. THIS DRAWING IS RECEIVED IN CONFIDENCE AND ITS CONTENTS MAY NOT BE DISCLOSED WITHOUT WRITTEN CONSENT OF CYPRESS SEMICONDUCTOR CORPORATION.

| | | | | | |
|--|--|-------------|----------|---|--|
| UNLESS OTHERWISE SPECIFIED ALL DIMENSIONS ARE IN MILLIMETERS STANDARD TOLERANCES ON: | | DESIGNED BY | DATE | <div> CYPRESS Company Confidential</div> | |
| DECIMALS | | DRAWN BY | DATE | | |
| .X ± 0.25 | | ADQ | 06/29/11 | TITLE TRAY,256 L2BGA (27x27x1.52MM) | |
| .XX ± 0.13 | | CHECKED BY | DATE | | |
| .XXX ± | | UDD | 07/07/14 | SIZE A | |
| | | APPROVED BY | DATE | | |
| | | QAD | 07/07/14 | PART NO. TBG256L2-* | |
| | | | | | |
| MATERIAL | | APPROVED BY | DATE | DWG NO | |
| SEE NOTES | | UYO | 07/07/14 | 51-52082 | |
| FINISH | | APPROVED BY | DATE | REV | |
| SEE NOTES | | | | *C | |
| | | | | SCALED TO FIT | |
| | | | | ENG'G REV | |
| | | | | SHEET 1 OF 2 | |



THIS DRAWING CONTAINS INFORMATION WHICH IS THE PROPRIETARY PROPERTY OF CYPRESS SEMICONDUCTOR CORPORATION. THIS DRAWING IS RECEIVED IN CONFIDENCE AND ITS CONTENTS MAY NOT BE DISCLOSED WITHOUT WRITTEN CONSENT OF CYPRESS SEMICONDUCTOR CORPORATION.

| | | | |
|--|-------------------------------|---------------------------|---------------------|
|  CYPRESS Company Confidential | | | |
| TITLE TRAY,256 L2BGA (27x27x1.52MM) | | | |
| SIZE A | PART NO. TBG256L2-* | DWG NO 51-52082 | REV *C |
| SCALED TO FIT | | ENG'G REV | SHEET 2 OF 2 |