

**Please note that Cypress is an Infineon Technologies Company.**

The document following this cover page is marked as “Cypress” document as this is the company that originally developed the product. Please note that Infineon will continue to offer the product to new and existing customers as part of the Infineon product portfolio.

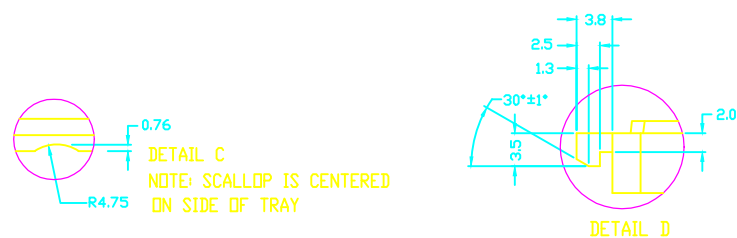
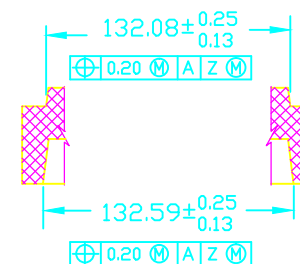
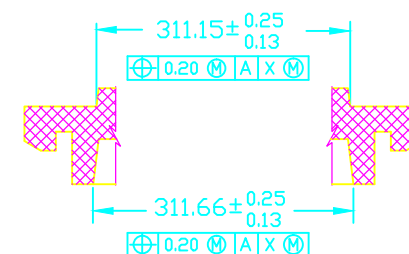
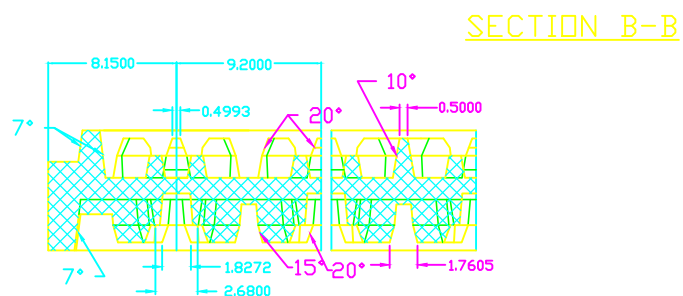
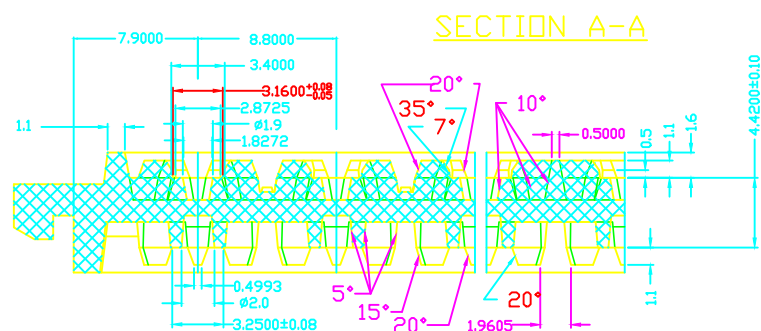
**Continuity of document content**


The fact that Infineon offers the following product as part of the Infineon product portfolio does not lead to any changes to this document. Future revisions will occur when appropriate, and any changes will be set out on the document history page.

**Continuity of ordering part numbers**

Infineon continues to support existing part numbers. Please continue to use the ordering part numbers listed in the datasheet for ordering.





UNLESS OTHERWISE SPECIFIED		DESIGNED BY		DATE		 <div>CYPRESS Company Confidential</div>	
ALL DIMENSIONS ARE IN MILLIMETERS STANDARD TOLERANCES ON:  DECIMALS X.X ± 0.25 X.XX ± 0.13 X.XXX ±		NA		DATE			
		DRAWN BY		DATE			
		XVC		09/12/12			
ANGLES  X.XX ± 0.13 X.XXX ±		CHECKED BY		DATE		TITLE  TRAY, 16L QFN 3X3X0.6MM (PEAK)	
		ZJL		09/12/12			
		APPROVED BY		DATE			
QAD		09/12/12		SIZE		REV	
MATERIAL		APPROVED BY		DATE		PART NO.	
N/A		KGL		09/12/12		DWG NO	
FINISH		APPROVED BY		DATE		001-55305	
N/A						*B	
						SCALED TO FIT N/A SHEET 2 OF 2	

THIS DRAWING CONTAINS INFORMATION WHICH IS THE PROPRIETARY PROPERTY OF CYPRESS SEMICONDUCTOR CORPORATION. THIS DRAWING IS RECEIVED IN CONFIDENCE AND ITS CONTENTS MAY NOT BE DISCLOSED WITHOUT WRITTEN CONSENT OF CYPRESS SEMICONDUCTOR CORPORATION.