

Please note that Cypress is an Infineon Technologies Company.

The document following this cover page is marked as “Cypress” document as this is the company that originally developed the product. Please note that Infineon will continue to offer the product to new and existing customers as part of the Infineon product portfolio.

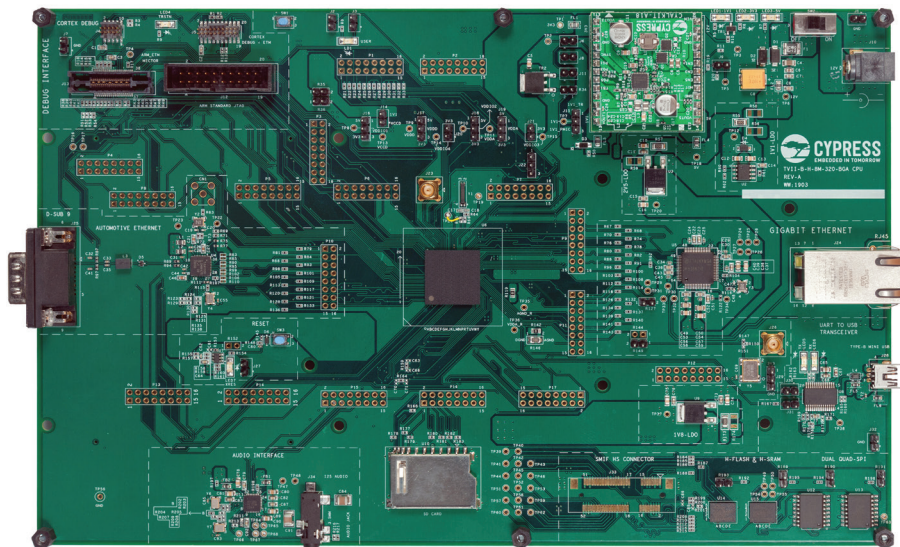
Continuity of document content

The fact that Infineon offers the following product as part of the Infineon product portfolio does not lead to any changes to this document. Future revisions will occur when appropriate, and any changes will be set out on the document history page.

Continuity of ordering part numbers

Infineon continues to support existing part numbers. Please continue to use the ordering part numbers listed in the datasheet for ordering.

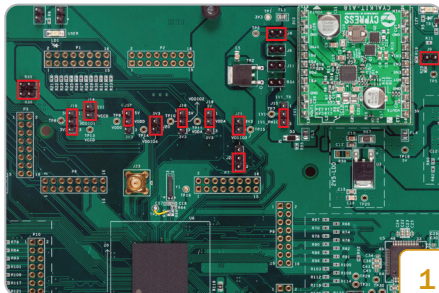
TRAVEO II CPU BOARD



Kit Contents:

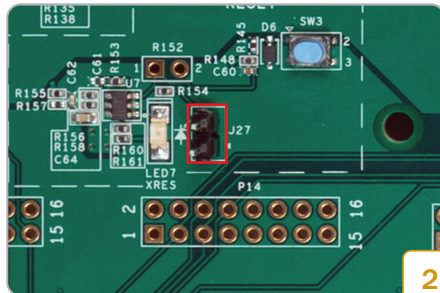
1. Traveo II CPU Board CYT7II-B-H-8M-320-BGA CPU BOARD Rev.A
2. Type-B Mini USB Cable
3. 12V AC-DC Universal Power Adapter
4. Quick Start Guide (this document)
5. Screws and Spacers

TRAVEO II CPU BOARD



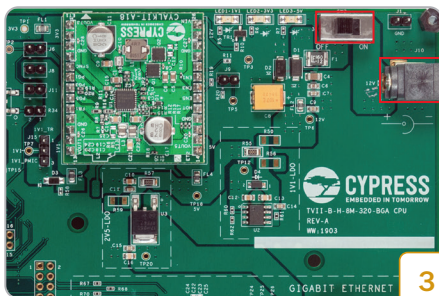
1

- Ensure that Jumpers J14, J20, J21, J6, J9, R35 are inserted. Jumpers J16, J17, J18, J19 should be in position 1-2. Jumpers J22, J15 should be in position 2-3



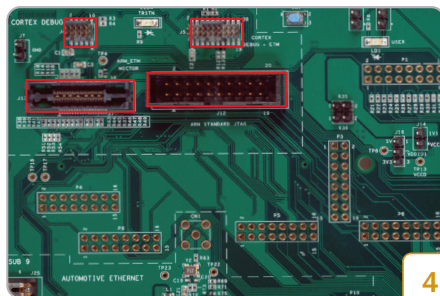
2

- Ensure that the Reset Jumper (J27) is inserted



3

- Connect the 12V Adapter to J10 connector. Toggle the switch SW2 to ON position to power ON the board



4

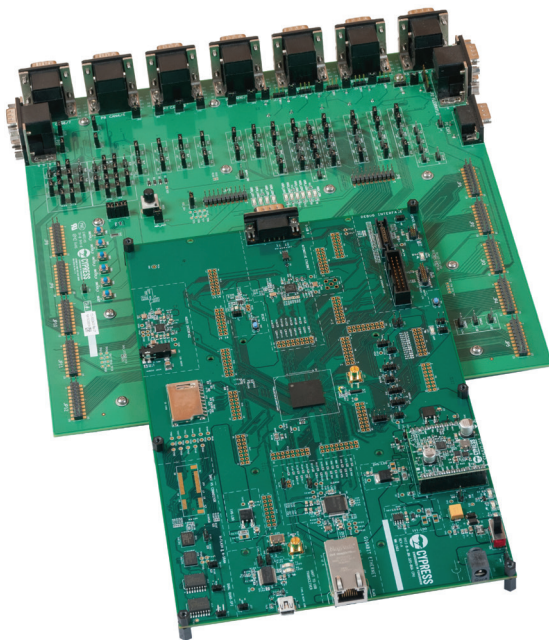
- Connect an appropriate programming tool (IAR/GHS), to one of the debugging interfaces -(J4, J5, J12, J13)

Use an appropriate IDE on a PC, to load a firmware SREC file into the device flash successfully.
The LED Blink Firmware is available in the Release-Package

TRAVEO II CPU BOARD

Instructions:

- The Traveo II CPU Board can be used standalone to evaluate limited features of the Traveo II MCU
- The board can be used with Body Controller Base Board, to evaluate all the features of the MCU



- To know more about the Base Board and compatibility, please use the Cypress Customer Support Portal. ([cypress.com/support](https://www.cypress.com/support))

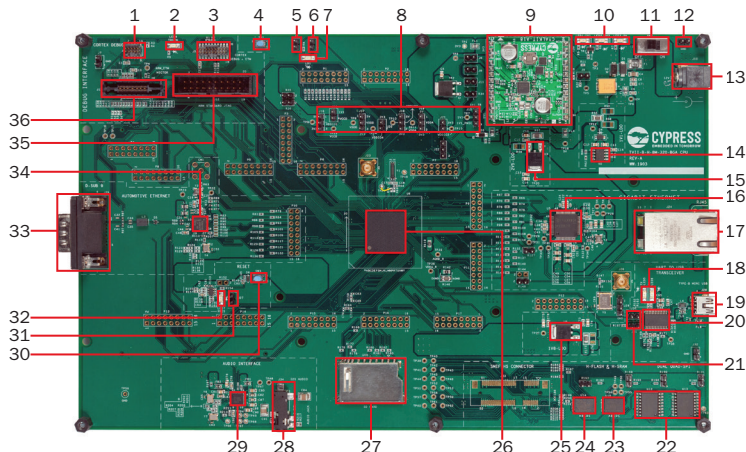
For the following documentation:

- User Guide
- Schematic
- Sample Driver Library (SDL)
- Software examples

Please use the Cypress Customer Support Portal.

TRAVEO II CPU BOARD

Traveo II CPU Board Details



- | | |
|---|--|
| 1. MIPI-10-Cortex Debug Connector | 19. USB Type-B Mini Connector |
| 2. MCU TAP Controller Reset LED | 20. Cypress USB-Serial Controller |
| 3. MIPI-20-Cortex Debug + ETM Connector | 21. Rx and Tx Jumpers |
| 4. SW1 – User Switch | 22. Quad SPI 256M Flash Memory |
| 5. J2 – Jumper for User Switch | 23. 512M Hyper Flash Memory |
| 6. J3 – Jumper for User LED | 24. 64M Hyper DRAM |
| 7. LD1 – User LED | 25. 1.8V LDO |
| 8. MCU Power Jumpers | 26. U6 – Cypress TVII-B-H-8M MCU |
| 9. Cypress PMIC | 27. SD Card Connector |
| 10. Power LEDs | 28. J34 – Audio Jack |
| 11. SW2 – Power Switch | 29. Audio Codec |
| 12. J1 – Jumper for GND Probe | 30. SW3 – MCU Reset |
| 13. J10 - Power Jack (12 V) | 31. J27 - MCU Reset Jumper |
| 14. 1.1V LDO | 32. LED7 – MCU Reset LED |
| 15. 2.5V LDO | 33. D-SUB 9 Automotive Ethernet Connector |
| 16. Gigabit Ethernet Controller | 34. Automotive Ethernet Controller |
| 17. RJ45 Gigabit Ethernet Connector | 35. 20 Pin IDC – Arm Standard JTAG Connector |
| 18. UART Rx and Tx LEDs | 36. Mictor-38- Arm ETM Mictor Connector |