



**Please note that Cypress is an Infineon Technologies Company.**

The document following this cover page is marked as “Cypress” document as this is the company that originally developed the product. Please note that Infineon will continue to offer the product to new and existing customers as part of the Infineon product portfolio.

**Continuity of document content**

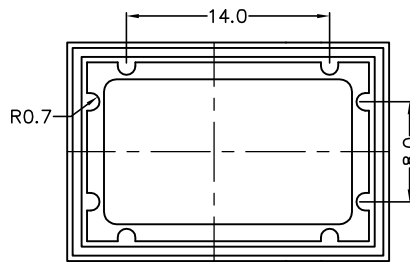
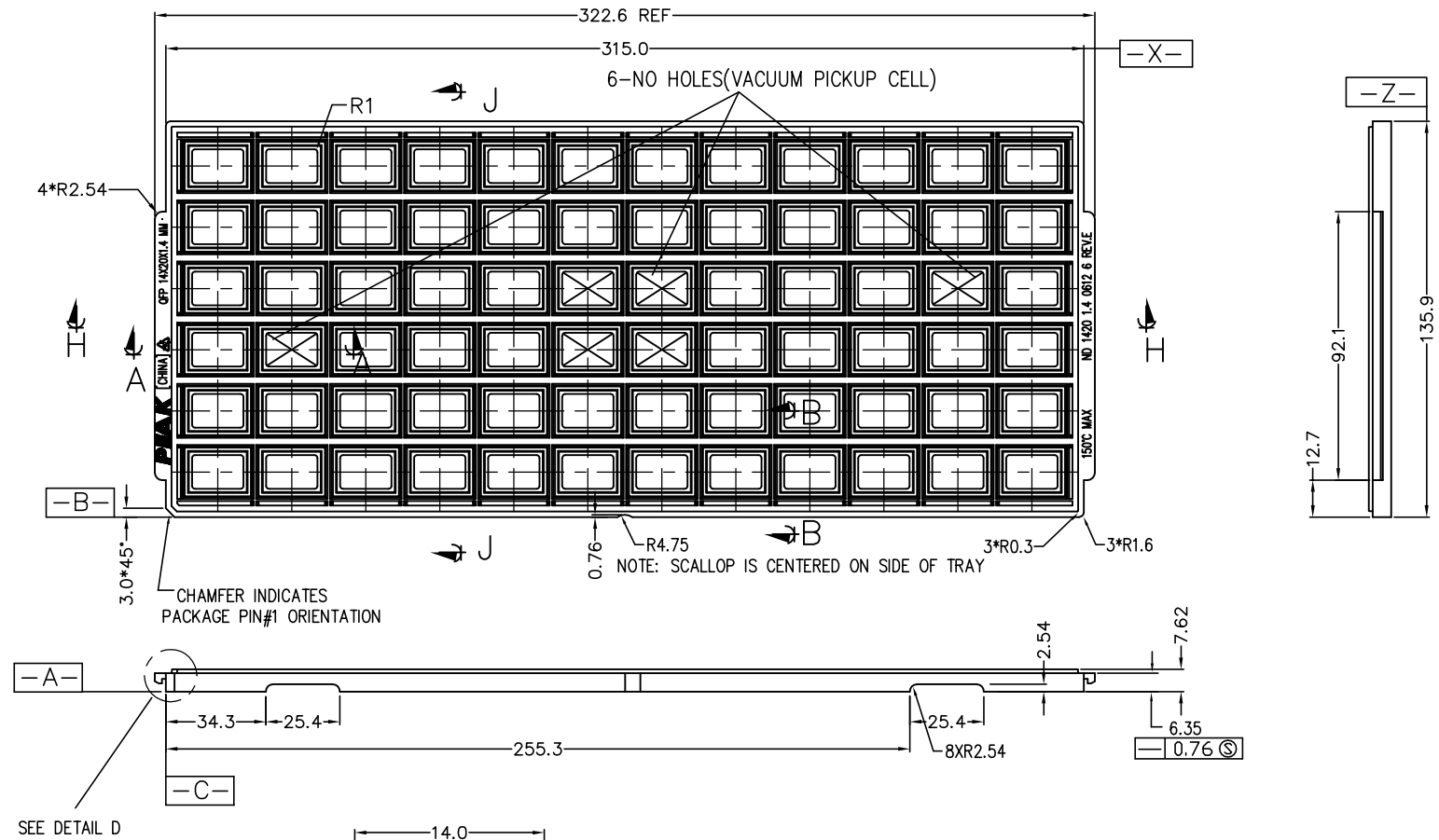
The fact that Infineon offers the following product as part of the Infineon product portfolio does not lead to any changes to this document. Future revisions will occur when appropriate, and any changes will be set out on the document history page.

**Continuity of ordering part numbers**

Infineon continues to support existing part numbers. Please continue to use the ordering part numbers listed in the datasheet for ordering.

REVISIONS

PAGE	ZONE	REV	ECN	DESCRIPTION	DATE	APPROVED
1	-	**	1606	NEW RELEASE	05/23/96	
1	-	*A	121512	INCLUDE PART # OF BLACK, BLUE AND RED TRAYS	11/13/02	
ALL	-	*B	3089313	CHANGE DRAWING TEMPLATE TRAY DRAWING REVISION UPDATE DRAWING BASED ON SUPPLIER'S CURRENT	11/18/10	QAD/KGL
ALL	-	*C	3770676	TRANSFER DRAWING TO CML TEMPLATE	10/09/12	QAD/KGL

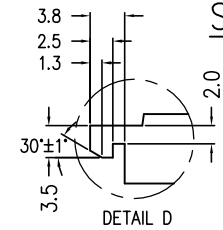
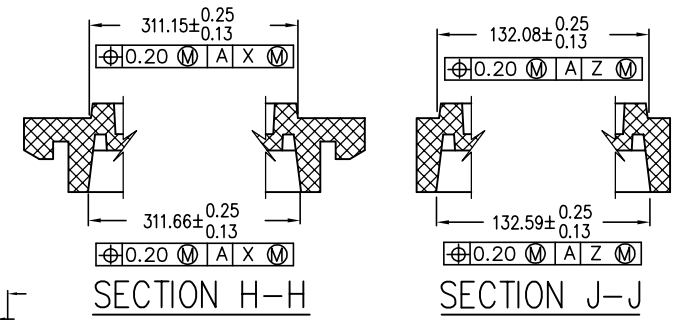
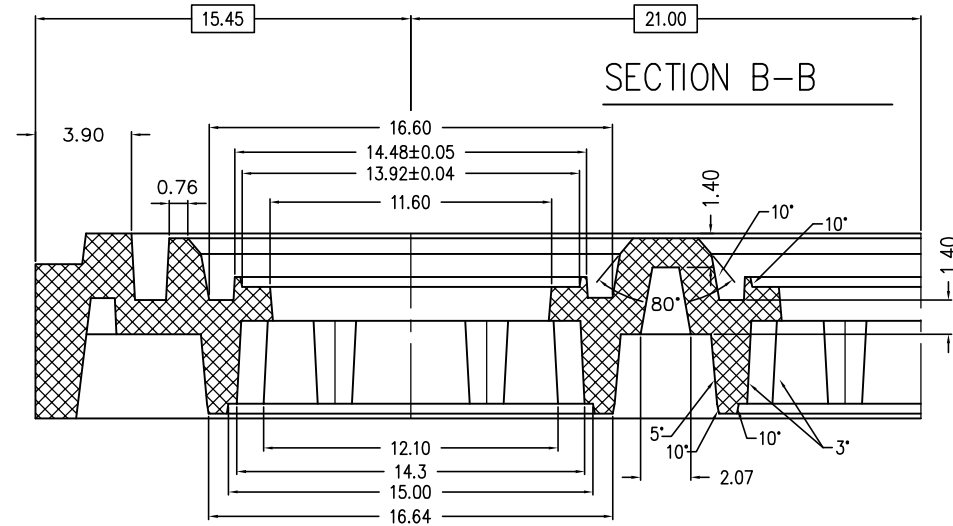
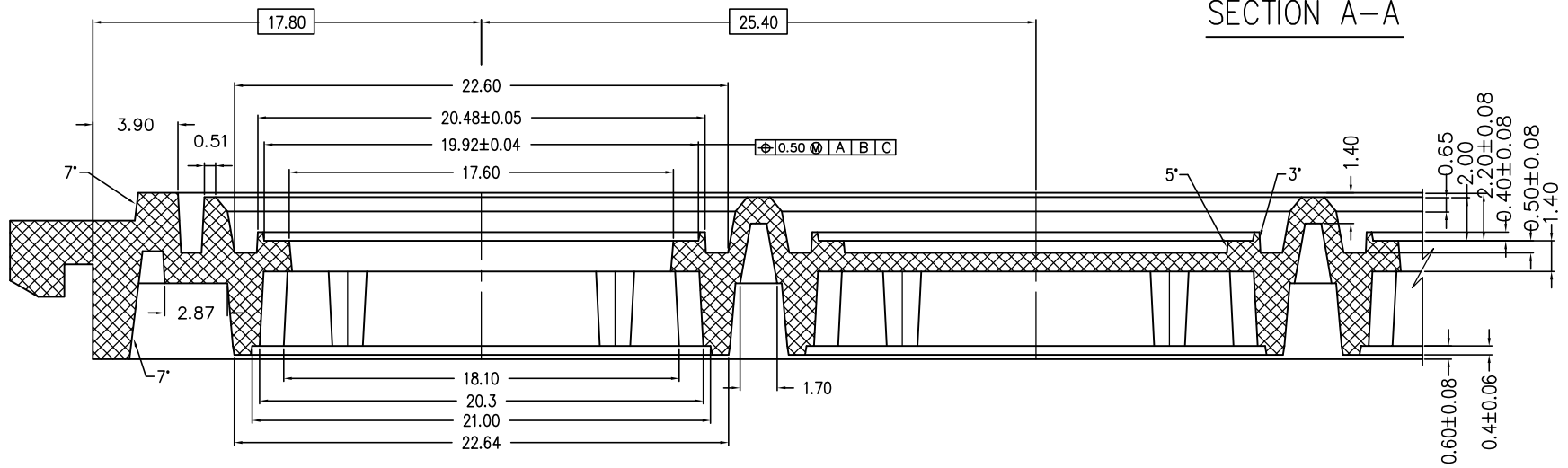


BACK VIEW OF CELL (4:1)

NOTES:

1. MATERIALS - PP6
2. ALL DIMENSIONS ARE IN MILLIMETERS.
3. TOLERANCES - X.X = ±0.25  
- X.XX = ±0.13
4. ESD - SURFACE RESISTIVITY  
- 10 TO 10 OHMS/SQ.
5. FOR PACKAGE - 1.4 MM THICKNESS.
6. PART NO. : ND 1420 1.4 0612 6 REV.E
7. DATE CODE AT TRAY BOTTOM
8. THERE ARE 72 UNITS PER TRAY
9. CML TRAY PART # :  
BLACK TRAY - TA1420-14-B  
BLUE TRAY - TA1420-14-BL  
RED TRAY - TA1420-14-R

UNLESS OTHERWISE SPECIFIED		DESIGNED BY	DATE	 CYPRESS COMPANY CONFIDENTIAL
ALL DIMENSIONS ARE IN MILLIMETERS STANDARD TOLERANCES ON:		DRAWN	DATE	
DECIMALS	ANGLES	XVC	10/08/12	
.XX ± 0.25		CHK BY	DATE	
.XXX ± 0.13		ZJL	10/08/12	
.XXXX		APPROVED BY	DATE	
		QAD	10/08/12	
MATERIAL		APPROVED BY	DATE	
SEE NOTE # 1		KGL	10/08/12	
FINISH				
TITLE				TQFP TRAY 14 X 20 X 1.4mm
SIZE	PART NO.	DWG NO	REV	
	TA142014	51-52016	xC	
FIT TO SCALE				SHEET 1 OF 2



UNLESS OTHERWISE SPECIFIED ALL DIMENSIONS ARE IN MILLIMETERS STANDARD TOLERANCES ON:		DESIGNED BY	DATE		
DECIMALS	ANGLES	DRAWN	DATE		
XX ± 0.25		XVC	10/08/12	TITLE TQFP TRAY 14 X 20 X 1.4mm	
XXX ± 0.13		CHK BY	DATE		
XXXX		ZJL	10/08/12	SIZE	PART NO.
MATERIAL		APPROVED BY	DATE	TA142014	DWG NO.
SEE NOTE # 1		QAD	10/08/12	51-52016	REV
FINISH		APPROVED BY	DATE		XC
		KGL	10/08/12	FIT TO SCALE	
				SHEET 1 OF 2	

THIS DRAWING CONTAINS INFORMATION WHICH IS THE PROPRIETARY PROPERTY OF CYPRESS SEMICONDUCTOR CORPORATION. THIS DRAWING IS RECEIVED IN CONFIDENCE AND ITS CONTENTS MAY NOT BE DISCLOSED WITHOUT WRITTEN CONSENT OF CYPRESS SEMICONDUCTOR CORPORATION.