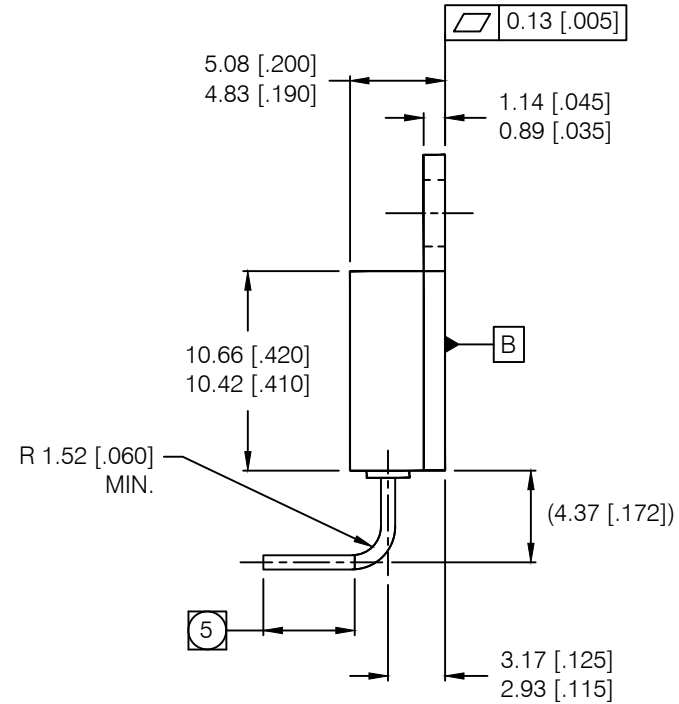
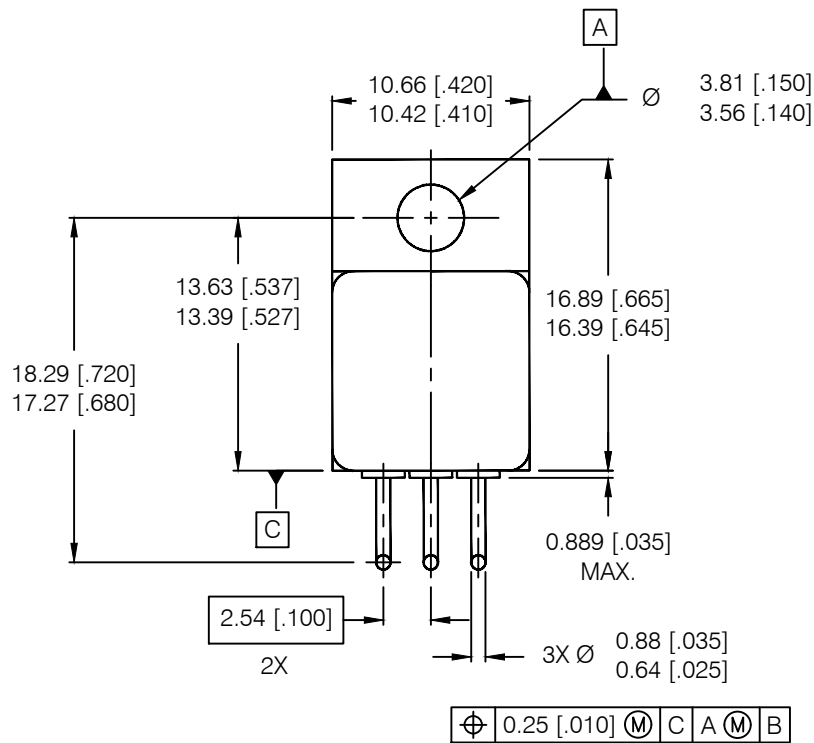


REV.	DESCRIPTION	ECN	DATE
A	INITIAL RELEASE	1120_ER6904	4-3-20



NOTES:

1. DIMENSIONING & TOLERANCING PER ASME Y14.5M-1994.
2. ALL DIMENSIONS ARE SHOWN IN MILLIMETERS [INCHES].
3. CONTROLLING DIMENSION: INCH.
4. THIS OUTLINE IS A MODIFIED TO-257AA JEDEC OUTLINE.
- 5 LEADS TO BE TRIMMED TO 10.795 [.425] \pm 0.635 [.025] BEFORE LEADFORMING.
6. STANDARD FINAL FINISH ON ALL TERMINALS IS SOLDER ALLOY 63%Sn 37%Pb.

IOR HiRel
An Infineon Technologies Company

TITLE: TO-257AA LEADFORM-UP
W/LEAD TRIM PACKAGE OUTLINE

DRAWING NO. D100881G-WEB REV A