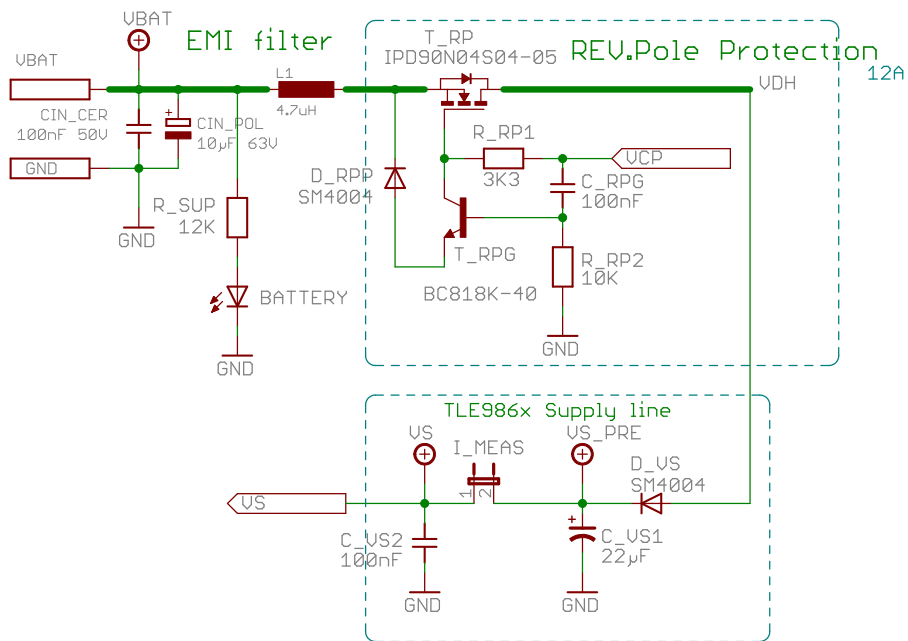
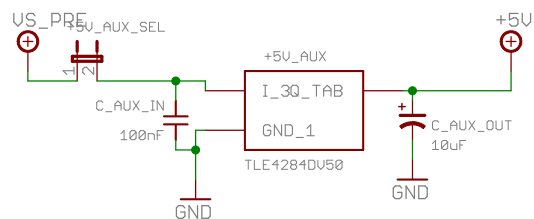


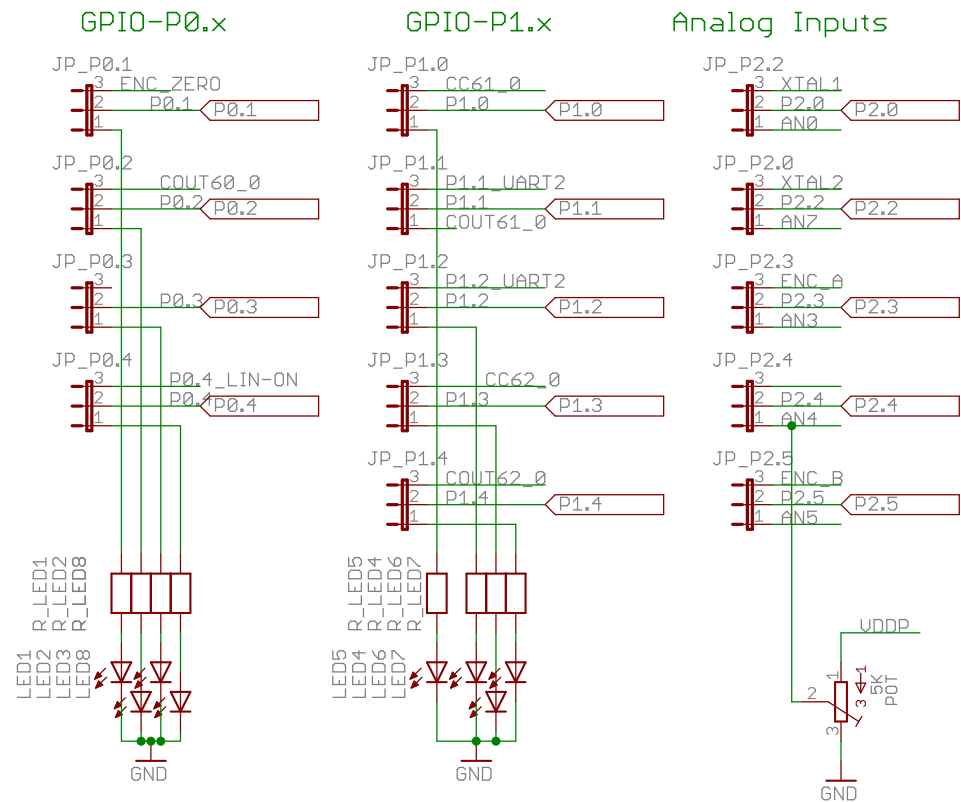
Power Supply and input filter



AUX supply

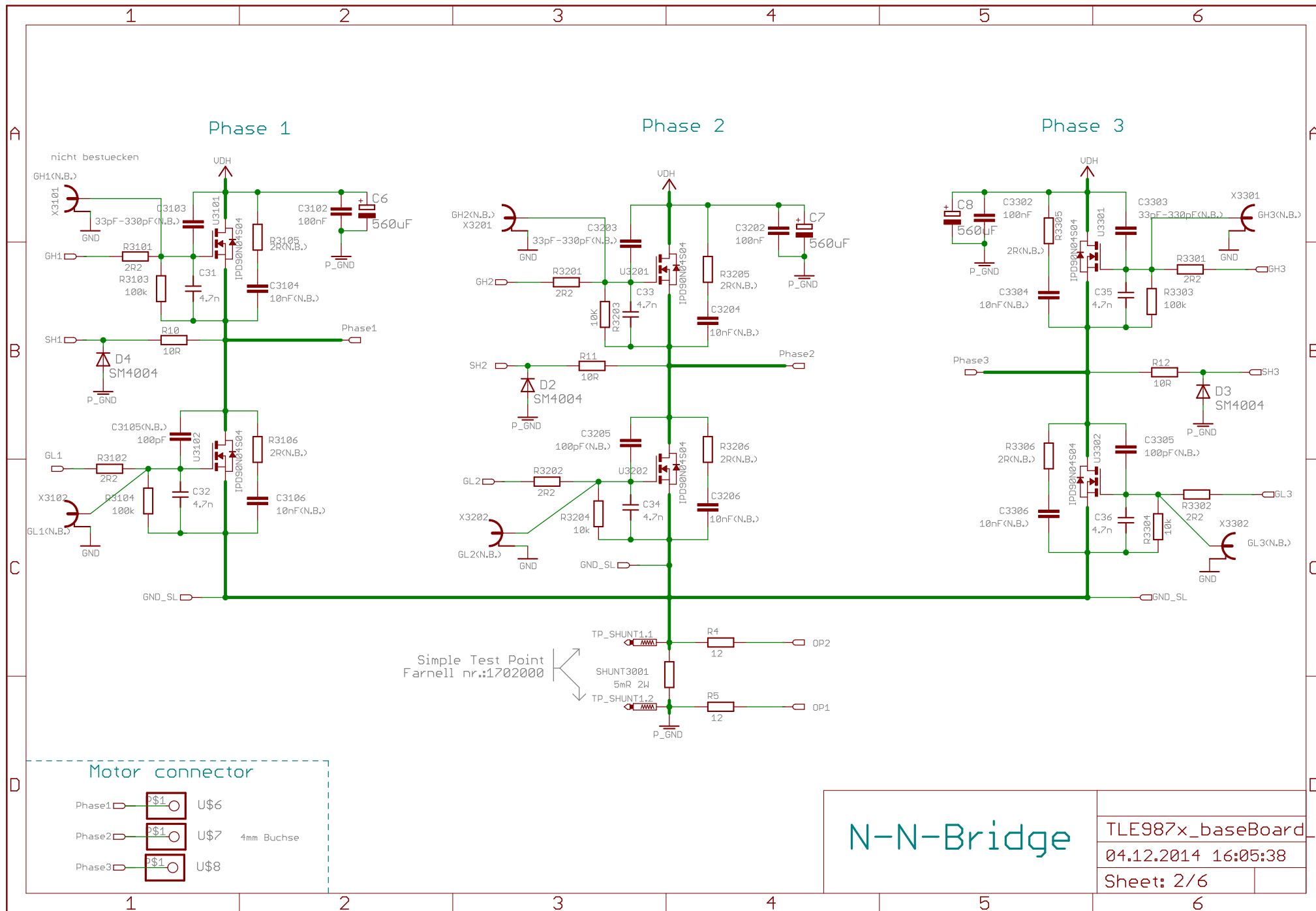


GPIO configurations

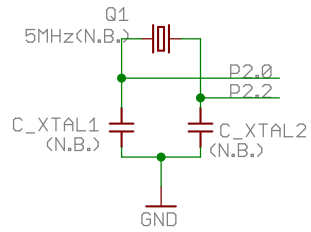


Supply
GPIO configurations

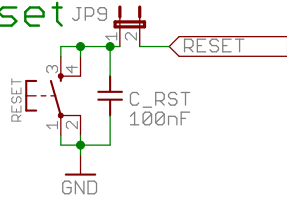
TLE987x_baseBoard_rev1.2
04.12.2014 16:05:38
Sheet: 1/6



External Oscillator

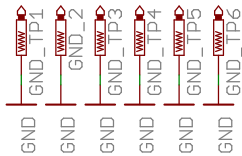


Reset

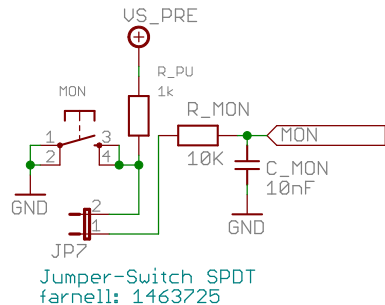


Test Points

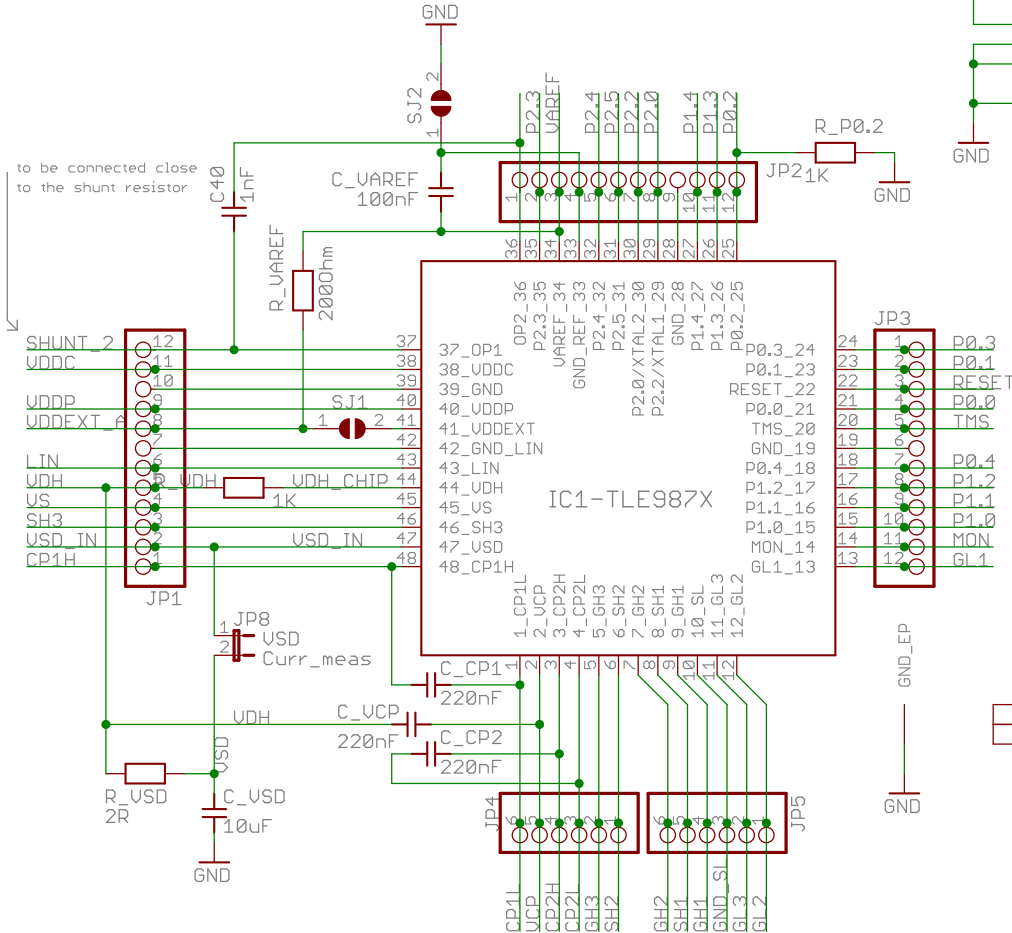
Simple Test Point
Farnell nr.:1702000



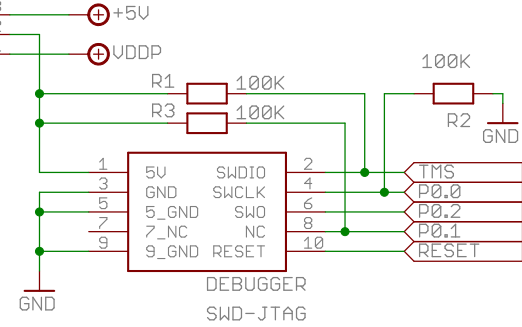
Monitor Pin



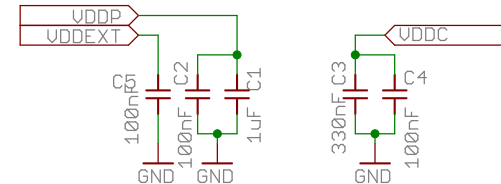
TLE987x IC



Debug Interface (SWD)



VR's Blocking Cap.



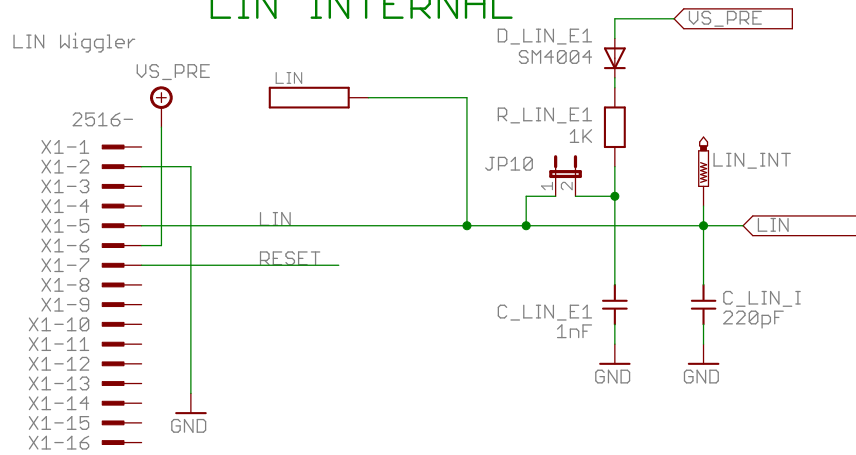
IC's and digital part

TLE987x_baseBoard_rev1.2

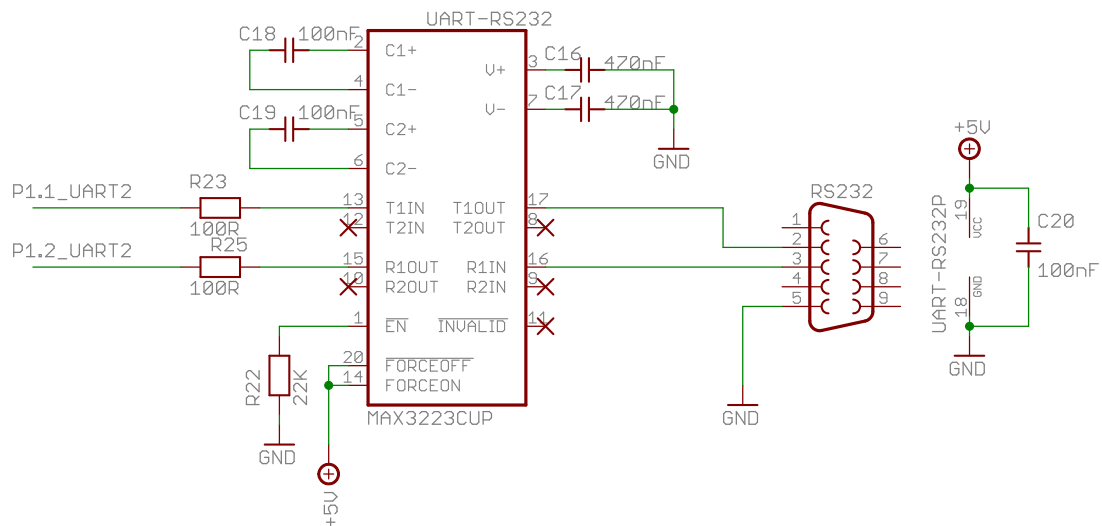
04.12.2014 16:05:38

Sheet: 3/6

LIN INTERNAL



UART2



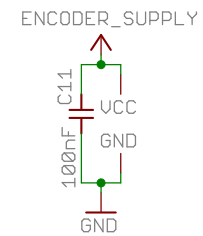
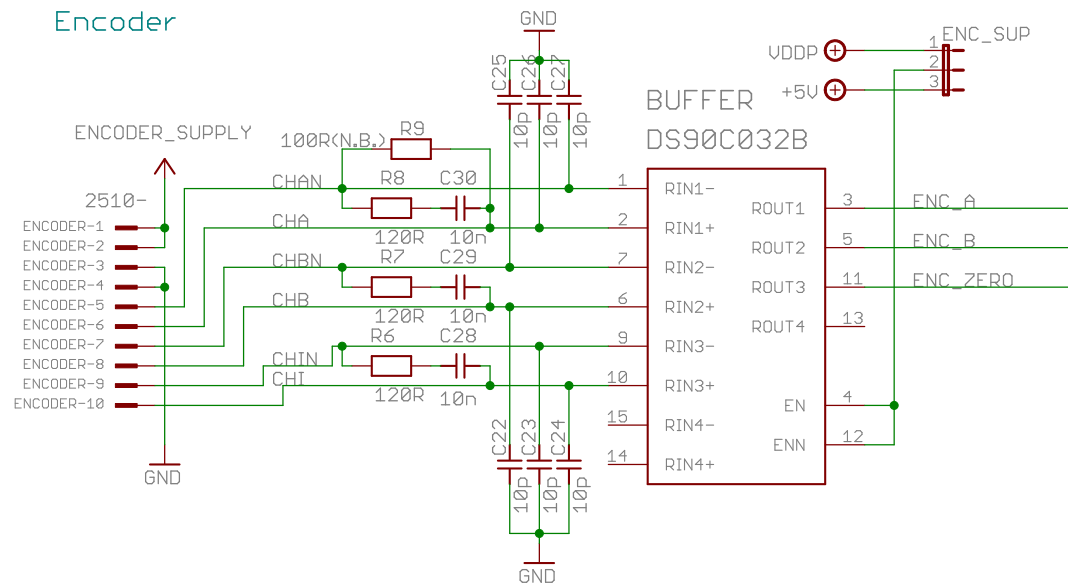
UART 1: P0.1 TxD_1, P1.4 RxD_1
 UART 2: P1.1 TxD_2, P1.2 RxD_2

TLE987x_baseBoard_rev1.2

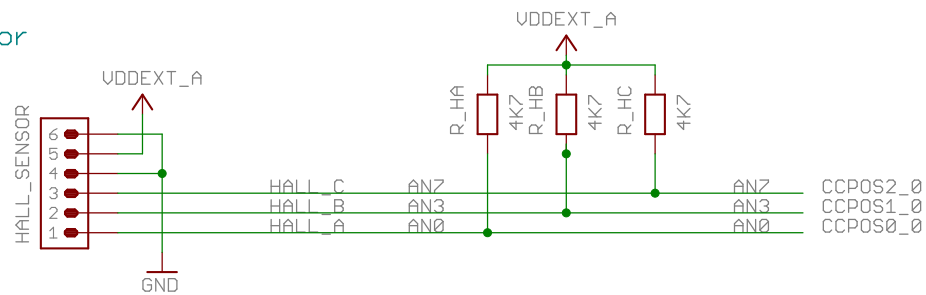
04.12.2014 16:05:38

Sheet: 4/6

Encoder



Hall Sensor



Sensors

TLE987x_baseBoard_rev1.2

04.12.2014 16:05:38

Sheet: 5/6

	1	2	3	4	5	6
	Revision	Date	Changes			
A	0.1	28/08/2012	Review the Power stage components Jumper to disconnect the AUX 5V LS gate phase 1 junction Changed the VDH label on chip side Insert input filter on VSD Removed C8 from VAREF GND_SL connected to SHUNT_1 on the power stage R_VAREF changed to 2000hm MAX 3223 supplied from VDDP or 5V AMR sensor resistors have been changed to 1Kohm All sensors are supplied from VDDEXT_A SWD 10 pin connector can manage JTAG as well Diff-Buffer supplied from VDDP or 5V Combine in one connector Encoder and Hall sensor			
B						
C	0.2	21/06/2013	Removed External LIN Changed UART_config1 and UART_config 2 4mm Banana connector for LIN Supply for LIN master is VS HS gate driver test point: reference changed to SHx GND test point changed to normal PIN-Strip (no gold contact needed) Removed AMR Sensor connector Removed Temperature sensor circuit New 5MHz Crystal Split Hall and Encoder connector Add pull-up resistor on Hall sensor channel to +5V New LIN Connector for LIN-Wiggler			
D						
Review History					TLE987x_baseBoard_rev1.2	
					04.12.2014 16:05:38	
					Sheet: 6/6	
	1	2	3	4	5	6