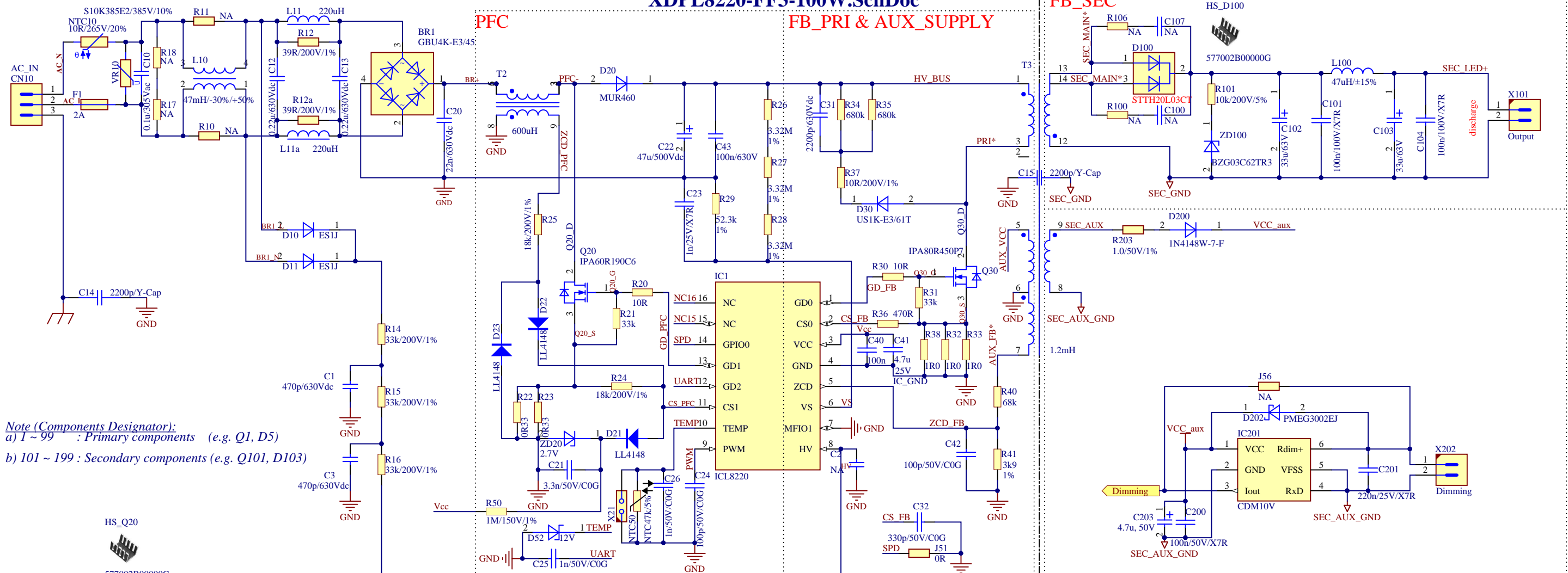


# XDPL8220-FF3-100W.SchDoc

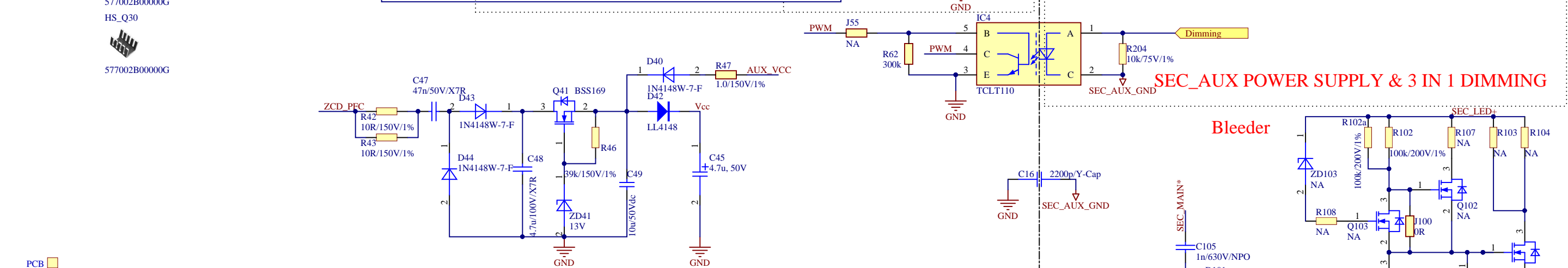
## FB\_PRI & AUX\_SUPPLY

## FB\_SEC



**Note (Components Designator):**  
a) 1 ~ 99 : Primary components (e.g. Q1, D5)  
b) 101 ~ 199 : Secondary components (e.g. Q101, D103)

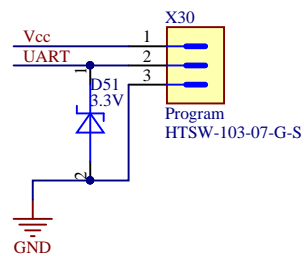
## SEC\_AUX POWER SUPPLY & 3 IN 1 DIMMING



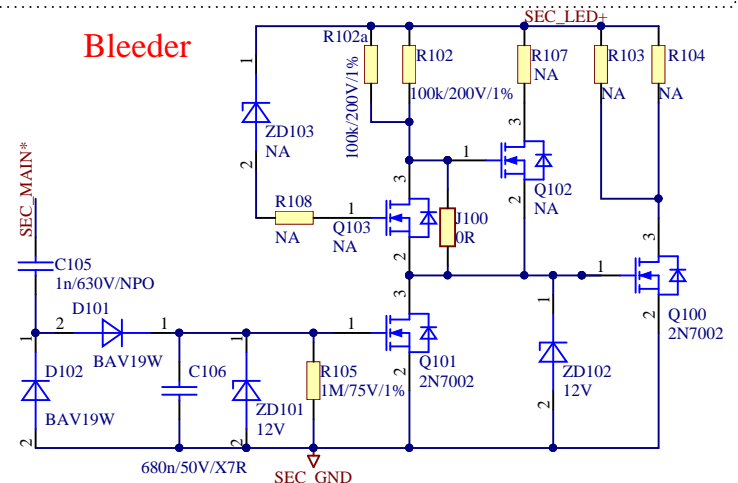
## TEST POINTS

PFC_GD	GD_PFC	FB_GD	GD_FB	V <sub>cc</sub>	V <sub>cc</sub>	AC_L	AC_L	SEC_MAIN*	SEC_MAIN*
PFC_CS	CS_PFC	FB_ZCD	ZCD_FB	IC_GND	GND	AC_N	AC_N	SEC_GND	SEC_GND
PFC_ZCD	ZCD_PFC	FB_Drain	PRI*	GND	GND			SEC_LED+	SEC_LED+
PFC_Drain	PFC-	FB_AUX	AUX_FB*	UART	UART			SEC_AUX	SEC_AUX
HV_BUS	HV_BUS	FB_CS	CS_FB	DIMMING	PWM	SPD	SPD	SEC_AUX_GND	SEC_AUX_GND
				TEMP	TEMP				

## PROGRAM



## Bleeder



<b>Infiniteon Technologies AG</b> PMM ACDC AE LI Am Campeon 1-12 - 85579 Neubiberg - Germany			
Title	XDPL8220 FF3 100W		
Variant	[No Variations]		
Size:	Document Name	Rel.	Rev.
A3	XDPL8220-FF3-100W.SchDoc	TJ	V2.6
Author: TJ Date: 22.02.2018 Time: 13:05:44 SVN Revision: Unknown revision © Infiniteon Technologies AG 2014. All Rights Reserved.			
		Sheet	of 1

