

**Please note that Cypress is an Infineon Technologies Company.**

The document following this cover page is marked as “Cypress” document as this is the company that originally developed the product. Please note that Infineon will continue to offer the product to new and existing customers as part of the Infineon product portfolio.

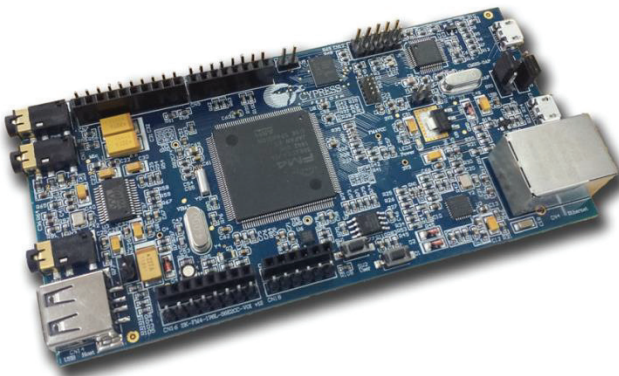
**Continuity of document content**

The fact that Infineon offers the following product as part of the Infineon product portfolio does not lead to any changes to this document. Future revisions will occur when appropriate, and any changes will be set out on the document history page.

**Continuity of ordering part numbers**

Infineon continues to support existing part numbers. Please continue to use the ordering part numbers listed in the datasheet for ordering.

# FM4 S6E2CC PIONEER KIT

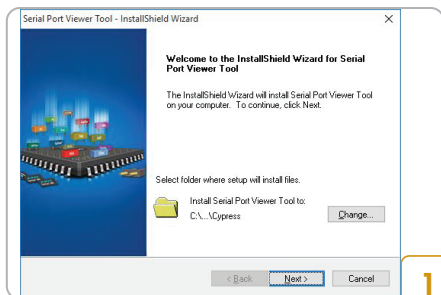


## Kit Contents:

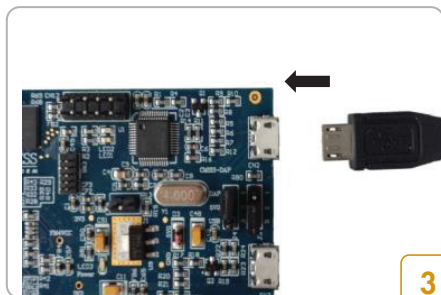
- 1 FM4 S6E2CC Pioneer Board
- 2 USB Standard -A to Micro -B cable
- 3 Quick Start Guide (this document)



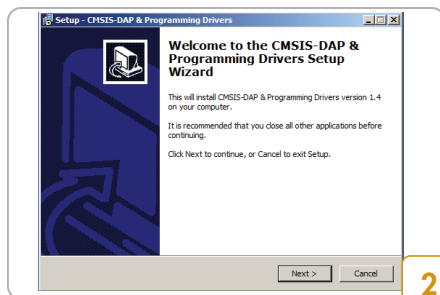
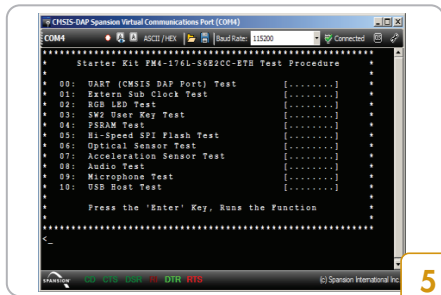
## FM4 S6E2CC PIONEER KIT



- Download the port viewer Terminal (page 3) and install it.



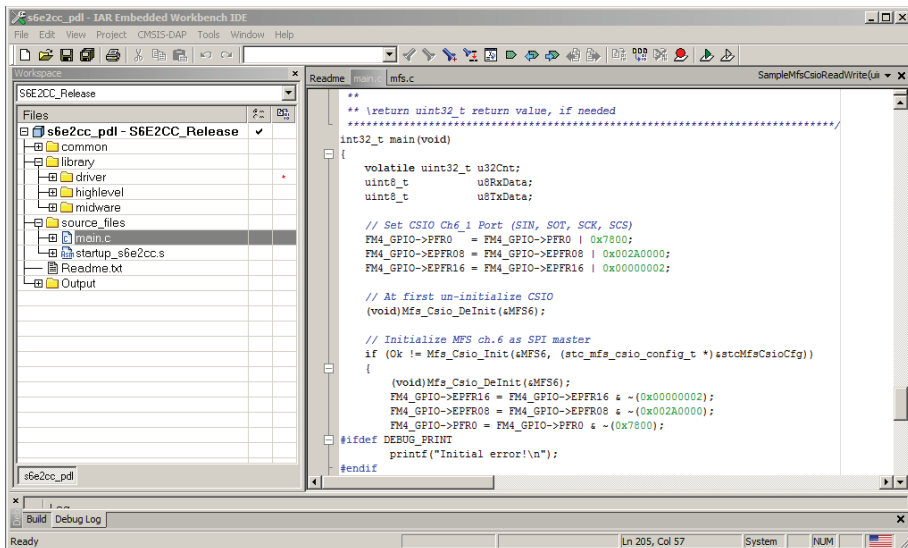
- Connect the board with PC via CN2 using the USB cable.



- Download CMSIS - DAP firmware Package and install the driver.



- Launch the Port viewer Terminal. Configure the baud rate as 115200, and Click the "Disconnected" to connect
- Press "Enter" on your PC keyboard to run the board test demo. Key in the option number and press Enter to run the function.



Download IDE from:

IAR Embedded Workbench - <http://www.iar.com>

Keil µVision IDE - <http://www.Keil.com>

For the following documentations and software:

User Manual

Schematic

Peripheral Driver Library (PDL)

Port Viewer Terminal

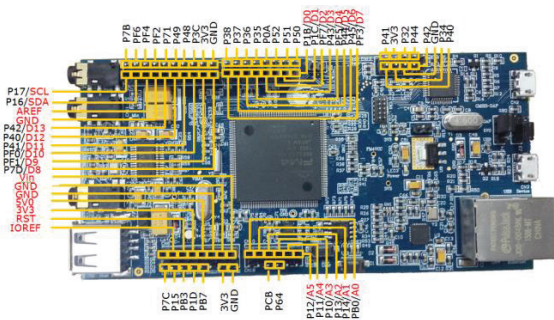
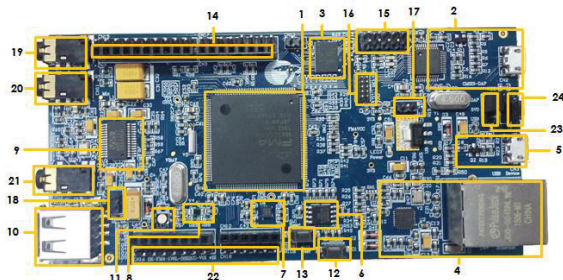
Software labs

CMSIS - DAP firmware (on -board ICE)

USB DIRECT (flash programmer)

Please Visit <http://www.cypress.com/fm4-176l-s6e2cc-eth>

## FM4 S6E2CC PIONEER KIT



■ Arduino Uno R3 (compatible to 3V only)

■ FM4 Pioneer Kit

1. Cypress FM4 MCU S6E2CCA0A
2. CMSIS - DAP Unit
3. Cypress 256Mb SRAM
4. Ethernet PHY and RJ45 connector
5. USB Device connector
6. Cypress 32Mb Quad - SPI Nor flash
7. Accelerometer
8. Phototransistor
9. Stereo Codec
10. USB host connector
11. RGB LED
12. User button
13. Reset button
14. Arduino interface (CN7~CN10)
15. Multicon connector
16. 10Pin JTAG connector
17. J1 MD0 Jumper of MB9AF312K
18. J2 MD0 Jumper of FM4
19. CN5 Jack for headphone
20. CN11 Jack for Microphone
21. CN6 Jack for Linein
22. Free-Pin headers (CN15~CN18)
23. J4 Power supply resource select
24. J3 Serial programming mode select