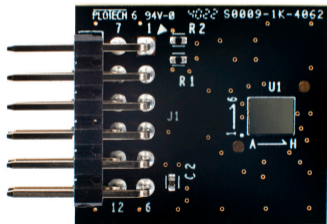


Quick start guide

EVAL-S25FS256T SEMPER™ Nano memory module



- Register your kit:
 - Scan the QR code on the back or
 - Go to softwaretools.infineon.com
- Pmod-compatible; connect the module to any host platform that supports Quad SPI
- Visit SEMPER™ Solutions Hub to download SEMPER™ SDK Base

PEEL
HERE

Visit www.infineon.com/semper-solutions-hub to learn more.



Features

- 1.8-V 256-Mbit NOR Flash with SPI and Quad SPI interfaces
- Supports 1S-1S-1S, 1S-1S-4S, and 1S-4S-4S protocols
- Built-in ECC corrects single-bit errors and detects 2-bit errors (SECEDED) on memory array data
- Ready/Busy (RD/BY# = LOW) indicates that an internal event is ongoing
- Industry-leading standby ($5\ \mu\text{A}$) and deep power-down ($1\ \mu\text{A}$) currents

