

# Quick Setup Guide for DISTANCE2GO

24GHz Support Team  
Version 1.6



# Recommended software and hardware requirements



Machine with Windows OS (Win7 and onwards supported)



Infineon Toolbox based Radar GUI (UX Design Tool)



SEGGER Setup\_JLink\_V600d ([download](#))



XMC-Flasher (Microcontroller Binary Flasher)



Zip/Unzip Software



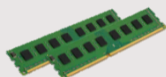
Latest Java Installed ([download](#))



USB Port 2.0 or later (USB Type-C not supported)



200 MB of Free Space on HDD



Free 100 MB of RAM

# Quick setup for DISTANCE2GO – 24GHz Radar

## STEP 1

### Box Content

- a) Programmed DISTANCE2GO Board



- b) Micro USB cable (cable's length may vary)



- c) Welcome Flyer



[www.infineon.com/D2G](http://www.infineon.com/D2G)

Receive Board

## STEP 2

### Sign-In

Register at:  
<https://myicp.infineon.com/>

### Download Authorization

Request download authorization through:  
[24GHzSupport@infineon.com](mailto:24GHzSupport@infineon.com)

### Follow Download & Setup Instruction

Sign-In & Authorization

## STEP 3

### Download Libraries

[Radar\\_D2G\\_fw\\_sw\\_hw\\_all\\_in\\_one.zip](#)

### Read EULA Agreement

Click "YES, I AGREE" and download will start automatically.



### Infineon Tool Download

Download Software at:  
<http://download.hitex.de/RadarGUI>  
Accept *Terms and Condition* and start the download.

### XMC-Flasher Download

Software Download portal at: [Link](#)

### File Downloaded:



Radar\_D2G\_fw\_sw\_hw\_all\_in\_one.zip

Infineon-XMCFlasher-GS-v01\_06-E

InfineonToolboxRadarGUI\_v1-1-0

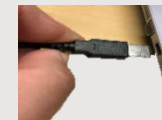
Download GUI and Libraries

## STEP 4

Insert micro USB cable into DISTANCE2GO as shown below



Insert the USB connector into PC USB port (2.0 or higher)



Red LED flashes when board is powered up



Connect board & terminal

# Quick setup for DISTANCE2GO – 24GHz Radar



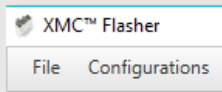
## STEP 5 (optional)

### Firmware (FW) Update

Connect USB cable to the JTAG port; use micro USB port on the right of the board as shown below



**Extract** Infineon-XMCFlasher-GS-v01\_06-EN and double-click on **XMCFlasher Executable Jar File (25 MB)** to run and open the GUI



Click on *Menu Configuration* → *Setup* → *Select Debugger Type*:

Select SEGGER option from drop-down menu (if option is not available, install J-Link V6.00d by using this [Link](#)); once completed click on *Connect*



Select XMC4200-256 and follow instructions to flash/reprogram  $\mu$ C

Update  $\mu$ C FW

## STEP 6

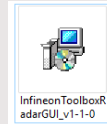
### Extract Files

Radar\_Distance2Go+fw\_sw\_gui\_all\_in\_one; folder contains binary and source code



### Install Infineon Tool

Double Click on



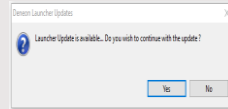
**InfineonToolboxRadarGUI** setup file, then follow the instruction to install. Please select the Desktop shortcut option during installation.

### Run Infineon Tool

Double Click on



An update message will prompt



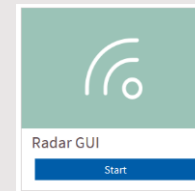
**Always update to the latest version** when prompt or cloud icon is available.

Install & Run GUI

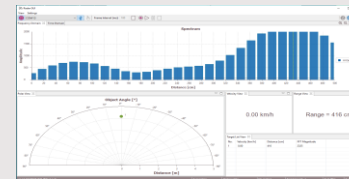
## STEP 7

### Infineon GUI

To Evaluate RADAR demo, click Start on the RADAR GUI shown here



Real-time data is now visible on your screen



Some evaluation boards may require a firmware update; the Infineon Tool will prompt a message if FW update is available; in that case execute STEP 5 (Optional)

Installation Complete

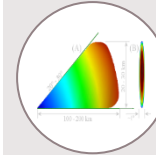
## Enjoy the Demo



Weatherproof



Accurate & Precise



HW Adjustable Area Coverage



Energy Efficient



Form-Factor Enabled



Part of your life. Part of tomorrow.

