

# Quick Start Guide: Distance2Go

December 2018



# Quick Setup for Distance2Go (1/2)

## STEP 1

### Box Contents

1. Programmed Distance2Go Board



2. Micro USB cable



3. Foldable corner reflector



For board information:

[www.infineon.com/demo-distance2go](http://www.infineon.com/demo-distance2go)

## STEP 2

### Infineon Toolbox

Go to: [Link](#)

1. Click on **'Download and Install Infineon Toolbox'** (136 MB)
2. **'Accept'** the license agreement.
3. Run **'infineon-toolbox-launcher-setup-win-x86.exe'**



4. Finish installation. Create a desktop shortcut.

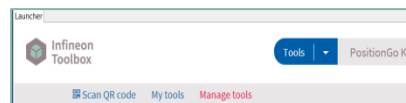


Infineon Toolbox

## STEP 3

### Install Position2Go kit – XMCF flasher + RadarGUI

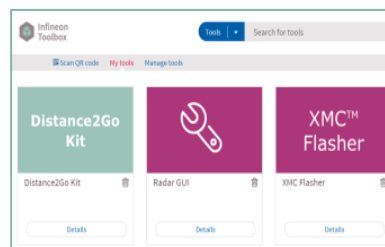
1. Open **'Infineon Toolbox'**
2. Click on **'Manage tools'** tab
3. Search for **'Distance2Go kit'**



4. Click on **'Install'**



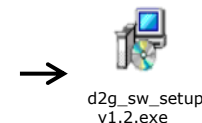
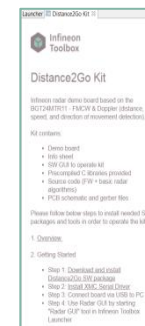
5. **'Accept'** the license agreement.
6. Finish installation.



## STEP 4 (optional)

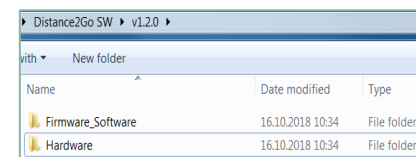
### Download SW+HW package

1. Open **'Infineon Toolbox'**
2. Click on **'Distance2Go Kit'**
3. Follow the instructions mentioned on the left tab (2. Getting Started)



d2g\_sw\_setup\_v1.2.exe

4. Save the setup file and run it.
5. Browse to preferred location to store the files.



Receive Board

Download Infineon Toolbox

Download Distance2Go kit

Get SW + HW package

# Quick Setup for Distance2Go (2/2)

## STEP5

### Connect Board

1. Insert micro USB cable into Distance2Go (main board)



2. Insert the USB connector into PC USB port



**\*If the device driver is not recognized**

Right click on 'My Computer' → Manage → Device Manager → Other devices → Right click on 'Unknown device' → Update Driver Software → Browse → Distance2Go\_FW (downloaded in Step 4) → Firmware\_Software → Driver → XMC4200 serial driver (unzipped folder)

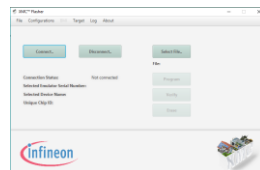
## STEP6 (Optional)

### Firmware (FW) Update

1. Download and install Segger JLINK-Lite driver: [Link](#)
2. Connect USB to debugger side



3. Open *InfineonToolbox* → *XMCFlasher*



4. Click on **Connect** → Select **XMC4200-256**.
5. Click on **Select file** → Browse to **Distance2Go\_FW (downloaded in Step 4) → Firmware\_Software → Binary → Debug → .hex file → Program**

## STEP7 (optional)

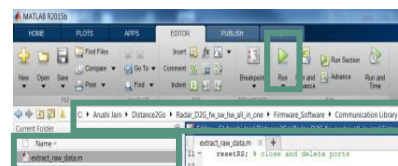
### Source Code

Download and Install DAVE IDE Tool : [Link](#)

1. Import DAVE projects and debug.

### MATLAB Interface

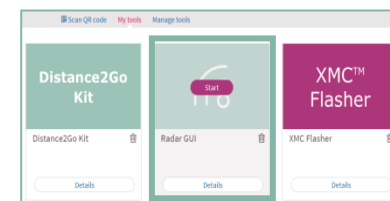
1. Open the folder from *Step 4*.
2. Go to: *Firmware\_Software* → *Communication Library*. Unzip *ComLib\_C\_Matlab\_Interface.zip*
3. Go to: *ComLib\_Matlab\_Interface* → *matlab* → *RadarSystemExamples* → *GettingStarted*. Copy the path.
4. Open MATLAB. Paste the path in the top tab. *'extract\_raw\_data.m'* file will show up on the left tab.
5. Connect board as *Step 5*.
6. Click on **'Run'** to see raw data.



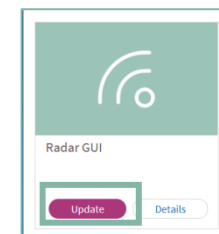
## STEP8

### Radar GUI

1. Connect board as *Step 5*
2. Open *InfineonToolbox* → *RadarGUI*



3. Always use the latest Radar GUI



**Connect Board and Install Driver**

**Update µC FW**

**FW Development**

**Run Demo!**



Part of your life. Part of tomorrow.

