



产品简介

CoolMOS™ CE

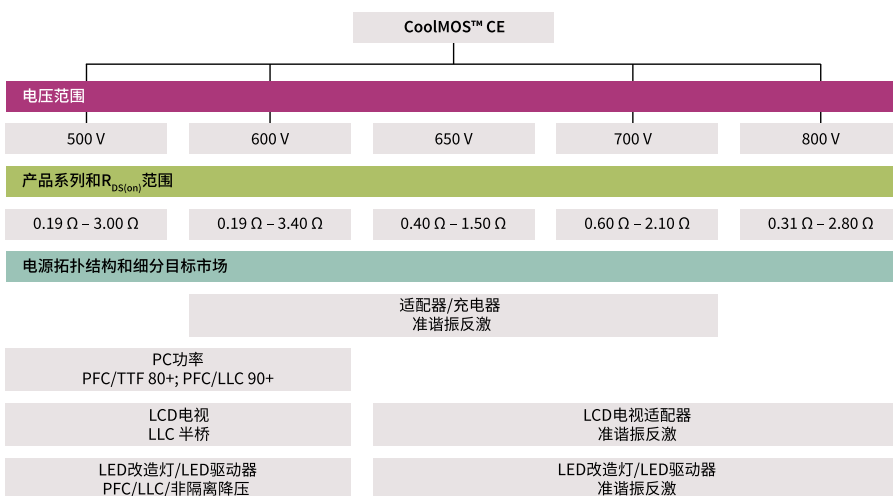
适合消费者类电子和照明应用的最具性价比SJ器件

CoolMOS™ CE是英飞凌的市场领先高压功率MOSFET的技术平台根据超级结原理(SJ)设计并用于满足消费电子需求。随着产品系列的扩大,英飞凌现在提供500 V, 600 V, 650 V, 700 V和800 V设备电压规格,面向移动设备低功率充电器, LCD, LED电视和LED照明应用。

这些系列的CoolMOS™经过了成本优化以满足消费电子中的典型需求,并且在价格仍具吸引力的同时保证CoolMOS™历经考验的质量和可靠性。

CoolMOS™ CE适用于硬开关和软开关应用,并且作为现代SJ实现了较低的导通损耗和开关损耗,同时提供了效率并最终降低了功耗。CoolMOS™ CE的易用性可以帮助客户缩短设计周期,在急剧变化的市场上保持竞争力。

CoolMOS™ CE面向广泛的消费类和照明类应用



主要特性

热行为特性

- › 开放式外壳时的设备温度 $\leq 90^{\circ}\text{C}$
- › 封闭式外壳时的温度 $\leq 50^{\circ}\text{C}/70^{\circ}\text{C}$
- › EN55022B标准中的EMI
- › 易于使用,设计快速

主要优势

- › 低导通损耗,得益于典型 $R_{DS(on)}$ 与额定 $R_{DS(on)}$ 之间的裕量较大
- › 低开关损耗,得益于最优化输出电容(E_{oss})
- › 最优化EMI,用于平衡开关速度和EMI行为特性
- › 良好的可控性,得益于给定集成 R_G

应用

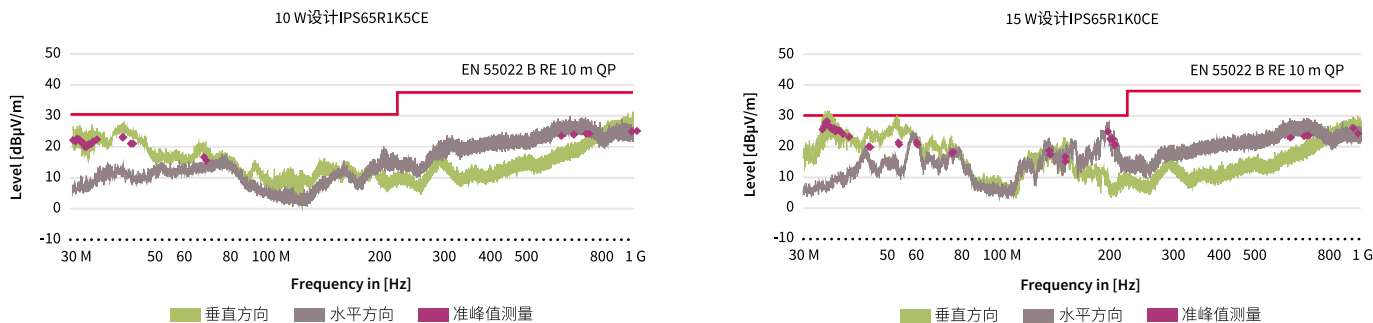
- › 低功率充电器
- › 适配器
- › PC功率
- › LCD电视
- › LED改造灯
- › LED驱动器



CoolMOS™ CE

适合消费者和照明应用的最具性价比SJ器件

用于移动设备的低功率充电器的CoolMOS™ CE EMI性能



CoolMOS™ CE满足10 W和15 W充电器的EMI准峰值要求

产品系列

$R_{DS(on)}$ [mΩ]	TO-220 FullPAK	TO-220	TO-252 DPAK	TO-251 IPAK	TO-247	SOT-223	TO-220 FullPAK Narrow Lead
3000			IPD50R3K0CE	IPU50R3K0CE		IPN50R3K0CE	
2000			IPD50R2K0CE	IPU50R2K0CE		IPN50R2K0CE	
1400			IPD50R1K4CE	IPU50R1K4CE		IPN50R1K4CE	
950	IPA50R950CE		IPD50R950CE	IPU50R950CE		IPN50R950CE	
800	IPA50R800CE		IPD50R800CE			IPN50R800CE	
650	IPA50R650CE		IPD50R650CE			IPN50R650CE	
500	IPA50R500CE	IPP50R500CE	IPD50R500CE				IPAN50R500CE
380	IPA50R380CE	IPP50R380CE	IPD50R380CE				
280	IPA50R280CE	IPP50R280CE	IPD50R280CE		IPW50R280CE		
190	IPA50R190CE	IPP50R190CE			IPW50R190CE		

$R_{DS(on)}$ [mΩ]	TO-220 FullPAK	TO-252 DPAK	TO-251 IPAK Short Lead	TO-251 IPAK	SOT-223	TO-220 FullPAK Wide Creepage	TO-220 FullPAK Narrow Lead
3300		IPD60R3K4CE	IPS60R3K4CE	IPU60R3K4CE	IPN60R3K4CE		
2100		IPD60R2K1CE	IPS60R2K1CE	IPU60R2K1CE	IPN60R2K1CE		
1500	IPA60R1K5CE	IPD60R1K5CE	IPS60R1K5CE	IPU60R1K5CE	IPN60R1K5CE		
1000	IPA60R1K0CE	IPD60R1K0CE	IPS60R1K0CE	IPU60R1K0CE	IPN60R1K0CE		
800	IPA60R800CE	IPD60R800CE	IPS60R800CE				IPAN60R800CE
650/600	IPA60R650CE	IPD60R650CE	IPS60R650CE			IPAW60R600CE	IPAN60R650CE
460	IPA60R460CE	IPD60R460CE	IPS60R460CE				
400/380	IPA60R400CE	IPD60R400CE	IPS60R400CE			IPAW60R380CE	
280						IPAW60R280CE	
190						IPAW60R190CE	

$R_{DS(on)}$ [mΩ]	TO-220 FullPAK	TO-252 DPAK	TO-251 IPAK Short Lead	SOT-223	TO-220 FullPAK Narrow Lead
1500	IPA65R1K5CE	IPD65R1K5CE	IPS65R1K5CE	IPN65R1K5CE	
1000	IPA65R1K0CE	IPD65R1K0CE	IPS65R1K0CE		
650	IPA65R650CE	IPD65R650CE	IPS65R650CE		IPAN65R650CE
400	IPA65R400CE	IPD65R400CE	IPS65R400CE		

$R_{DS(on)}$ [mΩ]	TO-220 FullPAK	TO-252 DPAK	TO-251 IPAK
2800		IPD80R2K8CE	IPU80R2K8CE
1400	IPA80R1K4CE	IPD80R1K4CE	IPU80R1K4CE
1000	IPA80R1K0CE	IPD80R1K0CE	IPU80R1K0CE
650	IPA80R650CE		
460	IPA80R460CE		
310	IPA80R310CE		

$R_{DS(on)}$ [mΩ]	TO-262 I ² PAK	TO-252 DPAK	TO-251 IPAK Short Lead	SOT-223	TO-251 IPAK Short Lead with ISO Standoff	TO-220 FullPAK Wide Creepage
2000/2100		IPD70R2K0CE	IPS70R2K0CE	IPN70R2K0CE	IPSA70R2K0CE	
1400/1500		IPD70R1K4CE	IPS70R1K4CE	IPN70R1K4CE	IPSA70R1K4CE	
1000				IPN70R1K0CE		
950	IPi70R950CE	IPD70R950CE	IPS70R950CE		IPSA70R950CE	IPAW70R950CE
600		IPD70R600CE	IPS70R600CE		IPSA70R600CE	IPAW70R600CE

Published by
Infineon Technologies Austria AG
9500 Villach, Austria

© 2017 Infineon Technologies AG.
All Rights Reserved.

Please note!

THIS DOCUMENT IS FOR INFORMATION PURPOSES ONLY AND ANY INFORMATION GIVEN HEREIN SHALL IN NO EVENT BE REGARDED AS A WARRANTY, GUARANTEE OR DESCRIPTION OF ANY FUNCTIONALITY, CONDITIONS AND/OR QUALITY OF OUR PRODUCTS OR ANY SUITABILITY FOR A PARTICULAR PURPOSE. WITH REGARD TO THE TECHNICAL SPECIFICATIONS OF OUR PRODUCTS, WE KINDLY ASK YOU TO REFER TO THE RELEVANT PRODUCT DATA SHEETS PROVIDED BY US. OUR CUSTOMERS AND THEIR TECHNICAL DEPARTMENTS ARE REQUIRED TO EVALUATE THE SUITABILITY OF OUR PRODUCTS FOR THE INTENDED APPLICATION.

WE RESERVE THE RIGHT TO CHANGE THIS DOCUMENT AND/OR THE INFORMATION GIVEN HEREIN AT ANY TIME.

Additional information

For further information on technologies, our products, the application of our products, delivery terms and conditions and/or prices please contact your nearest Infineon Technologies office (www.infineon.com).

Warnings

Due to technical requirements, our products may contain dangerous substances. For information on the types in question please contact your nearest Infineon Technologies office.

Except as otherwise explicitly approved by us in a written document signed by authorized representatives of Infineon Technologies, our products may not be used in any life endangering applications, including but not limited to medical, nuclear, military, life critical or any other applications where a failure of the product or any consequences of the use thereof can result in personal injury.