

PowIRCenter GUI Quick-Start Guide

Quick Start: PowIRCenter GUI

Revision History & Pre-requisites



Revision Date	Change History
21 Jan 2016	Updated with "load config / write all registers" pictures & instructions
12 Jul 2015	1 st release

■ Pre-Requisites

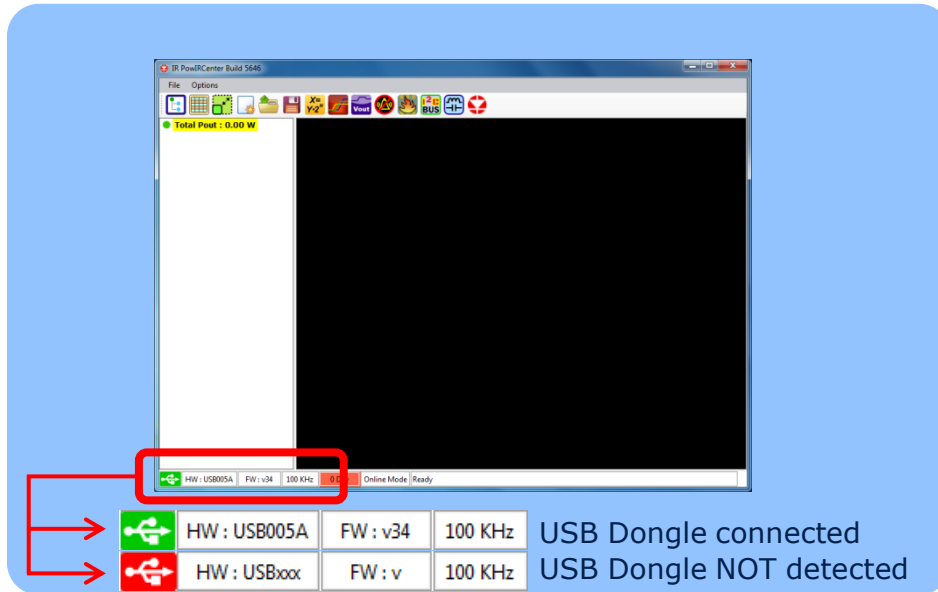
- ❑ Correctly installed PowIRCenter GUI
- ❑ USB005 Dongle connecting a PC to an Infineon DC/DC Voltage regulator IC

Quick Start: PowIRCenter GUI

Establishing Communication & Discovering Devices

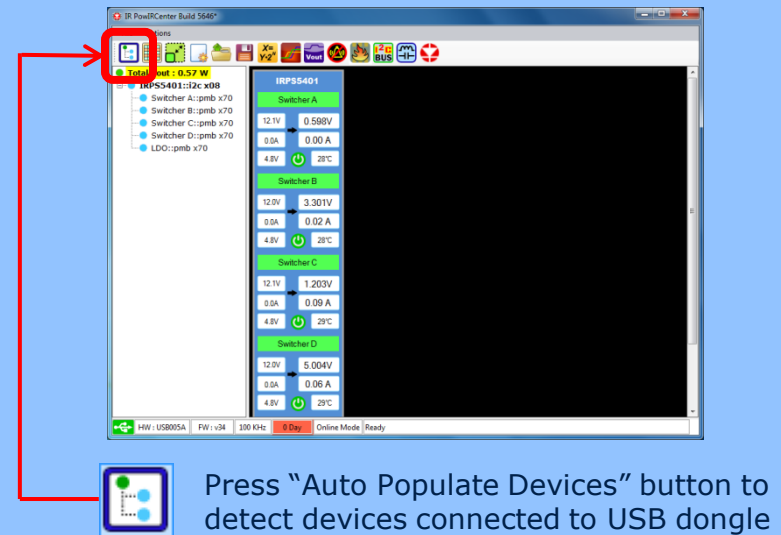
Step 1

Start PowIRCenter & Connect USB Dongle
Check the Dongle is detected



Step 2

Detect devices on the bus



Quick Start: PowIRCenter GUI

Status & Menu Options



Set up Sequencing Set up Margining & transitions Clear Fault Registers Multi-Device Programmer **Applies to all devices detected**

IRPS5401

Switcher A

12.1V	0.598V
0.0A	0.00 A
4.8V	28°C

Switcher B

12.0V	3.301V
0.0A	0.02 A
4.8V	28°C

Switcher C

12.1V	1.203V
0.0A	0.09 A
4.8V	29°C

Switcher D

12.0V	5.004V
0.0A	0.06 A
4.8V	29°C

Labels and Connections:

- Set up Sequencing
- Set up Margining & transitions
- Clear Fault Registers
- Multi-Device Programmer
- Applies to all devices detected
- Total Pout : 0.57 W
- IRPS5401::i2c x08
- Switcher A::pmb x70
- Switcher B::pmb x70
- Switcher C::pmb x70
- Switcher D::pmb x70
- LDO::pmb x70
- Input voltage
- Input current
- Controller Bias voltage
- Output voltage
- Output current
- Device temperature
- Dongle version
- Firmware version
- PMBus speed
- HW : USB005A
- FW : v34
- 100 KHz
- 0 Day
- Online Mode
- Ready

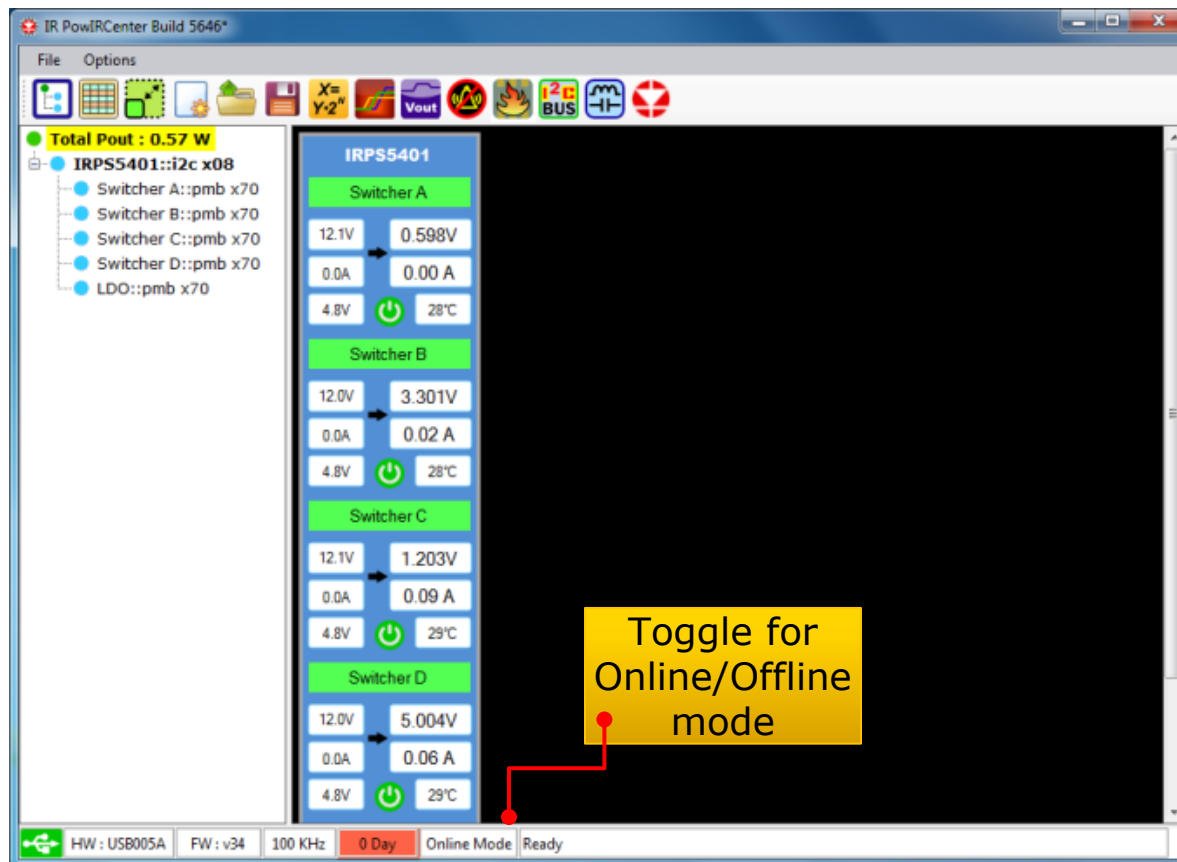
Quick Start: PowIRCenter GUI

On-line / Off-line mode



“**On-line**” is the normal operating mode and requires a device to be connected. The GUI displays the contents of the devices registers.

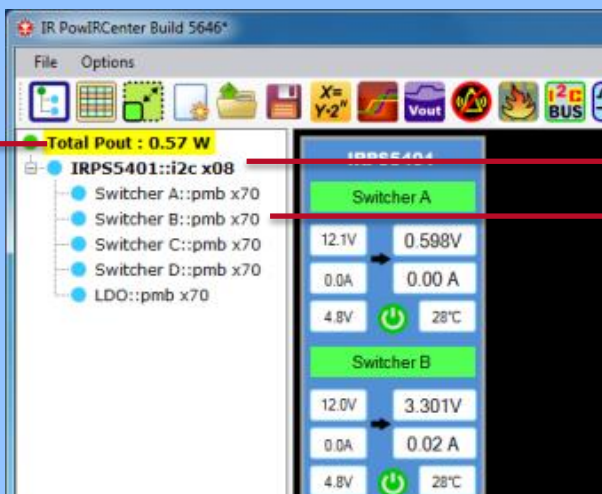
“**Off-line**” is a mode to allow use of PMBus commands to set up a config file without a device being connected.



Quick Start: PowIRCenter GUI

Navigation

Access different views



IRPS5401::i2c x08

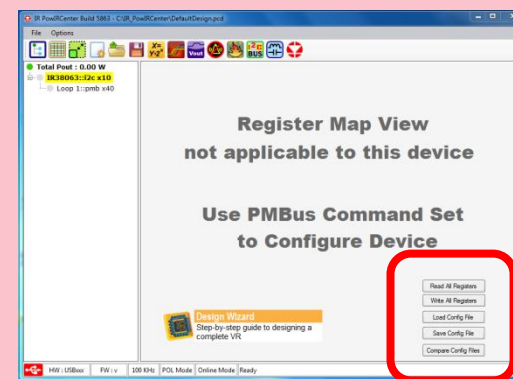
Click **device name** to access save / load configuration files menu.



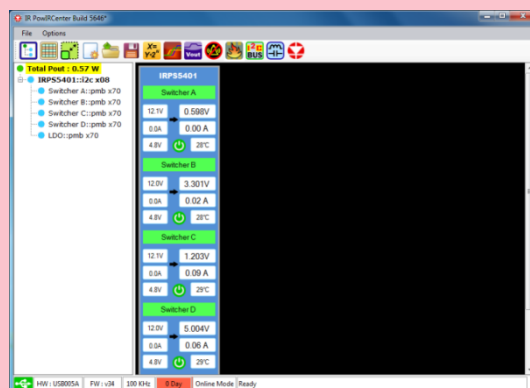
Switcher B::pmb x70

Click **channel** to access PMBus commands for selected channel

Access Load/Save Config



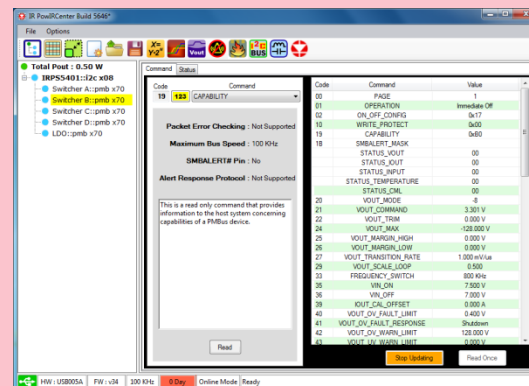
Board View



Total Pout : 0.57 W

Click **Total Pout** to return to the Board View

Access PMBus commands

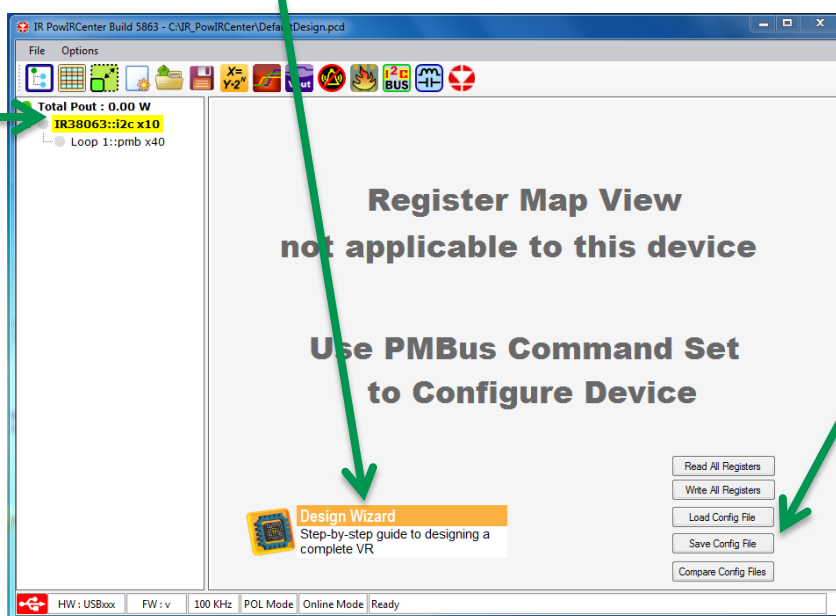


Quick Start: PowIRCenter GUI

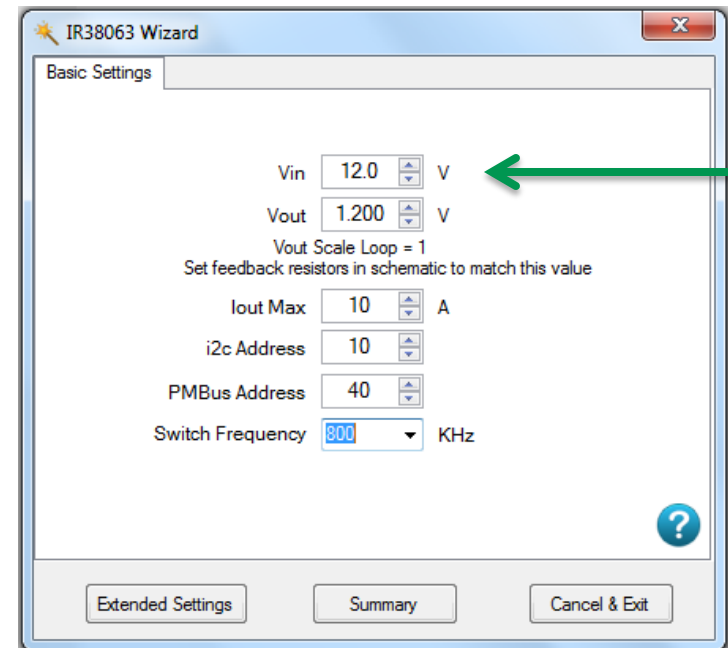
Configuration Wizard

There are 66+ PMBus commands. Use the Wizard to quickly set up all the parameters to give a good starting configuration.

- ❑ Select the I2C view
- ❑ Click "Design Wizard"



- ❑ Provide 6 input parameters (in basic mode) and the Wizard will create a complete starter configuration.
- ❑ The config can be saved for later use



Quick Start: PowIRCenter GUI:

Send PMBus Commands

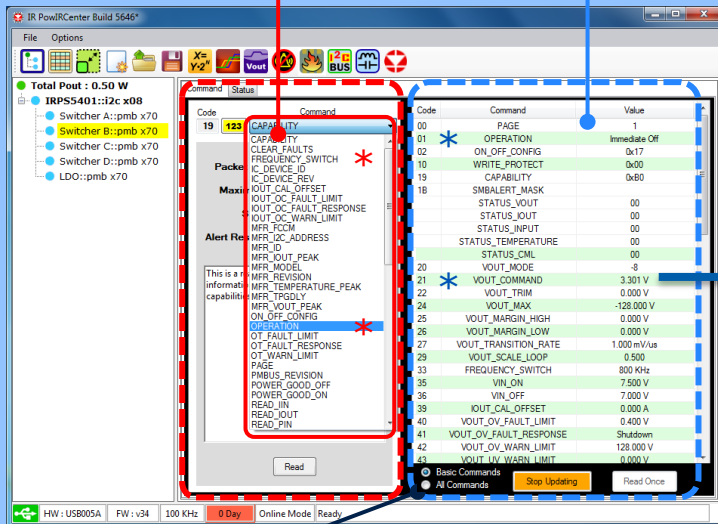
Select Command for Selected Channel

Select command from pull down List

or

Click the command in right panel.

PMBus Command Screen



■ Usage

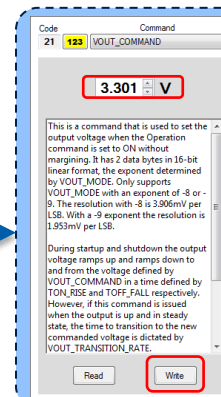
□ PMBus commands are used to

- Read status
- Change configuration
- Save configuration into NVM

Example Command

Change Vout (Command: VOUT_COMMAND)

1. Enter Vout voltage.
2. Press enter after entering value.
3. Click "Write" button to send the command.



Filter PMBus Commands

Click "All Commands" or "Basic Commands" to filter the view of available PMBus commands

Quick Start: PowIRCenter GUI



Saving a Config File into NVM

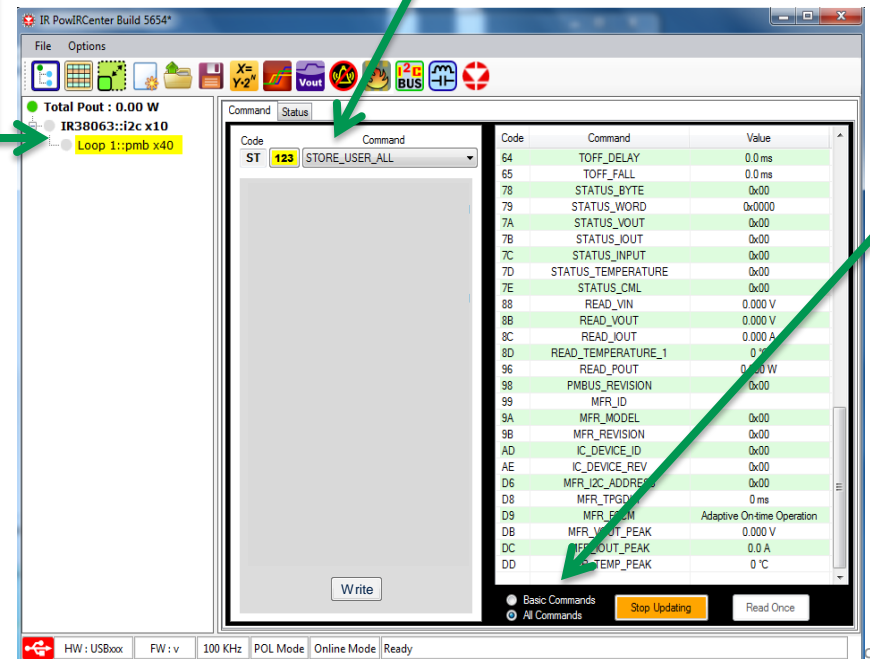
- Load the Config File (or use PMBus commands to set up the required configuration)

- Select the I2C view
- Click "Load Config File" to load the a configuration into the GUI
- Click "Write All registers" to transfer the configuration into the devices operating memory (this step can be skipped if *'Options->Automatically Write Config File after Loading'* is enabled)



- Write to the IC's non-volatile memory (NVM)


- Select the PMBus view
- Ensure "All Commands" is selected
- Send "STORE_USER_ALL" command



Quick Start: PowIRCenter GUI

Programming Multiple Parts on a Board



- The PowIRCenter GUI contains a utility to program multiple parts at once that are installed on a customer system board:
 1. Load or create your system configuration in the PowIRCenter GUI
 2. Launch the Multiple Device Programmer Interface (press the  icon)
 3. Select the devices that you want programmed
 4. For each device, click and select the appropriate config file
 5. Select "Program & Verify" to transfer the configurations into your selected devices

