



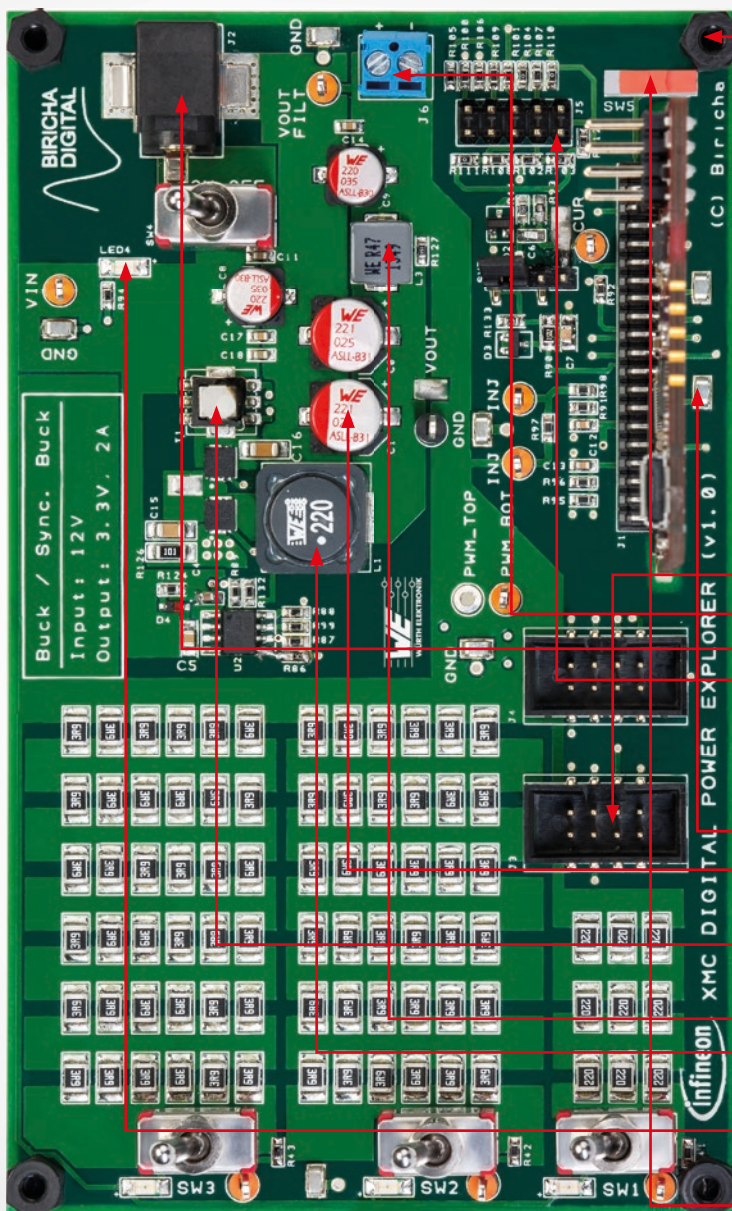
Digital Power is calling

XMC Digital Power Explorer Kit

Two technical live demos per day

With Dr. Ali Shirsavar,
Director of Biricha Digital Ltd.
Booth 7-219 (Würth Elektronik)

Everyday during PCIM
10:30 am & 1:30 pm
No registration needed



Connectors

WR-BHD
WR-TBL
WR-DC
WR-PHD

Assembly Products

WA-SNTI

Capacitors

WCAP-CSGP
WCAP-ASLL

Transformers

WE-CST

Power Inductors

WE-LHMI
WE-PD

LED

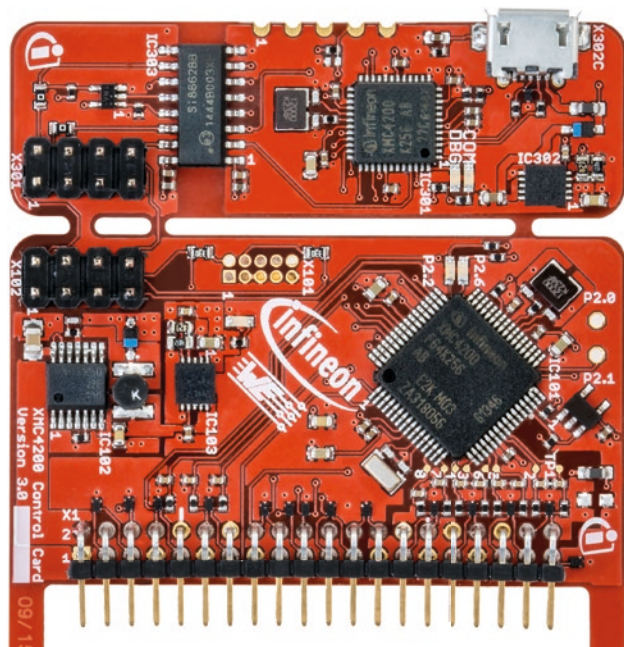
WL-SMCW

Switches

WS-SLTV

Simplify digital power

With the new XMC Digital Power Explorer Kit



- Start on digital power with a complete out of the box **Infineon** solution (hardware, software & load)
- Your high-performance designs married with top-class **Würth Elektronik** components
- Professional hands-on training on digital power by **Biricha Digital** and **Infineon** coming soon

Pre-order your kit:

digital-power-is-calling@we-online.com

digital-power-is-calling@infineon.com

For more information please visit:

www.we-online.com/digital-power-is-calling

www.infineon.com/digital-power-is-calling

Synchronous buck power board containing:

- BSC0924NDI Dual N-Channel OptiMOS™ MOSFETs
- IRS2011S High and Low Side Gate Driver

2 different Control Card options:

- XMC1300 - ARM® Cortex®-M0 MCU
- XMC4200 - ARM® Cortex®-M4F MCU



**Less carbon emissions,
less nuclear and fossil
energy use thanks to
higher achievable
efficiencies.**

Two technical live demos per day

With Dr. Ali Shirsavar,
Director of Biricha Digital Ltd.
Booth 7-219 (Würth Elektronik)

Everyday during PCIM

10:30 am & 1:30 pm

No registration needed