

**Please note that Cypress is an Infineon Technologies Company.**

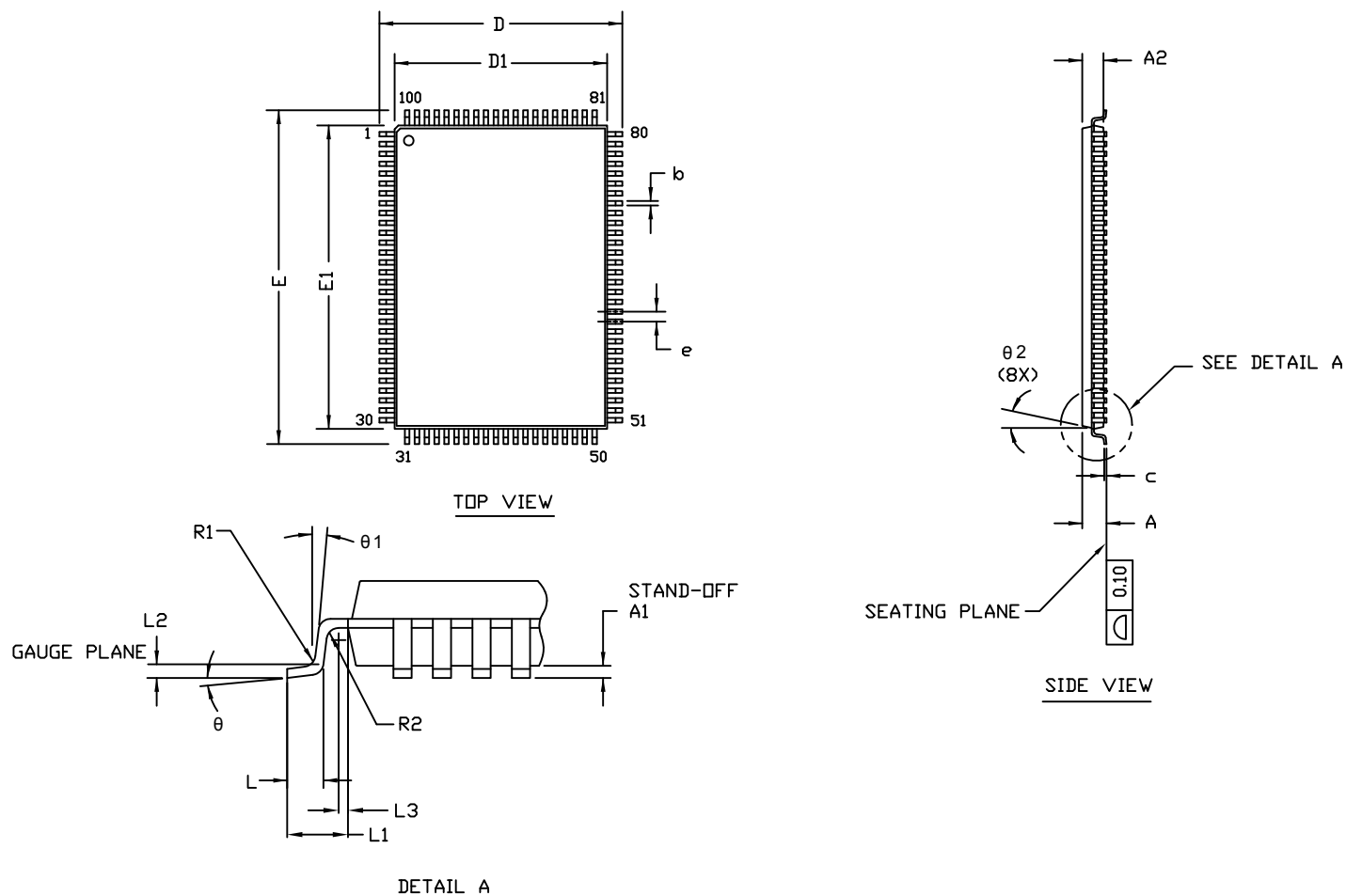
The document following this cover page is marked as “Cypress” document as this is the company that originally developed the product. Please note that Infineon will continue to offer the product to new and existing customers as part of the Infineon product portfolio.

**Continuity of document content**

The fact that Infineon offers the following product as part of the Infineon product portfolio does not lead to any changes to this document. Future revisions will occur when appropriate, and any changes will be set out on the document history page.

**Continuity of ordering part numbers**

Infineon continues to support existing part numbers. Please continue to use the ordering part numbers listed in the datasheet for ordering.



SYMBOL	DIMENSIONS		
	MIN.	NOM.	MAX.
A	—	—	1.60
A1	0.05	—	0.15
A2	1.35	1.40	1.45
D	15.80	16.00	16.20
D1	13.90	14.00	14.10
E	21.80	22.00	22.20
E1	19.90	20.00	20.10
R1	0.08	—	0.20
R2	0.08	—	0.20
$\theta$	0°	—	7°
$\theta 1$	0°	—	—
$\theta 2$	11°	12°	13°
c	—	—	0.20
b	0.22	0.30	0.38
L	0.45	0.60	0.75
L1	1.00 REF		
L2	0.25 BSC		
L3	0.20	—	—
e	0.65 TYP		

**NOTE:**

1. ALL DIMENSIONS ARE IN MILLIMETERS.
2. BODY LENGTH DIMENSION DOES NOT INCLUDE MOLD PROTRUSION/END FLASH. MOLD PROTRUSION/END FLASH SHALL NOT EXCEED 0.0098 in (0.25 mm) PER SIDE. BODY LENGTH DIMENSIONS ARE MAX PLASTIC BODY SIZE INCLUDING MOLD MISMATCH.
3. JEDEC SPECIFICATION NO. REF: MS-026.

REVISIONS			
Rev	ECN No.	Orig. of change	Reason for Revision
**	570		NEW RELEASE
*A	49399		DEL. NOTES, CHG. TITLE
*B	412838		ADD NOTES -JEDEC REFERENCE MS-026 -MOLD PROTRUSION/END FLASH INFORMATION
*C	2859822		Changed template, & title from 100LD TQFP (14 X 20 X 1.4) PKG OUTLINE to PACKAGE OUTLINE, 100LD TQFP 14X14X1.4 MM A100RA.
*D	3146953		ECN SUNSET NO CHANGE
*E	4257033	KTQAD/XANC	SUNSET REVIEW. CHANGED DRAWING TEMPLATE.
*F	5424110	KOTA	CHANGED TO NEW POD FORMAT. CHANGED POD TITLE. ADDED MISSING DIMENSIONS FOR L1 AND L3.
*G	5520002	KOTA	Revert drawing title back to "PACKAGE OUTLINE, 100 LEAD TQFP 14.0X20.0X1.4 MM A100RA".

THIS DRAWING CONTAINS INFORMATION WHICH IS THE PROPRIETARY PROPERTY OF CYPRESS SEMICONDUCTOR CORPORATION. THIS DRAWING IS RECEIVED IN CONFIDENCE AND ITS CONTENTS MAY NOT BE DISCLOSED WITHOUT WRITTEN CONSENT OF CYPRESS SEMICONDUCTOR CORPORATION.

PACKAGE  
CODE(S)

A100RA

DRAWN BY  
KOTA  
APPROVED BY  
CS

DATE  
14-NOV-16  
DATE  
14-NOV-16



CYPRESS  
Company Confidential

TITLE PACKAGE OUTLINE, 100 LEAD TQFP  
14.0X20.0X1.4 MM A100RA

SPEC NO. 51-85050

REV  
\*G

SCALE : TO FIT

SHEET 2 OF 2