

ModusToolbox™ Dashboard user guide

Version 3.1.0

About this document

Scope and purpose

The ModusToolbox™ Dashboard helps you get started using the various tools with easy access to documentation and training material, as well as a simple path for creating applications, as well as creating and editing BSPs.

Document conventions

Convention	Explanation
Bold	Emphasizes heading levels, column headings, menus and sub-menus
<i>Italics</i>	Denotes file names and paths.
Courier New	Denotes APIs, functions, interrupt handlers, events, data types, error handlers, file/folder names, directories, command line inputs, code snippets
File > New	Indicates that a cascading sub-menu opens when you select a menu item

Reference documents

Refer to the following documents for more information, as needed:

- [ModusToolbox™ tools package user guide](#)
- [Project Creator user guide](#)
- [BSP Assistant user guide](#)



Table of contents

Table of contents

1	Launch the Dashboard	3
2	GUI description	4
2.1	Menus.....	4
2.2	Learn panel.....	4
2.3	Create panel	5
3	Version changes	7

Launch the Dashboard

1 Launch the Dashboard

On Windows, you can launch the Dashboard immediately after installing the ModusToolbox™ tools package by leaving the check box enabled on the final step of the installation process.

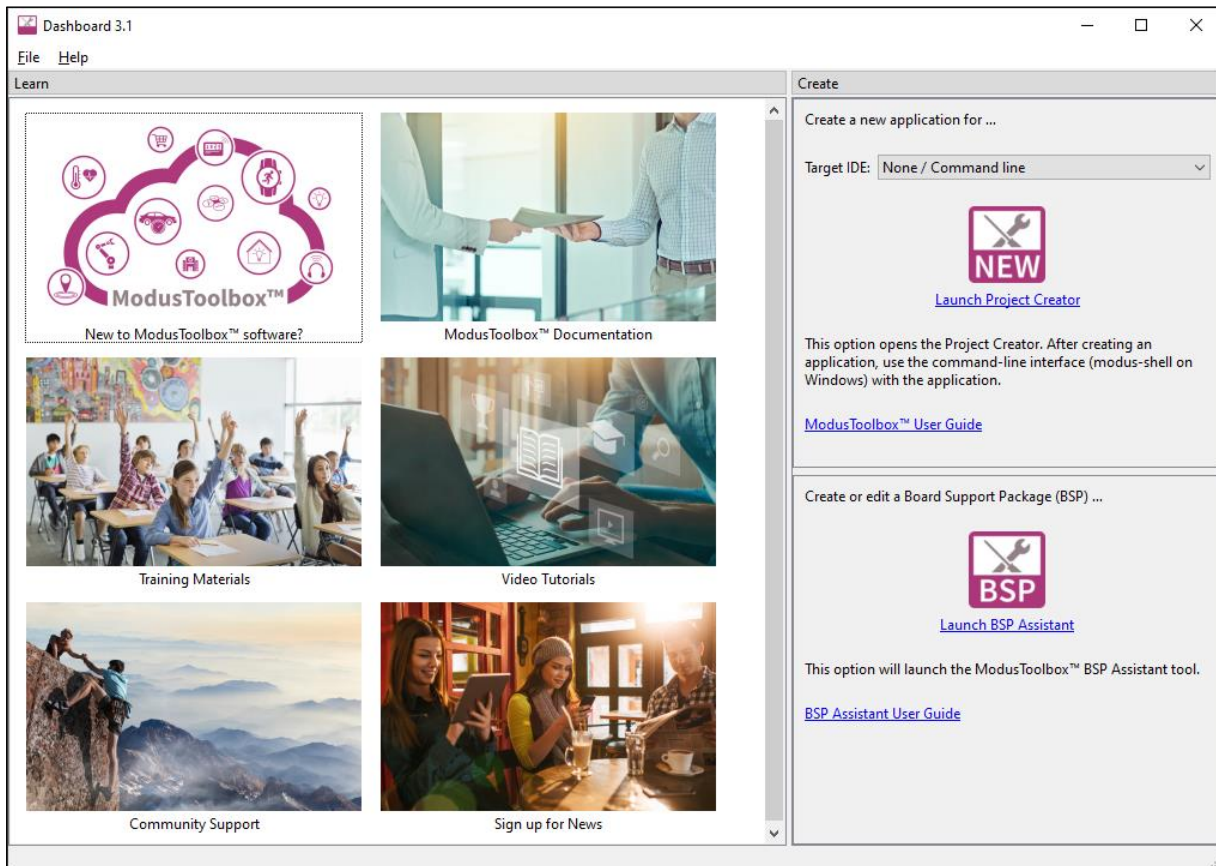
For all OS, you can launch the Dashboard by running its executable as applicable for your operating system (for example, select it using the Windows **Start** menu or use the Finder in macOS). By default, the executable is installed here:

<install_dir>/ModusToolbox/tools_<version>/dashboard/

GUI description

2 GUI description

The Dashboard has two panels: Learn and Create.



2.1 Menus

2.1.1 File

This menu includes the **Exit** command to close the Dashboard.

2.1.2 Help

- **View Help** –Opens this document.
- **About** –Opens the About box for version information, with links to open Infineon.com and the current session log file.

2.2 Learn panel

This panel contains links to documentation and training material. The current links include:

- **New to ModusToolbox™ software?** – Provides a quick introduction to the ModusToolbox™ ecosystem for new users.
- **ModusToolbox™ Documentation** – Opens the documentation landing page with links to all ModusToolbox™ user documentation provided on disk and on the web.
- **Training Materials** – Opens the ModusToolbox™ training pages on GitHub with training manuals and exercises for several different levels: getting started, MCUs, Wi-Fi and Machine Learning, etc.

GUI description

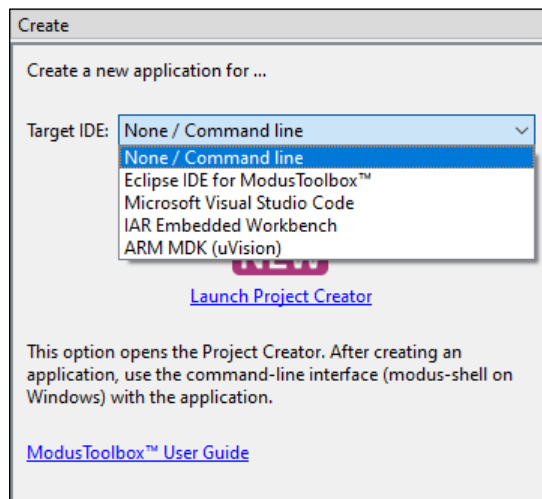
- **Video Tutorials** – Opens the Infineon videos webpage to access all the ModusToolbox™ videos available.
- **Community Support** – Opens the Infineon community pages dedicated to ModusToolbox™ software and related devices.
- **Sign up for News** – Opens the Infineon news feed page, where you can register for the easiest way to get all the essential as well as new information about ModusToolbox™ software.

2.3 Create panel

This panel allows you to create a new ModusToolbox™ application, as well as create and edit a BSP.

2.3.1 New application

Use the pull-down menu to select the IDE (or None / Command line) for which you want to create an application.



If you select Eclipse IDE for ModusToolbox™, this option will open the Eclipse IDE included with the ModusToolbox™ tools package. Use the "New Application" link in the Quick Panel to create the application. Refer to the [Eclipse IDE for ModusToolbox™ user guide](#) for more details.

If you select any other option, this will open the ModusToolbox™ Project Creator tool, which provides the option to create files for the desired selection. Refer to the [Project Creator user guide](#) for more details.

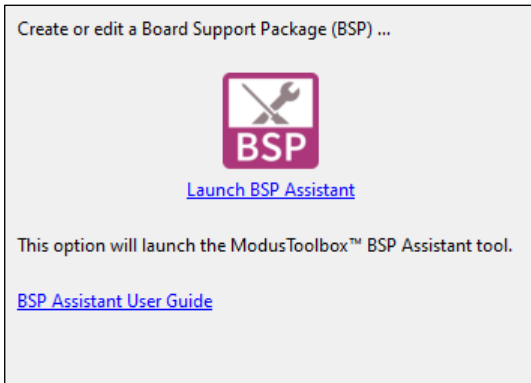
Additionally, there is a user guide for each of the supported selections:

- [Visual Studio Code](#)
- [Keil μVision](#)
- [IAR Embedded Workbench](#)
- None/ Command line: Refer to the [ModusToolbox™ tools package user guide](#) for basic command line options.

GUI description

2.3.2 BSP

If you want to create a new BSP or edit an existing BSP, use this option to open the BSP Assistant. Refer to the [BSP Assistant user guide](#) for more details.



Version changes

3 Version changes

This section lists and describes the changes for each version of this tool.

Version	Change Descriptions
3.1.0	New tool.

Revision history

Revision history

Revision	Date	Description
**	2023-05-10	New document.

Trademarks

All referenced product or service names and trademarks are the property of their respective owners.

Edition 2023-05-10

Published by

Infineon Technologies AG

81726 Munich, Germany

© 2023 Infineon Technologies AG.

All Rights Reserved.

Do you have a question about this document?

www.cypress.com/support

Document reference

002-37419 Rev. **

IMPORTANT NOTICE

The information given in this document shall in no event be regarded as a guarantee of conditions or characteristics ("Beschaffenheitsgarantie").

With respect to any examples, hints or any typical values stated herein and/or any information regarding the application of the product, Infineon Technologies hereby disclaims any and all warranties and liabilities of any kind, including without limitation warranties of non-infringement of intellectual property rights of any third party.

In addition, any information given in this document is subject to customer's compliance with its obligations stated in this document and any applicable legal requirements, norms and standards concerning customer's products and any use of the product of Infineon Technologies in customer's applications.

The data contained in this document is exclusively intended for technically trained staff. It is the responsibility of customer's technical departments to evaluate the suitability of the product for the intended application and the completeness of the product information given in this document with respect to such application.

For further information on the product, technology, delivery terms and conditions and prices please contact your nearest Infineon Technologies office (www.infineon.com).

WARNINGS

Due to technical requirements products may contain dangerous substances. For information on the types in question please contact your nearest Infineon Technologies office.

Except as otherwise explicitly approved by Infineon Technologies in a written document signed by authorized representatives of Infineon Technologies, Infineon Technologies' products may not be used in any applications where a failure of the product or any consequences of the use thereof can reasonably be expected to result in personal injury.