

ModusToolbox™ Bluetooth® Configurator user guide

ModusToolbox™ tools package version 3.0.1

Bluetooth® Configurator version 2.70.0

About this document

Scope and purpose

The Bluetooth® Configurator settings include options to specify what services and profiles to use and what features to offer by creating the required databases in generated code.

Intended audience

This document helps application developers understand how to use the Bluetooth® Configurator as part of creating a ModusToolbox™ application.

Document conventions

Convention	Explanation
Bold	Emphasizes heading levels, column headings, menus and sub-menus
<i>Italics</i>	Denotes file names and paths.
<code>Courier New</code>	Denotes APIs, functions, interrupt handlers, events, data types, error handlers, file/folder names, directories, command line inputs, code snippets
File > New	Indicates that a cascading sub-menu opens when you select a menu item

Abbreviations and definitions

The following define the abbreviations and terms used in this document:

- Application – One or more projects related to each other.
- Configurator – A GUI-based tool used to configure a resource.
- GAP – generic access profile
- GATT – generic attribute profile
- L2CAP – logical link control and adaptation protocol
- LE – low energy
- MCU – microcontroller unit
- Resource – Includes peripherals, pins, clocks, etc. used in an application.
- SDK – software development kit
- SIG – special interest group

Reference documents

Refer to the following documents for more information as needed:

About this document

- [Eclipse IDE for ModusToolbox™ user guide](#)
- [Device Configurator user guide](#)
- [AIROC™ Bluetooth® SDK documentation](#)
- [PSoC™ 6 Bluetooth® Middleware API reference guide](#)
- Device datasheets
- Device technical reference manuals

Table of contents

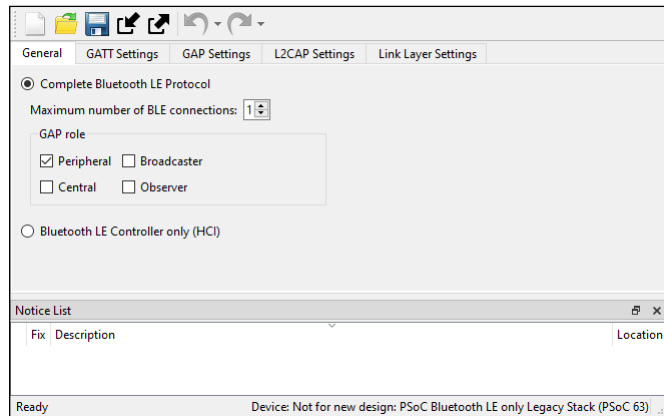
Table of contents

- 1 Overview..... 4**
- 1.1 Supported devices and libraries.....4
- 1.2 SIG-adopted profiles and services.....4
- 1.3 Custom profiles5
- 2 Launch the Bluetooth® Configurator..... 6**
- 2.1 make command6
- 2.2 Eclipse IDE6
- 2.3 Executable (GUI).....7
- 2.4 Executable (CLI).....8
- 3 Quick start..... 9**
- 4 Code generation.....10**
- 4.1 CYW20xxx.....10
- 4.2 CYW43xxx.....10
- 4.3 CYW55xxx.....10
- 4.4 PSoC™ Bluetooth® LE only Legacy Stack (PSoC™ 63)10
- 5 GUI description11**
- 5.1 Menus.....11
- 5.2 Toolbar12
- 5.3 Tab components12
- 5.4 Notice List.....12
- 5.5 Status bar13
- 6 Parameters configuration14**
- 6.1 General tab (CYW20xxx, CYW55xxx)14
- 6.2 General tab (PSoC™ Bluetooth® LE only Legacy Stack (PSoC™ 63)).....15
- 6.3 General LE tab (CYW43xxx, CYW55xxx)16
- 6.4 GATT Settings tab (all devices)17
- 6.5 GAP Settings tab (CYW43xxx, CYW55xxx, PSoC™ 63 with Legacy Stack)33
- 6.6 L2CAP Settings tab (CYW43xxx, CYW55xxx, PSoC™ Bluetooth® LE only Legacy Stack (PSoC™ 63)50
- 6.7 Link Layer Settings tab (PSoC™ Bluetooth® LE only Legacy Stack (PSoC™ 63))51
- 6.8 Service Discovery Settings tab (CYW20xxx, CYW55xxx) (Beta).....53
- 7 Version changes56**

Overview

1 Overview

The Bluetooth® Configurator is a stand-alone graphical tool included with the ModusToolbox™ software. This configurator helps generate code for Bluetooth® applications, including the generic attribute profile (GATT) database, service discovery protocol (SDP) database (provided at Beta-level support), generic access profile (GAP) configuration, logical link control and adaptation protocol (L2CAP), and link layer parameters.



1.1 Supported devices and libraries

The Bluetooth® Configurator supports various devices and libraries (also known as middleware), and the following table summarizes these options. The configurator generates different code for each of the supported devices.

Device Type	Library Name	Link	Short Name
CYW20706, CYW20719, CYW20721, CYW20735, CYW20819, CYW20820, CYW20835, CYW43012	AIROC™ Bluetooth® SDK (BTSTACK 1.0)	https://infineon.github.io/btsdk-docs/BT-SDK/index.html	CYW20xxx
CYW20829, PSoC™ 6 MCU with CYW43xxx Connectivity, PSoC™ 63	AIROC™ BTSTACK with Bluetooth® LE only (Updatable Stack)	https://github.com/infineon/Bluetooth-freertos https://github.com/infineon/btstack	CYW43xxx
CYW5557x	AIROC™ Bluetooth® SDK (BTSTACK 3.x)		CYW55xxx
PSoC™ 63	PSoC™ 63 Bluetooth® LE only Legacy Stack	https://github.com/Infineon/bless	PSoC™ 63

Note: Starting from version 2.70 (this document), the PSoC™ 63 Bluetooth® LE only Legacy Stack support is deprecated. New configurations for the PSoC™ 63 devices are based on AIROC™ BTSTACK with the Bluetooth® LE only library, similarly to the CYW20829 devices. But, you can still open, edit, and save the existing PSoC™ Bluetooth® LE only Legacy Stack (PSoC™ 63), configurations and perform code generation.

1.2 SIG-adopted profiles and services

The Bluetooth® Configurator supports numerous SIG-adopted profiles and services. Also, the Bluetooth® Configurator generates all the necessary code for a particular profile/service operation in accordance with its configuration.

Overview

1.3 Custom profiles

You can create custom Bluetooth® Low Energy (LE) Profiles that use existing services, and you can create custom services with custom characteristics and descriptors.

Launch the Bluetooth® Configurator

2 Launch the Bluetooth® Configurator

There are several ways to launch the Bluetooth® Configurator, and those ways depend on how you use the various tools in ModusToolbox™.

2.1 make command

As described in the [ModusToolbox™ tools package user guide](#) "Build system" chapter, you can run numerous make commands in the application directory, such as launching the Bluetooth® Configurator. After you have created a ModusToolbox™ application, navigate to the application directory and type the following command in the appropriate bash terminal window:

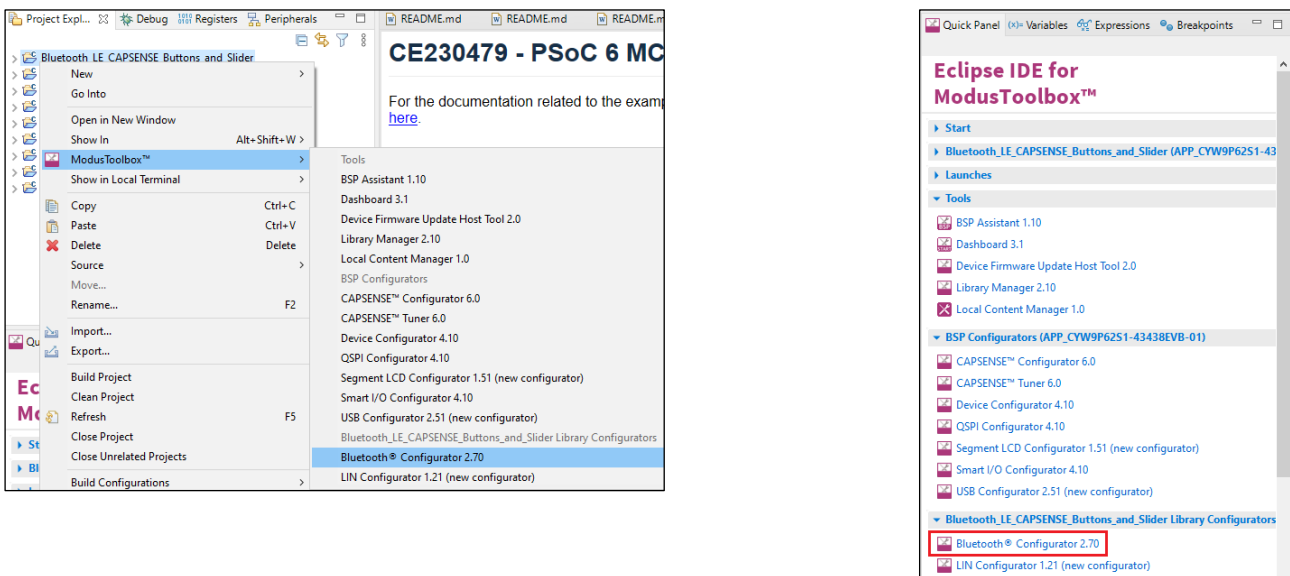
```
make bt-configurator
```

If the application has an existing Bluetooth® configuration (*.cybt) file, this command opens the Bluetooth® Configurator GUI for the specific application in which you are working.

If there is no *.cybt file, this command launches an empty Bluetooth® Configurator. You must [open an existing *.cybt file](#) or [create a new one](#) for the application in which you want to configure Bluetooth®.

2.2 Eclipse IDE

If you use the Eclipse IDE for ModusToolbox™, you can launch the Bluetooth® Configurator for the selected application.



If there is a *.cybt file in the application folder, you can launch the Bluetooth® Configurator GUI directly from the Eclipse IDE using any of the following methods:

- Double-click on the *.cybt file in the application.
- Right-click on the top-level application folder, and select **ModusToolbox™ > Bluetooth® Configurator**.
- Click on the **Bluetooth® Configurator** link in the IDE Quick Panel after selecting the appropriate project.

Refer to the [Eclipse IDE for ModusToolbox™ user guide](#) for more details.

If there is no *.cybt file in the application folder, the options from the menu and Quick Panel read **Bluetooth® Configurator (new configuration)**. Select either option, and the Bluetooth® Configurator GUI opens with the default configuration (*.cybt) that will be saved as a *design.cybt* file in the application folder.

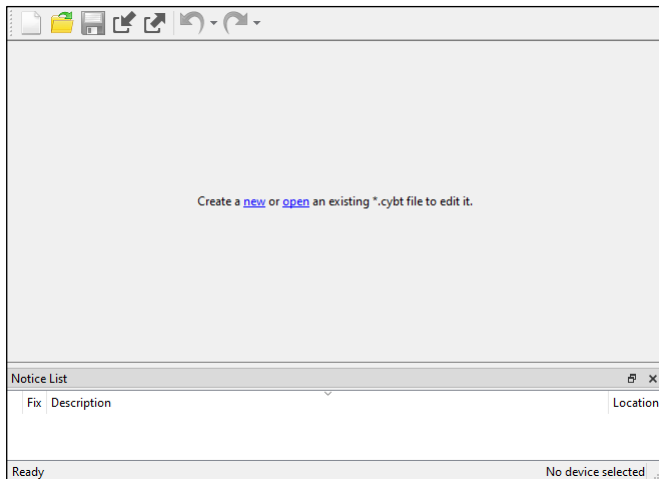
Launch the Bluetooth® Configurator

2.3 Executable (GUI)

If you don't have an application or if you just want to see what the configurator looks like, you can launch the Bluetooth® Configurator GUI by running its executable as appropriate for your operating system (for example, double-click it or select it using the Windows **Start** menu). By default, it is installed here:

```
<install_dir>/ModusToolbox/tools_<version>/bt-configurator<version>
```

When opened this way, the Bluetooth® Configurator GUI opens without any information.



You must open an existing *.cybt file or create a new one for the application in which you want to configure Bluetooth®.

2.3.1 Open an existing configuration file

To open an existing configuration file, select **File > Open** ([**Ctrl**]+[**O**]). In the Open Configuration File dialog, navigate to the appropriate directory, and select the desired configuration file (*.cybt).

2.3.2 Create a new configuration file

To create a new configuration file, select **File > New** ([**Ctrl**]+[**N**]). The Device dialog drop-down menu displays the following options:

- AIROC™ BTSDK [BTSTACK 1.0] (CYW20706, CYW20719, CYW20721, CYW20735, CYW20819, CYW20820, CYW20835, CYW43012)
- AIROC™ BTSTACK with Bluetooth® LE only (CYW20829, PSoC™ 63, PSoC™ 6 with CYW43xxx Connectivity device)
- AIROC™ BTSDK [BTSTACK 3.x] (CYW5557x)
- Not for new design: PSoC™ Bluetooth® LE only Legacy Stack (PSoC™ 63)

Note: Option "PSoC™ Bluetooth® LE only Legacy Stack (PSoC™ 63)" is not recommended for creating new configurations.

Various parameter configuration options depend on the selection, so select the device you want to generate code for.

Launch the Bluetooth® Configurator

2.4 Executable (CLI)

The Bluetooth® Configurator executable can be run from the command line, and it also has a "cli" version of the executable as well. Running configurator executables from the command line can be useful as part of batch files or shell scripts to re-generate the source code based on the latest configuration settings. The exit code for the executable is zero if the operation is successful, or non-zero if the operation encounters an error. For more information about the command-line options, run the executable using the `-h` option.

Quick start

3 Quick start

1. [Launch the Bluetooth® Configurator](#).
2. Use the Bluetooth® Configurator to configure the application (GATT, GAP, L2CAP, LL, SDP, etc.). Refer to the [Parameters configuration](#) section for more details.
3. Save the configuration file and generated source code.

Code generation

4 Code generation

The Bluetooth® Configurator generates code into a *GeneratedSource* directory in your Eclipse IDE application or into the specified location for non-Eclipse IDE applications. That directory contains the necessary source (.c) and header (.h) files for the generated firmware, which uses the relevant driver APIs to configure hardware. The user configuration is saved to the *.cybt file.

4.1 CYW20xxx

- *design.cybt* – Contains an XML representation of the configuration; you may specify any file name
- *cycfg_gatt_db.h* and *cycfg_gatt_db.c* – Contain the GATT database code., include *cycfg_gatt_db.h* in your application
- *cycfg_sdp_db.h* and *cycfg_sdp_db.c* – Contain the SDP database code, include *cycfg_sdp_db.h* in your application.

4.2 CYW43xxx

- *design.cybt* – Contains an XML representation of the configuration. You may specify any file name.
- *cycfg_gatt_db.h* and *cycfg_gatt_db.c* – Contain the GATT database code. Include *cycfg_gatt_db.h* in your application.
- *cycfg_gap.h* and *cycfg_gap.c* – Contain the GAP configuration code.
- *cycfg_bt_settings.h* and *cycfg_bt_settings.c* – Contain the *wiced_bt_cfg_settings_t* initialization structure. Two sets of structures are generated (using the #if directive): compatible with BTSTACK 2.X and BTSTACK 3.X. Include *cycfg_bt_settings.h* in your application.

4.3 CYW55xxx

- *design.cybt* – Contains an XML representation of the configuration. You may specify any file name.
- *cycfg_gatt_db.h* and *cycfg_gatt_db.c* – Contain the GATT database code. Include *cycfg_gatt_db.h* in your application.
- *cycfg_gap.h* and *cycfg_gap.c* – Contain the GAP configuration code.
- *cycfg_bt_settings.h* and *cycfg_bt_settings.c* – Contain the structures necessary to initialize *wiced_bt_cfg_settings_t* structure. The structure *wiced_bt_cfg_settings_t* itself is not generated. Include *cycfg_bt_settings.h* in your application.
- *cycfg_bt_settings.h* and *cycfg_bt_settings.c* – Contain the structures necessary to initialize the *wiced_bt_cfg_settings_t* structure, which consists of names starting with *cy_* prefix. Use either a complete generated *cy_bt_cfg_settings* structure or any of the generated inner structures to create customized configuration. Include *cycfg_bt_settings.h* in your application.
- *cycfg_sdp_db.h* and *cycfg_sdp_db.c* – Contain the SDP database code, include *cycfg_sdp_db.h* in your application.

4.4 PSoC™ Bluetooth® LE only Legacy Stack (PSoC™ 63)

- *design.cybt* – Contains an XML representation of the configuration. You may specify any file name.
- *cycfg_ble.h* and *cycfg_ble.c* – Contain the generated C code. Include the header file in your application. Use the generated structures as input parameters for the *Cy_BLE_Init()* function. Refer to the "Configuration Considerations" section in the *Bluetooth® Low Energy Middleware API reference guide* for more details about how to initialize and enable the Bluetooth® Middleware.

GUI description

5 GUI description

The Bluetooth® Configurator GUI contains [menus](#) and [tabs](#) to configure Bluetooth® settings, as well as Notice List and Status Bar to provide indications. The tabs are described under [Parameter Configuration](#).

5.1 Menus

5.1.1 File

- **New** – Creates a new configuration file.
- **Open...*** – Opens a specified <file_name>.cybt configuration file. The current file, if any, will be closed.
- **Close** – Closes the configuration file. If there are unsaved changes, a dialog opens asking to save or not.
- **Save** – Saves changes to the file. If the file does not exist, the Save file dialog opens. When saving, it also generates code files.
- **Save As...** – Saves changes to a new file location.
- **Open in System Explorer** – Opens your computer's file explorer tool to the folder that contains the *.modus file.
- **Import...** – Imports a specified configuration file.
- **Export...** – Exports the current configuration file into a specified file.
- **Recent files**** – Shows recent files that you can open directly.
- **Exit** – Closes the configurator.

Note: * – The menu item is locked when the application is launched from the ModusToolbox™ Eclipse IDE.

Note: ** – The menu item is not available when the application is launched from the ModusToolbox™ Eclipse IDE.

5.1.2 Edit

- **Undo** – Undoes the last action or sequence of actions.
- **Redo** – Redoes the last undone action or sequence of undone actions.

5.1.3 View

- **Notice List** – Hides or shows the Notice List pane. The pane is shown by default.
- **Toolbar** – Hides or shows the Toolbar.
- **Reset View** – Resets the view to the default.

5.1.4 Help

- **View Help** – Opens this document.
- **About Bluetooth® Configurator** – Opens the About box for version information, with links to open <https://www.infineon.com> and the current session log file.

GUI description

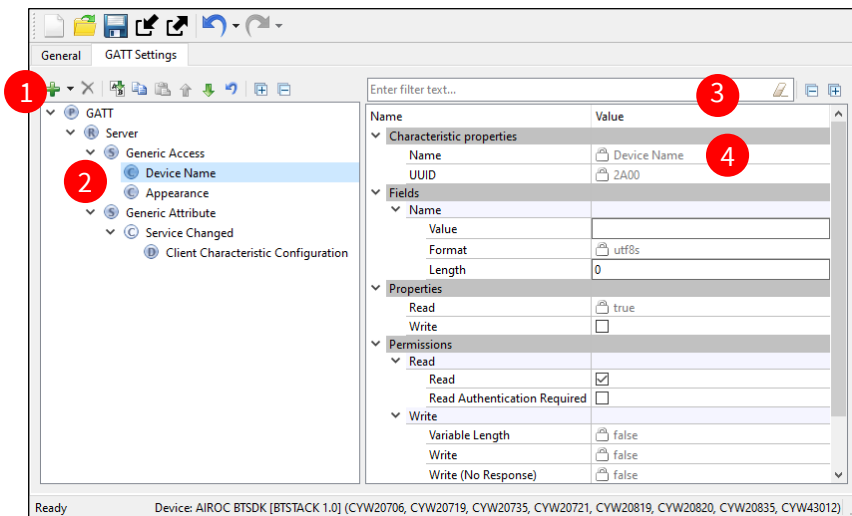
5.2 Toolbar



The toolbar contains common commands from the **File** and **Edit** menus, such as **New**, **Open**, **Save**, etc. Use the check box under the **View** menu to show or hide the toolbar.

5.3 Tab components

For the different devices, the GUI contains one or more tabs to update various settings. The following shows a typical tab and identifies the key components:



1. The tab toolbar used for commands for a given tab.
2. The configuration tree to add nodes and define parameters on a given node.
3. The toolbar to filter, expand, and collapse parameters.
4. Node configuration settings.

5.4 Notice List

The **Notice List** pane combines notices (errors, warnings, tasks, and notes) from many places in the configuration into a centralized list. If a notice shows a location, you can double-click the entry to show the error or warning.

Fix	Description	Location
	GAP Advertisement Settings -> Enable Slow advertising timeout: In the Limited discovery mode the advertising timeout must be present.	GAP Settings
	When the number of connections is 1, the Peripheral and Central GAP roles can't be selected simultaneously.	General
	Battery Level characteristic value contains an error.	GATT Settings

The **Notice List** pane contains the following columns:

- **Icon** – Displays the icons for the error, warning, task, or note.
- **Fix** – This may display a wrench icon that can be used to automatically address the required notice.
- **Description** – Displays a brief description of the notice.

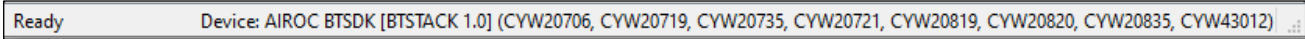
GUI description

- **Location** – Displays the specific tab of the message, when applicable.

For more information about the Notice List, refer to the [Device Configurator user guide](#).

5.5 Status bar

The **Status Bar** displays various information, including a file operation status, hints, input field ranges, etc. On the right side, it displays the selected device.



Parameters configuration

6 Parameters configuration

The Bluetooth® Configurator contains several tabs in which to configure parameters. The set of active tabs depends on the selected device and other parameter values.

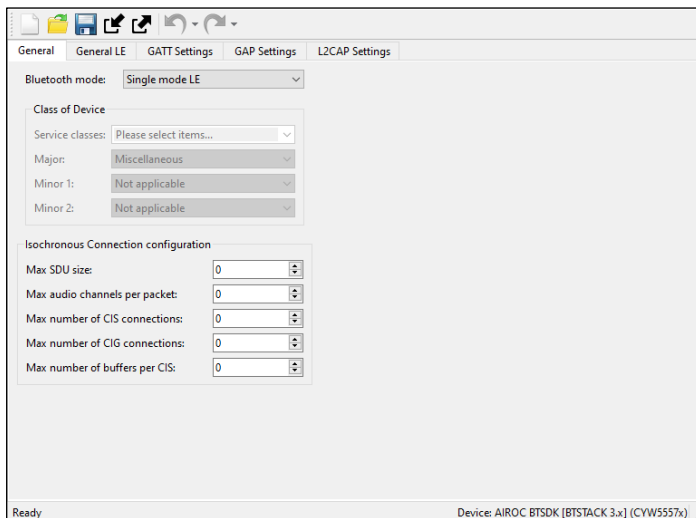
6.1 General tab (CYW20xxx, CYW55xxx)

The **General** tab allows general configuration of the Bluetooth® resource.

For **CYW20xxx**, the tab displays as follows, depending on the mode selected:



For **CYW55xxx**, the tab displays as follows, depending on the mode selected:



The **General** tab contains the following settings:

6.1.1 Bluetooth® mode

The **Bluetooth® mode** parameter supports the following functionality in different modes:

- **Single mode LE** – Only the Low Energy.
- **Single mode BR/EDR** – Only the Basic Rate (**BR**)/Enhanced Data Rate (**EDR**) or "classic" Bluetooth®.
- **Dual mode** – Both the Low Energy and BR/EDR.

Parameters configuration

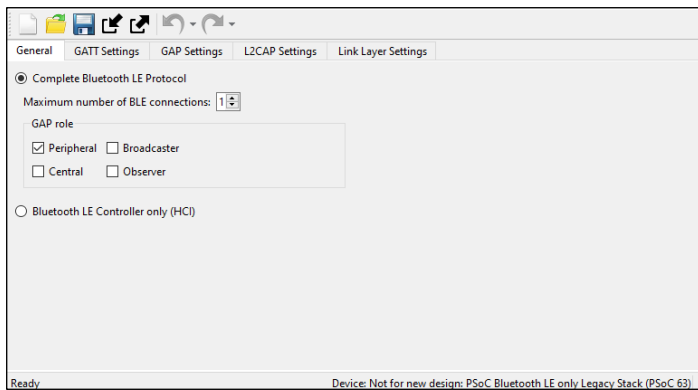
6.1.2 Class of device

The **Class of Device** parameters group is available in **Single mode BR/EDR** or **Dual mode**. It indicates the device type and includes the following parameters:

- **Service classes** – Defines the general categories of devices your application will be associated with.
- **Major** – Major device class. Defines the main device’s function.
- **Minor 1** – Minor device class. Extends the Major device class value.
- **Minor 2** – Additional minor device class. Extends the Major device class value.

6.2 General tab (PSoC™ Bluetooth® LE only Legacy Stack (PSoC™ 63))

The **General** tab for **PSoC™ Bluetooth® LE only Legacy Stack (PSoC™ 63)** allows general configuration of the Bluetooth® resource. The tab displays as follows, depending on the mode selected.



The **General** tab settings for **PSoC™ Bluetooth® LE only Legacy Stack (PSoC™ 63)**:

6.2.1 Complete Bluetooth LE Protocol

The **Complete Bluetooth LE Protocol** mode enables both Bluetooth® Host and Controller. All GAP roles are exposed for configuration.

6.2.1.1 Maximum number of Bluetooth® LE connections

This parameter displays how many Bluetooth® LE connections (both Central and Peripheral) are allowed. The valid range is 1 - 4.

6.2.1.2 GAP role

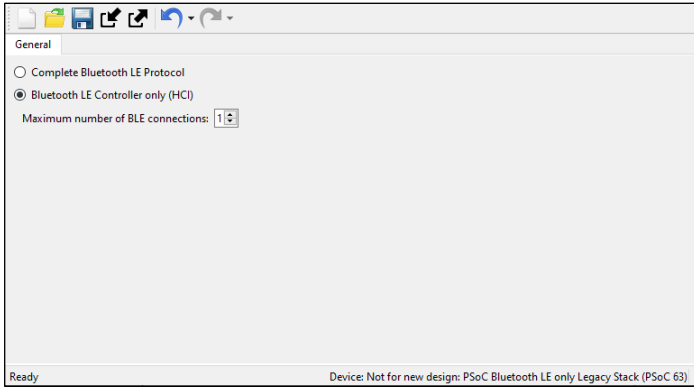
The **GAP role** parameter can take the following values:

- **Peripheral** – Defines the device to advertise using connectable advertising packets in order to establish connection. Peripheral devices need a Central device, because the Central device initiates connection. A Peripheral device can broadcast general information about the device through the advertisement data.
- **Central** – Defines the device to initiate connection. Peripheral devices need a Central device, because the Central device initiates connection.
- **Broadcaster** – Defines the device to send advertising data – similar to the Peripheral role. However, the Broadcaster does not support connection, it sends data but does not receive it.
- **Observer** – Defines the device to scan for a Broadcaster and reports the received information to an application. The Observer role does not allow transmission.

Parameters configuration

6.2.2 Bluetooth LE Controller only (HCI)

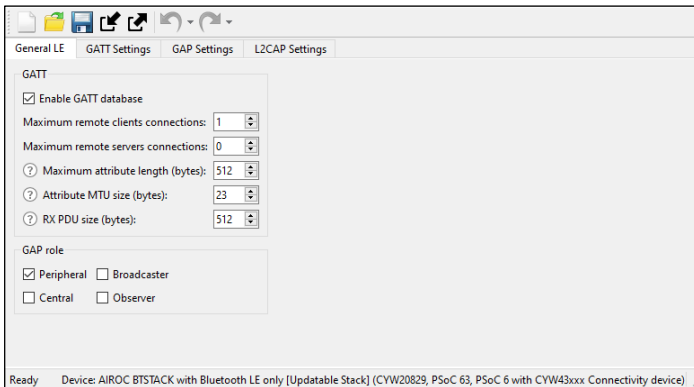
HCI mode enables the use of the device as **Bluetooth LE Controller**. Selecting this mode makes all other tabs unavailable.



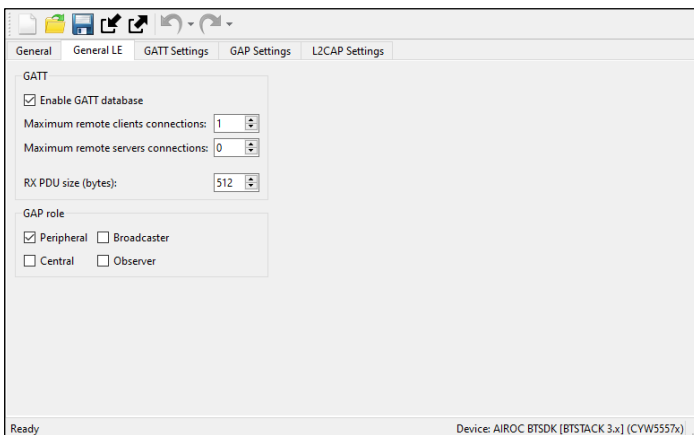
6.3 General LE tab (CYW43xxx, CYW55xxx)

The **General LE** tab allows general configuration of the Bluetooth® resource.

For **CYW43xxx** the tab displays as follows:



For **CYW55xxx**, the tab displays as follows:



Parameters configuration

The **General LE** tab settings:

6.3.1 Enable GATT database

This parameter enables the GATT database. When not enabled, the **GATT Settings** tab hides and files `cycfg_gatt_db.h` and `cycfg_gatt_db.c` are not generated.

6.3.2 Maximum remote clients connections

This parameter displays the maximum number of clients that a local server can connect to.

6.3.3 Maximum remote servers connections

This parameter displays the maximum number of servers that a local client can connect to.

6.3.4 Maximum attribute length

This value is the maximum length of an attribute in the design. The valid range is 23 - 512 bytes.

Note: This parameter is not used in BTSTACK 3.0 or above.

6.3.5 Attribute MTU size

This value is the Maximum Transmission Unit size (bytes) of an attribute in the design. The valid range is 23 - 517 bytes. This value is used to respond to an Exchange MTU request from the GATT Client.

Note: This parameter is not used in BTSTACK 3.0 or above.

6.3.6 RX PDU size

This value is the maximum size allowed for any received L2CAP PDU. The valid range is 65 - 65535 bytes.

Note: This parameter is used in BTSTACK 3.0 or above.

6.3.7 GAP role

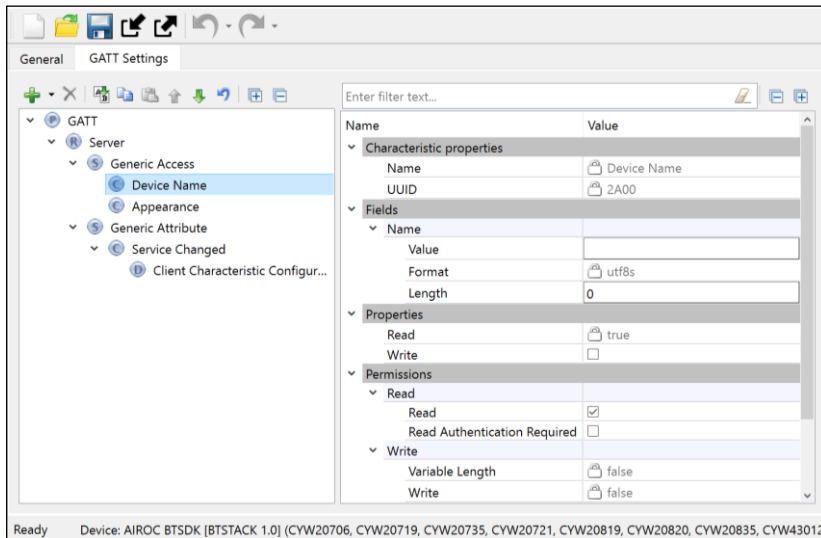
See [GAP Role](#).

6.4 GATT Settings tab (all devices)

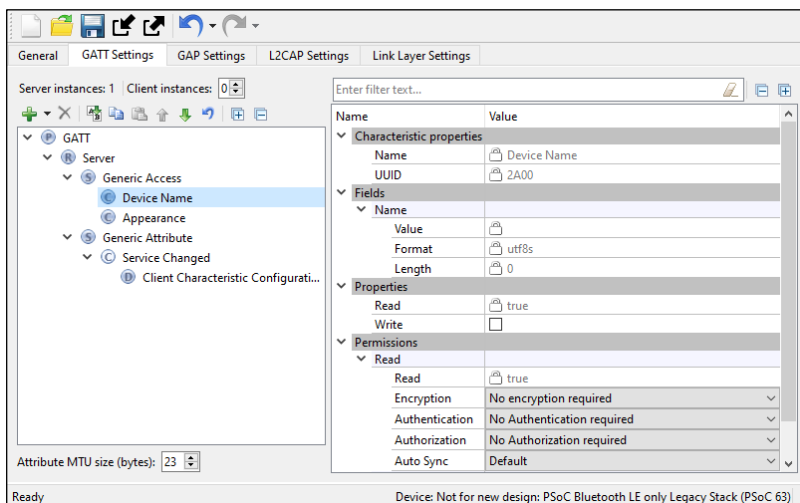
The **GATT Settings** tab is used to configure Profile-specific parameters. The **GATT Settings** tab has three areas: toolbars, a **Profiles** tree, and Parameters configuration pane. Depending on the selected device, some parameters may be unavailable.

Parameters configuration

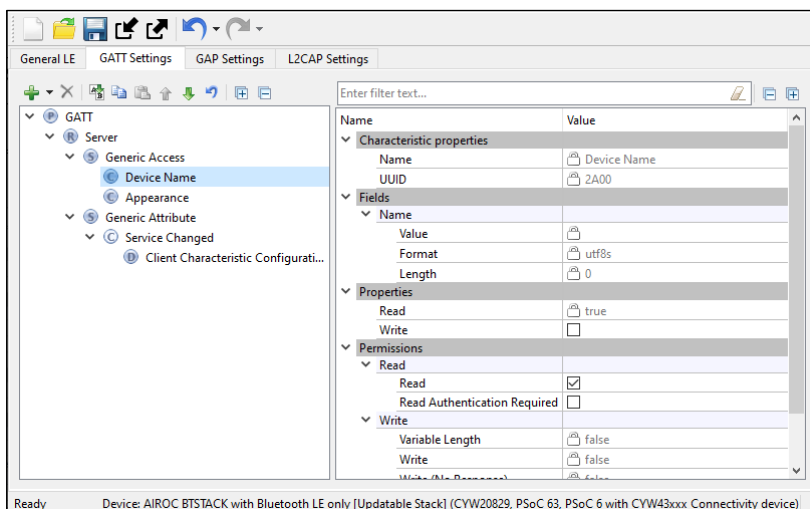
For **CYW20xxx**, the tab displays as follows:



For **PSoC™ Bluetooth® LE only Legacy Stack (PSoC™ 63)**, the tab displays as follows:



For **CYW43xxx and CYW55xxx**, the tab displays as follows:



Parameters configuration

6.4.1 Toolbars

The toolbars contain navigation options and various commands to add or delete Services, Characteristics, and Descriptors.

- **Server instances (PSoC™ Bluetooth® LE only Legacy Stack (PSoC™ 63))** – The number of GATT Server instances. The Bluetooth® resource supports a single instance of a GATT Server (single GATT database). You can add additional Services or complete Profiles to the existing Server Profiles tree to build the GATT database. This single GATT database will be re-used across all Bluetooth® Low Energy connections.

Note: The CCCD values for each of active connections will be unique.






- **Client instances (PSoC™ Bluetooth® LE only Legacy Stack (PSoC™ 63))** – The number of GATT Client instances. One GATT Client instance exists per connection. You can configure up to four GATT Client instances. All GATT Client instances have one common Client Profiles tree configuration.
- **Add Profile** – Available when the GATT node is highlighted in the Profile tree. It allows adding a whole Profile to the Profiles tree. This option does not remove existing Services from the tree. Several Profiles can exist in the tree simultaneously.
- **Add Service** – Available when the Profile Role is highlighted in the Profile tree. Allows loading of Services in the selected Profile Role. In the GATT server configuration, adds the selected service data to the server GATT database and enables service-specific APIs.
- For **PSoC™ Bluetooth® LE only Legacy Stack (PSoC™ 63)** devices, in the GATT client configuration, the data structures for auto discovery of this service are created. If services not populated in the GUI are discovered during auto discovery, this option ignores those services and the application is responsible for discovering the details of such services. Refer to the [Profiles](#) section for the available Services.
- **Add Characteristic** – Available when a service is highlighted in the Profile tree. The Characteristic options are unique to each Service and are loaded automatically when a service is added to the design. The Add Characteristic button can be used to manually add a new characteristic to the service. All characteristics for the above-mentioned services plus Custom Characteristic are available for selection.
- **Add Descriptor** – Available when a characteristic is highlighted in the Profile tree. Similar to the Characteristic options, the Descriptor options are unique to a characteristic and are all automatically loaded when a characteristic is added to the design.
- **Delete** – Deletes the selected Service, Characteristic, or Descriptor.
- **Rename** – Renames the selected item in the Profiles tree.
- **Copy/Paste** – Copies/pastes items in the Profiles tree.
- **Move Up/Down** – Moves the selected item up or down in the Profiles tree.
- **Reset branch to default** – Resets the selected item with child items in the Profiles tree to the default.
- **Expand All** – Expands all items in the Profiles tree.
- **Collapse all Services** – Collapses all Services in the Profiles tree.

6.4.2 Profiles tree





The **Profiles** tree is used to view GATT Services, Characteristics, and Descriptors of the GATT Server and Client roles (GATT Client role is supported for **PSoC™ Bluetooth® LE only Legacy Stack (PSoC™ 63)**). By navigating through the tree, you can quickly add, delete, or modify Services, Characteristics, and Descriptors using the toolbar buttons or the context menu. You can configure the parameters by clicking an item on the tree. These parameters will show in the [Parameters configuration](#) section.

Parameters configuration

The tree may contain the following nodes:

-  Profile
-  Profile Role
-  Service
-  Characteristic
-  Descriptor

In addition, nodes may include colors and icons as follows:

-  Shaded icon – The node is mandatory.
-  White icon – The node is optional.
-  A '+' sign – The Service includes other Services.
-  Error icon – The node parameters have errors.

6.4.3 Parameters configuration

The Parameters configuration section allows you to configure a Profile, Service, or Characteristic by selecting the type of a Service or Characteristic in the tree. The filter box above the list of parameters allows limiting the items shown in the pane.

6.4.3.1 Attribute MTU size

(Applicable for **PSoC™ Bluetooth® LE only Legacy Stack (PSoC™ 63)**) The Maximum Transmission Unit size (bytes) of an attribute to be used in the design. The valid range is 23 – 512 bytes. This value is used to respond to an Exchange MTU request from the GATT Client.

6.4.4 Profiles

You can add a whole profile to the Profiles tree from a list of supported profiles.

Note: All Profiles must have a Generic Access Service and a Generic Attribute Service.

Note: For **CYW20xxx**, **CYW43xxx**, and **CYW55xxx** devices, only the GATT Server role is configurable.

Note: The Service Characteristics are configurable only if they belong to a GATT Server node.

Note: The security settings located in the **GAP Settings** tab are applied globally. Also, you may manually configure the security of each Characteristic/Descriptor.

The following profiles are available for selection:

6.4.4.1 Alert Notification

This profile enables a GATT Client device to receive different types of alerts and event information, as well as information on the count of new alerts and unread items, which exist in the GATT Server device.

- Alert Notification Server Profile role – Specified as a GATT Server. Requires the following Service: Alert Notification Service.
- Alert Notification Client Profile role – Specified as a GATT Client.

Parameters configuration

Refer to the [Alert Notification Profile Specification](#) for detailed information about the Alert Notification Profile.

6.4.4.2 Automation IO

This profile enables a device to connect and interact with an Automation IO Module (IOM) in order to access digital and analog signals.

- Automation IO Server Profile role – Specified as a GATT Server. Requires the following Service: Automation IO Service.
- Automation IO Client Profile role – Specified as a GATT Client.

Refer to the [Automation IO Profile Specification](#) for detailed information about the Automation IO Profile.

6.4.4.3 Blood Pressure

This profile enables a device to connect and interact with a Blood Pressure Sensor device for use in consumer and professional health care applications.

- Blood Pressure Sensor Profile role – Specified as a GATT Server. Requires the following Services: Blood Pressure Service, Device Information Service.
- Blood Pressure Collector Profile role – Specified as a GATT Client. Requires support of the following Services: Blood Pressure Service. Support of Device Information Service is optional.

Refer to [Blood Pressure Profile Specification](#) for detailed information about the Blood Pressure Profile.

6.4.4.4 Continuous Glucose Monitoring

This profile enables a device to connect and interact with a Continuous Glucose Monitoring Sensor device for use in consumer healthcare applications.

- Continuous Glucose Monitoring Sensor Profile role – Specified as a GATT Server. Requires the following Services: Continuous Glucose Monitoring Service, Device Information Service. Optionally may include Bond Management Service.
- Collector Profile role – Specified as a GATT Client. Requires support of the following Services: Continuous Glucose Monitoring Service. Support of Bond Management Service and Device Information Service is optional.

Refer to [Continuous Glucose Monitoring Profile Specification](#) for detailed information about the Continuous Glucose Monitoring Profile.

6.4.4.5 Cycling Power

This profile enables a Collector device to connect and interact with a Cycling Power Sensor for use in sports and fitness applications.

- Cycling Power Sensor Profile role – Specified as a GATT Server. Requires the following Service: Cycling Power Service. Optionally may include Device Information Service and Battery Service.
- Cycling Power Sensor and Broadcaster Profile role. Requires the following Service: Cycling Power Service.
- Collector Profile role – Specified as a GATT Client. Requires support of the following Service: Cycling Power Service. Support of Device Information Service and Battery Service is optional.

Refer to [Cycling Power Profile Specification](#) for detailed information about the Cycling Power Profile.

Parameters configuration

6.4.4.6 Cycling Speed and Cadence

This profile enables a Collector device to connect and interact with a Cycling Speed and Cadence Sensor for use in sports and fitness applications.

- Cycling Speed and Cadence Sensor Profile role – Specified as a GATT Server. Requires the following Service: Cycling Speed and Cadence Service. Optionally may include Device Information Service.
- Collector Profile role – Specified as a GATT Client. Requires support of the following Service: Cycling Speed and Cadence Service. Support of Device Information Service is optional.

Refer to [Cycling Speed and Cadence Profile Specification](#) for detailed information about the Cycling Speed and Cadence Profile.

6.4.4.7 Environmental Sensing Profile

This profile enables a Collector device to connect and interact with an Environmental Sensor for use in outdoor activity applications.

- Environmental Sensor Profile role – Specified as a GATT Server. Requires the following Service: Environmental Sensing Service. Optionally may include Device Information Service and Battery Service.
- Collector Profile role – Specified as a GATT Client. Requires support of the following Service: Environmental Sensing Service. Support of Device Information Service and Battery Service is optional.

Refer to [Environmental Sensing Profile Specification](#) for detailed information about the Environmental Sensing Profile.

6.4.4.8 Find Me

This profile defines the behavior when a button is pressed on one device to cause an alerting signal on a peer device.

- Find Me Target Profile role – Specified as a GATT Server. Requires the following Service: Immediate Alert Service.
- Find Me Locator Profile role – Specified as a GATT Client. Requires support of the following Service: Immediate Alert Service.

Refer to [Find Me Profile Specification](#) for detailed information about the Find Me Profile.

6.4.4.9 Glucose

This profile enables a device to connect and interact with a Glucose Sensor for use in consumer healthcare applications.

- Glucose Sensor Profile role – Specified as a GATT Server. Requires the following Services: Glucose Service, Device Information Service.
- Collector Profile role – Specified as a GATT Client. Requires support of the following Service: Glucose Service. Support of Device Information Service is optional.

Refer to [Glucose Profile Specification](#) for detailed information about the Glucose Profile.

Parameters configuration

6.4.4.10 Health Thermometer

This profile enables a Collector device to connect and interact with a Thermometer sensor in healthcare applications.

- Thermometer Profile role – Specified as a GATT Server. Requires the following Services: Health Thermometer Service, Device Information Service.
- Collector Profile role – Specified as a GATT Client. Requires support of the following Service: Health Thermometer Service. Support of Device Information Service is optional.

Refer to [Health Thermometer Profile Specification](#) for detailed information about the Health Thermometer Profile.

6.4.4.11 HTTP Proxy

This service allows a Client device, typically a sensor, to communicate with a Web Server through a gateway device. HTTP Proxy Service is not available in the **Add Profile** drop-down list. It can be added as a separate Service.

Refer to [HTTP Proxy Service Specification](#) for detailed information about the HTTP Proxy Service.

6.4.4.12 Heart Rate

This profile enables a Collector device to connect and interact with a Heart Rate Sensor for use in fitness applications.

- Heart Rate Sensor Profile role – Specified as a GATT Server. Requires the following Services: Heart Rate Service, Device Information Service.
- Collector Profile role – Specified as a GATT Client. Requires support of the Heart Rate Service. Support of Device Information Service is optional.

Refer to [Heart Rate Profile Specification](#) for detailed information about the Heart Rate Profile.

6.4.4.13 HID over GATT

This profile defines how a device with Bluetooth® LE wireless communications can support HID Services over the Bluetooth® LE protocol stack using the Generic Attribute Profile.

- HID Device Profile role – Specified as a GATT Server. Requires the following Services: HID Service, Battery Service, and Device Information Service. Optionally may include Scan Parameters Service as part of the Scan Server role of the Scan Parameters Profile. HID Device supports multiple instances of HID Service and Battery Service and may include any other optional Services.
- Boot Host Profile role – Specified as a GATT Client. Requires support of the following Service: HID Service. Support of Battery Service and Device Information Service is optional.
- Report Host Profile role – Specified as a GATT Client. Requires support of the following Services: HID Service, Battery Service, Device Information Service. Support of Scan Client role of the Scan Parameters is optional.
- Report and Boot Host Profile role – Specified as a GATT Client. Requires support of the following Services: HID Service, Battery Service, Device Information Service. Support of Scan Client role of the Scan Parameters is optional.

Refer to [HID over GATT Profile Specification](#) for detailed information about the HID over GATT Profile.

Parameters configuration

6.4.4.14 Indoor Positioning

This service exposes location information to support mobile devices to position themselves in an environment where GNSS signals are not available. For example, on indoor premises. The location information is mainly exposed via advertising and the GATT-based service is primarily intended for configuration.

The Indoor Positioning Service is not available in the Profile drop-down list. It can be added as a separate Service.

Refer to [Indoor Positioning Service Specification](#) for detailed information about the Indoor Positioning Service.

6.4.4.15 Internet Protocol Support

This profile provides the support of exchanging Ipv6 packets between devices over the Bluetooth® Low Energy transport. The IPSP defines two roles – Node role and Router role. A device may support both Node role and Router role. A device supporting the Node role can be a sensor or actuator. A device supporting the Router role can be an Access Point (such as home router, mobile phone, or similar).

- Node Profile role – Specified as a GATT Server. Requires the following Service: Internet Protocol Support Service.
- Router Profile role – Specified as a GATT Client. Requires support of the following Services: Internet Protocol Support Service.

Refer to [Internet Protocol Support Profile Specification](#) for detailed information about IPSP.

6.4.4.16 Location and Navigation

This profile enables devices to communicate with a Location and Navigation Sensor for use in outdoor activity applications.

- Location and Navigation Sensor Profile role – Specified as a GATT Server. Requires the following Service: Location and Navigation Service. Optionally may include Device Information Service and Battery Service.
- Collector Profile role – Specified as a GATT Client. Requires support of the following Services: Location and Navigation Service. Support of Device Information Service and Battery Service is optional.

Refer to [Location and Navigation Profile Specification](#) for detailed information about the Location and Navigation Profile.

6.4.4.17 Phone Alert Status

This profile enables a device to alert its user about the alert status of a phone connected to the device.

- Phone Alert Server Profile role – Specified as a GATT Server. Requires the following Services: Phone Alert Status Service.
- Phone Alert Client Profile role – Specified as a GATT Client. Requires support of the following Service: Phone Alert Service.

Refer to [Phone Alert Status Profile Specification](#) for detailed information about the Phone Alert Status Profile.

Parameters configuration

6.4.4.18 Proximity

This profile enables the proximity monitoring between two devices.

- Proximity Reporter Profile role – Specified as a GATT Server. Requires the following Service: Link Loss Service. Optionally may include Immediate Alert Service and TX Power Service if both are used. Using only one of the optional Services is not allowed.
- Proximity Monitor Profile role – Specified as a GATT Client. Requires support of the following Services: Link Loss Service. Support of Immediate Alert Service and TX Power Service is optional. Same restrictions apply as to Proximity Reporter.

Refer to [Proximity Profile Specification](#) for detailed information about the Proximity Profile.

6.4.4.19 Pulse Oximeter

This profile enables a device to connect and interact with a Pulse Oximeter device for use in consumer and professional health care applications.

- Pulse Oximeter Sensor Profile role – Specified as a GATT Server. Requires the following Services: Pulse Oximeter Service, Device Information Service. Optionally may include Bond Management Service, Current Time Service and Battery Service.
- Collector Profile role – Specified as a GATT Client. Requires support of the following Services: Pulse Oximeter and Device Information Service. Support of Bond Management Service, Current Time Service and Battery Service are optional.

Refer to [Pulse Oximeter Profile Specification](#) for detailed information about the Pulse Oximeter Profile.

6.4.4.20 Running Speed and Cadence

This profile enables a Collector device to connect and interact with a Running Speed and Cadence Sensor for use in sports and fitness applications.

- Running Speed and Cadence Sensor Profile role – Specified as a GATT Server. Requires the following Service: Running Speed and Cadence Service. Optionally may include Device Information Service.
- Collector Profile role – Specified as a GATT Client. Requires support of the following Services: Running Speed and Cadence Service. Support of Device Information Service is optional.

Refer to [Running Speed and Cadence Profile Specification](#) for detailed information about the Running Speed and Cadence Profile.

6.4.4.21 Scan parameters

This profile defines how a Scan Client device with Bluetooth® LE wireless communications can write its scanning behavior to a Scan Server, and how a Scan Server can request updates of the Scan Client scanning behavior.

- Scan Server Profile role – Specified as a GATT Server. Requires the following Service: Scan Parameters Service.
- Scan Client Profile role – Specified as a GATT Client. Required support of the following Service: Scan Parameters Service.

Refer to [Scan Parameters Profile Specification](#) for detailed information about the Scan Parameters Profile.

Parameters configuration

6.4.4.22 Time

This profile enables the device to get the date, time, time zone, and DST information and control the functions related to time.

- Time Server Profile role – Specified as a GATT Server. Requires the following Service: Current Time Service. Optionally may include Next DST Change Service and Reference Time Update Service.
- Time Client Profile role – Specified as a GATT Client. Requires support of the following Service: Current Time Service. Support of Next DST Change Service and Reference Time Update Service is optional.

Refer to [Time Profile Specification](#) for detailed information about the Time Profile.

6.4.4.23 Weight Scale

This profile is used to enable a data collection device to obtain data from a Weight Scale that exposes the Weight Scale Service.

- Weight Scale Profile role – Specified as a GATT Server.
- Requires the following Services: Weight Scale Service and Device Information Service.
- Optionally may include: User Data Service, Body Composition Service, Battery Service and Current Time Service.
- Collector Profile role – Specified as a GATT Client.
- Required support of the following Service: Weight Scale Service and Device Information Service.
- Support of User Data Service, Body Composition Service, Battery Service and Current Time Service is optional.

Refer to [Weight Scale Profile Specification](#) for detailed information about the Weight Scale Profile.

6.4.4.24 Wireless Power Transfer (A4WP)

Enables the communication between Power Receiver Unit and Power Transmitter Unit in Wireless Power Transfer systems.

- Power Receiver Unit Profile role – Specified as a GATT Server. Requires the following Service: Wireless Power Transfer.
- Power Transmitter Unit Profile role – Specified as a GATT Client. Requires support of the following Service: Wireless Power Transfer.

Wireless Power Transfer Profile is a custom service defined by the Alliance for Wireless Power (A4WP). Refer to the [AirFuel Alliance](#) web site for detailed information about the Wireless Power Transfer Profile.

6.4.4.25 Bootloader profile

(PSoC™ Bluetooth® LE only Legacy Stack (PSoC™ 63)) The Bluetooth® Configurator supports the Bootloader Profile and Bootloader Service, which allow a Bootloader to update the existing firmware on the Bluetooth® Low Energy device. The Bootloader Service uses the Bluetooth® Low Energy interface as a communication interface. It can be added to any of the profiles if the design requires updating the firmware Over-the-Air (OTA).

Refer to the [Bootloader service configuration](#) section for detailed information about the Bootloader Service.

Parameters configuration

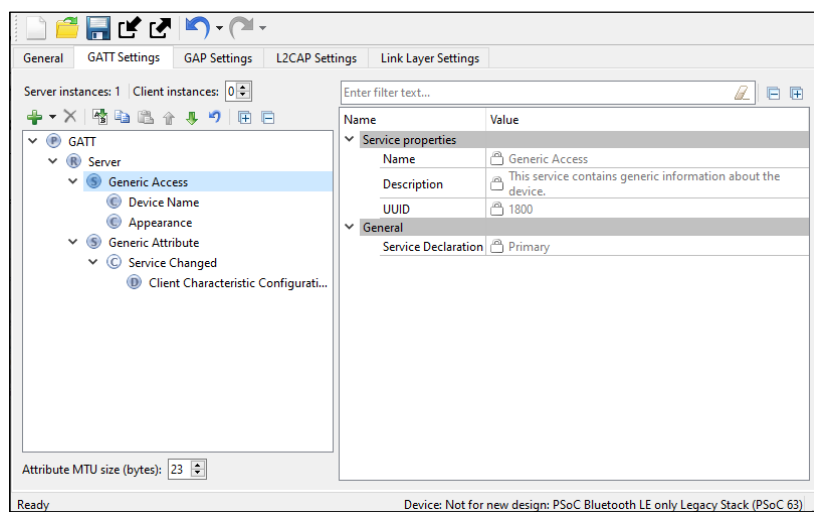
6.4.4.26 OTA Upgrade and OTA Secure Upgrade services

(CYW20xxx devices only) The Bluetooth® resource provides the firmware upgrade feature. It supports secure and non-secure versions of the upgrade. The OTA Upgrade Service supports the non-secure upgrade, and the OTA Secure Upgrade Service supports the secure upgrade. They can be added to any of the profiles if the design requires updating the firmware OTA.

Refer to the [AIROC™ Firmware Upgrade Library](#) documentation for detailed information about the OTA Upgrade and OTA Secure Upgrade Services.

6.4.5 Generic Access service

The **Generic Access Service** is used to define the basic Bluetooth® connection and discovery parameters. Click on the Characteristic under the Generic Access Service to view those particular Characteristic settings.



When the **GAP Settings** tab is available, you perform the actual Characteristics configuration in the General options located in it.

- **Device Name** – This is the name of your device. It has a Read (without authentication/authorization) property associated with it by default. This parameter can be up to 248 bytes. For **CYW55xxx**, **CYW43xxx**, and **PSoC™ Bluetooth® LE only Legacy Stack (PSoC™ 63)**, the value comes from the Device Name field on the **GAP Settings** tab, under **General**.
- **Appearance** – The device's logo or appearance, which is a SIG defined 2-byte value. It has a Read (without authentication/authorization) property associated with it by default. For **CYW55xxx**, **CYW43xxx**, and **PSoC™ Bluetooth® LE only Legacy Stack (PSoC™ 63)**, the value comes from the Appearance field on the **GAP Settings** tab, under **General**.
- **Peripheral Preferred Connection** – A device in the peripheral role can convey its preferred connection parameter to the peer device. This parameter is 8 bytes in total and is composed of the following sub-parameters.

Note: This parameter is available only when the device supports a Peripheral role. Refer to the [GAP Settings Tab – Connection parameters](#) section for more information.

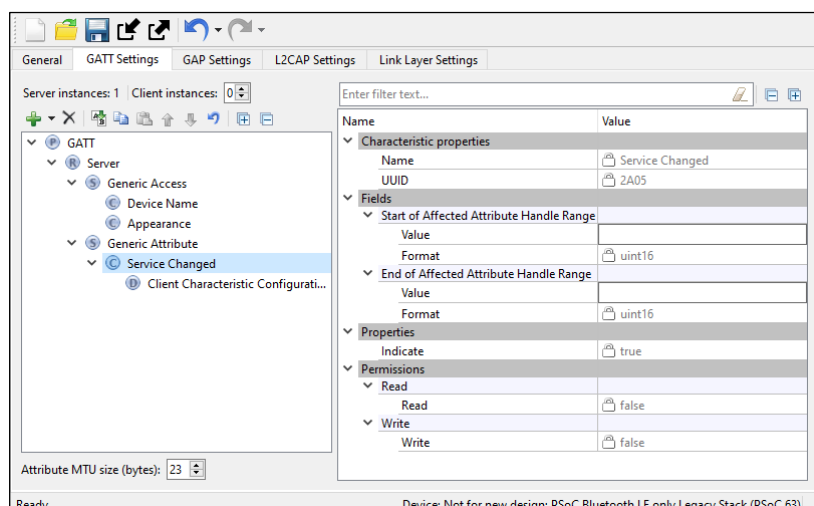
Note: **Minimum Connection Interval** – A 2-byte parameter that denotes the minimum permissible connection time.

Parameters configuration

- Note:** *Maximum Connection Interval – A 2-byte parameter that denotes the maximum permissible connection time.*
- Note:** *Peripheral Latency – A 2-byte value that defines the latency between consecutive connection events.*
- Note:** *Connection Supervision Timeout – A 2-byte value that denotes the LE link supervision timeout interval. Defines the timeout duration for which an LE link needs to be sustained if there is no response from the peer device over the LE link.*
- Note:** *For proper operation, the Connection Supervision Timeout must be larger than (1 + Peripheral latency) * Connection Interval * 2 (ms). Refer to Bluetooth® Core Specification Volume 6, Part B, Chapter 4.5.2 for more information on Connection Supervision Timeout.*
- Note:** *The above parameters are used for the connection parameters update procedure over L2CAP if a GAP central device does not use the peripheral preferred connection parameters. For example, iOS7 ignores peripheral preferred connection parameter Characteristics and establishes a connection with a default 30 ms connection interval. The peripheral device requests a connection parameter update by sending an L2CAP connection parameter update request at an appropriate time.*
- Note:** *A typical peripheral implementation initiates the L2CAP connection parameter update procedure once any Characteristic is configured for periodic notification or indication.*
- **Central Address Resolution** – A device in the central role can convey whether it supports privacy with address resolution. The Peripheral checks if the peer device supports address resolution by reading the **Central Address Resolution** characteristic before using directed advertisement where the initiator address is set to a Resolvable Private Address (RPA).
 - **Resolvable Private Address Only** – Defines whether the device will use only Resolvable Private Addresses (RPAs) as local addresses.

6.4.6 Generic Attribute service

By default, the Generic Attribute Service does not have any Characteristics.

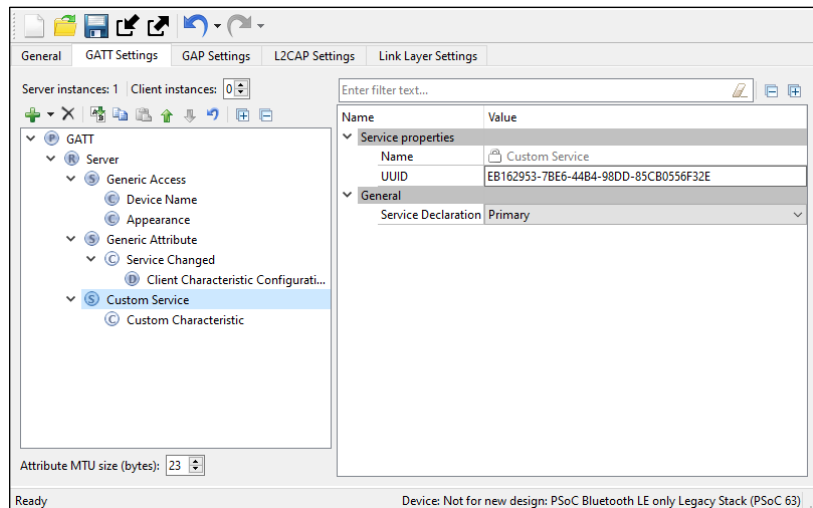


Parameters configuration

Add the optional **Service Changed** characteristic under the **Generic Attribute Service** if needed.

- Service Changed** – This Characteristic is used to indicate to the connected devices that a Service has changed (i.e., added, removed, or modified). It is used to indicate to GATT Clients that have a trusted relationship (i.e., bond) with the GATT Server when GATT-based Services have changed when they re-connect to the GATT Server. It is mandatory for the device in the GATT Client role. For the device in the GATT Server role, the Characteristic is mandatory if the GATT Server changes the supported Services in the device.

6.4.7 Custom Service configuration



6.4.7.1 UUID

A universally unique identifier of the service. This field is editable for Custom Services. By default, it is initialized with a random 128-bit UUID.

6.4.7.2 Service type

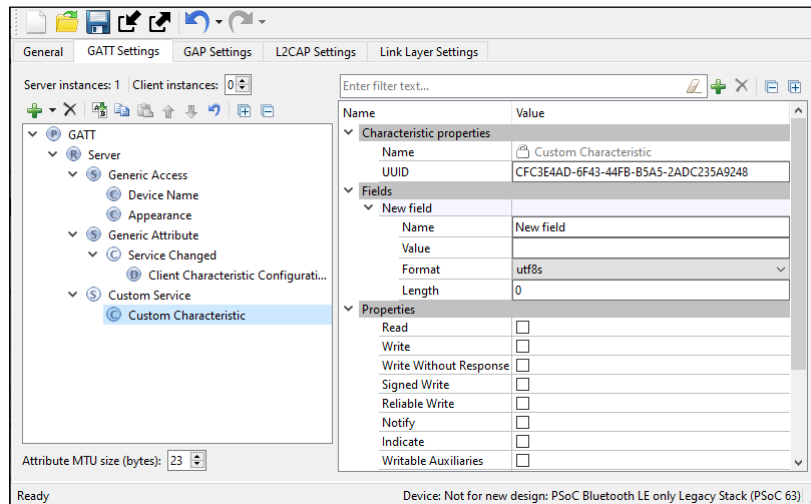
- Primary** – Represents the primary functionality of the device.
- Secondary** – Represents additional functionality of the device. The secondary service must be included in another service.

6.4.7.3 Included services

- The list of the services that can be included in the selected service. Each service may have one or more included services. The included services provide additional functionality for the service.

Parameters configuration

6.4.8 Custom Characteristic configuration



6.4.8.1 UUID

A universally unique identifier of the Characteristic. This field is editable for **Custom Characteristic**. By default, it is initialized with a random 128-bit UUID.

6.4.8.2 Fields

The fields represent a Characteristic value. The default value for each field can be set in the Value property. The fields are customizable for the Custom Characteristic. You can add or delete fields using the tool buttons located above the Properties editor.

6.4.8.3 Properties

The Characteristic properties define how the Characteristic value can be used. Some properties (Broadcast, Notify, Indicate, Reliable Write, Writable Auxiliaries) require the presence of a corresponding Characteristic Descriptor. For details, see [Bluetooth® Core Specification](#) Vol.3, part G (GATT), Section 3.3.1.1 "Characteristic Properties".

6.4.8.4 Permissions

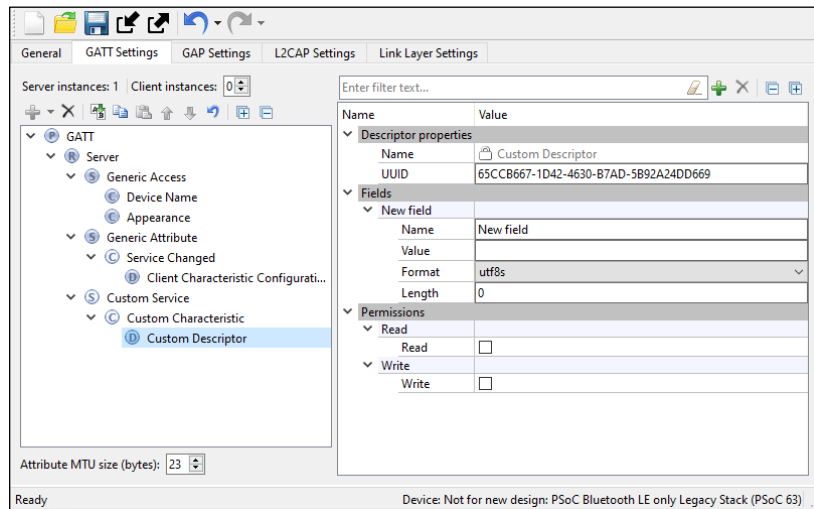
Characteristic permissions define how the **Characteristic Value** attribute can be accessed and the security level required for this access. Access permissions are set based on the Characteristic properties.

Permissions parameters differ depending on the selected device.

For **PSoC™ 63 with Legacy Stack**, the **Auto sync** property is available which determines if the **Security permissions** are automatically updated when the **Security Mode** or **Security Level** parameters are changed in **Security Configuration 0** on the **GAP Settings** tab. Additional Security configurations do not affect attribute permissions.

Parameters configuration

6.4.9 Custom Descriptor configuration



6.4.9.1 UUID

A universally unique identifier of the **Descriptor**. This field is editable for **Custom Descriptors**. By default, it is initialized with a random 128-bit UUID.

6.4.9.2 Fields

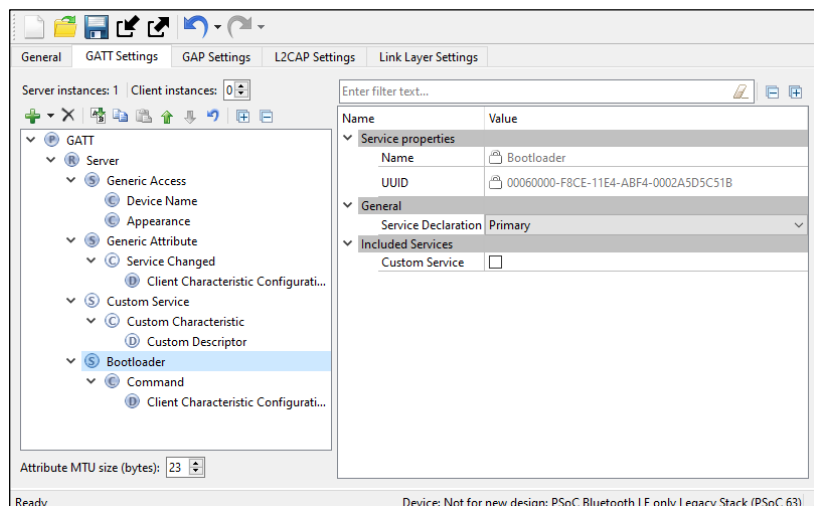
Fields represent a descriptor value. The default value for each field can be set in the Value property. In case of the **Custom Descriptor**, the fields are customizable. You can add or delete fields using the tool buttons located above the **Properties** editor.

6.4.9.3 Permissions

Descriptor permissions define how the **Descriptor** attribute can be accessed and the security level required for this access. **Permissions** parameters differ depending on the selected device.

6.4.10 Bootloader service configuration

This service is available for **PSoC™ Bluetooth® LE only Legacy Stack (PSoC™ 63)**.

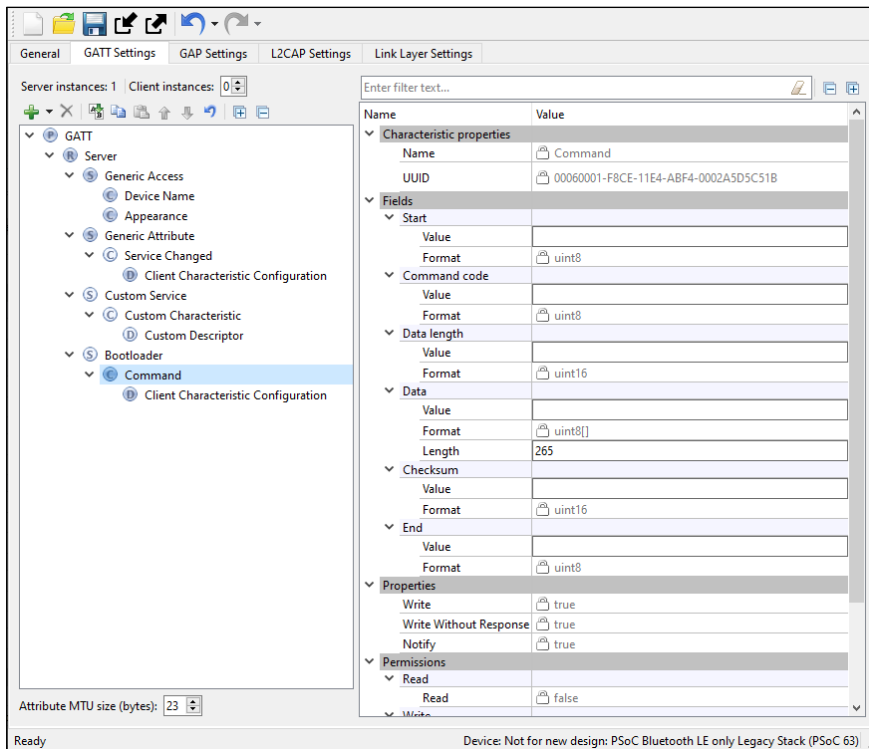


Parameters configuration

6.4.10.1 UUID

A universally unique identifier of the service. The **UUID** is set to 00060000-F8CE-11E4-ABF4-0002A5D5C51B.

6.4.11 Command characteristic configuration



6.4.11.1 UUID

The universally unique identifier of the Characteristic. The **UUID** is set to 00060001-F8CE-11E4-ABF4-0002A5D5C51B.

6.4.11.2 Fields

The fields represent Command Characteristic values that define:

- **Start of packet** – The start of a bootloader packet.
- **Command** – A bootloader command.
- **Status Code** – Command status code.
- **Data Length** – The length of a bootloader command/response to be set to the maximum command data length that can be used in the design.

Per Bluetooth® Low Energy protocol, if the command requires a response larger than 20 bytes, the attribute MTU size should be increased. To support responses with a data length set to 56 (response for Get Metadata command), the attribute MTU size is set to 66 according to the equation:

$$MTU\ size = Data\ Length + Bootloader\ command\ overhead + notification\ parameters\ overhead$$

where:

- *Data Length* = the response data length
- Bootloader command overhead = 7
- Notification parameters overhead = 3

Parameters configuration

If the requirements are not followed, the Bluetooth® resource will fail to send a response to the requested command.

- **Data** – Bootloader command data. The length of this field is specified by the Data Length field.
- **Checksum** – A checksum computed for the entire packet except for the Checksum and End of Packet fields.
- **End of Packet** – The end of a bootloader packet.

6.5 GAP Settings tab (CYW43xxx, CYW55xxx, PSoC™ 63 with Legacy Stack)

The GAP parameters define the general connection settings required when connecting Bluetooth® devices. The tab contains various sections of parameters based on the item you select in the tree.

The **GAP Settings** tab displays the settings possible based on the GAP role selected in the **General** tab. This tab allows the default settings of the active tree item to be restored by using the Restore Defaults button.

Note: Many parameter settings also contain an **Enable <parameter>** check box above them to enable or disable the parameter, in addition to setting that parameter's value.

The following sections show the different categories of parameters based on what item you select in the tree.

6.5.1 Toolbar

The toolbar contains a means to add or delete GAP role configurations and **Security** configurations.

- **Add (PSoC™ Bluetooth® LE only Legacy Stack (PSoC™ 63))** – Allows adding: Peripheral, Central, Broadcaster, Observer or Security configurations.

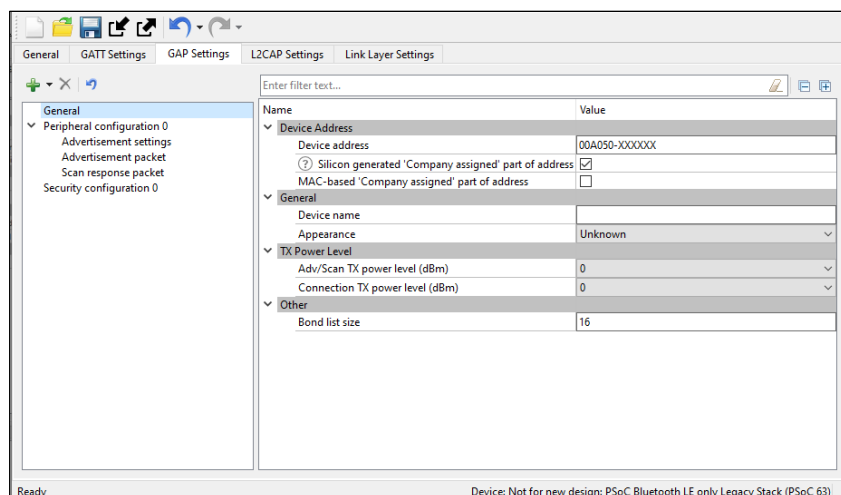
Note: The available options depend on the GAP role selected in the **General** tab. You can add several configurations for one GAP role and switch between them using the firmware.

- **Delete (PSoC™ Bluetooth® LE only Legacy Stack (PSoC™ 63))** – Deletes the selected Configuration.

6.5.2 GAP Settings tab – General

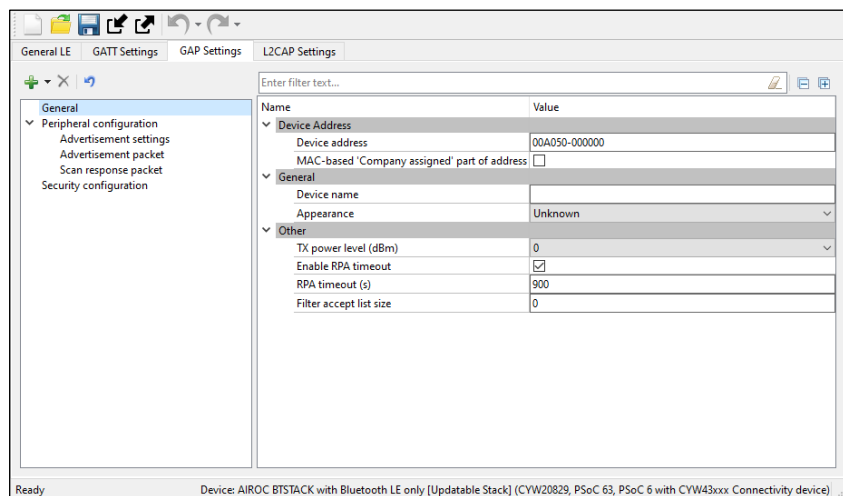
This General section contains general GAP parameters. **CYW43xxx, CYW55xxx, and PSoC™ Bluetooth® LE only Legacy Stack (PSoC™ 63)** have different sets of parameters.

6.5.2.1 PSoC™ Bluetooth® LE only Legacy Stack (PSoC™ 63)



Parameters configuration

6.5.2.2 CYW43xxx, CYW55xxx



6.5.2.3 Device Address

This is a unique 48-bit Bluetooth® public address used to identify the device. It is divided into two parts:

- **Company ID** – The 24 most significant bits: a 24-bit Organization Unique Identifier (OUI) address assigned by IEEE.
- **Company assigned** – The 24 least-significant bits.

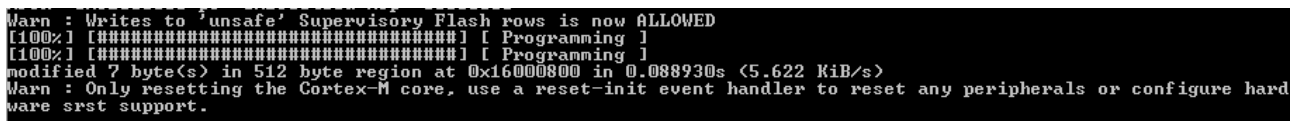
The address configured here is static and designed for development purposes only.

Note: For **PSoC™ Bluetooth® LE only Legacy Stack (PSoC™ 63)**, during production, the device address is programmed into the user area of the supervisory flash (Sflash) location for the device address (Row 0) via the SWD interface. Normally, this address must be programmed only once during mass production, and then never changed in-field. However, application flash can be reprogrammed in-field many times.

During prototyping (FW design), the device address can be programmed into the user area of the Sflash location using the CYPRESS™ Programmer OpenOCD CLI. Refer to [Cypress Programmer 2.0 OpenOCD CLI User Guide](#) for more details.

The following command is an example of using the CLI to update the device address structure (type of cy_stc_ble_gap_bd_addr_t) with the data: 11 00 00 50 A0 00 00 (first 6 bytes are address with LSB first and last byte is the address type) in the Row 0 (0x1600 0800) of user area of the Sflash.

```
openocd.exe -s ../scripts -f interface/kitprog3.cfg -f target/psoc6.cfg -c " init;
reset init; psoc6 allow_unsafe_sflash on; flash rmw 0x16000800 11000050A00000;
reset; exit"
```



Row 1, Row 2, and Row 3 of the user area of the Sflash are not used by Bluetooth® LE and available for the user information storage.

Parameters configuration

6.5.2.4 Silicon generated 'Company assigned' part of address (PSoC™ Bluetooth® LE only Legacy Stack (PSoC™ 63))

When checked, the "'Company assigned' part of address" is generated using the factory programmed die X/Y location, wafer ID and lot ID of the silicon.

Note: The "Silicon generated 'Company assigned' part of address" option does not guarantee a unique device address. For mass production, Infineon Technologies strongly suggests that the device address be programmed into the user area (Row 0) of the Sflash location via the SWD interface.

6.5.2.5 MAC-based 'Company assigned' part of address

When checked, the "'Company assigned' part of address" is generated based on the MAC address of the PC.

6.5.2.6 Device name

The device name to be displayed on the peer side. It has a Read (without authentication/authorization) property associated with it by default. This parameter can be up to 248 bytes.

Note: This parameter configures the GAP Service Device Name Characteristic located in the Profile Tree. It is available for modification only when the device is a GATT Server.

6.5.2.7 Appearance

The device logo or appearance is a SIG-defined 2-byte value. It has a Read (without authentication/authorization) property associated with it by default.

Note: This parameter configures the GAP Service Appearance Characteristic located in the Profile Tree, available for modification only when the device is a GATT Server.

6.5.2.8 Adv/Scan TX power level (PSoC™ Bluetooth® LE only Legacy Stack (PSoC™ 63))

The initial transmitter power level (dBm) of the advertisement or scan channels upon startup. Default: 0 dBm. Possible values: -20 dBm, -16 dBm, -12 dBm, -6 dBm, 0 dBm, 4 dBm.

6.5.2.9 Connection TX power level (PSoC™ Bluetooth® LE only Legacy Stack (PSoC™ 63))

The initial transmitter power level (dBm) of the connection channels upon startup. Default: 0 dBm. Possible values: -20 dBm, -16 dBm, -12 dBm, -6 dBm, 0 dBm, 4 dBm.

6.5.2.10 TX power level (CYW43xxx, CYW55xxx)

The initial transmitter power level (dBm) upon startup. Default: 0 dBm. Possible values: -16 dBm, -12 dBm, -8 dBm, -4 dBm, 0 dBm, 4 dBm, 8 dBm, 12 dBm.

6.5.2.11 Bond list size (PSoC™ Bluetooth® LE only Legacy Stack (PSoC™ 63))

The maximum number of bonded devices supported by this device. The valid range is from 1 to 128. Default: 16.

Parameters configuration

Note: The maximum number of bonded devices is also limited by the size of an available application flash (emulated EEPROM area) size to be consumed for data storage. The consumed application flash size is calculated as the multiple of the number of supported services and the multiple of the number of supported bonded devices.

6.5.2.12 RPA timeout (CYW43xxx, CYW55xxx)

The interval of random address refreshing (seconds). The valid range is 1 – 41400. Default: 900.

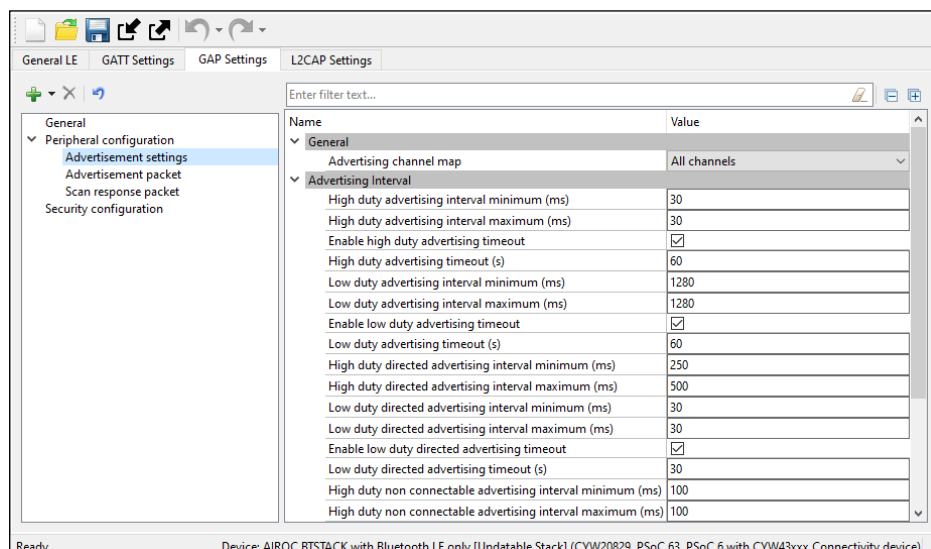
6.5.2.13 Filter accept list size (CYW43xxx, CYW55xxx)

The maximum number of devices that can be added to the Filter accept list. The valid range is 0 – 128. Default: 0.

6.5.3 GAP Settings tab – Advertisement settings

6.5.3.1 PSoC™ Bluetooth® LE only Legacy Stack (PSoC™ 63)

These parameters are available when the device is configured to contain a Peripheral or Broadcaster [GAP role](#).



- Discovery mode
 - Non-discoverable – The device cannot be discovered by a Central device.
 - Limited – Enables a device to be discoverable only for a limited period of time, during temporary conditions, or for a specific event. The device advertising in Limited Discoverable mode can connect to the Central device that is performing the Limited Discovery procedure. The timeout duration is defined by the applicable advertising timeout parameter.
 - General – The device is used by devices to be discoverable continuously or for no specific condition. The device advertising in General Discoverable mode can connect to the Central device that is performing the General Discovery procedure.
- Advertising type

This parameter defines the advertising type to be used by the LL for appropriate Discovery mode.

 - Connectable undirected advertising – Advertises advertising and scan response data. It allows any other device to connect to this device.

Parameters configuration

- Scannable undirected advertising – Broadcasts advertising data and scan response data to active scanners.
- Non-connectable undirected advertising – Broadcasts advertising data.
- Filter policy

This parameter defines how the scan and connection requests are filtered.

 - Scan request – Any | Connect request: Any – Processes scan and connect requests from all devices.
 - Scan request – Filter accept list | Connect request: Any – Processes scan requests only from the devices in the Filter accept list and connect requests from all devices.
 - Scan request – Any | Connect request: Filter accept list – Processes scan requests from all devices and connect requests only from the devices in the Filter accept list.
 - Scan request – Filter accept list | Connect request: Filter accept list – Processes scan and connect requests only from the devices in the Filter accept list.
- Advertising channel map

This parameter is used to enable a specific advertisement channel.

 - Channel 37 – Enables advertisement channel #37.
 - Channel 38 – Enables advertisement channel #38.
 - Channel 39 – Enables advertisement channel #39.
 - Channels 37 and 38 – Enables advertisement channels #37 and #38.
 - Channel 37 and 39 – Enables advertisement channels #37 and #39.
 - Channels 38 and 39 – Enables advertisement channels #38 and #39.
 - All channels – Enables all three advertisement channels.
- Advertising interval

This parameter defines the interval between two advertising events. Set the permissible minimum and maximum values of two Advertisement interval types: Fast advertising interval and Slow advertising interval. Typically, after the device initialization, a peripheral device uses the Fast advertising interval. After the Fast advertising interval timeout value expires, and if a connection with a Central device is not established, then the Profile switches to Slow advertising interval to save the battery life. After the Slow advertising interval timeout value expires, `CY_BLE_EVT_GAPP_ADVERTISEMENT_START_STOP` event is generated.

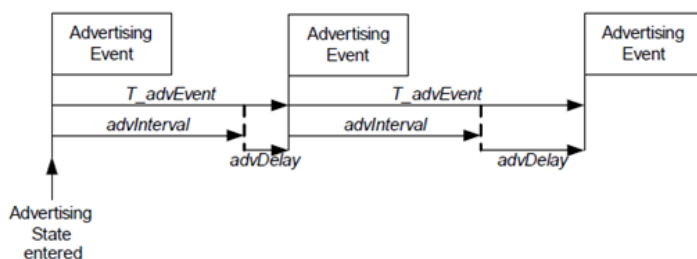
Note: The Advertising interval needs to be aligned with the selected Profile specification.

- Fast advertising interval – This advertisement interval results in faster LE Connection. The Bluetooth® resource uses this interval value when the connection time is between the specified minimum and maximum values of the interval.
 - Minimum – The minimum interval for advertising data and establishing the LE Connection. The parameter is configured to increment in multiples of 0.625 ms. The valid range is from 20 ms to 10240 ms.
 - Maximum – The maximum interval for advertising data and establishing the LE Connection. The parameter is configured to increment in multiples of 0.625 ms. The valid range is from 20 ms to 10240 ms.
 - Timeout – The timeout value of advertising with fast advertising interval parameters. When equals 0, the device is advertising continuously and slow advertising settings become unavailable. A timeout

Parameters configuration

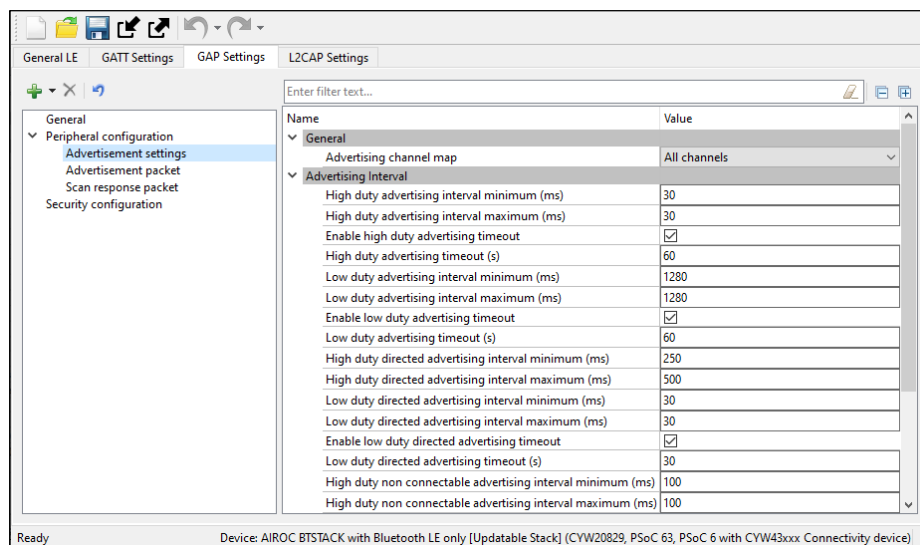
cannot occur before the advertising interval expires. So, if a timeout value is smaller than the fast advertising interval minimum value, a warning displays.

- Slow advertising interval – Defines the advertising interval for slow advertising. This is an optional parameter to implement advertising with a lower duty cycle to save battery life. The Slow advertising interval parameters are applied to the device after an internal fast advertising interval timeout occurs. The minimum and maximum values defined using this parameter allow the Bluetooth® LE Stack to expect advertising to happen within these intervals. This parameter is not applicable in General discovery mode.
 - Minimum – The minimum interval for advertising the data and establishing the LE Connection. The parameter is configured to increment in multiples of 0.625 ms. The valid range is from 1000 ms to 10240 ms.
 - Maximum – The maximum interval for advertising the data and establishing the LE Connection. The parameter is configured to increment in multiples of 0.625 ms. The valid range is from 1000 ms to 10240 ms.
 - Timeout – A timeout value of advertising with slow advertising interval parameters. When equals 0, the device is advertising continuously. A timeout cannot occur before the advertising interval expires, that is why if the timeout value is smaller than the slow advertising interval minimum value, a warning displays.



- AdvDelay – A pseudo-random delay of 0-10 ms.
- Complete Advertising Event – Consists of one advertising PDU sent into each of the used advertising channels.

6.5.3.2 CYW43xxx, CYW55xxx



- Advertising channel map

Parameters configuration

This parameter is used to enable a specific advertisement channel:

- Channel 37 – Enables advertisement channel #37.
- Channel 38 – Enables advertisement channel #38.
- Channel 39 – Enables advertisement channel #39.
- Channels 37 and 38 – Enables advertisement channels #37 and #38.
- Channel 37 and 39 – Enables advertisement channels #37 and #39.
- Channels 38 and 39 – Enables advertisement channels #38 and #39.
- All channels – Enables all three advertisement channels.
- Advertising interval

This parameter defines the interval between two advertising events.

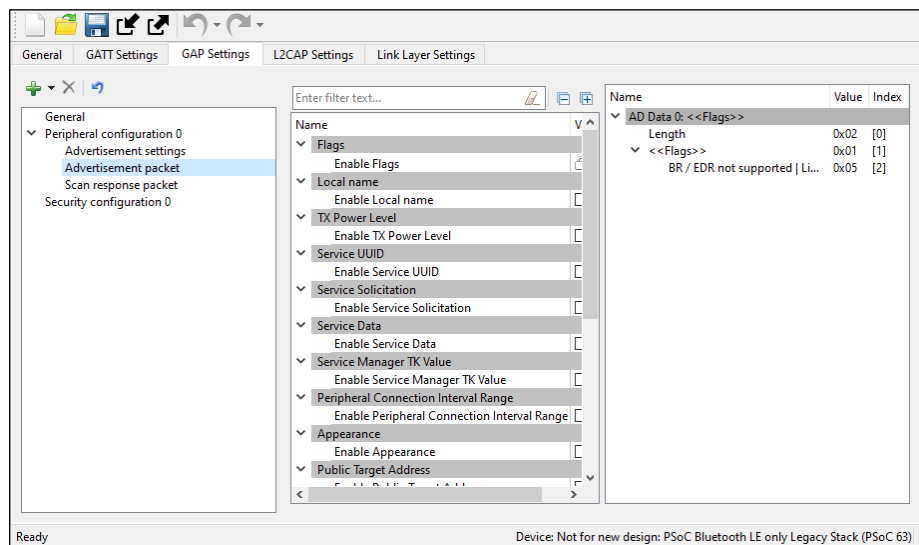
- High-duty advertising interval
 - Minimum – The minimum interval for advertising data and establishing the LE Connection. The parameter is configured to increment in multiples of 0.625 ms.
 - Maximum – The maximum interval for advertising data and establishing the LE Connection. The parameter is configured to increment in multiples of 0.625 ms.
 - Duration – The duration of advertising with high-duty advertising interval parameters. When not enabled, the device is advertising continuously.
- Low duty advertising interval
 - Minimum – The minimum interval for advertising data and establishing the LE Connection. The parameter is configured to increment in multiples of 0.625 ms.
 - Maximum – The maximum interval for advertising data and establishing the LE Connection. The parameter is configured to increment in multiples of 0.625 ms.
 - Duration – The duration of advertising with low-duty advertising interval parameters. When not enabled, the device is advertising continuously.
- High duty directed advertising interval
 - Minimum – The minimum interval for advertising data and establishing the LE Connection. The parameter is configured to increment in multiples of 0.625 ms.
 - Maximum – The maximum interval for advertising data and establishing the LE Connection. The parameter is configured to increment in multiples of 0.625 ms.
- Low duty directed advertising interval
 - Minimum – The minimum interval for advertising data and establishing the LE Connection. The parameter is configured to increment in multiples of 0.625 ms.
 - Maximum – The maximum interval for advertising data and establishing the LE Connection. The parameter is configured to increment in multiples of 0.625 ms.
 - Duration – The duration of advertising with low-duty directed advertising interval parameters. When not enabled, the device is advertising continuously.
- High duty non connectable advertising interval
 - Minimum – The minimum interval for advertising data and establishing the LE Connection. The parameter is configured to increment in multiples of 0.625 ms.
 - Maximum – The maximum interval for advertising data and establishing the LE Connection. The parameter is configured to increment in multiples of 0.625 ms.

Parameters configuration

- Duration – The duration of advertising with high-duty non-connectable advertising interval parameters. When not enabled, the device is advertising continuously.
- Low duty non connectable advertising interval
 - Minimum – The minimum interval for advertising data and establishing the LE Connection. The parameter is configured to increment in multiples of 0.625 ms.
 - Maximum – The maximum interval for advertising data and establishing the LE Connection. The parameter is configured to increment in multiples of 0.625 ms.
 - Duration – The duration of advertising with low-duty non-connectable advertising interval parameters. When not enabled, the device is advertising continuously.

6.5.4 GAP Settings tab – Advertisement packet

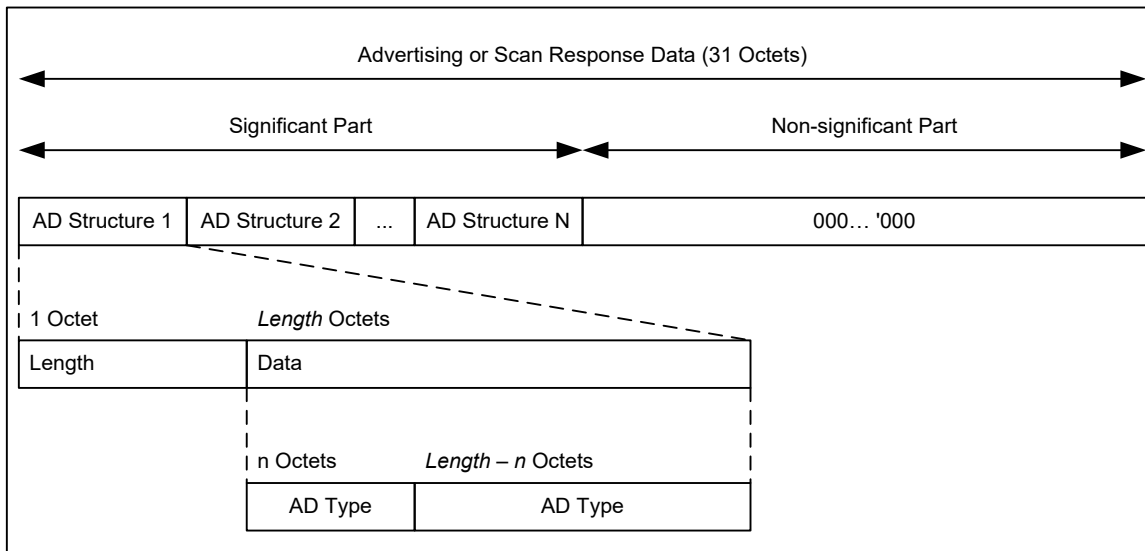
This Advertisement packet section displays when the device is configured to contain a Peripheral or Broadcaster [GAP role](#). It is used to configure **Advertisement** data to be used in device advertisements.



- Advertisement / Scan response packet data settings

Parameters configuration

An **Advertisement (AD)** or **Scan response packet** data is a 31-byte payload used to declare the device's Bluetooth® Low Energy capability and its connection parameters. The structure of this data is shown below as specified in the Bluetooth® specification.



The data packet can contain a number of AD structures. Each of these structures is composed of the following parameters.

- AD Length – The size of the AD Type and AD Data in bytes.
- AD Type – The type of an advertisement within the AD structure.
- AD Data – Data associated with the **AD Type**.

The total length of a complete Advertising packet cannot exceed 31 bytes.

An example structure for Advertisement data or Scan response data is as follows:

- AD Structure Element Definition:
- AD Length – Size of AD Type and associated AD Data = 5 bytes
- AD Type (1 byte) – 0x03 (Service UUID)
- AD Data (4 bytes) – 0x180D, 0x180A (Heart Rate Service, Device Information Service)

The following table shows the AD Types:

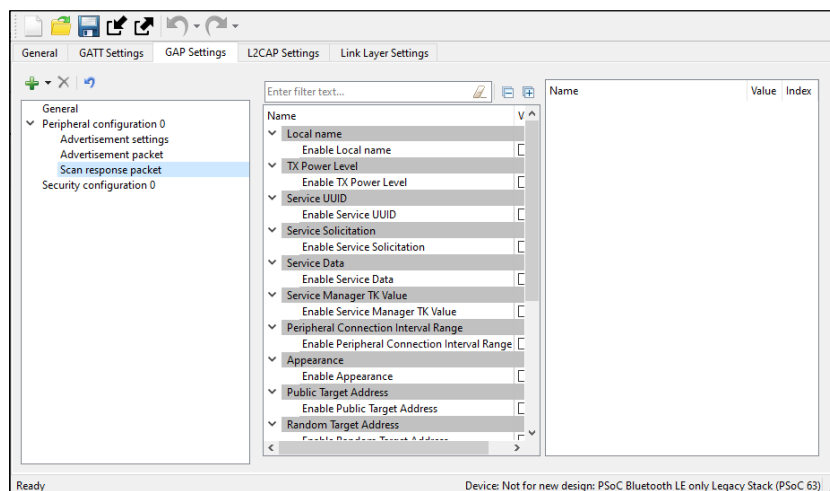
AD Type	Description
Flags	Flags to broadcast the underlying Bluetooth® LE transport capability such as Discoverable mode, LE only, etc.
Local Name	Device Name (complete or shortened). The device name value comes from the Device name field on the GAP Settings tab, under General.
TX Power Level	Transmit Power Level. Taken from the Adv/Scan TX power level (PSoC™ Bluetooth® LE only Legacy Stack (PSoC™ 63)) or TX power level (CYW43xxx, CYW55xxx) field on the GAP Settings tab, under General .
Peripheral Connection Interval Range	The preferred connection interval range for the device. Not available in the Broadcaster GAP role.
Service UUID	The list of Service UUIDs to be broadcasted that the device has implemented. There are different AD Type values to advertise 16-bit, 32-bit, and 128-bit Service UUIDs. 16-bit and 32-bit Service UUIDs are used if they are assigned by the Bluetooth® SIG.

Parameters configuration

AD Type	Description
Service Solicitation	The list of Service UUIDs from the central device to be used by the peripheral device. There are different AD Type values to advertise 16-bit, 32-bit, and 128-bit Service UUIDs.
Service Data	2/4/16-byte Service UUID, followed by additional Service data.
Security Manager TK value	A temporal key to use at the time of pairing. Not available in the Broadcaster GAP role.
Appearance	The external appearance of the device. The value comes from the Appearance field on the GAP Settings tab, under General .
Public Target Address	The public device address of intended recipients.
Random Target Address	The random device address of intended recipients.
Advertising Interval	For PSoC™ Bluetooth® LE only Legacy Stack (PSoC™ 63) , calculated as an average of Fast advertising interval minimum and maximum values configured on the GAP Settings tab, under Advertisement settings .
LE Bluetooth® Device Address	The device address of the local device. The value comes from the Public device address field on the GAP Settings tab, under General .
LE Role	Supported LE roles. Not available in the Broadcaster GAP role.
URI	URI, as defined in the IETF STD 66.
Manufacturer Specific Data	The 2-byte company identifier followed by manufacturer specific data.
Indoor Positioning	Data specified in the Indoor Positioning Service Specification . Available when there is the Indoor Positioning Service in the Profile.

6.5.5 GAP Settings tab – Scan response packet

This Scan response packet section displays when the device is configured to contain a Peripheral or Broadcaster [GAP role](#). It is used to configure a Scan response data packet to be used in response to device scanning performed by a GATT Client device.

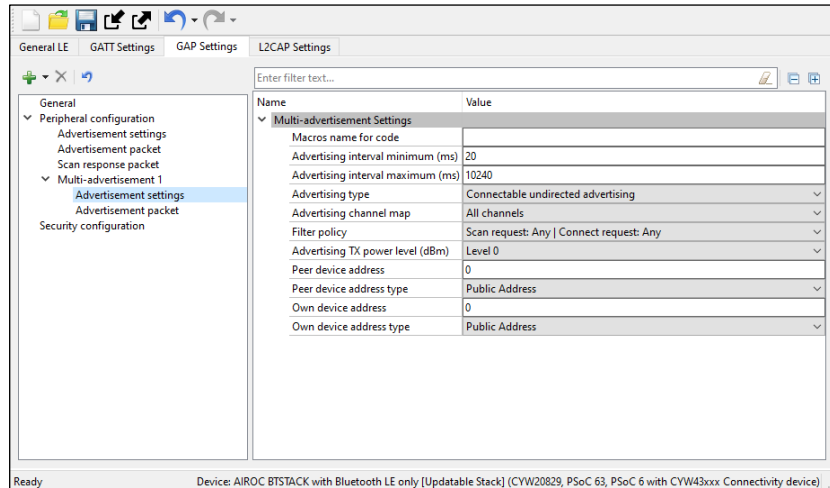


The packet structure of a **Scan response packet** is the same as an **Advertisement packet**. See [Advertisement / Scan response data settings](#) for information on configuring the **Scan response packet**.

Parameters configuration

6.5.6 GAP Settings tab – Multi-advertisement

The Multi-advertisement option is available when the device is configured to contain a Peripheral or Broadcaster [GAP role](#). This feature allows you to advertise different sets of data at different time intervals. You can add up-to-ten multi-advertisement instances to the configuration tree and set different advertisement parameters and data.



The parameters are as follows:

- **Macros name for code**
Provides a meaningful name to the instance to create a macro-definition in the generated code.
- **Advertising interval minimum (ms); Advertising interval maximum (ms)**
Configured to increment in multiples of 0.625ms.
- **Advertising type**
This parameter has four options of advertising to select: Connectable undirected; Connectable directed; Scannable undirected, Non-connectable undirected; Connectable low duty cycle directed.
- **Advertising channel map**
Selection of primary advertising channels – 37, 38, 39.
- **Filter policy**
Setting the Scan request and Connect request filtering options.
- **Advertising TX power level (dBm)**
Selection of a transmission power level: from -12dBm (level 0) to 4dBm (level 4).
- **Peer device address**
The six-byte address of a peer BLE device.
- **Peer device address type**
The public, random, Address or ID address of a peer BLE device.
- **Own device address**
The own device six-byte address.
- **Own device address type**
The own device public, random, Address or ID address type.

For more details on the parameters, refer to

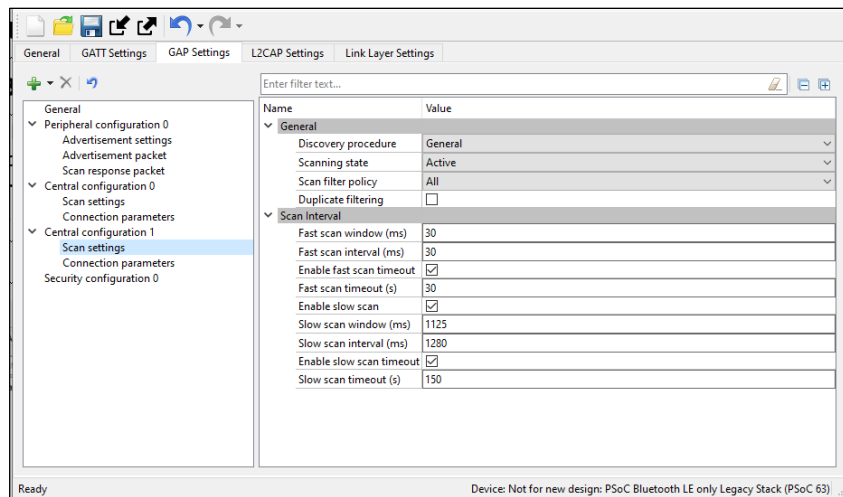
Parameters configuration

[GAP Settings tab – General](#) and [GAP Settings tab – Advertisement settings](#).

6.5.7 GAP Settings tab – Scan settings

6.5.7.1 PSoC™ Bluetooth® LE only Legacy Stack (PSoC™ 63)

These parameters are available when the device is configured to contain the Central or Observer [GAP role](#). Typically, during a device discovery, the GATT Client device initiates the scan procedure. It uses the Fast scan parameters for a period of time, approximately 30 to 60 seconds, and then it reduces the scan frequency using the Slow scan parameters.



Note: *The scan interval needs to be aligned with the user-selected Profile specification.*

- Discovery procedure
 - Limited – A device that performs this procedure will discover a device that does limited Discovery mode advertising only.
 - General – A device that performs this procedure will discover a device that does general and limited Discovery advertising.
- Scanning state
 - Passive – A device can only listen to advertisement packets.
 - Active – A device may ask the advertiser for additional information.
- Filter policy

This parameter defines how the advertisement packets are filtered.

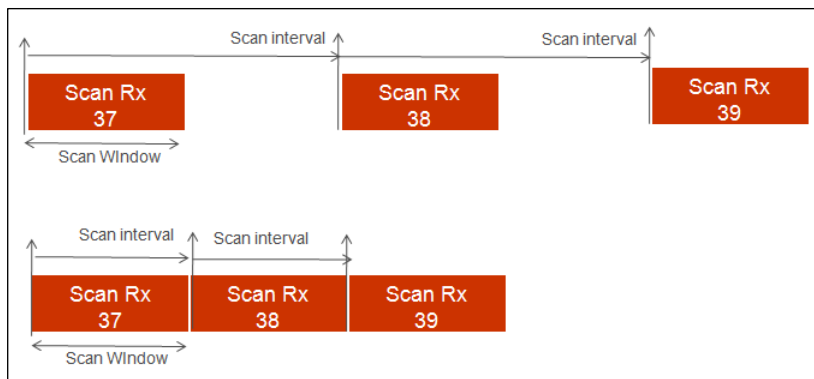
- All – All advertisement packets are processed.
- Filter accept list only – Only advertisement packets from the devices in the Filter accept list are processed.
- Duplicate filtering
- When enabled, this activates filtering of duplicated advertisement data. If disabled, the Bluetooth® LE stack will not perform filtering of advertisement data.

Note: *The controller firmware has eight address locations reserved to cache the previously seen advertiser devices and filter duplicate packets from them. If there are more than eight advertising devices in the proximity of a scanner during the scan period, the address storing buffer is*

Parameters configuration

exhausted. The firmware algorithm for overwriting the address cache buffer is implemented in the FIFO fashion. When the scanner sees more than eight advertisers, the ninth advertiser replaces the first one, the tenth advertiser replaces the second one, and so on, in the address cache. After flushing the first advertiser from the address cache, if the scanner sees the first advertiser's ADV packet again, it thinks that it is a new device (as the first advertiser is no longer in the address cache) resulting in sending an ADV packet to the host.

- Scan parameters
- These parameters define the scanning time and interval between scanning events. Two different sets of Scan parameters are used: Fast scan parameters and Slow scan parameters. Typically, after the device initialization, a central device uses the Fast scan parameters. After the Fast scan timeout value expires, and if a connection with a Peripheral device is not set, then the Profile switches to the Slow scan parameters to save the battery life. After the Slow scan timeout value expires, the `CY_BLE_EVT_GAPC_SCAN_START_STOP` event is generated. See the API documentation.

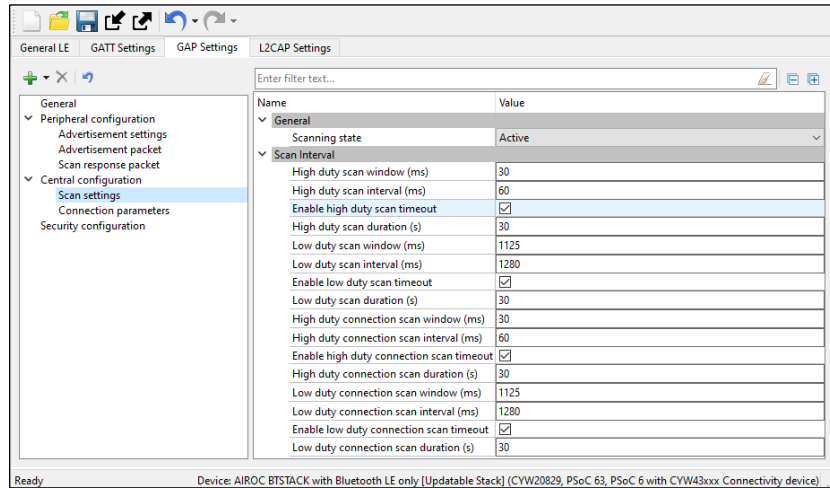


- Fast scan parameters – This connection type results in a faster connection between the GATT Client and Server devices than it is possible using a normal connection.
 - Scan Window – This parameter defines the scan window when operating in Fast connection. The parameter is configured to increment in multiples of 0.625 ms. The valid range is from 2.5 ms to 10240 ms. Scan Window must be less than the Scan Interval. Default: 30 ms.
 - Scan Interval – This parameter defines the scan interval when operating in Fast connection. The parameter is configured to increment in multiples of 0.625 ms. The valid range is from 2.5 ms to 10240 ms. Default: 30 ms.
 - Scan Timeout – The timeout value of scanning with fast scan parameters. Default: 30 s. When not enabled, the device is scanning continuously. A timeout cannot occur before the scanning interval is expired, that is why if a timeout value is smaller than the slow scanning interval minimum value, a warning displays.
- Slow scan parameters – This connection results in a slower than possible connection between the GATT Client and GATT Server devices that use a normal connection. However, this method consumes less power.
 - Scan Window – This parameter defines the scan window when operating in Slow Connection. The parameter is configured to increment in multiples of 0.625ms. The valid range is from 2.5 ms to 10240 ms. Scan Window must be less than the Scan Interval. Default: 1125 ms.
 - Scan Interval – This parameter defines the scan interval when operating in Slow Connection. The parameter is configured to increment in multiples of 0.625 ms. The valid range is from 2.5 ms to 10240 ms. Default: 1280 ms.
 - Scan Timeout – The timeout value of scanning with slow scan parameters. Default: 150 s. When not enabled, the device is scanning continuously. A timeout cannot occur before the scanning interval

Parameters configuration

expires, so if a timeout value is smaller than the slow scanning interval minimum value, a warning displays.

6.5.7.2 CYW43xxx, CYW55xxx



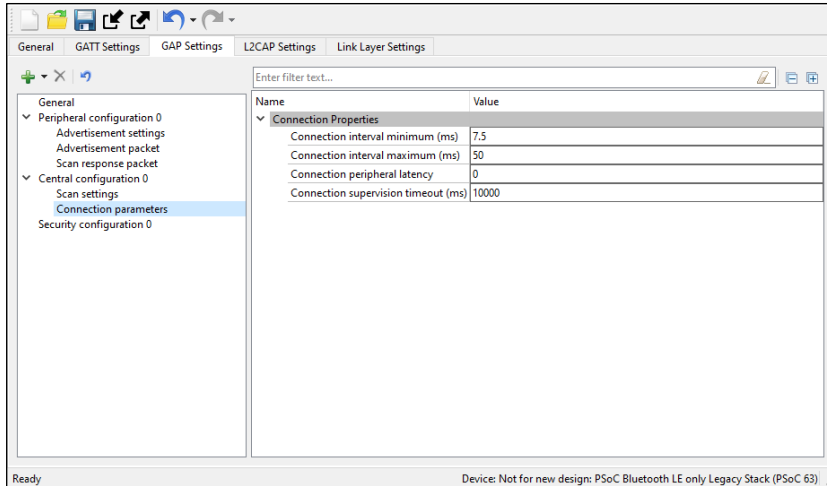
- Scanning state
 - Passive – A device can only listen to advertisement packets.
 - Active – A device may ask the advertiser for additional information.
- Scan parameters
 - High duty scan parameters
 - Scan Window – The parameter is configured to increment in multiples of 0.625 ms. Scan Window must be less than Scan Interval.
 - Scan Interval – The parameter is configured to increment in multiples of 0.625 ms.
 - Scan Duration – The timeout value of scanning with high-duty scan parameters. Default: 30 s. When not enabled, the device is scanning continuously.
 - Low duty scan parameters
 - Scan Window – The parameter is configured to increment in multiples of 0.625 ms. The valid range is from 2.5 ms to 10240 ms. Scan Window must be less than Scan Interval.
 - Scan Interval – The parameter is configured to increment in multiples of 0.625 ms.
 - Scan Duration -- The timeout value of scanning with low-duty scan parameters. Default: 30 s. When not enabled, the device is scanning continuously.
 - High duty connection scan parameters
 - Scan Window – The parameter is configured to increment in multiples of 0.625 ms. Scan Window must be less than Scan Interval.
 - Scan Interval – The parameter is configured to increment in multiples of 0.625 ms.
 - Scan Duration – The timeout value of scanning with high duty connection scan parameters. Default: 30 s. When not enabled, the device is scanning continuously.
 - Low duty connection scan parameters
 - Scan Window – The parameter is configured to increment in multiples of 0.625 ms. Scan Window must be less than Scan Interval.
 - Scan Interval – The parameter is configured to increment in multiples of 0.625 ms.

Parameters configuration

- Scan Duration – The timeout value of scanning with low-duty connection scan parameters. Default: 30 s. When not enabled, the device is scanning continuously.

6.5.8 GAP Settings tab – Connection parameters

These parameters define the preferred Bluetooth® LE interface connection settings of the Central.



Note: The scaled values of these parameters are used internally by the Bluetooth® LE stack. These are the actual values sent over the air.

- Connection interval – The Central device connecting to a Peripheral device needs to define the time interval for a connection to happen.
 - Minimum (ms) – This parameter is the minimum permissible connection time value to be used during a connection event. It is configured in steps of 1.25 ms. The valid range is from 7.5 ms to 4000 ms.
 - Maximum (ms) – This parameter is the maximum permissible connection time value to be used during a connection event. It is configured in steps of 1.25 ms. The valid range is from 7.5 ms to 4000 ms.

Note: For the multi-connection use case, recommended the minimum connection interval per connection greater than $N * \text{Max Time taken by individual connections to complete a Bluetooth® Connection Event (CE)}$.

$$\text{Min_CI} = N * \text{Average Time Per CE}$$

The average time for each CE is the amount of time taken to complete one Bluetooth® LE TX and RX transaction. This time varies depending on the Link Layer Data Length Extension (DLE) and Bluetooth® LE data rate (1 Mbps or 2 Mbps) configuration. The application can use the following timing lookup table for the CE value:

- If DLE is enabled and data rate is 1Mbps, Average time = 6ms
- If DLE is enabled and data rate is 2Mbps, Average time = 3.5ms
- If DLE is disabled and data rate is 1Mbps, Average time = 2ms
- If DLE is disabled and data rate is 2Mbps, Average time = 1.6ms

For example, if an application supports 4 Bluetooth® LE connections with DLE and 1-Mbps data rate, the recommended minimum connection interval for each of the connections is:

$$4 * 6 = 24 \text{ ms}$$

Parameters configuration

Note: Connection intervals shorter than this value will still work, but under certain conditions, real-time control procedures (connection update, channel map update etc.) with a shorter update instance might result in a link disconnection.

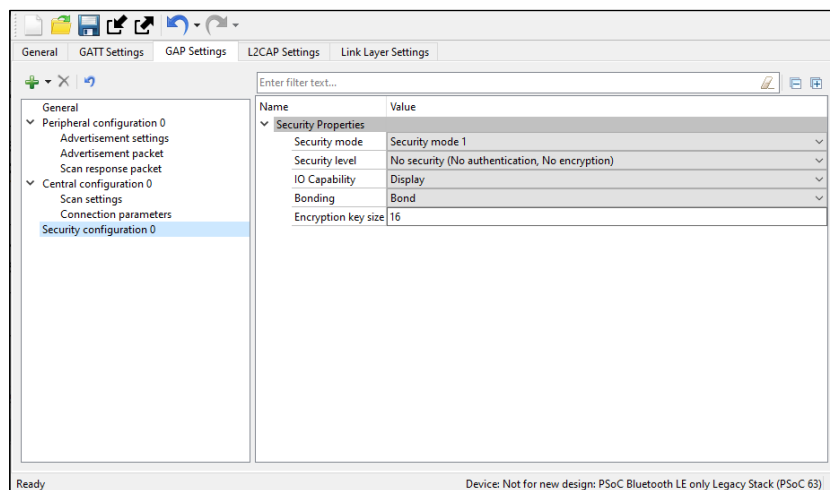
- Peripheral Latency – Defines the latency of the peripheral by responding to a connection event in consecutive connection events. This is expressed in terms of multiples of connection intervals, where only one connection event is allowed per interval. The valid range is 0 - 499 events.
- Connection Supervision Timeout – This parameter defines the LE link supervision timeout interval. It defines the timeout duration for which an LE link needs to be sustained if there is no response from the peer device over the LE link. The time interval is configured in multiples of 10 ms. The valid range is from 100 ms to 32000 ms.

Note: For proper operation, the Connection Supervision Timeout must be larger than $(1 + \text{Peripheral latency}) * \text{Connection Interval} * 2 \text{ (ms)}$. Refer to Bluetooth® Core Specification Volume 6, Part B, Chapter 4.5.2 for more information on Connection Supervision Timeout.

6.5.9 GAP Settings tab – Security configuration

This Security configuration text section contains several parameters to configure the global security options. **CYW43xxx**, **CYW55xxx**, and **PSoC™ Bluetooth® LE only Legacy Stack (PSoC™ 63)** have different sets of parameters.

These parameters are configurable only if a connectable GAP role, Peripheral or Central, is selected. You can optionally set each parameter using its own unique Security Properties in the Profile Tree.



- Security mode
 - Defines the GAP security modes. Both available modes may support authentication:
 - Mode 1 – For designs where data encryption is required
 - Mode 2 – For designs where data signing is required.
- Security level
 - PSoC™ Bluetooth® LE only Legacy Stack (PSoC™ 63)** library:
 - Enables different levels of security depending on the selected Security mode:
 - Mode1
 - No security – The device does not use encryption or authentication.

Parameters configuration

- Unauthenticated pairing with encryption – The device sends encrypted data after establishing a connection with the remote device.
- Authenticated pairing with encryption – The device sends encrypted data after establishing a connection with the remote device. To establish a connection, the devices perform the authenticated pairing procedure.
- Authenticated LE Secure Connections pairing with encryption – The device uses an algorithm called Elliptic curve Diffie–Hellman (ECDH) for key generation, and a new pairing procedure for the key exchange. It also provides a new protection method from Man-In-The-Middle (MITM) attacks - Numeric Comparison.
- Mode 2
 - Unauthenticated pairing with data signing – The device performs data signing prior to sending it to the remote device after a connection is set up.
 - Authenticated pairing with data signing – The device performs data signing prior to sending it to the remote device after a connection is set up. To establish a connection, the device performs the authenticated pairing procedure.
- CYW43xxx, CYW55xxx:
Provides the following levels of security:
 - Auto – The recommended choice for most applications to connect to the widest range of devices. Allows the stack to choose the highest level of security possible between the two devices.
 - Secure Connections – Can be set by applications that need to enforce secure connections.
 - Authentication – Can be set by applications that need to enforce Authentication.
 - Secure Connections with MITM protection – Can be set by applications that need to enforce secure connections with man-in-the-middle (MITM) protection.

Note: This parameter is used in BTSTACK 3.0 or above.

- Keypress notifications

Provides an option for a keyboard device during the LE secure pairing process to send key press notifications when the user enters or deletes a key. This option is available when the Security level is set to Authenticated LE Secure Connections pairing with encryption and I/O capabilities option is set to either Keyboard or Keyboard and Display.

- I/O capabilities

Refers to the device input and output capability, which can enable or restrict a particular pairing method or security level.

- Display – In devices with the display capability and may display authentication data. GAP authentication is required.
- Display Yes/No – In devices with a display and at least two input keys for the Yes/No action. GAP authentication is required.
- Keyboard – In devices with a numeric keypad. GAP authentication is required.
- No Input/No Output – In devices without any capability to enter or display the authentication key data to the user. Used in mouse-like devices. No GAP authentication is required.
- Keyboard and Display – In devices like PCs and tablets. GAP authentication is required.
- Bonding Requirement

Parameters configuration

Used to configure the bonding requirements. The purpose of bonding is to create a relation between two Bluetooth® devices based on a common link key (a bond). The link key is created and exchanged (pairing) during the bonding procedure and is expected to be stored by both Bluetooth® devices, to be used for future authentication. The maximum number of remote devices that can be bonded is 128.

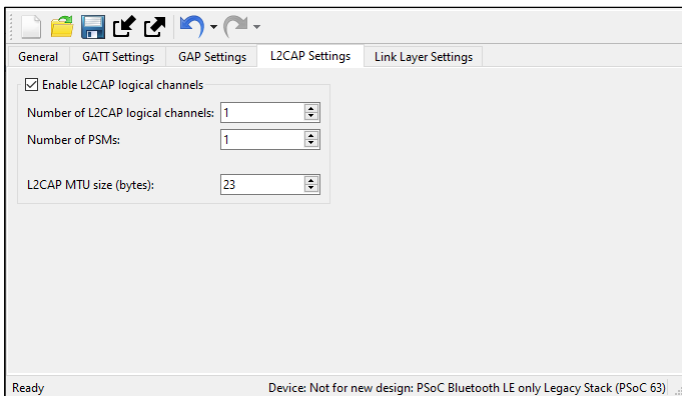
- Bonding – The device stores the link key of a connection after paring with the remote device in the application flash memory. If a connection is lost and re-established, the device uses the previously stored key for the connection.

Note: Bonding information is stored in RAM and is written to the application flash to be retained during a shutdown.

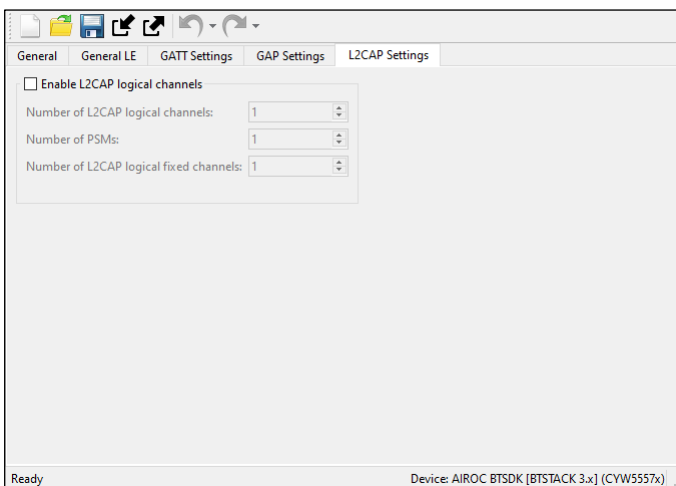
- No Bonding – The pairing process is performed on each connection establishment.
- Encryption Key Size
 Defines the encryption key size based on the Profile requirement. The valid values of an encryption key size are 7 - 16 bytes.

6.6 L2CAP Settings tab (CYW43xxx, CYW55xxx, PSoC™ Bluetooth® LE only Legacy Stack (PSoC™ 63))

The **L2CAP Settings** define the parameters for L2CAP connection-oriented channel configuration.



For **CYW55xxx**, the tab displays as follows:



Parameters configuration

6.6.1 Enable L2CAP logical channels

This parameter enables configuration of the **L2CAP** logical channels.

The default value for **PSoC™ Bluetooth® LE only Legacy Stack (PSoC™ 63)** is true, for **CYW43xxx** and **CYW55xxx** – false.

6.6.2 Number of L2CAP logical channels

This parameter defines the number of Low Energy **L2CAP** connection oriented logical channels required by the application. The valid range is 1 - 255. Default: 1.

6.6.3 Number of PSMs

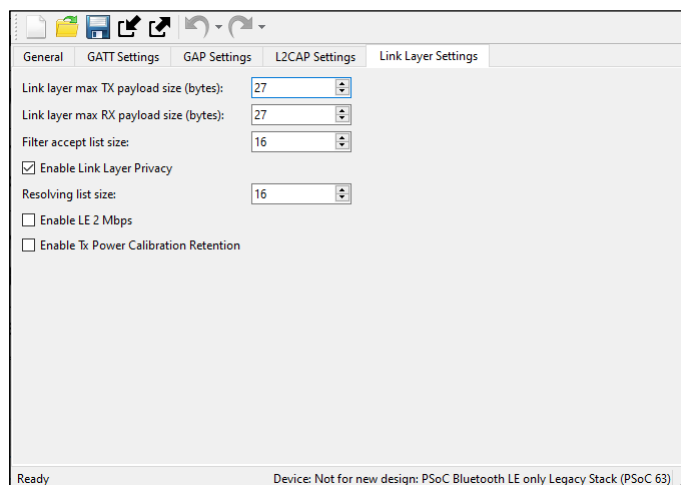
This parameter defines the number of PSMs required by the application. The valid range is 1 - 255. Default: 1.

6.6.4 L2CAP MTU size

This parameter defines the maximum SDU size of an L2CAP packet. The valid range is 23 - 65488 bytes. Default: 1280 bytes when Internet Protocol Support Service is supported and 23 bytes otherwise.

6.7 Link Layer Settings tab (PSoC™ Bluetooth® LE only Legacy Stack (PSoC™ 63))

The **Link Layer Settings** parameters for the Link Layer.



6.7.1 Link Layer Max TX payload size

The maximum link layer transmits a payload size to be used in the design. The actual size of the link-layer transmit packet is decided based on the peer device’s link-layer receive packet size during Data Length Update Procedure and will be informed through the `CY_BLE_EVT_GAP_DATA_LENGTH_CHANGE` event. The valid range is 27 - 251 bytes.

6.7.2 Link Layer Max RX Payload Size

The maximum link layer receives a payload size to be used in the design. The actual size of the link-layer receive packet is decided based on the peer device’s link-layer transmit packet size during Data Length Update Procedure and will be informed through `CY_BLE_EVT_GAP_DATA_LENGTH_CHANGE` event. The valid range is 27 - 251 bytes.

Parameters configuration

Setting **Link Layer Max TX Payload Size** or **Link Layer Max RX Payload Size** to the value greater than 27 enables the Low Energy Data Length Extension feature.

6.7.3 Filter accept list size

The maximum number of devices that can be added to the Filter accept list. The valid range is 1 - 16. Default: 16.

6.7.4 Enable Link Layer Privacy

Enables LL Privacy 1.2 feature of Bluetooth® 4.2 and enables generation of `CY_BLE_EVT_GAP_ENHANCE_CONN_COMPLETE` and `CY_BLE_EVT_GAPC_DIRECT_ADV_REPORT` events.

Note: The `CY_BLE_EVT_GAP_DEVICE_CONNECTED` event is not generated when this feature is enabled.

6.7.5 Resolving list size

The maximum number of peer devices whose addresses should be resolved by this device. This parameter is applicable when the Enable Link Layer Privacy feature is enabled. The valid range is 1 - 16. Default:16.

6.7.6 Enable LE 2 Mbps

Enables the LE 2 Mbps feature of Bluetooth® 5.0.

The LE 2 Mbps feature enables a new Physical (PHY) modulation scheme that allows increasing data throughput between the two devices which support this feature. Refer to Bluetooth® Core Specification v5.0 for more details about this feature.

Use the `Cy_BLE_SetDefaultPhy()` API after the `CY_BLE_EVT_STACK_ON` event to set the preferred default PHY for all connections, or the `Cy_BLE_SetPhy()` API to set PHY for the current connection.

The `CY_BLE_EVT_PHY_UPDATE_COMPLETE` event will indicate when the controller changes the transmitter PHY or receiver PHY in use.

6.7.7 Enable TX Power Calibration Retention

When enabled, the Bluetooth® Low Energy radio TX power calibration is performed only once after programming and the calibration values are retained in the Sflash location. This retained value is reloaded to radio power calibration registers during consecutive device reboots. This reduces the Bluetooth® LE stack boot-up time significantly.

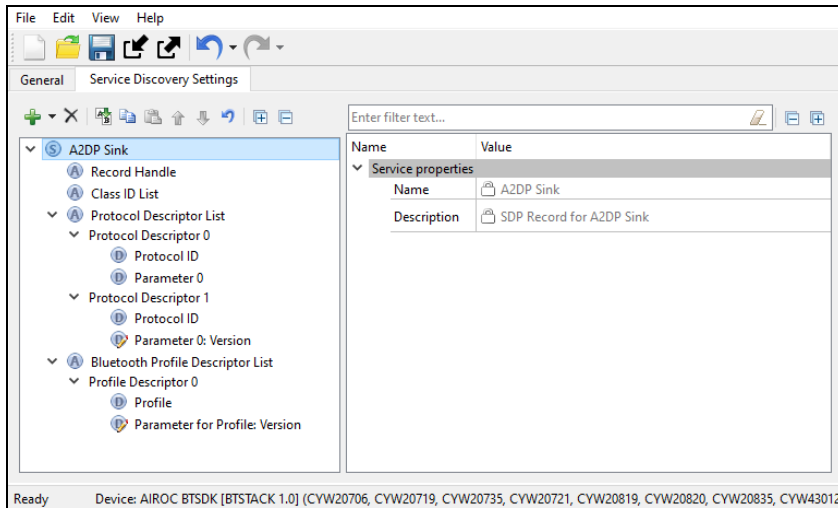
Note: In Bluetooth® LE Dual-core mode, ensure to call the `Cy_SysDisableCM4()` function before enabling the Bluetooth® LE controller [that is, before calling `Cy_BLE_Enable()` on the controller core].

Note: The calibration values are retained in user's row 0 (after `BLE_DEVICE_ADDRESS`) of the Sflash location.

Parameters configuration

6.8 Service Discovery Settings tab (CYW20xxx, CYW55xxx) (Beta)

The **Service Discovery Settings** are used to configure SDP Services. This tab is available for [Bluetooth® modes Single mode BR/EDR](#) or **Dual** mode. The tab has three areas: toolbars, the **Services** tree, and the Parameter configuration pane.



6.8.1 Toolbars

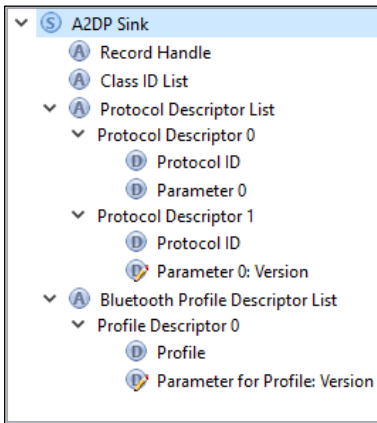
The toolbars contain navigation options and means to add or delete Services and Attributes.

- **Add** – Allows adding a Service or an Attribute to the Services tree. To add an Attribute, highlight the parent Service in the Services tree. Refer to the [Profiles](#) section for the available Services.
- **Delete** – Deletes the selected Service or Attribute.
- **Rename** – Renames the selected item in the Services tree.
- **Copy/Paste** – Copies/pastes items in the Services tree.
- **Move Up** – Moves the selected item up in the Services tree
- **Move Down** – Moves the selected item down in the Services tree.
- **Reset branch to default** – Resets the selected item with child items in the Services tree to the default.
- **Expand All** – Expands all items in the Services tree.
- **Collapse All** – Collapses all items in the Services tree.

Parameters configuration





6.8.2 Services tree

The **Services** tree is used to view SDP Services, Attributes, Data element groups, and Data elements. By navigating through the tree, you can quickly add, delete, or modify Services and Attributes using the toolbar buttons or the context menu.





You can configure the parameters by clicking an item on the tree. These parameters will show in the [Parameters configuration](#) section.

The tree may contain the following nodes:

-  Service
-  Service Attribute
- Data element group
-  Data element.  means that the Data element has editable fields.

In addition, nodes may have the following colors:

-  Shaded icon – The node is mandatory.
-  White icon – The node is optional.

6.8.3 Parameters configuration

The Parameters configuration pane allows you to view and configure a Service, Attribute, or Data element by selecting them in the tree. Attribute values are mainly hard-coded (and thus editing is disabled) to supply the required values according to the Bluetooth® Core Specification. Click through each Attribute and Data element under each Service to identify configurable values, and perform any additional configuration needed.

6.8.4 SDP services

The following SDP Services are available for selection:

- Advanced Audio Distribution Profile (A2DP) Sink
- Advanced Audio Distribution Profile (A2DP) Source
- A/V Remote Control (AVRC) Controller
- A/V Remote Control (AVRC) Target
- Device ID
- Hands-Free Audio Gateway

Parameters configuration

- Hands-Free Unit
- Human Interface Device
- Serial Port

Version changes

7 Version changes

This section lists and describes the changes for each version of this tool.

Version	Change description
1.0	New tool.
1.1	Added 20xxx devices support. Fixed the issue with code generation for GAP Central role connection parameters. Their values were always generated as default.
2.0	Added the Bluetooth® BR/EDR support for 20xxx devices (Beta version). Added the General and Service Discovery Settings tabs for 20xxx devices. Changed the user configuration storage location. Previously the configuration was stored in the header file as a comment in XML format. Now it is stored in the *.cybt file in XML format. Added Custom OTA Firmware Upgrade Service for 20xxx devices. Minor changes in the generated code for 20xxx devices: 'u' suffix not added to unsigned integer values. Changed Bluetooth® LE Stack RAM memory allocation (PSoC 6 devices). Changed the names of the advertisement packet defines (PSoC 6 devices). Before: CY_BLE_ADV_PKT_<INDEX>_INDEX<NAME>; After: CY_BLE_ADV_PKT_<INDEX>_INDEX_<NAME>. Added New, Close, Import, Export, and Reset View commands. User interface details were improved. Removed the functionality to launch the Bluetooth® Configurator from the Device Configurator.
2.1	Added menu Edit with two items Undo/Redo. Fixed minor issues in the representation of the GATT-profiles properties. Modified the default selection of the GATT-characteristic permissions behavior for 20xxx devices.
2.20	Added the PSoC 6 MCU with 43xxx Connectivity support. Added Copy feature to the Notice List. Fixed issues in the HID report editor. Fixed issues in the Advertisement packet editor. Improved validation of fields. Removed the Profile role Weight Scale and Collector from the Add Profiles menu.
2.21	Added a General tab for 43xxx devices. Added a possibility to disable the GATT database for 43xxx devices. Added new parameters for 43xxx devices: Maximum remote servers and clients connections, and Maximum attribute length. Changed the maximum limit of the MTU Size parameter from 512 to 517 for 43xxx devices. Fixed the issue with the CY_BT_L2CAP_MTU_SIZE value for 43xxx devices. In case when L2CAP logical channels were disabled, the default value generated for this define was 23 instead of 512 if the configurator's output files were generated by the build script (not GUI itself). Fixed the issue that the Peripheral GAP role was restored after the configurator reopening even when previously removed (43xxx devices). Advertisement packet configuration: in case when the GATT Settings tab is disabled, the GATT services configured previously on the GATT Setting tab are not available for selection for the Advertisement packet Service UUID and Service Data AD types. The configurations with characteristics of length 0 produced empty arrays in the generated code for 20xxx and 43xxx devices. This could cause build warnings on some compilers. Added an extra '0' element to the empty arrays to avoid that. Removed duplicated CY_BT_HIGH_DUTY_CONN_SCAN_WINDOW define.

Version changes

Version	Change description
	<p>GAP scan connection parameters: removed possibility to disable Connection interval minimum/maximum and Connection supervision timeout.</p> <p>GAP scan interval settings for 43xxx: corrected values of the following defines: CY_BT_HIGH_DUTY_SCAN_DURATION, CY_BT_LOW_DUTY_SCAN_DURATION, CY_BT_HIGH_DUTY_CONN_SCAN_DURATION, CY_BT_LOW_DUTY_CONN_SCAN_DURATION.</p> <p>When the GAP role is non-connectable (Broadcaster or Observer), the server_max_links field in the wiced_bt_cfg_settings struct is set to 0 instead of 1.</p>
2.30	<p>Added characteristic permissions validation for 43xxx devices.</p> <p>Removed the command-line generate options: -g and --generate.</p> <p>Configurations with HID service without the Report characteristics produced an empty array in the generated code for Bluetooth MCU. Changed the generated code to avoid that.</p>
2.40	<p>Added support of the BTSTACK 3.0 library.</p> <p>Added the Security level parameter for 43xxx devices.</p> <p>Added the possibility to generate a random Device address based on the PC's MAC address.</p> <p>For Bluetooth MCU, fixed minor inconsistencies in the generated code between bt-configurator and bt-configurator-cli executables.</p> <p>43xxx devices: wiced_bt_cfg_settings struct uses a device name declared in cycfg_gatt_db.h (app_gap_device_name) instead of cy_bt_device_name. cy_bt_device_name is obsolete. Added '\0' at the end of app_gap_device_name initialization.</p> <p>43xxx devices: modified the initialization value for the .max_simultaneous_links field of the wiced_bt_cfg_settings struct from 3 to (CY_BT_CLIENT_MAX_LINKS + CY_BT_SERVER_MAX_LINKS).</p> <p>Added cleanup of the generated source files before saving new files in order to remove not relevant files.</p>
2.50	<p>Added support for CYW20829 and CYW5557x devices.</p> <p>Renamed the existing device options.</p> <p>Added a new parameter RX PDU size on the General LE tab, which is used to initialize ble_max_rx_pdu_size field for BTSTACK 3.0 or above.</p> <p>Improved the HID Report editor: for Input, Output, and Feature items added a drop-down with the options.</p> <p>Removed the CCCD descriptor for those HID Report characteristics where it's not required.</p> <p>When the HID service is present, added possibility to add the External Report Reference descriptor to any characteristic in the profile.</p> <p>The GATT DB attribute handles in the generated code formatted as 16-bit values.</p> <p>Removed: the migration of configuration to the current XML format – configuration saved in the comments in generated HEADER files (the old method).</p>
2.60	<p>Added support for multi-advertisement.</p> <p>Renamed terms according to the “Appropriate Language Mapping Tables” by Bluetooth® SIG.</p>
2.70	<p>The PSoC™ Bluetooth® LE only Legacy Stack (PSoC™ 63) library support starts being deprecated.</p>

Revision history**Revision history**

Revision	Date	Description
**	2018-11-12	New document.
*A	2019-02-26	Updated to version 1.1.
*B	2019-10-16	Updated to version 2.0.
*C	2020-03-27	Updated to version 2.1.
*D	2020-04-13	Updated a screen capture and corrected a sentence.
*E	2020-09-01	Updated to version 2.20.
*F	2020-12-14	Updated to version 2.21.
*G	2021-03-12	Updated to version 2.30.
*H	2021-04-26	Updated to version 2.40.
*I	2021-09-29	Updated to version 2.50.
*J	2022-09-29	Updated to version 2.60.
*K	2022-10-12	Added Multi-advertisement feature description.
*L	2023-03-02	Updated to version 2.70.

Trademarks

All referenced product or service names and trademarks are the property of their respective owners.

Edition 2023-03-02

Published by

Infineon Technologies AG

81726 Munich, Germany

© 2023 Infineon Technologies AG.

All Rights Reserved.

Do you have a question about this document?

www.cypress.com/support

Document reference

002-25279 Rev. *L

IMPORTANT NOTICE

The information given in this document shall in no event be regarded as a guarantee of conditions or characteristics ("Beschaffheitsgarantie").

With respect to any examples, hints or any typical values stated herein and/or any information regarding the application of the product, Infineon Technologies hereby disclaims any and all warranties and liabilities of any kind, including without limitation warranties of non-infringement of intellectual property rights of any third party.

In addition, any information given in this document is subject to customer's compliance with its obligations stated in this document and any applicable legal requirements, norms and standards concerning customer's products and any use of the product of Infineon Technologies in customer's applications.

The data contained in this document is exclusively intended for technically trained staff. It is the responsibility of customer's technical departments to evaluate the suitability of the product for the intended application and the completeness of the product information given in this document with respect to such application.

For further information on the product, technology, delivery terms and conditions and prices please contact your nearest Infineon Technologies office (www.infineon.com).

WARNINGS

Due to technical requirements products may contain dangerous substances. For information on the types in question please contact your nearest Infineon Technologies office.

Except as otherwise explicitly approved by Infineon Technologies in a written document signed by authorized representatives of Infineon Technologies, Infineon Technologies' products may not be used in any applications where a failure of the product or any consequences of the use thereof can reasonably be expected to result in personal injury.