



**Please note that Cypress is an Infineon Technologies Company.**

The document following this cover page is marked as “Cypress” document as this is the company that originally developed the product. Please note that Infineon will continue to offer the product to new and existing customers as part of the Infineon product portfolio.

**Continuity of document content**

The fact that Infineon offers the following product as part of the Infineon product portfolio does not lead to any changes to this document. Future revisions will occur when appropriate, and any changes will be set out on the document history page.

**Continuity of ordering part numbers**

Infineon continues to support existing part numbers. Please continue to use the ordering part numbers listed in the datasheet for ordering.



THIS SPEC IS OBSOLETE

Spec No: 002-08682

Spec Title: MB39C811-EVBSK-02 ENERGY HARVESTING WITH  
BLUETOOTH(R) SMART BEACON STARTER KIT  
OPERATION GUIDE

Replaced by: NONE



MB39C811-EVBSK-02

## Energy Harvesting with Bluetooth® Smart Beacon Starter Kit Operation Guide

Doc. No. 002-08682 Rev. \*C

Cypress Semiconductor  
198 Champion Court  
San Jose, CA 95134-1709  
<http://www.cypress.com>

## Copyrights

© Cypress Semiconductor Corporation, 2014-2019. This document is the property of Cypress Semiconductor Corporation and its subsidiaries, including Spansion LLC ("Cypress"). This document, including any software or firmware included or referenced in this document ("Software"), is owned by Cypress under the intellectual property laws and treaties of the United States and other countries worldwide. Cypress reserves all rights under such laws and treaties and does not, except as specifically stated in this paragraph, grant any license under its patents, copyrights, trademarks, or other intellectual property rights. If the Software is not accompanied by a license agreement and you do not otherwise have a written agreement with Cypress governing the use of the Software, then Cypress hereby grants you a personal, non-exclusive, nontransferable license (without the right to sublicense) (1) under its copyright rights in the Software (a) for Software provided in source code form, to modify and reproduce the Software solely for use with Cypress hardware products, only internally within your organization, and (b) to distribute the Software in binary code form externally to end users (either directly or indirectly through resellers and distributors), solely for use on Cypress hardware product units, and (2) under those claims of Cypress's patents that are infringed by the Software (as provided by Cypress, unmodified) to make, use, distribute, and import the Software solely for use with Cypress hardware products. Any other use, reproduction, modification, translation, or compilation of the Software is prohibited.

TO THE EXTENT PERMITTED BY APPLICABLE LAW, CYPRESS MAKES NO WARRANTY OF ANY KIND, EXPRESS OR IMPLIED, WITH REGARD TO THIS DOCUMENT OR ANY SOFTWARE OR ACCOMPANYING HARDWARE, INCLUDING, BUT NOT LIMITED TO, THE IMPLIED WARRANTIES OF MERCHANTABILITY AND FITNESS FOR A PARTICULAR PURPOSE. No computing device can be absolutely secure. Therefore, despite security measures implemented in Cypress hardware or software products, Cypress does not assume any liability arising out of any security breach, such as unauthorized access to or use of a Cypress product. In addition, the products described in these materials may contain design defects or errors known as errata which may cause the product to deviate from published specifications. To the extent permitted by applicable law, Cypress reserves the right to make changes to this document without further notice. Cypress does not assume any liability arising out of the application or use of any product or circuit described in this document. Any information provided in this document, including any sample design information or programming code, is provided only for reference purposes. It is the responsibility of the user of this document to properly design, program, and test the functionality and safety of any application made of this information and any resulting product. Cypress products are not designed, intended, or authorized for use as critical components in systems designed or intended for the operation of weapons, weapons systems, nuclear installations, life-support devices or systems, other medical devices or systems (including resuscitation equipment and surgical implants), pollution control or hazardous substances management, or other uses where the failure of the device or system could cause personal injury, death, or property damage ("Unintended Uses"). A critical component is any component of a device or system whose failure to perform can be reasonably expected to cause the failure of the device or system, or to affect its safety or effectiveness. Cypress is not liable, in whole or in part, and you shall and hereby do release Cypress from any claim, damage, or other liability arising from or related to all Unintended Uses of Cypress products. You shall indemnify and hold Cypress harmless from and against all claims, costs, damages, and other liabilities, including claims for personal injury or death, arising from or related to any Unintended Uses of Cypress products.

Cypress, the Cypress logo, Spansion, the Spansion logo, and combinations thereof, WICED, PSoC, CapSense, EZ-USB, F-RAM, and Traveo are trademarks or registered trademarks of Cypress in the United States and other countries. For a more complete list of Cypress trademarks, visit [cypress.com](http://cypress.com). Other names and brands may be claimed as property of their respective owners.

# Preface



This manual explains how to use the Starter Kit. Be sure to read this manual before using the product. For mass production/evaluation PMICs for this product, consult with sales representatives or support representatives..

## **Handling and use**

Handling and use of this product and notes regarding its safe use are described in the manuals for products bundled with the Starter Kit.

Follow the instructions in the manuals to use this product.

Keep this manual at hand so that you can refer to it anytime during use of this product.

## **Notice on this document**

All information included in this document is current as of the date it is issued. Such information is subject to change without any prior notice.

Please confirm the latest relevant information with the sales representatives.

# Cautions



## Caution of the products described in this document

The following precautions apply to the product described in this manual.

<b>WARNING</b>	Indicates a potentially hazardous situation which could result in death or serious injury and/or a fault in the user's system if the product is not used correctly.
<b>Electric shock, Damage</b>	Before performing any operation described in this manual, turn off all the power supplies to the system. Performing such an operation with the power on may cause an electric shock or device fault.
<b>Electric shock, Damage</b>	Once the product has been turned on, do not touch any metal part of it. Doing so may cause an electric shock or device fault.
<b>CAUTION</b>	Indicates the presence of a hazard that may cause a minor or moderate injury, damages to this product or devices connected to it, or may cause to lose software resources and other properties such as data, if the device is not used appropriately.
<b>Cuts, Damage</b>	Before moving the product, be sure to turn off all the power supplies and unplug the cables. Watch your step when carrying the product. Do not use the product in an unstable location such as a place exposed to strong vibration or a sloping surface. Doing so may cause the product to fall, resulting in an injury or fault.
<b>Cuts</b>	The product contains sharp edges that are left unavoidably exposed, such as jumper plugs. Handle the product with due care not to get injured with such pointed parts.
<b>Damage</b>	Do not place anything on the product or expose the product to physical shocks. Do not carry the product after the power has been turned on. Doing so may cause a malfunction due to overloading or shock.
<b>Damage</b>	Since the product contains many electronic components, keep it away from direct sunlight, high temperature, and high humidity to prevent condensation. Do not use or store the product where it is exposed to much dust or a strong magnetic or electric field for an extended period of time. Inappropriate operating or storage environments may cause a fault.
<b>Damage</b>	Use the product within the ranges given in the specifications. Operation over the specified ranges may cause a fault.
<b>Damage</b>	To prevent electrostatic breakdown, do not let your finger or other object come into contact with the metal parts of any of the connectors. Before handling the product, touch a metal object (such as a door knob) to discharge any static electricity from your body.

<b>Damage</b>	When turning the power on or off, follow the relevant procedure as described in this document. Before turning the power on, in particular, be sure to finish making all the required connections. Furthermore, be sure to configure and use the product by following the instructions given in this document. Using the product incorrectly or inappropriately may cause a fault.
<b>Damage</b>	Always turn the power off before connecting or disconnecting any cables from the product. When unplugging a cable, unplug the cable by holding the connector part without pulling on the cable itself. Pulling the cable itself or bending it may expose or disconnect the cable core, resulting in a fault.
<b>Damage</b>	Because the product has no casing, it is recommended that it be stored in the original packaging. Transporting the product may cause a damage or fault. Therefore, keep the packaging materials and use them when re-shipping the product.

# Contents



<b>1. Description</b>	<b>7</b>
<b>2. Features</b>	<b>8</b>
<b>3. Applications</b>	<b>9</b>
<b>4. Setup</b>	<b>10</b>
4.1 Contents in a package	10
4.2 Preparation	10
4.2.1 Preparation of Receiver	11
4.2.2 Setup of Receiving (iPhone or Smart Phone etc...)	11
4.3 Other	12
4.3.1 Method of Rewriting Beacon IDs	12
<b>5. Specification of Energy Harvesting PMIC (MB39C811)</b>	<b>19</b>
5.1 Recommended Operating Conditions	19
5.2 DC Characteristics	20
5.3 Block Diagram	21
<b>6. Specification of Starter Kit</b>	<b>22</b>
6.1 Layout of the Board	22
6.2 Input/Output Pin Description	23
6.3 Switch Description	24
6.4 Jumper Description	25
6.5 Circuit	26
6.6 BOM List	27
6.7 Layout	28
7.1 State Change Diagram of Sample Software	30
<b>8. Programming and Debug</b>	<b>32</b>
8.1 Structure of Files	32
8.2 Programming and executing using JTAG Debugger	33
8.2.1 Example for JTAG Converter Cable	33
8.2.2 KEIL integrated development tool (MDK-ARM)	34
<b>9. Appendix</b>	<b>37</b>
9.1 Assemble Case	37
<b>10. Ordering Information</b>	<b>39</b>
<b>Revision History</b>	<b>40</b>
Document Revision History	40

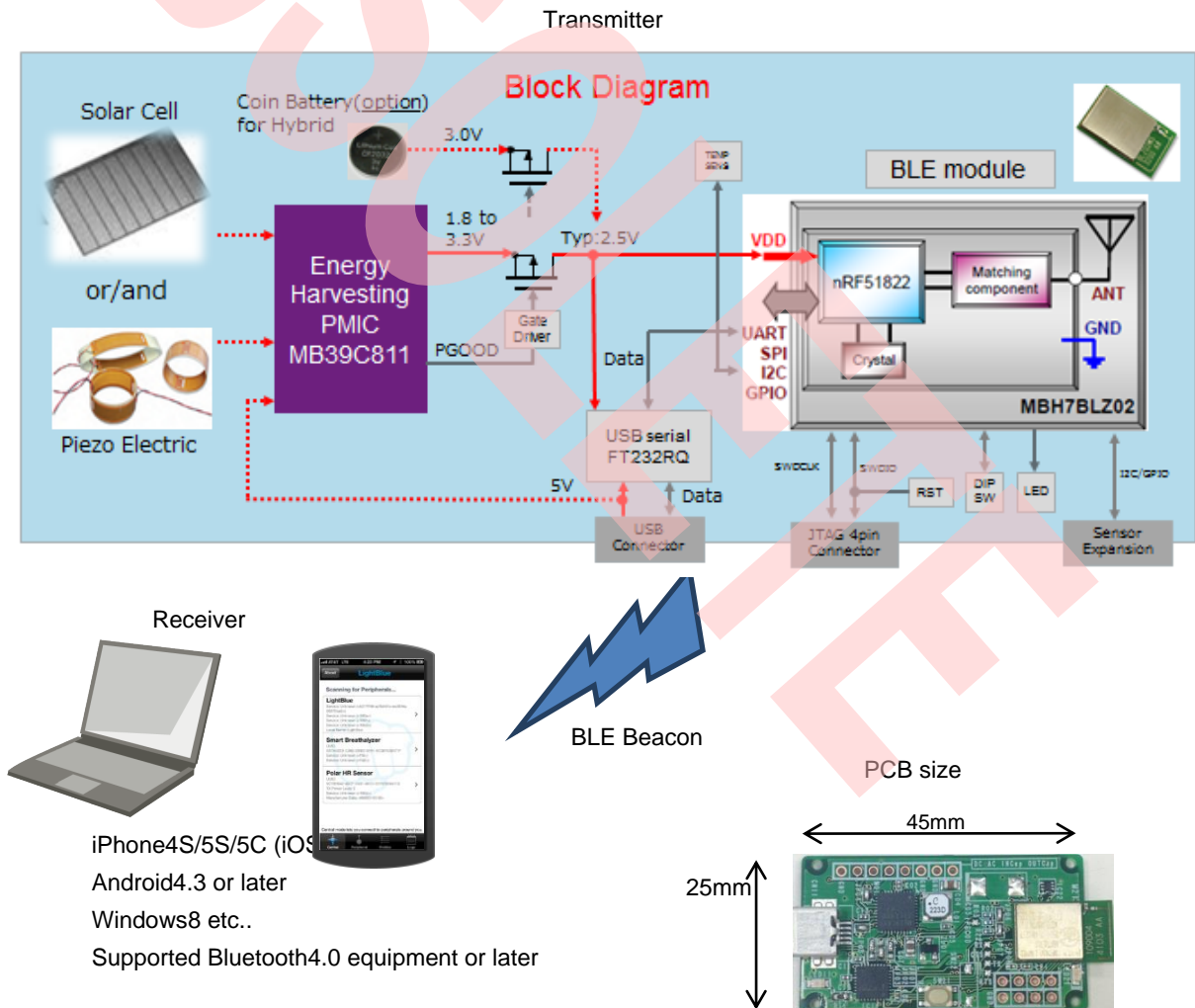


# 1. Description



The MB39C811-EVBSK-02 is an evaluation board that contains Energy Harvesting Power Management IC, MB39C811 (Buck DC/DC converter) with Bluetooth® Smart (Low Energy), which can be used in application on the Solar and Piezoelectric Energy Harvester. The MB39C811 has a wide input range from 4V up to 23V, and the output voltages are selectable from 1.5V to 5V. The board contains a Programmable (application block only) Bluetooth® Smart module, Cypress Component: MBH7BLZ02-109004, which allows BLE (Bluetooth Low Energy) Beacon and wireless data communications.

Figure 1-1. Diagram of the Starter Kit



## 2. Features



- Installed Energy Harvesting Power Management IC: MB39C811
- Programmable (application block only) Bluetooth® Smart Module: MBH7BLZ02-109004(\*1)
- Transmit BLE Beacon using Solar energy and Vibration energy only
- Transmit about 1 second intervals under 500lx
- Support a lot of energy inputs
  - ☐ - Solar Cell
  - ☐ - Piezo Electric
  - ☐ - USB Bus Power
  - ☐ - Coin Battery (Expandable: For Hybrid)
  - ☐ - NFC: Near Field Communication (Expandable: Power supply only)
  - ☐ - Commercial Power Supply: AC85~265V (Expandable: Need additional resister)
- Installed Temperature Sensor
- Installed USB Serial Converter IC for changing Beacon IDs
- Attached Solar Cell for Evaluation
- Attached Case & USB Cable
- Schematic, BOM List, Layout Data, Sample Software
- Installed Expandable Terminal.
  - ☐ - Reset Button for MCU (Standard mount)
  - ☐ - JTAG Connector for MCU Program
  - ☐ - Expandable Sensor Interface (I2C/GPIO)
  - ☐ - DIPSW (Expandable)
  - ☐ - LED (Expandable)
- Small Size PCB: 45mmx25mm

\*1 Need the "Software Development Kit (SDK)" of Nordic semiconductor to program the software.  
To get SDK on WEB site of Nordic semiconductor, use "Product Key" including in this starter Kit.

## 3. Applications



- Battery-less BLE Beacon
- AC Power supply BLE Beacon
- Wireless Sensor node for IoT
- BEMS/HEMS/FEMS
- Active RFID
- Solar Energy Harvesting
- Wireless Illumination Control
- Wireless HVAC Sensors
- Security System

## 4. Setup

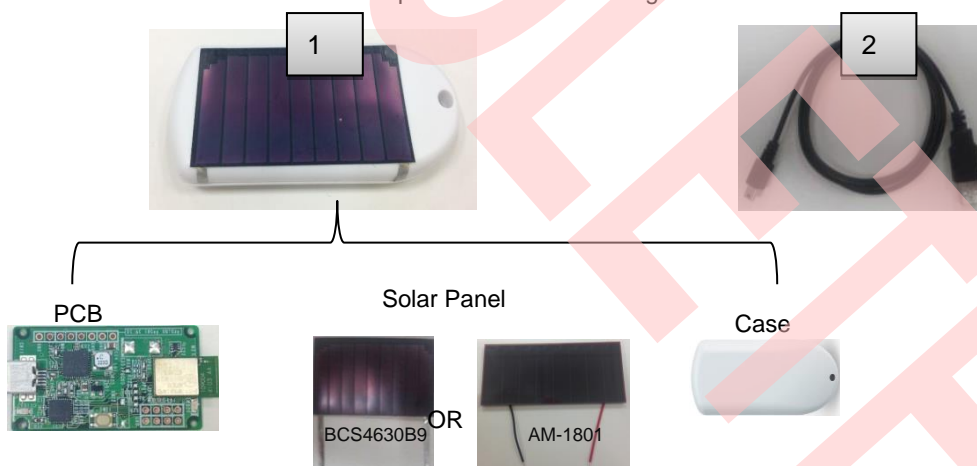


### 4.1 Contents in a package

No.	Contents		Description	Qty	Note
1	MB39C811-EVBSK-02(*1)	PCB	Energy Harvesting with BLE Board	1	Installed
		Solar Panel (*2)	TDK: BCS4630B9 or Panasonic: AM-1801	1	Installed either one
		Case	TAKACHI: PS-65	1	Installed
2	USB Cable		USB Mini Converter Cable	1	

\*1 : Check the radio law of each country to use it. Please access to Cypress Component about detail of BLE module.

\*2 : The solar panel is sample for operation check. It isn't guaranteed the electrical characteristics, etc. Please be careful because the solar panel doesn't have the guard film of surface.



### 4.2 Preparation

Requirement for preparation

- MB39C811-EVBSK-02 Starter Kit 1set
- iPhone4S/5 etc. (iOS7 or later), Android4.3 or later 1device

#### 4.2.1 Preparation of Receiver

1. Place a MB39C811-EVBSK-02 under office light about 500lx.
2. After placing, the Beacon packet is transmitted automatically. Regarding to receiver data, please refer to next step.



Place under office light about 500lx

#### 4.2.2 Setup of Receiving (iPhone or Smart Phone etc...)

**Note :**

Need supported Bluetooth v4.0 equipment which is iOS7 or Android 4.3 or later, to check operation.

1. The default setting is following.

- UUID 11111111-1111-1111-1111-111111111111
- Major 1
- Minor 1
- TX power 4dBm
- RSSI -61dBm
- Advertise interval 100ms
- Bluetooth company 0x0059 (Nordic Semiconductor ASA)

2. Set the Bluetooth setting to "ON" on your equipment.

3. Check the BLE Beacon operation using an application. The following are example of application for iOS and Android.

For iOS, install either following application on App Store.

- Beacon ©BeaconSandwich
- eBeacon ©Jaalee Inc
- LightBlue ©Punch Through Design LLC
- Particle Detector ©KS Technologies LLC

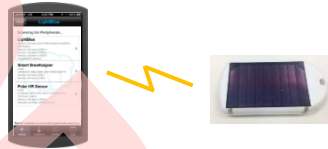
For Android, install either following application on Play Store.

- iBeacon Detector ©youten
- iBeacon Finder ©Mobisfera
- iBeacon Scanner ©ixsoft, inc.
- iBeacon Maps ©Hint Solutions

4. After installed, execute these applications.

5. Set "Proximity UUID", "Major", "Minor" while refer the default setting. To learn detail, refer to the operation manual for each application.

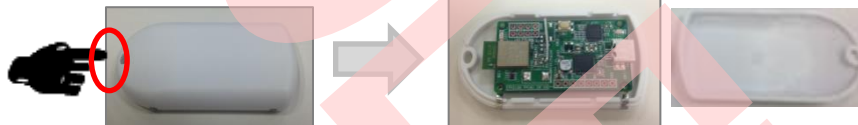
6. The set of receiving will be finished when can check BLE beacon data on an application.
  - If can't check the data, retry checking as shown in below.
  - Check Bluetooth setting on your equipment
  - Check "Proximity UUID", "Major" and "Minor" on an application.
  - If use iOS8 equipment or later, it can't occasionally receive BLE data, otherwise "Bluetooth Company" is 0x004C (Apple, Inc.). Refer to "4.3.1 Method of Rewriting Beacon IDs" to change "Bluetooth Company" to 0x004C.
  - Restart your receiver equipment.



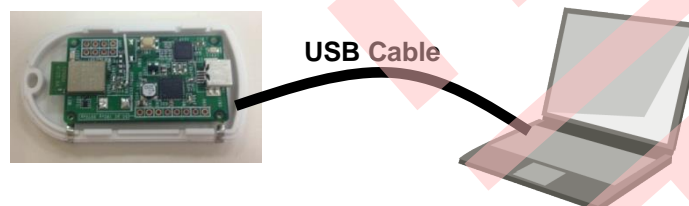
## 4.3 Other

### 4.3.1 Method of Rewriting Beacon IDs

1. Prepare attached USB mini converter cable, MB39C811-EVBSK-02 and PC for rewriting ID.
2. Install a serial communication tool named "Tera Term" and so on.
3. Download the driver for "USB serial converter IC (FT232RL)", and then defreeze it to any directory on PC.  
 FTDI maker website (FT232 Driver is available)  
<http://www.ftdichip.com/>
4. Open the case of MB39C811-EVBSK-02. Insert your fingernail to case, then open case.



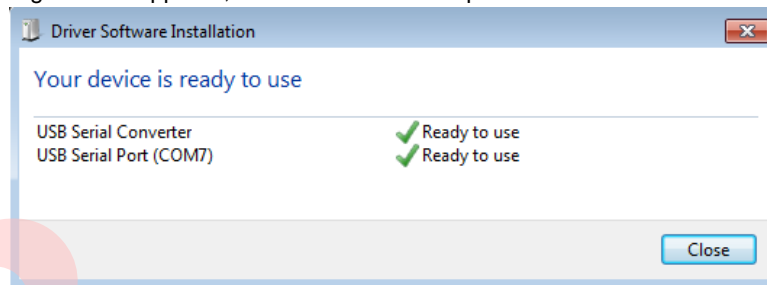
5. Connect USB cable both PC and MB39C811-EVBSK-02 board. There is no problem that connect USB cable while a solar cell is connected.



6. The driver Installation starts automatically and the message window will pop appear.

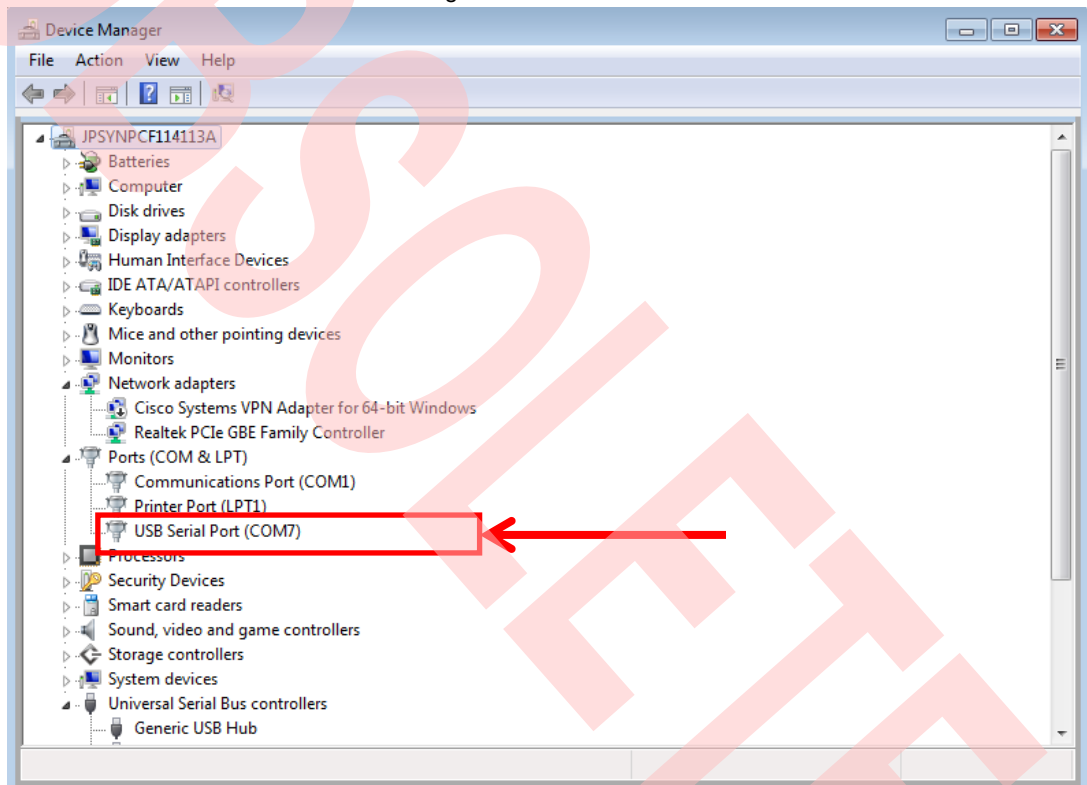


7. When the following window appears, the installation is completed.



8. After the device driver installation, make sure that new COM port was added in the Windows Device Manager.

Start Menu > Control Panel> Device Manager



9. Execute installed serial communication tool.  
(Operation check information: Windows7 SP1 32bit, Tera Term Version 4.74)
10. Select USB serial port (COMxx) that was added in the Windows Device Manager.
11. The setting of a serial communication tool is following.

Menu>Setup>Serial Port...

Baud rate : 9600  
 Data : 8 bit  
 Parity : none  
 Stop : 1 bit  
 Flow control : none

Menu>Setup>Terminal...

New-line

Receive : AUTO  
 Transmit : CR+LF  
 Local echo : Check  
 Other : Default

12. Push a MCU reset button. At this time, the mode is changed to ID rewriting mode, and then stop the BLE Beacon transmitter.



MCU Reset Button

13. The "Start..." message is appeared on a serial communication tool window, and then changes to the command waiting mode. The detail of a serial command is following.

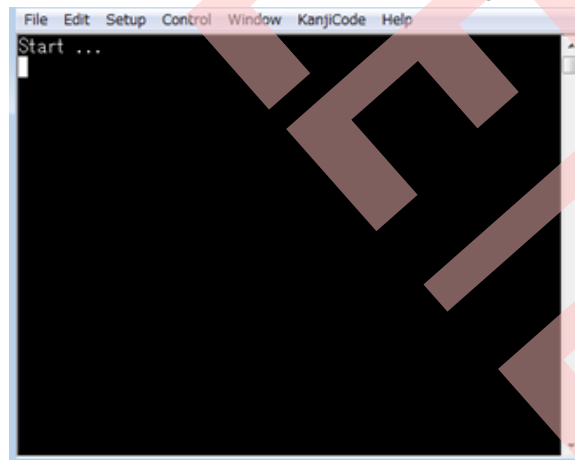




Table 4-1. Commands List

No.	Commands Name	Description	Default
[1]	UUID	Read/Write of UUID	11111111-1111-1111-1111-111111111111 [hex]
[2]	MAJOR	Read/Write of MAJOR	0x0001
[3]	MINOR	Read/Write of MINOR	0x0001
[4]	TXPWR	Read/Write of Transmitter Power Strength	+4 dBm
[5]	RSSI	Read/Write of Receiver Power Strength for distance 1m (RSSI)	-61 dBm
[6]	ITRVL	Read/Write of Advertise Interval	100ms
[7]	COID	Read/Write of Bluetooth Company	0x0059 (Nordic Semiconductor ASA)
[8]	ERASE	Default parameters	-
[9]	EXIT	Finish the command waiting mode, and then retransmit the BLE Beacon data	-
[10]	VER	Display Firmware Version	-

#### [1] Read/Write of UUID

##### [1-1] Read

Read UUID data. Default: 11111111-1111-1111-1111-111111111111

<Example>

UUID ↵

(echo) UUID

(output) -> UUID: 11111111-1111-1111-1111-111111111111

##### [1-2] Write

Write UUID data.

<Example>

UUID EEEEEDDD-CCCC-BBBB-AAAA-999988887777 ↵

(echo) UUID EEEEEDDD-CCCC-BBBB-AAAA-999988887777

(output) -> New UUID: EEEEEDDD-CCCC-BBBB-AAAA-999988887777

#### [2] Read/Write of MAJOR

##### [2-1] Read

Read MAJOR. Default: 0x0001

<Example>

MAJOR ↵

(echo) MAJOR

(output) -> MAJOR: 0001

[2-2] Write  
Write MAJOR.

<Example>

MAJOR 1A2F ↵                      <- Input HEX data  
(echo) MAJOR 1A2F  
(output) -> New MAJOR: 1A2F

[3] Read/Write of MINOR

[3-1] Read

Read MINOR.                      Default: 0x0001

<Example>

MINOR ↵  
(echo) MINOR  
(output) -> MINOR: 0001

[3-2] Write

Write MINOR.

<Example>

MINOR 2C3D ↵                      <- Input HEX data  
(echo) MINOR 2C3D  
(output) -> New MINOR: 2C3D

[4] Read/Write of Transmitter Power Strength

[4-1] Read

Read Power Strength. Default: +4dBm

<Example>

TXPWR ↵  
(echo) TXPWR  
(output) -> TX power in dBm: 4

[4-2] Write

Set Power Strength. Set Value: -40, -30, -20, -16, -12, -8, -4, 0, 4

<Example>

TXPWR -40 ↵  
(echo) TXPWR -40  
(output) -> New TX power in dBm: -40

[5] Read/Write of Receiver Power Strength for distance 1m (RSSI)

[5-1] Read

Read RSSI. Default: -61dBm

<Example>

RSSI↵

(echo) RSSI

(output) -> RSSI in dBm: -61

[5-2] Write

Set RSSI.

<Example>

RSSI -90↵

(echo) RSSI -90

(output) -> New RSSI in dBm: -90

[6] Read/Write of Advertise Interval

[6-1] Read

Read Advertise Interval. Default: 100ms

<Example>

ITRVL↵

(echo) ITRVL

(output) -> Advertise Interval in msec: 100

[6-2] Write

Set Advertise Interval. Set Value: 100~10240 ms

<Example>

ITRVL 10240↵

(echo) ITRVL 10240

(output) -> New Advertise Interval in msec: 10240

[7] Read/Write of Bluetooth Company

[7-1] Read

Read Bluetooth Company. Default: 0x0059 (Nordic Semiconductor ASA)

<Example>

COID↵

(echo) COID

(output) ->Company ID: 0059

[7-2] Write

Write Bluetooth Company.

<Example>

COID004C↵ <- Input HEX data

(echo) COID004C

(output) -> New Company ID: 004C

**[8] ERASE**

Erase the flash memory in MCU. After erase, all value will be default parameters.

<Example>

ERASE↵

(echo) ERASE

(output) Erase completed!

**[9] EXIT**

Finish the command waiting mode, and then retransmit the BLE Beacon data.

<Example>

EXIT↵

(echo) EXIT

(output) ---

**[10] VER**

Display Firmware Version.

<Example>

VER↵

(echo) VER

(output) -> MB39C811-EVBSK-02 Sample Firmware, Version 1.0

[\*]Input another command (Error Handling)

TEST

(echo) TEST

(output) Command format error!!

14. Enter "EXIT" command when all settings are finished, and then retransmit the BLE Beacon data.  
The changed IDs are transmitted by solar energy when disconnect the USB cable.

## 5. Specification of Energy Harvesting PMIC (MB39C811)



The following is the specification of Energy Harvesting Power Management IC (MB39C811) on this starter kit. Regarding to newest information, refer to the datasheet of MB39C811 (DS405-00013).

### 5.1 Recommended Operating Conditions

Figure 5-1. Recommended Operating Conditions

Parameter	Symbol	Condition	Value			Unit
			Min	Typ	Max	
VIN pin input voltage	VVIN	VIN pin	2.6	-	23	V
AC pin input voltage	VPV	AC1_1 pin, AC1_2 pin, AC2_1 pin, AC2_2 pin	-	-	23	V
Input voltage	VSI	S0 pin, S1 pin, S2 pin	0	-	VVB (*1)	V
	VFB	VOOUT pin	0	-	5.5	V
Operating ambient temperature	Ta	-	-40	-	+85	°C

\*1 : Output Voltage for internal circuit

## 5.2 DC Characteristics

Table 5-1. DC Characteristics

(Ta= -40°C to +85 °C, VVIN=7.0 V, L1=22 µH, C2=47 µF)

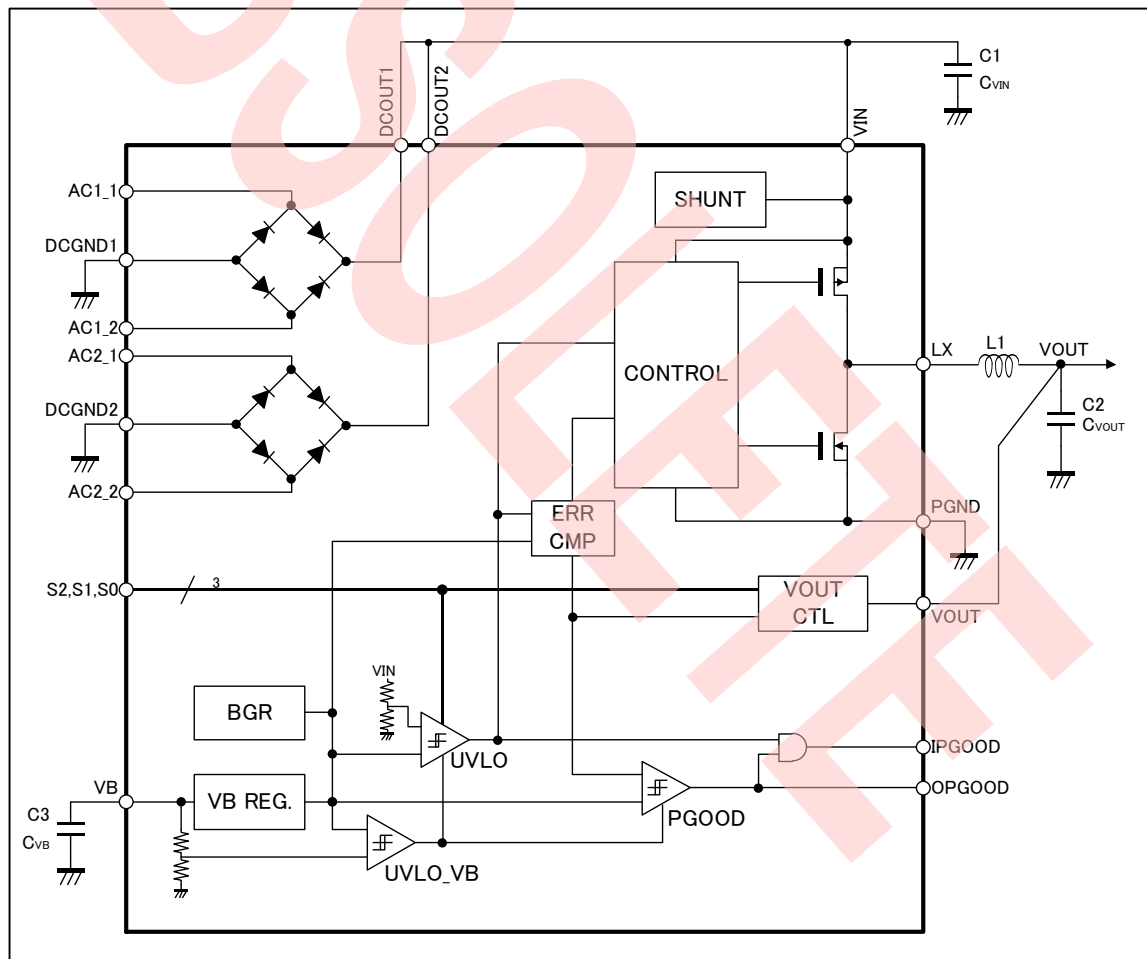
Parameter	Symbol	Condition	Value			Unit
			Min	Typ	Max	
Quiescent current	IVIN	VVIN = 2.5 V (UVLO), Ta = + 25 °C	-	550	775	nA
		VVIN = 4.5 V (sleep mode), Ta = + 25 °C	-	1.5	2.25	µA
		VVIN = 18 V (sleep mode), Ta = + 25 °C	-	1.9	2.85	µA
Preset output voltage	VVOUT	S2 = L, S1 = L, S0 = L IOUT = 1mA	1.457	1.5	1.544	V
		S2 = L, S1 = L, S0 = H IOUT = 1mA	1.748	1.8	1.852	V
		S2 = L, S1 = H, S0 = L IOUT = 1mA	2.428	2.5	2.573	V
		S2 = L, S1 = H, S0 = H IOUT = 1mA	3.214	3.3	3.386	V
		S2 = H, S1 = L, S0 = L IOUT = 1mA	3.506	3.6	3.694	V
		S2 = H, S1 = L, S0 = H IOUT = 1mA	3.993	4.1	4.207	V
		S2 = H, S1 = H, S0 = L IOUT = 1mA	4.383	4.5	4.617	V
		S2 = H, S1 = H, S0 = H IOUT = 1mA	4.870	5.0	5.130	V
Peak switching current	IPEAK	-	200	250	400	mA
Maximum Output current	IOUTMAX	Ta=25°C	100	-	-	mA
UVLO release voltage (Input Power-Good detection voltage)	VUVLOH	S2 = L, S1 = L, S0 = L	3.8	4.0	4.2	V
		S2 = L, S1 = L, S0 = H				
		S2 = L, S1 = H, S0 = L				
		S2 = L, S1 = H, S0 = H	4.94	5.2	5.46	V
		S2 = H, S1 = L, S0 = L				
		S2 = H, S1 = L, S0 = H	6.84	7.2	7.56	V
		S2 = H, S1 = H, S0 = L				
UVLO detection voltage (Input Power-Good reset voltage)	VUVLOL	S2 = L, S1 = L, S0 = L	2.6	2.8	3.0	V
		S2 = L, S1 = L, S0 = H				
		S2 = L, S1 = H, S0 = L				
		S2 = L, S1 = H, S0 = H	3.8	4.0	4.2	V
		S2 = H, S1 = L, S0 = L				
		S2 = H, S1 = L, S0 = H	5.7	6.0	6.3	V
		S2 = H, S1 = H, S0 = L				
VIN pin shunt voltage	VSHUNT	-	19	21	23	V

Parameter	Symbol	Condition	Value			Unit
			Min	Typ	Max	
VIN pin shunt current	ISHUNT	-	100	-	-	mA
Output Power-Good detection voltage (Rising)	VOPGH	To preset voltage ratio	90	94	98	%
Output Power-Good reset voltage (Falling)	VOPGL	To preset voltage ratio	65.5	70	74.5	%
Power supply output voltage for internal circuit	VVB	VVIN = 6 V to 20 V	-	5.0 <sup>+</sup>	-	V

\*: This parameter is not be specified. This should be used as a reference to support designing the circuits.

### 5.3 Block Diagram

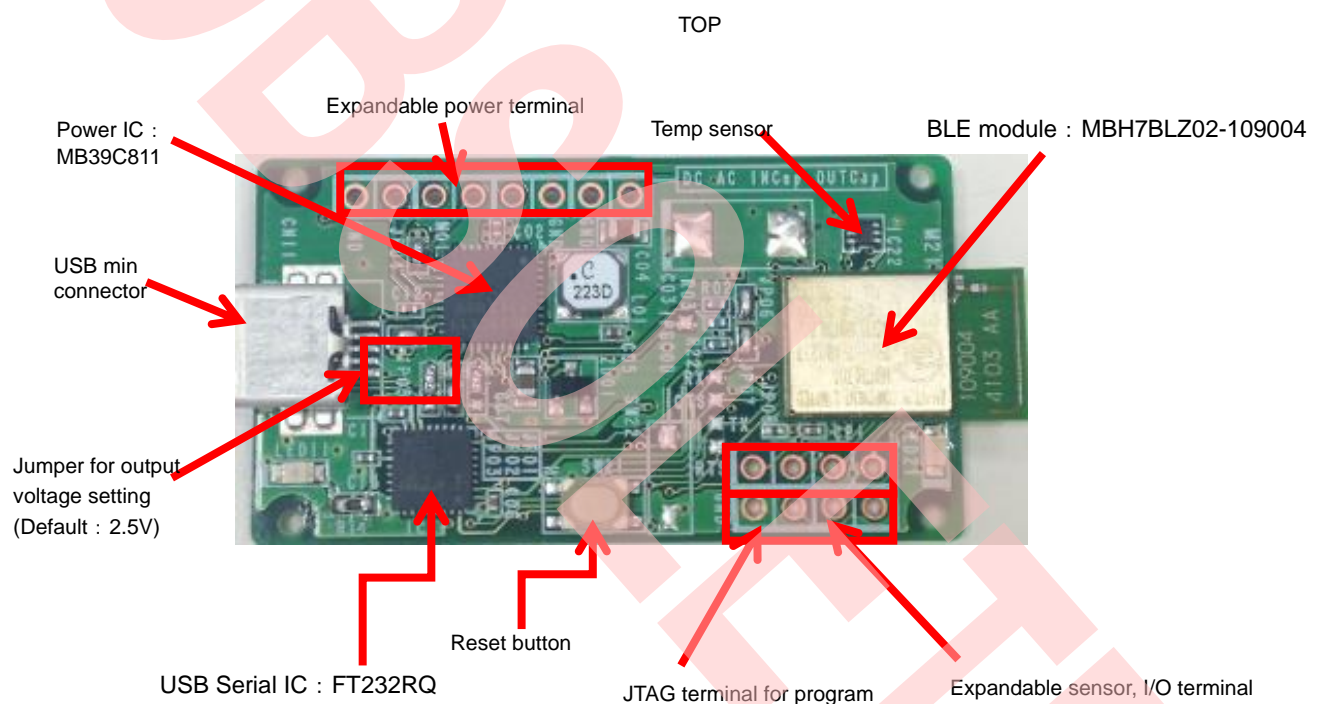
Figure 5-2. Block Diagram



## 6. Specification of Starter Kit



### 6.1 Layout of the Board

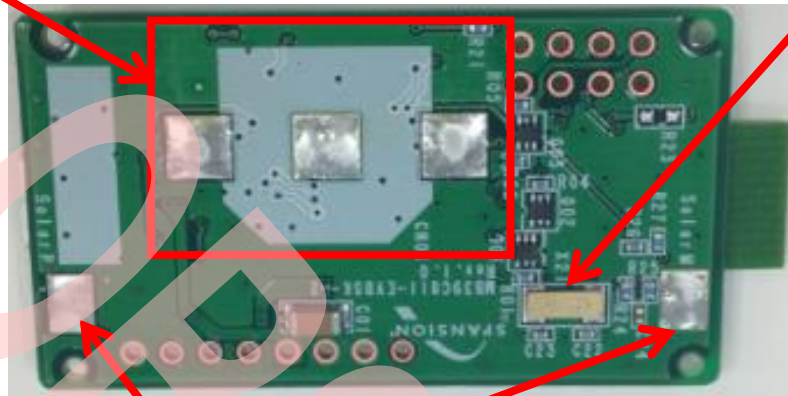




**BOTTOM**

 Expandable coin battery folder  
 (For Hybrid)

Real Time Clock



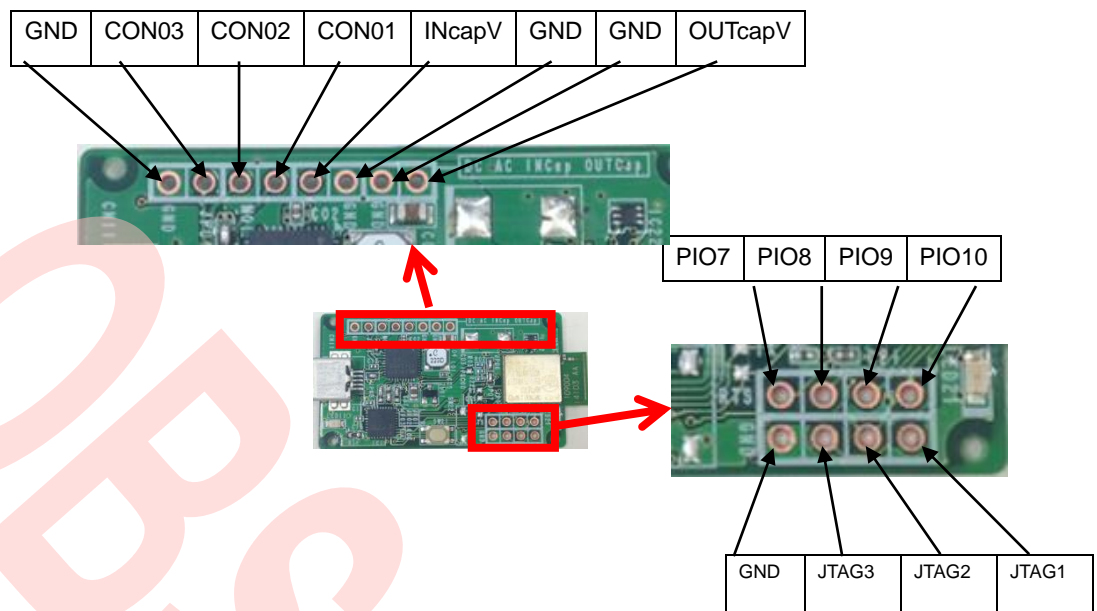
Land for TDK Solar Cell (BCS4630B9)

## 6.2 Input/Output Pin Description

Table 6-1. Input/Output Pin Description

Circuit Pin No.	Silk-Printed Name	I/O	Description
CN001	AC	I	Bridge Rectifier1 AC input pin1
CN002		I	Bridge Rectifier1 AC input pin2
CN003	DC	I	Solar Cell Input (Inputting to either SolarP or CN003)
AC2_G	GND	-	GNDpin
SolarP	SolarP	I	Input TDK Solar Cell (Inputting to either SolarP or CN003)
SolarN	SolarN	-	GND pin for TDK Solar Cell
INCapV	INcap	-	Expandable input capacitor +pin
INCapG	GND	-	Expandable input capacitor -pin
OUTCapV	OUTcap	-	Expandable output capacitor +pin
OUTCapG	GND	-	Expandable output capacitor -pin
PIO7	-	I/O	GPIO_7 of BLE module
PIO8	-	I/O	GPIO_8 of BLE module
PIO9	-	I/O	GPIO_9 of BLE module
PIO10	-	I/O	GPIO_10 of BLE module
JTAG1	-	-	Power Pin for JTAG
JTAG2	-	-	SWDIO pin of BLE module
JTAG3	-	-	SWDCLK pin of BLE module
JTAG4	GND	-	GND pin for JTAG

Detail of Input/Output Pin



### 6.3 Switch Description

Table 6-2. Switch Description

Circuit Pin No.	Silk-Printed Name	Description
SW21	SW21	Reset Button for BLE module
SW22	SW22 (No mounted)	Expandable DIPSW

## 6.4 Jumper Description

Table 6-3. Jumper Description

Circuit Pin No.	Description	Default Settings
JP01(*2)	Output Voltage Setting Switching H/L for S0 Pin of MB39C811	L (*1)
JP02(*2)	Output Voltage Setting Switching H/L for S1 Pin of MB39C811	H(*1)
JP03(*2)	Output Voltage Setting Switching H/L for S2 Pin of MB39C811	L(*1)
JP04	Bridge Rectifier1 Select "Open" or "Short" Open : DC Output Pin (DCOUT1) Short : DC Power Input Pin (VIN)	Short(*1)
JP05	Bridge Rectifier2 Select "Open" or "Short" Open : DC Output Pin (DCOUT2) Short : DC Power Input Pin (VIN)	Short(*1)
JP06	Connect the MB39C811 output and Load	Short(*1)
JP07	Connect the Coin battery and Load	Open(*1)

\*1: Set "Open/Short" and "H/L" by soldering.

\*2: Set the output voltage from the "Table 6-4 Output Voltage Setting". The default value is 2.5V.

Table 6-4. Output Voltage Setting

JP03 (S2 pin)	JP02 (S1 pin)	JP01 (S0 pin)	Preset Output Voltage [V]	Note
L	L	L	1.5	Do not use(*1)
L	L	H	1.8	
L	H	L	2.5	Default
L	H	H	3.3	
H	L	L	3.6	
H	L	H	4.1	Do not use(*1)
H	L	L	4.5	Do not use(*1)
H	H	H	5.0	Do not use(*1)

\*1: Do not use these voltages setting, because BLE module voltage is from 1.8V to 3.6V.

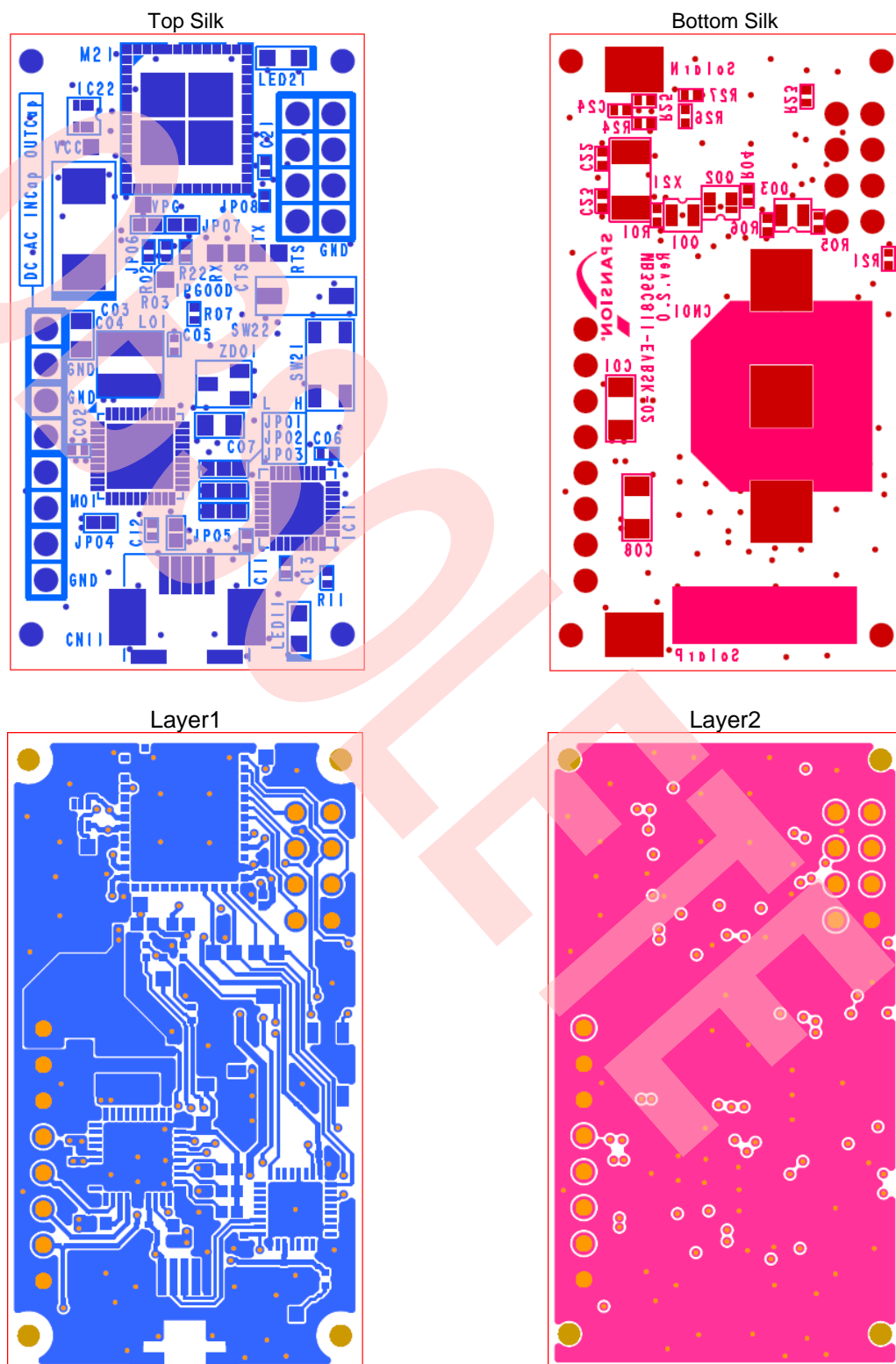


## 6.6 BOM List

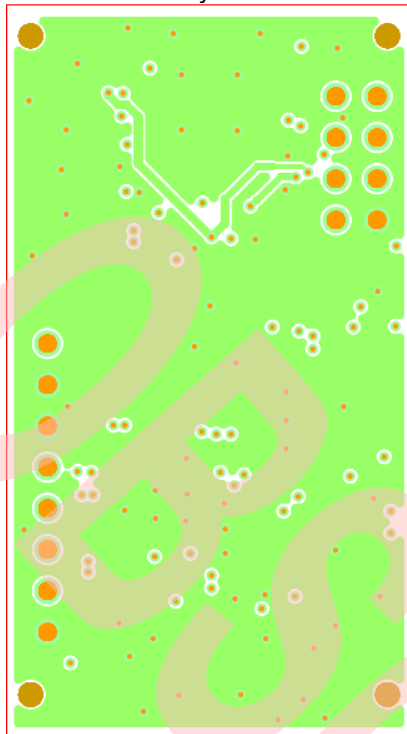
Table 6-5. BOM List

No	Qty	Reference	Parts Number	Description	Manufacture	Note
1	1	C01	C3216X5R1E226MT	22 $\mu$ F/25V	TDK	
2	4	C06 C11 C21 C24	C1005JB1H104K	0.1 $\mu$ F/50V	TDK	
3	1	C04	C2012X5R1A226M	22 $\mu$ F/10V	TDK	
4	1	C07	C2012JB1C475K	4.7 $\mu$ F/16V	TDK	
5	1	C08	C3216X5R1E476M160A C	47 $\mu$ F/25V	TDK	
6	-	C02 C03 C05	Non mount	-	-	Non mount
7	2	C12 C13	C1005JB1C105K	1 $\mu$ F/16V	TDK	
8	2	C22 C23	C1005CH1H100J	10pF/50V	TDK	
9	-	CN01	Non mount	-	-	Non mount
10	1	CN11	UX60SC-MB-5ST	USB mini connector	Hirose	
11	1	IC11	FT232RQ	USB serial converter	FTDI	
12	1	IC22	TMP102	Temperature sensor	TI	
13	1	L01	LPS4018-223MLB	22 $\mu$ H	Coilcraft	
14	1	LED11	HSMG-C170	LED Green	Avago	
15	-	LED21	Non mount	-	-	Non mount
16	1	M01	MB39C811	Energy Harvesting PMIC	Cypress	
17	1	M21	MBH7BLZ02-109004	Bluetooth LE module	Cypress Component	
18	3	Q01 Q02 Q03	EM6M2	Nch+Pch MOSFET	ROHM	
19	5	R01 R03 R04 R05 R06	RK73H1ETTD1004F	1M $\Omega$	KOA	
20	-	R02 R22 R23	Non mount	-	-	Non mount
21	1	R07	RK73H1ETTD000	0 $\Omega$	KOA	
22	1	R27	RK73H1ETTD1003F	100k $\Omega$	KOA	
23	2	R24 R25	RK73H1ETTD2201F	2.2k $\Omega$	KOA	
24	1	R11	RK73H1ETTD1001F	1k $\Omega$	KOA	
25	1	R21	RK73H1ETTD1000F	100 $\Omega$	KOA	
26	1	R26	RK73H1ETTD3302F	33k $\Omega$	KOA	
27	1	SW21	SKRSPACE010	Push Switch	ALPS	
28	-	SW22	Non mount	-	-	Non mount
29	1	X21	ABS10-32.768kHz	32.768k X'tal	ABRACON	
30	1	ZD01	PLVA662A	Voltage regulator diode	NXP	

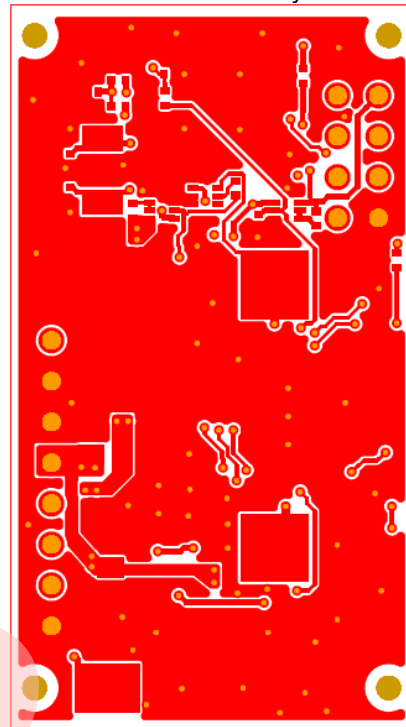
## 6.7 Layout



Layer3



Layer4



## 7. Sample Software for BLE Beacon



### 7.1 State Change Diagram of Sample Software

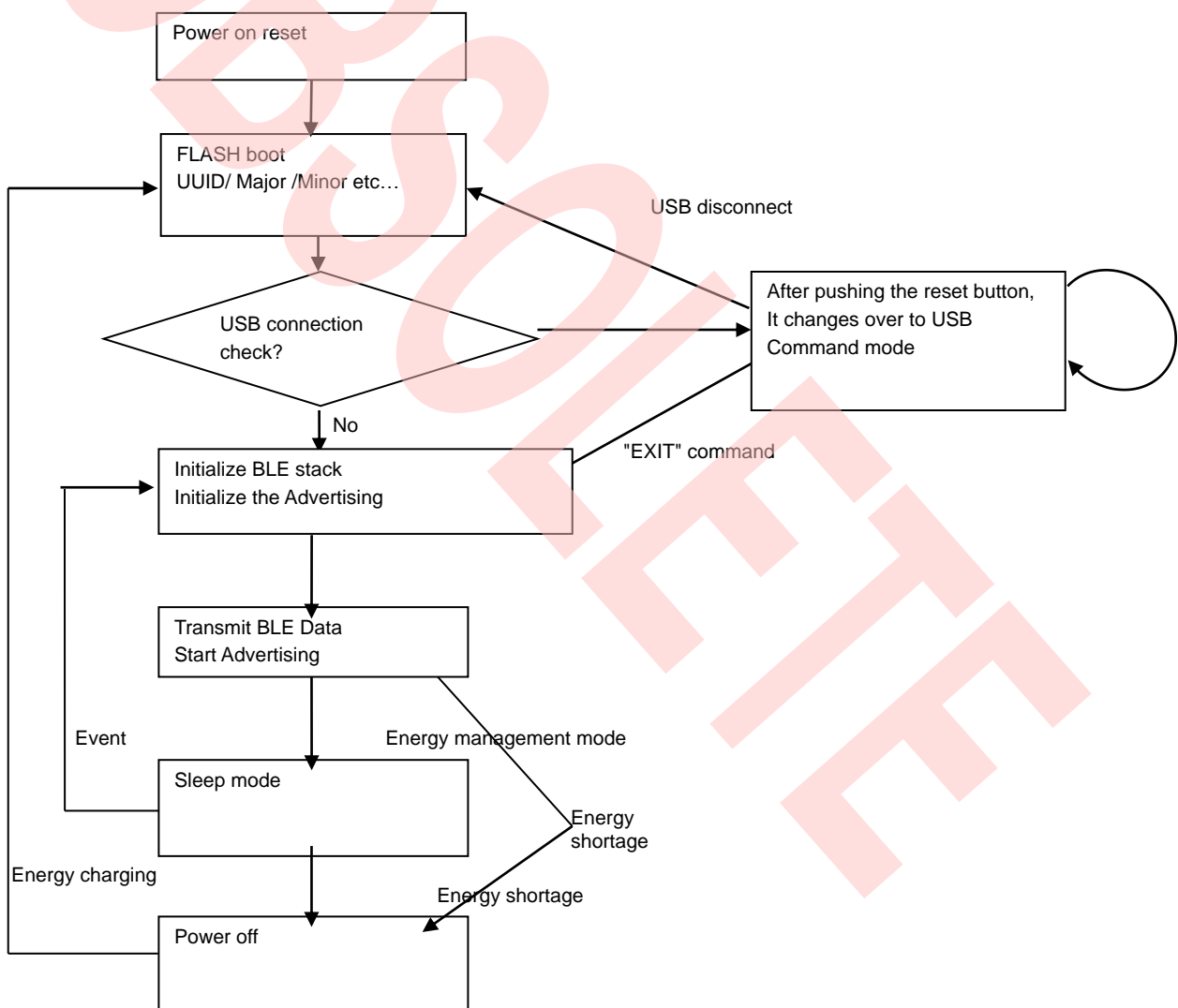




Table 6-6. Flow of sample software

No.	Items	Contents	Data branch
1	Initial	Power on reset	-
2	Boot	Initialize the ports of FLASH Read the data of BLE beacon from FLASH	-
3	Mode select	Checking the USB cable PIO19 of BLE module (H: connect, L: disconnect)	L: disconnect-> No.4 H: connect-> No.8
4	BLE setting	Initialize the BLE stack Initialize the Advertising Start the Advertising	-
5	Energy management	After transmitting the BLE beacon packets, it changes over to sleep mode. It will turn off the power by the power gating when it is in energy shortage in capacitance	Energy shortage ->No.6 Enough energy ->No.7
6	Energy charging	After turning off the power, it changes over to the charging process After finishing the charging process, it is turned on by the power gating again	After this, repeat No.1~No.6
7	Sleep <-> Transmit	Transmit the BLE beacon data by the value of Advertising interval setting Repeat this process during enough energy.	-
8	USB command mode	After resetting MCU, wait the USB command It changes over to BLE setting when inputted the "EXIT" command	Change over to No.4 by "EXIT" command

## 8. Programming and Debug



### 8.1 Structure of Files

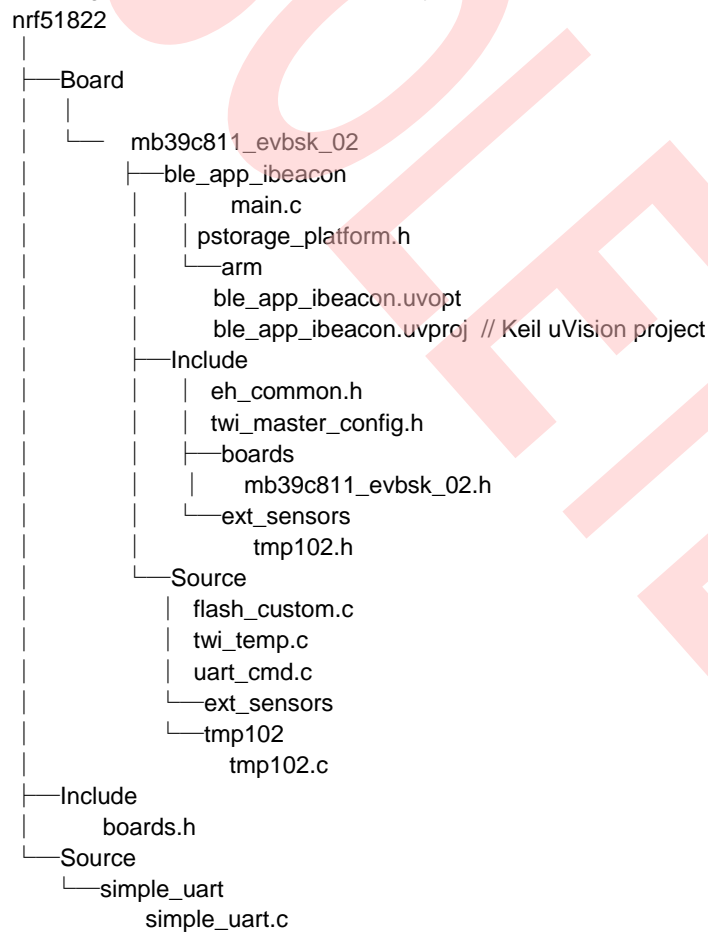
This program is made based on the "Software Development Kit (SDK)" of Nordic Semiconductor. It is including only difference information of SDK. To get SDK on WEB site of Nordic semiconductor, use "Product Key" including in this starter kit.

The following is structure of files for this project. Overwrite all files on SDK's folder of Nordic semiconductor. It is based on nRF51 SDK v.6.0.0.

**Note:**

Don't rewrite "Soft Device (S110)" provided from WEB of Nordic Semiconductor.

If rewrote it, must re-get the radio law of each country.



## 8.2 Programming and executing using JTAG Debugger

Requirement for preparation

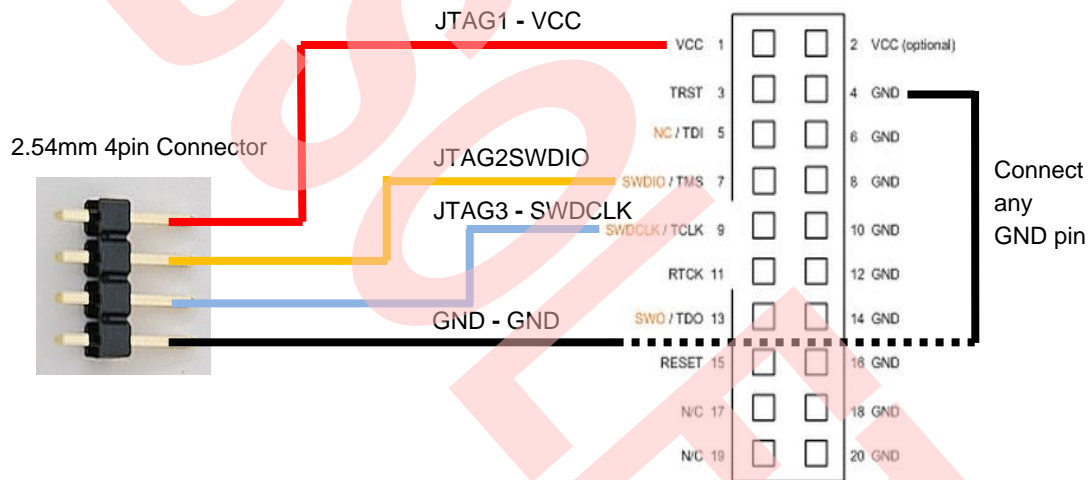
- MB39C811-EVBSK-02Board (accessory) 1pcs
- USB Mini Converter Cable (accessory) 1pcs
- PC which is installed the KEIL integrated development tool (MDK-ARM) 1pcs  
<https://www.keil.com/>
- ICE for ARM programming (Recommend SEGGERJ-Link series) 1pcs  
<http://www.segger.com/jlink-debug-probes.html>
- JTAG Converter Cable (Need making yourself) 1pcs

**Note:**

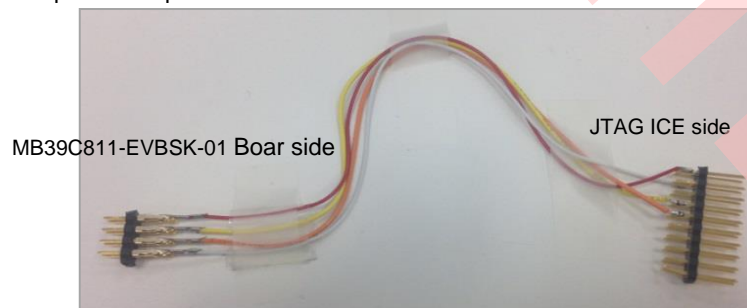
The following is example for JTAG Converter Cable. Regarding to making cable, please make sure self-responsibility.

### 8.2.1 Example for JTAG Converter Cable

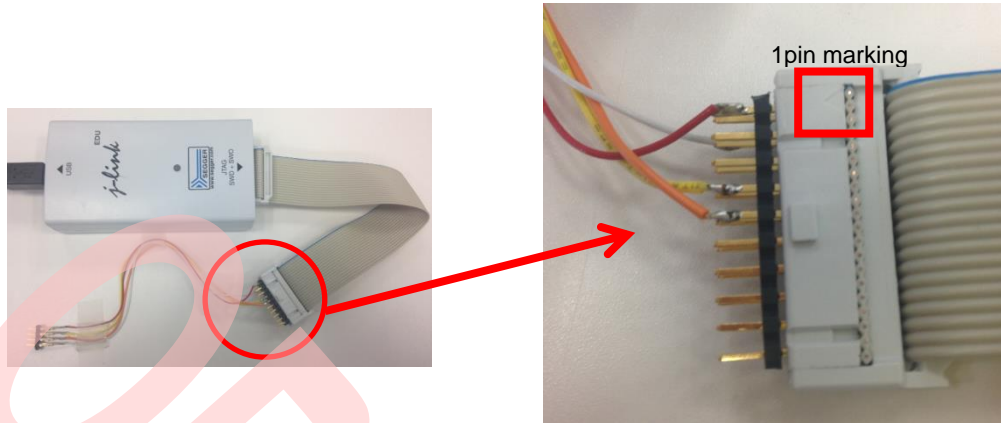
1. Make the JTAG Converter Cable as shown in below. It is example of ARM Standard 20pin JTAG.



2. Example of completed cable as shown in below.



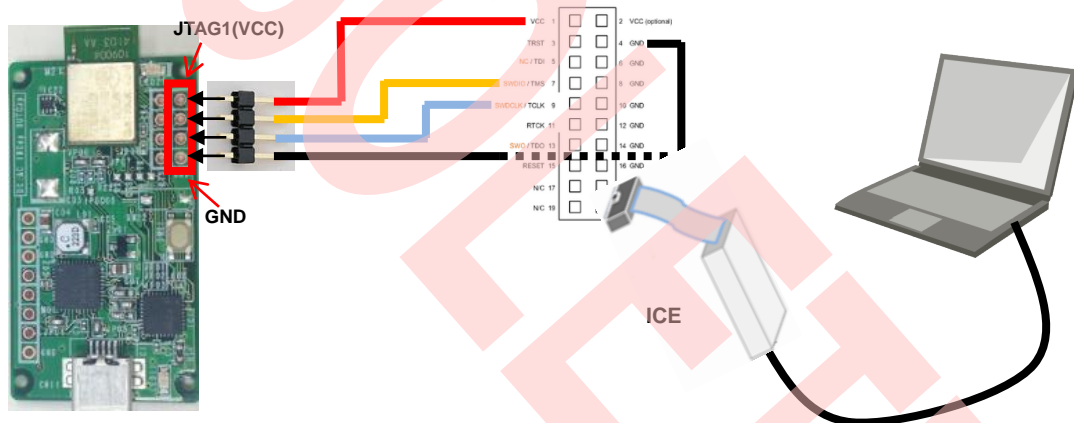
3. Connect to the ICE for ARM programming. Please be careful of 1pin position.



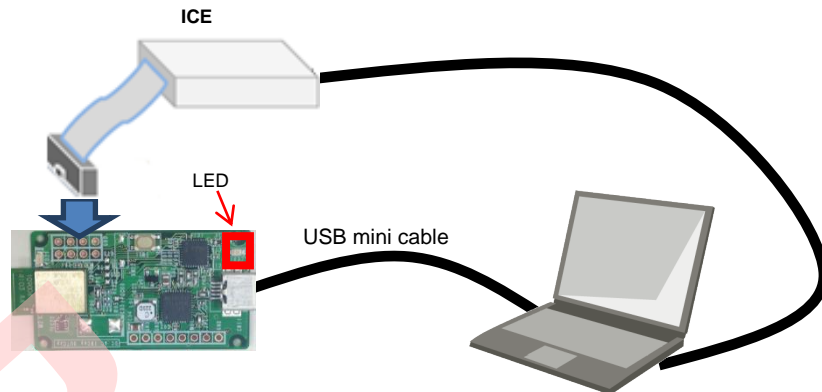
That's the end of making JTAG Converter Cable.

## 8.2.2 KEIL integrated development tool (MDK-ARM)

1. Install MDK-ARM on your PC at first,
2. Install SDK of Nordic semiconductor, as shown in "8.1 Structure of Files".
3. Connect JTAG Cable which made by "8.2.1 Example for JTAG Converter Cable". To touch JTAG Cable to the land of board, connect it little slanted.

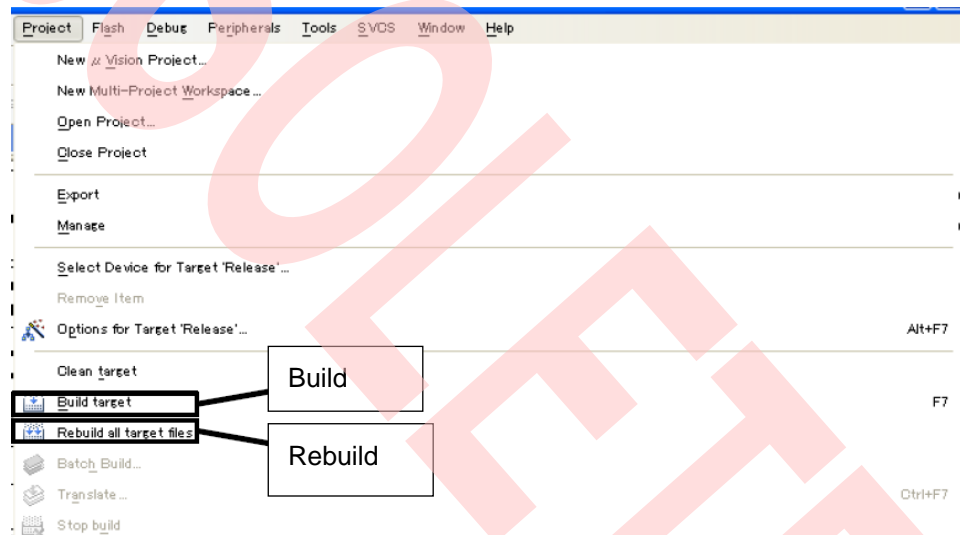


4. Connect the USB Mini Converter Cable to PC. At this time, the LED on board will be bright as shown in below.



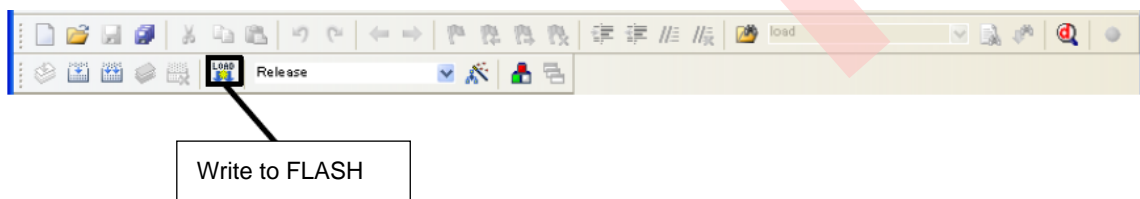
5. KEIL integrated development tool is opened when you execute the "xxxxxxx.uvproj" file in ARM folder, nrf51822\Board\mb39c811\_evbsk\_02\ble\_app\_ibeacon\arm\ble\_app\_ibeacon.uvproj and then the program is built when click the "Build target" or "Rebuild all target files" on "Project".

Figure 8-1. Build target



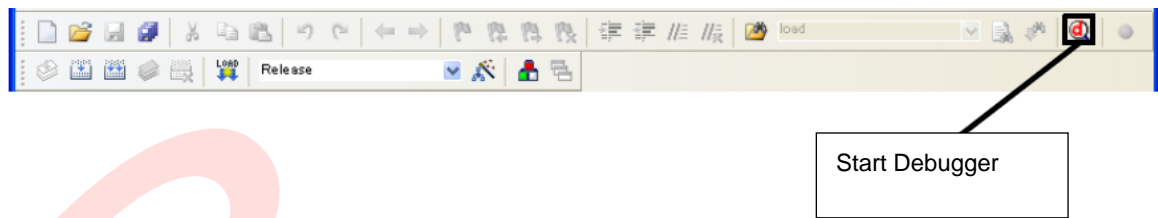
6. Write to FLASH and execute the program. To write the program to FLASH, push "LOAD" button, as shown in Figure 8-2.

Figure 8-2. Write to FLASH



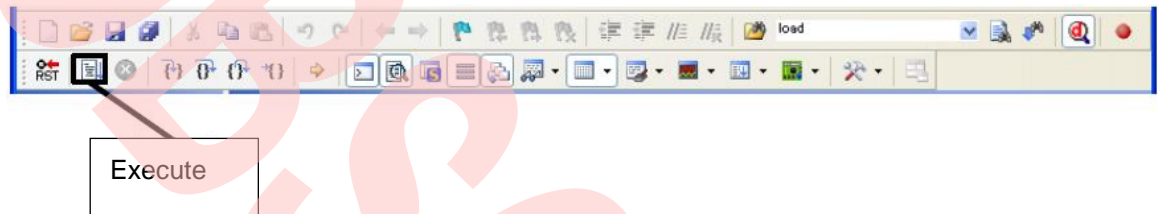
The debugger starts by clicking "d" button as shown in below.

Figure 8-3. Start Debugger



To execute the program, push "execute" button after start debugger, as shown in Figure 8-4.

Figure 8-4. Execute the program



That's the end of programming by KEIL integrated development tool.

## 9. Appendix

### 9.1 Assemble Case

**Notes:**

- The following step is already finished by initial packing. Please use it as reference information.
- Show the method of assemble case about TDK: BCS4630B9 only.

Figure 9-1. Picture of completion case



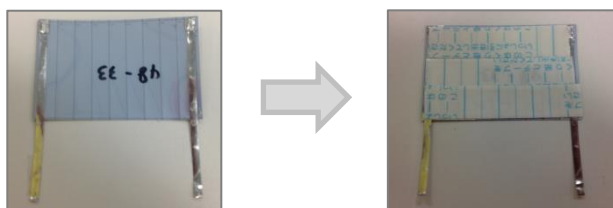
**Requirement for preparation:**

- MB39C811-EVBSK-02 Starter Kit 1set
- Soldering iron, Solder (For connecting solar cell to board) 1set
- Double sided tape (For putting solar cell on case) 1device

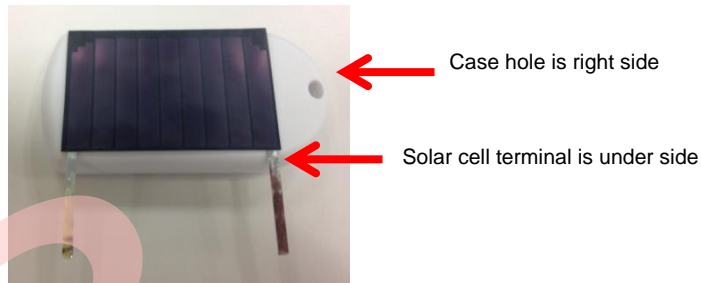
1. Prepare a case (TAKACHI: PS-65) and Solar Cell (TDK: BCS4630B9)
2. Bring the flat surface of case to top.



3. Put a double sided tape on solar cell of other side.



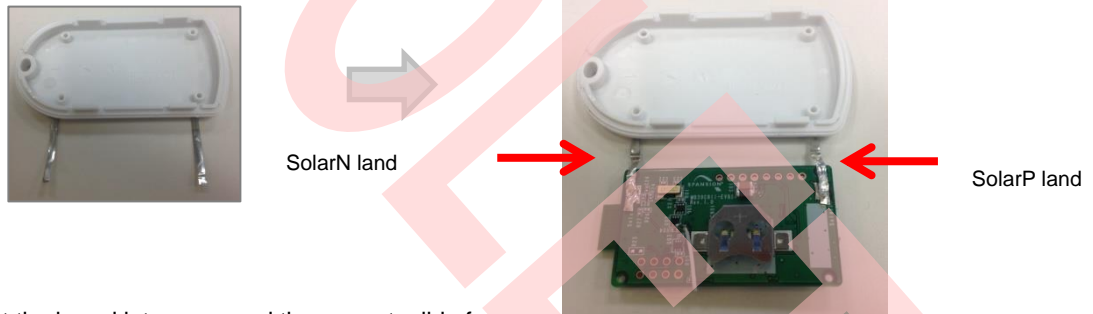
4. Put a solar cell to the flat surface of case. Please be careful about direction.



5. Remove a lid of case.



6. Bring putted solar cell to other side, and then connect it to SolarP/SolarN land on MB39C811-EVBSK-02 board using soldering iron.



7. Put the board into case, and then revert a lid of case.  
If need to fix the board to case, please use "TAKACHI: EM-1.6 (sold separately)" and so on. However it is 2 fixing holes only.



That's the end of the Assemble case.



## 10. Ordering Information



Table 10-1. Ordering Information

Part number	Version	Note
MB39C811-EVBSK-02	Rev 1.0	

# Revision History



## Document Revision History

Document Title: MB39C811-EVBSK-02 Energy Harvesting with Bluetooth® Smart Beacon Starter Kit Operation Guide			
Document Number: 002-08682			
Revision	Issue Date	Origin of Change	Description of Change
**	11/10/2014	MITK	Revision 1: Initial release
			Revision 2: Changed from "Bluetooth Low Energy" to "Bluetooth® Smart (Low Energy)". Section 1 "Description" - Modified the description of BLE module
			Section 2 "Features" - Modified the description of BLE module and Note.
			Section 4.1 "Contents in a package" - Added the solar cell of Panasonic:AM-1801
			Section 4.2.2 "Setup of Receiving" - Modified some recommended Application and Added the method of rechecking.
			Section 4.3.1 "Method of Rewriting Beacon IDs" - Added "Table4-1 Commands List" and Added "[7] Read/Write of Bluetooth company"
			Section 8.1 "Structure of Files" - Modified the description ,Added the Note and added "pstorage_platform.h" file
			Section 9.1 "Assemble Case"- Added the Note
*A	02/11/2016	MITK	Migrated Spansion Guide from MB39C811-EVBSK-02_SS901-00028-2v0-E to Cypress format
*B	04/26/2017	SHEA	Updated logo and copyright
*C	01/25/2019	SSAS	Obsoleted.