

## KIT\_XMC1400\_DC\_V1 Kit user manual

### XMC1400 Drive Card V1 .0

#### About this document

##### Scope and purpose

This document describes how to use the XMC1400 Drive Card for motor control application. It demonstrates the motor control features of the XMC1402 device including the toolchain.

##### Intended audience

This document is intended for anyone using the XMC1400 MCU family.

---

Important notice

## Important notice

**“Evaluation Boards and Reference Boards” shall mean products embedded on a printed circuit board (PCB) for demonstration and/or evaluation purposes, which include, without limitation, demonstration, reference and evaluation boards, kits and design (collectively referred to as “Reference Board”).**

**Environmental conditions have been considered in the design of the Evaluation Boards and Reference Boards provided by Infineon Technologies. The design of the Evaluation Boards and Reference Boards has been tested by Infineon Technologies only as described in this document. The design is not qualified in terms of safety requirements, manufacturing and operation over the entire operating temperature range or lifetime.**

**The Evaluation Boards and Reference Boards provided by Infineon Technologies are subject to functional testing only under typical load conditions. Evaluation Boards and Reference Boards are not subject to the same procedures as regular products regarding returned material analysis (RMA), process change notification (PCN) and product discontinuation (PD).**

**Evaluation Boards and Reference Boards are not commercialized products, and are solely intended for evaluation and testing purposes. In particular, they shall not be used for reliability testing or production. The Evaluation Boards and Reference Boards may therefore not comply with CE or similar standards (including but not limited to the EMC Directive 2004/EC/108 and the EMC Act) and may not fulfill other requirements of the country in which they are operated by the customer. The customer shall ensure that all Evaluation Boards and Reference Boards will be handled in a way which is compliant with the relevant requirements and standards of the country in which they are operated.**

**The Evaluation Boards and Reference Boards as well as the information provided in this document are addressed only to qualified and skilled technical staff, for laboratory usage, and shall be used and managed according to the terms and conditions set forth in this document and in other related documentation supplied with the respective Evaluation Board or Reference Board.**

**It is the responsibility of the customer’s technical departments to evaluate the suitability of the Evaluation Boards and Reference Boards for the intended application, and to evaluate the completeness and correctness of the information provided in this document with respect to such application.**

**The customer is obliged to ensure that the use of the Evaluation Boards and Reference Boards does not cause any harm to persons or third party property.**

**The Evaluation Boards and Reference Boards and any information in this document is provided "as is" and Infineon Technologies disclaims any warranties, express or implied, including but not limited to warranties of non-infringement of third party rights and implied warranties of fitness for any purpose, or for merchantability.**

**Infineon Technologies shall not be responsible for any damages resulting from the use of the Evaluation Boards and Reference Boards and/or from any information provided in this document. The customer is obliged to defend, indemnify and hold Infineon Technologies harmless from and against any claims or damages arising out of or resulting from any use thereof.**










**Infineon Technologies reserves the right to modify this document and/or any information provided herein at any time without further notice.**

## Safety precautions

### Safety precautions

**Note:** Please note the following warnings regarding the hazards associated with development systems.

**Table 1** Safety precautions

	<b>Warning:</b> The DC link potential of this board is up to 1000 VDC. When measuring voltage waveforms by oscilloscope, high voltage differential probes must be used. Failure to do so may result in personal injury or death.
	<b>Warning:</b> The evaluation or reference board contains DC bus capacitors which take time to discharge after removal of the main supply. Before working on the drive system, wait five minutes for capacitors to discharge to safe voltage levels. Failure to do so may result in personal injury or death. Darkened display LEDs are not an indication that capacitors have discharged to safe voltage levels.
	<b>Warning:</b> The evaluation or reference board is connected to the grid input during testing. Hence, high-voltage differential probes must be used when measuring voltage waveforms by oscilloscope. Failure to do so may result in personal injury or death. Darkened display LEDs are not an indication that capacitors have discharged to safe voltage levels.
	<b>Warning:</b> Remove or disconnect power from the drive before you disconnect or reconnect wires, or perform maintenance work. Wait five minutes after removing power to discharge the bus capacitors. Do not attempt to service the drive until the bus capacitors have discharged to zero. Failure to do so may result in personal injury or death.
	<b>Warning:</b> The heat sink and device surfaces of the evaluation or reference board may become hot during testing. Hence, necessary precautions are required while handling the board. Failure to comply may cause injury.
	<b>Caution:</b> Only personnel familiar with the drive, power electronics and associated machinery should plan, install, commission and subsequently service the system. Failure to comply may result in personal injury and/or equipment damage.
	<b>Caution:</b> The evaluation or reference board contains parts and assemblies sensitive to electrostatic discharge (ESD). Electrostatic control precautions are required when installing, testing, servicing or repairing the assembly. Component damage may result if ESD control procedures are not followed. If you are not familiar with electrostatic control procedures, refer to the applicable ESD protection handbooks and guidelines.
	<b>Caution:</b> A drive that is incorrectly applied or installed can lead to component damage or reduction in product lifetime. Wiring or application errors such as undersizing the motor, supplying an incorrect or inadequate AC supply, or excessive ambient temperatures may result in system malfunction.
	<b>Caution:</b> The evaluation or reference board is shipped with packing materials that need to be removed prior to installation. Failure to remove all packing materials that are unnecessary for system installation may result in overheating or abnormal operating conditions.

## Table of contents

	<b>About this document</b> .....	1
	<b>Important notice</b> .....	2
	<b>Safety precautions</b> .....	3
	<b>Table of contents</b> .....	4
<b>1</b>	<b>Overview</b> .....	5
1.1	Key features .....	5
1.2	Block diagram .....	6
<b>2</b>	<b>Hardware description</b> .....	7
2.1	Power supply .....	8
2.2	Clock generation .....	9
2.3	Debug interface .....	10
2.3.1	On-board USB debugger .....	10
2.3.2	Debug connector (8-pin) .....	12
2.3.3	Infineon debug connector (16-pin) .....	13
2.4	Potentiometer and user LEDs .....	15
2.5	USIC0 connector .....	16
2.6	Hall sensor and encoder connectors .....	17
2.7	Power board connector .....	20
<b>3</b>	<b>Production data</b> .....	23
3.1	Schematics .....	23
3.2	Component placement .....	26
3.3	Bill of material (BOM) .....	27
	<b>Revision history</b> .....	29
	<b>Disclaimer</b> .....	30

## **1 Overview**

# **1 Overview**

The drive card KIT\_XMC1400\_DC\_V1 houses the following:

- XMC1402 microcontroller
- Power board connector
- Set of position interface circuits with hall and encoder connectors
- USIC interface and an
- Isolated on-board debug interface

The board along with a three-phase inverter demonstrates the capabilities of the XMC1402. The main use case for this board is to demonstrate the motor control features of the XMC1402 device including the tool chain. The focus is safe operation under evaluation conditions. The board is not cost or size optimized and does not serve as a reference design.

## **1.1 Key features**

The KIT\_XMC1400\_DC\_V1 board is equipped with the following features:

- Infineon XMC1402 (Arm® Cortex®-M0-based) microcontroller, 200 KB on-chip flash, TSSOP38
- Connection to the power inverter via the power board connector
- Combined hall sensor and encoder interface
- USIC interface connector for connection of UART, SPI, or I2C
- Six LEDs
  - Two Power indicating LEDs
  - One User LED (P0.4)
  - One encoder enables LED
  - Two Debug LEDs (DEBUG, COM)
- Potentiometer, connected to analog input P2.5 (ADC group 1, channel 7)
- Isolated Debug options
  - On-board debugger (SEGGER J-Link LITE) via USB connector
  - Infineon debug connector 16-pin (0.1”) with DriveMonitor USB Stick V2 (KIT\_DRIVEMONI\_USB\_V2),
- Isolated connectivity
  - UART channel of on-board debugger (SEGGER J-Link LITE) via USB connector
- Power supply of MCU domain
  - Via power board connector (5 V)
- Power supply of isolated debug domain
  - Via debug USB connector
  - Via Infineon debug connector 16-pin

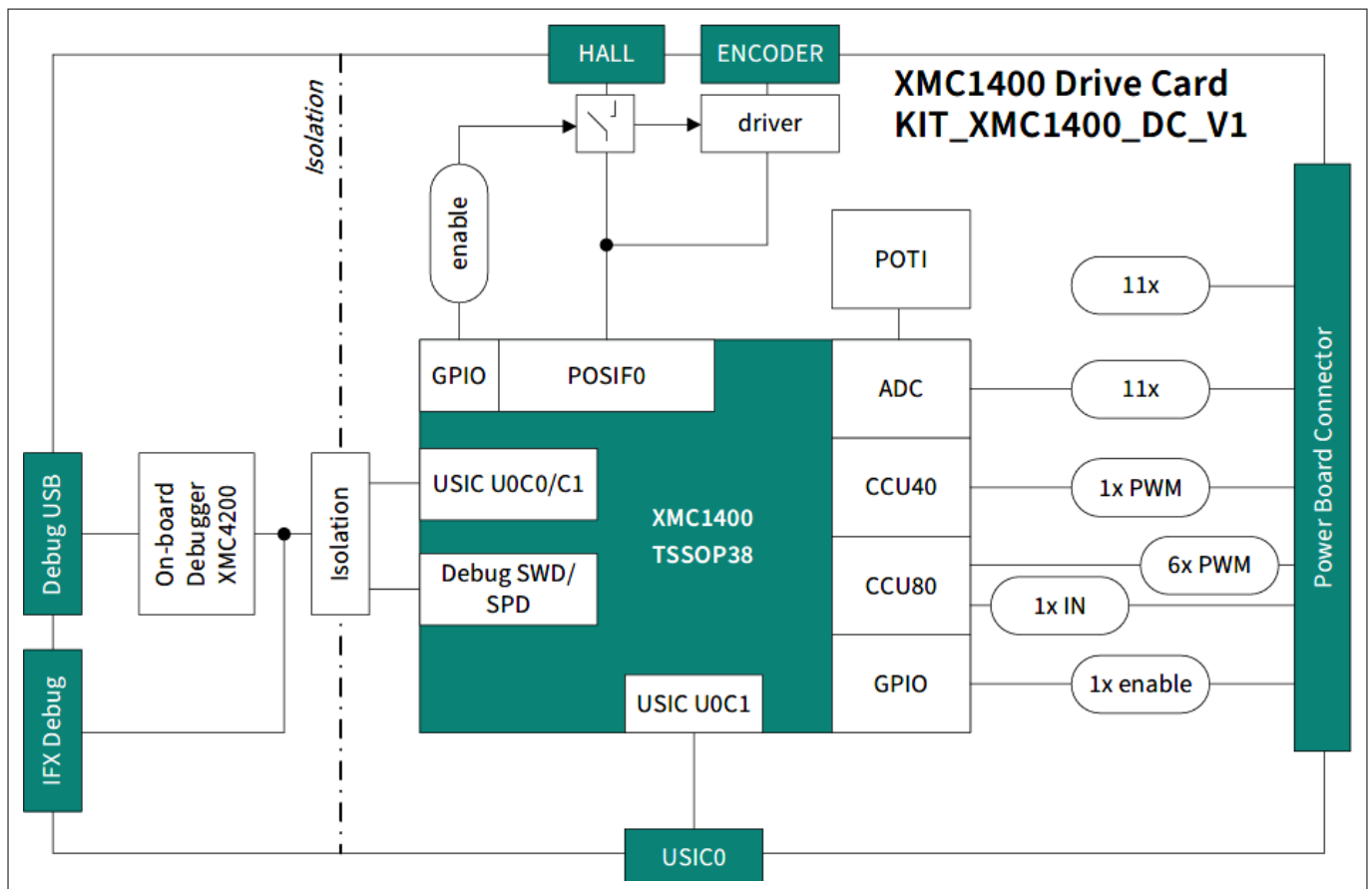
## 1 Overview

### 1.2 Block diagram

Figure 1 shows the functional block diagram of the KIT\_XMC1400\_DC\_V1 board. For more information about the power supply domains, refer to [Power supply](#).

The drive card has the following building blocks:

- One Power board connector
- One set of position interface connectors (HALL, ENCODER)
- Encoder enables signals via GPIOs (P0.10)
- One User LED connected to GPIOs (P0.4)
- Variable resistor (POTI) connected to GPIO P2.5 (ADC group 1, channel 7)
- USIC0 interface connector (P0.10, P0.14, P1.4, P1.5)
- Isolated on-board debugger via debug USB connector (Micro-USB) with UART channel (USIC0, channel 1)
- Optional Infineon debug interface connector for Drive Monitor USB Stick V2 (KIT\_DRIVEMONI\_USB\_V2)

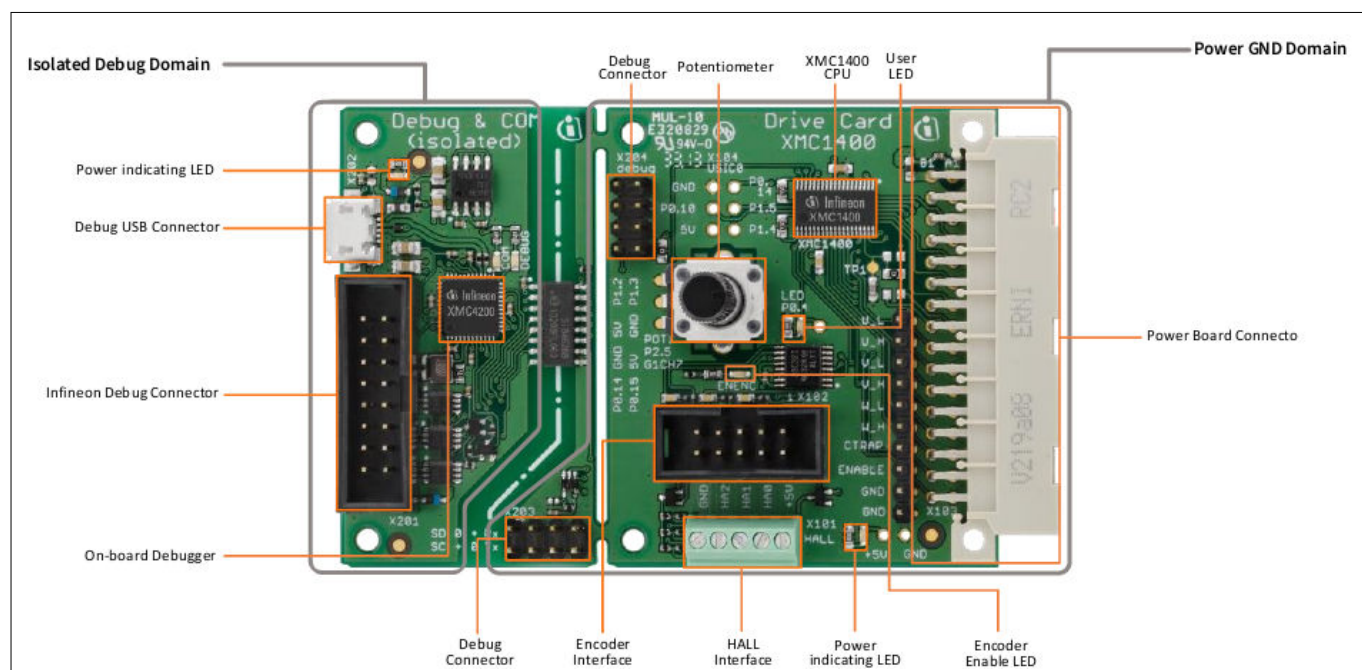


**Figure 1** KIT\_XMC1400\_DC\_V1 block diagram

## 2 Hardware description

## 2 Hardware description

This section gives a detailed description of the hardware and how it is used.



**Figure 2** XMC1400 Drive Card (KIT\_XMC1400\_DC\_V1)



## 2 Hardware description

### 2.1 Power supply

The KIT\_XMC1400\_DC\_V1 board is designed with two galvanically isolated supply domains. On the left side, there is the debug domain, which contains an XMC4200 MCU as an on-board debug controller (OBD) as well as a level shifter to a 5 V debug interface like the drive monitor USB stick (KIT\_DRIVEMONI\_USB\_V2). The debug domain can be powered via the USB plug (5 V) as well as the Infineon debug connector.

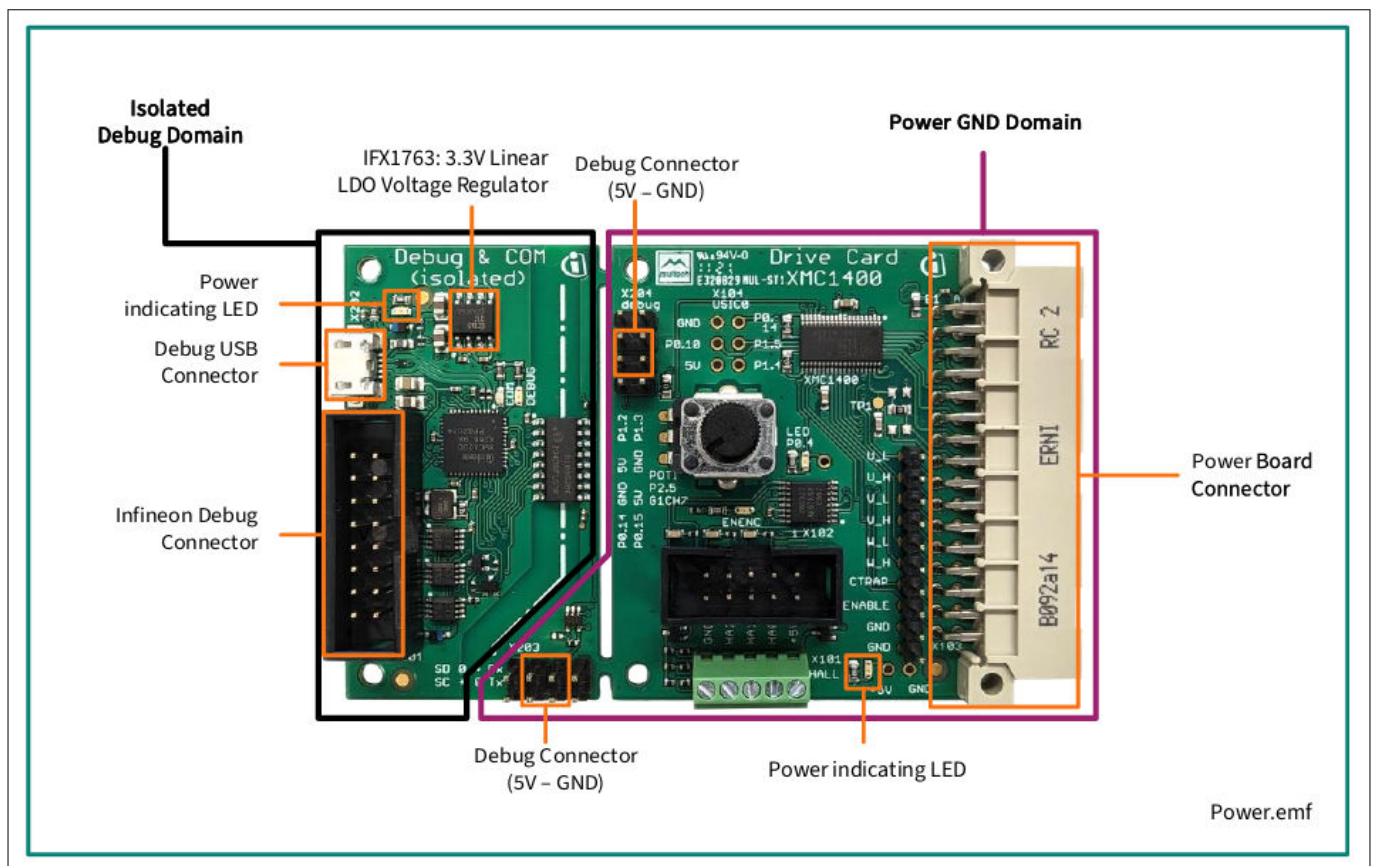
In the middle, there is the power GND supply domain, which provides the power supply for the MCU and the peripheral components. This supply domain is usually powered from the power board connector. The current drawn by the drive card at the power GND domain is typically 25 mA.

Two power indicating LEDs are provided on the board (see Figure 3) to indicate the power status of the KIT\_XMC1400\_DC\_V1 board. The LED will be “ON” when the corresponding power rail is powered.

**Table 2 Power status LED's**

LED reference	Power rail	Voltage	Note
LED101	VDD5	5 V	Power GND domain must always be ON
LED201	VISO5	5 V	The debug supply domain must be ON to use the debug domain

Figure 3 and Figure 4 show the power supply concept of the drive card.



**Figure 3 Power supply concept and powering options**



## 2.2 Clock generation

002-39171 Rev. \*A  
2025-06-16

## 2 Hardware description

### 2.3 Debug interface

The KIT\_XMC1400\_DC\_V1 is designed to use “Serial Wire Debug” (SWD) or “Single Pin Debug” (SPD) as debug interfaces. It supports debugging via different channels, which are galvanically isolated from the power GND supply domain:

- On-board debugger
- Infineon debug connector (16-pin) with debug and UART interface

#### 2.3.1 On-board USB debugger

The on-board debugger<sup>1)</sup> supports:

- Serial Wire Debug (SWD)<sup>2)</sup>
  - SWIO - P0.14 (SWD0)
  - SWCLK - P0.15 (SWD0)

or

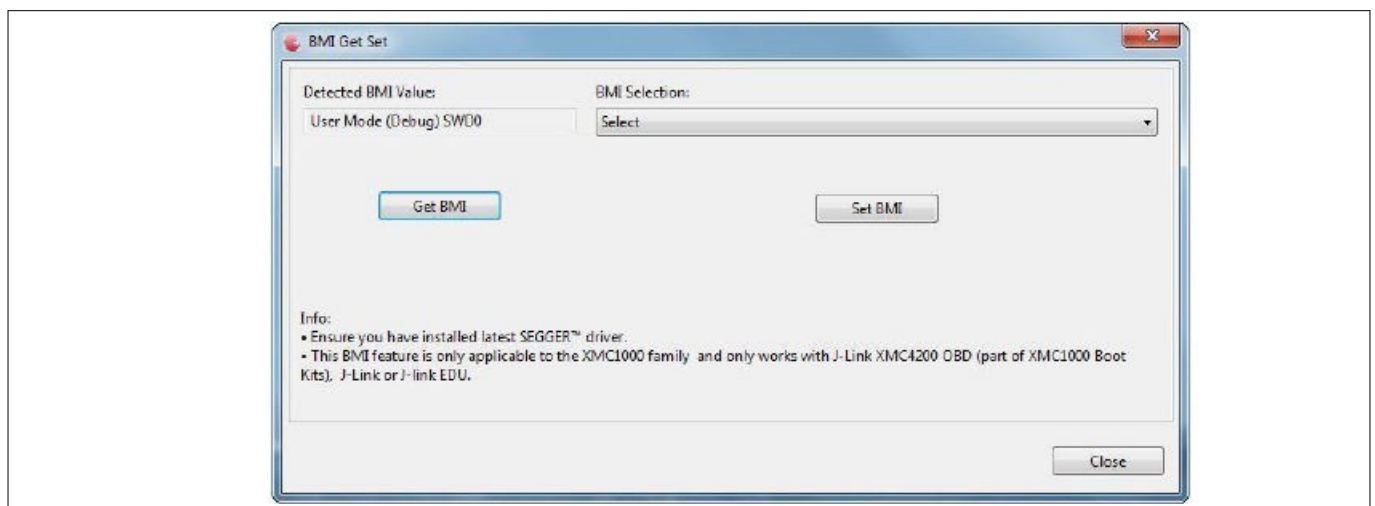
  - SWIO - P1.3 (SWD1)
  - SWCLK - P1.2 (SWD1)
- Single Pin Debug (SPD)<sup>2)</sup>
  - SPD - P0.14 (SPD0)

or

  - SPD - P1.3 (SPD1)
- Full Duplex UART communication via a Virtual COM port
  - PC\_RXD - P1.2 USIC0CH1.DOUT0
  - PC\_TXD - P1.3 USIC0CH1.DX0A

or

  - PC\_RXD - P0.15 USIC0CH0.DOUT0
  - PC\_TXD - P0.14 USIC0CH0.DX0A

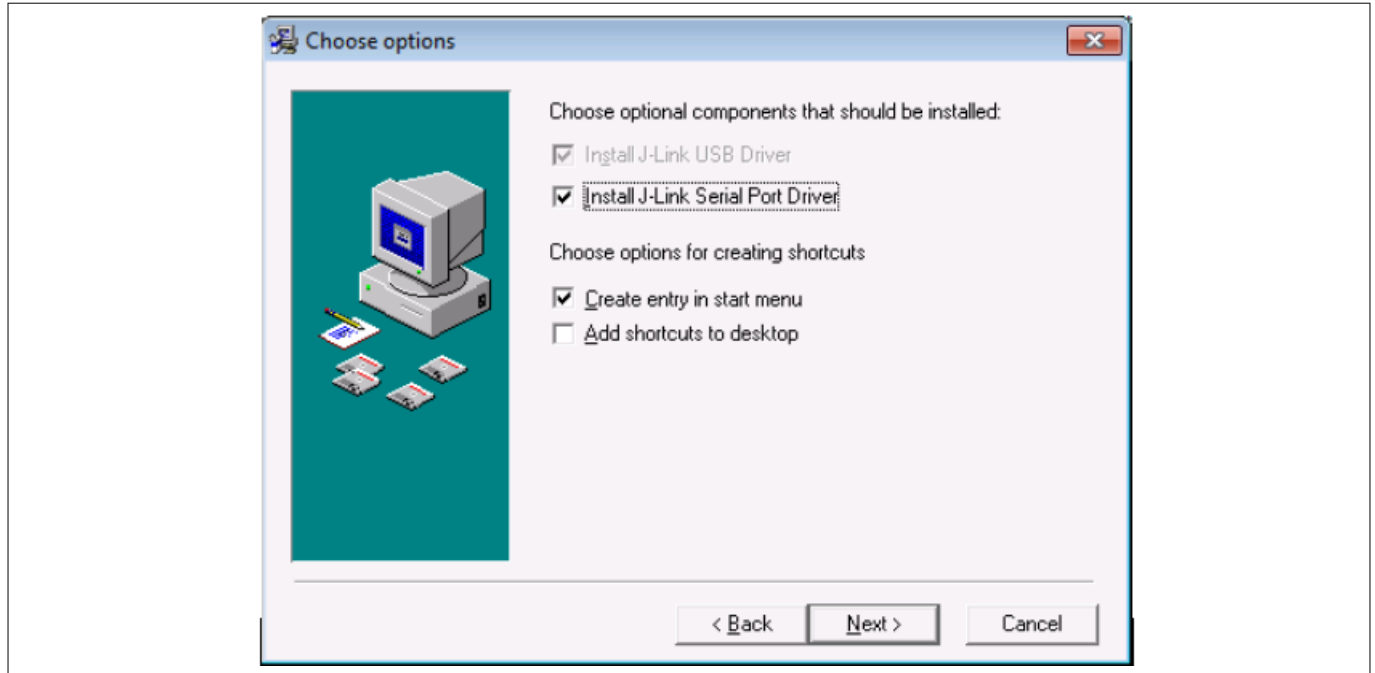


**Figure 5** DAVE™ - “BMI Get Set” for XMC1000 family

<sup>1</sup> The firmware of the on-board debugger requires the latest J-Link driver (V4.62 or higher) and a Serial Port Driver (CDC driver) installed on your computer. Please check “Install J-Link Serial Port Driver” when installing the latest J-Link driver (see [Figure 6](#)).

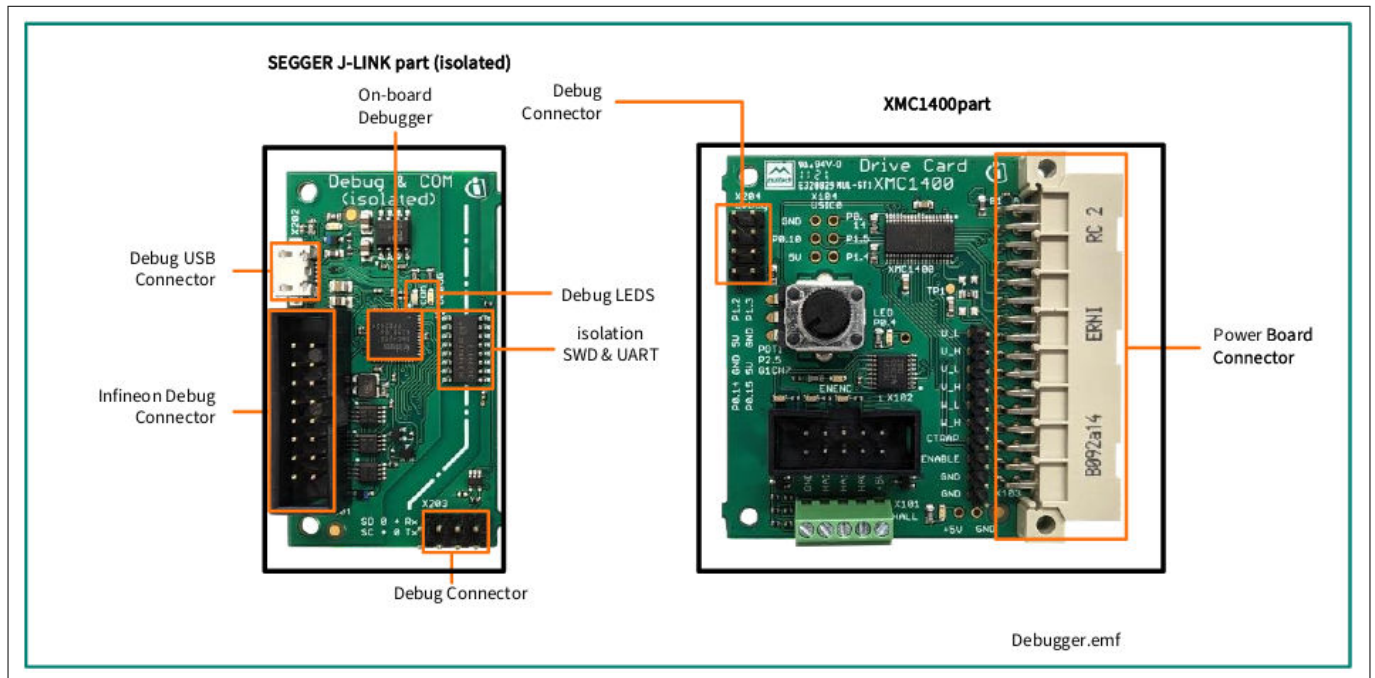
<sup>2</sup> The debug interface type (SPD or SWD) is selected via the boot mode index (BMI) configuration. Changing the BMI is supported by the DAVE™ IDE and the “BMI Get Set” window (see [Figure 5](#)).

## 2 Hardware description



**Figure 6** Installation of Serial Port Driver

The on-board debugger can be accessed through the Debug USB connector as shown in Figure 7. The Debug LED (LED202) shows the status during debugging.



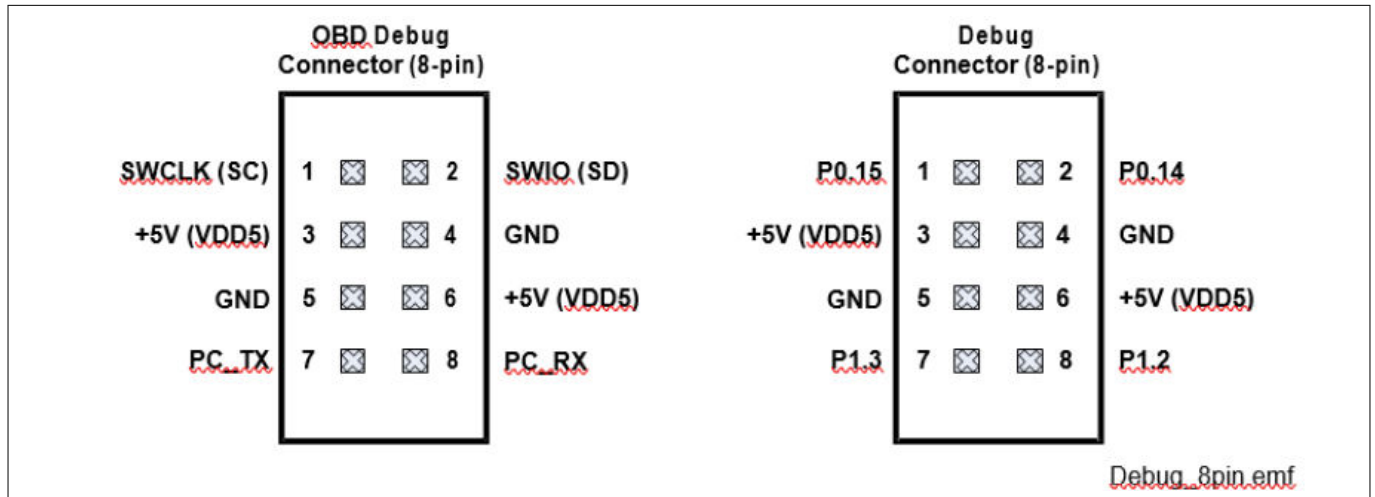
**Figure 7** On-board USB debugger

When using an external debugger connected to the Infineon debug connector (16-pin), the onboard debugger has to be switched off. This is done by connecting pin 6 of the Infineon debug connector to GNDISO.

## 2 Hardware description

### 2.3.2 Debug connector (8-pin)

- The KIT\_XMC1400\_DC\_V1 board supports debugging via SWD and SPD with the OBD as described in the [On-board USB debugger](#) section. The pin assignment is provided in a way that both SWD ports (SWD0 and SWD1) can be selected. See [Figure 8](#) for details on pin assignment.



**Figure 8 Pin assignment of debug connector (8-pin)**

The default connection will provide the following set-up:

- Serial Wire Debug (SWD)
  - SWIO/SPD - P0.14 (SWD0)
  - SWCLK - P0.15 (SWD0)
- Full Duplex UART communication via a Virtual COM port
  - PC\_RXD - P1.2 USIC0CH1.DOUT0
  - PC\_TXD - P1.3 USIC0CH1.DX0A

While breaking off the J-LINK part of the PCB and connecting the debug interface with a ribbon cable, the direct connection will provide the same set-up.

A reverse connection of the debug connector (pin1 to pin8) provides the other set-up:

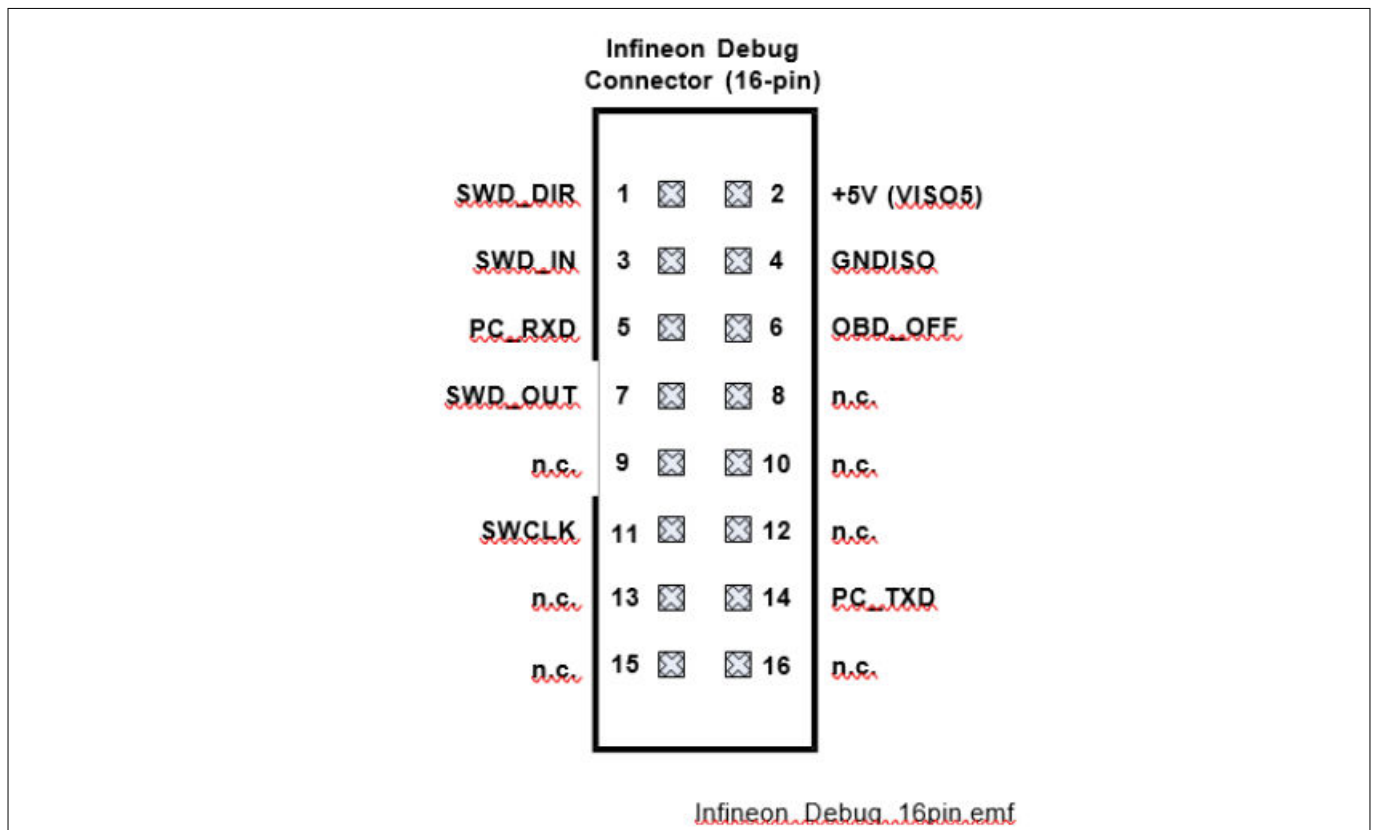
- Serial Wire Debug (SWD)
  - SWIO/SPD - P1.3 (SWD1)
  - SWCLK - P1.2 (SWD1)
- Full Duplex UART communication via a Virtual COM port
  - PC\_RXD - P0.15 USIC0CH0.DOUT0
  - PC\_TXD - P0.14 USIC0CH0.DX0A

## 2 Hardware description

### 2.3.3 Infineon debug connector (16-pin)

The KIT\_XMC1400\_DC\_V1 board supports debugging via Infineon's device access server (DAS), when using the KIT\_DRIVEMONI\_USB\_V2 as an interface device. The latest release of DAS software can be downloaded from the [DAS Tool Interface](#) web page. When using an external debugger, the on-board debugger (OBD) has to be switched off. This is done by connecting pin 6 to GNDISO. KIT\_DRIVEMONI\_USB\_V2 already provides this connection and the OBD is disabled as soon as the connector is plugged in.

Next to the SWD and SPD debug signals, which are provided as unidirectional signals because of the galvanic isolation, UART signals can also be accessed through the Infineon debug connector. [Figure 9](#) shows the pin assignment of the connector. Also, [Table 3](#) lists the signals.



**Figure 9** Infineon debug connector (16-pin)

**Table 3** Infineon Debug connector description

Pin No.	Signal name	I/O	Serial wire debug
1	SWD_DIR	O	Defines the direction of SWIO
2	+5 V (VISO5)	-	+5 V supply of isolated debug domain
3	SWD_IN	I	Input signal of SWIO
4	GNDISO	-	Ground of isolated debug domain
5	PC_RXD	I	UART Receive signal (P1.3, DOUT0 USIC0, channel1)
6	OBD_OFF#	I	Disable on-board debug device (Low active)
7	SWD_OUT	O	Output signal of SWIO

(table continues...)

## 2 Hardware description

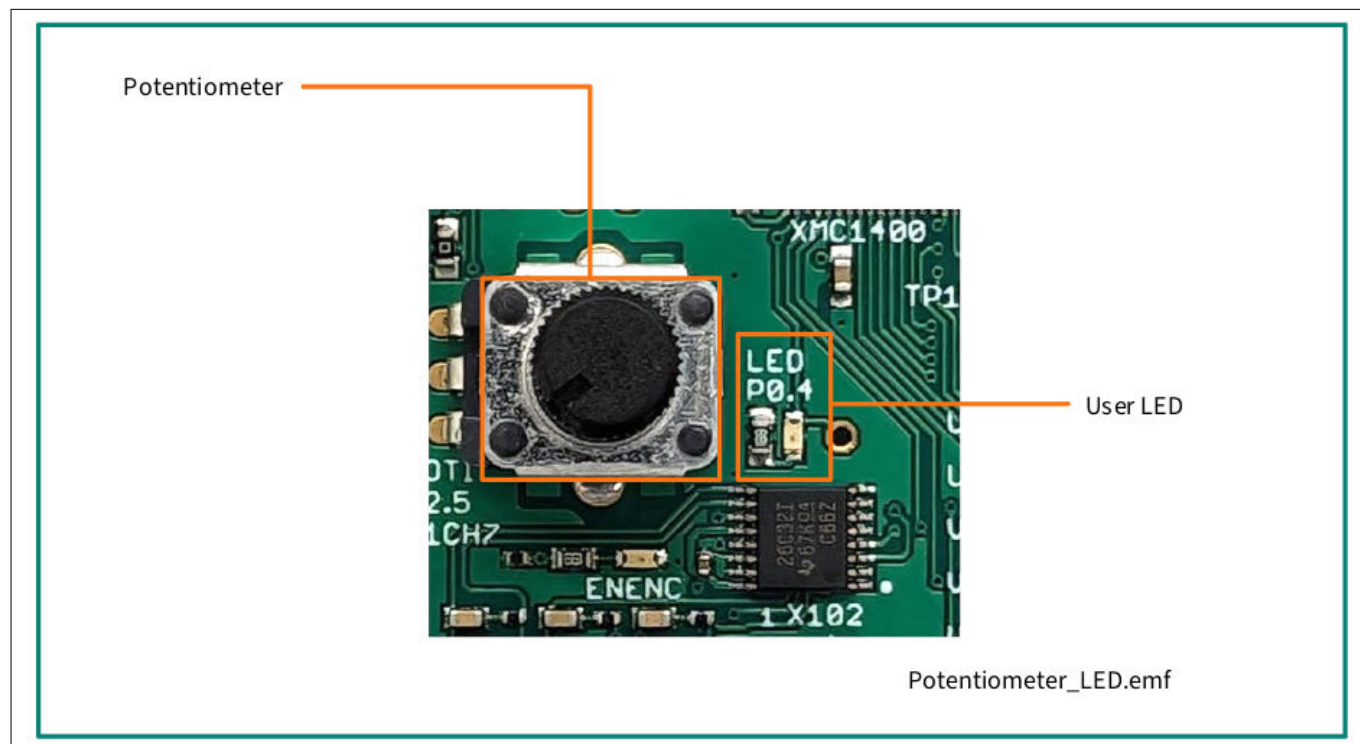
**Table 3** (continued) Infineon Debug connector description

Pin No.	Signal name	I/O	Serial wire debug
8	n.c.	-	Not connected
9	n.c.	-	Not connected
10	n.c.	-	Not connected
11	SWCLK	O	SWD clock signal
12	n.c.	-	Not connected
13	n.c.	-	Not connected
14	PC_TXD	I	UART Transmit signal (P1.2, DX0A, USIC0, channel1)
15	n.c.	-	Not connected
16	n.c.	-	Not connected

## 2 Hardware description

### 2.4 Potentiometer and user LEDs

The KIT\_XMC1400\_DC\_V1 provides a potentiometer, which is connected to ADC group1, channel7, and one user LED (P0.4). Next to the LED, a testpoint is available to connect an oscilloscope's probe for the software-controlled trigger signals.



**Figure 10** Potentiometer and LEDs

**Table 4** Potentiometer

Potentiometer	Connected to port pin
R103	P2.5 / G1_CH7 (Group 1, channel 7)

**Table 5** LEDs

User LEDs	Connected to port pin
LED102	P0.4 (LED)

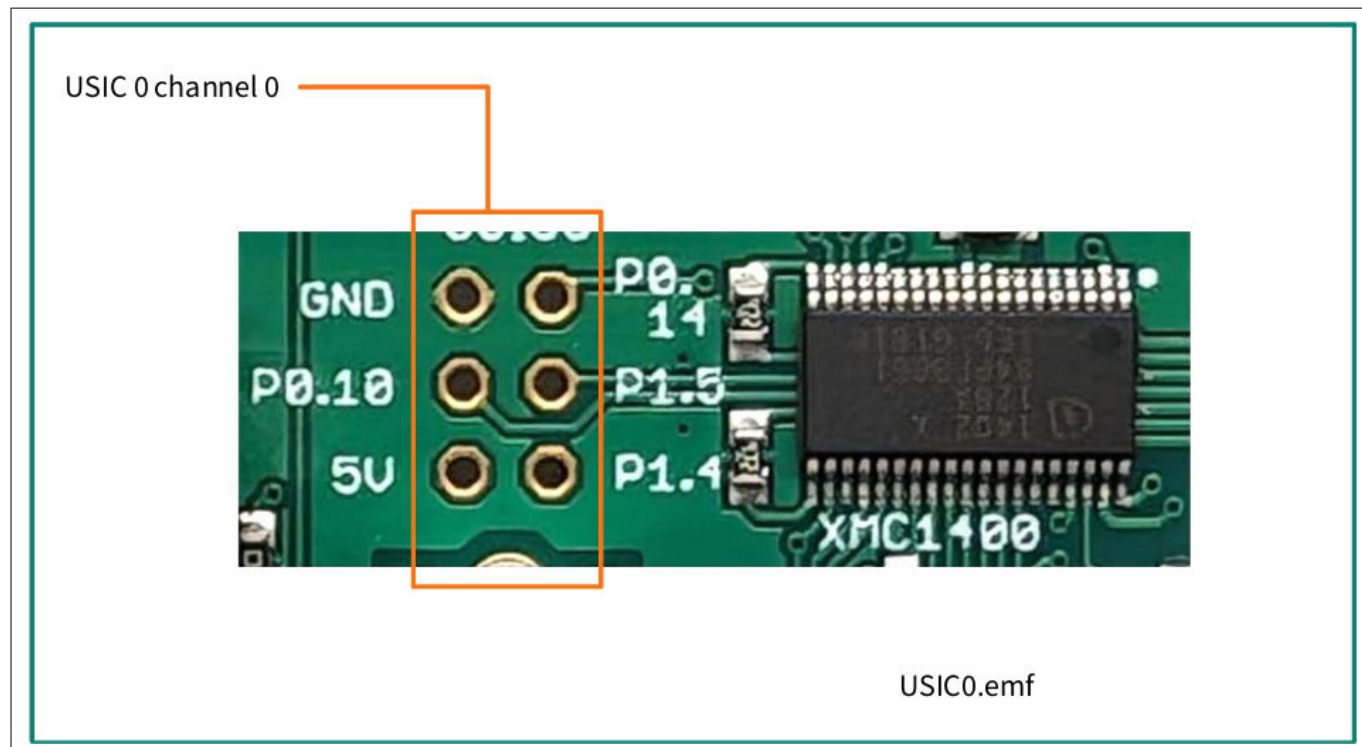
**Attention:** The testpoints are referenced to the power GND supply domain. Hence, they may carry hazardous voltages.



## 2 Hardware description

### 2.5 USIC0 connector

The USIC Interface provides access to USIC 0 channel 0, which supports SPI, UART and I2C communication protocols.



**Figure 11** USIC interface connector

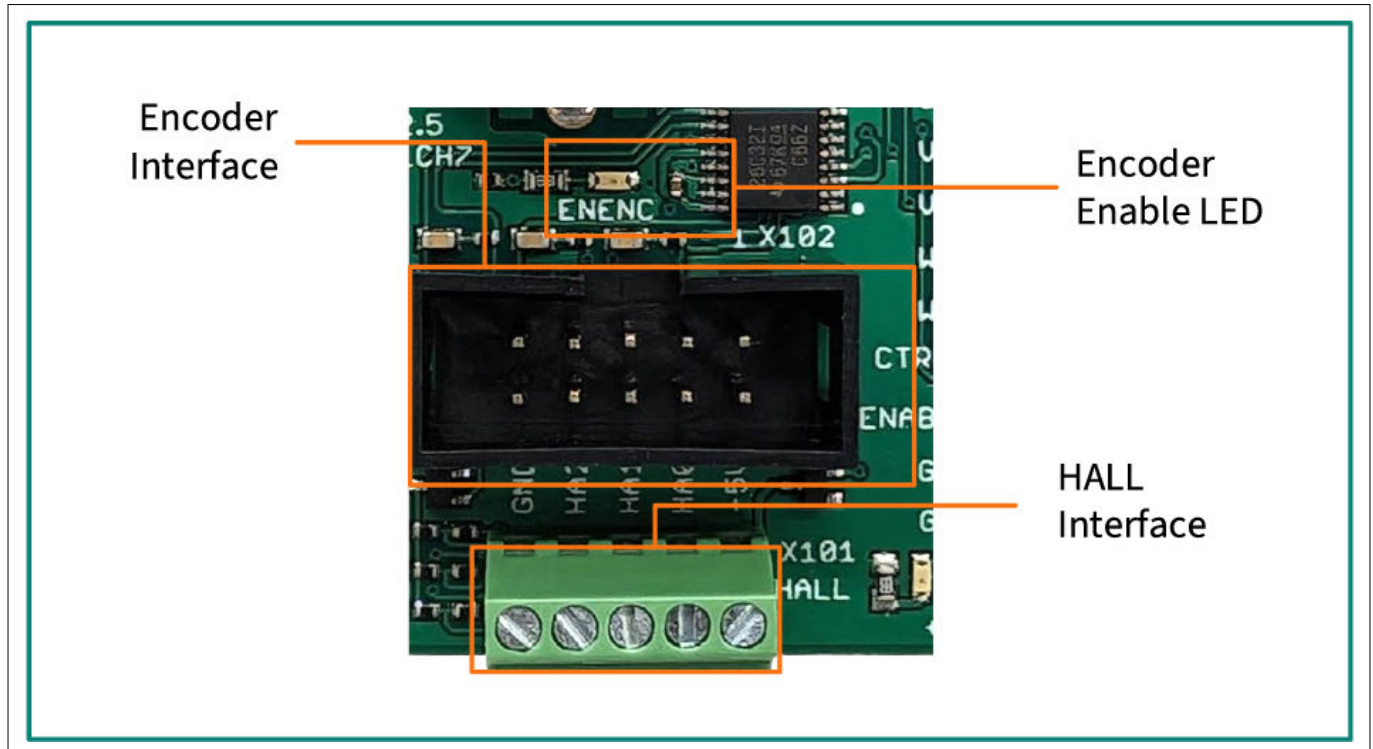
**Table 6** USIC0 Connector X104

Pin	Port	Peripherals	Comment
X104-1	P1.4	USIC0_CH0.DX5E	
X104-2	VDD5	5 V	
X104-3	P1.5	USIC0_CH0.DOUT0	
X104-4	P0.10	USIC0_CH0.SELO1 / DX2C	Overlaps with ENENC
X104-5	P0.14	USIC0_CH0.SCLKOUT	Overlaps with SWD0/SPD0
X104-6	GND	GND	

## 2 Hardware description

### 2.6 Hall sensor and encoder connectors

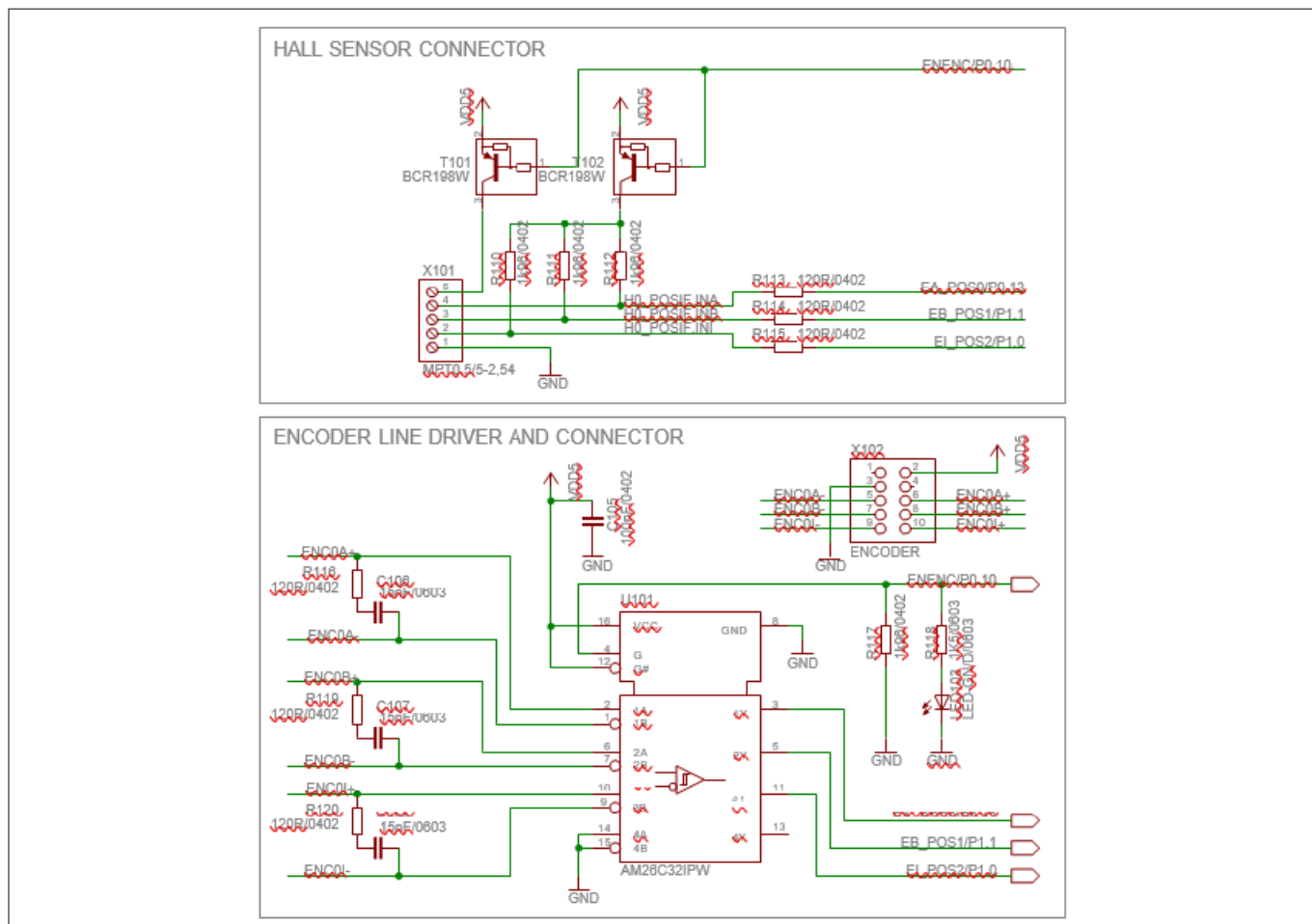
The KIT\_XMC1400\_DC\_V1 provides two pairs of HALL and incremental encoder connectors as indicated in [Figure 12](#). The encoder interface connector provides a differential input, which is transformed into single-ended signals by an interface IC. The HALL sensor interface provides a pull-up resistor for each HALL sensor signal as well as a power supply for the HALL sensors.



**Figure 12** Hall sensor and encoder connectors

Both the HALL and the encoder signals are connected to the same POSIF interface. The ENENC signal is used to either enable the output signals of the encoder IC or to activate the power supply and pull-up resistor supply of the HALL sensor interface. As a result, both interfaces can be connected at the same time and the user can select which interface to use. [Figure 13](#) shows the HALL sensor and encoder interface circuitry. See [Table 7](#) for details on pin and peripheral assignment.

## 2 Hardware description



**Figure 13** Hall sensor and encoder interface circuitry

**Table 7** HALL Sensor and Encoder Interfaces

Pin	Port	Peripheral
<b>HALL Sensor Interface X101</b>		
1	GND	
2	P1.0	POSIF0.IN2A
3	P1.1	POSIF0.IN1B
4	P0.13	POSIF0.IN0B
5	VDD5	HALL sensor power supply
<b>Encoder Interface X102</b>		
1	n.c.	
2	VDD5	Encoder power supply
3	GND	
4	n.c.	
5	ENCA-	POSIF0.IN0B

(table continues...)

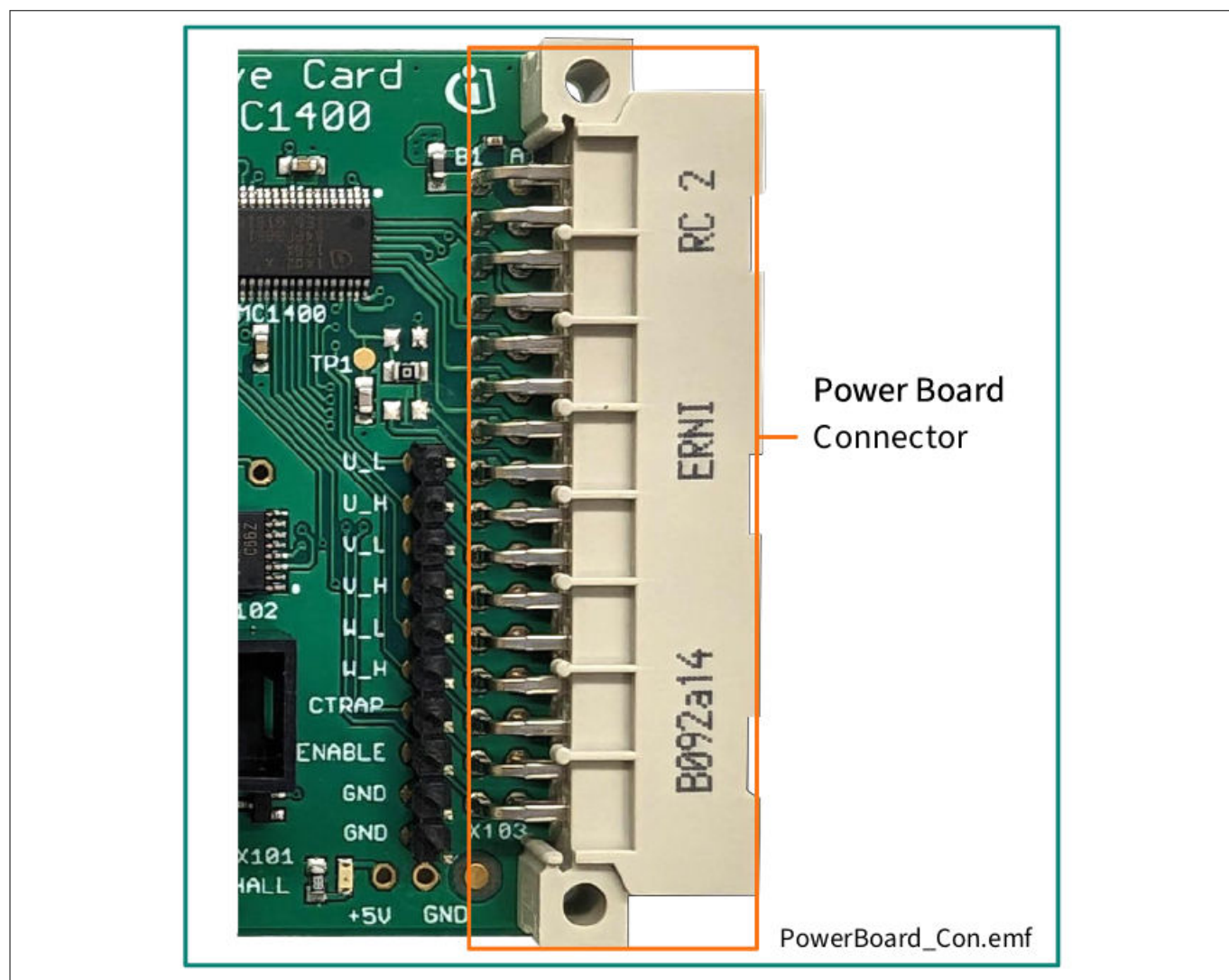
## 2 Hardware description

**Table 7** (continued) HALL Sensor and Encoder Interfaces

Pin	Port	Peripheral
6	ENCA+	POSIF0.IN1B
7	ENCB-	
8	ENCB+	
9	ENCI-	POSIF0.IN2A
10	ENCI+	
Enable Encoder		
LED103	P0.10	High: Enable Encoder Interface Low: Enable HALL Interface including supply

## 2.7 Power board connector

Figure 14 shows the power board connector. Table 8 lists the pin and peripheral assignments. In addition, Table 9 lists different use cases for three phase inverters.



**Attention:** The power board connector also provides the power supply to the power GND supply domain; hence, it may carry hazardous voltages.

<b>X302 MAB32B2</b>	<b>Female FAB32Q2</b>	<b>Function on power inverter</b>	<b>Port</b>	<b>Peripherals</b>	
A1	A16	GND	VSS, VSSP		
A2	A15	PFC Gate	P0.5	CCU40.CC40	CMP2.OUT
A3	A14	I <sub>PFC</sub>	P2.2	VADC0.G0CH7	ACMP2.INN

002-39171 Rev. \*A  
2025-06-16

## 2 Hardware description

**Table 8** (continued) Power board connector

X302 MAB32B2	Female FAB32Q2	Function on power inverter	Port	Peripherals	
A4	A13	$V_{PFC}$	P2.4		VADC0.G1CH6
A5	A12	$V_{BEMF\_U} / I_U (2)$	P2.9	VADC0.G0CH2	VADC0.G1CH4
A6	A11	$V_{BEMF\_V} / I_V (2)$	P2.10	VADC0.G0CH3	VADC0.G1CH2
A7	A10	$V_{BEMF\_W} / I_W (2)$	P2.11	VADC0.G0CH4	VADC0.G1CH3
A8	A9	$I_{AVG} / I_{DClk} (2)$	P2.1	VADC0.G0CH6	
A9	A8	U1_L	-		
A10	A7	U1_H	-		
A11	A6	V1_L	-		
A12	A5	V1_H	-		
A13	A4	W1_L	-		
A14	A3	W1_H	-		
A15	A2	CTRAP1	-		
A16	A1	ENPOW1	-		
B1	B16	VCC 5 V	VDD, VDDP		
B2	B15	Brake Gate	-		
B3	B14	Brake temp	-		
B4	B13	$V_{DClk}$	P2.3		VADC0.G1CH5
B5	B12	$V_{BEMF\_U} / I_U (1)$	P2.6	VADC0.G0CH0	
B6	B11	$V_{BEMF\_V} / I_V (1)$	P2.8	VADC0.G0CH1	VADC0.G1CH0
B7	B10	$V_{BEMF\_W} / I_W (1)$	P2.0	VADC0.G0CH5	
B8	B9	$I_{DClk} (1)$	P2.7		VADC0.G1CH1
B9	B8	U0_L	P0.1	CCU80.OUT01	
B10	B7	U0_H	P0.0	CCU80.OUT00	
B11	B6	V0_L	P0.6	CCU80.OUT11	
B12	B5	V0_H	P0.7	CCU80.OUT10	
B13	B4	W0_L	P0.9 & P0.3	CCU80.OUT21	CCU80.OUT03
B14	B3	W0_H	P0.8 & P0.2	CCU80.OUT20	CCU80.OUT02
B15	B2	CTRAP0	P0.12	CCU80.IN0A, IN1A, IN2A, IN3A	
B16	B1	ENPOW0	P0.11	GPIO	

**Note:** Please note that the numbering of the power board connector at the drive card is inverse to the numbering at the power board.

## 2 Hardware description

**Table 9** Use cases of PWM signals

X302 (MAB32B2)	Function	Port	Peripheral
<b>2-level inverter with CCU80</b>			
B9	U0_L	P0.1	CCU80.OUT01
B10	U0_H	P0.0	CCU80.OUT00
B11	V0_L	P0.6	CCU80.OUT11
B12	V0_H	P0.7	CCU80.OUT10
B13	W0_L	P0.9	CCU80.OUT21
B14	W0_H	P0.8	CCU80.OUT20
B15	CTRAP0	P0.12	CCU80.IN0A, IN1A, IN2A, IN3A
B16	ENPOW0	P0.11	GPIO
<b>2-level inverter with CCU80 (2 slices only)</b>			
B9	U0_L	P0.1	CCU80.OUT01
B10	U0_H	P0.0	CCU80.OUT00
B11	V0_L	P0.6	CCU80.OUT11
B12	V0_H	P0.7	CCU80.OUT10
B13	W0_L	P0.3	CCU80.OUT03
B14	W0_H	P0.2	CCU80.OUT02
B15	CTRAP0	P0.12	CCU80.IN0A, IN1A, IN2A, IN3A
B16	Enable0	P0.11	GPIO



## 3 Production data

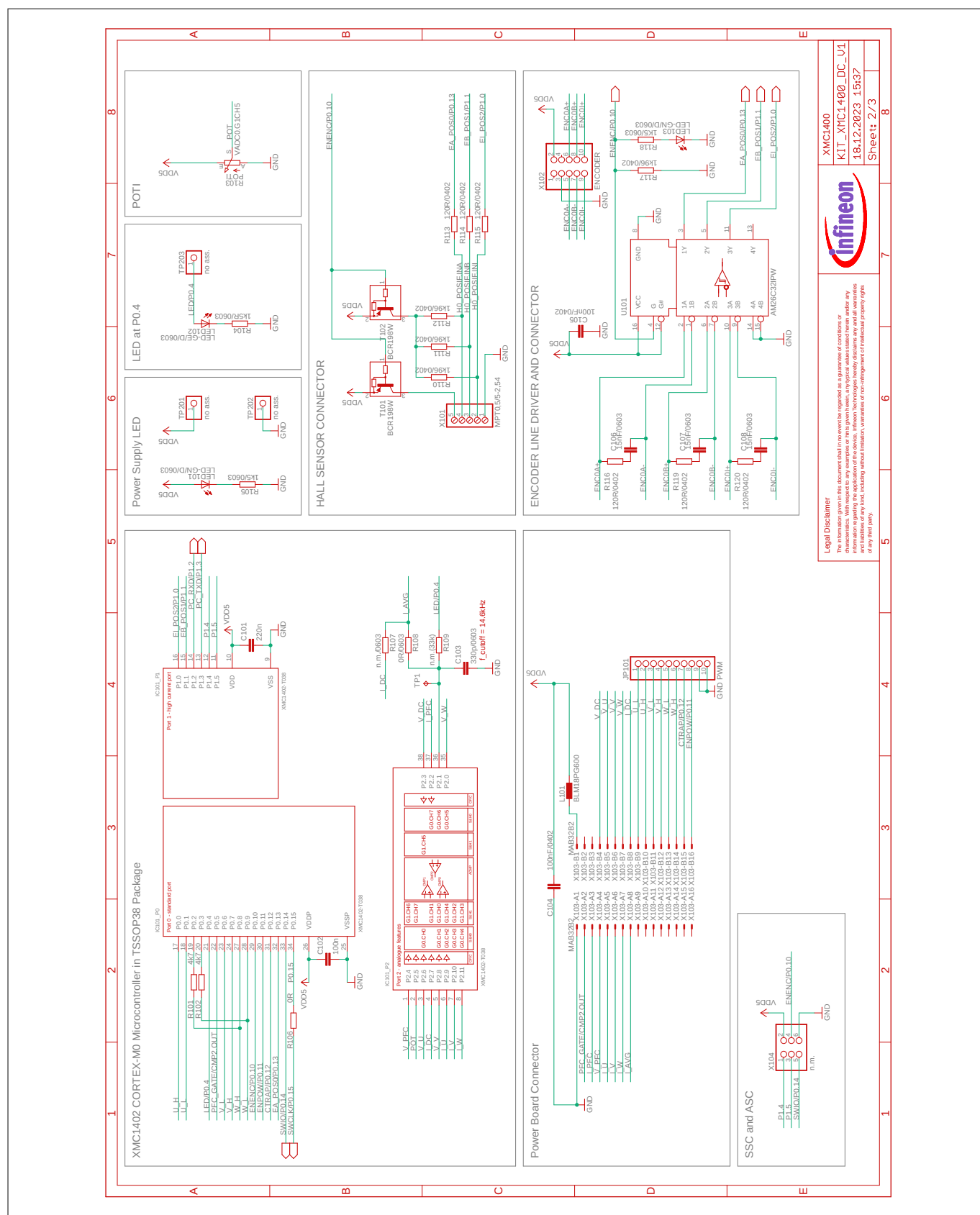
### 3.1 Schematics

This chapter contains the schematics for the following components of the drive card:

- XMC1402 MCU, Power Supply, HALL and Encoder Interface, USIC0 interface
- Isolated On-board Debugger

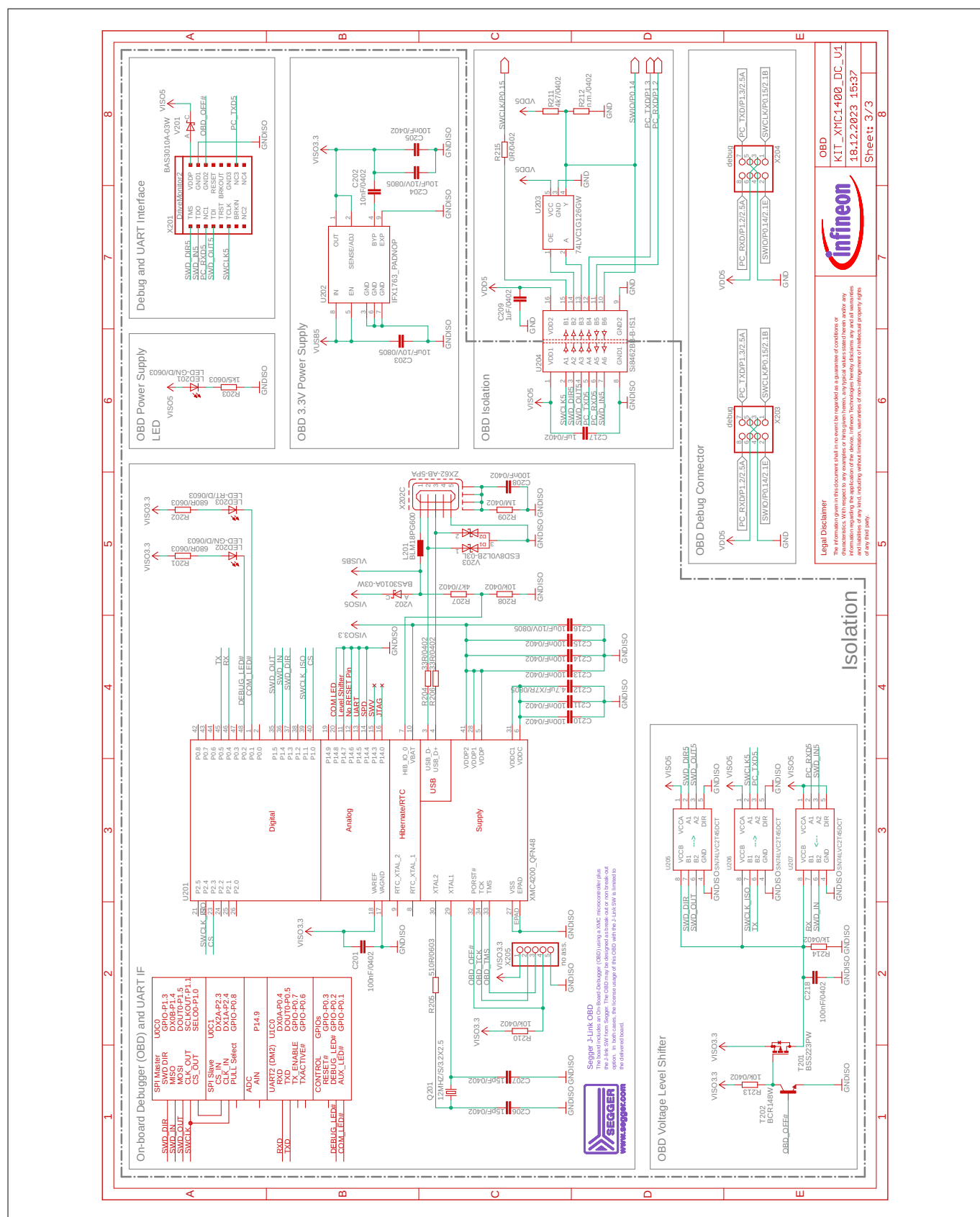
The KIT\_XMC1400\_DC\_V1 board has been designed with Eagle. The full PCB design data of this board can also be downloaded from the [www.infineon.com/xmc-dev](http://www.infineon.com/xmc-dev) web page.

**Figure 15** XMC-1402 MCU, power supply HALL, and encoder interface, USIC0 interface



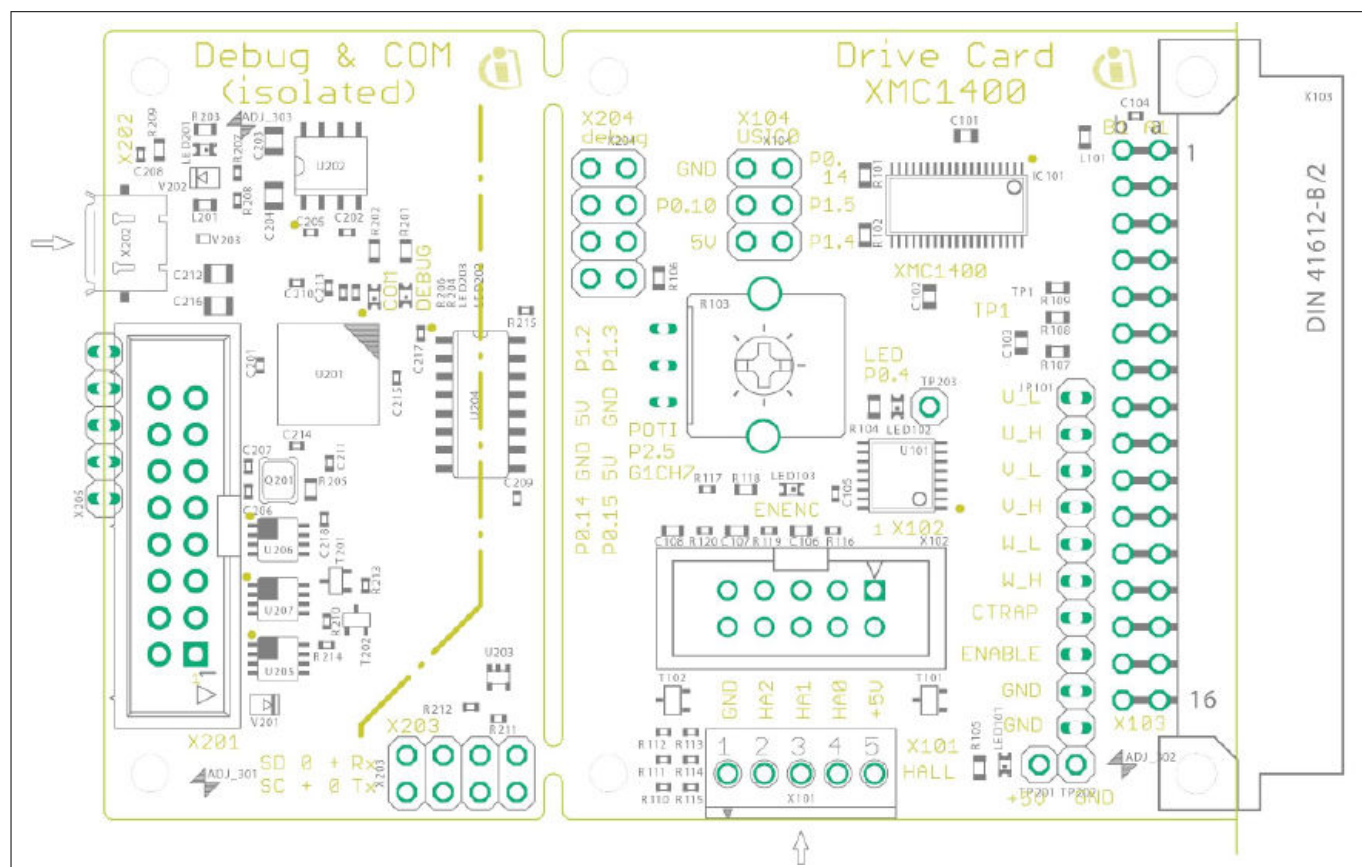
**Figure 15** XMC-1402 MCU, power supply HALL, and encoder interface, USIC0 interface

### Isolated on-board debugger



### 3 Production data

## 3.2 Component placement



**Figure 17** Component placement

### 3 Production data

### 3.3 Bill of material (BOM)

**Table 10** BOM of KIT\_XMC1400\_DC\_V1 Board

Pos. No.	Qty	Value	Device	Reference description
1	2	4k7	RESISTOR 0603	R101, R102
2	1	10k	potentiometer	R103
3	1	1k5R/0603	RESISTOR 0603	R104
4	2	1k5/0603	RESISTOR 0603	R105, R203
5	1	0R	RESISTOR 0603	R106
6	1	n.m./0603	RESISTOR 0603	R107
7	1	0R/0603	RESISTOR 0603	R108
8	1	n.m. (33k)	RESISTOR 0603	R109
9	4	1k96/0402	RESISTOR 0402	R110, R111, R112, R117
10	6	120R/0402	RESISTOR 0402	R113, R114, R115, R116, R119, R120
11	1	1K5/0603	RESISTOR 0603	R118
12	2	680R/0603	RESISTOR 0603	R201, R202
13	2	33R/0402	RESISTOR 0402	R204, R206
14	1	510R/0603	RESISTOR 0603	R205
15	2	4k7/0402	RESISTOR 0402	R207, R211
16	3	10k/0402	RESISTOR 0402	R208, R210, R213
17	1	1M/0402	RESISTOR 0603	R209
18	1	n.m./0402	RESISTOR 0402	R212
19	1	1k/0402	RESISTOR 0402	R214
20	1	0R/0402	RESISTOR 0402	R215
21	1	220n	CAPACITOR 0603	C101
22	1	100n	CAPACITOR 0603	C102
23	1	330p/0603	CAPACITOR 0603	C103
24	11	100 nF/0402	CAPACITOR 0402	C104, C105, C201, C205, C208, C210, C211, C213, C214, C215, C218
25	3	15 nF/0603	CAPACITOR 0603	C106, C107, C108
26	1	10 nF/0402	CAPACITOR 0402	C202
27	3	10 $\mu$ F/10V/0805	CAPACITOR 0805K	C203, C204, C216
28	2	15 pF/0402	CAPACITOR 0402	C206, C207
29	2	1 $\mu$ F/0402	CAPACITOR 0402	C209, C217
30	1	4.7 $\mu$ F/X7R/0805	CAPACITOR 0805K	C212

(table continues...)

### 3 Production data

**Table 10 (continued) BOM of KIT\_XMC1400\_DC\_V1 Board**

Pos. No.	Qty	Value	Device	Reference description
31	2	12 MHz/S/3.2X2.5	CRYSTAL	Q201
32	2	BLM18PG600	FERRIT BEAD	L101, L201
33	4	LED-GN/D/0603	LEDCHIPLED 0603	LED101, LED103, LED201, LED202
34	1	LED-GE/D/0603	LEDCHIPLED 0603	LED102
35	1	LED-RT/D/0603	LEDCHIPLED 0603	LED203
36	2	BCR198W	TRANSISTOR	T101, T102
37	1	BSS223PW	TRANSISTOR	T201
38	1	BCR148W	TRANSISTOR	T202
39	1	XMC1402_TSSOP38	INFINEON MCU	IC101
40	1	IFX1763	INFINEON LDO	U202
41	1	AM26C32IPW	ENCODER IC	U101
42	1	XMC4200_QFN48	INFINEON MCU	U201
43	1	Si8462BB-B-IS1	ISOLATED DIGITAL	U204
44	1	74LVC1G126GW	LOGIC	U203
45	3	SN74LVC2T45DCT	LOGIC	U205, U206, U207
46	2	BAS3010A-03W	BAT60	V201, V202
47	1	ESD8V0L2B-03L	ESD DIODE	V203
48	1	ZX62-AB-5PA	MICRO-USB	X202
49	1	W1*10	CONNECTOR	JP101
50	1	CONP_2X05	CONNECTOR	X102
51	1	MAB32B2	CONNECTOR	X103
52	1	MPT0,5/5-2,54	CONNECTOR	X101
53	2	W2*4	CONNECTOR (DEBUG)	X203, X204
54	1	W2*3	CONNECTOR (USIC)	X104

---

## Revision history

## Revision history

Document revision	Date	Description of changes
**	2024-01-24	Initial release
*A	2025-06-16	Template update; no content update



#### **Trademarks**

All referenced product or service names and trademarks are the property of their respective owners.

**Edition 2025-06-16**

**Published by**

**Infineon Technologies AG**  
**81726 Munich, Germany**

**© 2025 Infineon Technologies AG**  
**All Rights Reserved.**

**Do you have a question about any aspect of this document?**

**Email: [erratum@infineon.com](mailto:erratum@infineon.com)**

**Document reference**  
**IFX-yhi1728561067905**

For further information on the product, technology, delivery terms and conditions and prices please contact your nearest Infineon Technologies office ([www.infineon.com](http://www.infineon.com))

#### **Warnings**

Due to technical requirements products may contain dangerous substances. For information on the types in question please contact your nearest Infineon Technologies office.

Except as otherwise explicitly approved by Infineon Technologies in a written document signed by authorized representatives of Infineon Technologies, Infineon Technologies' products may not be used in any applications where a failure of the product or any consequences of the use thereof can reasonably be expected to result in personal injury.