

μ C/Probe™ XMC™

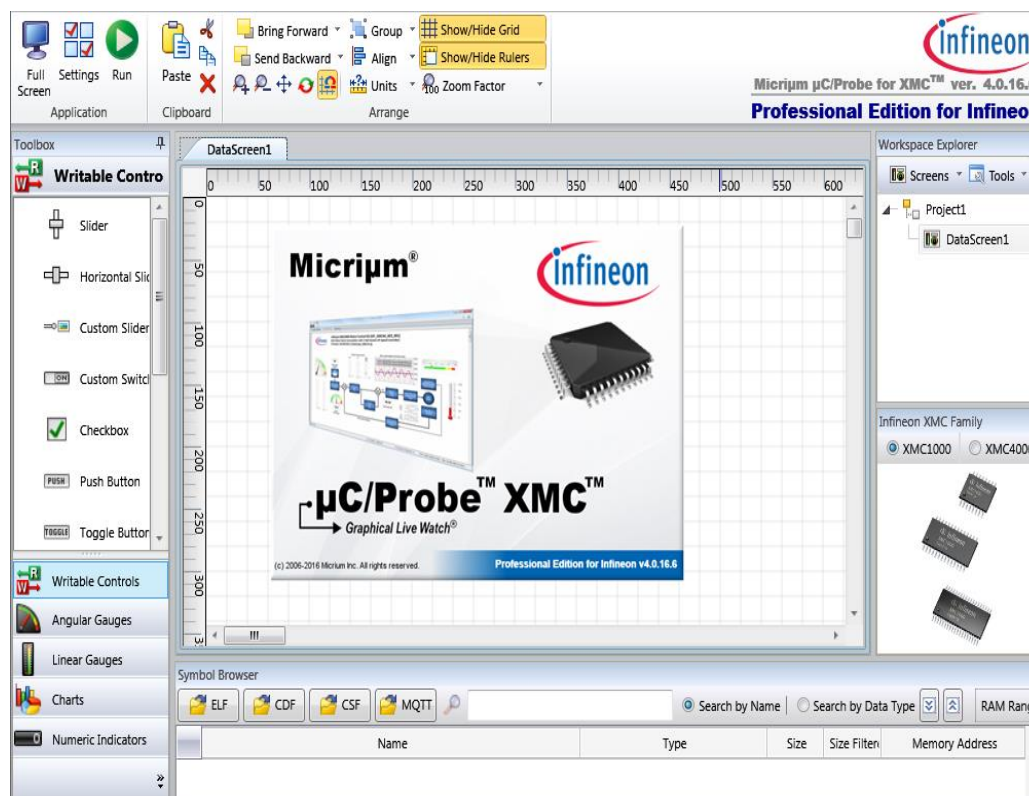
Peek inside XMC™



Peek inside XMC™

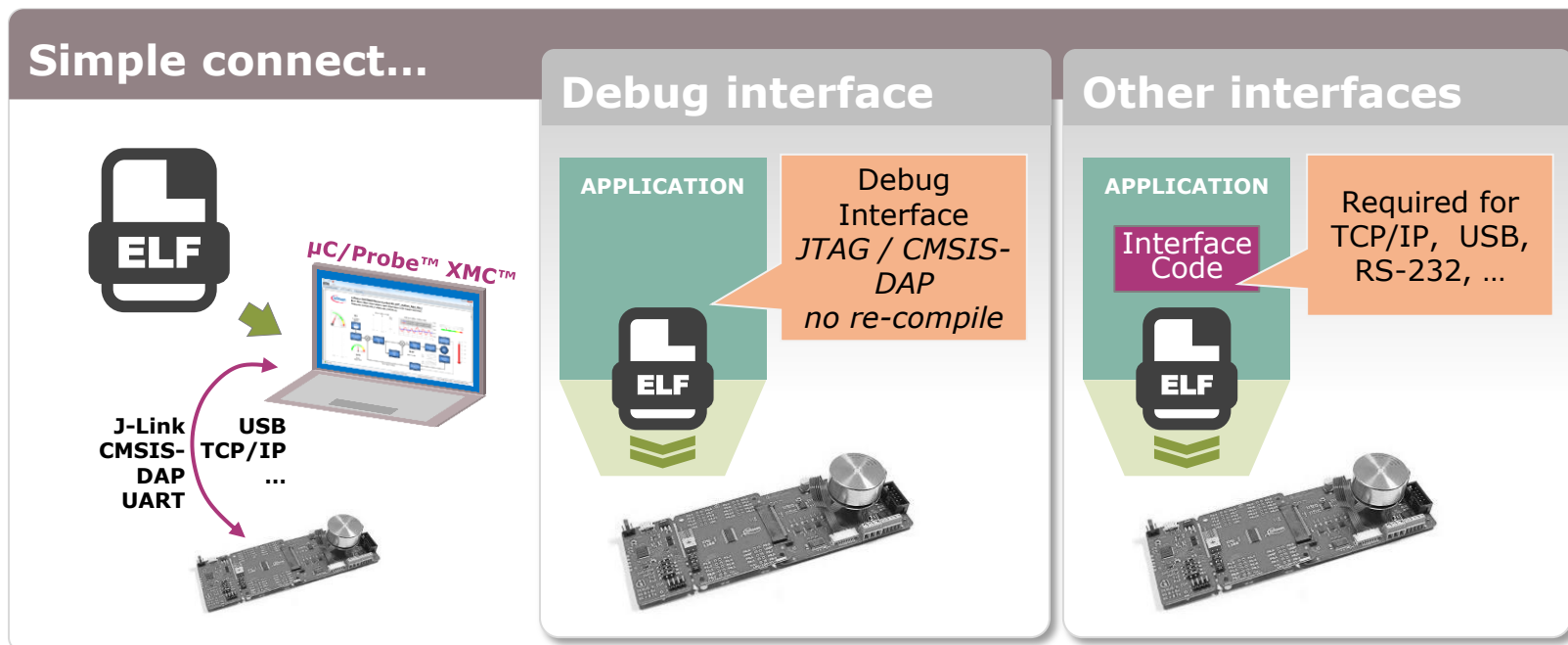
μC/Probe™ XMC™ **Graphical Live Watch™**

- > Visually appealing and real-time
- > Effortless *but powerful*
- > Seamless *ELF file complaint*
- > Professional *but free-of-charge*



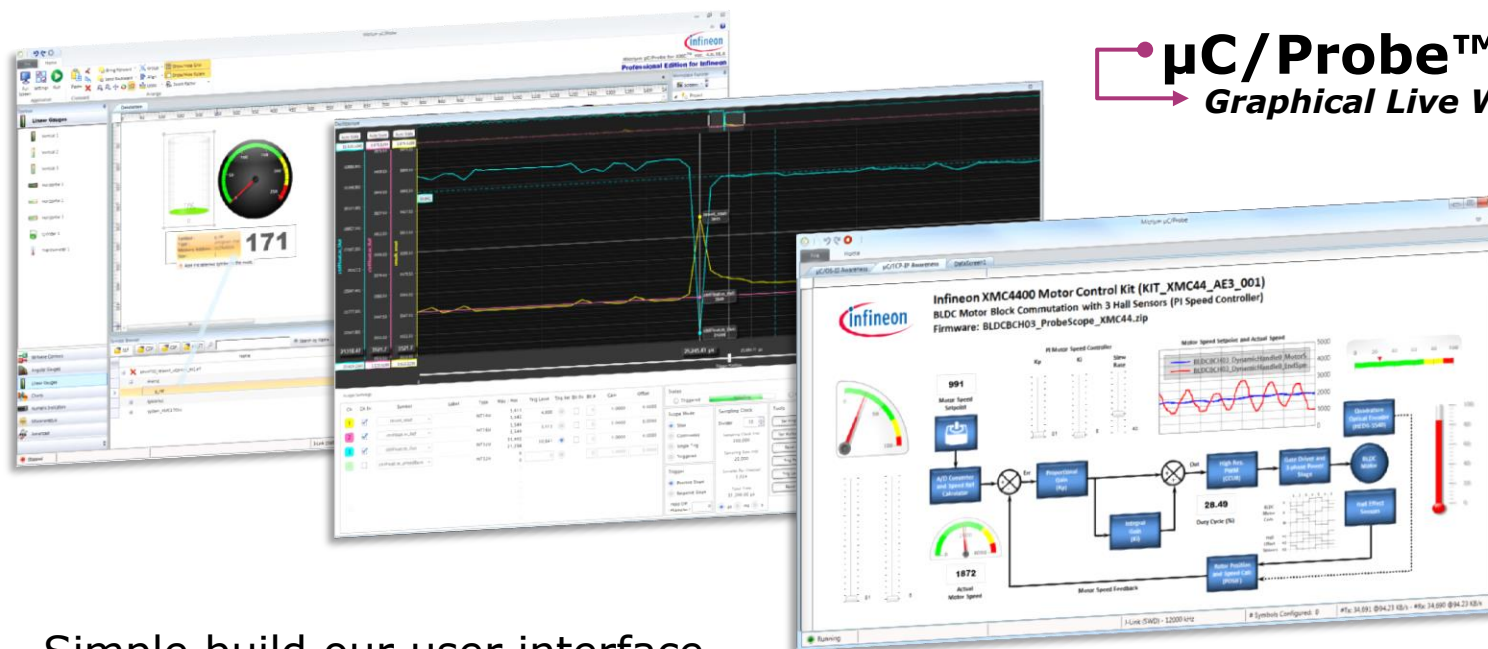
www.infineon.com/ucprobexmc

Just a matter of minutes...



- > Non-intrusive and hot-plug during run-time – peek inside XMC™
- > Extend debugging capabilities – combine with debuggers
- > Available for all [XMC™ MCUs](#) and boards
- > [Tool independent](#) – use ELF file format (IEEE659 standard)

Simple, useful and powerful in one



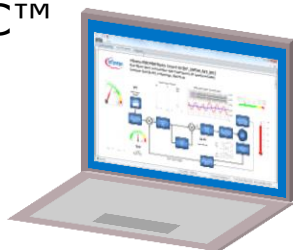
µC/Probe™ XMC™
Graphical Live Watch™

- > Simple build our user interface
 - No need to touch or re-compile your application code
 - Drag and drop controls and indicators
 - Read, observe and visualize internals tangible
 - Access, control and fine-tune your embedded system
- > Use standard ELF file format (IEEE659)

Plug-and-play

Setup

- 1 Install μ C/Probe™
XMC™



- 2 Select ELF file



Build UI

- 3 Drag & drop



- 4 Connect
XMC™ board



Interact

- 5

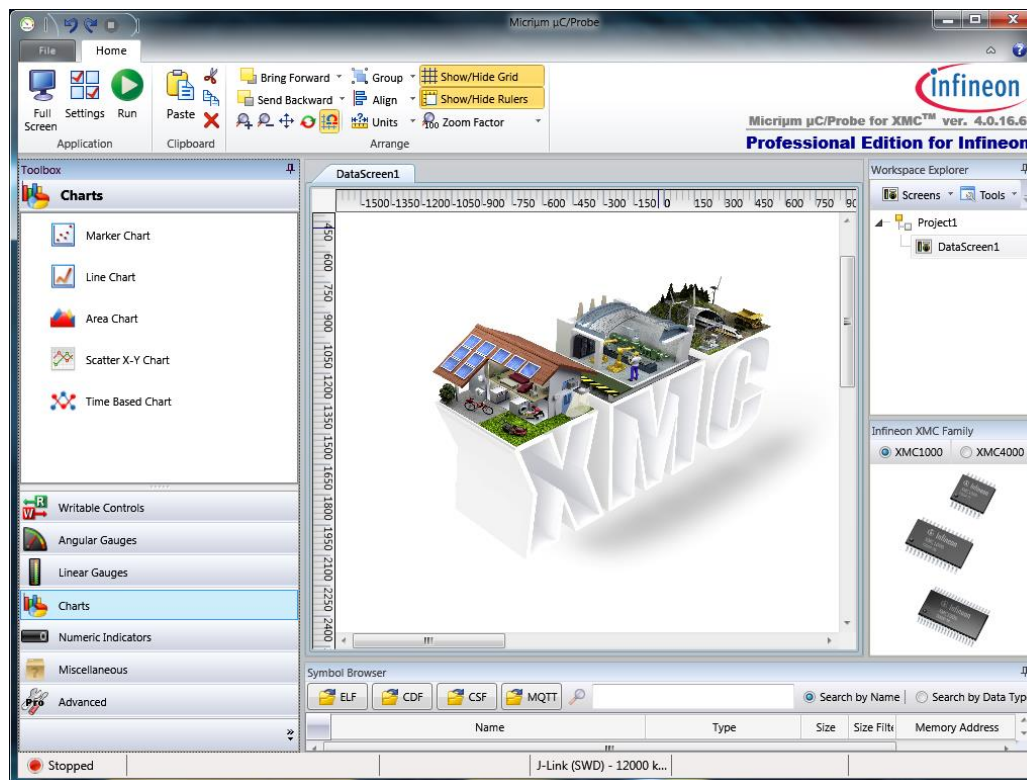


- > Visualize
- > Observe
- > Control

Peek inside XMC™ microcontrollers

μC/Probe™ XMC™ Graphical Live Watch™

- > Prototyping
- > Debugging
- > Trouble shooting
- > Fine-tune
- > Demos



www.infineon.com/ucprobexmc



Part of your life. Part of tomorrow.

