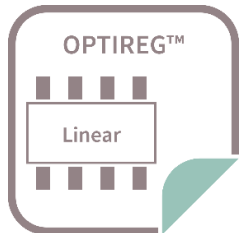


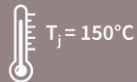
# TLS850C2TE V50

# TLS850C2TE V33

500mA High Performance **Wide input range (3V to 40V)**  
Automotive Grade LDO with **RESET** for **5V** and **3.3V** supply



AEC-Q100  
Grade 1

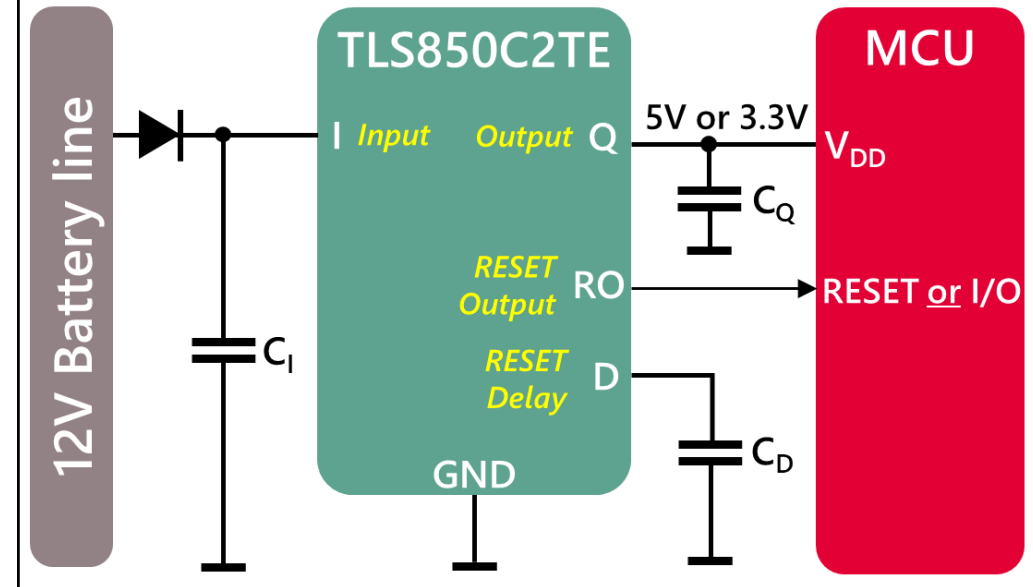


Suitable as  
12V Battery  
connected

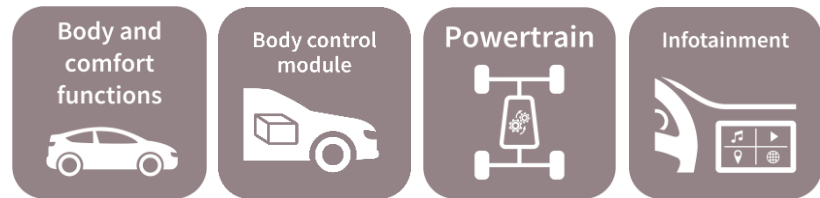


PG-TO252-5 (DPAK-5)  
Total Area ~ 6.5 x 10 mm

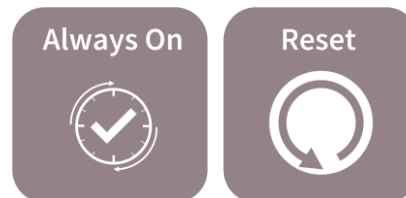
**Typical use case :** MCU supply with supply voltage supervision using the RESET functionality



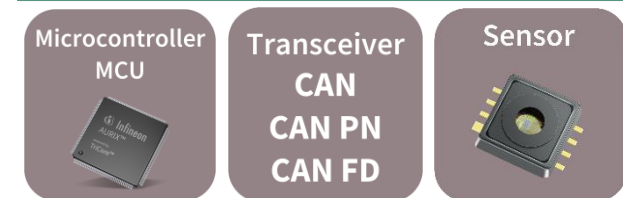
## Target applications



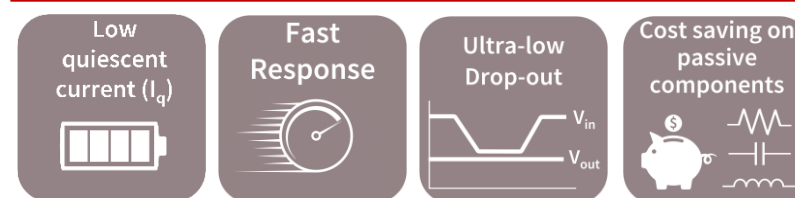
## Feature set



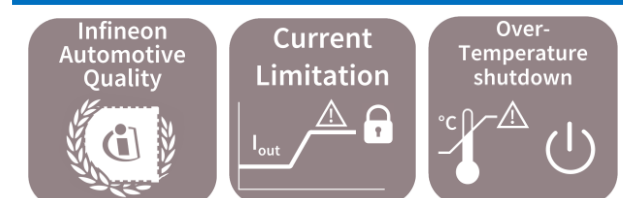
## Best suited to supply



## Key strengths



## Unique differentiators



TLS850C2TE V**50**

TLS850C2TE V**33**

500mA High Performance **Wide** input range (3V to 40V)

Automotive Grade LDO with RESET for **5V** and **3.3V** supply



What are the common points and differences between the **TLS850C2** and **TLS850D0**

Device	Max. Current Output	Voltage Output (available versions)	Package	ENABLE	RESET Functionality		
					Reset Feature available	Adjustable Reset Delay Timing	Adjustable Threshold Reset Voltage
TLS850 <b>C2</b> TE Vxx	500 mA	<b>5V</b> and <b>3.3V</b>	TO-252-5 (DPAK-5)		<b>X</b>	<b>X</b>	
TLS850 <b>D0</b> TE Vxx	500 mA	<b>5V</b> and <b>3.3V</b>	TO-252-5 (DPAK-5)	<b>X</b>	<b>X</b>		
TLS850 <b>D0</b> TA V50	500 mA	<u>Only</u> <b>5V</b>	TO-263-7 (D <sup>2</sup> PAK-7)	<b>X</b>	<b>X</b>	<b>X</b>	<b>X</b>

Common points with the TLS850C2

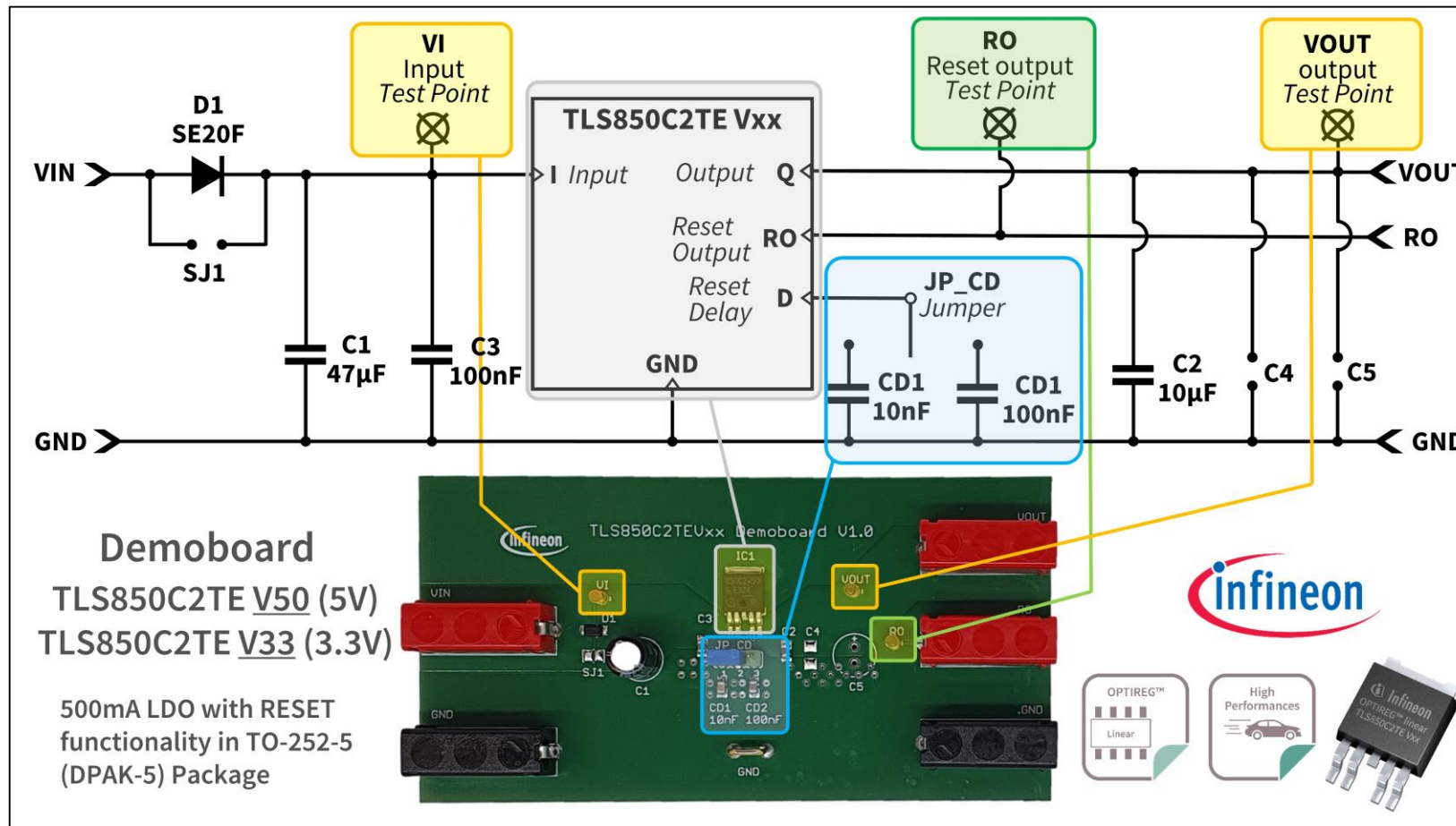
Differences to the TLS850C2

TLS850C2TE V<sub>50</sub>  
TLS850C2TE V<sub>33</sub>

500mA High Performance **Wide input range (3V to 40V)**  
Automotive Grade LDO with **RESET** for **5V** and **3.3V** supply



Plug-and-play, easy-to-use **Demoboards** are available.  
**Get yours today!**



Link to the **5V**  
Version

Link to the **3.3V**  
Version

[www.infineon.com/tls850c2tev50-board](http://www.infineon.com/tls850c2tev50-board)

[www.infineon.com/tls850c2tev33-board](http://www.infineon.com/tls850c2tev33-board)