

TLE9845 Appkit Getting Started

TLE9845_Appkit_PN

TLE9845_Appkit_N



Agenda

1

TLE9845 Appkit overview

2

Product Information links

3

Toolchain installation

Agenda

1

TLE9845 Appkit overview

2

Product Information links

3

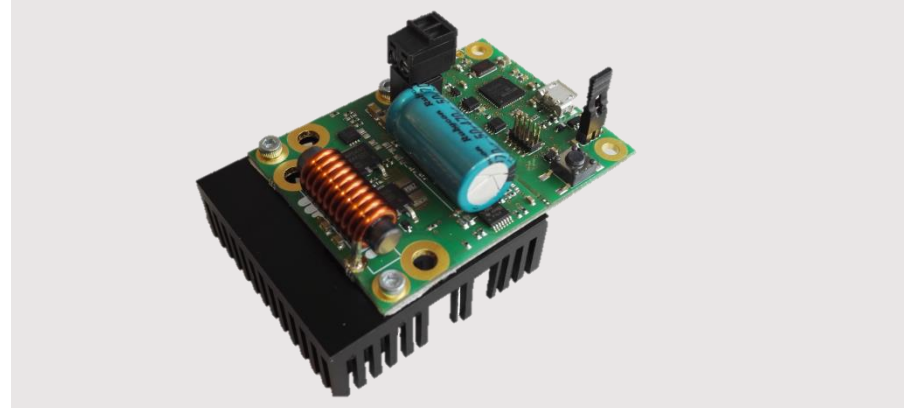
Toolchain installation

Infineon® Embedded Power IC: TLE984xQX Evaluation Boards



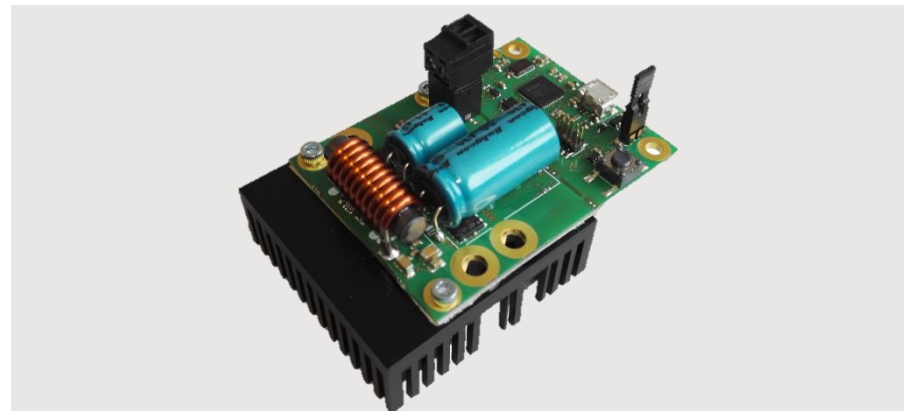
TLE9845QX PN Application Kit

- › PN-MOS half Bridge
- › Highside Shunt with external operational amplifier
- › J-Link OB-Debugger with Serial COM Port
- › LIN Interface
- › TLE9845_Appkit_PN: **SP001693030**



TLE9845QX N Application Kit

- › N-MOS Lowside-Switch
- › **Lowside** Shunt with external operational amplifier
- › J-Link OB-Debugger with Serial COM Port
- › LIN Interface
- › TLE9845_Appkit_N: **SP001693032**



Agenda

1

TLE9845 Appkit overview

2

Product Information links

3

Toolchain installation

Product Information links

Link	Description
www.infineon.com/embeddedpower	Infineon® Embedded Power IC overview Page
TLE984xQX Overview	TLE984xQX Overview Page with general information
TLE984xQX Documents	Datasheets and User Manuals for TLE9842QX, TLE9844QX, TLE9842-2QX, TLE9843-2QX, TLE9844-2QX, TLE9845QX
Evalboard overview	Development Tools: Kits and Boards for all Infineon® Embedded Power ICs

Agenda

1

TLE9845 Appkit overview

2

Product Information links

3

Toolchain installation

Toolchain installation: 1/4

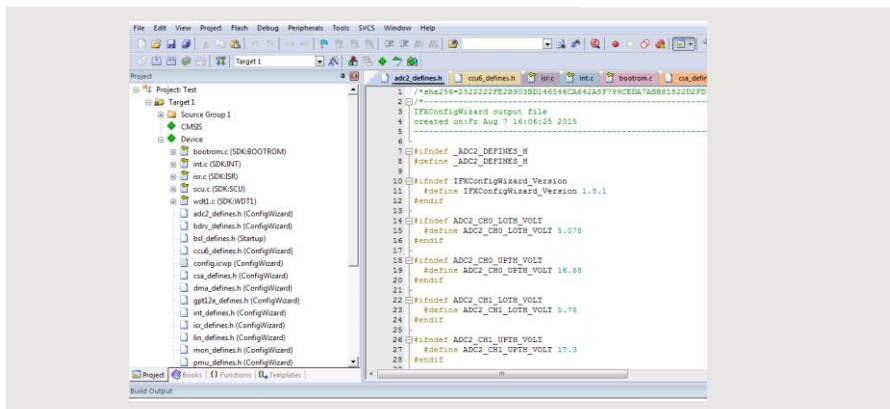
Keil μ Vision5

- > Code Editor & Online Debugger
- > Evaluation version can handle up to 32K

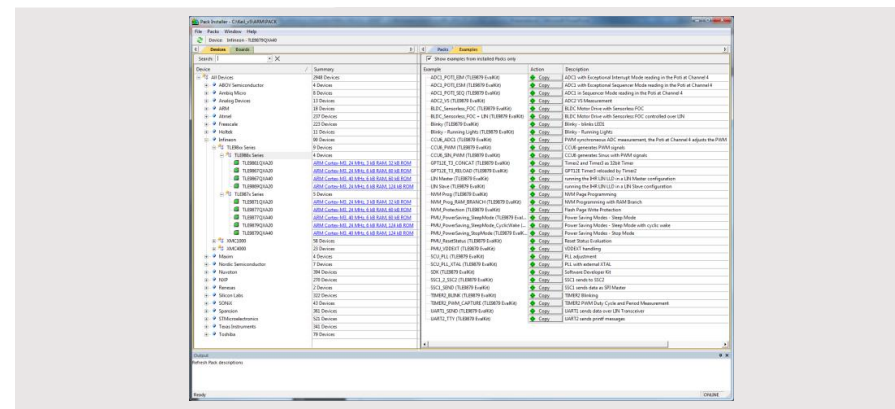
- > Download from: <https://www.keil.com/demo/eval/arm.htm>



Main Window



Pack Installer



Toolchain installation: 2/4

Infineon **IFXConfigWizard**

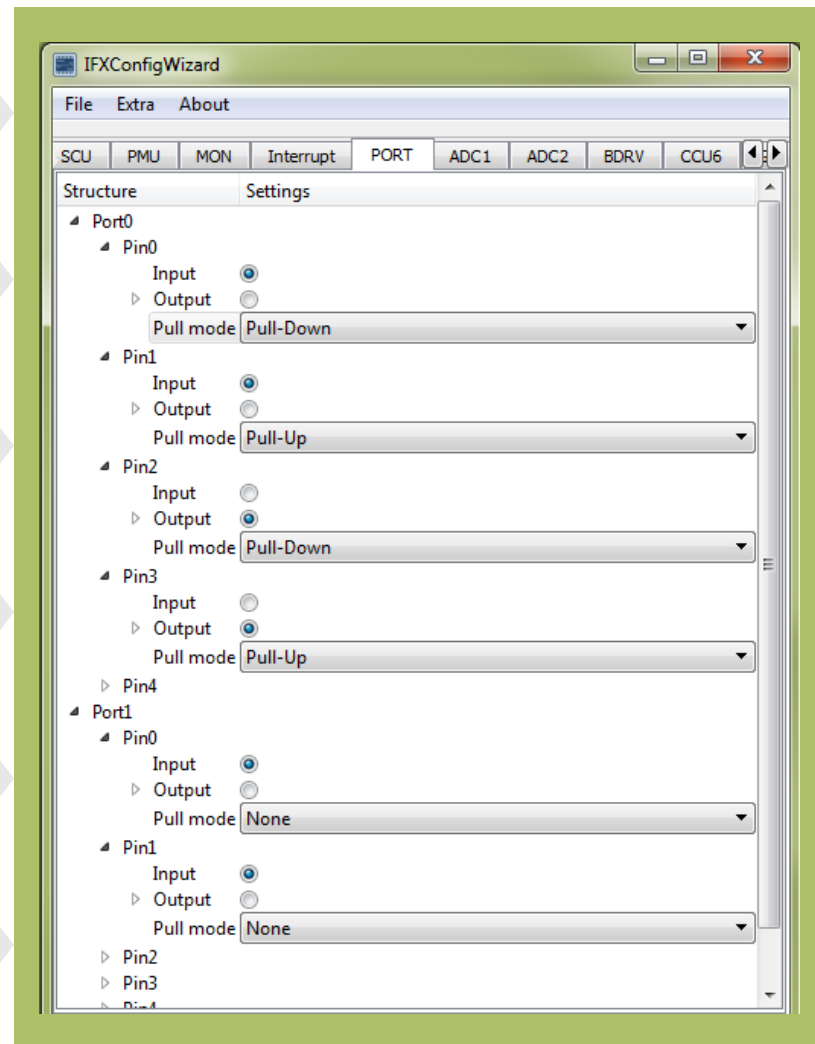
Configuration of chip modules

Infineon homepage: [IFXConfigWizard](http://www.infineon.com/ifxconfigwizard)

Latest version: V1.8.6

Device description for TLE986x/TLE987x included

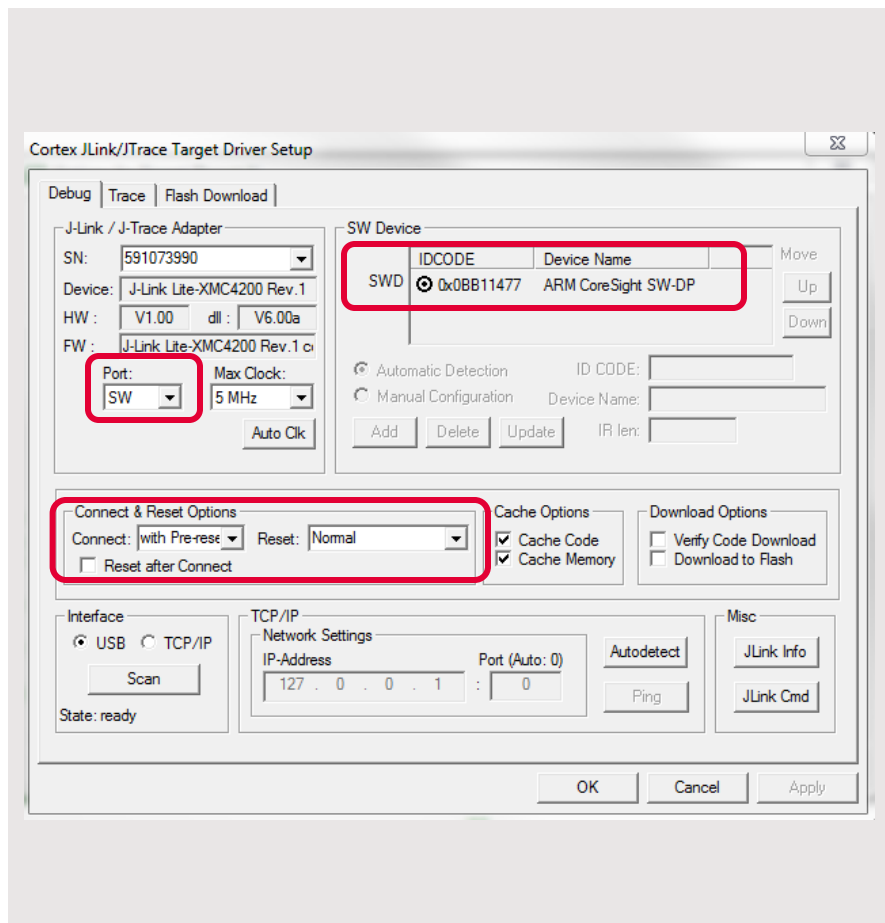
TLE984x supported with Keil μ Vision 5



Toolchain installation: 3/4

Segger J-LINK-Lite driver:

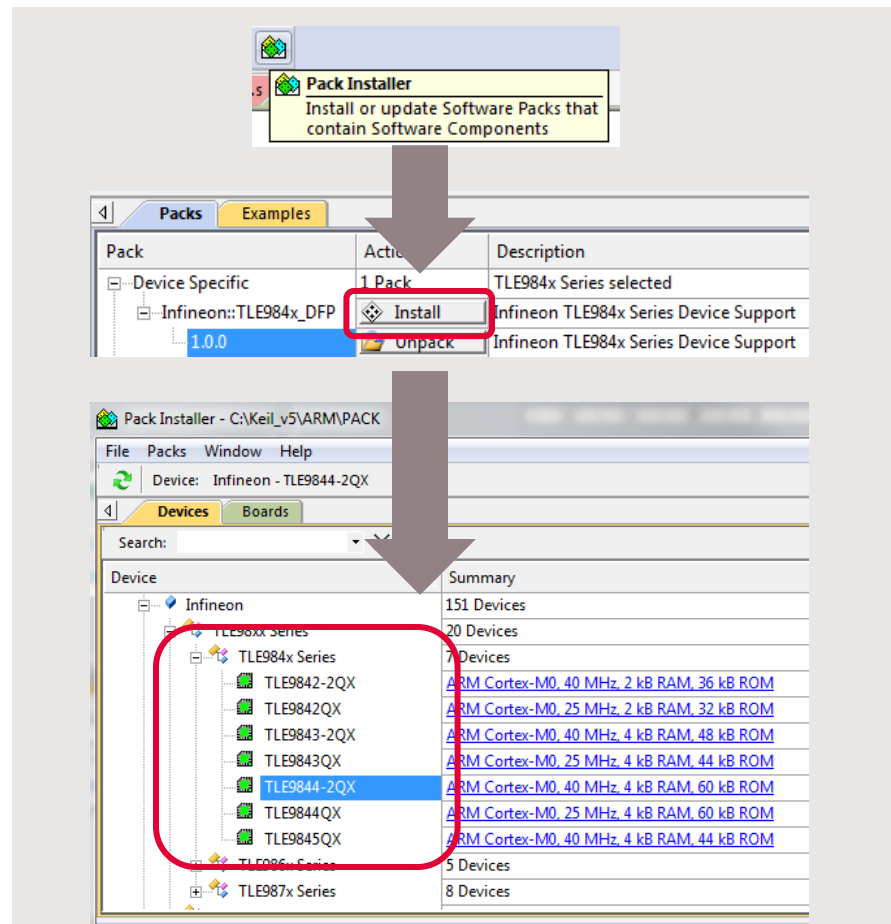
- > Driver for "on-board" or "stand-alone" debugger
- > Install driver from: <https://www.segger.com/jlink-software.html>
- > TLE9845QX support is included from V5.10 upwards



Toolchain installation: 4/4

PACK-file TLE984x for μ Vision5:

- > Device database for all TLE984x variants
- > Device support for flashing/erasing TLE984x
- > SFR description for register debugging
- > Device description for TLE984x for Config Wizard (XML)
- > Includes SDK (Software Development Kit)
- > Code examples included





Part of your life. Part of tomorrow.

