

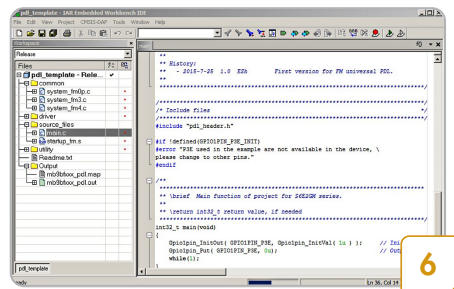
- Launch the Serial Port Viewer tool from the start menu
- Click on the Serial Port Viewer icon in the notification area of the taskbar and select FM-Link/CMSIS-DAP Cypress FM Communications Port



- Configure the baud rate as 115200
- Click the Disconnected button to connect
- Press Enter on your PC keyboard to run the board test demo

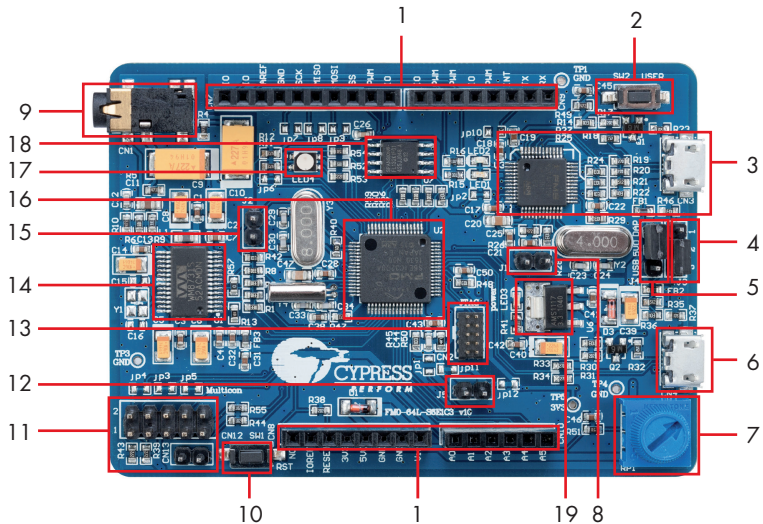


- Key in the option 02 and press Enter to change the RGB LED color from Red to Green to Blue. For more information on the test procedures, refer to the kit user guide



- Use IAR Embedded Workbench or Keil uVision IDE to develop code examples on this kit

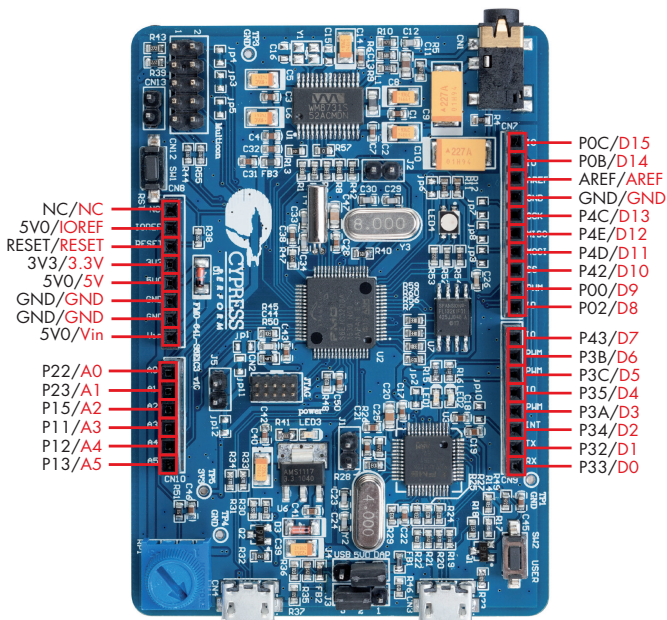
## FM0+ S6E1C-Series Starter Board Details



- |  |  |
|--|--|
| 1. Arduino interface (CN7-CN10)                  | 10. Reset button                         |
| 2. User button                                   | 11. Multicon connector (CN12, CN13)      |
| 3. MB9AF312K Programmer and debugger (CMSIS-DAP) | 12. Jumper for current measure (J5)      |
| 4. Serial programming mode select (J3)           | 13. 10-pin JTAG connector                |
| 5. Power supply resource select (J4)             | 14. Stereo codec                         |
| 6. USB device connector (CN4)                    | 15. Programming mode jumper of FM0+ (J2) |
| 7. Potentiometer                                 | 16. Cypress FM0+ MCU S6E1C32D0A          |
| 8. Programming mode jumper of MB9AF312K (J1)     | 17. RGB LED                              |
| 9. Headphone and microphone jack (CN1)           | 18. Cypress 4-Mb NOR Flash               |
|  | 19. 3.3V Voltage Regulator               |

# FM0+ S6E1C-SERIES STARTER KIT

## FM0+ S6E1C-Series Starter Board Details



- Arduino interface
- FM0+ S6E1C-Series Starter Kit
- NC- Not connected

For the latest information about this kit, visit [www.cypress.com/FM0-64L-S6E1C3](http://www.cypress.com/FM0-64L-S6E1C3)