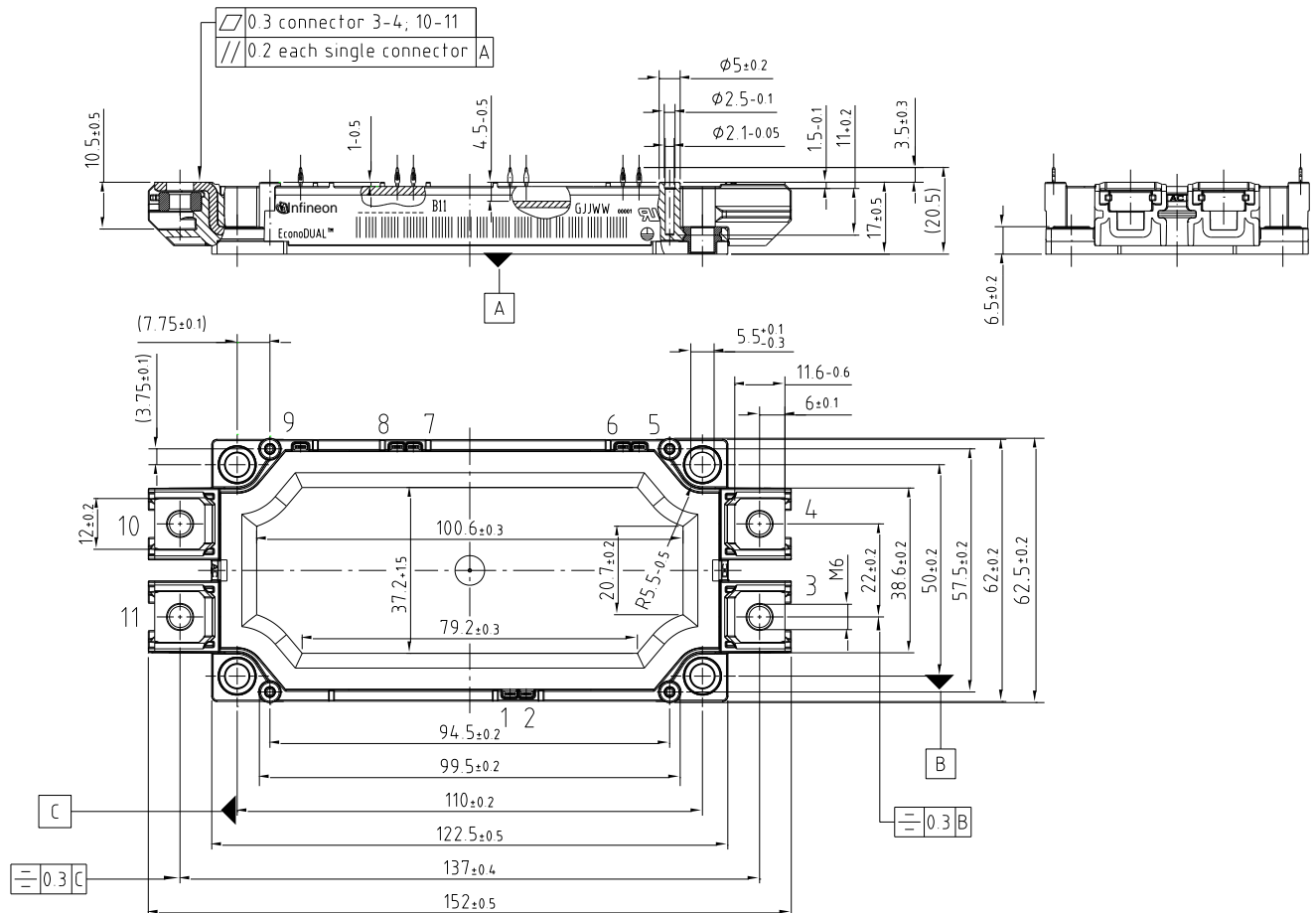
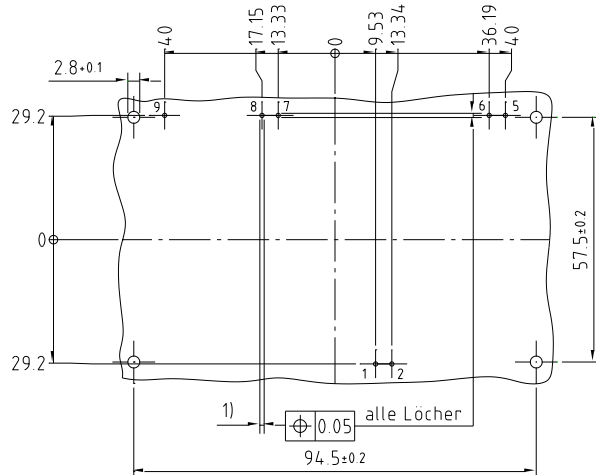


Package outline EconoDUAL™3 module AG-ECONOD-3-2



Leiterplatten-Lochbild / PCB drillhole pattern



- 1)
 $\phi 1.0^{+0.09}_{-0.06}$ Durchmesser des metallierten Loches
 $\phi 1.0^{+0.09}_{-0.06}$ Diameter of finished plated-through hole
 $\phi 1.15$ Bohrungsdurchmesser des Loches
 $\phi 1.15$ Diameter of drilled hole

