

Highly insulated module**Features**

- Electrical features
 - $V_{CES} = 6500 \text{ V}$
 - $I_{Cnom} = 600 \text{ A} / I_{CRM} = 1200 \text{ A}$
- Mechanical features
 - Package with enhanced insulation of 10.4 kV AC 60 s
 - Package with CTI > 600
 - ALSiC base plate for increased thermal cycling capability
 - High creepage and clearance distances
 - Extended storage temperature down to $T_{stg} = -55 \text{ °C}$

**Potential applications**

- Traction drives
- Medium-voltage converters

Product validation

- Qualified for industrial applications according to the relevant tests of IEC 60747, 60749 and 60068

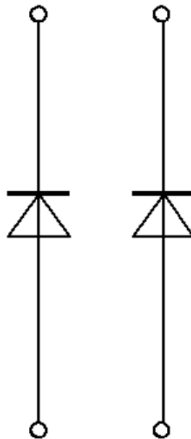
Description

Table of contents

	Description	1
	Features	1
	Potential applications	1
	Product validation	1
	Table of contents	2
1	Package	3
2	Diode, Inverter	3
3	Characteristics diagrams	5
4	Circuit diagram	7
5	Package outlines	8
6	Module label code	9
	Revision history	10
	Disclaimer	11

1 Package

Table 1 Insulation coordination

Parameter	Symbol	Note or test condition	Values	Unit
Isolation test voltage	V_{ISOL}	RMS, $f = 50 \text{ Hz}$, $t = 60 \text{ s}$	10.4	kV
Partial discharge extinction voltage	V_{isol}	RMS, $f = 50 \text{ Hz}$, Q_{PD} typ. 10 pC	5.1	kV
DC stability	$V_{CE(D)}$	$T_{vj}=25^{\circ}\text{C}$, 100 Fit	3800	V
Material of module baseplate			AlSiC	
Internal isolation		basic insulation (class 1, IEC 61140)	AlN	
Creepage distance	d_{Creep}	terminal to heatsink	64.0	mm
Creepage distance	d_{Creep}	terminal to terminal	56.0	mm
Clearance	d_{Clear}	terminal to heatsink	40.0	mm
Clearance	d_{Clear}	terminal to terminal	26.0	mm
Comparative tracking index	CTI		> 600	

Table 2 Characteristic values

Parameter	Symbol	Note or test condition	Values			Unit	
			Min.	Typ.	Max.		
Stray inductance module	L_{sCE}			25		nH	
Module lead resistance, terminals - chip	$R_{AA'+CC'}$	$T_C=25^{\circ}\text{C}$, per switch		0.37		mΩ	
Storage temperature	T_{stg}		-55		125	°C	
Mounting torque for module mounting	M	- Mounting according to valid application note	M6, Screw	4.25		5.75	Nm
Terminal connection torque	M	- Mounting according to valid application note	M8, Screw	8		10	Nm
Weight	G			1000		g	

Note: Dynamic Data valid in conjunction with FZ600R65KE3 module

2 Diode, Inverter

Table 3 Maximum rated values

Parameter	Symbol	Note or test condition	Values	Unit
Repetitive peak reverse voltage	V_{RRM}	$T_{vj} = -50^{\circ}\text{C}$	5900	V
		$T_{vj} = 25^{\circ}\text{C}$	6500	
		$T_{vj} = 125^{\circ}\text{C}$	6500	

(table continues...)

Table 3 (continued) Maximum rated values

Parameter	Symbol	Note or test condition	Values	Unit	
Continuous DC forward current	I_F		600	A	
Repetitive peak forward current	I_{FRM}	$t_P = 1 \text{ ms}$	1200	A	
I^2t - value	I^2t	$t_P = 10 \text{ ms}, V_R = 0 \text{ V}$	$T_{vj} = 125 \text{ }^\circ\text{C}$	300	kA^2s
Maximum power dissipation	P_{RQM}		$T_{vj} = 125 \text{ }^\circ\text{C}$	2400	kW
Minimum turn-on time	t_{onmin}		10	μs	

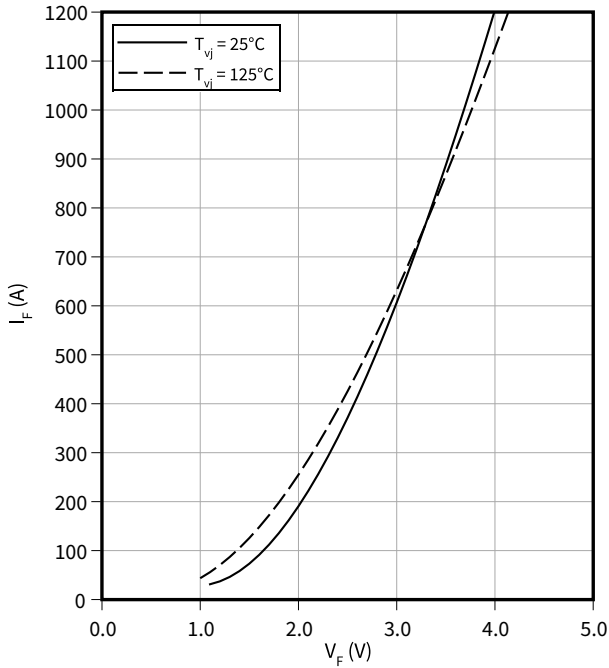
Table 4 Characteristic values

Parameter	Symbol	Note or test condition	Values			Unit
			Min.	Typ.	Max.	
Forward voltage	V_F	$I_F = 600 \text{ A}, V_{GE} = 0 \text{ V}$	$T_{vj} = 25 \text{ }^\circ\text{C}$	3.00	3.50	V
			$T_{vj} = 125 \text{ }^\circ\text{C}$	2.95	3.50	
Peak reverse recovery current	I_{RM}	$V_R = 3600 \text{ V}, I_F = 600 \text{ A}, V_{GE} = -15 \text{ V}, -di_F/dt = 2400 \text{ A}/\mu\text{s} (T_{vj} = 125 \text{ }^\circ\text{C})$	$T_{vj} = 25 \text{ }^\circ\text{C}$	900		A
			$T_{vj} = 125 \text{ }^\circ\text{C}$	1000		
Recovered charge	Q_r	$V_R = 3600 \text{ V}, I_F = 600 \text{ A}, V_{GE} = -15 \text{ V}, -di_F/dt = 2400 \text{ A}/\mu\text{s} (T_{vj} = 125 \text{ }^\circ\text{C})$	$T_{vj} = 25 \text{ }^\circ\text{C}$	700		μC
			$T_{vj} = 125 \text{ }^\circ\text{C}$	1300		
Reverse recovery energy	E_{rec}	$V_R = 3600 \text{ V}, I_F = 600 \text{ A}, V_{GE} = -15 \text{ V}, -di_F/dt = 2400 \text{ A}/\mu\text{s} (T_{vj} = 125 \text{ }^\circ\text{C})$	$T_{vj} = 25 \text{ }^\circ\text{C}$	1100		mJ
			$T_{vj} = 125 \text{ }^\circ\text{C}$	2400		
Thermal resistance, junction to case	R_{thJC}	per diode			22.0	K/kW
Thermal resistance, case to heat sink	R_{thCH}	per diode		16.5		K/kW
Temperature under switching conditions	$T_{vj op}$		-50		125	$^\circ\text{C}$

3 Characteristics diagrams

Forward characteristic (typical), Diode, Inverter

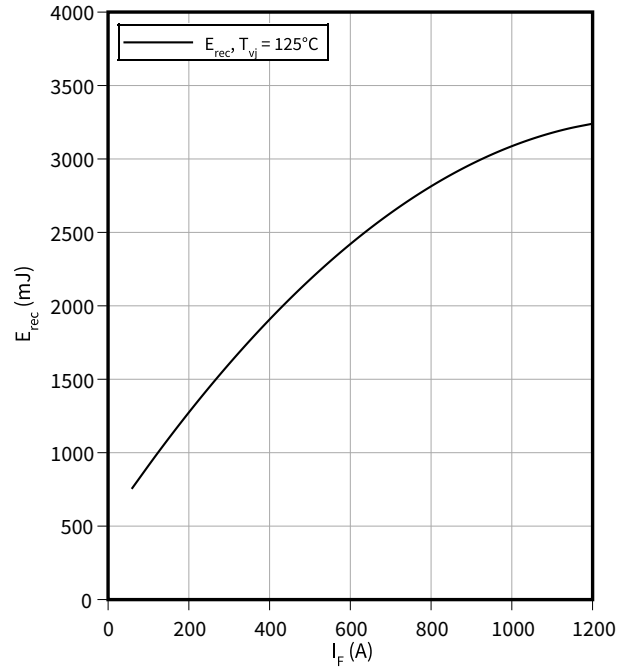
$I_F = f(V_F)$



Switching losses (typical), Diode, Inverter

$E_{rec} = f(I_F)$

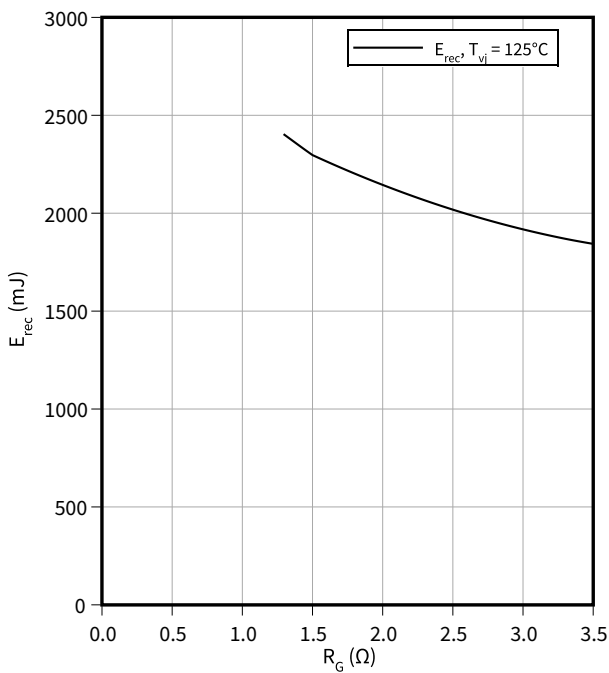
$V_{CE} = 3600\text{ V}, R_{Gon} = R_{Gon}(\text{IGBT})$



Switching losses (typical), Diode, Inverter

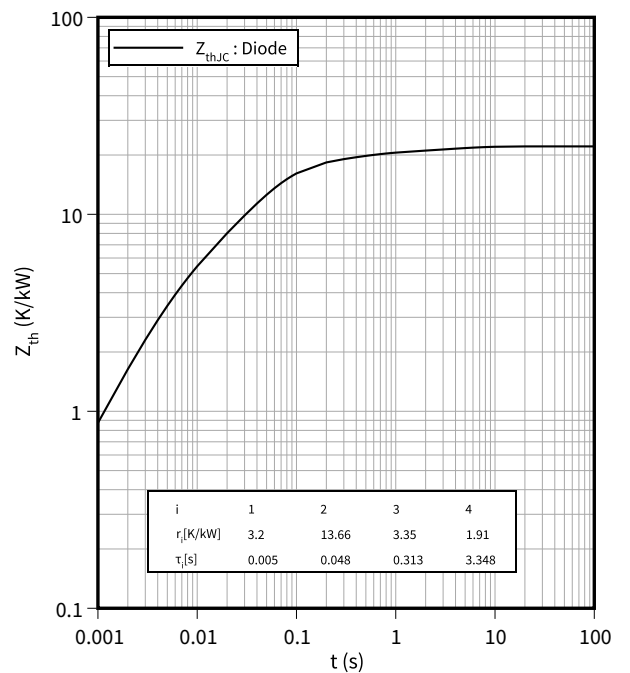
$E_{rec} = f(R_G)$

$V_{CE} = 3600\text{ V}, I_F = 600\text{ A}$



Transient thermal impedance, Diode, Inverter

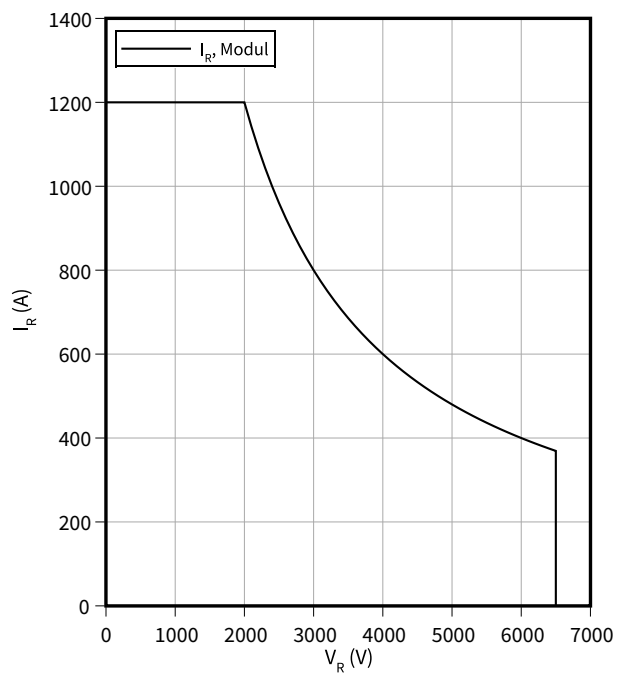
$Z_{th} = f(t)$



Safe operating area (SOA), Diode, Inverter

$$I_R = f(V_R)$$

$$T_{vj} = 125\text{ °C}$$



4 Circuit diagram

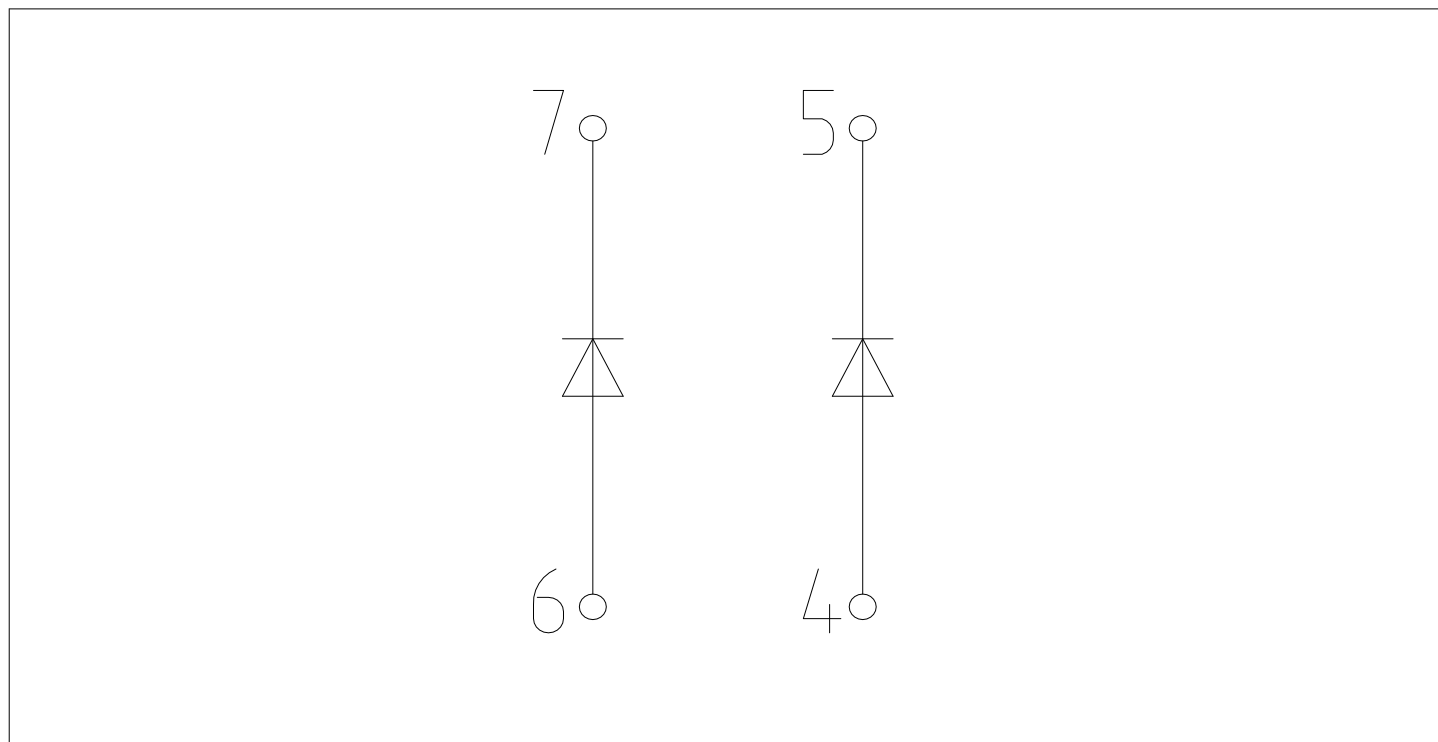


Figure 1

5 Package outlines

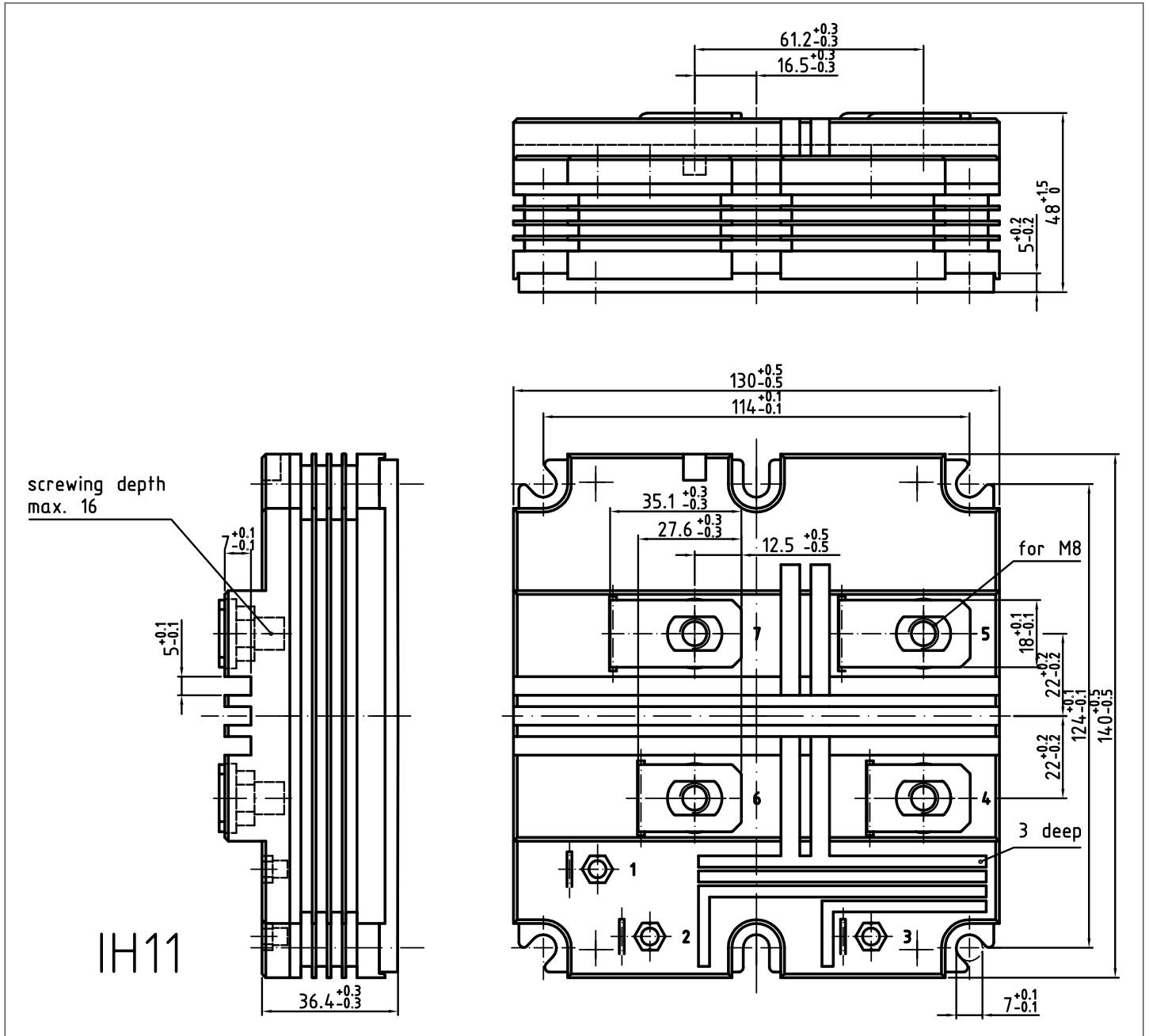


Figure 2

6 Module label code


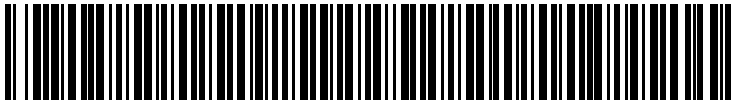
Module label code			
Code format	Data Matrix	Barcode Code128	
Encoding	ASCII text	Code Set A	
Symbol size	16x16	23 digits	
Standard	IEC24720 and IEC16022	IEC8859-1	
Code content	<i>Content</i> Module serial number Module material number Production order number Date code (production year) Date code (production week)	<i>Digit</i> 1 - 5 6 - 11 12 - 19 20 - 21 22 - 23	<i>Example</i> 71549 142846 55054991 15 30
Example	<div style="display: flex; justify-content: space-around; align-items: center;"> <div style="text-align: center;">  71549142846550549911530 </div> <div style="text-align: center;">  71549142846550549911530 </div> </div>		

Figure 3

Revision history

Document revision	Date of release	Description of changes
V1.0	2012-04-16	Target datasheet
V2.0	2012-05-29	Preliminary datasheet
V2.1	2013-03-12	Preliminary datasheet
V3.0	2018-01-15	Final datasheet
n/a	2020-09-01	Datasheet migrated to a new system with a new layout and new revision number schema: target or preliminary datasheet = 0.xy; final datasheet = 1.xy
1.10	2022-04-12	Final datasheet

Trademarks

All referenced product or service names and trademarks are the property of their respective owners.

Edition 2022-04-12

Published by

Infineon Technologies AG

81726 Munich, Germany

© 2022 Infineon Technologies AG

All Rights Reserved.

Do you have a question about any aspect of this document?

Email: erratum@infineon.com

Document reference

IFX-AAX073-005

IMPORTANT NOTICE

The information given in this document shall in no event be regarded as a guarantee of conditions or characteristics ("Beschaffheitsgarantie").

With respect to any examples, hints or any typical values stated herein and/or any information regarding the application of the product, Infineon Technologies hereby disclaims any and all warranties and liabilities of any kind, including without limitation warranties of non-infringement of intellectual property rights of any third party.

In addition, any information given in this document is subject to customer's compliance with its obligations stated in this document and any applicable legal requirements, norms and standards concerning customer's products and any use of the product of Infineon Technologies in customer's applications.

The data contained in this document is exclusively intended for technically trained staff. It is the responsibility of customer's technical departments to evaluate the suitability of the product for the intended application and the completeness of the product information given in this document with respect to such application.

WARNINGS

Due to technical requirements products may contain dangerous substances. For information on the types in question please contact your nearest Infineon Technologies office.

Except as otherwise explicitly approved by Infineon Technologies in a written document signed by authorized representatives of Infineon Technologies, Infineon Technologies' products may not be used in any applications where a failure of the product or any consequences of the use thereof can reasonably be expected to result in personal injury.