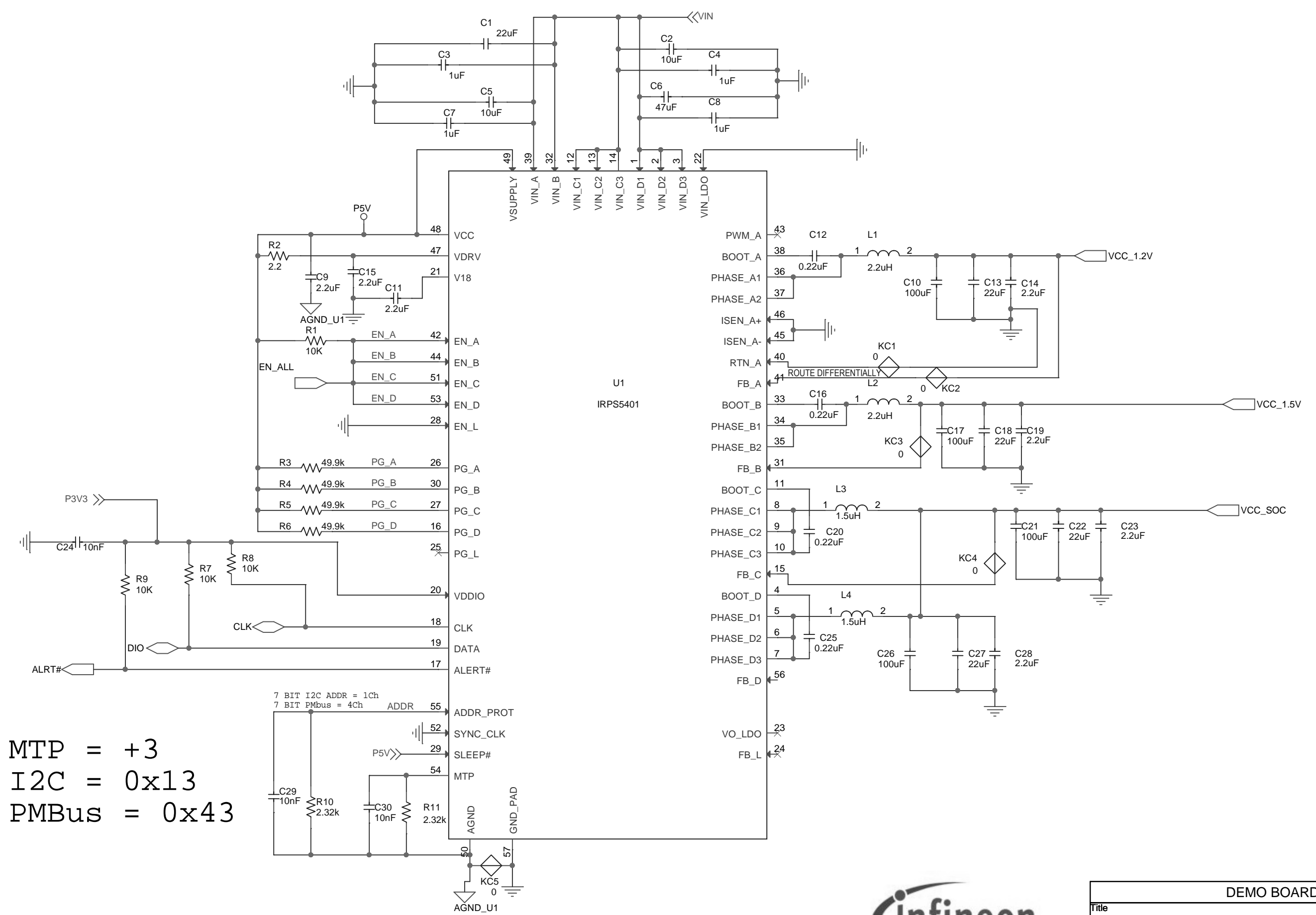


MTP = +3  
I2C = 0x13  
PMBus = 0x43

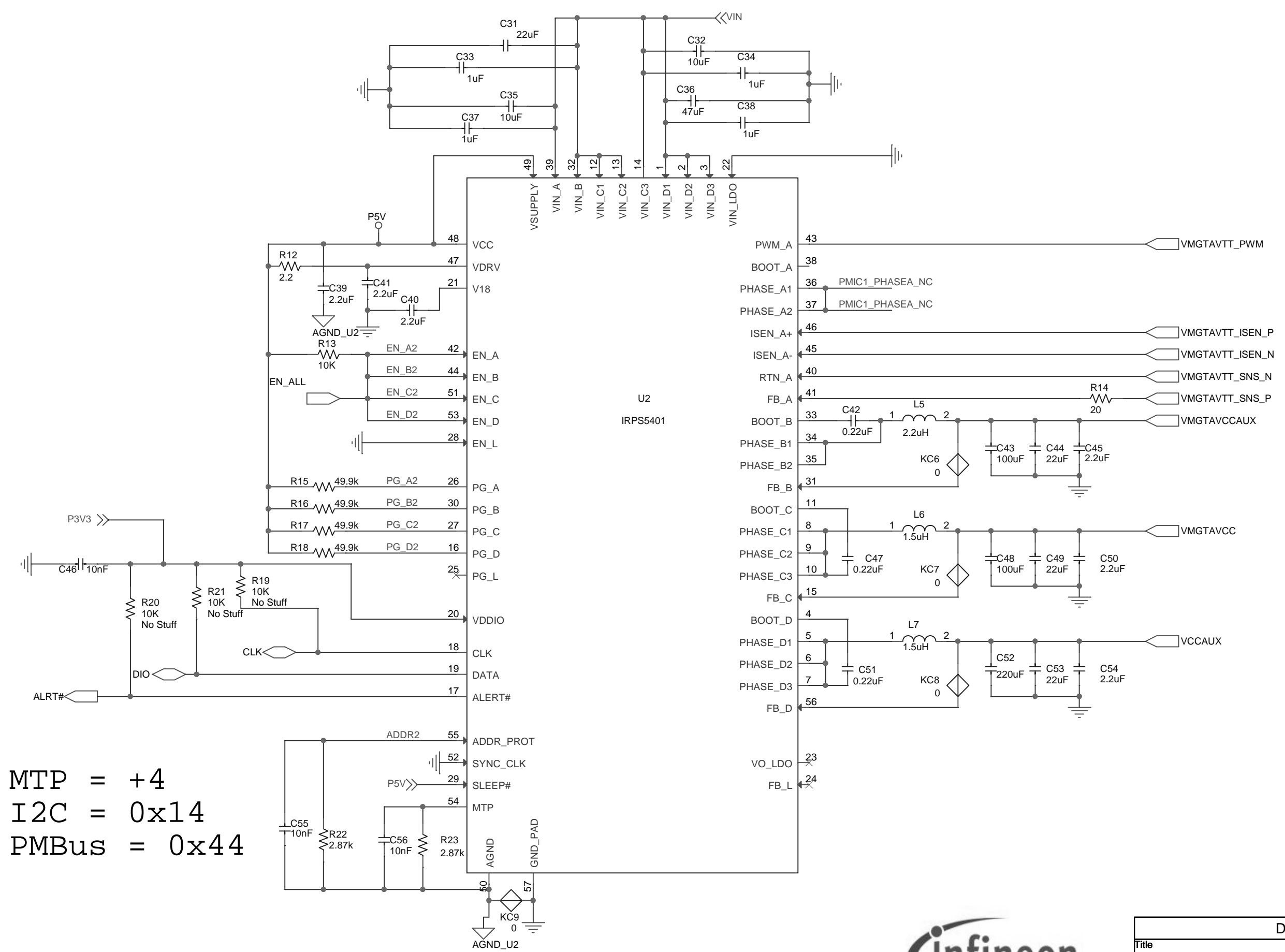


- PG\_A
- PG\_B
- PG\_C
- PG\_D



DEMO BOARD			
Title			
XILINX_VERSAL_VC1902_UC2			
Size	Document Number		Rev
B	SCH_EV121-D		E1
Date:	Thursday, April 04, 2019		Sheet 1 of 10

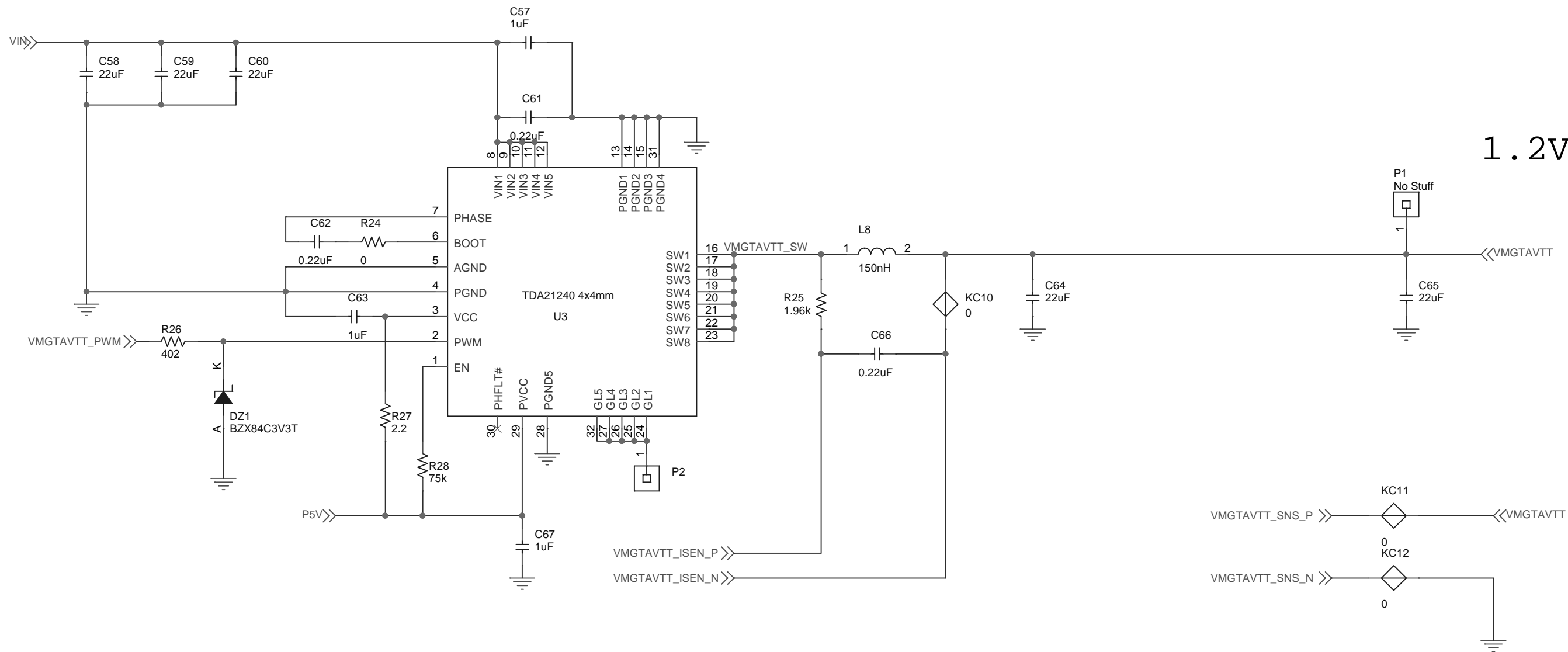
MTP = +4  
I2C = 0x14  
PMBus = 0x44



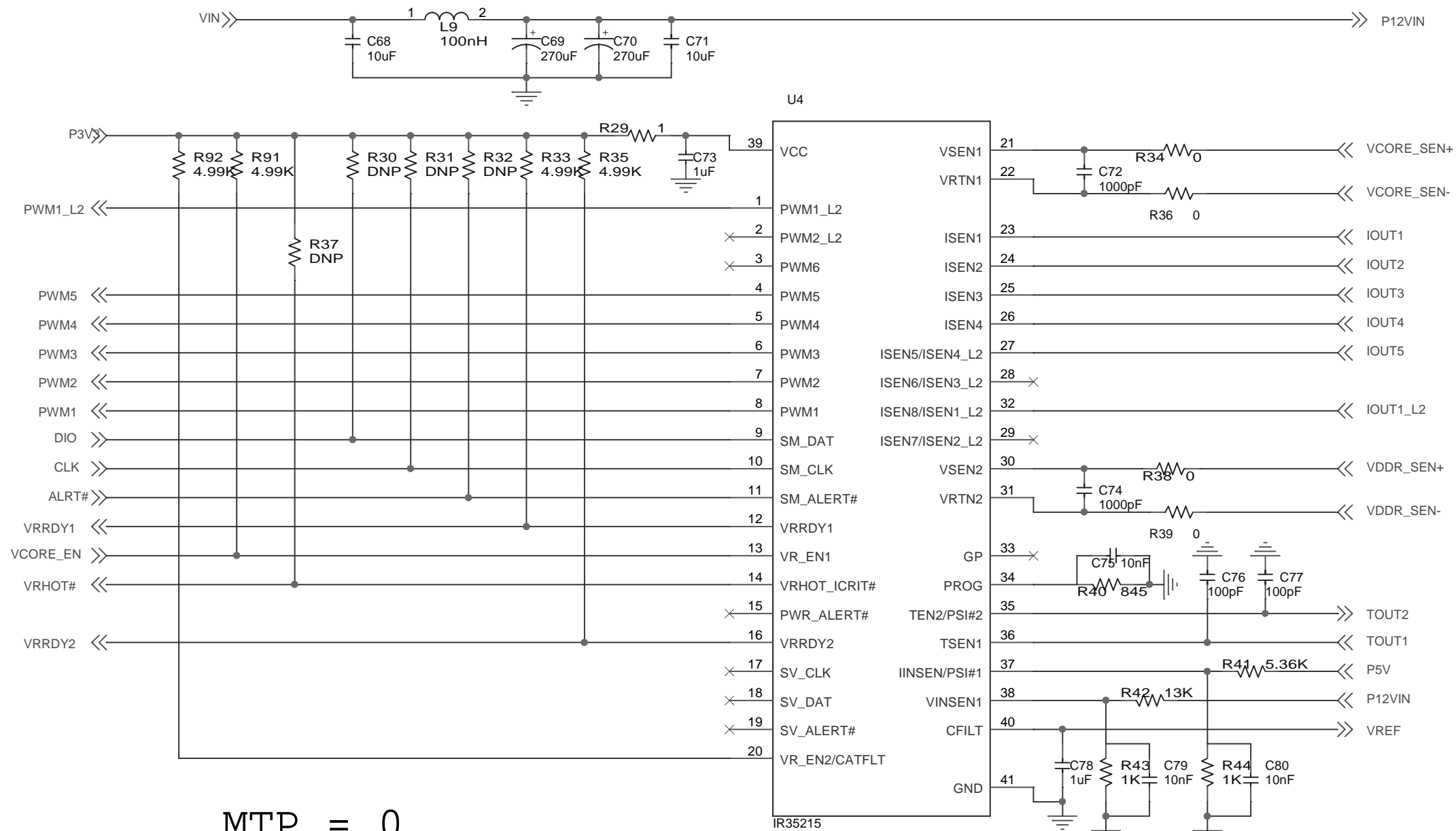
- PG\_A2
- PG\_B2
- PG\_C2
- PG\_D2



DEMO BOARD			
Title			
XILINX_VERSAL_VC1902_UC2			
Size	Document Number		Rev
B	SCH_EV121-D		E1
Date:	Thursday, April 04, 2019		Sheet 2 of 10



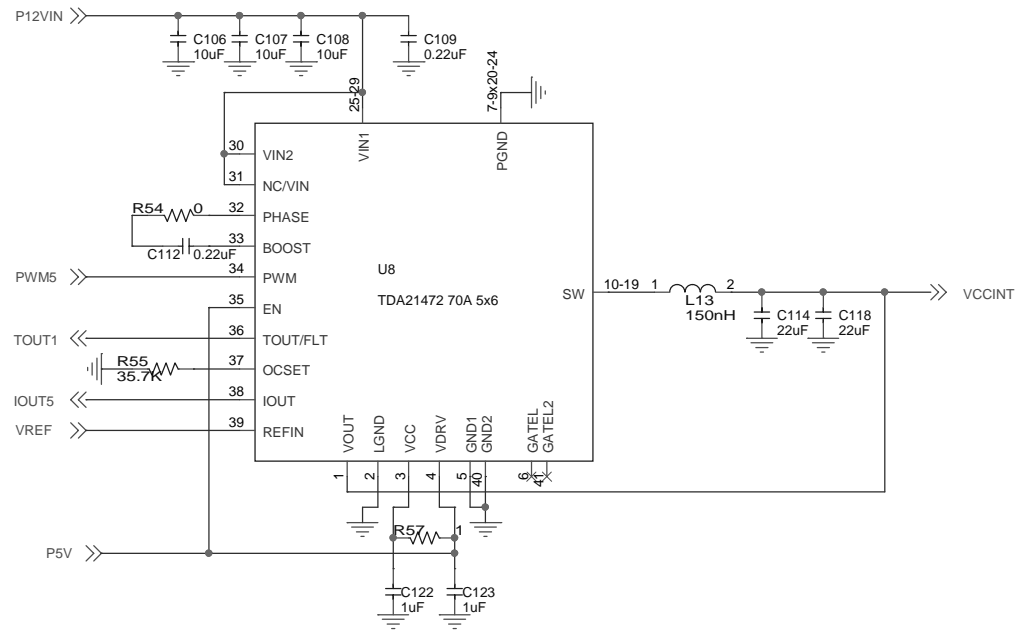
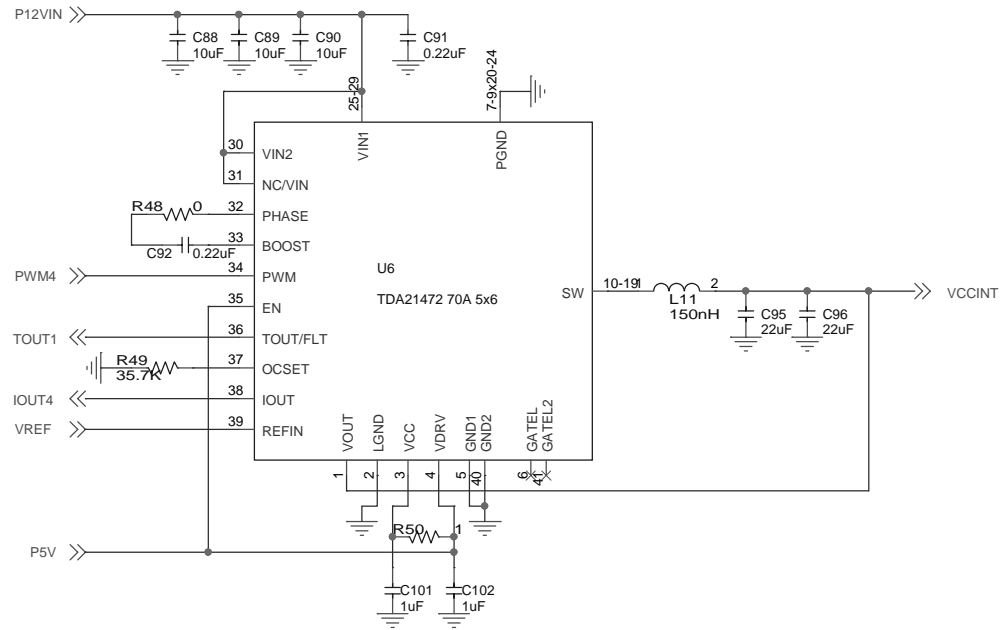
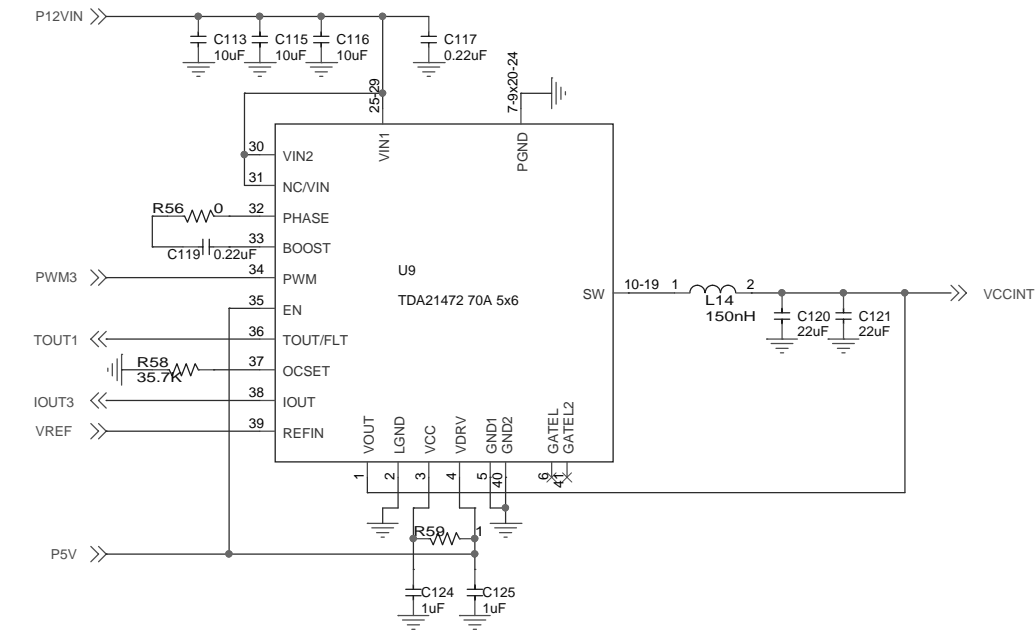
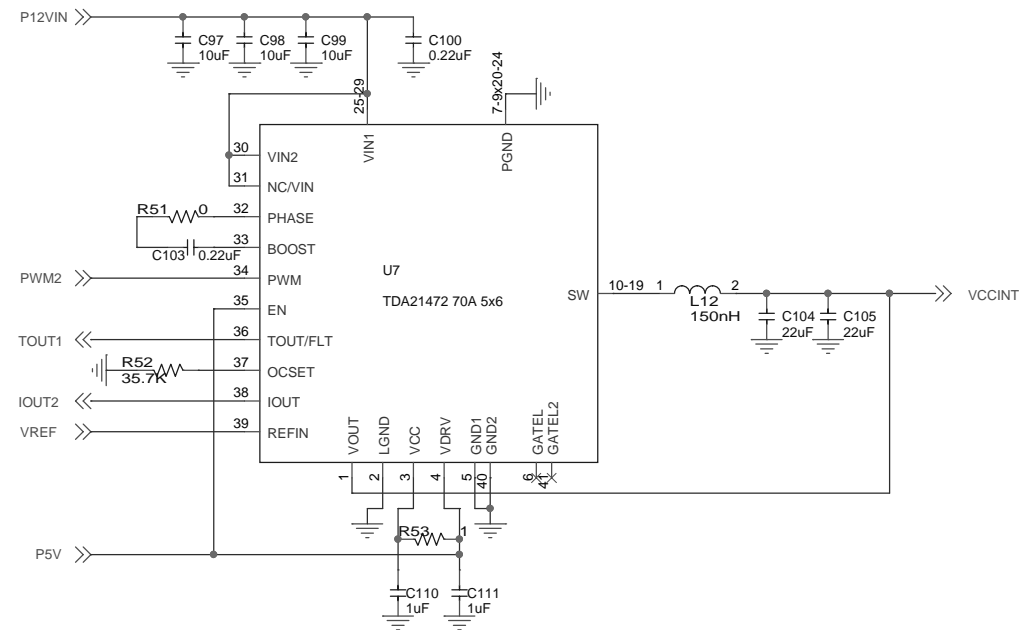
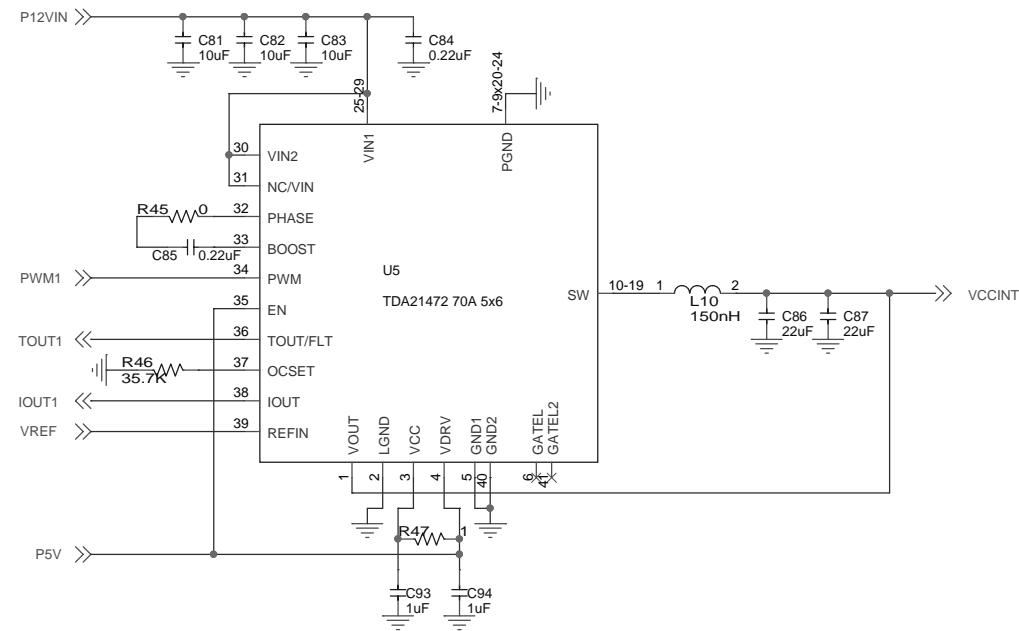
DEMO BOARD			
Title			
XILINX_VERSAL_VC1902_UC2			
Size	Document Number		Rev
B	SCH_EV121-D		E1
Date:	Friday, April 05, 2019		Sheet 3 of 10



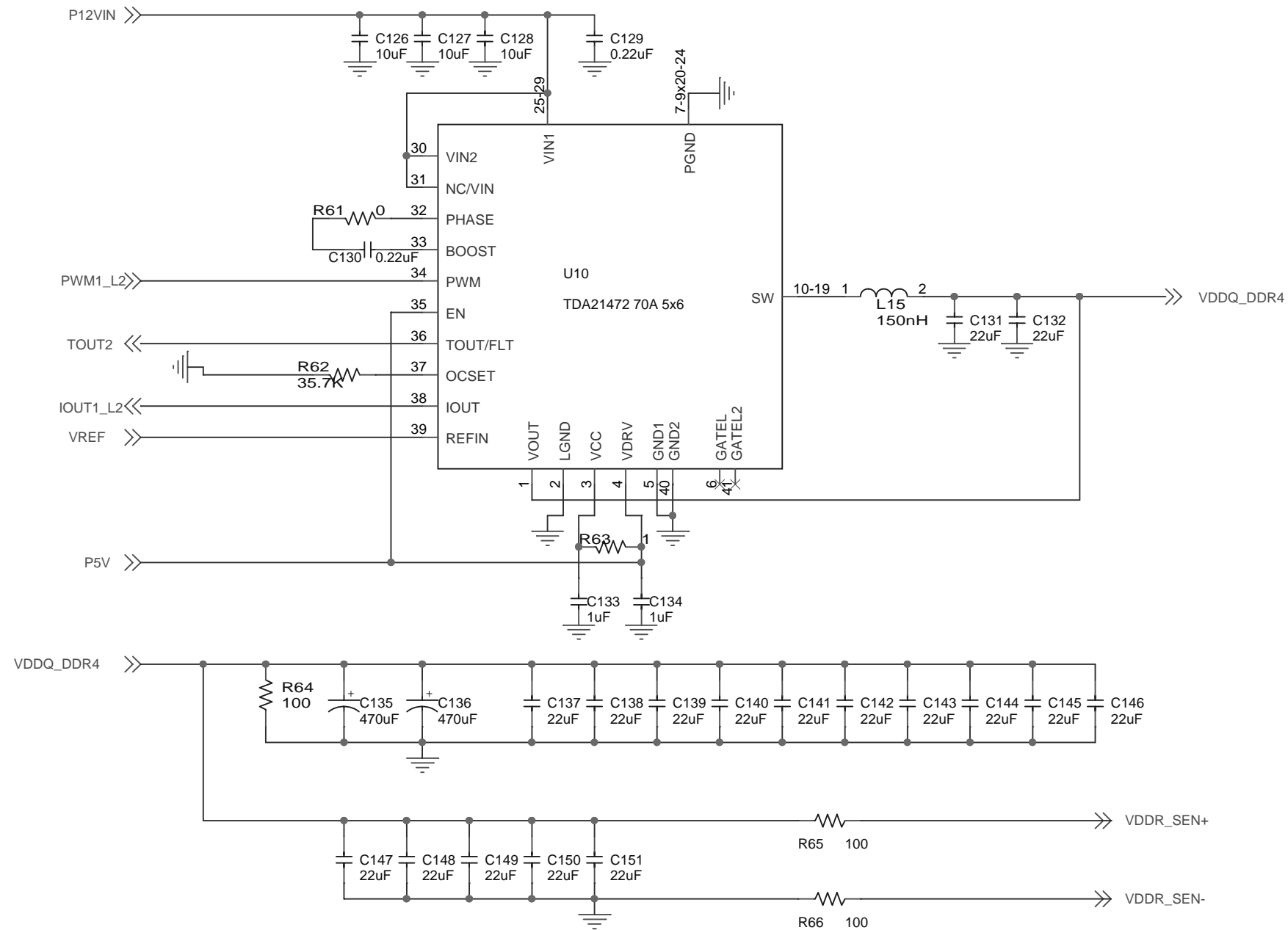
MTP = 0  
I2C = 0x10  
PMBus = 0x40



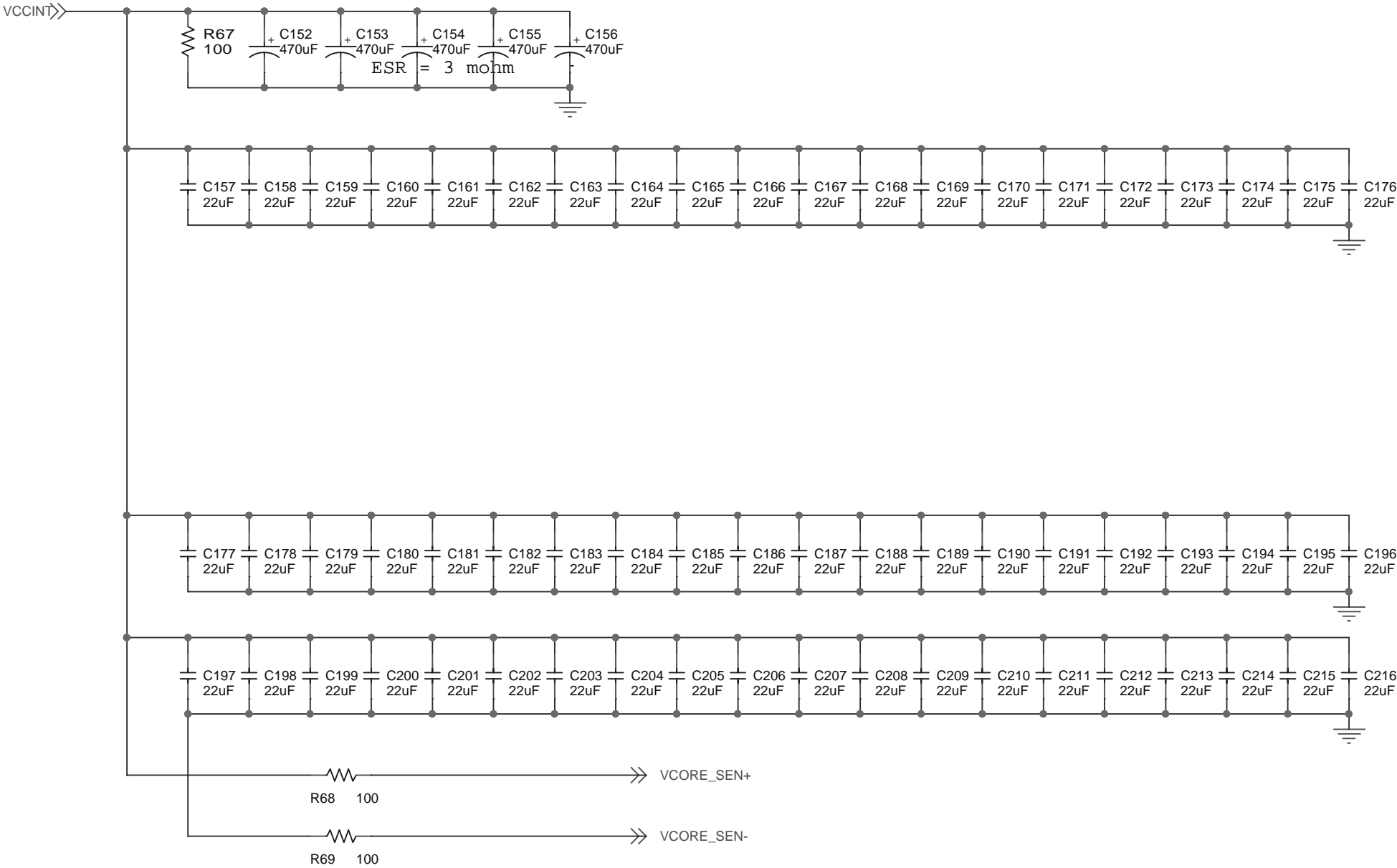
DEMO BOARD			
Title			
XILINX_VERSAL_VC1902_UC2			
Size	Document Number		Rev
B	SCH_EV121-D		E1
Date:	Wednesday, April 03, 2019		Sheet 4 of 10



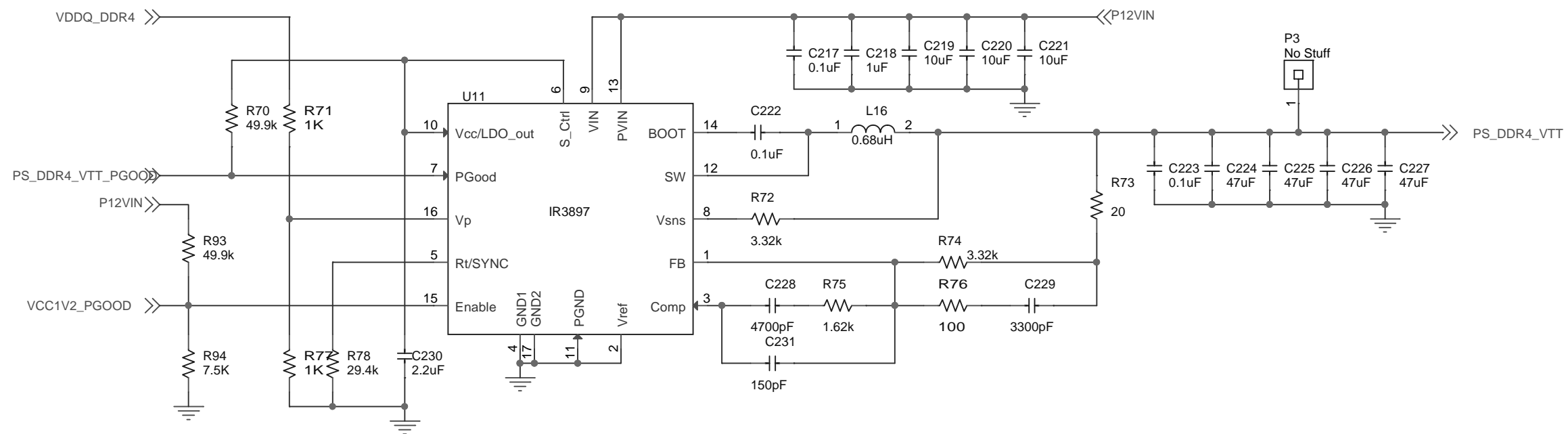
DEMO BOARD			
Title		XILINX_VERSAL_VC1902_UC2	
Size	Document Number	Rev	
Custom	SCH_EV121-D	E1	
Date:	Tuesday, April 02, 2019	Sheet	5 of 10



DEMO BOARD		
Title		
XILINX_VERSAL_VC1902_UC2		
Size	Document Number	Rev
B	SCH_EV121-D	E1
Date:	Friday, April 05, 2019	Sheet 6 of 10

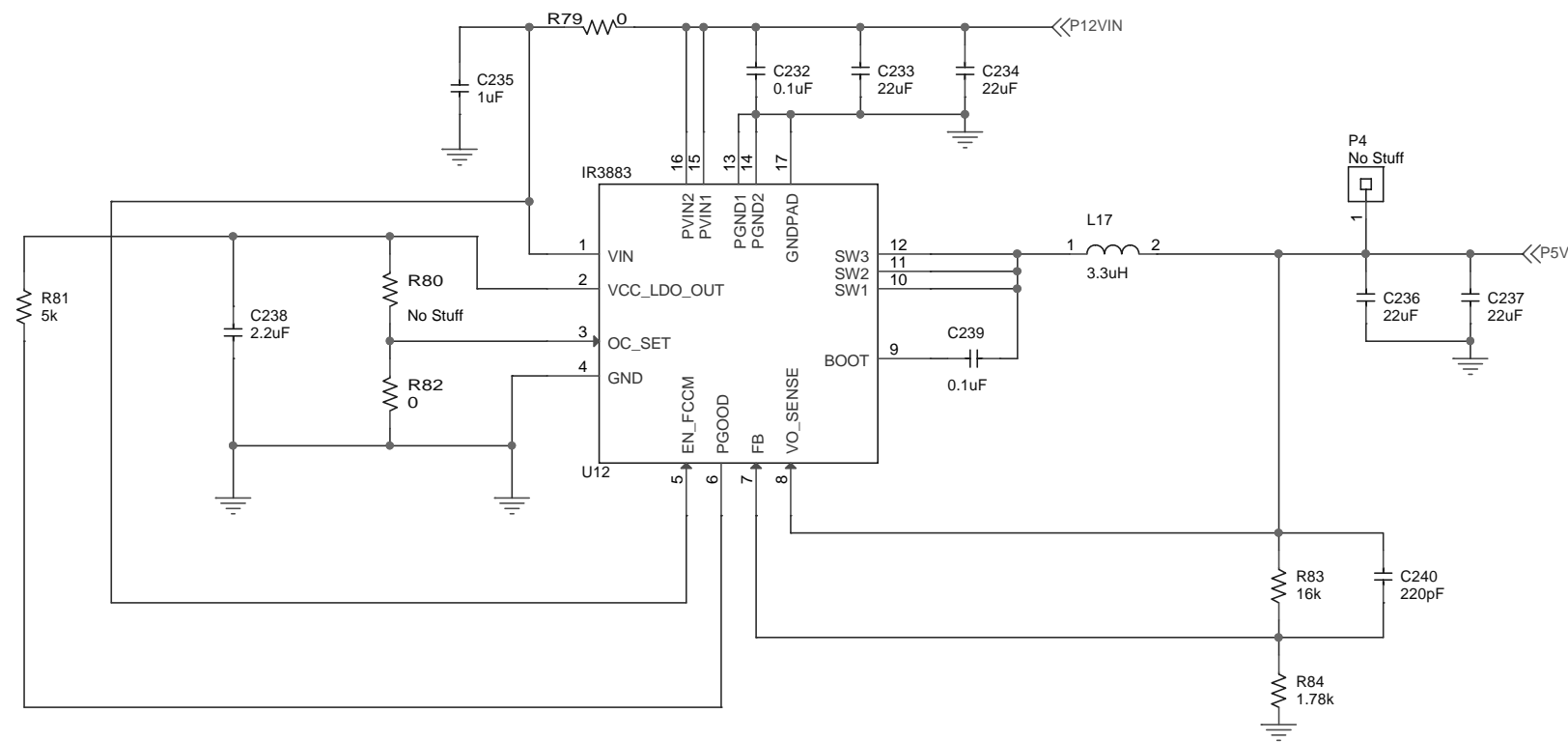


DEMO BOARD			
Title XILINX_VERSAL_VC1902_UC2			
Size <b>B</b>	Document Number <b>SCH_EV121-D</b>		Rev <b>E1</b>
Date:	Friday, April 05, 2019	Sheet 7 of 10	1

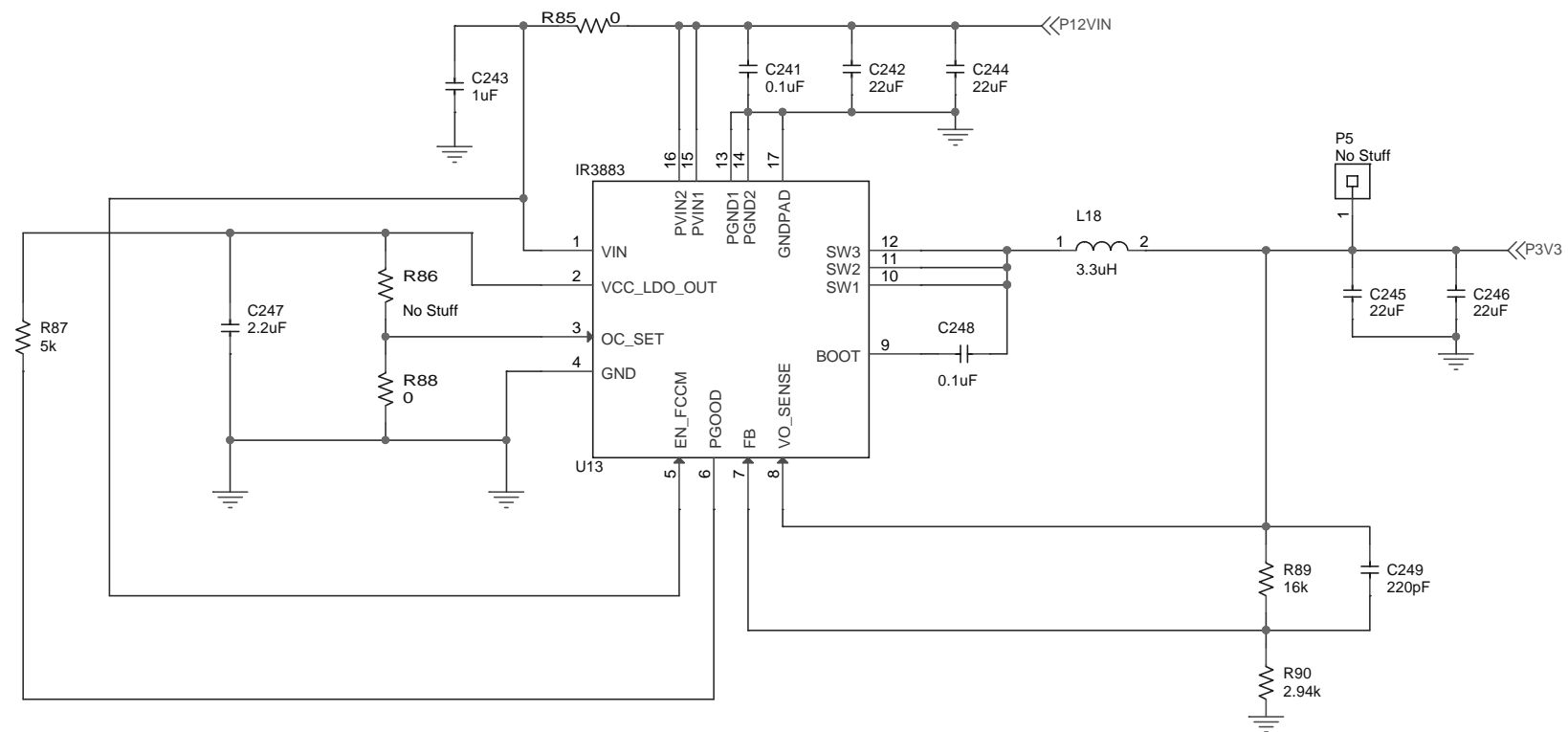


DEMO BOARD			
Title XILINX_VERSAL_VC1902_UC2			
Size <b>B</b>	Document Number <b>SCH_EV121-D</b>		Rev <b>E1</b>
Date:	Monday, April 01, 2019	Sheet 8 of 10	1





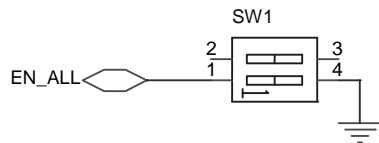
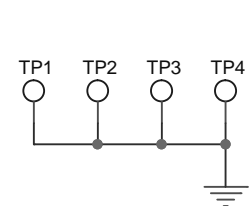
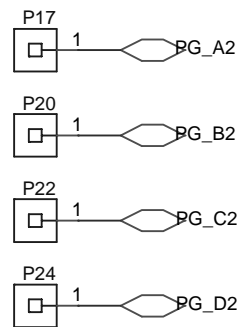
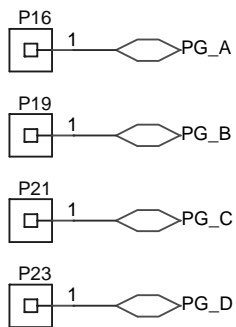
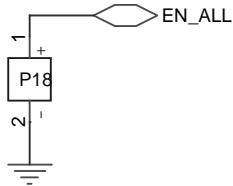
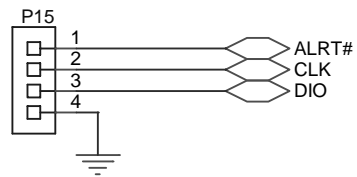
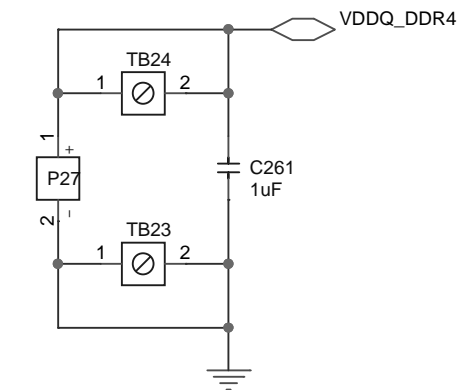
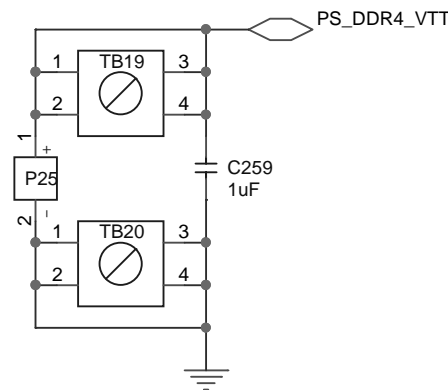
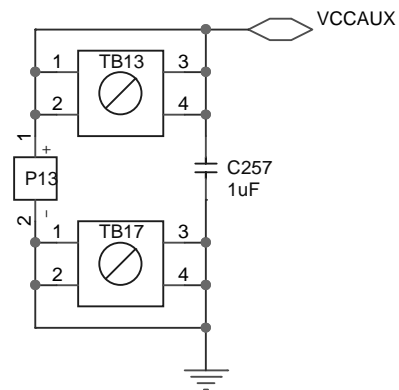
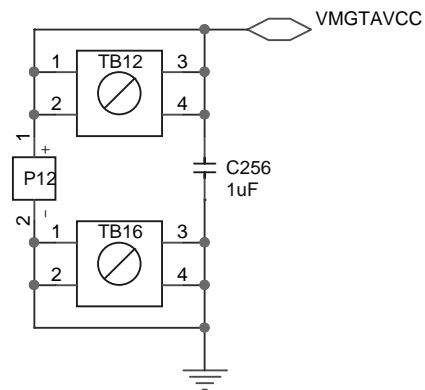
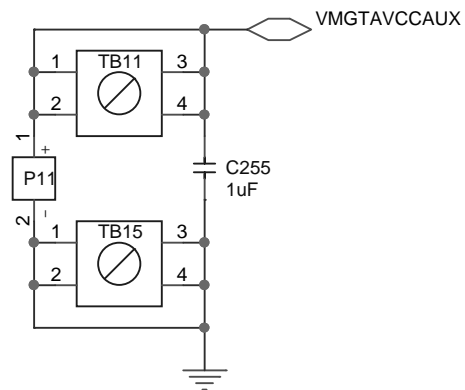
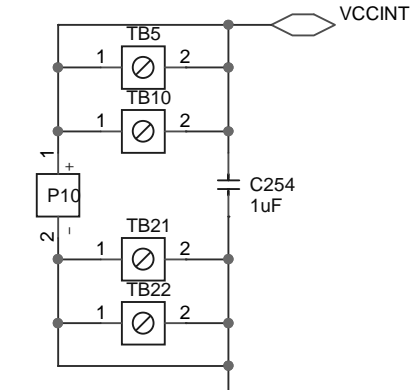
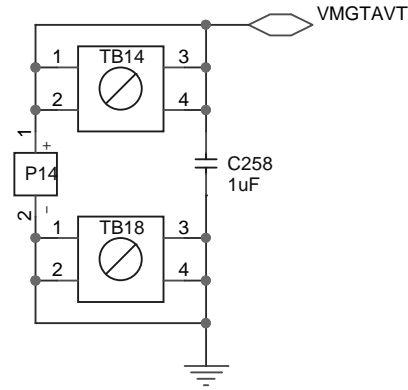
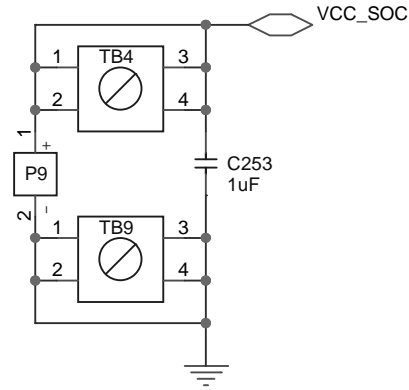
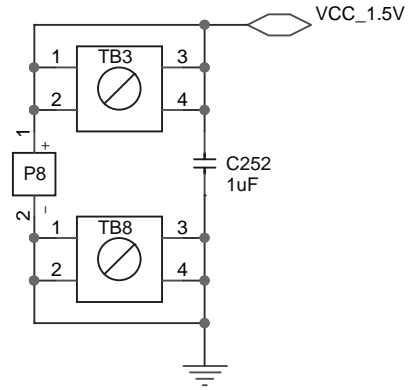
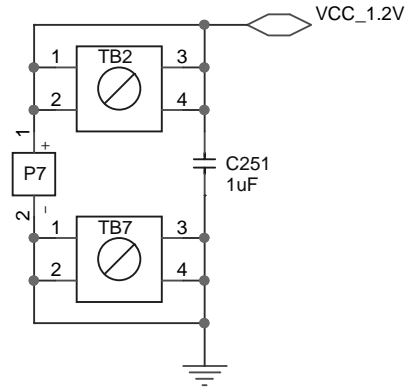
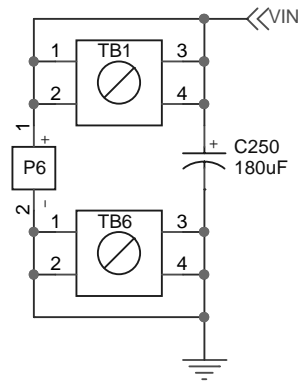
5.0V @ 3A



3.3V @ 3A



DEMO BOARD			
Title		XILINX_VERSAL_VC1902_UC2	
Size	Document Number	Rev	
Custom	SCH_EV121-D	E1	
Date:	Monday, April 01, 2019	Sheet	9 of 10



IRPS5401 EVAL BOARD			
Title			
ZYNQ 2320 CONFIG 4			
Size	Document Number		Rev
B	SCH_EV113-004		E1
Date:	Thursday, April 04, 2019		Sheet 10 of 10