



# XDPP1100 GUI installation guide

## Scope and purpose

The purpose of this document is to provide the necessary system requirements, installation and uninstallation procedures to test XDPP1100 controller.

## Intended audience

This document is intended for the application, firmware, software engineers and others who are interested in the installation of the XDPP1100 GUI to program and testing of the XDPP1100 controller.

## Table of contents

**Table of contents..... 1**

**1 XDPP1100 GUI installation ..... 2**

1.1 System requirements.....2

1.2 Download XDPP100 GUI .....2

1.3 Install XDPP1100 GUI.....2

1.4 Uninstall XDPP1100 GUI .....5

**2 Troubleshooting ..... 6**

2.1 Issue: USB driver is not recognized .....6

**Revision history.....10**

## XDPP1100 GUI installation

### 1 XDPP1100 GUI installation

#### 1.1 System requirements

- Ensure that you are connected to the internet.
- *Microsoft .NET Framework 4.0* must be installed. This can be downloaded [here](http://www.microsoft.com/en-us/download/details.aspx?id=17718) (if the link does not work, paste “<http://www.microsoft.com/en-us/download/details.aspx?id=17718>” without the quotes into your internet browser).
- You can check which version of .NET you have by following the instructions [here](http://support.microsoft.com/kb/318785) (if the link does not work, paste “<http://support.microsoft.com/kb/318785>” without the quotes into your internet browser).

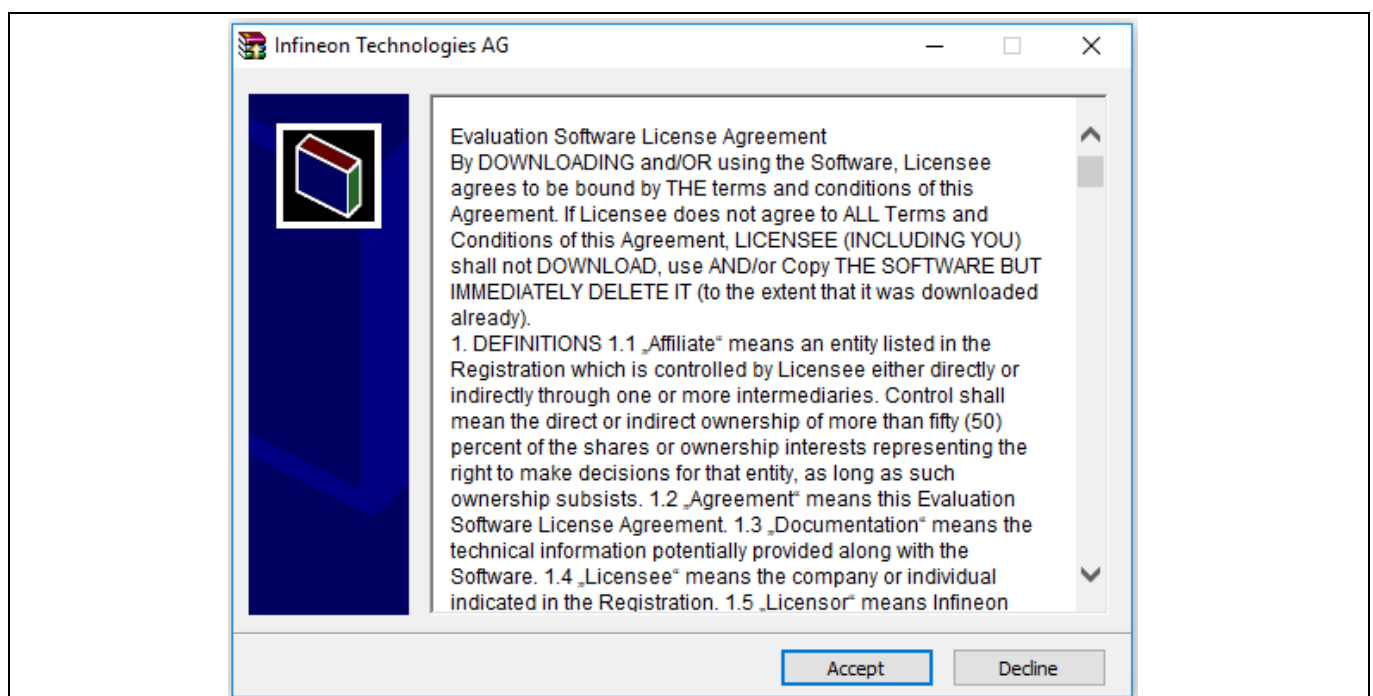
*Note: If you're using Windows 7 or 8, you may be prompted with a security warning whenever you run a program. For this setup, allow these programs to run.*

#### 1.2 Download XDPP100 GUI

- Download **XDPP1100InstallationPackage.zip** from below link and select **Save Target as**, when the dialog box pops up, navigate to **Desktop**. Click Save.
- [https://myicp.infineon.com/sites/power\\_management/Lists/defaultdoclib/GUI%20and%20FW%20Installation%20Package/XDPP1100InstallationPackage.zip?csf=1](https://myicp.infineon.com/sites/power_management/Lists/defaultdoclib/GUI%20and%20FW%20Installation%20Package/XDPP1100InstallationPackage.zip?csf=1)
- If you do not have permissions to access myicp website, reach out to below-mentioned contacts to get an access: [VenugopalReddy.ChintalaCheruvu@infineon.com](mailto:VenugopalReddy.ChintalaCheruvu@infineon.com) or [Helen.Ding@infineon.com](mailto:Helen.Ding@infineon.com) or [Kaisar.Ali@infineon.com](mailto:Kaisar.Ali@infineon.com)
- Unzip XDPP1100InstallationPackage.zip

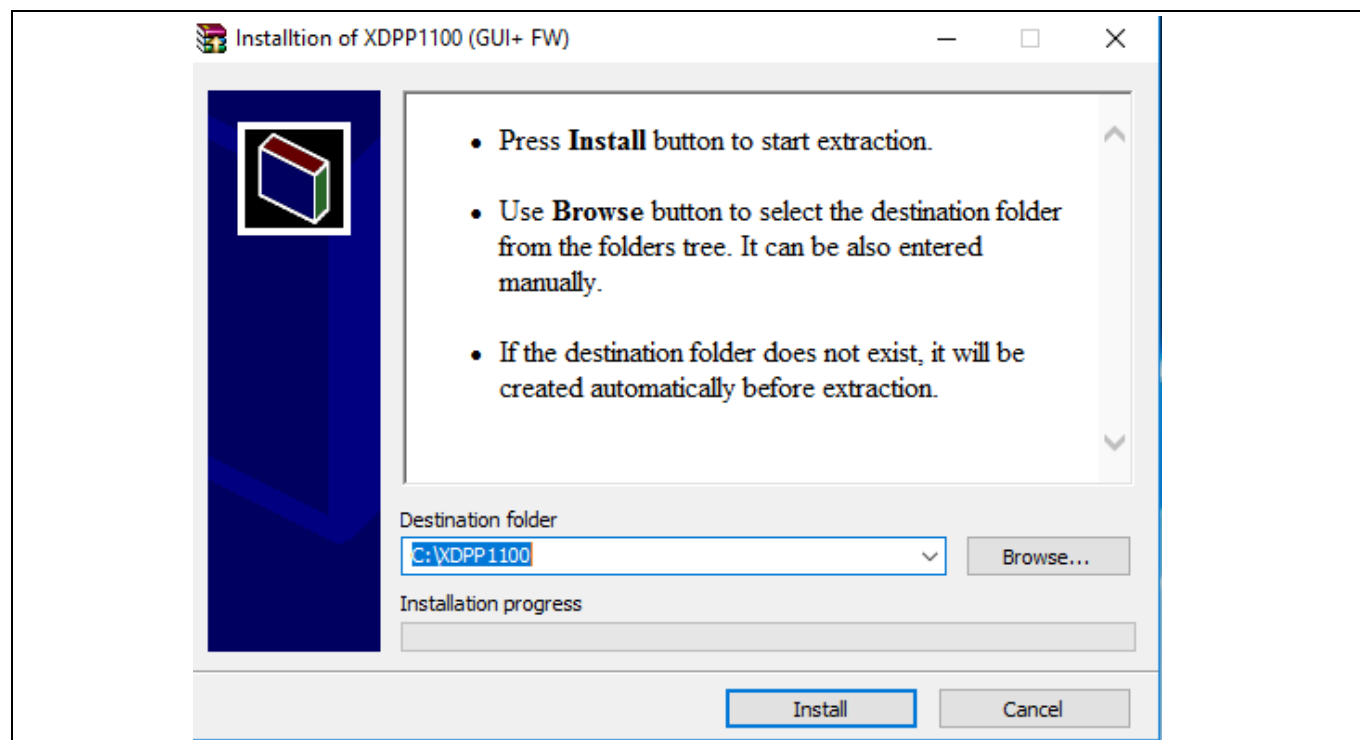
#### 1.3 Install XDPP1100 GUI

- Double-click the file **XDPP1100InstallationPackage.exe**.
- Click **Install** when prompted to do so. This will extract the GUI files to **C:\XDPP1100**

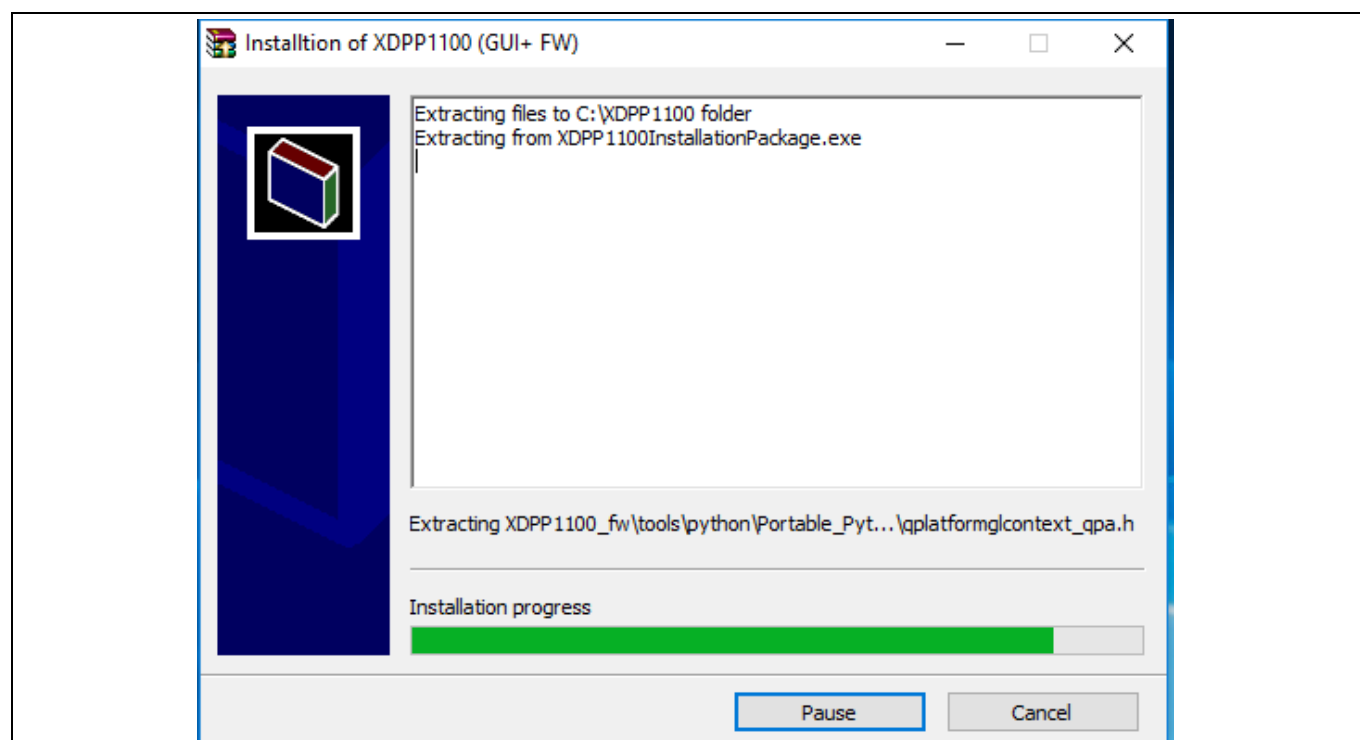


**Figure 1** GUI installation step 1

## XDPP1100 GUI installation



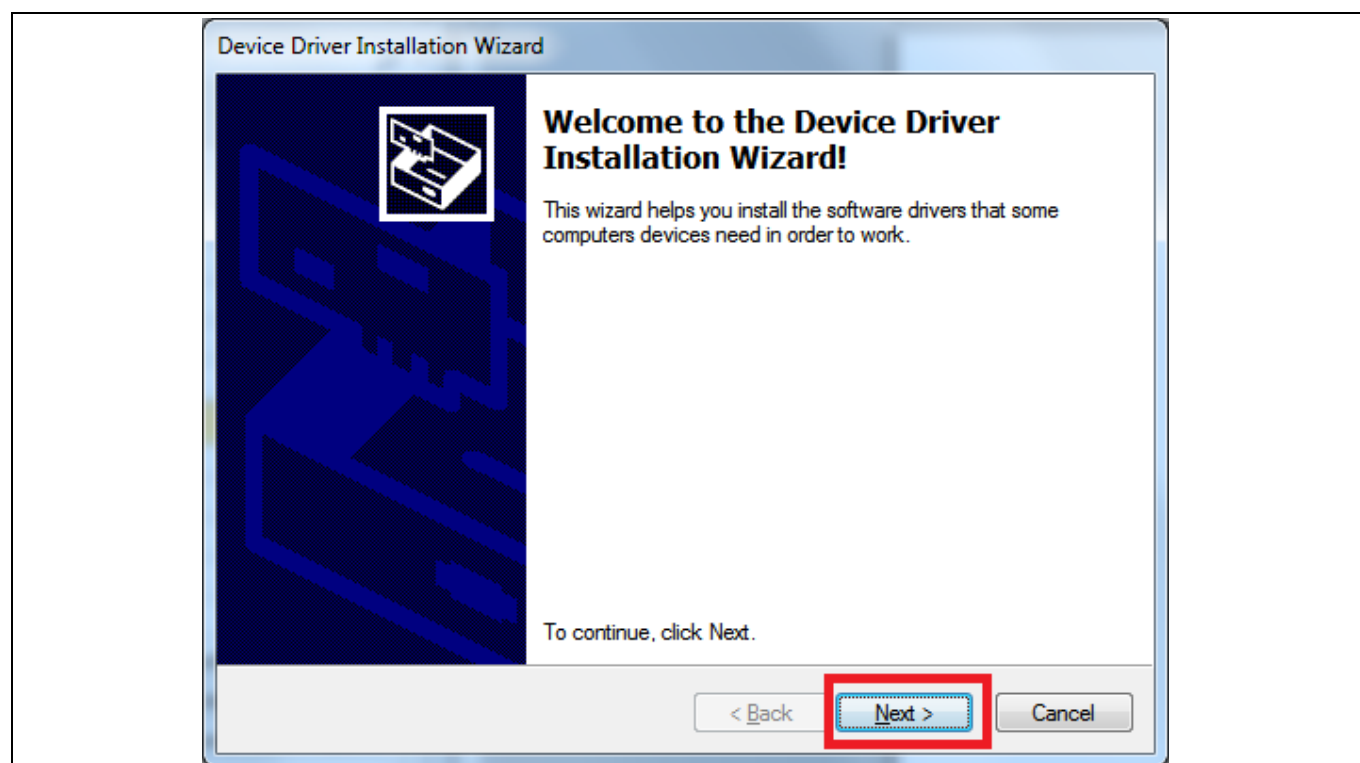
**Figure 2** GUI installation step 2



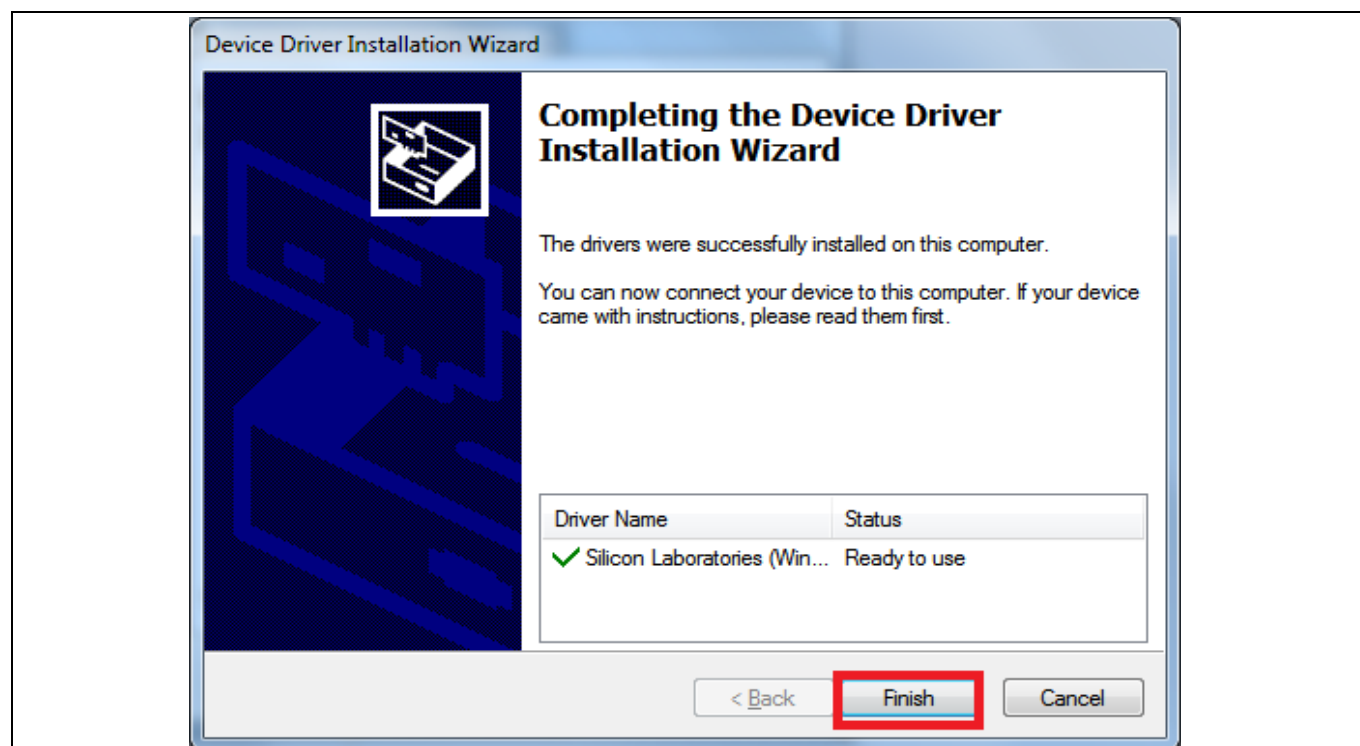
**Figure 3** GUI installation step 3

**The Installation File** will launch the **USBXpress Driver v4.0 Install**. Click **Next**. Installation of the drivers might need admin rights.

## XDPP1100 GUI installation

**Figure 4** GUI installation step 4

Once the driver has finished installing, click **Finish**

**Figure 5** Device driver installation

---

## XDPP1100 GUI installation

### 1.4 Uninstall XDPP1100 GUI

Please note the XDPP1100 GUI is not deployed through setup.exe. Therefore, there is no need to add/remove the XDPP1100 GUI from **Control Panel** -> **Add Remove Program**. Just delete the **C:\XDPP1100** folder or files if the user doesn't want to keep the entire folder including XDPP1100\_fw.

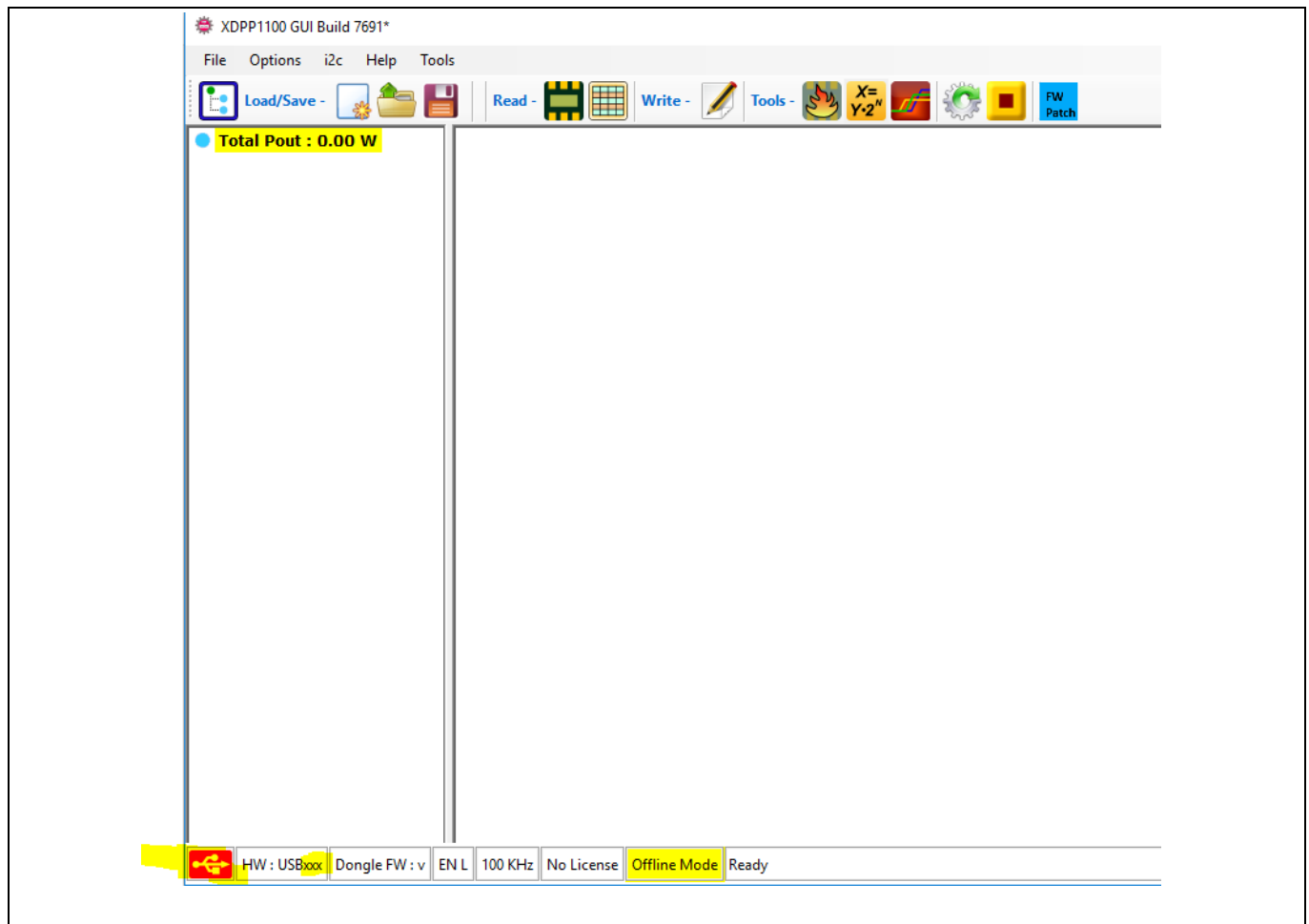
## Troubleshooting

## 2 Troubleshooting

### 2.1 Issue: USB driver is not recognized

**Attention:** Error Message: “The GUI failed to recognize the USBXpress Driver”

If the USB driver installation is not complete or the driver version is not compatible/old driver is already installed on the PC. GUI may not recognize the USB2I2C dongle.



**Figure 6** USB device driver is missing

#### Possible solution 1:

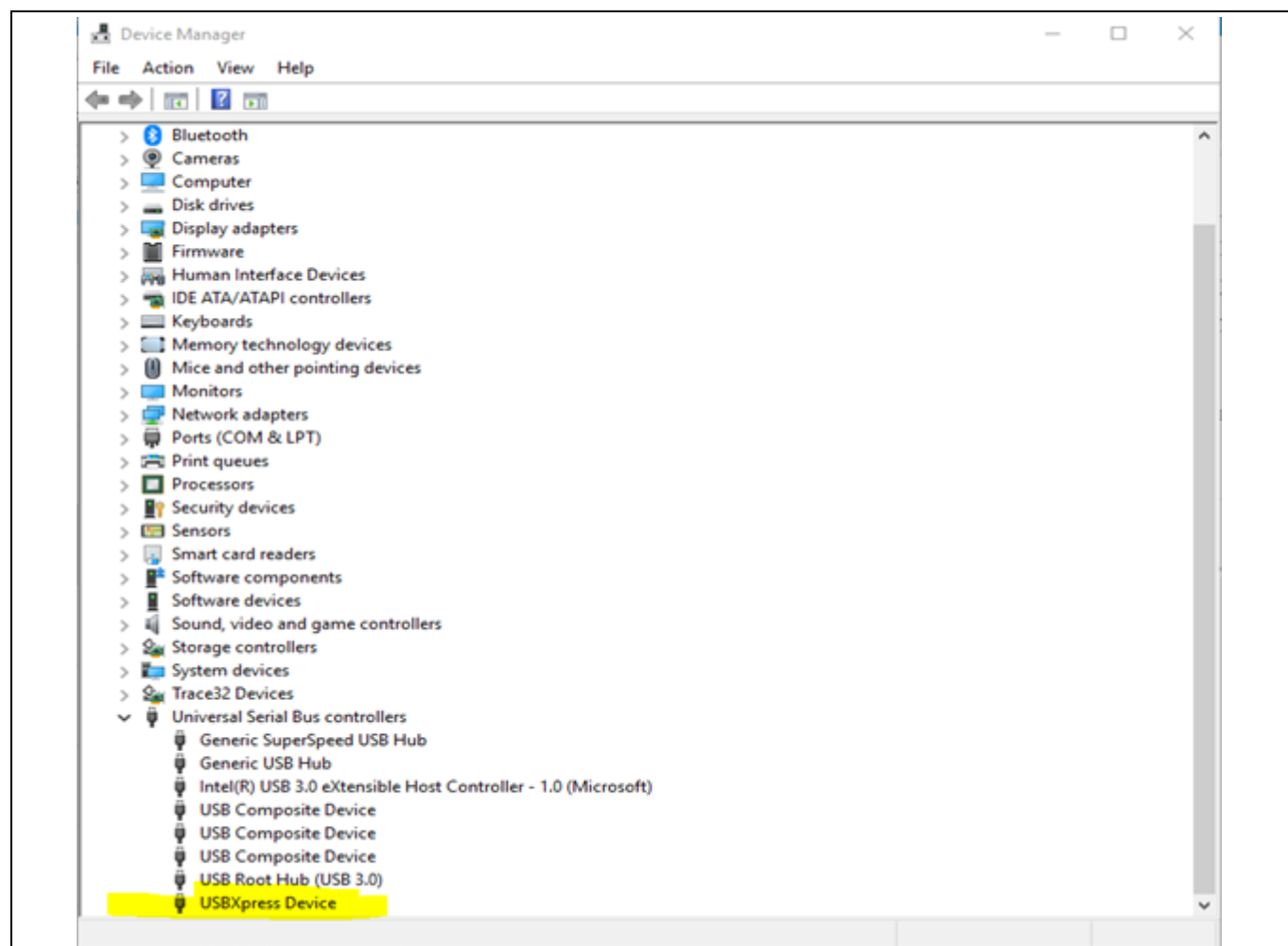
Install USBXpress Driver from the below path

1. Go to “C:\XDPP1100\SiLabsDriver”
2. run Install.exe

## Troubleshooting

### Possible solution 2:

If there is already a driver is installed, updating the driver following the below steps fixes the problem.

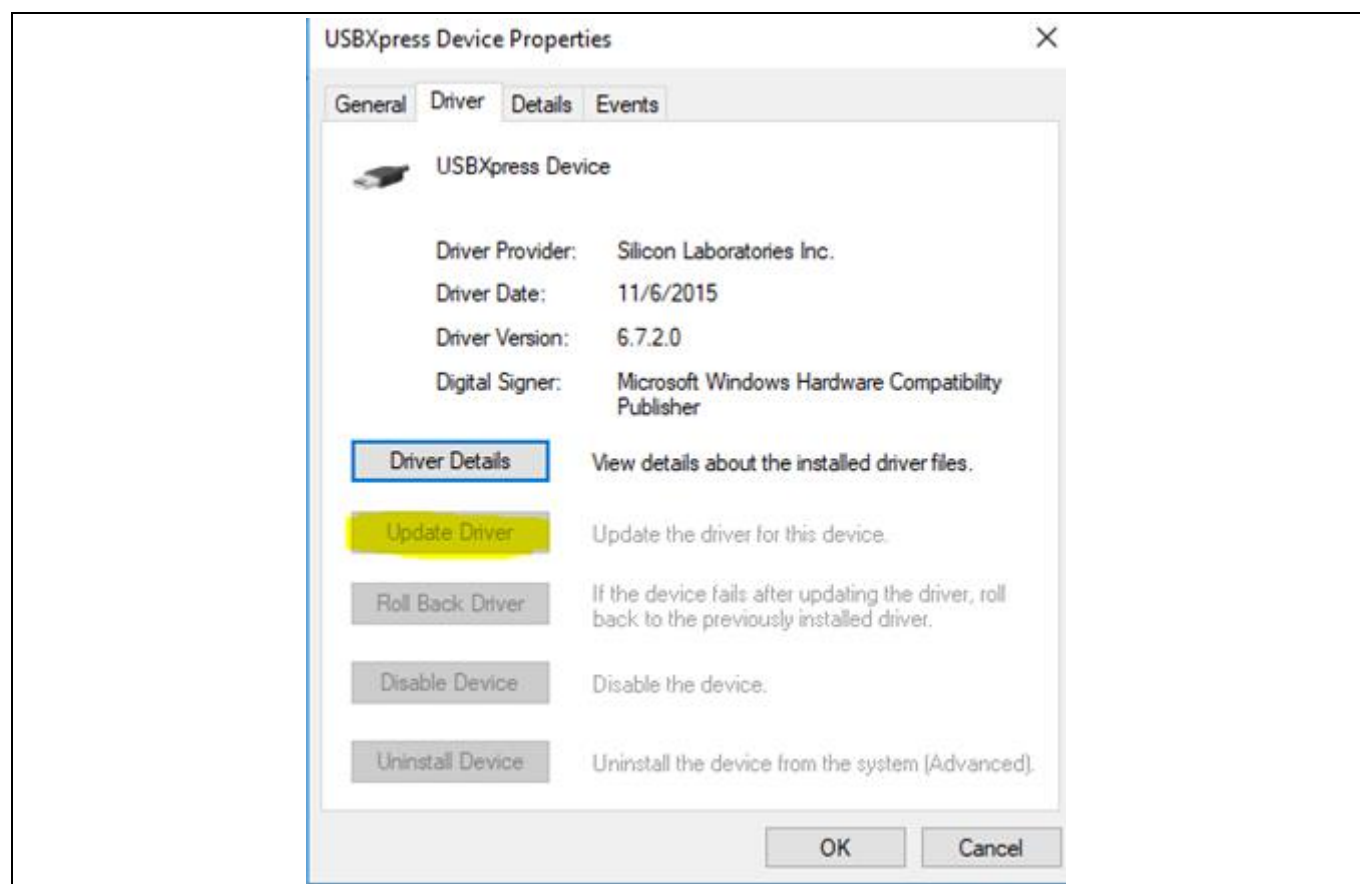


**Figure 7** USBXpress device driver is present

The above picture, confirms the driver is present and user need to update the driver, so the GUI recognizes the dongle.

- Right click on USBXpress Device
- Click on Update driver

## Troubleshooting



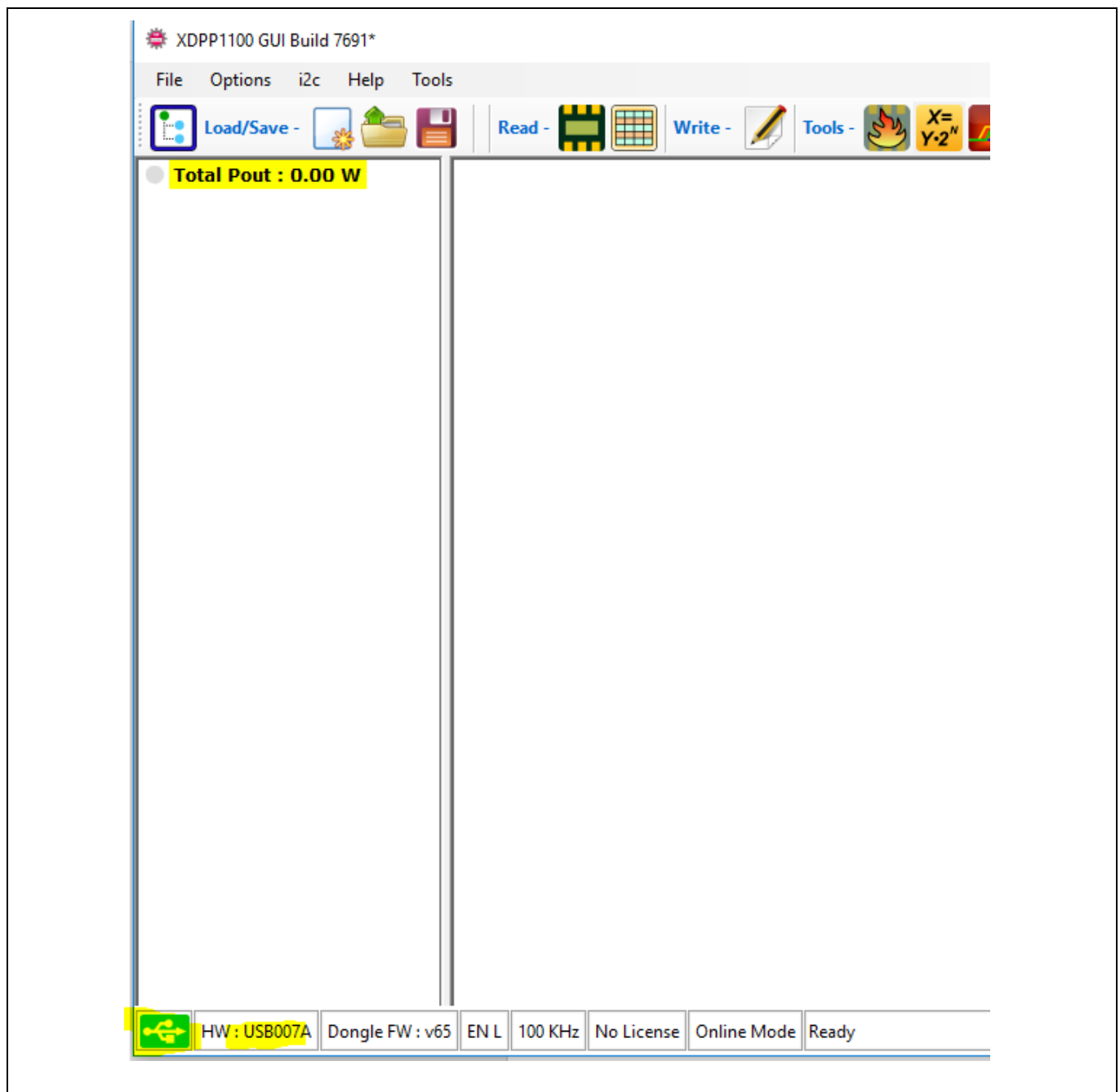
**Figure 8** Updating USBXpress device driver

- Select the folder in which the driver is available C:\XDPP1B\SiLabsDriver
- Click on update.



## Table of contents

After the successful installation of the driver, GUI recognizes the USB2I2C dongle and displays like below:



**Figure 9** USBpress device driver is recognized

---

## Revision history

### Revision history

Document version	Date of release	Description of changes
V 1.0	05-02-2021	First release

#### Trademarks

All referenced product or service names and trademarks are the property of their respective owners.

**Edition 2021-02-05**

**Published by**

**Infineon Technologies AG**

**81726 Munich, Germany**

**© 2021 Infineon Technologies AG.**

**All Rights Reserved.**

**Do you have a question about this document?**

**Email:** [erratum@infineon.com](mailto:erratum@infineon.com)

**Document reference**

**AN\_2101\_PL88\_2102\_201330**

#### IMPORTANT NOTICE

The information contained in this application note is given as a hint for the implementation of the product only and shall in no event be regarded as a description or warranty of a certain functionality, condition or quality of the product. Before implementation of the product, the recipient of this application note must verify any function and other technical information given herein in the real application. Infineon Technologies hereby disclaims any and all warranties and liabilities of any kind (including without limitation warranties of non-infringement of intellectual property rights of any third party) with respect to any and all information given in this application note.

The data contained in this document is exclusively intended for technically trained staff. It is the responsibility of customer's technical departments to evaluate the suitability of the product for the intended application and the completeness of the product information given in this document with respect to such application.

For further information on the product, technology, delivery terms and conditions and prices please contact your nearest Infineon Technologies office ([www.infineon.com](http://www.infineon.com)).

#### WARNINGS

Due to technical requirements products may contain dangerous substances. For information on the types in question please contact your nearest Infineon Technologies office.

Except as otherwise explicitly approved by Infineon Technologies in a written document signed by authorized representatives of Infineon Technologies, Infineon Technologies' products may not be used in any applications where a failure of the product or any consequences of the use thereof can reasonably be expected to result in personal injury.