



XDPP1100 GUI installation guide

About this document

Scope and purpose

The purpose of this document is to provide the necessary system requirements, installation, and uninstallation procedures to test the XDPP1100 controller.

Intended audience

This document is intended for application, firmware, and software engineers as well as others who are interested in the installation of the XDPP1100 GUI to program and test the XDPP1100 controller.

Table of contents

Table of contents.....	1
1 XDPP1100 GUI installation	2
1.1 System requirements.....	2
1.2 Download XDPP1100 GUI.....	2
1.3 Installing the XDPP1100 GUI	3
2 Troubleshooting	6
2.1 Issue: USB driver is not recognized	6
Revision history.....	10

XDPP1100 GUI installation guide

XDPP1100 GUI installation

1 XDPP1100 GUI installation

1.1 System requirements

- Ensure that you are connected to the internet.
- *Microsoft .NET Framework 4.0* must be installed. This can be downloaded [here](http://www.microsoft.com/en-us/download/details.aspx?id=17718) (if the link does not work, paste “<http://www.microsoft.com/en-us/download/details.aspx?id=17718>” without the quotes into your internet browser).
- You can check which version of .NET you have by following the instructions [here](http://support.microsoft.com/kb/318785) (if the link does not work, paste “<http://support.microsoft.com/kb/318785>” without the quotes into your internet browser).

Note: If you are using Windows 7 or 8, you may be prompted with a security warning whenever you run a program. For this setup, allow these programs to run.

1.2 Download XDPP1100 GUI

- XDPP1100 GUI is available for download through Infineon developer center launcher (DCL).
- Install the Infineon developer center (DCL) using the link -

<https://softwaretools.infineon.com/welcome>

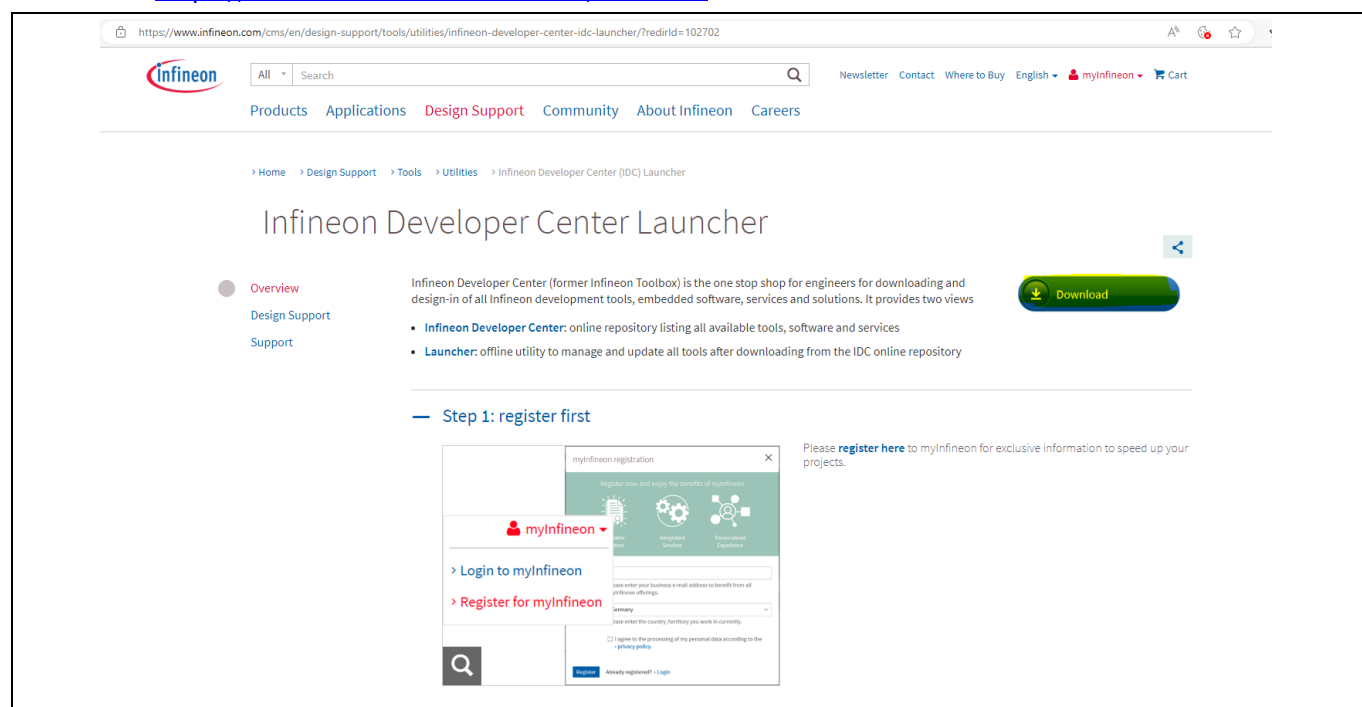


Figure 1 XDPP1100 GUI Download step 1

- After installing Infineon developer center launcher (DCL).
 - Launch DCL
 - Go to manage tools
 - search for XDPP1100

XDPP1100 GUI installation guide

XDPP1100 GUI installation

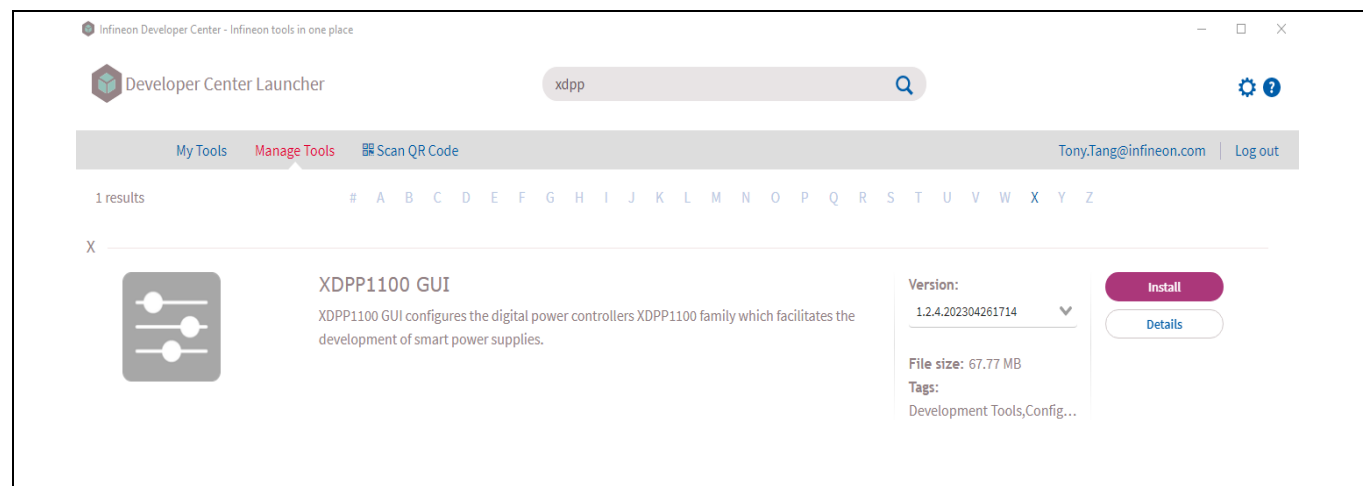


Figure 2 XDPP1100 GUI Download step 2

- The user has an option to install for the first time and launch the GUI with the start button later.
- If the user does not have permission to access the Infineon developer center, reach out to the contact mentioned below to get access: Farshad.Zarghami@infineon.com

1.3 Installing the XDPP1100 GUI

- Click on the install button.

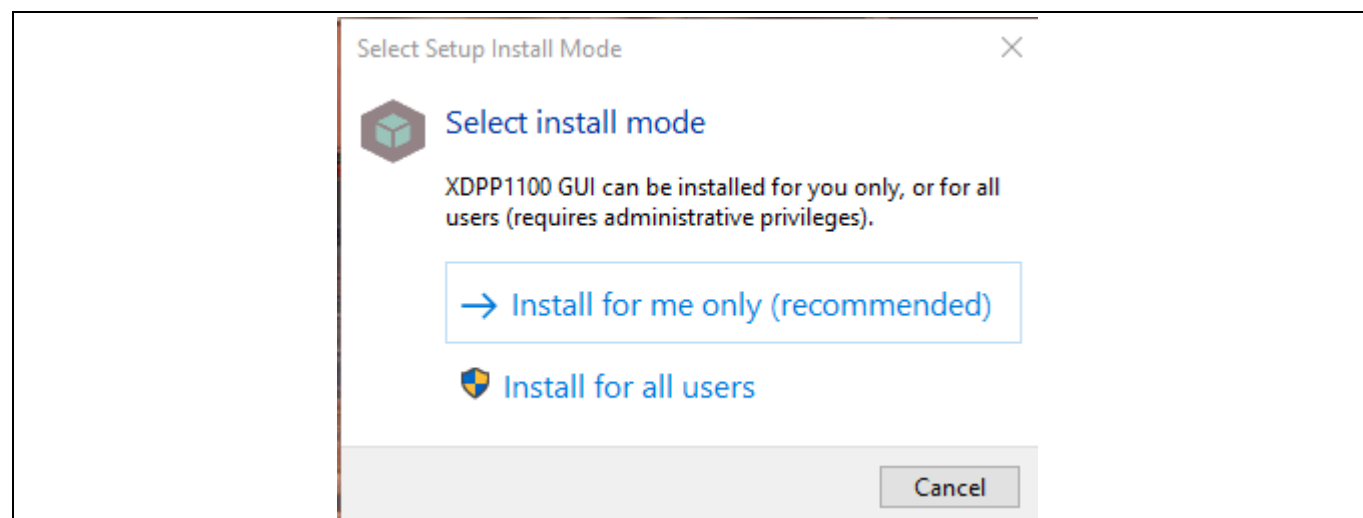


Figure 3 GUI installation step 1

- Software license agreement is available during the installation of the GUI.

XDPP1100 GUI installation guide

XDPP1100 GUI installation

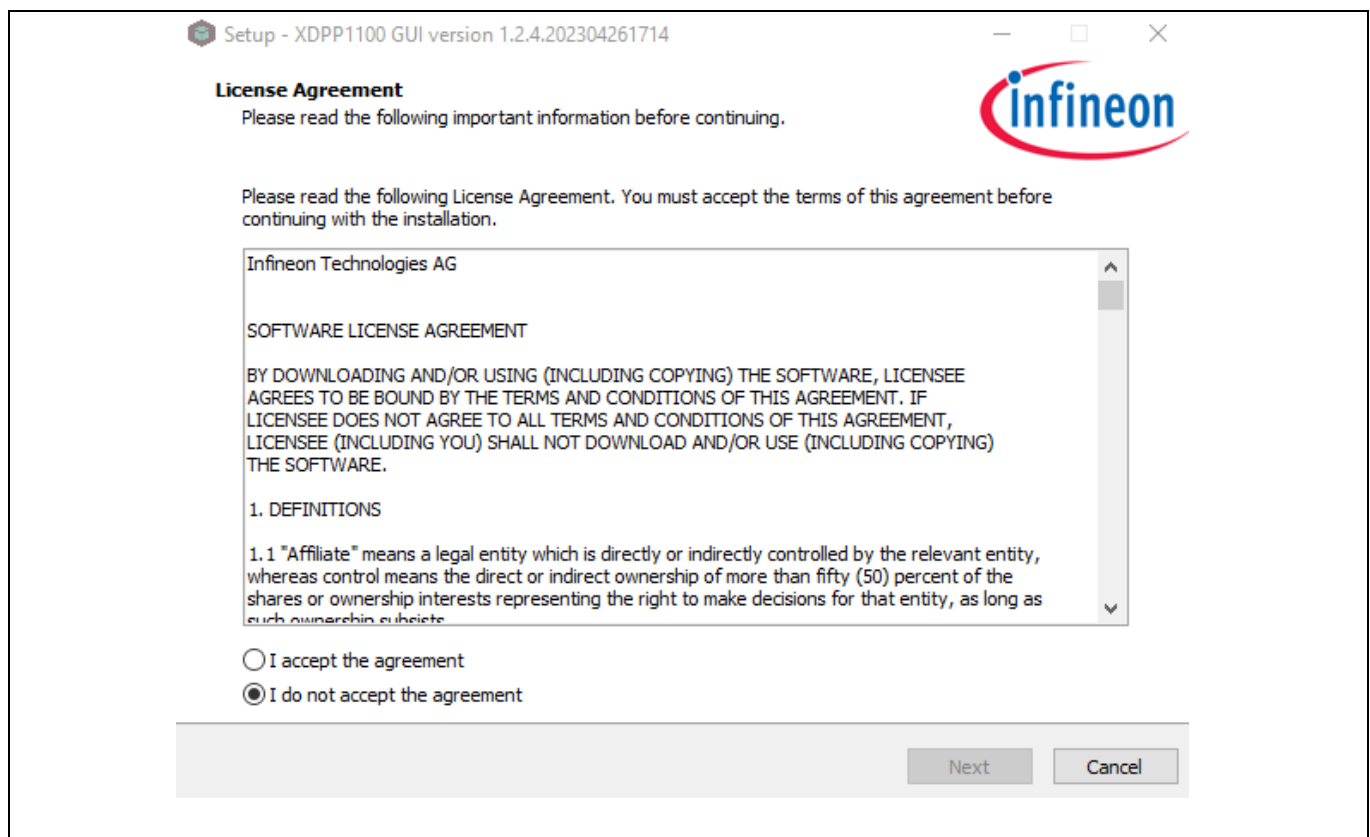


Figure 4 GUI installation step 2

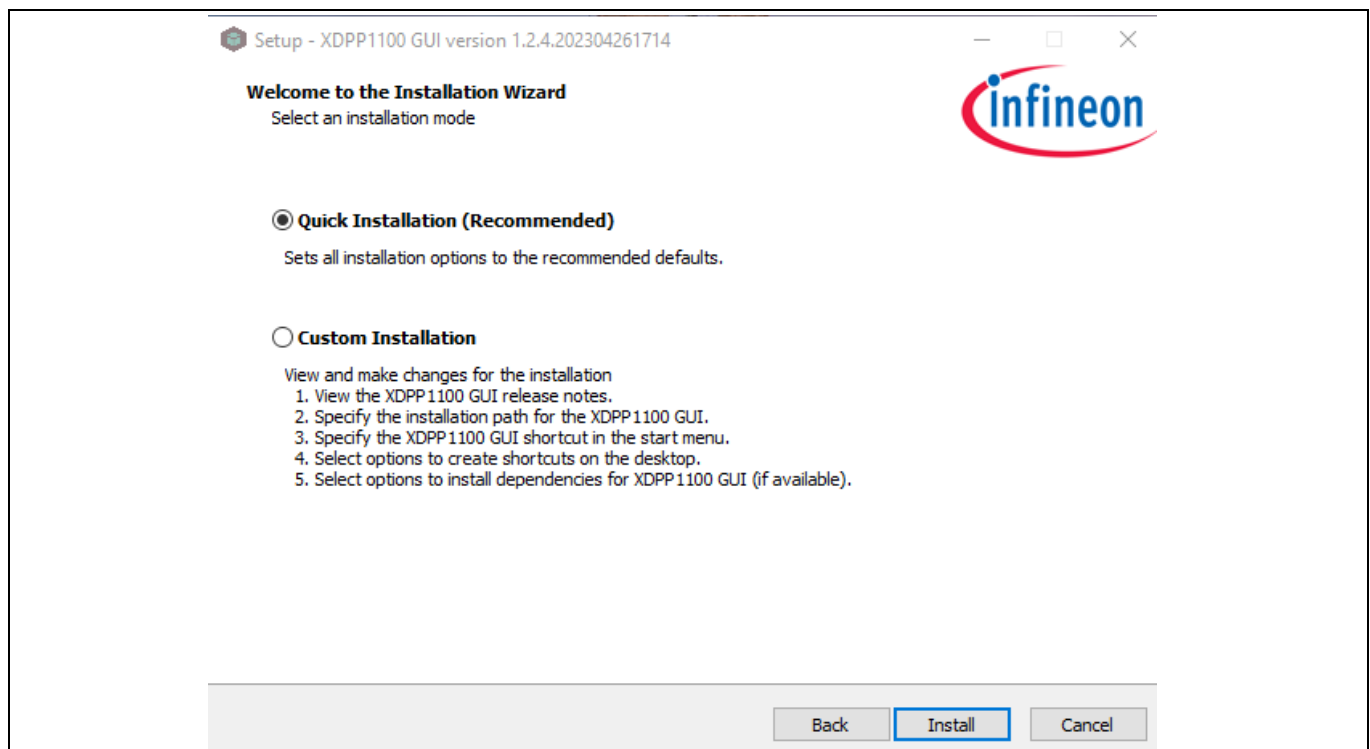


Figure 5 GUI installation step 3

XDPP1100 GUI installation guide

XDPP1100 GUI installation

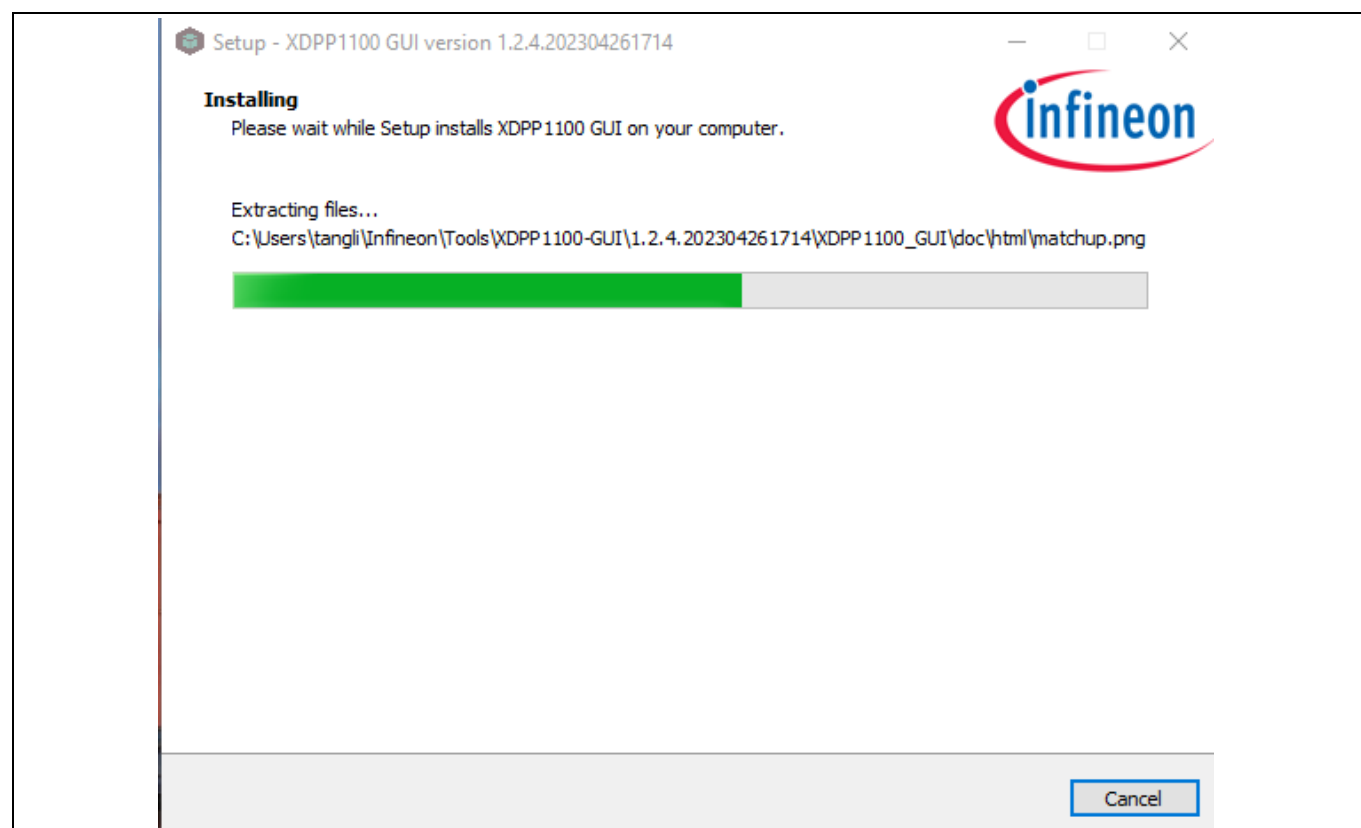


Figure 6 GUI installation step 4

Once the installation is finished, click **Finish**.

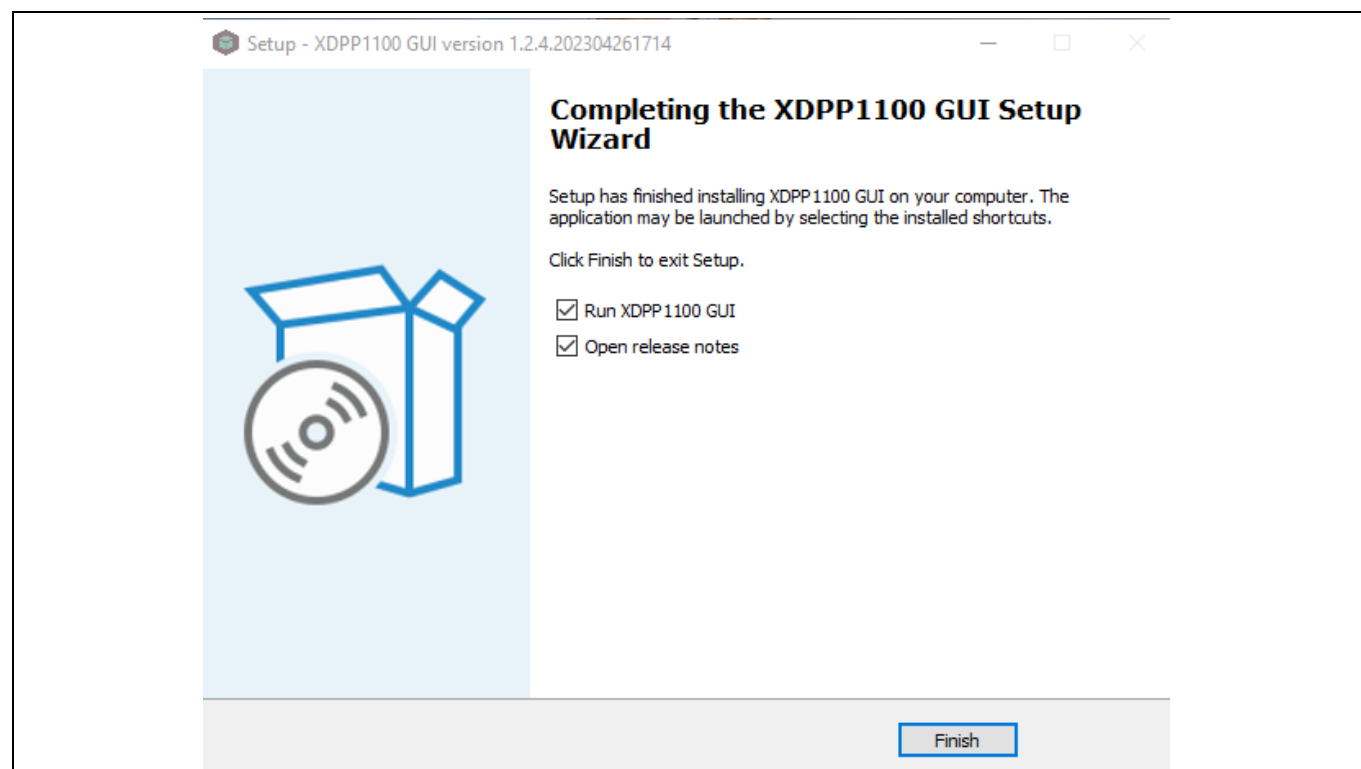


Figure 7 GUI installation step 5

XDPP1100 GUI installation guide

Troubleshooting

2 Troubleshooting

2.1 Issue: USB driver is not recognized

Attention: Error Message: “The GUI failed to recognize the USBXpress Driver”

If the USB driver installation is incomplete, the driver version is incompatible, or an old driver is installed on the PC, the GUI may not recognize the USB2I2C dongle.

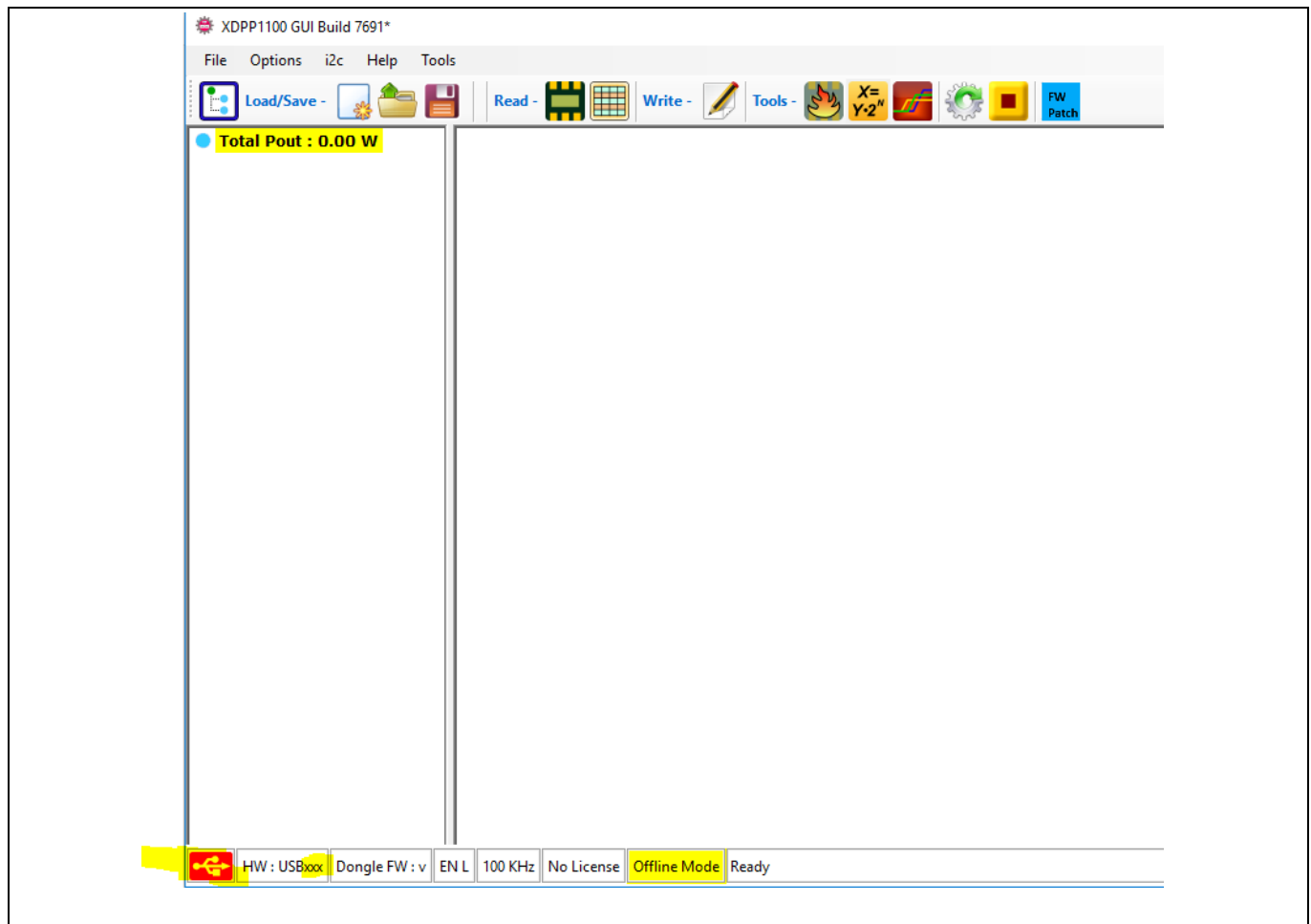


Figure 8 USB device driver is missing

Possible solution 1:

Install USBXpress Driver from the below path

1. Go to “C:\XDPP1100\SiLabsDriver”
2. Run “Install.exe”

XDPP1100 GUI installation guide

Troubleshooting

Possible solution 2:

If a driver is already installed, updating the driver following the steps below fixes the problem.

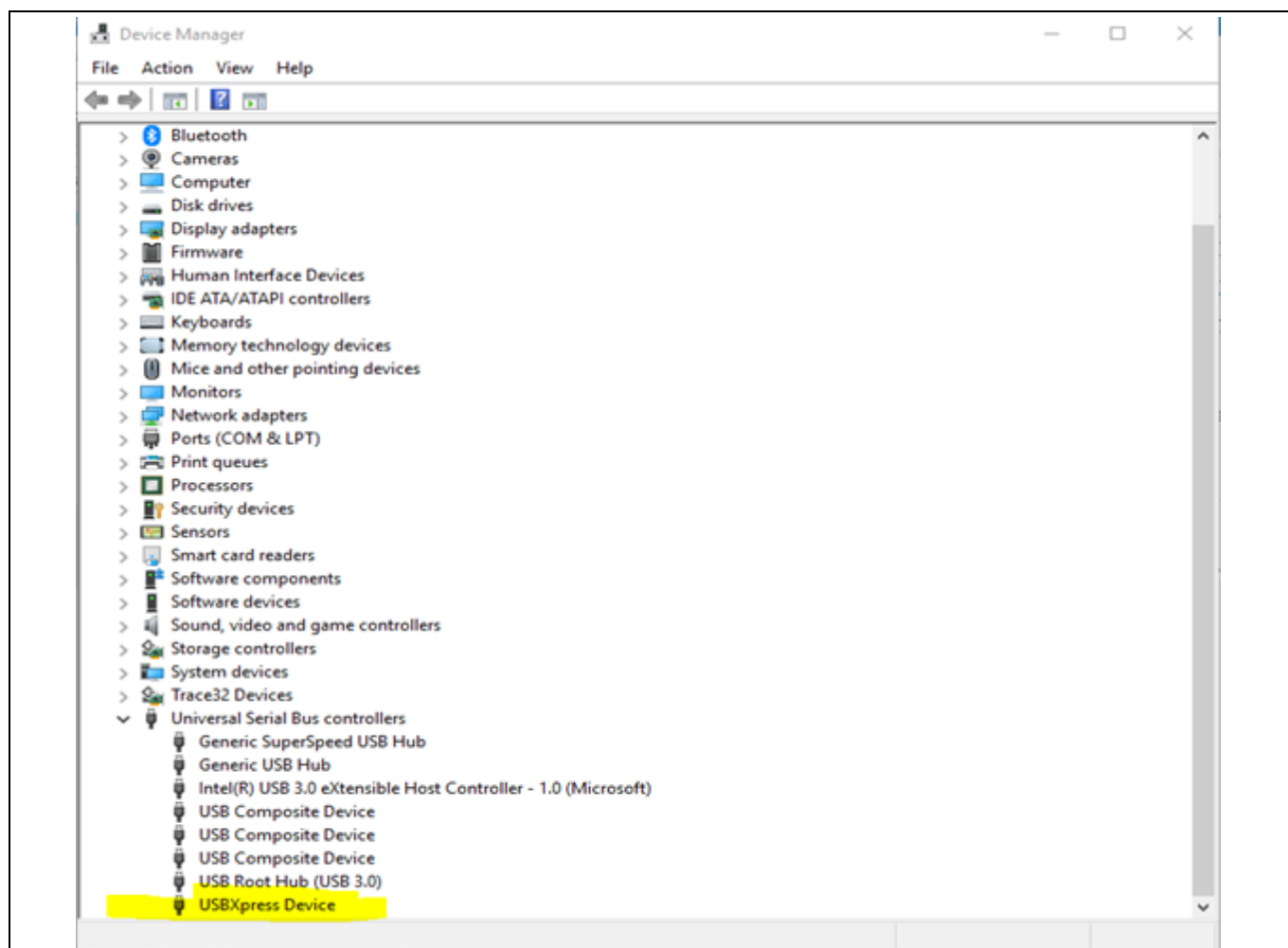


Figure 9 USBXpress device driver is present

The above picture confirms that the driver is present, and the user needs to update the driver so that the GUI recognizes the dongle.

- Right click on "USBXpress Device"
- Click on "Update driver"

XDPP1100 GUI installation guide

Troubleshooting

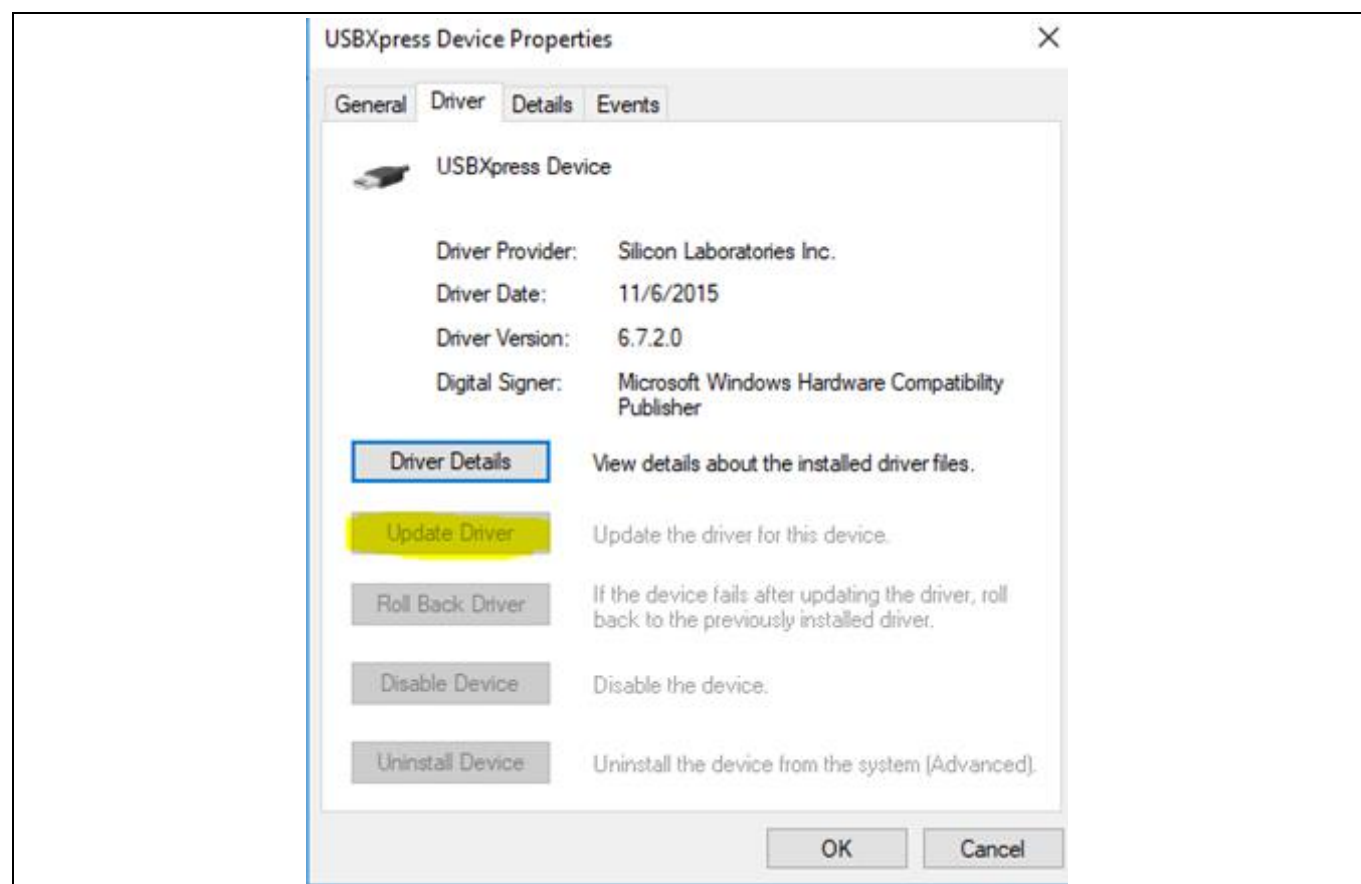


Figure 10 Updating USBXpress device driver

- Select the folder in which the driver is available C:\XDPP1B\SiLabsDriver
- Click on update.

XDPP1100 GUI installation guide

Troubleshooting

After the successful installation of the driver, the GUI recognizes the USB2I2C dongle and displays as follows:

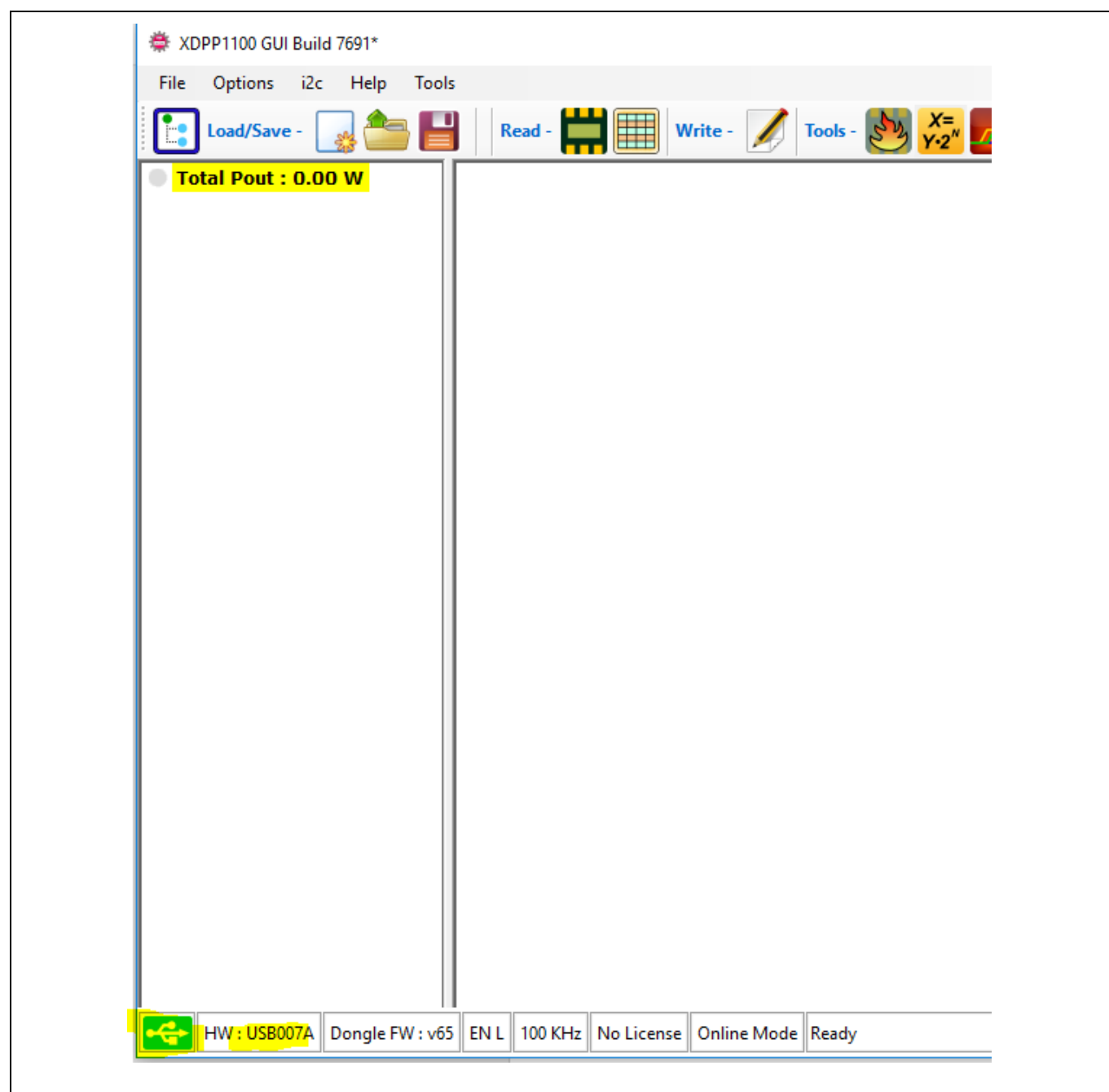


Figure 11 USBpress device driver is recognized

XDPP1100 GUI installation guide

Revision history

Revision history

Document version	Date of release	Description of changes
V 1.0	05-02-2021	First release
V 1.1	2022-08-31	Added section 1.3 Contact information in section 1.2 adapted
V 1.2	2023-09-14	Updated the download and installation steps from Developer center launcher

Trademarks

All referenced product or service names and trademarks are the property of their respective owners.

Edition 2023-09-14

Published by

Infineon Technologies AG

81726 Munich, Germany

© 2023 Infineon Technologies AG.

All Rights Reserved.

Do you have a question about this document?

Email: erratum@infineon.com

Document reference

AN_2101_PL88_2102_201330

IMPORTANT NOTICE

The information contained in this application note is given as a hint for the implementation of the product only and shall in no event be regarded as a description or warranty of a certain functionality, condition or quality of the product. Before implementation of the product, the recipient of this application note must verify any function and other technical information given herein in the real application. Infineon Technologies hereby disclaims any and all warranties and liabilities of any kind (including without limitation warranties of non-infringement of intellectual property rights of any third party) with respect to any and all information given in this application note.

The data contained in this document is exclusively intended for technically trained staff. It is the responsibility of customer's technical departments to evaluate the suitability of the product for the intended application and the completeness of the product information given in this document with respect to such application.

For further information on the product, technology, delivery terms and conditions and prices please contact your nearest Infineon Technologies office (www.infineon.com).

WARNINGS

Due to technical requirements products may contain dangerous substances. For information on the types in question please contact your nearest Infineon Technologies office.

Except as otherwise explicitly approved by Infineon Technologies in a written document signed by authorized representatives of Infineon Technologies, Infineon Technologies' products may not be used in any applications where a failure of the product or any consequences of the use thereof can reasonably be expected to result in personal injury.