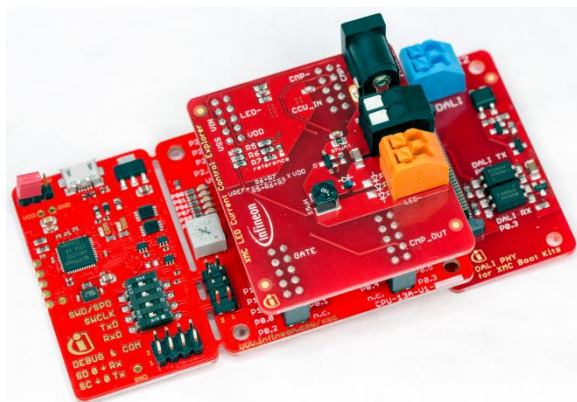
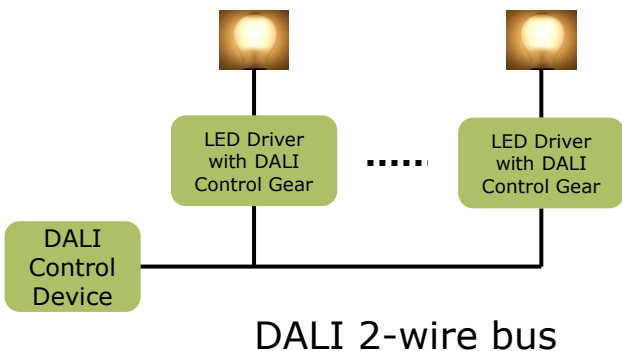


DALI 2 SW stack for XMC1200 and XMC1400



LED explorer kit

- › **DALI (Digital Addressable Lighting Interface) is a broadly used interface standard for lighting controls with the aim of promoting interoperability, and can be extended for home automation**
 - The revised DALI 2 Standard (IEC 62386-Part 101/102 -edition 2.0 2014-11) improves the predictability in the control gear's behavior
- › **Xenerqi and IFX developed a DALI 2 slave SW stack for the XMC1000 approved on LED drivers from Xenerqi**
- › **DALI 2 software stack is will be available for free download after registration; link:**
 - https://infineoncommunity.com/2018Mar_GLOB_GATED_DALI_Software_ID941.
- › **The downloaded zip file contains wo SW projects that can be imported into DAVE v4**
 - Running out of the box on the LED explorer kit
 - Extensible and re-configuration via DAVE™ APPs
 - Complete documentation in the Doc folder
- › **In addition XMC1200 & 1400 have following benefits for LED lamp applications**
 - XMC™ can also be used for the power supply to reduce system costs
 - Flicker free dimming with Brightness and Color Control Unit (BCCU)