

Efficient tools, software and services from evaluation until production – XMC™ ecosystem and enablement

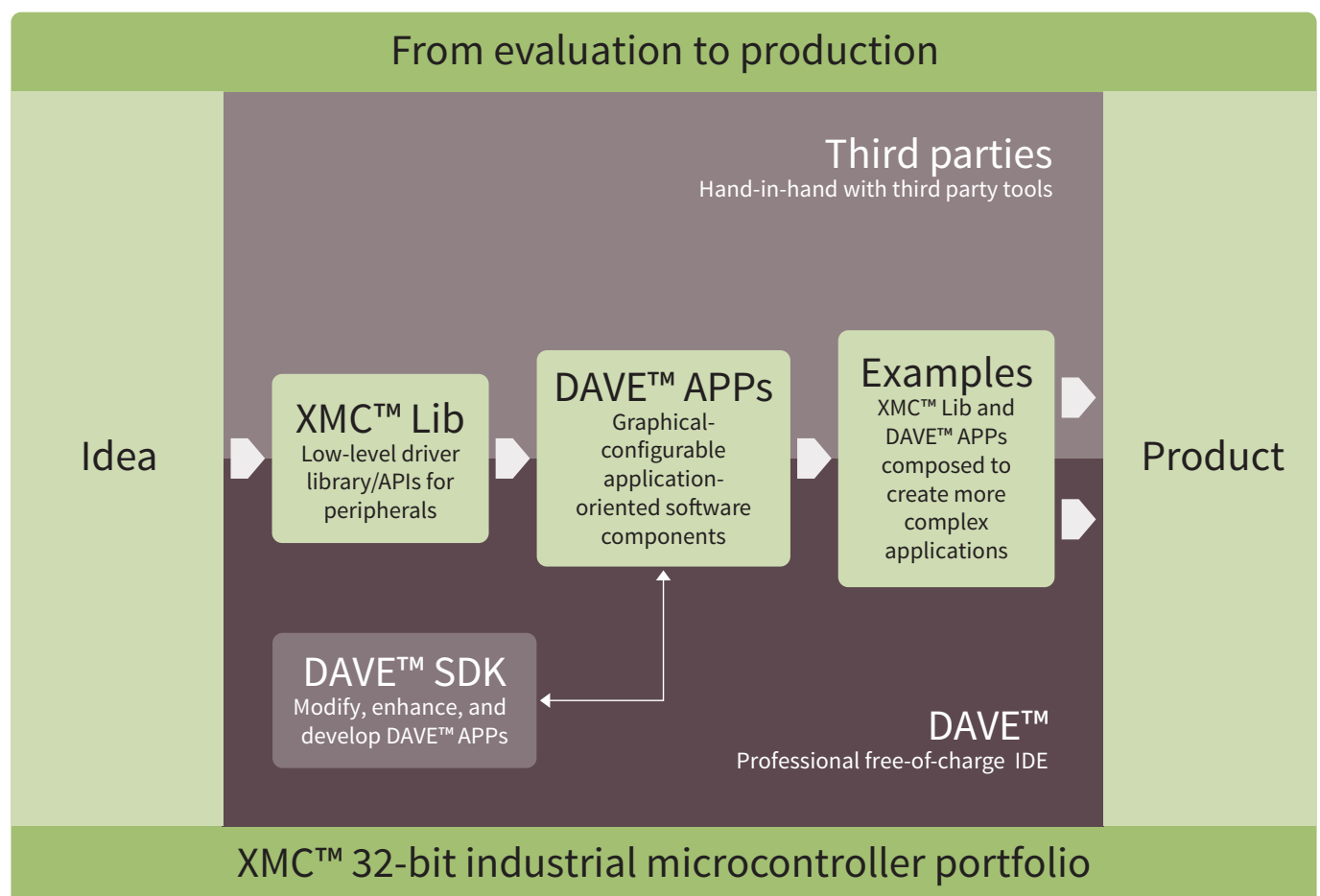


A comprehensive set of development tools, ready-to-use software solutions and support services are available for the XMC™ microcontrollers portfolio. These tools and software products support the complete development cycle to ensure an efficient and fast design process. www.infineon.com/xmc-ecosystem

DAVE™

Free-of-charge IDE using GNU C-compiler, providing graphical system design methods, a wide and configurable code repository and automatic code generator for users of the ARM® Cortex®-M XMC™ industrial microcontroller along the entire process – from Evaluation-to-Production (E2P).

XMC™ Lib and DAVE™ generated code can be used with other third-party tool chains. www.infineon.com/dave

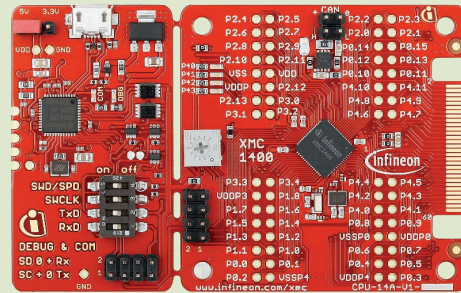


Kits and evaluation boards

XMC1400 boot kit series

Order No.: KIT_XMC14_BOOT_001

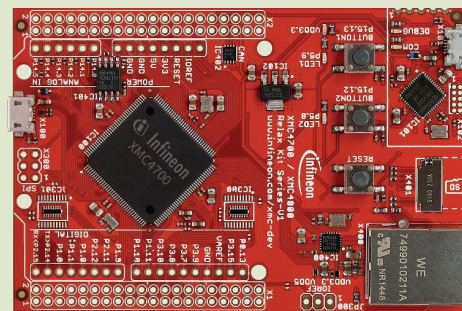
- › XMC1400 MCU series, ARM® Cortex®-M0
- › On-board CAN node
- › Hardware compatible with XMC™ LED lighting cards and motor control board



XMC4700 relax kit series

Order No.: KIT_XMC47_RELAX_V1

- › XMC4700 MCU series, ARM® Cortex®-M4
- › XMC4700 relax kit with Ethernet TCP/IP, CAN node, SD/MMC card slot, quad SPI flash, RTC
- › Hardware compatible with Arduino



XMC 2Go

KIT_XMC_2GO_XMC1100_V1

- › XMC1100 (ARM® Cortex™-M0 based)
- › On-board J-link lite debugger (Realized with XMC4200 ,microcontroller)
- › Power over USB (Micro USB)
- › ESD and reverse current protection
- › 2x user LED pin header 2x 8-pins suitable for breadboard



XMC4800 relax EtherCAT® kit

Order No.: KIT_XMC48_RELAX_EC_V1

- › XMC4800 MCU series, ARM® Cortex®-M4
- › EtherCAT® slave controller on-chip
- › On-board Ethernet TCP/IP, CAN node, SD/MMC card slot, quad SPI flash, RTC
- › Physical layer for the EtherCAT® communication realized via the XMC™ EtherCAT® PHY board add-on

