



**Please note that Cypress is an Infineon Technologies Company.**

The document following this cover page is marked as “Cypress” document as this is the company that originally developed the product. Please note that Infineon will continue to offer the product to new and existing customers as part of the Infineon product portfolio.

**Continuity of document content**

The fact that Infineon offers the following product as part of the Infineon product portfolio does not lead to any changes to this document. Future revisions will occur when appropriate, and any changes will be set out on the document history page.

**Continuity of ordering part numbers**

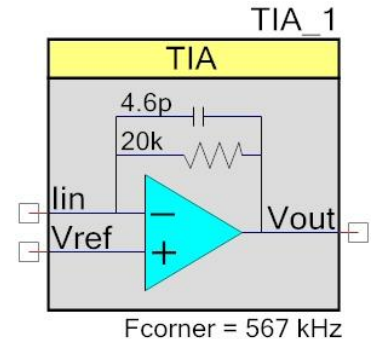
Infineon continues to support existing part numbers. Please continue to use the ordering part numbers listed in the datasheet for ordering.

# Trans-Impedance Amplifier (TIA)

2.0

## Features

- Selectable conversion gain
- Selectable corner frequency
- Compensation for capacitive input sources
- Adjustable power settings
- Selectable input reference voltage



## General Description

The Trans-Impedance Amplifier (TIA) component provides an opamp-based current-to-voltage conversion amplifier with resistive gain and user-selected bandwidth. It is derived from the SC/CT block.

The TIA is used to convert an external current to a voltage. Typical applications include the measurement of sensors with current outputs such as photodiodes. The conversion gain of the TIA is expressed in ohms, with the available range between 20 kΩ and 1.0 MΩ. Current output sensors, such as photodiodes, often have substantial output capacitance. This requires shunt feedback capacitance in the TIA to guarantee stability. The TIA has a programmable feedback capacitor to meet this need and provide bandwidth limiting to reduce broadband noise.

## Input/Output Connections

This section describes the various input and output connections for the TIA. An asterisk (\*) in the list of I/Os indicates that the I/O may be hidden on the symbol under the conditions listed in the description of that I/O.

### lin – Analog

The lin is the input signal terminal. It is the sum of currents from the global inputs, which may include signals from a current output DAC.

**Note** This terminal name is `Iin` (uppercase i) **not** `lin` (lowercase l).

## Vref – Analog

Vref is the input terminal for a reference signal. The reference may be an internal reference, internal VDAC value, or external signal.

## Vout – Analog

Vout is the output signal terminal. Vout is determined by the following equation, where  $R_{FB}$  is resistive feedback:

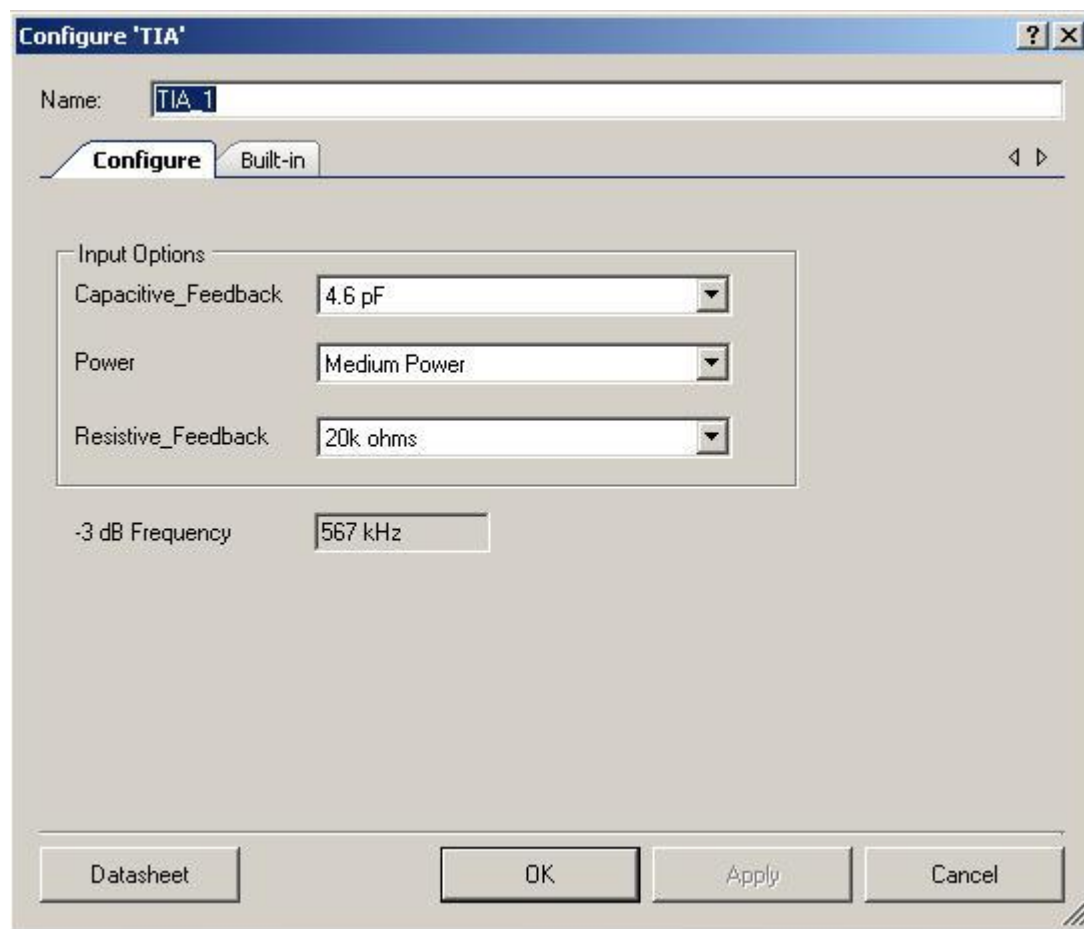
$$V_{out} = V_{ref} - I_{in} \times R_{FB}$$

Positive (from source) currents result in output voltage that is negative with respect to Vref.

Negative (into source) currents result in output voltage that is positive with respect to Vref.

## Component Parameters

Drag a TIA component onto your design and double-click it to open the **Configure** dialog.



## Capacitive\_Feedback

This sets the capacitive feedback for the TIA. The capacitive feedback can be set to **None**, **1.3 pF**, **3.3 pF**, or **4.6 pF** (default). The  $-3$  dB frequency for the TIA is calculated from the product of the values of resistive and capacitive feedback components.

## Power

This sets the initial drive power of the TIA. The power determines the speed with which the TIA reacts to changes in the input signal. There are four power settings; **Minimum Power**, **Low Power**, **Medium Power** (default) and **High Power**. The **Minimum Power** setting results in the slowest response time and **High Power** the fastest. **Minimum** and **Low Power** settings have reduced drive currents and are not suitable for the lower values of feedback resistor.

## Resistive\_Feedback

This sets the nominal resistive feedback for the TIA. The resistive feedback may be selected from the following set of allowed values (in ohms): 20k (default), 30k, 40k, 80k, 120k, 250k, 500k and 1000k.

## -3 db Frequency

This combobox is used to display the calculated value of bandwidth. This value depends on **Resistor\_Feedback**, **Capacitive\_Feedback** values and **Power** settings.

## Application Programming Interface

Application Programming Interface (API) routines allow you to configure the component using software. The following table lists and describes the interface to each function. The subsequent sections cover each function in more detail.

By default, PSoC Creator assigns the instance name “TIA\_1” to the first instance of a component in a given design. It can be renamed to any unique value that follows the syntactic rules for identifiers. The instance name becomes the prefix of every global function name, variable and constant symbol. For readability, the instance name used in the following table is “TIA.”

| Function       | Description   |
|----------------|---|
| TIA_Start()    | Powers up the TIA.                                  |
| TIA_Stop()     | Powers down the TIA.                                |
| TIA_SetPower() | Sets drive power to one of four levels.             |
| TIA_SetResFB() | Sets the resistive feedback to one of eight values. |
| TIA_SetCapFB() | Sets the capacitive feedback to one of four values. |
| TIA_Sleep()    | Stops and saves the user configurations.            |

|                     |  |
|---------------------|--|
| TIA_Wakeup()        | Restores and enables the user configurations.      |
| TIA_Init()          | Initializes or restores default TIA configuration. |
| TIA_Enable()        | Enables the TIA.                                   |
| TIA_SaveConfig()    | Empty function. Provided for future use.           |
| TIA_RestoreConfig() | Empty function. Provided for future use.           |

## Global Variables

| Variable    | Description   |
|-------------|---|
| TIA_initVar | Indicates whether the TIA has been initialized. The variable is initialized to 0 and set to 1 the first time TIA_Start() is called. This allows the component to restart without reinitialization after the first call to the TIA_Start() routine.<br><br>If reinitialization of the component is required, then the TIA_Init() function can be called before the TIA_Start() or TIA_Enable() function. |

## void TIA\_Start(void)

**Description:** Performs all of the required initialization for the component and enables power to the amplifier. The first time the routine is executed, the resistive and capacitive feedback and amplifier power are set based on the values provided during configuration. When called to restart the TIA following a TIA\_Stop() call, the current component parameter settings are retained.

**Parameters:** None

**Return Value:** None

**Side Effects:** None

## void TIA\_Stop(void)

**Description:** Powers down TIA to its lowest power state and disables output.

**Parameters:** None

**Return Value:** None

**Side Effects:** Does not affect power, resistive or capacitive feedback settings

**void TIA\_SetPower(uint8 power)**

**Description:** Sets the drive power to one of four settings; minimum, low, medium, or high.

**Parameters:** uint8 power: See the following table for valid power settings.

| Power Setting | Notes  |
|---------------|--|
| TIA_MINPOWER  | Minimum active power and slowest reaction time |
| TIA_LOWPOWER  | Low power and speed                            |
| TIA_MEDPOWER  | Medium power and speed                         |
| TIA_HIGHPOWER | Highest active power and fastest reaction time |

**Return Value:** None

**Side Effects:** None

**void TIA\_SetResFB(uint8 res\_feedback)**

**Description:** Set the amplifier resistive feedback value.

**Parameters:** uint8 res\_feedback: See the following table for valid resistive feedback settings.

| Gain Setting           | Notes                     |
|------------------------|---------------------------|
| TIA_RES_FEEDBACK_20K   | Feedback resistor = 20k   |
| TIA_RES_FEEDBACK_30K   | Feedback resistor = 30k   |
| TIA_RES_FEEDBACK_40K   | Feedback resistor = 40k   |
| TIA_RES_FEEDBACK_80K   | Feedback resistor = 80k   |
| TIA_RES_FEEDBACK_120K  | Feedback resistor = 120k  |
| TIA_RES_FEEDBACK_250K  | Feedback resistor = 250k  |
| TIA_RES_FEEDBACK_500K  | Feedback resistor = 500k  |
| TIA_RES_FEEDBACK_1000K | Feedback resistor = 1000k |

**Return Value:** None

**Side Effects:** None

**void TIA\_SetCapFB(uint8 cap\_feedback)**

**Description:** Set the amplifier capacitive feedback value.

**Parameters:** uint8 cap\_feedback: See the following table for valid capacitive feedback settings.

| Gain Setting           | Notes                       |
|------------------------|-----------------------------|
| TIA_CAP_FEEDBACK_NONE  | No capacitive feedback      |
| TIA_CAP_FEEDBACK_1_3PF | Feedback capacitor = 1.3 pF |
| TIA_CAP_FEEDBACK_3_3PF | Feedback capacitor = 3.3 pF |
| TIA_CAP_FEEDBACK_4_6PF | Feedback capacitor = 4.6 pF |

**Return Value:** None

**Side Effects:** None

**void TIA\_Sleep(void)**

**Description:** This is the preferred API to prepare the component for sleep. The TIA\_Sleep() function saves the current component state. Then it calls the TIA\_Stop() function and calls TIA\_SaveConfig() to save the hardware configuration.

Call the TIA\_Sleep() function before calling the CyPmSleep() or the CyPmHibernate() function. Refer to the PSoC Creator *System Reference Guide* for more information about power management functions.

**Parameters:** None

**Return Value:** None

**Side Effects:** None

**void TIA\_Wakeup(void)**

**Description:** This is the preferred routine to restore the component to the state when TIA\_Sleep() was called. The TIA\_Wakeup() function calls the TIA\_RestoreConfig() function to restore the configuration. If the component was enabled before the TIA\_Sleep() function was called, the TIA\_Wakeup() function will also re-enable the component.

**Parameters:** None

**Return Value:** None

**Side Effects:** Calling the TIA\_Wakeup() function without first calling the TIA\_Sleep() or TIA\_SaveConfig() function may produce unexpected behavior.

## void TIA\_Init(void)

**Description:** Initializes or restores the component according to the customizer Configure dialog settings. It is not necessary to call TIA\_Init() because the TIA\_Start() routine calls this function and is the preferred method to begin component operation.

**Parameters:** None

**Return Value:** None

**Side Effects:** All registers will be set to values according to the customizer Configure dialog.

## void TIA\_Enable(void)

**Description:** Activates the hardware and begins component operation. It is not necessary to call TIA\_Enable() because the TIA\_Start() routine calls this function, which is the preferred method to begin component operation.

**Parameters:** None

**Return Value:** None

**Side Effects:** None

## void TIA\_SaveConfig(void)

**Description:** Empty function. Provided for future use.

**Parameters:** None

**Return Value:** None

**Side Effects:** None

## void TIA\_RestoreConfig(void)

**Description:** Empty function. Provided for future use.

**Parameters:** None

**Return Value:** None

**Side Effects:** None

## MISRA Compliance

This section describes the MISRA-C:2004 compliance and deviations for the component. There are two types of deviations defined:

- project deviations – deviations that are applicable for all PSoC Creator components





- specific deviations – deviations that are applicable only for this component

This section provides information on component-specific deviations. Project deviations are described in the MISRA Compliance section of the *System Reference Guide* along with information on the MISRA compliance verification environment.

The TIA component does not have any specific deviations.

This component has no embedded components.

## Sample Firmware Source Code

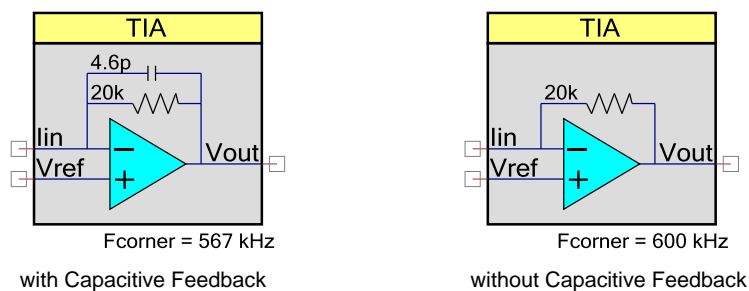
PSoC Creator provides many example projects that include schematics and example code in the Find Example Project dialog. For component-specific examples, open the dialog from the Component Catalog or an instance of the component in a schematic. For general examples, open the dialog from the Start Page or **File** menu. As needed, use the **Filter Options** in the dialog to narrow the list of projects available to select.

Refer to the “Find Example Project” topic in the PSoC Creator Help for more information.

## Functional Description

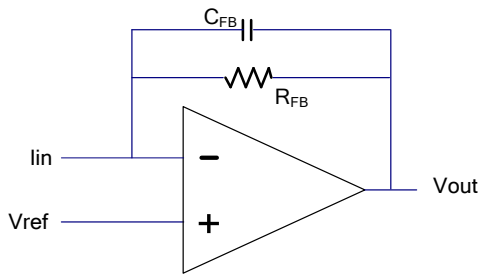
The TIA is constructed from a generic SC/CT block. The topology is an opamp with a selectable feedback resistor from the output to the inverting input. Optionally, a selectable feedback capacitor can also be connected between the output and the inverting input. [Figure 1](#) shows the two possible TIA configurations.

**Figure 1. TIA Configurations**



The output voltage is controlled by adjusting the  $R_{FB}$  feedback resistor (see [Figure 2](#)).  $R_{FB}$  can be set to one of 8 values, between 20k and 1000k ohms, selectable in either the parameter dialog or using the `TIA_SetResFB()` API function.

**Figure 2. TIA Schematic**



The DC output level can be adjusted by adding current to the lin terminal. Positive current (into the terminal) pushes the output negative; negative current (pulling current from the terminal) pushes the output positive. The source of the current can be an internal DAC.

The amplifier bandwidth is determined by the interaction between the feedback resistor  $R_{FB}$  and the selection of the capacitor in parallel with  $R_{FB}$ . The capacitive feedback value  $C_{FB}$  can be set to one of four values in either the parameter dialog or by using the `TIA_SetCapFB()` API function.

The  $-3$  dB frequency  $F_{corner}$  for the amplifier is:

$$F_{corner} = \frac{1}{\sqrt{\frac{1}{(2\pi R_{FB} C_{FB})^2} + \frac{1}{GBW^2}}}$$

where  $GBW = \begin{cases} 200 \text{ KHz} & , \text{ MinimumPower} \\ 400 \text{ KHz} & , \text{ LowPower} \\ 600 \text{ KHz} & , \text{ MediumPower} \\ 1000 \text{ KHz} & , \text{ HighPower} \end{cases}$

## Resources

The TIA uses one SC/CT analog block. Typically, the Vref input is routed from a voltage reference, a VDAC output, or an externally supplied reference on a GPIO.

## API Memory Usage

The component memory usage varies significantly, depending on the compiler, device, number of APIs used and component configuration. The following table provides the memory usage for all APIs available in the given component configuration.

The measurements have been done with the associated compiler configured in Release mode with optimization set for Size. For a specific design the map file generated by the compiler can be analyzed to determine the memory usage.



| Configuration | PSoC 3 (Keil_PK51) |            | PSoC 5LP (GCC) |            |
|---------------|--------------------|------------|----------------|------------|
|               | Flash Bytes        | SRAM Bytes | Flash Bytes    | SRAM Bytes |
| Default       | 204                | 7          | 304            | 5          |

## DC and AC Electrical Characteristics for PSoC 3

Specifications are valid for  $-40\text{ }^{\circ}\text{C} \leq T_A \leq 85\text{ }^{\circ}\text{C}$  and  $T_J \leq 100\text{ }^{\circ}\text{C}$ , except where noted.  
 Specifications are valid for 1.71 V to 5.5 V, except where noted. Typical values are for  $T_A = 25\text{ }^{\circ}\text{C}$ .

### DC Specifications

| Parameter         | Description           | Conditions           | Min | Typ | Max | Units |
|-------------------|-----------------------|----------------------|-----|-----|-----|-------|
| V <sub>IOFF</sub> | Input offset voltage  |                      | –   | –   | 10  | mV    |
| R <sub>conv</sub> | Conversion resistance | R = 20k; 40-pF load  | –25 | –   | +35 | %     |
|                   |                       | R = 30k; 40-pF load  | –25 | –   | +35 | %     |
|                   |                       | R = 40k; 40-pF load  | –25 | –   | +35 | %     |
|                   |                       | R = 80k; 40-pF load  | –25 | –   | +35 | %     |
|                   |                       | R = 120k; 40-pF load | –25 | –   | +35 | %     |
|                   |                       | R = 250k; 40-pF load | –25 | –   | +35 | %     |
|                   |                       | R = 500k; 40-pF load | –25 | –   | +35 | %     |
|                   |                       | R = 1M; 40 pF load   | –25 | –   | +35 | %     |
|                   | Quiescent current     |                      | –   | 1.1 | 2.0 | mA    |

### AC Specifications

| Parameter | Description             | Conditions            | Min  | Typ | Max | Units |
|-----------|-------------------------|-----------------------|------|-----|-----|-------|
| BW        | Input bandwidth (–3 dB) | R = 20k; –40-pF load  | 1500 | –   | –   | kHz   |
|           |                         | R = 120k; –40-pF load | 240  | –   | –   | kHz   |
|           |                         | R = 1M; –40-pF load   | 25   | –   | –   | kHz   |

## DC and AC Electrical Characteristics for PSoC 5LP

Specifications are valid for  $-40\text{ }^{\circ}\text{C} \leq T_A \leq 105\text{ }^{\circ}\text{C}$  and  $T_J \leq 120\text{ }^{\circ}\text{C}$ , except where noted. Specifications are valid for 1.71 V to 5.5 V, except where noted. Typical values are for  $T_A = 25\text{ }^{\circ}\text{C}$ .

### DC Specifications

| Parameter  | Description           | Conditions           | Min | Typ | Max | Units |
|------------|-----------------------|----------------------|-----|-----|-----|-------|
| $V_{IOFF}$ | Input offset voltage  |                      | –   | –   | 10  | mV    |
| $R_{CONV}$ | Conversion resistance | R = 20k; 40-pF load  | –25 | –   | +35 | %     |
|            |                       | R = 30k; 40-pF load  | –25 | –   | +35 | %     |
|            |                       | R = 40k; 40-pF load  | –25 | –   | +35 | %     |
|            |                       | R = 80k; 40-pF load  | –25 | –   | +35 | %     |
|            |                       | R = 120k; 40-pF load | –25 | –   | +35 | %     |
|            |                       | R = 250k; 40-pF load | –25 | –   | +35 | %     |
|            |                       | R = 500k; 40-pF load | –25 | –   | +35 | %     |
|            |                       | R = 1M; 40-pF load   | –25 | –   | +35 | %     |
|            | Quiescent current     |                      | –   | 1.1 | 2   | mA    |

### AC Specifications

| Parameter | Description             | Conditions           | Min  | Typ | Max | Units |
|-----------|-------------------------|----------------------|------|-----|-----|-------|
| BW        | Input bandwidth (–3 dB) | R = 20k; 40-pF load  | 1200 | –   | –   | kHz   |
|           |                         | R = 120k; 40-pF load | 240  | –   | –   | kHz   |
|           |                         | R = 1M; 40-pF load   | 25   | –   | –   | kHz   |

## Component Changes

This section lists the major changes in the component from the previous version.

| Version | Description of Changes   | Reason for Changes / Impact   |
|---------|--|---|
| 2.10.c  | Minor datasheet edits.   |   |
| 2.10.b  | Minor datasheet edits.   |   |
| 2.10.a  | Updated datasheet.   | Removed old references to PSoC 5.<br>Updated DC and AC Electrical Characteristics for PSoC 5LP.<br>Updated API section to remove note from the TIA_Stop() API.  |
| 2.0     | Added variable Vdda support.   |   |
|         | Added MISRA Compliance section.  | The component does not have any specific deviations.  |
| 1.91    | For low voltage VDDA operation uses a boost clock shared by all the SC/CT based components.      | Reduces the number of analog clocks required in the system for boost clocks. With this change a single boost clock is shared instead of using a separate clock for each SC/CT based component.  |
| 1.90    | Added PSoC 5LP support.  |   |
|         | Added all APIs with the CYREENTRANT keyword when they are included in the .cyre file.            | Not all APIs are truly reentrant. Comments in the component API source files indicate which functions are candidates.<br><br>This change is required to eliminate compiler warnings for functions that are not reentrant used in a safe way: protected from concurrent calls by flags or Critical Sections. |
|         | Updated DC and AC Electrical characteristics.<br>Updated Resource and API memory usage sections. |   |
| 1.80    | Modified source file to enable the charge pump when V <sub>D</sub> DA is below 2.7 V             | Charge pump should be enabled below 2.7 V   |
|         | Added DC and AC Electrical characteristics data for PSoC 5 to datasheet                          |   |
| 1.70    | TIA_Stop() API modified for PSoC 5   | Changes required to prevent the component from impacting unrelated analog signals when stopped on PSoC 5  |
|         | Added Debug window support   |   |
|         | Added backward compatibility for register defines  | To provide backward compatibility for TIA_1_10.   |

| Version | Description of Changes  | Reason for Changes / Impact   |
|---------|---|---|
| 1.60    | Updated the Configure dialog.   | Created a customized interface. Added calculated bandwidth to customizer to support Bandwidth display.  |
|         | Removed Min-vdda parameter  | Parameter for min Vdda is not required. Component will auto-recognize the voltage setting and set the block-internal switch pump accordingly. |
|         | Updated TIA component symbol  | TIA component symbol is updated to reflect Resistive Feedback, Capacitive Feedback, Fcorner value.  |
|         | Added characterization data to the datasheet.   |   |
|         | Minor datasheet edits and updates   |   |
| 1.50    | Added Sleep/Wakeup and Init/Enable APIs.  | To support low power modes, as well as to provide common interfaces to separate control of initialization and enabling of most components.    |
|         | TIA parameter Pull-down values are reordered in the ascending order.  | The TIA parameter pull-down values are not in ascending order. The 80k ohm comes after 1000k ohm. Reordered the values accordingly.           |
|         | Changed the minus symbol to be the same length as horizontal stroke in the '+' character.   | Updated the minus symbol to meet the industry standard.   |
|         | Updated a conditional statement to properly enable the charge pump clock for PSoC 3 Production silicon and PSoC 5 ES2 silicon or later. | The charge pump clock was not being enabled properly and therefore SC blocks were not working.  |

© Cypress Semiconductor Corporation, 2012-2017. This document is the property of Cypress Semiconductor Corporation and its subsidiaries, including Spansion LLC ("Cypress"). This document, including any software or firmware included or referenced in this document ("Software"), is owned by Cypress under the intellectual property laws and treaties of the United States and other countries worldwide. Cypress reserves all rights under such laws and treaties and does not, except as specifically stated in this paragraph, grant any license under its patents, copyrights, trademarks, or other intellectual property rights. If the Software is not accompanied by a license agreement and you do not otherwise have a written agreement with Cypress governing the use of the Software, then Cypress hereby grants you a personal, non-exclusive, nontransferable license (without the right to sublicense) (1) under its copyright rights in the Software (a) for Software provided in source code form, to modify and reproduce the Software solely for use with Cypress hardware products, only internally within your organization, and (b) to distribute the Software in binary code form externally to end users (either directly or indirectly through resellers and distributors), solely for use on Cypress hardware product units, and (2) under those claims of Cypress's patents that are infringed by the Software (as provided by Cypress, unmodified) to make, use, distribute, and import the Software solely for use with Cypress hardware products. Any other use, reproduction, modification, translation, or compilation of the Software is prohibited.

TO THE EXTENT PERMITTED BY APPLICABLE LAW, CYPRESS MAKES NO WARRANTY OF ANY KIND, EXPRESS OR IMPLIED, WITH REGARD TO THIS DOCUMENT OR ANY SOFTWARE OR ACCOMPANYING HARDWARE, INCLUDING, BUT NOT LIMITED TO, THE IMPLIED WARRANTIES OF MERCHANTABILITY AND FITNESS FOR A PARTICULAR PURPOSE. To the extent permitted by applicable law, Cypress reserves the right to make changes to this document without further notice. Cypress does not assume any liability arising out of the application or use of any product or circuit described in this document. Any information provided in this document, including any sample design information or programming code, is provided only for reference purposes. It is the responsibility of the user of this document to properly design, program, and test the functionality and safety of any application made of this information and any resulting product. Cypress products are not designed, intended, or authorized for use as critical components in systems designed or intended for the operation of weapons, weapons systems, nuclear installations, life-support devices or systems, other medical devices or systems (including resuscitation equipment and surgical implants), pollution control or hazardous substances management, or other uses where the failure of the device or system could cause personal injury, death, or property damage ("Unintended Uses"). A critical component is any component of a device or system whose failure to perform can be reasonably expected to cause the failure of the device or system, or to affect its safety or effectiveness. Cypress is not liable, in whole or in part, and you shall and hereby do release Cypress from any claim, damage, or other liability arising from or related to all Unintended Uses of Cypress products. You shall indemnify and hold Cypress harmless from and against all claims, costs, damages, and other liabilities, including claims for personal injury or death, arising from or related to any Unintended Uses of Cypress products.

Cypress, the Cypress logo, Spansion, the Spansion logo, and combinations thereof, WICED, PSoC, CapSense, EZ-USB, F-RAM, and Traveo are trademarks or registered trademarks of Cypress in the United States and other countries. For a more complete list of Cypress trademarks, visit [cypress.com](http://cypress.com). Other names and brands may be claimed as property of their respective owners.

