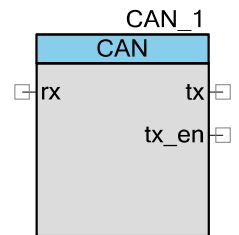


Controller Area Network (CAN)

2.1

Features

- CAN2.0 A/B protocol implementation, ISO 11898-1 compliant
- Programmable bit rate up to 1 Mbps at 8 MHz (BUS_CLK)
- Two- or three-wire interface to external transceiver (Tx, Rx, and Enable)
- Extended hardware message filter that covers Data Byte 1 and Data Byte 2 fields
- Programmable transmit priority: Round Robin and Fixed
- Not supported on PSoC 5



General Description

The Controller Area Network (CAN) controller implements the CAN2.0A and CAN2.0B specifications as defined in the Bosch specification and conforms to the ISO-11898-1 standard.

When to Use a CAN

The CAN protocol was originally designed for automotive applications with a focus on a high level of fault detection. This ensures high communication reliability at a low cost. Because of its success in automotive applications, CAN is used as a standard communication protocol for motion-oriented machine-control networks (CANOpen) and factory automation applications (DeviceNet). The CAN controller features allow you to efficiently implement higher-level protocols, without affecting the performance of the microcontroller CPU.

Input/Output Connections

This section describes the input and output connections for the CAN component. An asterisk (*) in the list of I/Os indicates that the I/O may be hidden on the symbol under the conditions listed in the description of that I/O.

rx – Input

CAN bus receive signal (connected to the CAN Rx bus of the external transceiver).

tx– Output

CAN bus transmit signal, (connected to the CAN Tx bus of the external transceiver).

tx_en – Output *

External transceiver enable signal. This output displays when the **Add Transceiver Enable Signal** option is selected in the **Configure** dialog.

interrupt – Output *

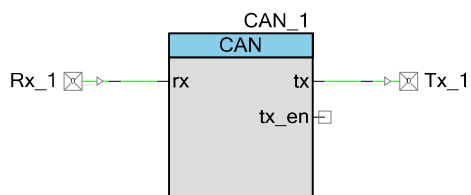
The interrupt output is driven by the interrupt sources configured in the CAN hardware. All sources are ORed together to create the final output signal. The sources of the interrupt can be:

- Message Transmitted
- Message Received
- Receive Buffer Full
- Bus Off State
- CRC Error Detected
- Message Format Error Detected
- Message Acknowledge, Error Detected
- Bit Stuffing Error Detected
- Bit Error Detected
- Overload Frame Received
- Arbitration Lost Detected

This output displays when the **Enable External Interrupt Line** option is selected in the **Advanced Interrupt Configuration...** window of the **Interrupt** tab of the **Configure** dialog.

Schematic Macro Information

The default CAN in the Component Catalog is a schematic macro using a CAN component with default settings. The CAN component is connected to an Input and an Output Pins component. The Pins components are also configured with default settings, except that Input Synchronized is set to false in the Input Pin component.



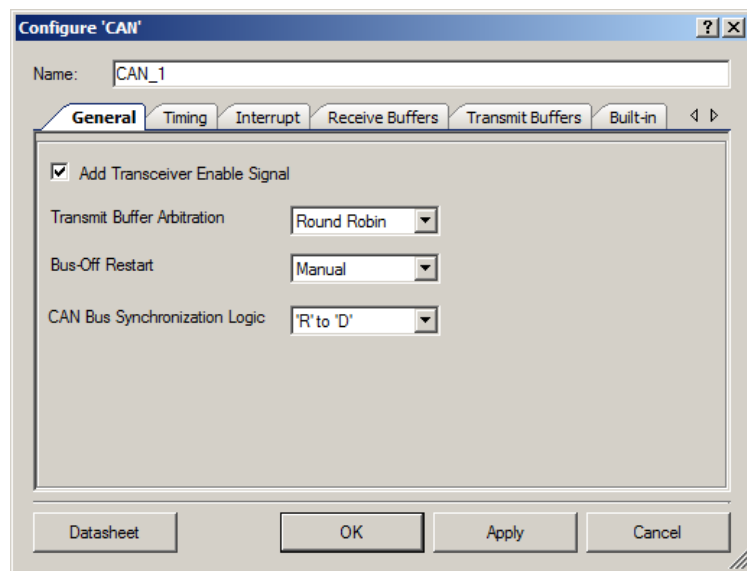
Component Parameters

Drag a CAN component onto your design and double-click it to open the **Configure** dialog. This dialog has several tabs to guide you through the process of setting up the CAN component.

Component Update Note

If you are updating the CAN component from a previous version, you will see that many of the parameters have been given a new format. You must convert these. To do this, open the **Configure** dialog, change at least one parameter option, and click **OK** to save the change.

General Tab



The **General** tab contains the following settings:



Add Transceiver Enable Signal

Enables or disables the use of the tx_en signal for the external CAN transceiver. Enabled by default.

Transmit Buffer Arbitration

Defines the message transmission arbitration scheme:

- **Round Robin** (default) – Buffers are served in a defined order: 0-1-2 ... 7-0-1. A particular buffer is only selected if its TxReq flag is set. This scheme guarantees that all buffers have the same probability to send a message.
- **Fixed priority** – Buffer 0 has the highest priority. This way you can designate buffer 0 as the buffer for error messages and guarantee that they are sent first.

Bus-Off Restart

Configures the reset type:

- **Manual** (default) – After the bus is turned off, you must restart the CAN. This is the recommended setting.
- **Automatic** – After the bus is turned off, the CAN controller restarts automatically after 128 groups of 11 recessive bits.

CAN Bus Synchronization Logic

Configures edge synchronization:

- **'R' to 'D'** (default) – The edge from 'R'(recessive) to 'D'(dominant) is used for synchronization.
- **Both edges** – Both edges are used for synchronization.



Timing Tab

Configure 'CAN'

Name: CAN_1

General Timing Interrupt Receive Buffers Transmit Buffers Built-in

Settings

BRP: 0 Tseg1: 13 Tseg2: 2

Calculator

Clock Frequency: 8000 KHz Desired Baud Rate: 500 Kbps SJW: 1 Sample Mode: 1-Sample

BRP	Time Quantum	Tseg1	Tseg2	Sample Point	Variance
0	16	13	2	87	0
0	16	12	3	81	0
0	16	11	4	75	0

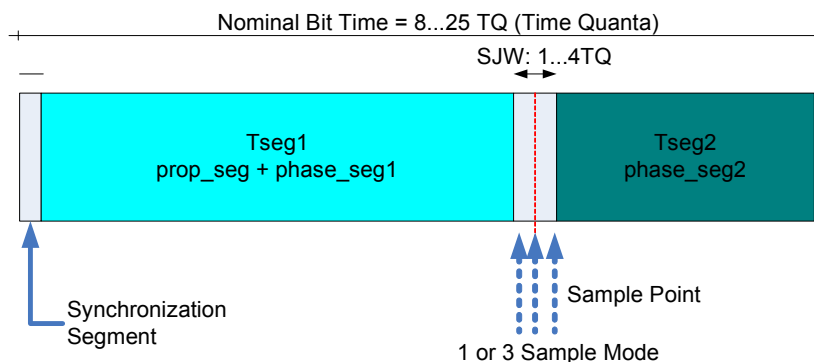
Datasheet OK Apply Cancel

The **Timing** tab contains the following settings:

Settings

- **BRP** – Bit Rate Prescaler value for generating the time quantum. The bit timing calculator calculates this value. 0 indicates one clock; 7FFFh indicates 32767 clock cycles, 15 bits.
- **Tseg1** – Value of time segment 1.
- **Tseg2** – Value of time segment 2. Values 0 and 1 are not allowed; 2 is allowed only when you set **Sample Mode** to direct sampling (**1-Sample**).

The following shows the CAN bit timing representation:



Calculator

- **Clock Frequency** (in MHz) – The system clock frequency equal to BUS_CLK.
- **Desired Baud Rate** (in Kbps) – Options are: **10, 20, 62.5, 125, 250, 500, 800, or 1000**.
- **SJW** – Configuration of synchronization jump width (2 bits). The value must be less than or equal to Tseg1 and less than or equal to Tseg2. Options are: **1, 2, 3, or 4**.
- **Sample Mode** – Configuration of sampling mode. Options are: **1-Sample or 3-Sample**.

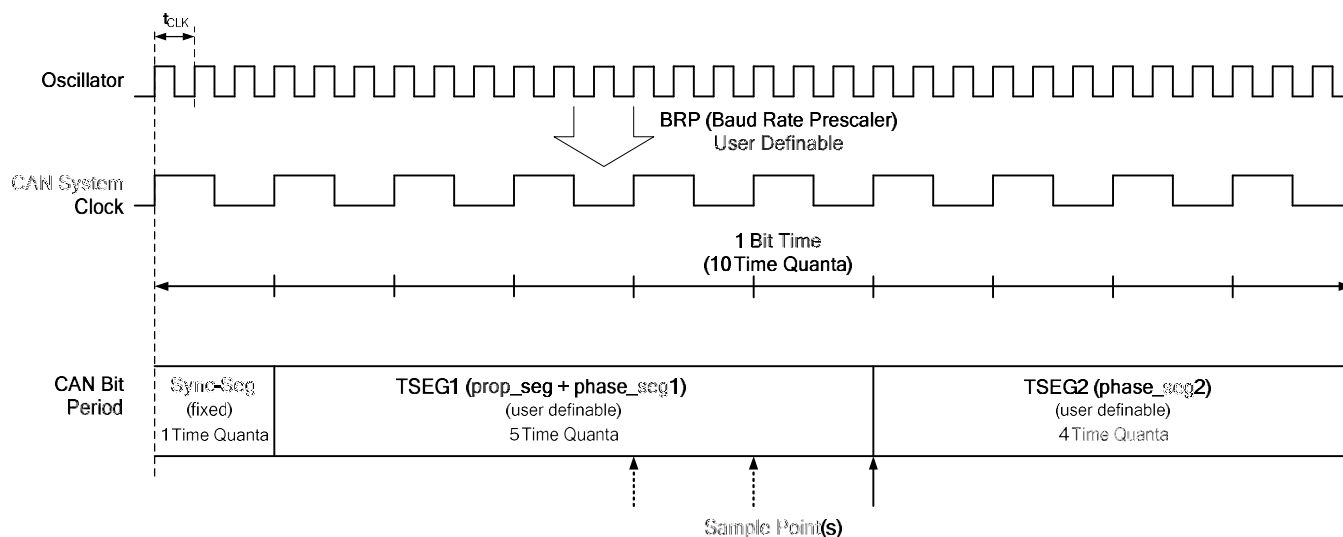
Table

After bit timing is calculated, the proposed register settings for time segments (Tseg1 and Tseg2) and BRP are displayed in the parameter table. You can select the values to be loaded by double-clicking the appropriate row. The selected values are displayed in the top **Settings** input boxes.

You may also choose to enter values manually for Tseg1, Tseg2, and BRP in the provided input boxes.

Note Incorrect bit timing settings can cause the CAN controller to remain in an error state.

The following diagram shows an example of how all timing is derived from the oscillator.



Bit Time Segments

SYNC SEG (Synchronization Segment)

This part of the bit time synchronizes the various nodes on the bus. An edge is expected to lie within this segment.

PROP SEG (Propagation Time Segment)

This part of the bit time compensates for the physical delay times within the network. It is twice the sum of the signal's propagation time on the bus line, the input comparator delay, and the output driver delay.

PHASE SEG1, PHASE SEG2 (Phase Buffer Segment1/2)

These phase-buffer segments compensate for edge phase errors. These segments can be lengthened or shortened by resynchronization.

Sample Point

The sample point is the point in time at which the bus level is read and interpreted as the value of that respective bit. It is located at the end of PHASE_SEG1.

Information Processing Time

The information processing time is the time segment starting with the sample point reserved for calculating the subsequent bit level.

Time Quantum

The time quantum is a fixed unit of time derived from the oscillator period. There is a programmable prescaler (BRP), with integral values ranging from 1 to 32767. Starting with the minimum time quantum, the time quantum can have a length of

$$\text{TIME QUANTUM} = m \times \text{MINIMUM TIME QUANTUM}$$

where m is the value of the prescaler.

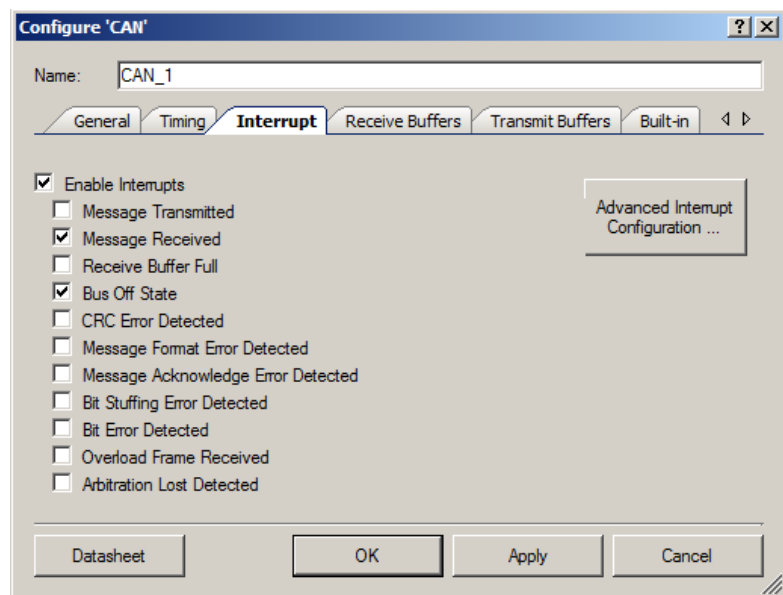
Length of Time Segments

- SYNC_SEG is 1 time quantum long.
- PROP_SEG is programmable to be 1, 2, ..., 8 time quanta long.
- PHASE_SEG1 is programmable to be 1, 2, ..., 8 time quanta long.
- PHASE_SEG2 is the maximum of PHASE_SEG1 and the information processing time



Interrupt Tab

Basic Interrupt Configuration



The **Basic Interrupt Configuration** tab contains the following settings:

Enable Interrupts

Enables or disables global interrupts from the CAN controller. Enabled by default.

Enabled – Global interrupts are enabled when the CAN component is started using `CAN_Start()`.

Disabled – Global interrupts are not enabled when the CAN component is started using `CAN_Start()`. The CAN ISR is not entered until the global interrupt enable bit is set. It is your responsibility to enable or disable global interrupts in main code, using `CAN_GlobalIntEnable()` or `CAN_GlobalIntDisable()`.

Message Transmitted

Enables or disables message transmitted interrupts, which indicate that a message was sent. Disabled by default.. When disabling the Message Transmitted interrupt option, the CAN displays the following message: **Do you wish to disable all Transmit Buffers Interrupts?**

- **Yes** – Uncheck the **Message Transmitted** check box, and uncheck all individual transmit buffer interrupts on the **Transmit Buffers** tab.
- **No** (default) – Uncheck the **Message Transmitted** check box, and keep all individual transmit buffer interrupts on the **Transmit Buffers** tab as they are.
- **Cancel** – No changes.

Message Received

Enables or disables message received interrupts, which indicate that a message was received. Enabled by default.. When disabling the Message Received interrupt option, the CAN displays the following message: **Do you wish to disable all Receive Buffers Interrupts?**

- **Yes** (default) – Uncheck the **Message Received** check box, and uncheck all individual receive buffer interrupts on the **Receive Buffers** tab.
- **No** – Uncheck the **Message Received** check box, and keep all individual receive buffer interrupts on the **Receive Buffers** tab as they are.
- **Cancel** – No changes.

Receive Buffer Full

Enables or disables the message lost interrupt, which indicates that the CAN controller received a new message when the previous message was not acknowledged. Disabled by default.

Bus Off State

Enables or disables the bus off interrupt, which indicates that the CAN node has reached the Bus Off state. Enabled by default.

CRC Error Detected

Enables or disables the CRC error interrupt, which indicates that the CAN controller detected a CAN CRC error. Disabled by default.

Message Format Error Detected

Enables or disables the message format error interrupt, which indicates that the CAN controller detected a CAN message format error. Disabled by default.

Message Acknowledge Error Detected

Enables or disables the message acknowledge error interrupt, which indicates that the CAN controller detected a CAN message acknowledge error. Disabled by default.

Bit Stuffing Error Detected

Enables or disables the bit stuffing error interrupt, which indicates that the CAN controller detected a bit stuffing error. Disabled by default.

Bit Error Detected

Enables or disables the bit error interrupt, which indicates that the CAN controller detected a bit error. Disabled by default.



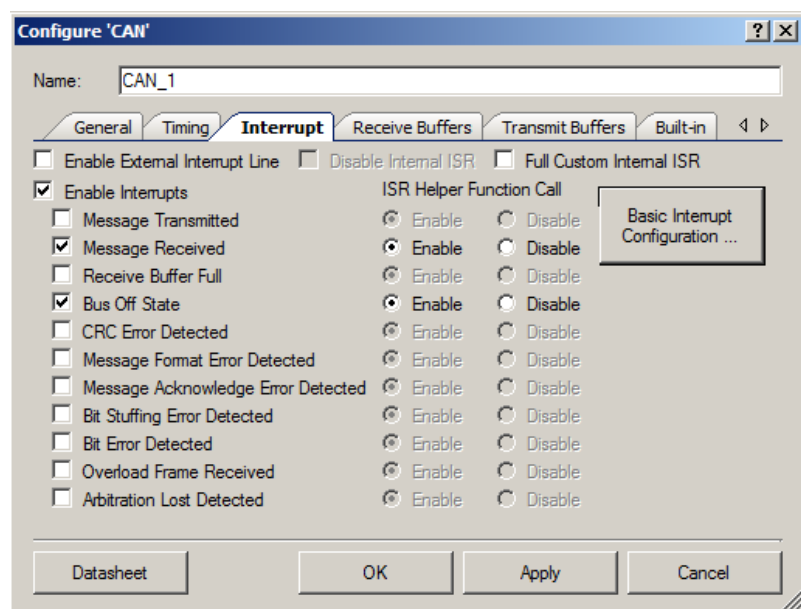
Overload Frame Received

Enables or disables the overload interrupt, which indicates that the CAN controller received an overload frame. Disabled by default.

Arbitration Lost Detected

Enables or disables managing arbitration and cancellation of queued messages. This interrupt indicates that the arbitration was lost while sending a message. Disabled by default.

Advanced Interrupt Configuration



The **Advanced Interrupt Configuration** tab contains the following settings:

Enable External Interrupt Line

Enables the external visibility and connectivity of the CAN block interrupt line. Disabled by default (an external interrupt line is not visible in the CAN component symbol instance).

Disable Internal ISR

Disables or bypasses the internal ISR component. If the internal ISR is disabled, the relevant CAN APIs do not manage the ISR start/stop processes. Disabled by default (the internal ISR is enabled). The check box is available (not grayed out) only if **Enable External Interrupt Line** is selected. You can disable the internal ISR only if there is an alternative means (external interrupt line) to handle interrupts.

Full Custom Internal ISR

Enables the use of the internal ISR with fully custom code. When this option is selected, the CAN_ISR contains no code other than the optional PSoC 3 ES1/ES2 ISR patch. Put your custom code between the lines:

```
/* Place your Interrupt code here. */  
/* `#START CAN_ISR` */  
  
/* `#END` */
```

Disabled by default (default to CAN v1.50 ISR handling). The check box is not available (grayed out) if **Disable Internal ISR** is selected.

ISR Helper Function Call

If you select only the basic interrupt settings (for example, as in CAN v1.50), the CAN ISR calls relevant user-customizable functions (ISR helpers) based on the enabled interrupts, when an interrupt occurs.

These options allow you to enable or disable ISR helper calls, so that custom handling of specific interrupts can be implemented both in hardware and firmware. Default is **Enable**. These options are available only if the relevant interrupt event is enabled AND **Full Custom Internal ISR** is not selected AND **Disable Internal ISR** is not selected.



Receive Buffers Tab

Configure 'CAN'

Name: CAN_1

General Timing Interrupt **Receive Buffers** Transmit Buffers Built-in

Mailbox	Full	Basic	IDE	ID	RTR	RTRreply	IRQ	Linking
0	<input checked="" type="checkbox"/>	<input type="checkbox"/>	<input type="checkbox"/>	0x001	<input type="checkbox"/>	<input type="checkbox"/>	<input type="checkbox"/>	<input checked="" type="checkbox"/>
1	<input checked="" type="checkbox"/>	<input type="checkbox"/>	<input type="checkbox"/>	0x001	<input type="checkbox"/>	<input type="checkbox"/>	<input type="checkbox"/>	<input checked="" type="checkbox"/>
2	<input checked="" type="checkbox"/>	<input type="checkbox"/>	<input type="checkbox"/>	0x001	<input type="checkbox"/>	<input type="checkbox"/>	<input type="checkbox"/>	<input checked="" type="checkbox"/>
3	<input checked="" type="checkbox"/>	<input type="checkbox"/>	<input type="checkbox"/>	0x001	<input type="checkbox"/>	<input type="checkbox"/>	<input checked="" type="checkbox"/>	<input type="checkbox"/>
4	<input checked="" type="checkbox"/>	<input type="checkbox"/>	<input type="checkbox"/>	0x430	<input type="checkbox"/>	<input type="checkbox"/>	<input checked="" type="checkbox"/>	<input type="checkbox"/>
5	<input checked="" type="checkbox"/>	<input type="checkbox"/>	<input type="checkbox"/>	0x255	<input checked="" type="checkbox"/>	<input checked="" type="checkbox"/>	<input type="checkbox"/>	<input type="checkbox"/>
6	<input type="checkbox"/>	<input checked="" type="checkbox"/>	<input type="checkbox"/>		<input type="checkbox"/>	<input type="checkbox"/>	<input type="checkbox"/>	<input type="checkbox"/>
7	<input type="checkbox"/>	<input type="checkbox"/>	<input type="checkbox"/>		<input type="checkbox"/>	<input type="checkbox"/>	<input type="checkbox"/>	<input type="checkbox"/>
8	<input type="checkbox"/>	<input type="checkbox"/>	<input type="checkbox"/>		<input type="checkbox"/>	<input type="checkbox"/>	<input type="checkbox"/>	<input type="checkbox"/>
9	<input type="checkbox"/>	<input type="checkbox"/>	<input type="checkbox"/>		<input type="checkbox"/>	<input type="checkbox"/>	<input type="checkbox"/>	<input type="checkbox"/>
10	<input type="checkbox"/>	<input type="checkbox"/>	<input type="checkbox"/>		<input type="checkbox"/>	<input type="checkbox"/>	<input type="checkbox"/>	<input type="checkbox"/>
11	<input type="checkbox"/>	<input type="checkbox"/>	<input type="checkbox"/>		<input type="checkbox"/>	<input type="checkbox"/>	<input type="checkbox"/>	<input type="checkbox"/>

Datasheet OK Apply Cancel

The **Receive Buffers** tab contains the following settings:

Mailbox

A receive mailbox is disabled until **Full** or **Basic** is selected. The **IDE**, **ID**, **RTR**, **RTRreply**, and **IRQ** fields are locked for all disabled mailboxes.

For Full mailboxes, the **Mailbox** field is editable and you can enter a unique mailbox name. The API provided to manage each mailbox will have the mailbox string appended. Accepted symbols are: A–Z, a–z, 0–9, and **_**. If you enter an incorrect name, an error message displays and the **Mailbox** field returns to the default value.

Full

When **Full** is selected, you can modify the **Mailbox**, **IDE**, **ID**, **RTR**, **RTRreply**, **IRQ**, and **Linking** fields. The fields are initialized with the following default values:

- **Mailbox** = Mailbox number 0 to 15
- **IDE** = Cleared
- **ID** = 0x001
- **RTR** = Cleared
- **RTRreply** = Cleared and locked (enabled only when **RTR** is selected)

- **IRQ** = Selected, available only if the **Message Received (Interrupt tab)** interrupt is selected
- **Linking** = Cleared

Basic

If **Basic** is selected, the options **IDE**, **ID**, **RTR**, and **RTRreply** are unavailable. The fields are initialized with the following default values:

- **IDE** = Cleared (unavailable)
- **ID** = <All> (unavailable)
- **RTR** = Cleared (unavailable)
- **RTRreply** = Cleared (unavailable)
- **IRQ** = Cleared, available only if the **Message Received** interrupt is selected
- **Linking** = Cleared

IDE

When the **IDE** check box is cleared the identifier is limited to 11 bits (0x001 to 0x7FE). When **IDE** is selected the identifier is limited to 29 bits (0x00000001 to 0x1FFFFFFF).

RTR - Remote Transmission Request

Available only for mailboxes set up to receive Full CAN messages. When selected, it configures the acceptance filter settings to only allow receipt of messages whose RTR bit is set.

RTRreply - Remote Transmission Request Auto Reply

Available only for mailboxes set up to receive Full CAN messages, with the RTR bit set. When selected, it automatically replies to an RTR request with the content of the receive buffer.

IRQ

When enabling the IRQ for a mailbox, if the **Message Received Interrupt** in the **Interrupt** tab is cleared, the following message is displayed: **Global “Message Received Interrupt” is disabled. Do you wish to enable it?**

- **Yes** – Select the **IRQ** check box and select the **Message Received Interrupt** check box on the **Interrupt** tab.
- **No or Cancel** – Select the **IRQ** check box and leave the **Message Received Interrupt** check box in the **Interrupt** tab as is.



Linking

The **Linking** check box allows the linking of several sequential receive mailboxes to create an array of receive mailboxes. This array acts like a receive FIFO. All mailboxes of the same array must have the same message filter settings; that is, the acceptance mask register (AMR) and acceptance code register (ACR) are identical.

- The last mailbox of an array cannot have its linking flag set.
- The last mailbox 15 cannot have its linking flag set.
- All linked mailboxes are highlighted with the same color.
- Only the first mailbox in the linked array is editable. All parameters are automatically applied to all linked mailboxes within the same array.
- One function is generated for all linked mailboxes.

Receive Message Functions

Every Full RX mailbox has a predefined API. The function list is available in the `CAN_1_TX_RX_func.c` project file. These functions are conditionally compiled depending on the receive mailbox setting. Only mailboxes defined as Full have their respective functions compiled.

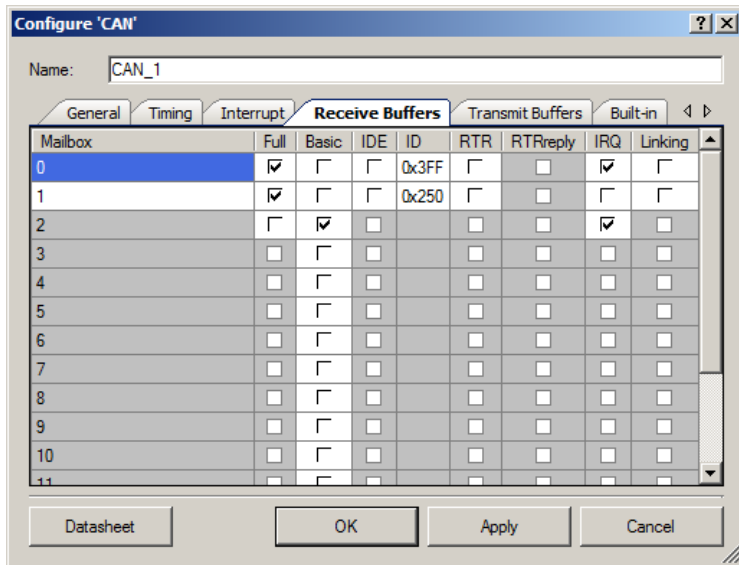
The macro identifier `CAN_1_RXx_FUNC_ENABLE` defines whether a function is compiled. Defines are listed in the `CAN_1.h` project file.

- When a message-received interrupt occurs, the `CAN_MsgRXIsr()` function is called. This function loops through all receive mailboxes and checks their respective “Message Available Flag” (MsgAv – Read: 0 No new message available; 1 New message available) and “Interrupt Enable” (Receive Interrupt Enable: 0 Interrupt generation is disabled, 1 Interrupt generation is enabled) for successful receipt of a CAN message.
- If the **Message Receive** interrupt is enabled, when a message is received the `CAN_ReceiveMsgX()` function is called, where *X* indicates the Full CAN mailbox number or user-defined name.
- For all interrupt-based Basic CAN mailboxes, the `CAN_ReceiveMsg(uint8 rxMailbox)` function is called, where the `rxMailbox` parameter indicates the number of the mailbox that received the message.



Receive Buffers Configuration

The following is an example to illustrate the use of the receive-message APIs.



CAN_1.h file:

```
...
#define CAN_1_RX0_FUNC_ENABLE 1
#define CAN_1_RX1_FUNC_ENABLE 0
#define CAN_1_RX2_FUNC_ENABLE 1
...
```

CAN_1_TX_RX_func.c file:

```
#if(CAN_1_RX0_FUNC_ENABLE)
void CAN_1_ReceiveMsg0(void)
{
    /* `#START MESSAGE_0_RECEIVED` */

    /* `#END` */

    CAN_1_RX[0].rxcmd.byte[0] |= CAN_1_RX_ACK_MSG;
}
#endif

#if(CAN_1_RX1_FUNC_ENABLE)
void CAN_1_ReceiveMsg1(void)
{
    /* `#START MESSAGE_1_RECEIVED` */

    /* `#END` */

    CAN_1_RX[1].rxcmd.byte[0] |= CAN_1_RX_ACK_MSG;
}
#endif
```



The following function is called for CAN Receive Message 2, configured as Basic CAN with interrupt enabled.

```
void CAN_ReceiveMsg(uint8 rxMailbox)
{
    if (CAN_1_RX[rxMailbox].rxcmd.byte[0] & CAN_1_RX_ACK_MSG)
    {
        /* `#START MESSAGE_BASIC_RECEIVED` */

        /* `#END` */
        CAN_1_RX[rxMailbox].rxcmd.byte[0] |= CAN_1_RX_ACK_MSG;
    }
}
```

CAN_1_INT.c file

```
void CAN_1_MsgRXIsr(void)
{
    ...
    /* RX Full mailboxes handler */
    switch(i)
    {
        case 0 : CAN_ReceiveMsg0();
                break;
        case 1 : CAN_ReceiveMsg1();
                break;
        default:
                break;
    }
    ...
}
```

If linking is implemented, conditional compile applies to the mailbox with the IRQ flag set. All receive functions acknowledge message receipt by clearing the Message Available (MsgAv) flag.

How to Set AMR and ACR to Accept Range of IDs

The following is the ACR/AMR register representation:

```
[31:3] - Identifier(ID[31:21] - identifier when IDE = 0, ID[31:3] - identifier
when IDE = 1), [2] - IDE, [1] - RTR, [0] - N/A;
```

The acceptance mask register (AMR) defines whether the incoming bit is checked against acceptance code register (ACR).

- AMR: '0' The incoming bit is checked against the respective ACR. The message is not accepted when the incoming bit does not match the respective ACR bit.
- '1' The incoming bit is don't care.

For example, to set up the mailbox to receive a range of IDs of 0x180–187, IDE = 0 (cleared), RTR = 0 (cleared), mailbox 5, perform the following additional actions:



Take the low range of ID, for instance 0x180, and IDE and RTR accordingly. For this ID, IDE, and RTR values, AMR and ACR registers are set to values:

- ACR[31:21] = 0x180 AMR[31:21] = 0x0
- ACR[20:3] = 0x0 AMR[20:3] = 0x3FFFF (all ones)
- ACR[2] = 0 AMR[2] = 0
- ACR[1] = 0 AMR[1] = 0
- ACR[0] = 0 AMR[0] = 0

Define the common part of the range ID (11bit):

- 0x180 = 0`b001 1000 0000
- 0x187 = 0`b001 1000 0111
- Mask = 0`b001 1000 0XXX
- ACR[31:21] = 0`b000 0000 0111

You must put 1s instead of “XXX” and nulls instead of common bits into the AMR register. So, the next values are:

- ACR[31:21] = 0x180 AMR[31:21] = 0x7;
- ACR[20:3] = 0x0 AMR[20:3] = 0x3FFFF - all ones;
- ACR[2] = 0 AMR[2] = 0
- ACR[1] = 0 AMR[1] = 0
- ACR[0] = 0 AMR[0] = 0

Use the CAN_RXRegisterInit() function to write the AMR register of mailbox number 5:

```
uint8 result = FAIL;
uint16 temp_amr;
uint16 temp_acr;

/* Upper address value, so address is shifted */
temp_amr = (0x7 << 21);      /* obtain necessary value to put in AMR */
temp_acr = (0x180 << 21);    /* obtain necessary value to put in ACR */

if (CAN_RXRegisterInit(&CAN_1_RX[5].rxamr, temp_amr))
{
    if ((CAN_RXRegisterInit(&CAN_1_RX[5].rxacr, temp_acr))
        result = SUCCESS;
    }
}
return result; /* error - if return no zero value; */
```



For additional details about AMR and ACR configuration, see the Controller Area Network (CAN) chapter in the *PSoC[®] 3 and PSoC 5[®] Technical Reference Manual*.

Transmit Buffers Tab

Configure 'CAN'

Name: CAN_1

General Timing Interrupt Receive Buffers **Transmit Buffers** Built-in

Mailbox	Full	Basic	IDE	ID	RTR	DLC	IRQ
my_1	<input checked="" type="checkbox"/>	<input type="checkbox"/>	<input type="checkbox"/>	0x001	<input type="checkbox"/>	8	<input type="checkbox"/>
1	<input checked="" type="checkbox"/>	<input type="checkbox"/>	<input type="checkbox"/>	0x002	<input type="checkbox"/>	6	<input checked="" type="checkbox"/>
2	<input checked="" type="checkbox"/>	<input type="checkbox"/>	<input type="checkbox"/>	0x003	<input type="checkbox"/>	8	<input type="checkbox"/>
3	<input checked="" type="checkbox"/>	<input type="checkbox"/>	<input checked="" type="checkbox"/>	0x00000001	<input type="checkbox"/>	8	<input checked="" type="checkbox"/>
4	<input checked="" type="checkbox"/>	<input type="checkbox"/>	<input checked="" type="checkbox"/>	0x00000002	<input type="checkbox"/>	8	<input checked="" type="checkbox"/>
5	<input type="checkbox"/>	<input checked="" type="checkbox"/>	<input type="checkbox"/>		<input type="checkbox"/>	8	<input checked="" type="checkbox"/>
6	<input type="checkbox"/>	<input checked="" type="checkbox"/>	<input checked="" type="checkbox"/>		<input type="checkbox"/>	8	<input checked="" type="checkbox"/>
7	<input type="checkbox"/>	<input checked="" type="checkbox"/>	<input type="checkbox"/>		<input type="checkbox"/>	8	<input type="checkbox"/>

Datasheet OK Apply Cancel

The **Transmit Buffers** tab contains the following settings:

Mailbox

For Full mailboxes, the **Mailbox** field is editable and you can enter a unique mailbox name. The function provided to manage each mailbox will have the mailbox string appended.. The accepted characters are: A–Z, a–z, 0–9, and `_`. If you enter an incorrect name, the **Mailbox** field reverts to the default value.

Full

When **Full** is selected, you can modify the **Mailbox**, **IDE**, **ID**, **RTR**, **RTRreply**, **IRQ**, and **Linking** fields. The fields are initialized with the following default values::

- **Mailbox** = Number 0 to 7
- **IDE** = Cleared
- **ID** = 0x01

- **RTR** = Cleared
- **DLC** = 8
- **IRQ** = Cleared

Basic

By default, the **Basic** check box is selected for all of the mailboxes. If **Basic** is selected, the options **ID**, **RTR**, and **DLC** are unavailable. If **Basic** is selected, enter the required CAN message fields using code. The fields are initialized with the following default values::

- **IDE** = Cleared
- **ID** = Nothing (unavailable)
- **RTR** = Cleared (unavailable)
- **DLC** = 8 (unavailable)
- **IRQ** = Cleared

IDE

If the IDE check box is cleared, the identifier cannot be greater than 11 bits (from 0x001 to 0x7FE). If IDE is selected, a 29-bit identifier is allowed (from 0x00000001 to 0x1FFFFFFE). You cannot choose identifiers of 0x000 or 0x7FF (11-bit) or 0x1FFFFFFF (29 bit).

ID

The message identifier.

RTR

The message is a Return Transmission Request message.

DLC

The number of bytes the message contains.

IRQ

The IRQ bit depends on **Message Transmitted (Interrupt tab)**.

If the **Message Transmitted** check box is cleared, when selecting the **IRQ**, the message appears: **Global “Message Transmitted Interrupt” is disabled. Do you wish to enable it?**

- **Yes** – Select **IRQ** and the **Message Transmitted Interrupt** check box in the **Interrupt** tab.



- **No** or **Cancel** – Select **IRQ**. The **Message Transmitted Interrupt** check box in the **Interrupt** tab remains cleared.

CAN TX Functions

Every Full TX mailbox has a predefined API. The function list is available in the *CAN_1_TX_RX_func.c* project file. These functions are conditionally compiled depending on the transmit mailbox setting. Only mailboxes defined as Full have their respective functions compiled.

The macro identifier *CAN_1_TXx_FUNC_ENABLE* defines whether a function is compiled. Defines are listed in the *CAN_1.h* project file.

The *CAN_SendMsgX()* function is provided for all Tx mailboxes configured as Full, where *X* indicates the Full CAN mailbox number or user-defined name.

Transmit Buffers Configuration

The following is an example to illustrate the use of the transmit APIs.

Configure 'CAN' dialog box, Transmit Buffers tab. The Name field is set to CAN_1. The table below shows the configuration for each mailbox:

Mailbox	Full	Basic	IDE	ID	RTR	DLC	IRQ
0	<input checked="" type="checkbox"/>	<input type="checkbox"/>	<input type="checkbox"/>	0x001	<input type="checkbox"/>	8	<input type="checkbox"/>
1	<input type="checkbox"/>	<input checked="" type="checkbox"/>	<input type="checkbox"/>		<input type="checkbox"/>	8	<input type="checkbox"/>
2	<input type="checkbox"/>	<input checked="" type="checkbox"/>	<input type="checkbox"/>		<input type="checkbox"/>	8	<input type="checkbox"/>
3	<input type="checkbox"/>	<input checked="" type="checkbox"/>	<input type="checkbox"/>		<input type="checkbox"/>	8	<input type="checkbox"/>
4	<input type="checkbox"/>	<input checked="" type="checkbox"/>	<input type="checkbox"/>		<input type="checkbox"/>	8	<input type="checkbox"/>
5	<input type="checkbox"/>	<input checked="" type="checkbox"/>	<input type="checkbox"/>		<input type="checkbox"/>	8	<input type="checkbox"/>
6	<input type="checkbox"/>	<input checked="" type="checkbox"/>	<input type="checkbox"/>		<input type="checkbox"/>	8	<input type="checkbox"/>
7	<input type="checkbox"/>	<input checked="" type="checkbox"/>	<input type="checkbox"/>		<input type="checkbox"/>	8	<input type="checkbox"/>

Buttons at the bottom: Datasheet, OK, Apply, Cancel.

CAN_1.h file

```
#define CAN_1_TX0_FUNC_ENABLE 1
#define CAN_1_TX1_FUNC_ENABLE 0
```

CAN_1_TX_RX_func.c file

```

#if(CAN_1_TX0_FUNC_ENABLE)
uint8 CAN_1_SendMsg0(void)
{
    uint8 result = SUCCESS;
    if (CAN_1_TX[0u].txcmd.byte[0u] & CAN_1_TX_REQUEST_PENDING) ==
        CAN_1_TX_REQUEST_PENDING)
    {
        result = CAN_FAIL;
    }
    else
    {
        /* `#START MESSAGE_0_TRANSMITTED` */

        /* `#END` */

        CY_SET_REG32((reg32 *) & CAN_1_TX[0u] |= txcmd CAN_SEND_MESSAGE);
    }

    return result;
}
#endif

```

The common function provided for all Basic Transmit mailboxes is:

```
uint8 CAN_SendMsg(CAN_TX_MSG *message)
```

A generic structure is defined for the application used to assemble the required data for a CAN transmit message:

- ID – The restriction if the ID slot includes:
 - ❑ For a standard message (IDE = 0) identifier limited to 11 bits (0x001 to 0x7FE).
 - ❑ For an extended message (IDE = 1) identifier limited to 29 bits (0x00000001 to 0x1FFFFFFE)
- RTR (0 – Standard message, 1 – 0xFF: RTR bit set in the message)
- IDE (0 – Standard message, 1 – 0xFF: Extended message)
- DLC (Defines the number of data bytes 0 to 8, 9 to 0xFF equal 8 data bytes)
- IRQ (0 – IRQ Enable, 1 – 0xFF: IRQ Disable)
- DATA_BYTES (Pointer to the structure of 8 bytes that represent transmit data)

When called, the CAN_SendMsg() function loops through the transmit message mailboxes that are designated as Basic CAN mailboxes and looks for the first available mailbox:

- When a free Basic CAN mailbox is found, the data passed through the CAN_TX_MSG structure is copied to the appropriate CAN transmit mailbox. When the message is put into the transmit queue, an indication of “SUCCESS” is returned to the application.
- When no free Basic mailbox is found, the function makes up to three more attempts. When all attempts fail, an indication of “FAIL” is returned to the application.

The CAN_TX_MSG structure contains all information required to transmit a message:

```
typedef struct _CAN_TX_MSG
{
    uint32 id;
    uint8 rtr;
    uint8 ide;
    uint8 dlc;
    uint8 irq;
    CAN_DATA_BYTES_MSG *msg;
} CAN_TX_MSG;
```

The CAN_DATA_BYTES structure contains eight bytes of data in a message.

```
typedef struct CAN_DATA_BYTES_MSG
{
    uint8 byte[8u];
} CAN_DATA_BYTES_MSG;
```

Clock Selection

The CAN component is connected to the BUS_CLK clock signal. A minimum value of 8 MHz is required to support all standard CAN baud rates up to 1 Mbps.

Placement

The CAN component is placed in the fixed-function CAN block.

Resources

Description	Digital resources		API Memory (Bytes)		Pins (per External I/O)
	CAN IP Block	Interrupts	Flash	RAM	
With tx_en and external interrupt signals disabled	1*	1	4156	18	2
With tx_en signal enabled, external interrupt signals disabled	1*	1	4156	18	3
With tx_en and external interrupt signals enabled	1*	1	4156	18	4

*The CAN component uses the dedicated CAN hardware block in the silicon.

Application Programming Interface

Application Programming Interface (API) routines allow you to configure the component using software. The following table lists and describes the interface to each function. The subsequent sections discuss each function in more detail.

By default, PSoC Creator assigns the instance name “CAN_1” to the first instance of a component in a given design. You can rename the instance to any unique value that follows the syntactic rules for identifiers. The instance name becomes the prefix of every global function name, variable, and constant symbol. For readability, the instance name used in the following table is “CAN.”

Function	Description
CAN_Start()	Sets the initVar variable, calls the CAN_Init() function, and then calls the CAN_Enable() function.
CAN_Stop()	Disables the CAN component.
CAN_GlobalIntEnable()	Enables global interrupts from the CAN component.
CAN_GlobalIntDisable()	Disables global interrupts from the CAN component.
CAN_SetPreScaler()	Sets the prescaler that generates the time quanta from the BUS_CLK.
CAN_SetArbiter()	Sets the arbitration type for the transmit buffers
CAN_SetTsegSample()	Configures: Time segment 1, Time segment 2, Synchronization Jump Width, and Sampling Mode.
CAN_SetRestartType()	Sets the reset type.
CAN_SetEdgeMode()	Sets the edge mode.
CAN_RXRegisterInit()	Writes only receive CAN registers.
CAN_SetOpMode()	Sets the operation mode.



Function	Description
CAN_GetTXErrorflag()	Returns the flag that indicates if the number of transmit errors exceeds 0x60.
CAN_GetRXErrorflag()	Returns the flag that indicates if the number of receive errors exceeds 0x60.
CAN_GetTXErrorCount()	Returns the number of transmit errors.
CAN_GetRXErrorCount()	Returns the number of receive errors.
CAN_GetErrorState()	Returns the error status of the CAN component.
CAN_SetIrqMask()	Sets to enable or disable particular interrupt sources.
CAN_ArbLostIsr()	Clears the Arbitration Lost interrupt flag.
CAN_OvrLdErrorIsr()	Clears the Overload Error interrupt flag.
CAN_BitErrorIsr()	Clears the Bit Error interrupt flag.
CAN_BitStuffErrorIsr()	Clears the Bit Stuff Error interrupt flag.
CAN_AckErrorIsr()	Clears the Acknowledge Error interrupt flag.
CAN_MsgErrorIsr()	Clears the Form Error interrupt flag.
CAN_CrcErrorIsr()	Clears the CRC Error interrupt flag.
CAN_BusOffIsr()	Clears the Bus Off interrupt flag. Places the CAN component in stop mode.
CAN_MsgLostIsr()	Clears the Message Lost interrupt flag.
CAN_MsgTXIsr()	Clears the Transmit Message interrupt flag.
CAN_MsgRXIsr()	Clears the Receive Message interrupt flag and calls appropriate handlers for Basic and Full interrupt based mailboxes.
CAN_RxBufConfig()	Configures all receive registers for a particular mailbox.
CAN_TxBufConfig()	Configures all transmit registers for a particular mailbox.
CAN_SendMsg()	Sends a message from one of the Basic mailboxes.
CAN_SendMsg0-7()	Looks to see if mailbox 0-7 has untransmitted messages waiting for arbitration.
CAN_TxCancel()	Cancels transmission of a message that has been queued for transmission.
CAN_ReceiveMsg0-15()	Acknowledges receipt of a new message.
CAN_ReceiveMsg()	Clears the Receive particular Message interrupt flag.
CAN_Sleep()	Prepares the CAN component to go to sleep
CAN_Wakeup()	Prepares the CAN component to wake up
CAN_Init()	Initializes or restores the CAN component according to the Configure dialog settings.
CAN_Enable()	Enables the CAN component.
CAN_SaveConfig()	Saves the current configuration.
CAN_RestoreConfig()	Restores the configuration.

For functions that return indication of execution, 0 is “SUCCESS,” 1 is “FAIL,” and 2 is “OUT_OF_RANGE.”

Global Variables

Variable	Description
CAN_initVar	Indicates whether the CAN has been initialized. The variable is initialized to 0 and set to 1 the first time CAN_Start() is called. This allows the component to restart without reinitialization after the first call to the CAN_Start() routine. If reinitialization of the component is required, the CAN_Init() function can be called before the CAN_Start() or CAN_Enable() function.

uint8 CAN_Start(void)

- Description:** This function sets the initVar variable, calls the CAN_Init() function, and then calls the CAN_Enable() function. This function puts the CAN component into run mode and starts the counter if polling mailboxes are available.
- Parameters:** None
- Return Value:** uint8: Indication whether the register is written and verified
- Side Effects:** If the initVar variable is already set, this function calls only the CAN_Enable() function.

uint8 CAN_Stop(void)

- Description:** This function puts the CAN component into stop mode and stops the counter if polling mailboxes are available.
- Parameters:** None
- Return Value:** uint8: Indication whether the register is written and verified
- Side Effects:** None

uint8 CAN_GlobalIntEnable(void)

- Description:** This function enables global interrupts from the CAN component.
- Parameters:** None
- Return Value:** uint8: Indication whether the register is written and verified
- Side Effects:** None



uint8 CAN_GlobalIntDisable(void)

Description: This function disables global interrupts from the CAN component.

Parameters: None

Return Value: uint8: Indication whether the register is written and verified

Side Effects: None

uint8 CAN_SetPreScaler(uint16 bitrate)

Description: This function sets the prescaler that generates the time quanta from the BUS_CLK. Values between 0x0 and 0x7FFF are valid.

Parameters: uint16 bitrate: Prescaler value

Return Value: uint8: Indication whether the register is written and verified

Side Effects: None

uint8 CAN_SetArbiter(uint8 arbiter)

Description: This function sets the arbitration type for transmit buffers. Types of arbiters are Round Robin and Fixed priority. Values 0 and 1 are valid.

Parameters: uint8 arbiter: Type of arbiter

Return Value: uint8: Indication whether the register is written and verified

Side Effects: None

uint8 CAN_SetTsegSample(uint8 cfgTseg1, uint8 cfgTseg2, uint8 sjw, uint8 sm)

Description: This function configures: Time segment 1, Time segment 2, Synchronization Jump Width, and Sampling Mode.

Parameters: uint8 cfgTseg1: Time segment 1, values between 0x2 and 0xF are valid

uint8 cfgTseg2: Time segment 2, values between 0x1 and 0x7 are valid

uint8 sjw: Synchronization Jump Width, values between 0x0 and 0x3 are valid.

uint8 sm: Sampling Mode, one or three sampling points are used

Return Value: uint8: Indication whether the register is written and verified

Side Effects: None



uint8 CAN_SetRestartType(uint8 reset)

Description: This function sets the reset type. Types of reset are Automatic and Manual. Manual reset is the recommended setting. Values 0 and 1 are valid.

Parameters: uint8 reset: Reset type

Return Value: uint8: Indication whether the register is written and verified

Side Effects: None

uint8 CAN_SetEdgeMode(uint8 edge)

Description: This function sets the edge mode. Modes are 'R' to 'D' (Recessive to Dominant) and both edges are used. Values 0 and 1 are valid.

Parameters: uint8 edge: Edge mode

Return Value: uint8: Indication whether the register is written and verified

Side Effects: None

uint8 CAN_RXRegisterInit(uint32 *regAddr, uint32 config)

Description: This function writes only CAN receive registers.

Parameters: uint32 * regAddr: Pointer to the CAN receive register
uint32 configuration: Value that will be written in the register

Return Value: uint8: Indication whether the register is written and verified

Side Effects: None

uint8 CAN_SetOpMode(uint8 opMode)

Description: This function sets the operation mode. Operation modes are Active or Listen Only. Values 0 and 1 are valid.

Parameters: uint8 opMode: Operation mode value

Return Value: uint8: Indication whether the register is written and verified

Side Effects: None



uint8 CAN_GetTXErrorflag(void)

Description: This function returns the flag that indicates if the number of transmit errors exceeds 0x60.

Parameters: None

Return Value: uint8: Indication whether the number of transmit errors exceeds 0x60

Side Effects: None

uint8 CAN_GetRXErrorflag(void)

Description: This function returns the flag that indicates if the number of receive errors exceeds 0x60.

Parameters: None

Return Value: uint8: Indication whether the number of receive errors exceeds 0x60

Side Effects: None

uint8 CAN_GetTXErrorCount(void)

Description: This function returns the number of transmit errors.

Parameters: None

Return Value: uint8: Number of transmit errors

Side Effects: None

uint8 CAN_GetRXErrorCount(void)

Description: This function returns the number of receive errors.

Parameters: None

Return Value: uint8: Number of receive errors

Side Effects: None

uint8 CAN_GetErrorState(void)

Description: This function returns the error status of the CAN component.

Parameters: None

Return Value: uint8: Error status

Side Effects: None



uint8 CAN_SetIrqMask(uint16 mask)

- Description:** This function enables or disables particular interrupt sources. Interrupt Mask directly writes to the CAN Interrupt Enable register.
- Parameters:** uint8 request: Interrupt enable or disable request. One bit per interrupt source
- Return Value:** uint8: Indication whether the register is written and verified
- Side Effects:** None

void CAN_ArbLostIsr(void)

- Description:** This function is the entry point to the Arbitration Lost interrupt. It clears the Arbitration Lost interrupt flag. It is generated only if the Arbitration Lost Interrupt parameter is enabled.
- Parameters:** None
- Return Value:** None
- Side Effects:** None

void CAN_OvrLdErrorIsr(void)

- Description:** This function is the entry point to the Overload Error interrupt. It clears the Overload Error interrupt flag. It is generated only if the Overload Error Interrupt parameter is enabled.
- Parameters:** None
- Return Value:** None
- Side Effects:** None

void CAN_BitErrorIsr(void)

- Description:** This function is the entry point to the Bit Error interrupt. It clears the Bit Error interrupt flag. It is generated only if the Bit Error Interrupt parameter is enabled.
- Parameters:** None
- Return Value:** None
- Side Effects:** None



void CAN_BitStuffErrorIsr(void)

Description: This function is the entry point to the Bit Stuff Error interrupt. It clears the Bit Stuff Error interrupt flag. It is generated only if the Bit Stuff Error Interrupt parameter is enabled.

Parameters: None

Return Value: None

Side Effects: None

void CAN_AckErrorIsr(void)

Description: This function is the entry point to the Acknowledge Error interrupt. It clears the Acknowledge Error interrupt flag. It is generated only if the Acknowledge Error Interrupt parameter is enabled.

Parameters: None

Return Value: None

Side Effects: None

void CAN_MsgErrorIsr(void)

Description: This function is the entry point to the Form Error interrupt. It clears the Form Error interrupt flag. It is generated only if the Form Error Interrupt parameter is enabled.

Parameters: None

Return Value: None

Side Effects: None

void CAN_CrcErrorIsr(void)

Description: This function is the entry point to the CRC Error interrupt. It clears the CRC Error interrupt flag. It is generated only if the CRC Error Interrupt parameter is enabled.

Parameters: None

Return Value: None

Side Effects: None

void CAN_BusOffIsr(void)

Description: This function is the entry point to the Bus Off interrupt. It puts the CAN component in stop mode. It is only generated if the Bus Off Interrupt parameter is enabled. Enabling this interrupt is recommended.

Parameters: None

Return Value: None

Side Effects: Stops CAN component operation

void CAN_MsgLostIsr(void)

Description: This function is the entry point to the Message Lost interrupt. It clears the Message Lost interrupt flag. It is generated only if the Message Lost Interrupt parameter is enabled.

Parameters: None

Return Value: None

Side Effects: None

void CAN_MsgTXIsr(void)

Description: This function is the entry point to the Transmit Message interrupt. It clears the Transmit Message interrupt flag. It is generated only if the Transmit Message Interrupt parameter is enabled.

Parameters: None

Return Value: None

Side Effects: None

void CAN_MsgRXIsr(void)

Description: This function is the entry point to the Receive Message interrupt. It clears the Receive Message interrupt flag and calls the appropriate handlers for Basic and Full interrupt based mailboxes. It is generated only if the Receive Message Interrupt parameter is enabled. Enabling this interrupt is recommended.

Parameters: None

Return Value: None

Side Effects: None



uint8 CAN_RxBufConfig(CAN_RX_CFG *rxConfig)

- Description:** This function configures all receive registers for a particular mailbox. The mailbox number contains the CAN_RX_CFG structure.
- Parameters:** CAN_RX_CFG * rxConfig: Pointer to the structure that contains all required values to configure all receive registers for a particular mailbox
- Return Value:** uint8: Indication if a particular receive register configuration has been accepted or rejected
- Side Effects:** None

uint8 CAN_TxBufConfig(CAN_TX_CFG *txConfig)

- Description:** This function configures all transmit registers for a particular mailbox. The mailbox number contains the CAN_TX_CFG structure.
- Parameters:** CAN_TX_CFG * txConfig: Pointer to the structure that contains all required values to configure all transmit registers for a particular mailbox
- Return Value:** uint8: Indication if a particular transmit register configuration has been accepted or rejected
- Side Effects:** None

uint8 CAN_SendMsg(CANTXMsg *message)

- Description:** This function loops through the transmit message mailboxes designated as Basic CAN mailboxes. It looks for the first free available mailbox and sends from it. If it does not find a free Basic mailbox, it will try again up to three times.
- Parameters:** CAN_TX_MSG * message: Pointer to the structure containing the required data to send a message
- Return Value:** uint8: Indication if a message has been sent
- Side Effects:** None

uint8 CAN_SendMsg0-7(void)

- Description:** These functions are the entry point to Transmit Message 0-7. They look to see if mailbox 0-7 already has untransmitted messages waiting for arbitration. If so, they initiate transmission of the message. These functions are generated only for transmit mailboxes designated as Full.
- Parameters:** None
- Return Value:** uint8: Indication if a message has been sent
- Side Effects:** None



void CAN_TxCancel(uint8 bufferId)

Description: This function cancels transmission of a message that has been queued for transmission. Values between 0 and 15 are valid.

Parameters: uint8 bufferId: Number of Tx mailbox.

Return Value: None

Side Effects: None

void CAN_ReceiveMsg0-15(void)

Description: These functions are the entry point to the Receive Message 0-15 interrupt. They clear the Receive Message 0-15 interrupt flags. They are generated only for receive mailboxes designated as Full interrupt based.

Parameters: None

Return Value: None

Side Effects: None

void CAN_ReceiveMsg(uint8 rxMailbox)

Description: This function is the entry point to the Receive Message interrupt for Basic mailboxes. It clears the Receive particular Message interrupt flag. It is only generated if one of the Receive mailboxes is designated as Basic.

Parameters: uint8 rxMailbox: Mailbox number that triggers the Receive Message interrupt

Return Value: None

Side Effects: None

void CAN_Sleep(void)

Description: This is the preferred routine to prepare the component for sleep. The CAN_Sleep() routine saves the current component state. Then it calls the CAN_Stop() function and calls CAN_SaveConfig() to save the hardware configuration.
Call the CAN_Sleep() function before calling the CyPmSleep() or the CyPmHibernate() function. See the PSoC Creator *System Reference Guide* for more information about power-management functions.

Parameters: None

Return Value: None

Side Effects: None



void CAN_Wakeup(void)

- Description:** This is the preferred routine to restore the component to the state when CAN_Sleep() was called. The CAN_Wakeup() function calls the CAN_RestoreConfig() function to restore the configuration. If the component was enabled before the CAN_Sleep() function was called, the CAN_Wakeup() function also re-enables the component.
- Parameters:** None
- Return Value:** None
- Side Effects:** Calling the CAN_Wakeup() function without first calling the CAN_Sleep() or CAN_SaveConfig() function may produce unexpected behavior.

uint8 CAN_Init(void)

- Description:** This function initializes or restores the component according to the customizer Configure dialog settings. It is not necessary to call CAN_Init() because the CAN_Start() routine calls this function and is the preferred method to begin component operation.
- Parameters:** None
- Return Value:** uint8: Indication whether the configuration has been accepted or rejected
- Side Effects:** All registers will be reset to their initial values. This reinitializes the component with the following exception: it does not clear data from the mailboxes.
Enables power to the CAN core.

uint8 CAN_Enable(void)

- Description:** This function activates the hardware and begins component operation. It is not necessary to call CAN_Enable() because the CAN_Start() routine calls this function, which is the preferred method to begin component operation.
- Parameters:** None
- Return Value:** None
- Side Effects:** None

void CAN_SaveConfig(void)

- Description:** This function saves the component configuration and nonretention registers. It also saves the current component parameter values, as defined in the Configure dialog or as modified by appropriate APIs. This function is called by the CAN_Sleep() function.
- Parameters:** None
- Return Value:** None
- Side Effects:** None



void CAN_RestoreConfig(void)

- Description:** This function restores the component configuration and nonretention registers. It also restores the component parameter values to what they were before calling the CAN_Sleep() function.
- Parameters:** None
- Return Value:** None
- Side Effects:** Calling this function without first calling the CAN_Sleep() or CAN_SaveConfig() function can produce unexpected behavior. The following registers will revert to default values: CAN_INT_SR, CAN_INT_EN, CAN_CMD, and CAN_CFG.

Sample Firmware Source Code

PSoC Creator provides many example projects that include schematics and example code in the Find Example Project dialog. For component-specific examples, open the dialog from the Component Catalog or an instance of the component in a schematic. For general examples, open the dialog from the Start Page or **File** menu. As needed, use the **Filter Options** in the dialog to narrow the list of projects available to select.

Refer to the “Find Example Project” topic in the PSoC Creator Help for more information.

Interrupt Service Routines

There are several CAN component interrupt sources:

- Arbitration Lost Detection – The arbitration was lost while sending a message.
- Overload Error – The CAN controller received an overload frame.
- Bit Error – The CAN controller detected a bit error.
- Bit Stuff Error - The CAN controller detected a bit stuffing error.
- Acknowledge Error – The CAN controller detected a CAN message acknowledge error.
- Form Error – The CAN controller detected a CAN message format error.
- CRC Error – The CAN controller detected a CAN CRC error.
- Bus Off – The CAN controller has reached the bus off state
- Message Lost – A new message arrived but there was nowhere to put it.
- Transmit Message – The queued message was sent.
- Receive Message – A message was received.



All of these interrupt sources have entry points (functions) so you can place code in them. These functions are conditionally compiled depending on the customizer.

The Receive Message interrupt has a special handler that calls appropriate functions for Full and Basic mailboxes.

Interrupt Output Use Cases

The following are example use cases of the hardware interrupt output line in the CAN component:

Hardware Control of Logic on Interrupt Events

The hardware interrupt line can be used to perform simple tasks such as estimating the CAN bus load. By enabling the Message Transmitted and Message Received interrupts in the CAN component customizer, and connecting the interrupt line to a counter, the number of messages that are on the bus during a specific time interval can be evaluated. Also, actions can be taken directly in hardware if the message rate is above a certain value.

Interrupt Output Interaction with DMA

The CAN component does not support DMA operation internally, but you can connect the DMA component to the external interrupt line (if it is enabled). You are responsible for the DMA configuration and operation. Also, you should keep in mind that it is necessary to manage some housekeeping tasks (for example, acknowledging the message and clearing the interrupt flags) in code to handle CAN interrupts properly.

With a hardware DMA trigger you can handle registers and data transfers when a Message Received interrupt occurs, without any firmware executing in the CPU. This is also useful when handling RTR messages. The Message Transmitted interrupt can be used to trigger a DMA transfer to reload the message buffer with new data, without CPU intervention.

Custom External Interrupt Service Routine

Custom external ISRs can be used in addition to or as a replacement to the internal ISR. When the external ISR is used in addition to the internal ISR, the Interrupt priority can be set to determine which ISR should execute first (internal or external), thus forcing actions before or after those coded in the internal ISR. When the external ISR is used as replacement for the internal ISR, you assume all responsibility for proper handling of CAN registers and events.

Interrupt Output Interaction with the Interrupt Subsystem

The CAN component Interrupt Output settings allow you to:

- Enable or disable an external interrupt line (customizer option)
- Disable or bypass the internal ISR (customizer option)



- Fully customize the internal ISR (customizer option)
- Enable or disable specific interrupts handling function calls in the internal ISR, when the relevant event interrupts are enabled (customizer option). Individual interrupts (message transmitted, message received, receive buffer full, bus off state, and so on) can be enabled or disabled in the CAN component customizer. Once enabled, the relevant function call is executed in the internal CAN_ISR. This allows you to disable (remove) such function calls.

The external interrupt line is visible only if it is enabled in the customizer.

If an external Interrupt component is connected, the external Interrupt component is not started as part of the CAN_Start() API, and must be started outside that routine.

If an external Interrupt component is connected and the internal ISR is not disabled or bypassed, two Interrupt components are connected to the same line. In this case, you will have two separate Interrupt components that will handle the same interrupt events. This is a specific, and in most cases undesirable, situation.

If the internal ISR is disabled or bypassed (using a customizer option), the internal Interrupt component will be removed during the build process.

If you choose to disable an individual interrupt function call in the internal interrupt routine (for an enabled interrupt event, by using a customizer option), the CAN block interrupt triggers (when the relevant event occurs), but no internal function call is executed in the internal CAN_ISR routine. An example use case is when you want to handle a specific event (for example, message received) through a different path, other than the standard user function call (for example, through DMA).

If you choose to fully customize the internal ISR (using customizer options) the CAN_ISR function will not contain any function call other than the optional PSoC 3 ES1/ES2 ISR patch.

Functional Description

For a complete description, see the Controller Area Network (CAN) chapter in the [PSoC® 3 and PSoC® 5 Technical Reference Manual](#).

Block Diagram and Configuration

For complete block diagram and configuration information, see the Controller Area Network (CAN) chapter in the [PSoC® 3 and PSoC® 5 Technical Reference Manual](#).

References

1. *ISO-11898: Road vehicles -- Controller area network (CAN):*
 - ❑ Part 1: Data link layer and physical signaling
 - ❑ Part 2: High-speed medium access unit



- ☐ Part 3: Low-speed, fault-tolerant, medium-dependent interface
- ☐ Part 4: Time-triggered communication
- ☐ Part 5: High-speed medium access unit with low-power mode

2. *CAN Specification Version 2 BOSCH*

3. *Inicore CANmodule-III-AHB Datasheet*

DC and AC Electrical Characteristics

The following values indicate expected performance and are based on initial characterization data.

CAN DC Specifications

Parameter	Description	Conditions	Min	Typ	Max	Units
	Block current consumption	500 kbps	--	--	285	μA
		1 Mbps	--	--	330	μA

CAN AC Specifications

Parameter	Description	Conditions	Min	Typ	Max	Units
	Bit rate	Minimum 8 MHz clock	--	--	1	Mbit

Component Changes

This section lists the major changes in the component from the previous version.

Current Version	Description of Changes	Reason for Changes / Impact
2.1	Added all CAN APIs with the CYREENTRANT keyword when they are included in the .cyre file.	Not all APIs are truly reentrant. Comments in the component API source files indicate which functions are candidates. This change is required to eliminate compiler warnings for functions that are not reentrant used in a safe way: protected from concurrent calls by flags or Critical Sections.
2.0.a	Replaced the timing diagram and added descriptive text to the datasheet	
	Minor datasheet edits and updates	
2.0	Added an interrupt output to the component symbol	Updated Marketing Requirements Document MRD for the PSoC 3 CAN Component



Current Version	Description of Changes	Reason for Changes / Impact
	Added the ConnectExtInterruptLine, IntISRDisable, FullCustomIntISR, AdvancedInterruptTab parameters and ISR helper parameters in the component symbol	Updated Marketing Requirements Document MRD for the PSoC 3 CAN Component
	Added the stop statement at the beginning of the CAN_Init() function.	To ensure that CAN is stopped at initialization
	Updated the interrupt handlers functions. In all cases the interrupt flag is cleared before the user code.	To clear interrupt flags in the same manner
	Removed obsolete defines	
1.50.a	Added characterization data to the datasheet	
	Datasheet text edits	
1.50	Added the Sleep/Wakeup APIs.	These APIs provide support for low-power modes.
	Added the CAN_Init() and CAN_Enable() APIs.	To comply with the corporate standard and provide an API to initialize/restore the component without starting it.

© Cypress Semiconductor Corporation, 2012. The information contained herein is subject to change without notice. Cypress Semiconductor Corporation assumes no responsibility for the use of any circuitry other than circuitry embodied in a Cypress product. Nor does it convey or imply any license under patent or other rights. Cypress products are not warranted nor intended to be used for medical, life support, life saving, critical control or safety applications, unless pursuant to an express written agreement with Cypress. Furthermore, Cypress does not authorize its products for use as critical components in life-support systems where a malfunction or failure may reasonably be expected to result in significant injury to the user. The inclusion of Cypress products in life-support systems application implies that the manufacturer assumes all risk of such use and in doing so indemnifies Cypress against all charges.

PSoC® is a registered trademark, and PSoC Creator™ and Programmable System-on-Chip™ are trademarks of Cypress Semiconductor Corp. All other trademarks or registered trademarks referenced herein are property of the respective corporations.

Any Source Code (software and/or firmware) is owned by Cypress Semiconductor Corporation (Cypress) and is protected by and subject to worldwide patent protection (United States and foreign), United States copyright laws and international treaty provisions. Cypress hereby grants to licensee a personal, non-exclusive, non-transferable license to copy, use, modify, create derivative works of, and compile the Cypress Source Code and derivative works for the sole purpose of creating custom software and or firmware in support of licensee product to be used only in conjunction with a Cypress integrated circuit as specified in the applicable agreement. Any reproduction, modification, translation, compilation, or representation of this Source Code except as specified above is prohibited without the express written permission of Cypress.

Disclaimer: CYPRESS MAKES NO WARRANTY OF ANY KIND, EXPRESS OR IMPLIED, WITH REGARD TO THIS MATERIAL, INCLUDING, BUT NOT LIMITED TO, THE IMPLIED WARRANTIES OF MERCHANTABILITY AND FITNESS FOR A PARTICULAR PURPOSE. Cypress reserves the right to make changes without further notice to the materials described herein. Cypress does not assume any liability arising out of the application or use of any product or circuit described herein. Cypress does not authorize its products for use as critical components in life-support systems where a malfunction or failure may reasonably be expected to result in significant injury to the user. The inclusion of Cypress' product in a life-support systems application implies that the manufacturer assumes all risk of such use and in doing so indemnifies Cypress against all charges.

Use may be limited by and subject to the applicable Cypress software license agreement.

