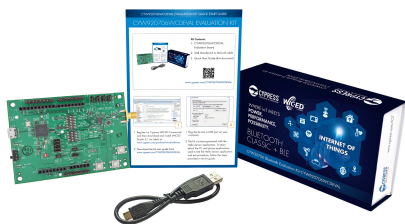


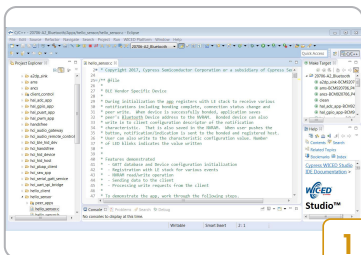
## CYW920706WCDEVAL EVALUATION KIT

**Kit Contents:**

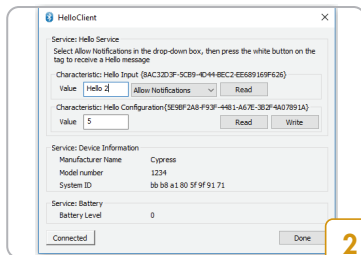
- 1 CYW920706WCDEVAL Evaluation board
- 2 USB Standard-A to Micro-B cable
- 3 Quick Start Guide (this document)



[www.cypress.com/CYW920706WCDEVAL](http://www.cypress.com/CYW920706WCDEVAL)



1



2

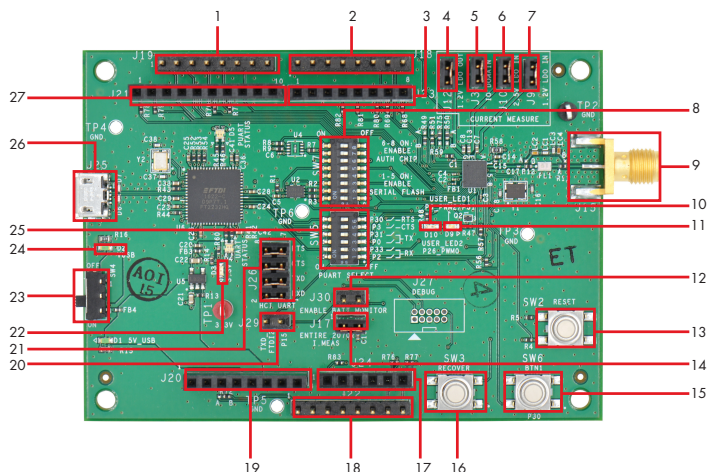
- 1 Register on Cypress WICED Community and then download and install WICED Studio 5.1 (or later) at [www.cypress.com/products/wiced-software](http://www.cypress.com/products/wiced-software)

- 2 Download the kit user guide from [www.cypress.com/CYW920706WCDEVAL](http://www.cypress.com/CYW920706WCDEVAL)

- 1 Plug the kit into a USB port on your computer.
- 2 The kit is pre-programmed with the Hello Sensor application. To learn about the PC and phone applications used to test the Hello Sensor application and test procedure, follow the steps provided in the kit guide.

## CYW920706WCDEVAL EVALUATION KIT

## CYW920706WCDEVAL Evaluation Board Details



- |                                      |   |
|--------------------------------------|---|
| 1. GPIO Header J19                   | 16. Recovery Switch SW3                                     |
| 2. SPI and UART Header J18           | 17. Arduino Header J24                                      |
| 3. Arduino Header J23                | 18. I/O Header J22  |
| 4. 1.2 V LDO Output Jumper J12       | 19. Arduino Header J20                                      |
| 5. Power supply to BT_VDDO Jumper J3 | 20. GPIO15 to FTDI2RX for Debug Jumper J29                  |
| 6. 2.5 V LDO Input Jumper J10        | 21. HCI UART/FTDI header jumper J26                         |
| 7. 1.2 V LDO Input Jumper J9         | 22. 3.3V Power Status                                       |
| 8. Configuration Switch SW7          | 23. Power Switch SW4  |
| 9. External Antenna Connector J15    | 24. Status indicator for USB Supply                         |
| 10. User LED D10                     | 25. See Table 1   |
| 11. User LED D9                      | 26. Micro-USB Header (Power, Programming and Debugging) J25 |
| 12. Enable BATT Monitor J30          | 27. Arduino Header J21                                      |
| 13. Reset Switch SW2                 |   |
| 14. CYW920706 Supply Jumper J17      |   |
| 15. User Switch SW6                  |   |

For the latest information about this kit, visit [www.cypress.com/CYW920706WCDEVAL](http://www.cypress.com/CYW920706WCDEVAL)