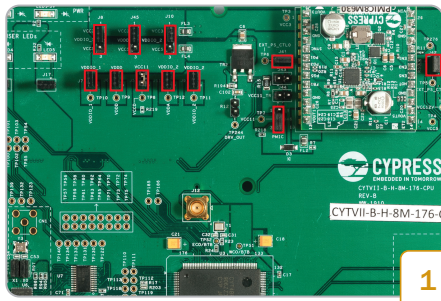
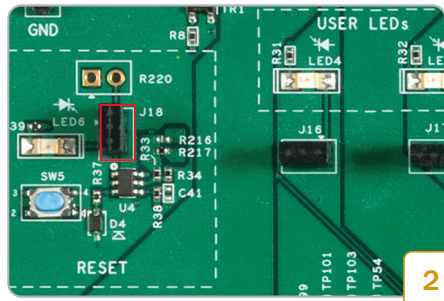


TRAVEO II CPU BOARD



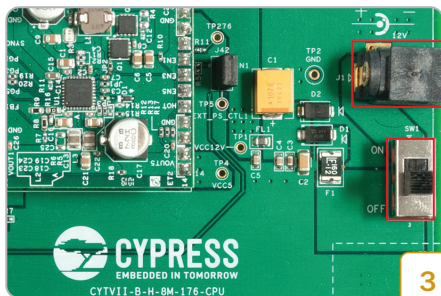
1

- Ensure that jumpers J7, J6, J5, J11, J9, J41, J42 are inserted. Ensure that Jumpers J8, J45, J10 are in 1-2 position and J46 is in 2-3 position



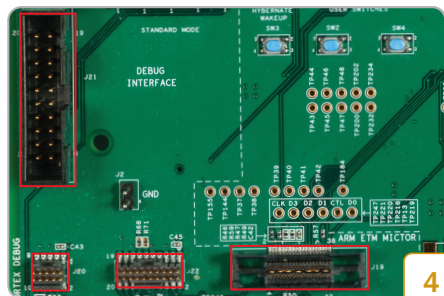
2

- Ensure that the MCU Reset Controller Jumper (J18) is inserted



3

- Connect the 12V Adapter to Power Jack (J1). Toggle the switch SW1 to ON position to power up the board



4

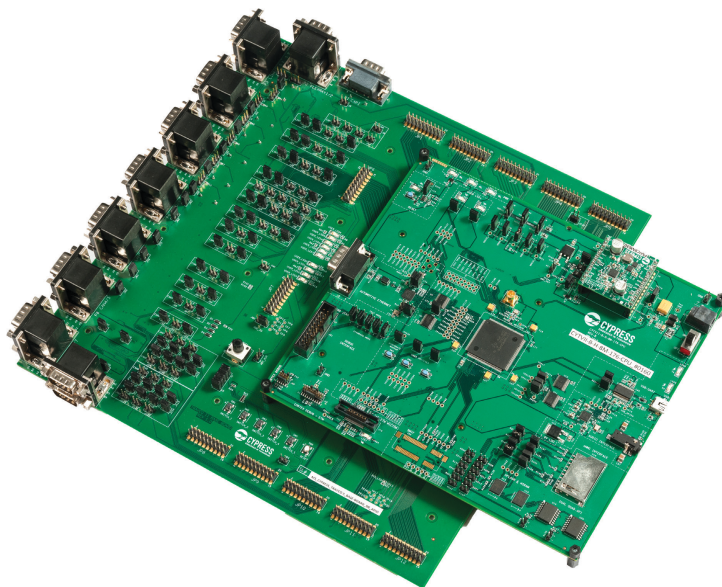
- Connect an appropriate programming tool (IAR/GHS), to one of the debugging interfaces -(J21, J20, J22, J19)

Use an appropriate IDE on a PC, to load a firmware SREC file into the device flash successfully.
The LED Blink Firmware is available in the Release-Package

TRAVEO II CPU BOARD

Instructions:

- The Traveo II CPU Board can be used standalone to evaluate limited features of the Traveo II MCU
- The board can be used with Body Controller Base Board, to evaluate all the features of the MCU



- To know more about the Base Board and compatibility, please use the Cypress Customer Support Portal. ([cypress.com/support](https://www.cypress.com/support))

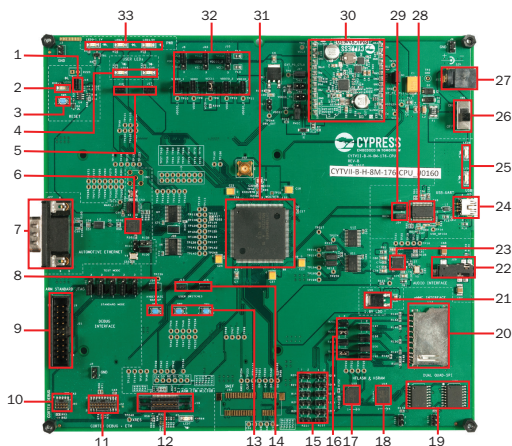
For the following documentation:

- User Guide
- Schematic
- Sample Driver Library (SDL)
- Software examples

Please use the Cypress Customer Support Portal.

TRAVEO II CPU BOARD

Traveo II CPU Board Details



- | | |
|---|-------------------------------------|
| 1. MCU Reset Controller Jumper - J18 | 17. 512Mb Hyper Flash Memory |
| 2. MCU Reset LED – LED6 | 18. 64Mb HyperRAM Self-Refresh DRAM |
| 3. MCU Reset Button - SW5 | 19. Quad SPI 256Mb Flash Memory |
| 4. User LED's - LED4 & LED5 | 20. SD Card Connector |
| 5. Jumpers for User LEDs - J16 & J17 | 21. 1.8V LDO |
| 6. Automotive Ethernet Controller | 22. Audio Jack – J29 |
| 7. D-SUB 9 Automotive Ethernet Connector | 23. Audio Codec |
| 8. Hibernate Wake Up Switch – SW3 | 24. USB Type-B Mini Connector |
| 9. 20 Pin IDC Arm Standard JTAG Connector | 25. UART Rx and Tx LEDs |
| 10. MIPI-10-Cortex Debug Connector | 26. SW1 – Power Switch |
| 11. MIPI-20-Cortex Debug + ETM Connector | 27. Power Jack (12V) – J1 |
| 12. Mictor-38- Arm ETM Mictor Connector | 28. Cypress USB Serial Controller |
| 13. User Switches – SW2 & SW4 | 29. UART Rx and Tx Jumpers |
| 14. Jumpers for User Switches – J13 & J15 | 30. Cypress PMIC Board |
| 15. Jumpers for SMIF | 31. Cypress TVII-B-H-8M Device |
| 16. Jumpers for SDHC | 32. MCU Power Jumpers |
| | 33. MCU Power LEDs |