

Please note that Cypress is an Infineon Technologies Company.

The document following this cover page is marked as “Cypress” document as this is the company that originally developed the product. Please note that Infineon will continue to offer the product to new and existing customers as part of the Infineon product portfolio.

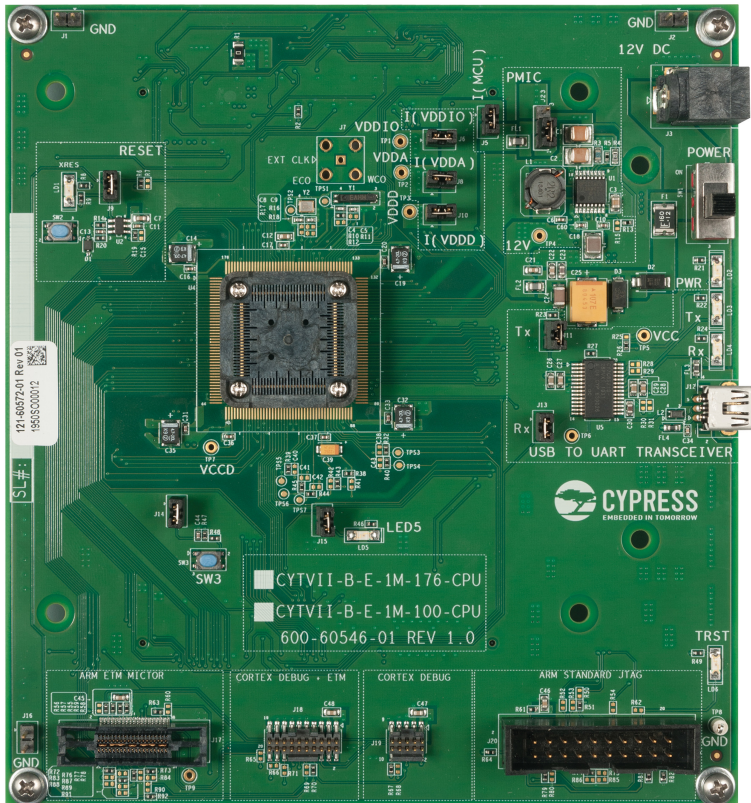
Continuity of document content

The fact that Infineon offers the following product as part of the Infineon product portfolio does not lead to any changes to this document. Future revisions will occur when appropriate, and any changes will be set out on the document history page.

Continuity of ordering part numbers

Infineon continues to support existing part numbers. Please continue to use the ordering part numbers listed in the datasheet for ordering.

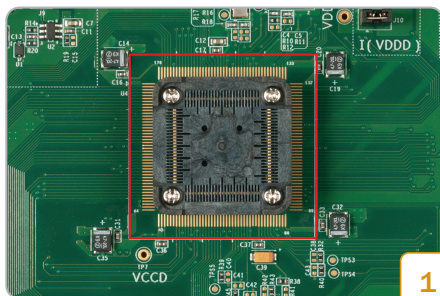
Traveo™ II CPU board



Kit contents:

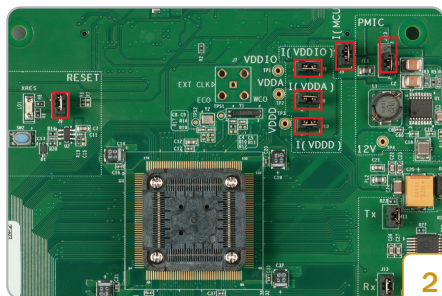
1. Traveo™ II CPU board (CYTVII-B-E-100-SO)
2. Mini-B USB cable
3. 12-V universal power adapter
4. Quick start guide (this document)
5. Screws and spacers

Traveo™ II CPU board



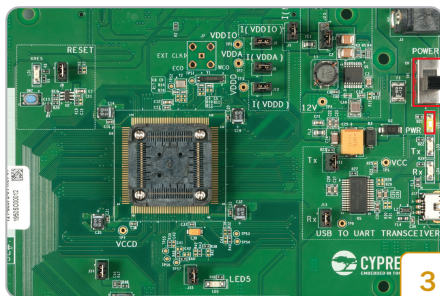
1

- Insert the Traveo™ II device into the IC socket (U3). Align Pin 1 with the arrow mark near C16 and close the socket cover.



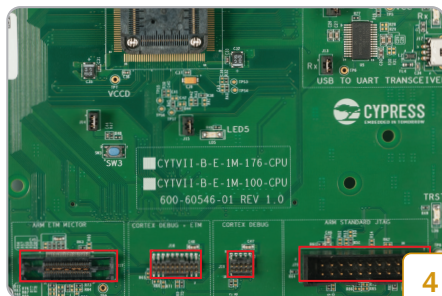
2

- Ensure that jumpers J23 (pins 1 & 2), J5, J6, J7, J9, J10 are shorted. Connect the 12-V adapter to the power jack (J3).



3

- Toggle switch SW1 to the upper position to turn ON the board. The PWR LED should glow.



4

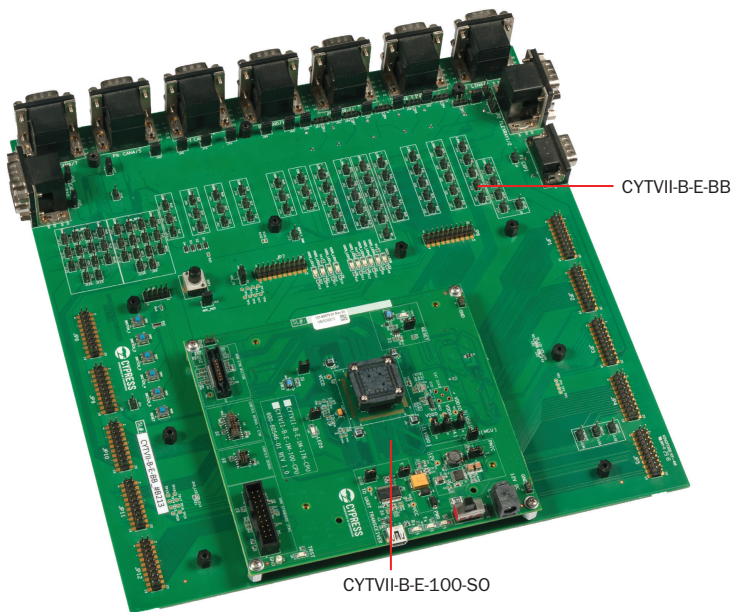
- Connect an appropriate programming tool (IAR/GHS) to one of the debug interface (J17, J18, J19, J20).
- Use an appropriate IDE on a PC to load a firmware SREC file into the device flash. The LED blink firmware is available in the release package.

Traveo™ II CPU board

Instructions:

Use the board in conjunction with the body controller baseboard (CYTVII-B-E-BB) to evaluate all features of the Traveo™ II MCU. In standalone mode, only limited features of the MCU are available.

See the CPU board user guide for details.

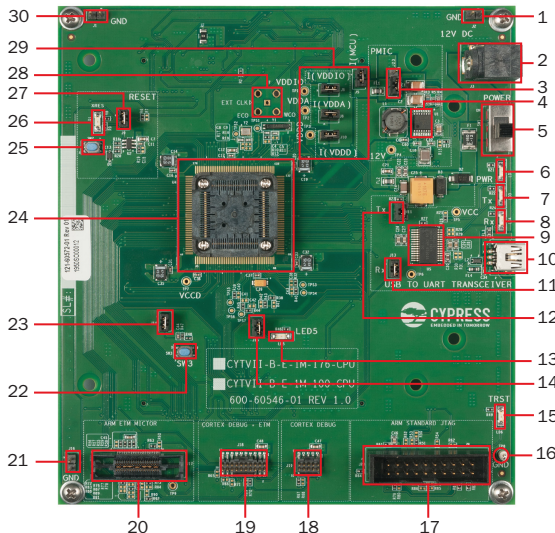


Go to the customer support portal ([cypress.com/support](https://www.cypress.com/support)) to know more about the baseboard and compatibility, and for the following resources:

- User guide
- Schematic
- Sample driver library (SDL)
- Software examples

Traveo™ II CPU board

Traveo™ II CPU board details



- | | |
|---|--|
| 1. Jumper for GND probe – J2 | 16. GND test probe point – TP8 |
| 2. Power connector 12V – J3 | 17. IDC Arm® standard JTAG 20-pin connector – J20 |
| 3. Jumper to switch PMIC/LDO mode – J23 | 18. Arm® Cortex® debug MIPI-10 connector – J19 |
| 4. PMIC controller (S6BP201A) – U1 | 19. Arm® Cortex® debug ETM MIPI-20 connector – J18 |
| 5. CPU board power switch – SW1 | 20. Arm® ETM Mictor-38 connector – J17 |
| 6. CPU board power LEDs – LD2 | 21. Jumper for GND probe – J16 |
| 7. USB-UART Tx LED – LD3 | 22. User switch – SW3 |
| 8. USB-UART Rx LED – LD4 | 23. Jumper for user switch – J14 |
| 9. USB serial controller (CY7C65213) – U5 | 24. Traveo™ II TVII-B-E-100 device (CYT2Bx5) – U3 |
| 10. Mini-B USB connector – J12 | 25. MCU reset switch – SW2 |
| 11. Jumper for USB-UART Rx – J13 | 26. MCU reset LED – LD1 |
| 12. Jumper for USB-UART Tx – J11 | 27. MCU reset controller jumper – J9 |
| 13. User LED – LD5 | 28. External clock input SMA connector – J7 |
| 14. Jumper for user LED – J15 | 29. MCU power jumpers – J6, J8, J10 |
| 15. MCU reset LED – LD6 | 30. Jumper for GND probe – J1 |