

EZ-BT™ MODULE ARDUINO EVALUATION BOARD

CYBT-343052-EVAL



The EZ-BT™ Module Arduino Evaluation Board (CYBT-343052-EVAL) enables you to evaluate and develop applications on the EZ-BT WICED Module, CYBT-343052-02. CYBT-343052-EVAL can be used as a standalone evaluation kit or can be combined with Arduino compatible shields.

The CYBT-343052-02 WICED Module is a fully integrated, fully certified, 13.31 mm x 22.40 mm x 1.95 mm, programmable, Bluetooth® Smart Ready module designed to reduce your time-to-market.

For more information, visit:

www.cypress.com/bluetooth_modules - EZ-BT Module home page

www.cypress.com/EZ-Serial - EZ-Serial Firmware Platform page

www.cypress.com/Modus - ModusToolbox page

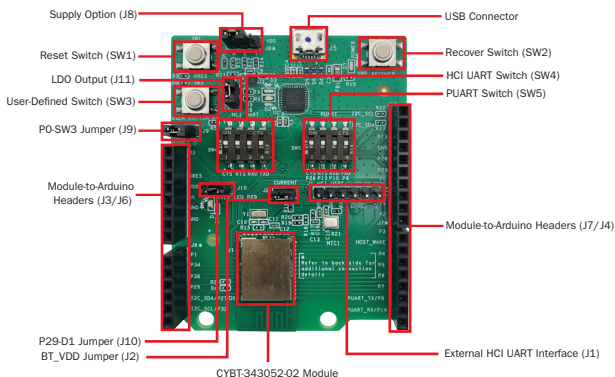


Figure 1: CYBT-343052-EVAL Top View

To use the CYBT-343052-EVAL:

- 1) Configure the evaluation board headers/switches to the desired settings.
- 2) Connect the evaluation board to a PC via a USB cable.
- 3) Open the ModusToolbox, develop your application, program and test.

Note: Recover the CYBT-343052-EVAL before programming. The Arduino-compatible headers (J3/J4/J6/J7) are optional connections, which provide additional I/O connections to the module and allow for other Arduino shields to be used during development.

EZ-BT™ MODULE ARDUINO EVALUATION BOARD

CYBT-343052-EVAL

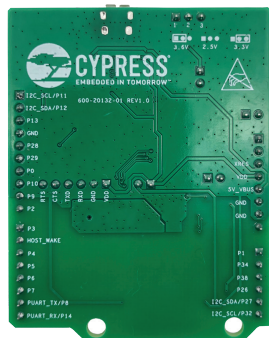


Figure 2: CYBT-343052-EVAL Bottom View

- SW1: Reset Switch routed to the XRES connection on the module.
- SW2: Recover Switch routed to the SPI_MOSI connection on the module.
- SW3: User-defined switch routed to the P0 connection on the module via J9.
- SW4: Switch connecting HCI UART connections on the module to the host via USB.
- SW5: Switch connecting PUART connections on the module to the host via USB.
- J1: Connection for external interface for direct HCI UART communication.
- J2: To measure module power supply current.
- J3/J4/J6/J7: Arduino-compatible headers used with an Arduino-compatible shield.
- J8: Configures the VDD voltage input to the module as shown in the below table:

J8 Jumper Configuration	VDD Voltage Level
Short 1 & 2	3.6V
Short 2 & 3	3.3V
Open	2.5V

- J9: Connects the P0 pad on the module to SW3.
- J10: Connects the P29 pad on the module to LED D1.
- J11: Module Power Supply Selection from LDO or external connector.

The EZ-BT CYBT-343052-02 Module supports Bluetooth SIG Mesh, is qualified for the Bluetooth 5.0 specification and is certified for the 2.4-GHz unlicensed frequency range in USA (FCC), Canada (ISED), Europe (CE) and Japan (MIC).

Visit www.cypress.com/support for technical support.